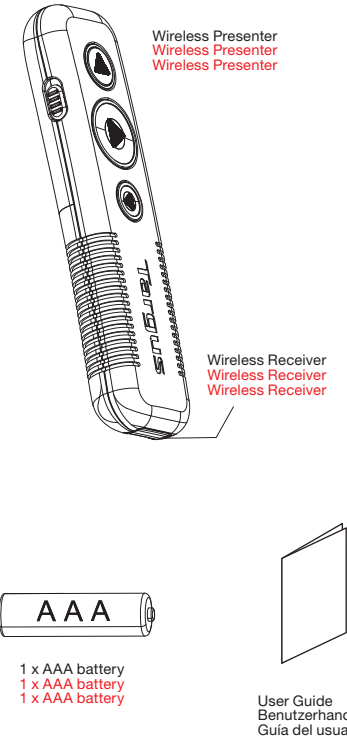


255.0 mm

255.0 mm

X

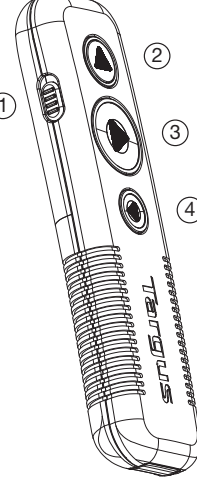
Targus User Guides  
P30 WIRELESS PRESENTER



Model: AMP30 (Product Name: Wireless Presenter)  
AMP30R (Product Name: Wireless Receiver)  
SKU: AMP30TT, AMP301TT  
AMP30 FCC ID: OXMO00087 AMP30R IC: 3760B-00089  
AMP30R FCC ID: OXMO00088 AMP30R IC: 3760B-00089

3. Buttons and Functions

Gerät sperren | Bloquear el dispositivo



- 1 Power button | Power button | Power button
2 Laser pointer | Laser pointer | Laser pointer
3 Page Forward/Next slide | Page Forward/Next slide | Page Forward/Next slide
4 Backward/Previous slide | Backward/Previous slide | Backward/Previous slide

Table with 2 columns: Button function and Key sequence. Rows include Slide show, Black screen, and Start/Stop sequences for various functions.

Product Specification

Gerät sperren | Bloquear el dispositivo

Table with 2 columns: Specification and Value. Includes Operation Frequency (2418MHz-2418MHz), Battery Type (AAA battery), Effective RF Communication Range (15 meter max), Maximum EIRP Power (0.98dBm (+/-2 dBm)), and Rating (1.5V +/- 50mA).

Wireless Receiver (AMP30R) | Wireless Receiver (AMP30R) | Wireless Receiver (AMP30R)

Table with 2 columns: Specification and Value. Includes Operation Frequency (2418MHz-2418MHz), Maximum EIRP Power (6.34dBm (+/-2 dBm)), Rating (5V +/- 100mA), and Interface (USB1.1/2.0).

System Requirements

Gerät sperren | Bloquear el dispositivo

- Hardware
• USB interface
Operating System
• Microsoft Windows® 10
• Microsoft Windows® 8.1
• Microsoft Windows® 8
• Microsoft Windows® 7
• Mac OS® X v10.6 -10.13.6

- Hardware
• USB interface
Operating System
• Microsoft Windows® 10
• Microsoft Windows® 8.1
• Microsoft Windows® 8
• Microsoft Windows® 7
• Mac OS® X v10.6 -10.13.6

- Hardware
• USB interface
Operating System
• Microsoft Windows® 10
• Microsoft Windows® 8.1
• Microsoft Windows® 8
• Microsoft Windows® 7
• Mac OS® X v10.6 -10.13.6

Safety Measures

Gerät sperren | Bloquear el dispositivo

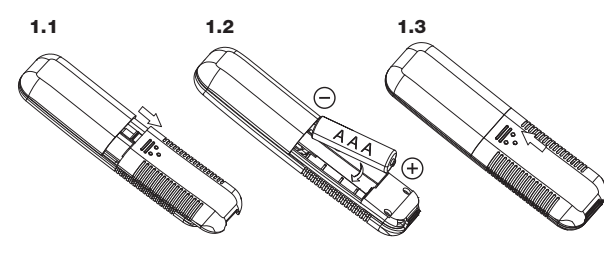
- Caution
• To avoid possible eye damage, never point the Presenter's laser at people, especially their faces, or look directly into the Presenter's laser beam.
• Never Stare directly at the laser beam
• Avoid pointing the Presenter's laser beam at a mirror or other highly-reflective surface.
• Keep the Presenter out of reach of children.
• Never view the Presenter's laser beam using telescopic devices, such as a microscope or binoculars.
• Any attempt to disassemble, adjust or repair the Presenter may result in exposure to laser light or other safety hazards.
• Do not drop the laser pointer on hard surface, it damages the pointer components and causes a malfunction.
• This high-end optic product must be handled with care.

- Caution
• To avoid possible eye damage, never point the Presenter's laser at people, especially their faces, or look directly into the Presenter's laser beam.
• Never Stare directly at the laser beam
• Avoid pointing the Presenter's laser beam at a mirror or other highly-reflective surface.
• Keep the Presenter out of reach of children.
• Never view the Presenter's laser beam using telescopic devices, such as a microscope or binoculars.
• Any attempt to disassemble, adjust or repair the Presenter may result in exposure to laser light or other safety hazards.
• Do not drop the laser pointer on hard surface, it damages the pointer components and causes a malfunction.
• This high-end optic product must be handled with care.

- Caution
• To avoid possible eye damage, never point the Presenter's laser at people, especially their faces, or look directly into the Presenter's laser beam.
• Never Stare directly at the laser beam
• Avoid pointing the Presenter's laser beam at a mirror or other highly-reflective surface.
• Keep the Presenter out of reach of children.
• Never view the Presenter's laser beam using telescopic devices, such as a microscope or binoculars.
• Any attempt to disassemble, adjust or repair the Presenter may result in exposure to laser light or other safety hazards.
• Do not drop the laser pointer on hard surface, it damages the pointer components and causes a malfunction.
• This high-end optic product must be handled with care.

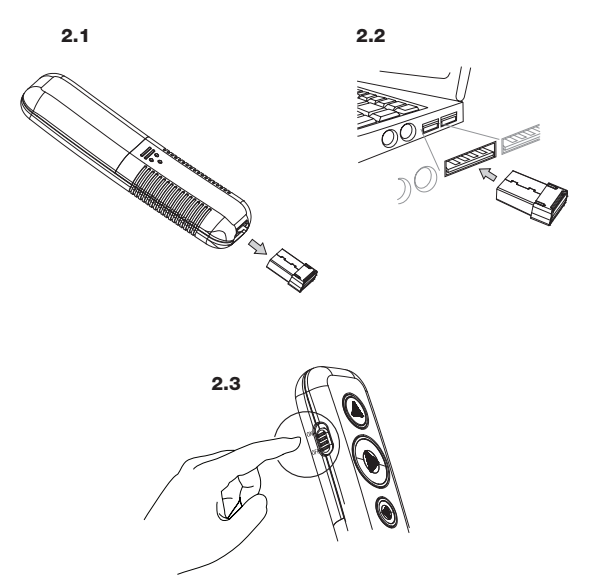
1. Installing the Battery

Gerät sperren | Bloquear el dispositivo



2. Connecting the Receiver

Gerät sperren | Bloquear el dispositivo



Troubleshooting

Gerät sperren | Bloquear el dispositivo

What do I do if the response time of the presenter is slow or it intermittently stops working?

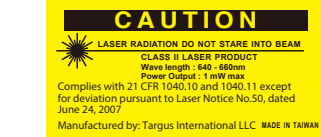
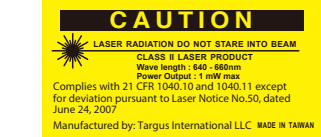
- Make sure that the presenter is within 50 feet (15 m) of its receiver.
• Increase the distance between the Presenter's Receiver and the base units of other wireless devices.
• Turn off any wireless devices and their base units that are near the Presenter's Receiver.
• Replace the battery.
• If it's abnormal under Mac OS, unplug Wireless Receiver, hold Page Forward and Next slide Button 3 seconds. At the same time, Blue Light will fast flash. Release the button at the same time, Presenter will enter Mac OS mode. Re-hold the button 3 seconds, Blue Light will slow flash, Presenter will enter windows mode.

What do I do if the response time of the presenter is slow or it intermittently stops working?

- Make sure that the presenter is within 50 feet (15 m) of its receiver.
• Increase the distance between the Presenter's Receiver and the base units of other wireless devices.
• Turn off any wireless devices and their base units that are near the Presenter's Receiver.
• Replace the battery.
• If it's abnormal under Mac OS, unplug Wireless Receiver, hold Page Forward and Next slide Button 3 seconds. At the same time, Blue Light will fast flash. Release the button at the same time, Presenter will enter Mac OS mode. Re-hold the button 3 seconds, Blue Light will slow flash, Presenter will enter windows mode.

What do I do if the response time of the presenter is slow or it intermittently stops working?

- Make sure that the presenter is within 50 feet (15 m) of its receiver.
• Increase the distance between the Presenter's Receiver and the base units of other wireless devices.
• Turn off any wireless devices and their base units that are near the Presenter's Receiver.
• Replace the battery.
• If it's abnormal under Mac OS, unplug Wireless Receiver, hold Page Forward and Next slide Button 3 seconds. At the same time, Blue Light will fast flash. Release the button at the same time, Presenter will enter Mac OS mode. Re-hold the button 3 seconds, Blue Light will slow flash, Presenter will enter windows mode.



AVOID EXPOSURE-HAZARDOUS ELECTROMAGNETIC RADIATION EMITTED FROM THIS APERTURE.

LASER RADIATION. DO NOT STARE INTO THE BEAM OR VIEW DIRECTLY WITH OPTICAL INSTRUMENTS. CLASS 2 LASER PRODUCT.

NEVER POINT A LASER BEAM INTO A PERSON'S EYES OR VIEW A LASER BEAM DIRECTLY, AS PROLONGED EXPOSURE CAN BE HAZARDOUS TO THE EYES. MOMENTARY EXPOSURE FROM A LASER POINTER, SUCH AS AN INADVERTENT SWEEP OF THE LIGHT ACROSS A PERSON'S EYES, MAY CAUSE TEMPORARY FLASH BLINDNESS SIMILAR TO THE EFFECT OF A CAMERA FLASH BULB. ALTHOUGH THIS CONDITION IS TEMPORARY, IT CAN BECOME MORE DANGEROUS IF THE EXPOSED PERSON IS ENGAGED IN A VISION-CRITICAL ACTIVITY SUCH AS DRIVING.

CAUTION: ANY CHANGES OR MODIFICATIONS NOT EXPRESSLY APPROVED BY THE PARTY RESPONSIBLE FOR COMPLIANCE COULD VOID THE USER'S AUTHORITY TO OPERATE THE EQUIPMENT.

THIS DEVICE AND ITS ANTENNA(S) MUST NOT BE CO-LOCATED OR OPERATING IN CONJUNCTION WITH ANY OTHER ANTENNA OR TRANSMITTER. YOUR DEVICE CONTAINS A LOW POWER TRANSMITTER. WHEN DEVICE IS TRANSMITTED IT SENDS OUT RADIO FREQUENCY (RF) SIGNAL. NOTE: THE MANUFACTURER IS NOT RESPONSIBLE FOR ANY RADIO OR TV INTERFERENCE CAUSED BY UNAUTHORIZED MODIFICATIONS TO THIS EQUIPMENT. SUCH MODIFICATIONS COULD VOID THE USER'S AUTHORITY TO OPERATE THE EQUIPMENT.



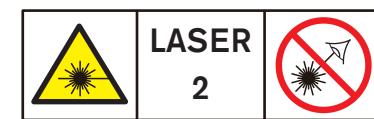
AVOID EXPOSURE-HAZARDOUS ELECTROMAGNETIC RADIATION EMITTED FROM THIS APERTURE.

LASER RADIATION. DO NOT STARE INTO THE BEAM OR VIEW DIRECTLY WITH OPTICAL INSTRUMENTS. CLASS 2 LASER PRODUCT.

NEVER POINT A LASER BEAM INTO A PERSON'S EYES OR VIEW A LASER BEAM DIRECTLY, AS PROLONGED EXPOSURE CAN BE HAZARDOUS TO THE EYES. MOMENTARY EXPOSURE FROM A LASER POINTER, SUCH AS AN INADVERTENT SWEEP OF THE LIGHT ACROSS A PERSON'S EYES, MAY CAUSE TEMPORARY FLASH BLINDNESS SIMILAR TO THE EFFECT OF A CAMERA FLASH BULB. ALTHOUGH THIS CONDITION IS TEMPORARY, IT CAN BECOME MORE DANGEROUS IF THE EXPOSED PERSON IS ENGAGED IN A VISION-CRITICAL ACTIVITY SUCH AS DRIVING.

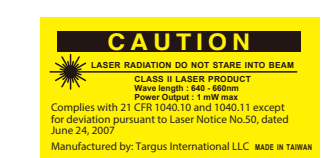
CAUTION: ANY CHANGES OR MODIFICATIONS NOT EXPRESSLY APPROVED BY THE PARTY RESPONSIBLE FOR COMPLIANCE COULD VOID THE USER'S AUTHORITY TO OPERATE THE EQUIPMENT.

THIS DEVICE AND ITS ANTENNA(S) MUST NOT BE CO-LOCATED OR OPERATING IN CONJUNCTION WITH ANY OTHER ANTENNA OR TRANSMITTER. YOUR DEVICE CONTAINS A LOW POWER TRANSMITTER. WHEN DEVICE IS TRANSMITTED IT SENDS OUT RADIO FREQUENCY (RF) SIGNAL. NOTE: THE MANUFACTURER IS NOT RESPONSIBLE FOR ANY RADIO OR TV INTERFERENCE CAUSED BY UNAUTHORIZED MODIFICATIONS TO THIS EQUIPMENT. SUCH MODIFICATIONS COULD VOID THE USER'S AUTHORITY TO OPERATE THE EQUIPMENT.



480.0 mm

480.0 mm

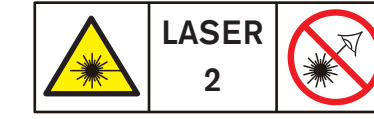


AVOID EXPOSURE-HAZARDOUS ELECTROMAGNETIC RADIATION EMITTED FROM THIS APERTURE. LASER RADIATION. DO NOT STARE INTO THE BEAM OR VIEW DIRECTLY WITH OPTICAL INSTRUMENTS. CLASS 2 LASER PRODUCT.

NEVER POINT A LASER BEAM INTO A PERSON'S EYES OR VIEW A LASER BEAM DIRECTLY, AS PROLONGED EXPOSURE CAN BE HAZARDOUS TO THE EYES. MOMENTARY EXPOSURE FROM A LASER POINTER, SUCH AS AN INADVERTENT SWEEP OF THE LIGHT ACROSS A PERSON'S EYES, MAY CAUSE TEMPORARY FLASH BLINDNESS SIMILAR TO THE EFFECT OF A CAMERA FLASH BULB. ALTHOUGH THIS CONDITION IS TEMPORARY, IT CAN BECOME MORE DANGEROUS IF THE EXPOSED PERSON IS ENGAGED IN A VISION-CRITICAL ACTIVITY SUCH AS DRIVING.

CAUTION: ANY CHANGES OR MODIFICATIONS NOT EXPRESSLY APPROVED BY THE PARTY RESPONSIBLE FOR COMPLIANCE COULD VOID THE USER'S AUTHORITY TO OPERATE THE EQUIPMENT.

THIS DEVICE AND ITS ANTENNA(S) MUST NOT BE CO-LOCATED OR OPERATING IN CONJUNCTION WITH ANY OTHER ANTENNA OR TRANSMITTER. YOUR DEVICE CONTAINS A LOW POWER TRANSMITTER. WHEN DEVICE IS TRANSMITTED IT SENDS OUT RADIO FREQUENCY (RF) SIGNAL. NOTE: THE MANUFACTURER IS NOT RESPONSIBLE FOR ANY RADIO OR TV INTERFERENCE CAUSED BY UNAUTHORIZED MODIFICATIONS TO THIS EQUIPMENT. SUCH MODIFICATIONS COULD VOID THE USER'S AUTHORITY TO OPERATE THE EQUIPMENT.



RF warning statement

The device has been evaluated to meet general RF exposure requirement. The device can be used in portable exposure condition without restriction.

FCC Statement Tested to Comply

This device complies with Part 15 of the FCC Rules. Operation is subject to the following two conditions: 1. This device may not cause harmful interference, and 2. This device must accept any interference received, including interference that may cause undesired operation.

NOTE: This equipment has been tested and found to comply with the limits for a Class B digital device, pursuant to Part 15 of the FCC Rules. These limits are designed to provide reasonable protection against harmful interference in a residential installation. This equipment generates uses and can radiate radio frequency energy and, if not installed and used in accordance with the instructions, may cause harmful interference to radio communications. However, there is no guarantee that interference will not occur in a particular installation. If this equipment does cause harmful interference to radio or television reception, which can be determined by turning the equipment off and on, the user is encouraged to try to correct the interference by one or more of the following measures: • Reorient or relocate the receiving antenna. • Increase the separation between the equipment and receiver. • Connect the equipment into an outlet on a circuit different from that to which the receiver is connected. • Consult the dealer or an experienced radio/TV technician for help.

Declaration of Conformity

Hereby, Targus, declares that this device is in compliance with the essential requirements and other relevant provisions of Directive 2014/53/EU.

Avis d'industrie Canada

Le présent appareil est conforme aux CNR d'Industrie Canada applicables aux appareils radio exempts de licence. L'exploitation est autorisée aux deux conditions suivantes: (1) l'appareil ne doit pas produire de brouillage, et (2) l'utilisateur de l'appareil doit accepter tout brouillage radioélectrique subi, même si le brouillage est susceptible d'en compromettre le fonctionnement.

Avis de conformité à la réglementation d'Industrie Canada Cet appareil numérique de la classe B est conforme à la norme NMB-003 du Canada.

Declaration d'exposition aux radiations RF: Cet équipement est conforme aux limites d'exposition aux rayonnements IC établies pour un environnement non contrôlé. Cet équipement doit être installé et utilisé avec un minimum de 20 cm de distance entre la source de rayonnement et votre corps.

FR Garantie

GARANTEE LIMITÉE À 2 ANS: nous sommes fiers de la qualité de nos produits. Pour avoir des informations complètes sur nos garanties et une liste de nos bureaux à travers le monde, veuillez consulter le site www.targus.com.

La garantie produite de Targus ne couvre pas tout appareil ou produit non fabriqué par Targus (notamment les ordinateurs portables, smartphones, périphériques ou autres produits pouvant être utilisés en lien avec le produit Targus). Targus est une marque déposée de Targus International LLC aux États-Unis et dans certains autres pays. Tous les logos et marques déposées sont la propriété de leurs détenteurs respectifs. ©2018 Targus International LLC, 1211 North Miller St., Anaheim, CA 92806. Tous droits réservés.

Enregistrement du produit

Targus vous recommande d'enregistrer votre accessoire Targus quant à votre résidence et les caractéristiques du produit. Vous devez indiquer votre nom complet, votre adresse e-mail, votre pays de résidence et les caractéristiques du produit.

Assistance technique

Pour de plus amples informations, veuillez consulter le site:

- US targus.com/us/support 1.800.283.6325
CAN Internet: targus.com/ca/support
EMEA targus.com/FR/support +33 (0)1-6453-9151
Australie targus.com/au/support 1800.641.645 (NZ 0800.633.222)
Amérique latine soporte@targus.com

RF warning statement

The device has been evaluated to meet general RF exposure requirement. The device can be used in portable exposure condition without restriction.

FCC Statement Tested to Comply

This device complies with Part 15 of the FCC Rules. Operation is subject to the following two conditions: 1. This device may not cause harmful interference, and 2. This device must accept any interference received, including interference that may cause undesired operation.

NOTE: This equipment has been tested and found to comply with the limits for a Class B digital device, pursuant to Part 15 of the FCC Rules. These limits are designed to provide reasonable protection against harmful interference in a residential installation. This equipment generates uses and can radiate radio frequency energy and, if not installed and used in accordance with the instructions, may cause harmful interference to radio communications. However, there is no guarantee that interference will not occur in a particular installation. If this equipment does cause harmful interference to radio or television reception, which can be determined by turning the equipment off and on, the user is encouraged to try to correct the interference by one or more of the following measures: • Reorient or relocate the receiving antenna. • Increase the separation between the equipment and receiver. • Connect the equipment into an outlet on a circuit different from that to which the receiver is connected. • Consult the dealer or an experienced radio/TV technician for help.

Declaration of Conformity

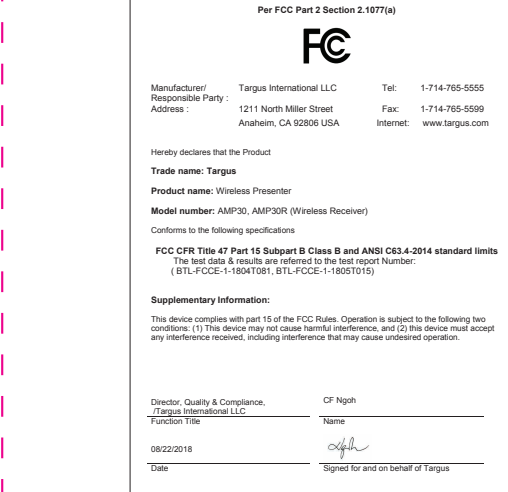
Hereby, Targus, declares that this device is in compliance with the essential requirements and other relevant provisions of Directive 2014/53/EU.

Industry Canada Statement

This device complies with Industry Canada's licence-exempt RSSB. Operation is subject to the following two conditions: (1) this device may not cause interference, and (2) this device must accept any interference, including interference that may cause undesired operation of the device.

Industry Canada Class B Emission Compliance Statement This Class B digital apparatus complies with Canadian ICES-003.

RF Radiation Exposure Statement: For body worn operation, this phone has been tested and meets RF exposure guidelines when used with an accessory that contains no metal. Use of other accessories may not ensure compliance with RF exposure guidelines.



RF warning statement

The device has been evaluated to meet general RF exposure requirement. The device can be used in portable exposure condition without restriction.

FCC Statement Tested to Comply

This device complies with Part 15 of the FCC Rules. Operation is subject to the following two conditions: 1. This device may not cause harmful interference, and 2. This device must accept any interference received, including interference that may cause undesired operation.

NOTE: This equipment has been tested and found to comply with the limits for a Class B digital device, pursuant to Part 15 of the FCC Rules. These limits are designed to provide reasonable protection against harmful interference in a residential installation. This equipment generates uses and can radiate radio frequency energy and, if not installed and used in accordance with the instructions, may cause harmful interference to radio communications. However, there is no guarantee that interference will not occur in a particular installation. If this equipment does cause harmful interference to radio or television reception, which can be determined by turning the equipment off and on, the user is encouraged to try to correct the interference by one or more of the following measures: • Reorient or relocate the receiving antenna. • Increase the separation between the equipment and receiver. • Connect the equipment into an outlet on a circuit different from that to which the receiver is connected. • Consult the dealer or an experienced radio/TV technician for help.

Declaration of Conformity

Hereby, Targus, declares that this device is in compliance with the essential requirements and other relevant provisions of Directive 2014/53/EU.

Avis d'industrie Canada

Le présent appareil est conforme aux CNR d'Industrie Canada applicables aux appareils radio exempts de licence. L'exploitation est autorisée aux deux conditions suivantes: (1) l'appareil ne doit pas produire de brouillage, et (2) l'utilisateur de l'appareil doit accepter tout brouillage radioélectrique subi, même si le brouillage est susceptible d'en compromettre le fonctionnement.

Avis de conformité à la réglementation d'Industrie Canada Cet appareil numérique de la classe B est conforme à la norme NMB-003 du Canada.

Declaration d'exposition aux radiations RF: Cet équipement est conforme aux limites d'exposition aux rayonnements IC établies pour un environnement non contrôlé. Cet équipement doit être installé et utilisé avec un minimum de 20 cm de distance entre la source de rayonnement et votre corps.

Warranty

2 YEAR LIMITED WARRANTY: We pride ourselves on the quality of our products. For complete warranty details and a list of our worldwide offices, please visit www.targus.com.

Targus product warranty does not cover any device or product that is not manufactured by Targus (including, but not limited to, laptops, smartphones, devices, or any other product that may be used in connection with the Targus product). Targus is a registered trademark of Targus International LLC in the US and in certain other countries. All logos and registered trademarks are the property of their respective owners. ©2018 Targus International LLC, 1211 North Miller St., Anaheim, CA 92806. All rights reserved.

Product Registration

Targus recommends that you register your Targus accessory shortly after purchasing it. Go to targus.com/us/product\_registration You will need to provide your full name, email address, country of residence and product information.

Technical Support

For technical questions, please visit:

- US targus.com/us/support 1.800.283.6325
CAN Internet: targus.com/ca/support
EMEA targus.com/UK/support +44 (0)20-7744-0330
Australie targus.com/au/support 1800.641.645 (NZ 0800.633.222)
Latin America soporte@targus.com

AUSTRALIAN AND NEW ZEALAND CONSUMERS ONLY

Thank you for your purchase. Targus warrants to the original purchaser that its products are free from defects in materials and workmanship, during the specified warranty period, and lasts as long as the original purchaser owns the product. The warranty period is stated on the packaging or in the documentation provided with this Targus product. Targus' Limited Product Warranty excludes damage caused by accident, neglect, abuse, misuse, improper care, normal wear and tear, ownership transfer, or alteration. The limited warranty also excludes any product that is not manufactured by Targus (including, without limitation, laptops, smartphones, devices, tablets, or any other non-Targus item) that is used in connection with the Targus product. In the event that the Targus product has a defect in materials or workmanship Targus will, after receiving a warranty claim and inspecting the product, at its discretion, do one of the following: repair, replace, or refund with the same or a similar product (or part) or to the effect of ship it to the original purchaser at Targus' expense. As part of this inspection, proof of purchase will be required. There is no charge for inspection. To make a warranty claim, please contact Targus Australia or New Zealand (see details below), or return the product to the place of purchase. The original purchaser must bear the cost of the delivery to Targus.

Under Australian and/or New Zealand Consumer Laws, in addition to any warranty Targus gives, our products come with guarantees that cannot be excluded. You are entitled to a replacement or refund for a major failure and compensation for any other reasonably foreseeable loss or damage. You are entitled to have the products repaired or replaced if they fail to be of acceptable quality and the failure does not amount to a major failure. For any warranty question, contact Targus Australia Pty. Ltd. (b) by mail at Suite 2, Level 8, 5 Rider Boulevard, Rhodes NSW 2138, by phone AUS 1800 641 645 or NZ 0800 633 222 or by Email: info@targus.com. For additional information, check out our website at targus.com/au/warranty.aillure.



410-3821-001A