

ZW32 Smart Outlet Manual

FCC/IC

Federal Communications Commission (FCC) Statement

FCC Caution: Any changes or modifications not expressly approved by the party responsible for compliance could void the user's authority to operate this equipment.

This device complies with Part 15 of the FCC Rules. Operation is subject to the following two conditions: (1) This device may not cause harmful interference, and (2) this device must accept any interference received, including interference that may cause undesired operation.

NOTE: This equipment has been tested and found to comply with the limits for a Class B digital device, pursuant to Part 15 of the FCC Rules. These limits are designed to provide reasonable protection against harmful interference in a residential installation. This equipment generates, uses and can radiate radio frequency energy and, if not installed and used in accordance with the instructions, may cause harmful interference to radio communications. However, there is no guarantee that interference will not occur in a particular installation. If this equipment does cause harmful interference to radio or television reception, which can be determined by turning the equipment off and on, the user is encouraged to try to correct the interference by one or more of the following measures: Reorient or relocate the receiving antenna. Increase the separation between the equipment and receiver. Connect the equipment into an outlet on a circuit different from that to which the receiver is connected. Consult the dealer or an experienced radio/TV technician for help. This equipment should be installed and operated with minimum distance 20cm between the radiator and your body.

IC Caution:

This device complies with Industry Canada licence-exempt RSS standard(s). Operation is subject to the following two conditions: (1) this device may not cause interference, and (2) this device must accept any interference, including interference that may cause undesired operation of the device.

DECLARATION DE CONFORMITE D'INDUSTRIE CANADA

Le présent appareil est conforme aux CNR d'Industrie Canada applicables aux appareils radio exempts de licence. L'exploitation est autorisée aux deux conditions suivantes :

- (1) l'appareil ne doit pas produire de brouillage;
- (2) l'utilisateur de l'appareil doit accepter tout brouillage radioélectrique subi, même si le brouillage est susceptible d'en compromettre le fonctionnement.

WARRANTY

Show Home Products warrants this product to be free from manufacturing defects for a period of two years from the original date of consumer purchase. This warranty is limited to the repair or replacement of this product only and does not extend to consequential or incidental damage to other products that may be used with this product.

This warranty is in lieu of all other warranties, expressed or implied. Some states do not allow limitations on how long an implied warranty lasts or permit the exclusion or limitation of incidental or consequential damage, so the above limitations may not apply to you.

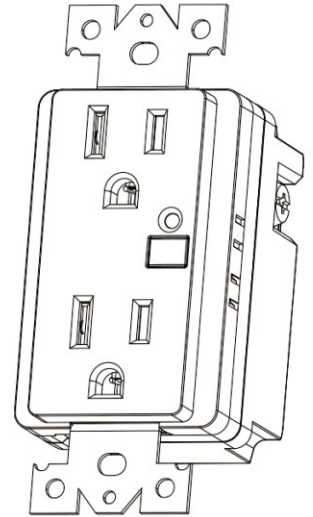
This warranty gives you specific rights, and you may also have other rights which vary from state to state. If the unit should prove defective within the warranty period.

SPECIFICATIONS

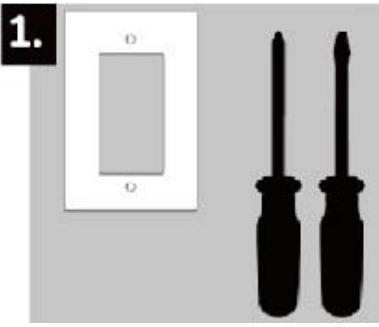
Model: ZW32
 Power: 120 VAC, 60 Hz.
 Signal (Frequency): 908.42 MHz.
 Maximum Loads: 600W, incandescent,
 ½ HP Motor or 1800W (15A) Resistive
 Range: Up to 100 feet line of sight between the
 Wireless Controller and the closest Z-Wave
 receiver module.
 Operating Temperature Range: 32-104° F (0-40° C)
 For indoor use only.
 Specifications subject to change without notice
 due to continuing product improvement
 Website www.ishowlights.com

WARNING

RISK OF FIRE
 RISK OF ELECTRICAL SHOCK
 RISK OF BURNS
 CONTROLLING APPLIANCES:
 EXERCISE EXTREME CAUTION WHEN USING Z-WAVE
 DEVICES TO CONTROL APPLIANCES. OPERATION
 OF THE Z-WAVE DEVICE MAY BE IN A DIFFERENT
 ROOM THAN THE CONTROLLED APPLIANCE, ALSO AN
 UNINTENTIONAL ACTIVATION MAY OCCUR IF THE WRONG
 BUTTON ON THE REMOTE IS PRESSED. Z-WAVE DEVICES
 MAY AUTOMATICALLY BE POWERED ON DUE TO TIMED
 EVENT PROGRAMMING. DEPENDING UPON THE APPLI-
 ANCE, THESE UNATTENDED OR UNINTENTIONAL OP-
 ERATIONS COULD POSSIBLY RESULT IN A HAZARDOUS
 CONDITION. FOR THESE REASONS, WE RECOMMEND
 DO NOT RETURN THIS PRODUCT TO THE STORE
 THE FOLLOWING:
 DO NOT USE Z-WAVE DEVICES TO CONTROL ELECTRIC
 HEATERS OR ANY OTHER APPLIANCES WHICH MAY PRE-
 SENT A HAZARDOUS CONDITION DUE TO UNATTENDED OR
 UNINTENTIONAL OR AUTOMATIC POWER ON CONTROL.

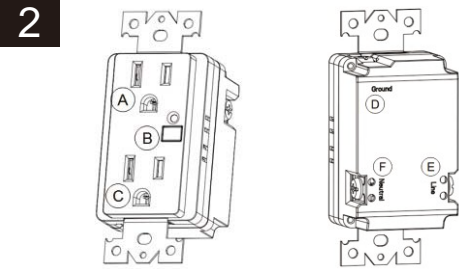


In-wall smart outlet

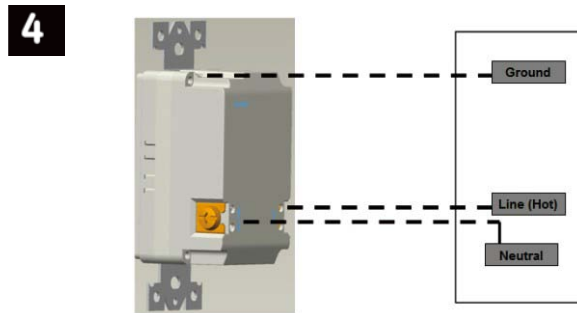


Getting To Know Your New Z-Wave Device

- One Z-wave remote controlled outlet
- Remote ON/OFF control via the Z-Wave controller/network
- Manual ON/OFF control with the manual/program button
- One Always-ON pass through outlet
- Blue LED indicates outlet location in a dark room



- | | |
|-----------------------------|--------------------|
| A. Always-on outlet | D. Ground (green) |
| B. Manual/Program Button | E. Line (Hot) |
| C. Z-Wave controlled outlet | F. Neutral (White) |



Step:

1. Remove stripped insulation from wires of Z-Wave outlet.
2. Hold stripped ends together in parallel and align any frayed strands.
3. Push wires firmly into a wire nut. Twist the wire nut clockwise with fingers until tight. Pull wires to check for tightness.
4. Use the included wire nuts to make the following connections: A. Connect the green wire from the controlled outlet to the green or bare ground wire removed from the old outlet. B. Connect the white wire from the controlled outlet to the neutral (white) wire removed from the old outlet. C. Connect the black wire from the controlled outlet to the Line/hot (black) wire removed from the old outlet.
5. Insert Z-Wave controlled outlet into the box being careful not to pinch or crush wires.
6. Secure the controlled outlet to the box using the supplied screws.
7. Mount the wall plate.
8. Reapply power to the circuit at fuse box or circuit breaker and test the system.

Linking your device

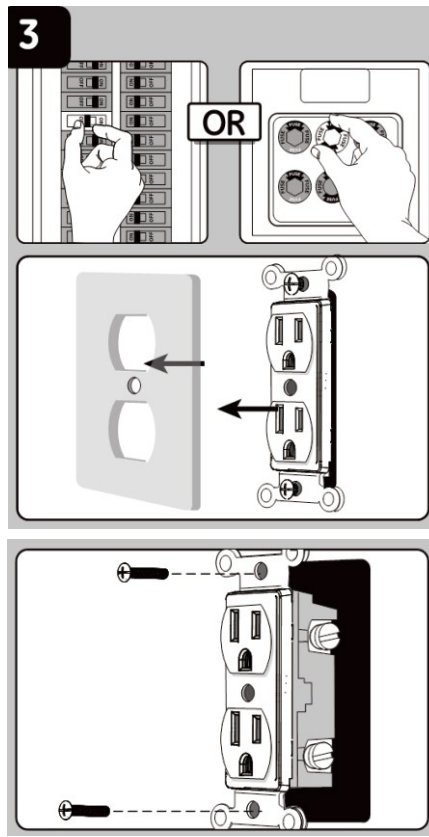
1. Follow the instructions for your Z-wave certified controller to include a device to the Z-wave network.
2. Once the controller is ready to include your device, press and release the Program Button to include it in the network.

Note: Your controller may need to be within 10 feet of the device to be included.

3. Once your controller has confirmed that the device has been included, refresh the Z-wave network to optimize performance.

Please reference the controller/gateway's manual for instructions. Now you have complete control to turn your fixture ON/OFF according to groups, scenes, schedules and interactive automations programmed by your controller. If your Z-wave certified controller features Remote Access, you can now control your fixture from your mobile devices.

Note: To exclude and reset the device, follow the instructions provided by your Z-Wave controller.



Step:

1. Shut off power to the circuit at circuit breaker or fuse box.
2. Remove wall plate.
3. Remove the outlet mounting screws.
4. Carefully remove the outlet from the outlet box.
5. Disconnect the wires from the existing outlet. Be careful to label wires according to the previous terminal connection.
6. There are three terminal on the Z-Wave smart outlet.
 - A. GROUND — Green
 - B. Neutral — White
 - C. Line (Hot) — Black (connected to power) Match these to the wires connected on the existing outlet.

Warning: Verify power is OFF to switch box before continuing

Observe Important Wiring Information

Always follow the recommended wire strip lengths and wiring combination when making wiring connections. You may wish to consult a electrician with questions or for professional installation.

Important: The wire connectors included with this receptacle are intended to only be used with copper wire. Consult a qualified electrician if you have aluminum wiring.

Wire Gauge Requirements

Use 14 AWG or larger wires suitable for at least 80° C for supplying HOT, neutral, ground and connections.

