

ZW30 Smart Switch Manual

FCC/IC

Federal Communications Commission (FCC) Statement

FCC Caution: Any changes or modifications not expressly approved by the party responsible for compliance could void the user's authority to operate this equipment.

This device complies with Part 15 of the FCC Rules. Operation is subject to the following two conditions: (1) This device may not cause harmful interference, and (2) this device must accept any interference received, including interference that may cause undesired operation.

NOTE: This equipment has been tested and found to comply with the limits for a Class B digital device, pursuant to Part 15 of the FCC Rules.

These limits are designed to provide reasonable protection against harmful interference in a residential installation. This equipment generates, uses and can radiate radio frequency energy and, if not installed and used in accordance with the instructions, may cause harmful interference to radio communications.

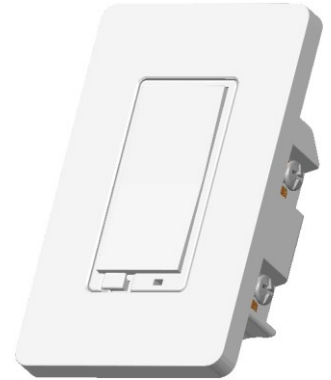
However, there is no guarantee that interference will not occur in a particular installation.

If this equipment does cause harmful interference to radio or television reception, which can be determined by turning the equipment off and on, the user is encouraged to try to correct the interference by one or more of the following measures:

- Reorient or relocate the receiving antenna.
- Increase the separation between the equipment and receiver.
- Connect the equipment into an outlet on a circuit different from that to which the receiver is connected.
- Consult the dealer or an experienced radio/TV technician for help.

IC Caution:

This device complies with Industry Canada licence-exempt RSS standard(s). Operation is subject to the following two conditions: (1) this device may not cause interference, and (2) this device must accept any interference, including interference that may cause undesired operation of the device.



In-wall smart switch

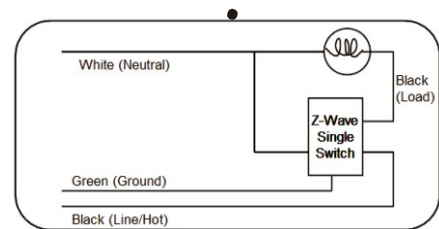
Le présent appareil est conforme aux CNR d'Industrie Canada applicables aux appareils radio exempts de licence. L'exploitation est autorisée aux deux conditions suivantes : (1) l'appareil ne doit pas produire de brouillage; (2) l'utilisateur de l'appareil doit accepter tout brouillage radioélectrique subi, même si le brouillage est susceptible d'en compromettre le fonctionnement.

WARRANTY

Show Home Products warrants this product to be free from manufacturing defects for a period of two years from the original date of consumer purchase. This warranty is limited to the repair or replacement of this product only and does not extend to consequential or incidental damage to other products that may be used with this product.

This warranty is in lieu of all other warranties, expressed or implied. Some states do not allow limitations on how long an implied warranty lasts or permit the exclusion or limitation of incidental or consequential damage, so the above limitations may not apply to you.

This warranty gives you specific rights, and you may also have other rights which vary from state to state. If the unit should prove defective within the warranty period.



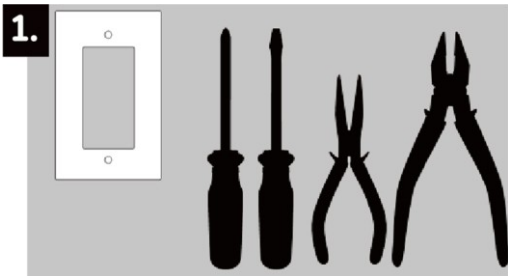
SPECIFICATIONS

- Model: ZW30
- Power: 120 VAC, 60 Hz.
- Signal (Frequency): 908.42 MHz.
- Maximum Loads: 600W, incandescent, ½ HP Motor or 1800W (15A) Resistive
- Range: Up to 100 feet line of sight between the Wireless Controller and the closest Z-Wave receiver module.
- Operating Temperature Range: 32-104° F (0-40° C)
- For indoor use only.
- Specifications subject to change without notice due to continuing product improvement

Website www.ishowlights.com

WARNING

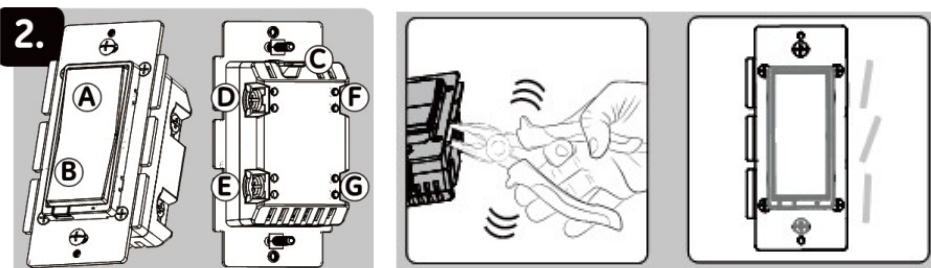
RISK OF FIRE
 RISK OF ELECTRICAL SHOCK
 RISK OF BURNS
 CONTROLLING APPLIANCES:
 EXERCISE EXTREME CAUTION WHEN USING Z-WAVE DEVICES TO CONTROL APPLIANCES. OPERATION OF THE Z-WAVE DEVICE MAY BE IN A DIFFERENT ROOM THAN THE CONTROLLED APPLIANCE, ALSO AN UNINTENTIONAL ACTIVATION MAY OCCUR IF THE WRONG BUTTON ON THE REMOTE IS PRESSED. Z-WAVE DEVICES MAY AUTOMATICALLY BE POWERED ON DUE TO TIMED EVENT PROGRAMMING. DEPENDING UPON THE APPLIANCE, THESE UNATTENDED OR UNINTENTIONAL OPERATIONS COULD POSSIBLY RESULT IN A HAZARDOUS CONDITION. FOR THESE REASONS, WE RECOMMEND DO NOT RETURN THIS PRODUCT TO THE STORE THE FOLLOWING:
 DO NOT USE Z-WAVE DEVICES TO CONTROL ELECTRIC HEATERS OR ANY OTHER APPLIANCES WHICH MAY PRESENT A HAZARDOUS CONDITION DUE TO UNATTENDED OR UNINTENTIONAL OR AUTOMATIC POWER ON CONTROL.



Getting To Know Your New Z-Wave Device

Turn ON/OFF manually or remotely via the Z-Wave controller

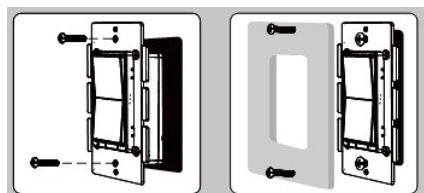
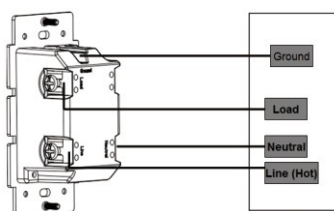
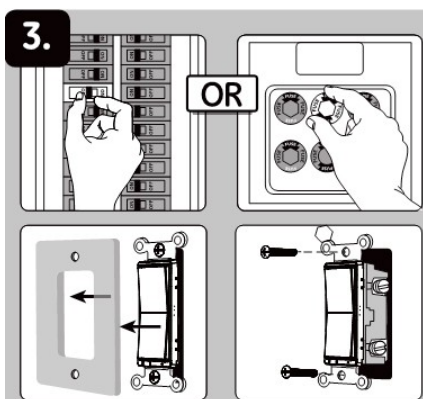
- Can be included in multiple Groups and Scenes
- May be used in single pole installation or with up to two GE Add-on switches in 3-way or 4-way wiring configurations
- Compatible with all incandescent and CFL/LED bulbs
- Interchangeable Paddle switch — White & light almond paddle in package
- Uses a standard, decorative-size wall plate for single gang installations (wall plate not included)
- Blue LED indicates switch location in a dark room
- Z-Wave Certified for simple pairing and integrated home automation
- Screw Terminal Installation — requires wiring connections for Line (Hot), Load, Neutral, and Ground. Traveler wire required for 3-way or 4-way installation



- A. Top Rocker — (Press & release to turn Dimmer on, press & hold increases brightness)
 B. Bottom Rocker — (Press & release to turn switch off)
 C. Ground (Green/Bare)
 D. Load (Black) E. Line (Black)
 F. Traveler (Red/Other)
 G. Neutral (White)

Single, Dual And Triple Gang Boxes

When installing the In-wall Smart Dimmer in multiple gang boxes it may be necessary to break off one or both sides of the scored tabs on the front yoke. This will affect the electrical rating of the switch (see specifications for details)



WARNING — SHOCK HAZARD

Turn OFF the power to the branch circuit for the switch and lighting fixture at the service panel. All wiring connections must be made with the POWER OFF to avoid personal injury and/or damage to the switch. This device is intended for installation in accordance with the National Electric Code and local regulations in the United States, or the Canadian Electrical Code and local regulations in Canada. If you are unsure or uncomfortable about performing this installation consult a qualified electrician.

Multi-switch wiring

For 3-way installations, please refer to Add-on Switch manual

Single switch wiring

Before you start; you may wish to change the paddle to match your wall plate or decore. Please proceed to section 5.

1. Shut off power to the circuit at circuit breaker or fuse box.

IMPORTANT! Verify power is OFF to switch box before continuing.

2. Remove wall plate.

3. Remove the switch mounting screws.

4. There are up to five screw terminals on the switch; these are marked

A. LINE (Hot) — Black (connected to power)
 B. Neutral — White

C. LOAD — Black (connected to lighting)

D. GROUND — Green/Bare

E. TRAVELER — Red/Other (only in 3-way installations)

Match these screw terminals to the wires connected to the existing switch.

5. Observe Important Wiring Information

IMPORTANT! This Dimmer is rated for and intended to only be used with copper wire.

Wire Gauge Requirements

Use 14 AWG or larger wires suitable for at least 80° C for supplying Line (HOT), Load, Neutral, Ground and Traveler connections.

Wire strip length:

For attachment to screw terminals: Strip insulation 1" (25mm)

For attachment using the enclosure's holes: Strip insulation 5/8" (16mm)

UL specifies that the tightening torque for the screws is 12 Kgf-cm.

6. Connect the green copper ground wire to the GROUND terminal.

7. Connect the black wire that goes to the light to the terminal marked LOAD.

8. Connect the black wire that comes from the electrical service panel (Hot) to the terminal marked LINE.

9. Connect the white wire to the neutral terminal (use jumper wire if needed).

Note: The Traveler terminal is only used for 3-way or 4-way wiring and should remain insulated if the switch is installed in a 2-way system (one switch & one load).

10. Insert Switch into the switch box being careful not to pinch or crush wires.

11. Secure the Switch to the box using the supplied screws.

12. Mount the wall plate.

13. Reapply power to the circuit at fuse box or circuit breaker and test the system.

Basic Operation

The connected light can be turned ON/OFF in two ways,

1. Manually from the front panel of the In-wall Switch

2. Remotely with a Z-Wave Controller

Manual Control

The Front Panel Rocker Switch allows the user to:

Turn ON/OFF the connected fixture.

To turn the connected fixture ON: Press and release the top of the rocker.

To turn the connected fixture OFF: Press and release the bottom of the rocker.

Linking your device

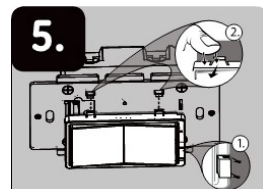
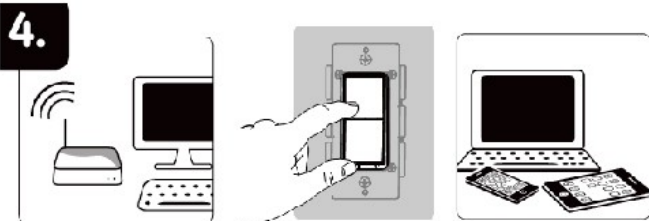
1. Follow the instructions for your Z-wave certified controller to include a device to the Z-wave network.

2. Once the controller is ready to include your device, press and release the Program Button to include it in the network.

Note: Your controller may need to be within 10 feet of the device to be included.

3. Once your controller has confirmed that the device has been included, refresh the Z-wave network to optimize performance. Please reference the controller, gateway's manual for instructions. Now you have complete control to turn your fixture ON/OFF according to groups, scenes, schedules and interactive automations programmed by your controller. If your Z-wave certified controller features Remote Access, you can now control your fixture from your mobile devices.

Note: To exclude and reset the device, follow the instructions provided by your Z-Wave controller.



To Change Color Of The Paddle

This step is optional. Before you start you may want to change the color of the paddle to match your wallplate or decor.

1. Lift the Air Gap tab at the base of the paddle.

2. Push side tabs in on one side and then the other to release paddle. Lift the cover up and off.

3. Simply put the new paddle onto the switch by inserting the air gap and side tabs and snapping securely into place.

Once this step has been completed please return to section 3.