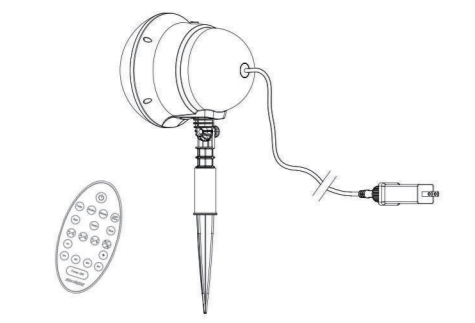


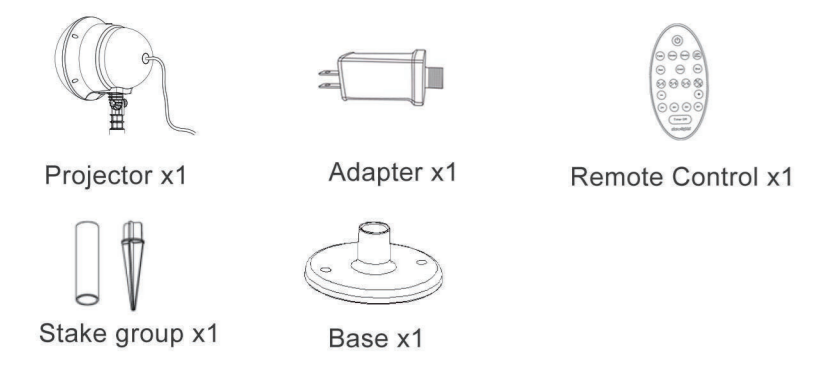


#2127327

SUPER PROJECTOR INSTRUCTION MANUAL



PACKAGE CONTENTS

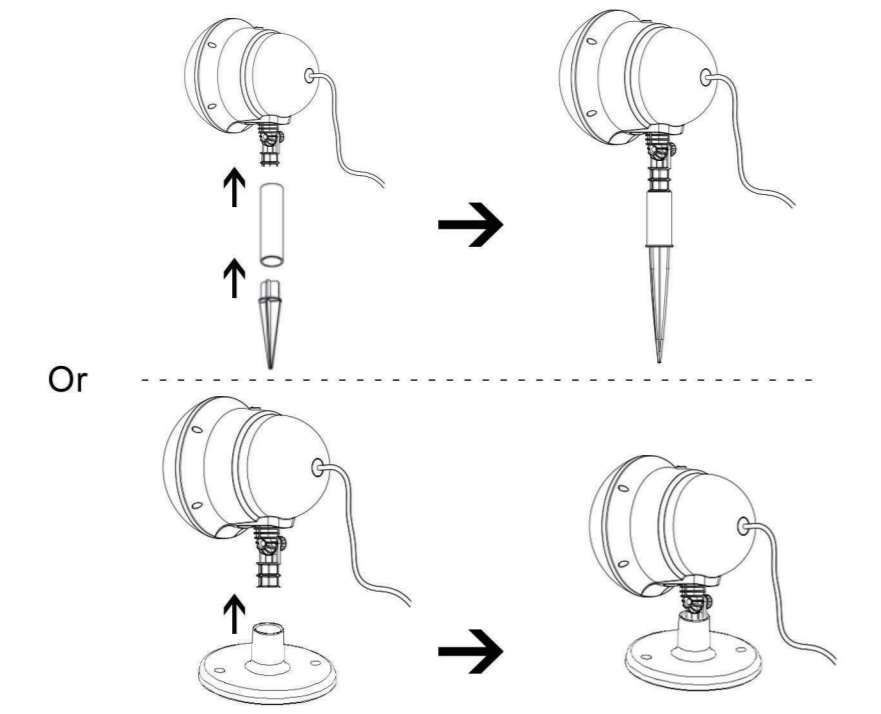


PRODUCT DESCRIPTION

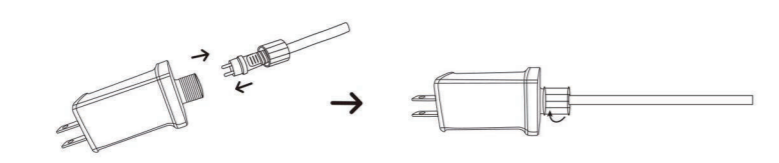
Specification
 Input: 120V~ 60Hz, 0.25A
 Output: 12V, 1A
 Lights: Red/Green/Blue Led
 Operation: indoor/outdoor
 Operating Temperature: -15°F to 90°F (-26°C to 32°C)
 Dim.: 7.5 in * 6 in *17.5 in
 Projection Coverage: 60Ft * 60Ft
 Warranty: One Year Limited

INSTALLATION

1. Screw the stake into the holder to secure the projector.
 Or screw the base to secure the projector.



2. Connect Adapter as figure shows.



PRODUCT DESCRIPTION

1. Built-in timer function: 6hrs on, 18hrs off.
 2. Press the button to switch light modes.
 3. Press and hold the button 2s to turn off the lights.

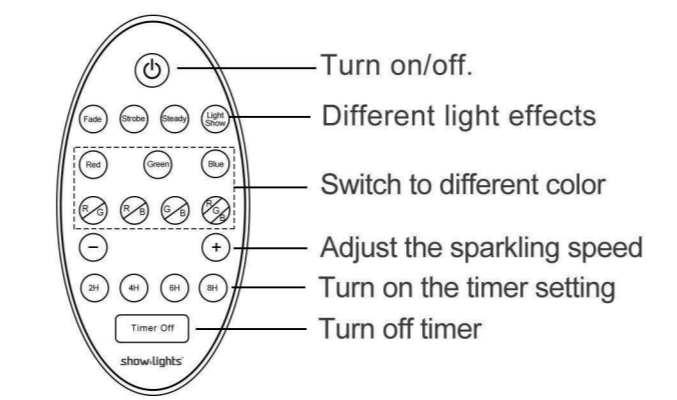
PRODUCT DESCRIPTION

Button Function

- Press and hold the button more than 2 seconds to turn off.
- Press the button to switch 7 different light modes.
 Modes as below:
 - Red lights sparking
 - Green lights sparking
 - Red and Green sparking
 - Blue lights sparking
 - Red and blue sparking
 - Green and Blue sparking
 - RGB sparking
- Momery Function: Power off, when short press the button to turn on, the projector will stay at the last mode.

REMOTE CONTROL

1. Remove the insulating tape from the battery compartment before use.
 2. Remote Control description.



REMOTE CONTROL

Battery installation:
 If the Remote Control does not work, check batteries.
 1. slide the battery cover off.
 2. Insert Battery AAA*2pcs.

WARNING: This is not a toy and is not intended for use by children.
 (A). Do not dispose of the battery in fire as the battery may leak and explore.
 (B). Do not mix old and new batteries and not mix alkaline, standard(carbon-zinc), or rechargeable (nickel-cadmium) batteries.
 (C). Exhausted batteries are to be removed from the product.
 (D). Dispose of battery properly by following directions on battery.
 (E). Use AAA batteries only. Use of other batteries may damage remote control.
 (F). Safe for indoor use.
 (G). Do not expose the Remote Control to moisture.

CAUTION

- Do not place product near any heat source such as radiators, stoves, fireplaces, etc.
- Do not use in a bathroom.
- Do not secure the wiring of the product with staples or nails or place on sharp hooks or nails.
- Do not close doors or windows on the product or product cord as this may damage the wire insulation.
- Do not cover the product with cloth, paper or any material not part of the product when in use.
- Do not operate unit with damaged plug.
- Do not operate unit if it has been subjected to damage in anyway.

WARNING

- Always ensure light set is unplugged when installed.
- This is an electric product-not a toy! To avoid risk of fire, burns, personal injury and electric shock it should not be played with or placed where small children can reach it.
- Do not use this product for other than its intended use.
- Do not disassemble adaptor. Disassembly may result in a risk of electric shock or fire.

FCC Verification User Manual

FEDERAL COMMUNICATIONS COMMISSION (FCC) STATEMENT

FCC Caution.
 This device complies with part 15 of the FCC Rules. Operation is subject to the following two conditions: (1) This device may not cause harmful interference, and (2) this device must accept any interference received, including interference that may cause undesired operation. Any Changes or modifications not expressly approved by the party responsible for compliance could void the users authority to operate the equipment.

NOTE:This equipment has been tested and found to comply with the limits for a Class B digital device, pursuant to part 15 of the FCC Rules. These limits are designed to provide reasonable protection against harmful interference in a residential installation. This equipment generates uses and can radiate radio frequency energy and, if not installed and used in accordance with the instructions, may cause harmful interference to radio communications.

However, there is no guarantee that interference will not occur in a particular installation. If this equipment does cause harmful interference to radio or television reception, which can be determined by turning the equipment off and on, the user is encouraged to try to correct the interference by one or more of the following measures:
 -Reorient or relocate the receiving antenna.
 -Increase the separation between the equipment and receiver.
 -Connect the equipment into an outlet on a circuit different from that to which the receiver is connected.
 -Consult the dealer or an experienced radio/TV technician for help.

Verificación FCC Manual del usuario

COMISIÓN FEDERAL DE COMUNICACIONES (FCC,POR SUS SIGLAS ENINGLÉS)DECLARACIÓN

Precaución de la FCC
 Este dispositivo cumple con la sección 15 de las normas de la FCC. El funcionamiento está sujeto a las siguientes condiciones:(1) este dispositivo no causa interferencias dañinas. (2) este dispositivo aceptará cualquier interferencia recibida, incluyendo las interferencias que pueden causar un funcionamiento no deseado.Aviso: Los cambios o modificaciones realizados en esta unidad que no estén aprobados expresamente por la parte responsable del cumplimiento podrían anular la autoridad del usuario para utilizar el equipo.

NOTA: Este equipamiento ha sido comprobado y se considera que cumple con los límites para un dispositivo digital de clase B, según la parte 15 de las Normas FCC. Estos límites se establecen para proporcionar una protección razonable contra interferencias nocivas en una instalación residencial. Este equipo genera, utiliza y puede irradiar energía de radiofrecuencia y, si no se instala y utiliza de acuerdo con las instrucciones, podrá causar interferencias nocivas en las comunicaciones de radio.

No obstante, no existe garantía alguna de que no ocurran interferencias en una instalación en particular. Si este equipo causa interferencias perjudiciales para la recepción de radio o televisión, lo que puede determinarse encendido y apagando el equipo, se recomienda al usuario que intente corregir la interferencia mediante una o más de las siguientes medidas:
 -Vuelva a orientar o a colocar la antena de recepción.
 -Aumente la distancia entre el equipo y el receptor.
 -Conecte el equipo en una base de enchufe de un circuito diferente al que está conectado el receptor.
 -Si necesita ayuda consulte al distribuidor o a un técnico de radio/TV.