

# Components and Tools

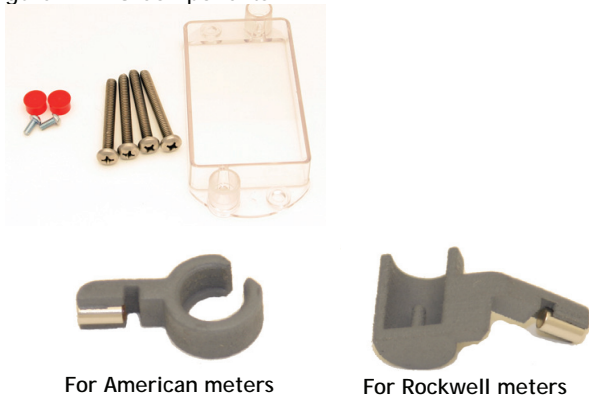


The components and tools you need to install the IMU are:

## IMU Components

Component	Qty.	Size	Part Numbers
SSN IMU	1	n/a	221-010001 (Am) 222-010001 (RW)
Index cover	1	n/a	976-000195 (Am) 976-000196 (RW)
Index cover screws	4	1/4-.20" x 2 1/4" 10-24 x 2 1/4"	901-000052 (Am) 901-000053 (RW)
Index screws	2	8-32 x 3/16" 6-32 x 3/4"	901-000054 (Am) 901-000057 (RW)
Red tamper seals	2	n/a	976-000204
Tamper magnet assembly	1	n/a	976-000212 (Am) 976-000213 (RW)

Figure 1. IMU Components



## Tools Required

Tool	Qty
Flathead screw driver	1
Phillips screw driver	1
Nut driver	1
Awl	1
Scraper	1
Wire brush	1
Service magnet	1

Figure 2. Service Magnet



## Gas IMU Quick Install



Always follow applicable standards for safety. If you smell gas, report it to the utility. Do not use power tools. Refer to the meter documentation for further information.

*The antenna of this transmitter must not be co-located or operating in conjunction with any other antenna or transmitter.*

*The device should be installed so that people will not come within 20 cm (8 in.) of the antenna.*

*This equipment has been tested and found to comply with Part 15 of the FCC Rules. This equipment generates, uses and can radiate radio frequency energy, and if not installed and used in accordance with the instructions, may cause harmful interference to radio communications. However, there is no guarantee that interference will not occur in a particular installation. If this equipment does cause harmful interference to radio or television reception, which can be determined by turning the equipment off and on, the user is encouraged to try to correct the interference by one or more of the following measures:*

- Reorient or relocate the receiving antenna.
- Increase the separation between the equipment and receiver.
- Connect the equipment into an outlet on a circuit different from that to which the receiver is disconnected.
- Consult the dealer or an experienced Radio/TV technician for help.

Modifications to the IMU not expressly approved by Silver Spring Networks may void your authority to operate the IMU.

### To remove the existing index and prepare the meter:

1. Remove the existing index cover and index from the meter.
2. Clean the meter index area and make sure to remove any remaining parts of the old gasket.

### Attach the tamper magnet assembly:

1. Attach the tamper magnet assembly to the meter as shown.

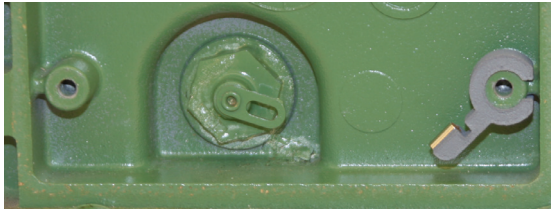


For American meters

For Rockwell meters

- On an American meter, attach the magnet assembly so that the protrusion holding the magnet points down and to the left and the gap in the

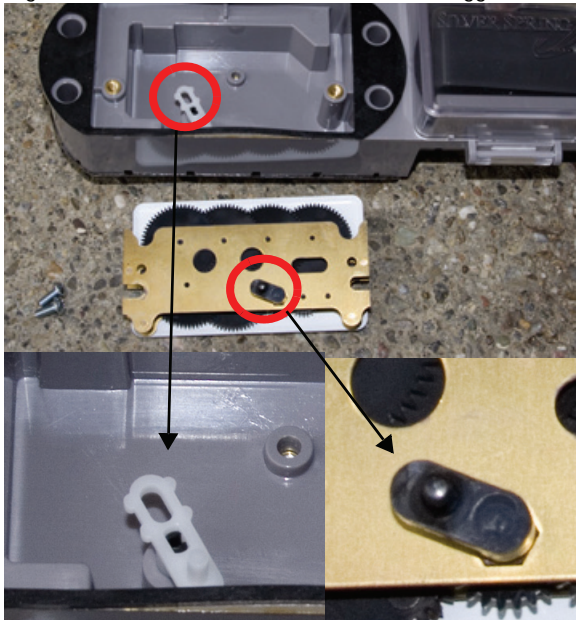
circle fits around the notch on the meter, as shown:



- On a Rockwell meter, attach the magnet assembly so that the protrusion holding the magnet points down and to the left and the inner pin is inserted into the index screw hole.

**Attach the meter index to the IMU:**

- Align the IMU drive train with the index wiggler.



- Use the two index screws to firmly attach the index to the IMU. (Torque: 13-15 in. lbs. for Rockwell; 14-17 in. lbs. for American.)

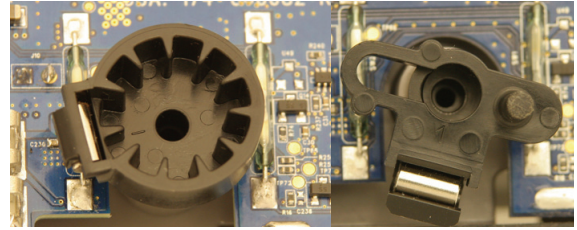


- Rotate the IMU drive train two turns, clockwise or counter-clockwise to ensure it spins freely.

**Attach the IMU assembly to the meter:**

- Insert the four cover screws through the index cover and set the cover down.

- Attach the IMU assembly to the meter so that the drive train aligns with the meter wiggler and the screw holes on the meter align with those on the cover.



*Note: The photo above shows two types of IMU drive train.*

- While holding the enclosure against the meter to maintain proper alignment, rotate the test hand to verify proper engagement.
- Attach the index cover and screws to the meter.



- Tighten the four screws firmly. (Torque: 17-20 in. lbs. for Rockwell; 25-35 in. lbs. for American.)
- Use the nut driver to push the two red tamper seals into place.



**Prepare the IMU for programming:**

- Swipe the service magnet over the top of the IMU. Doing so wakes up the IMU, enabling you to program it.

Refer to the documentation and training material for programming the IMU.