

Rev C



**FCC Part 15.247 Report EUT Photos**  
*for*  
**ITC Engineering Services, Inc. Report Number**  
**20030327-01-F15**

on  
**Gas Pulse Interface**  
[Model Number/FCC ID: OWS-963]

part number  
**1620-05002**

manufacturer  
**Silver Spring Networks, Inc.**  
**13000 West Silver Spring Drive**  
**Butler, WI 53007**

tests and report by  
**ITC Engineering Services, Inc. (ITC)**  
**9959 Calaveras Road, P.O. Box 543**  
**Sunol, California 94586**  
Tel.: (925) 862-2944  
Fax: (925) 862-9013  
E-Mail: docs@itcemc.com  
Web Site: www.itcemc.com



Lab Code: 200172-0

EN45001 Accredited Compliance Laboratory (RES-GmbH)  
Registration number: TTI-P-G 159/98-00 (RES-GmbH)

## **Table of Contents**

EUT Photographs..... 3

### **List of Figures**

Figure 1 EUT – Overhead Photo ..... 3  
Figure 2 Component Side View of Main Board ..... 3  
Figure 3 Solder Side View of Main Board (with RF Section Shield) ..... 4  
Figure 4 Overhead View of EUT with Main Board Removed ..... 4  
Figure 5 Main-Board RF Section View with Shield Cover ..... 5  
Figure 6 Main Board RF Section View with Shield Cover Removed ..... 5  
Figure 7 Component Side View of Reed Switch Board ..... 6  
Figure 8 Solder Side View of Reed Switch Board ..... 6

### EUT Photographs



Connector for External Antenna

Figure 1 EUT – Overhead Photo

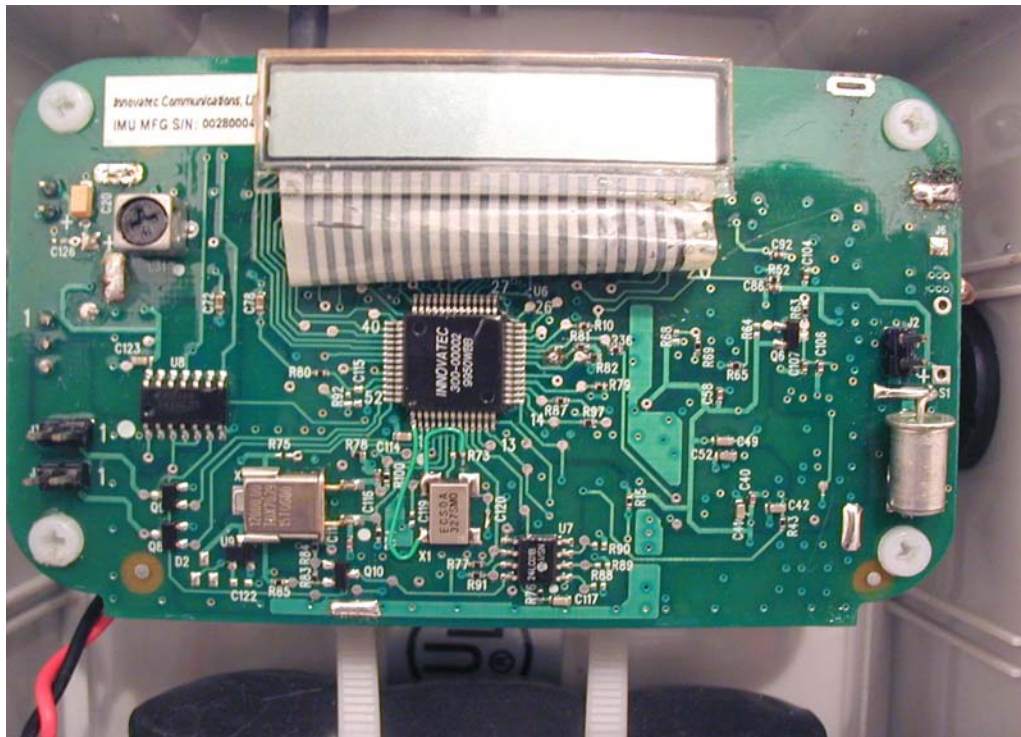
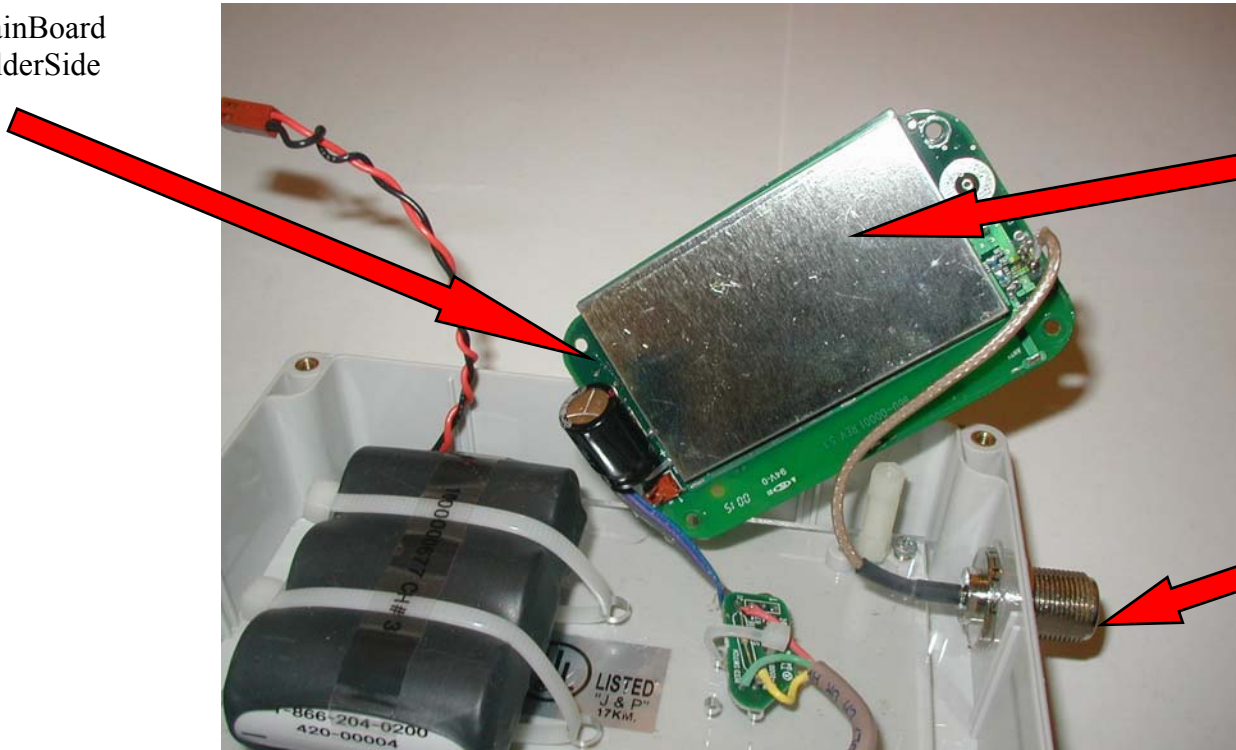


Figure 2 Component Side View of Main Board

### EUT Photographs (Cont.)

MainBoard  
SolderSide



RF Circuit Metal  
Shield Cover

(This is not a  
"plate antenna")

Connector for  
External Antenna

Figure 3 Solder Side View of Main Board (with RF Section Metal Shield Cover)

Main Board



Figure 4 Overhead View of EUT with Main Board Removed

### EUT Photographs (Cont.)

RF Circuit Metal Shield Cover

(This is not a "plate antenna")

Cable from Main Board to Connector for External Antenna



Figure 5 Main-Board RF Section View with Metal Shield Cover

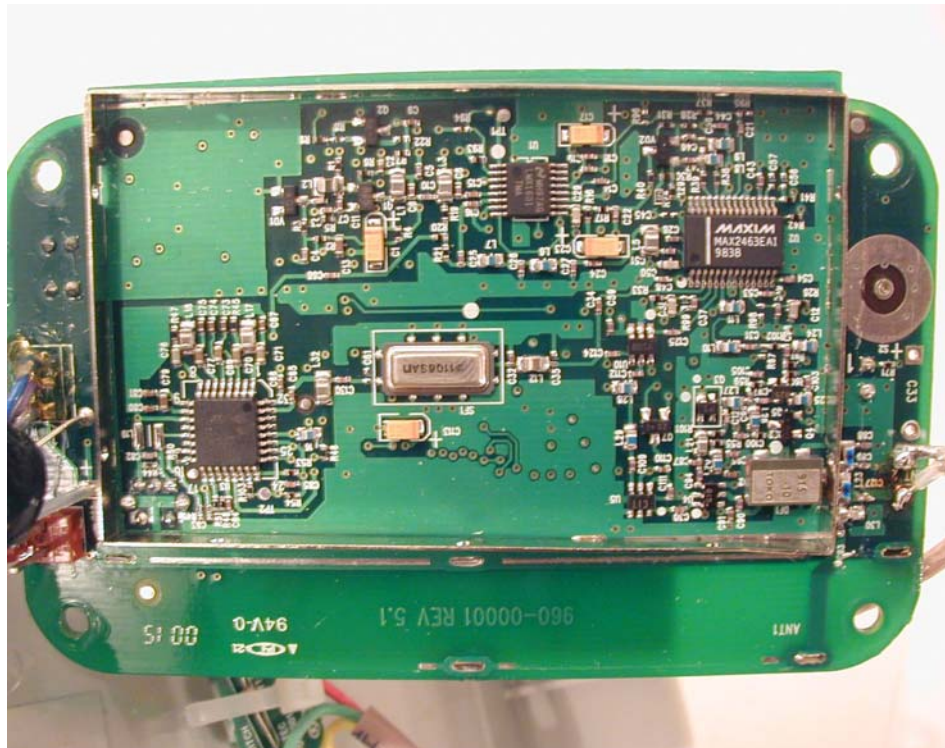


Figure 6 Main Board RF Section View (with Metal Shield Cover Removed)

### EUT Photographs (Cont.)



Figure 7 Component Side View of Reed Switch Board

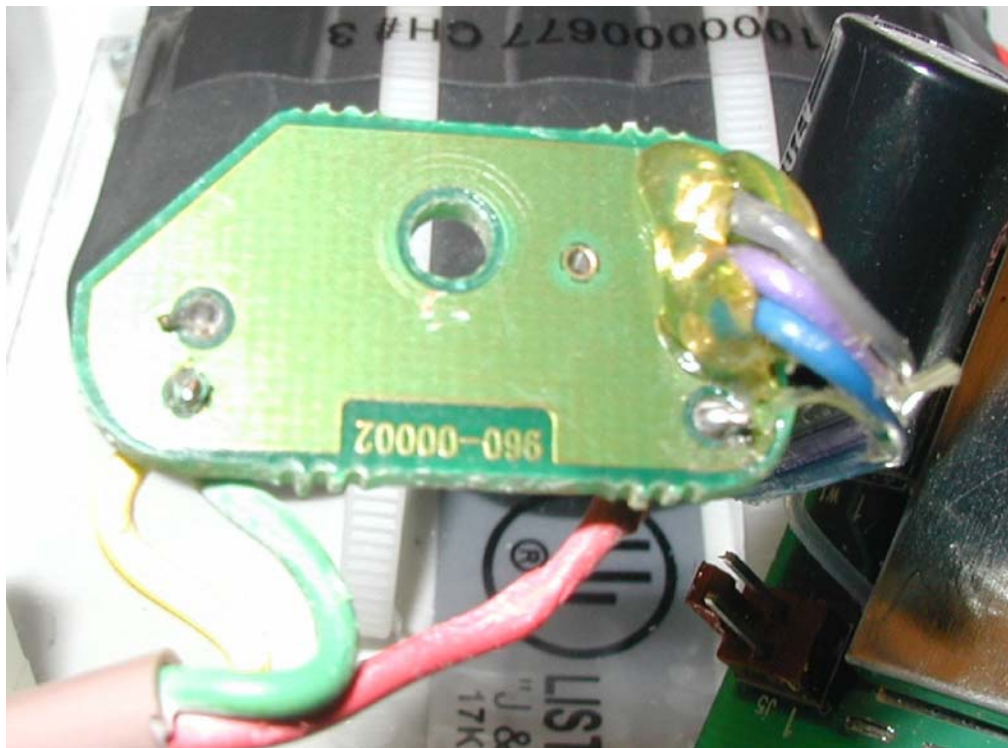


Figure 8 Solder Side View of Reed Switch Board