



FCC Internal Photographs
for
47CFR15, Subpart B for Unintentional Radiators, per Section 101
Equipment authorization of unintentional radiators,
and
47CFR15, Subpart C for Intentional Radiators, per Section 247
Operation within the bands 902 to 928 MHz

on
IMU Water Meter
[FCC ID: OWS – 940]

report number
20050519-01-F15

manufacturer
Silver Spring Networks, Inc.
13000 West Silver Spring Drive
Butler, WI 53007

judgement
Complies as tested

tests and report by
ITC Engineering Services, Inc.
9959 Calaveras Road, P.O. Box 543
Sunol, California 94586
Tel.: (925) 862-2944
Fax: (925) 862-9013
E-Mail: docs@itcemc.com
Web Site: www.itcemc.com



Lab Code: 200172-0

EN45001 Accredited Compliance Laboratory (RES-GmbH)
Registration number: TTI-P-G 159/98-00 (RES-GmbH)

Table of Contents

PART 1 GENERAL INFORMATION 3
PART 2 EUT Internal Photographs..... 4

List of Figures

Figure 1: EUT Internal View 4
Figure 2: Component View..... 4
Figure 3: Component Solder View 5
Figure 4: Component with Shield off. 5

PART 1 GENERAL INFORMATION

Product Type	IMU Water Meter	
Model	REV3 – 0000N	
Manufacturer's Name Manufacturer's Address	Silver Spring Networks Inc. 13000 West Silver Springs Drive Butler, WI 53007 United States Tel: +1 (262) 364-5317	Fax: +1 (262) 783-0205 email : juan.luglio@silverspringnetworks.com
Contact	Juan Luglio, PhD	
Test Laboratory	ITC Engineering Services, Inc. 9959 Calaveras Road, PO Box 543 Sunol, CA 94586-0543 Email: docs@itcemc.com Web Site: http://www.itcemc.com	Tel: +1(925) 862-2944 Fax: +1(925) 862-9013
Test Number and Report Numbers	20050519-01	20050519-01-F15
Test Date(s) & Issue Date	June 08 th - June 10 th , 2005	June 22 nd , 2005
Test Engineer(s)	Femi Ojo and Robert Kershaw	
Chief Engineer	Michael Gbadebo, P.E	
Documentation	George Brown.	
Test Results	<input checked="" type="checkbox"/> Complies as Tested	<input type="checkbox"/> Fail

PART 2 EUT Internal Photographs



Figure 1: EUT Internal View

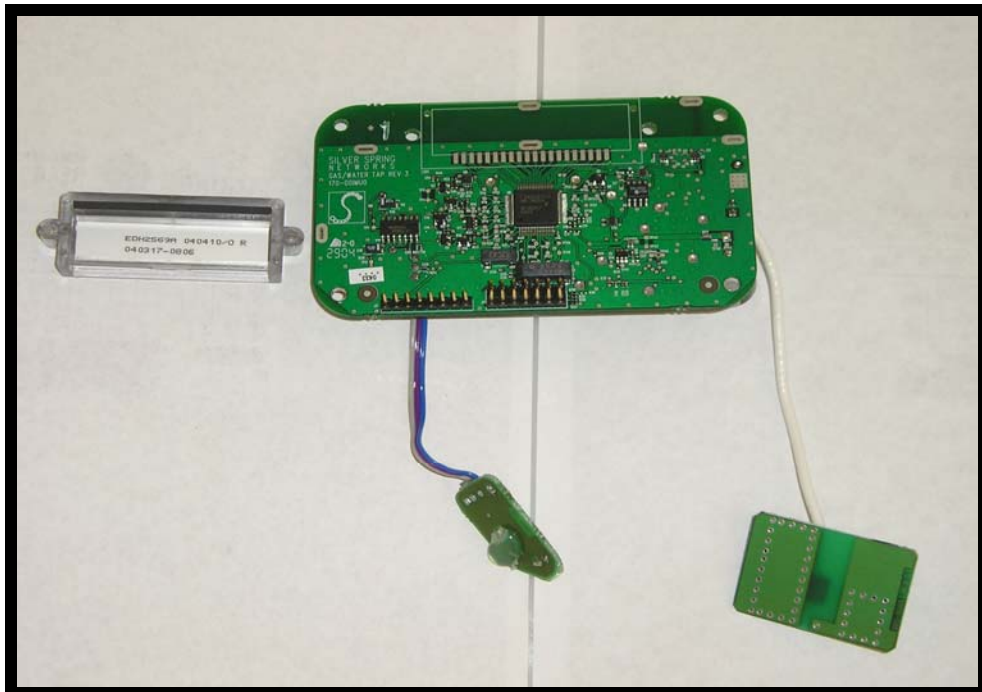


Figure 2: Component View

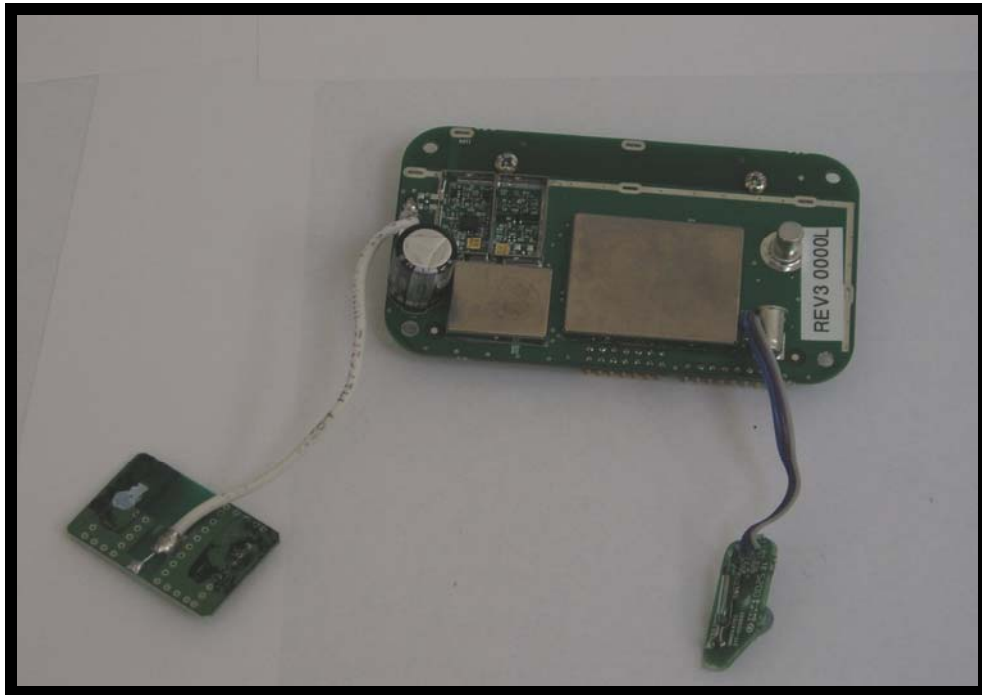


Figure 3: Component Solder View

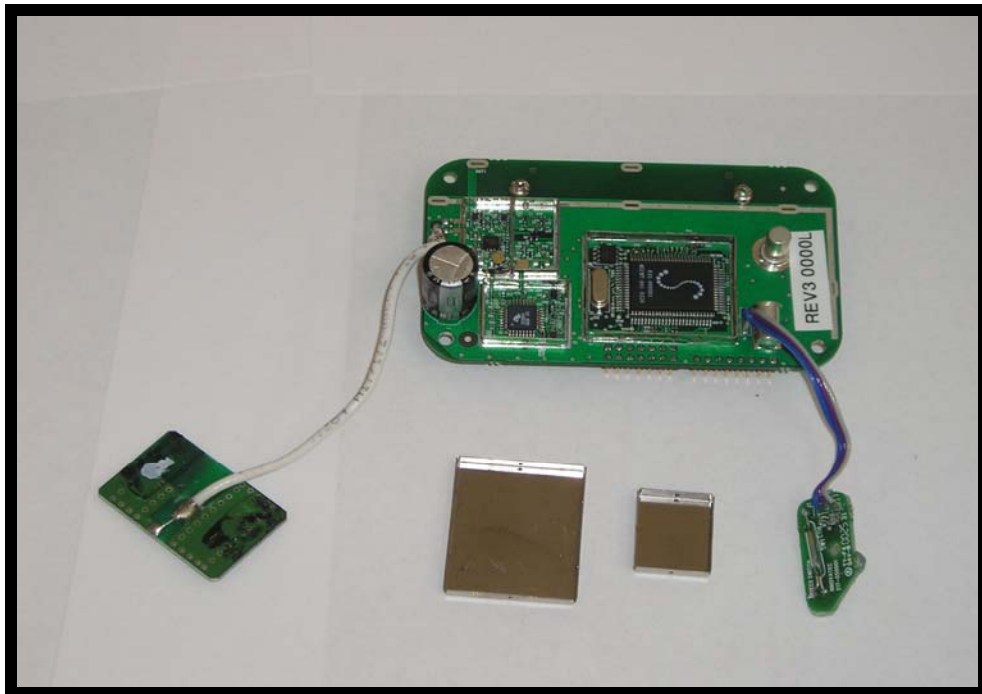


Figure 4: Component with Shield off.