



FCC Test Setup Photographs
for
47CFR15, Subpart B for Unintentional Radiators, per Section 101
Equipment authorization of unintentional radiators,
and
47CFR15, Subpart C for Intentional Radiators, per Section 247
Operation within the bands 902 to 928 MHz

on
kV2C Meter
[FCC ID: OWS-930]

models
kV2C Meter with external antenna
kV2C Meter with internal antenna

report number
20050512-02-F15

manufacturer
Silver Spring Networks, Inc.
13000 West Silver Spring Drive
Butler, WI 53007

judgement
Complies as tested

tests and report by
ITC Engineering Services, Inc.
9959 Calaveras Road, P.O. Box 543
Sunol, California 94586
Tel.: (925) 862-2944
Fax: (925) 862-9013
E-Mail: docs@itcemc.com
Web Site: www.itcemc.com



Lab Code: 200172-0

EN45001 Accredited Compliance Laboratory (RES-GmbH)
Registration number: TTI-P-G 159/98-00 (RES-GmbH)

Table of Contents

General **3**
 General Information..... 3
 RECEIVER MEASUREMENT TEST SETUP PHOTOGRAPH..... 4
 RF Measurements TEST SETUP PHOTOGRAPH..... 5

List of Figures

Figure 1: Radiated Emissions Test Setup (Front View) 4
 Figure 2 Radiated Emissions Test Setup (Rear View)..... 4
 Figure 3 General Test Set Up - Front View 5
 Figure 4 General Test Set Up - Rear View 5
 Figure 5: Spurious Emissions Front View (Below 1 GHz) 6
 Figure 6: Spurious Emissions Rear View (Below 1 GHz)..... 6
 Figure 7: Spurious Emissions Front View (Above 1 GHz)..... 7
 Figure 8: Spurious Emissions Rear View (Above 1 GHz) 7

General

GENERAL INFORMATION

Product Type Model	kV2C Meters kV2C Meter with external antenna kV2C Meter with external antenna	
Manufacturer's Name Manufacturer's Address Contact	Silver Spring Networks Inc. 13000 West Silver Springs Drive Butler, WI 53007 United States Tel: +1 (262) 364-5317 Juan Luglio, PhD	Fax: +1 (262) 783-0200 email : juan.luglio@silverspringnetworks.com
Test Laboratory	ITC Engineering Services, Inc. 9959 Calaveras Road, PO Box 543 Sunol, CA 94586-0543 Email: docs@itcemc.com Web Site: http://www.itcemc.com	Tel: +1(925) 862-2944 Fax: +1(925) 862-9013
Test Number and Report Numbers	20050512-02	20050512-02-F15
Test Date(s) & Issue Date	May 25 - May 27, 2005	June 17, 2005
Test Engineer(s)	Femi Ojo and Robert Kershaw	
Chief Engineer	Michael Gbadebo, P.E	
Documentation	George Brown.	
Test Results	<input checked="" type="checkbox"/> Complies as Tested	<input type="checkbox"/> Fail

RECEIVER MEASUREMENT TEST SETUP PHOTGRAPH



Figure 1: Radiated Emissions Test Setup (Front View)

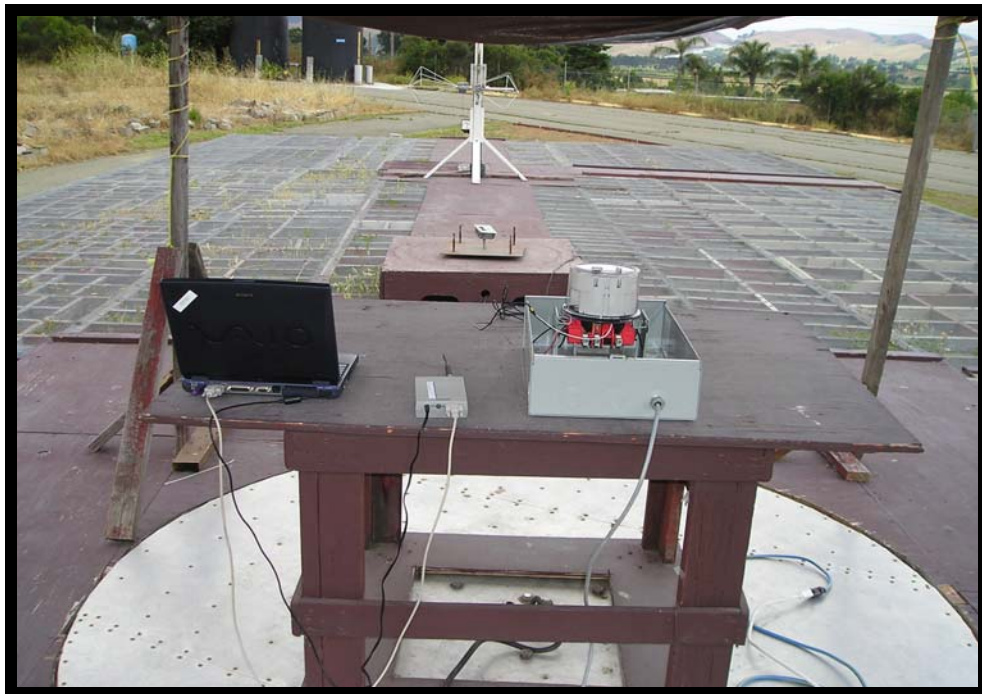


Figure 2 Radiated Emissions Test Setup (Rear View)

RF MEASUREMENTS TEST SETUP PHOTOGRAPH

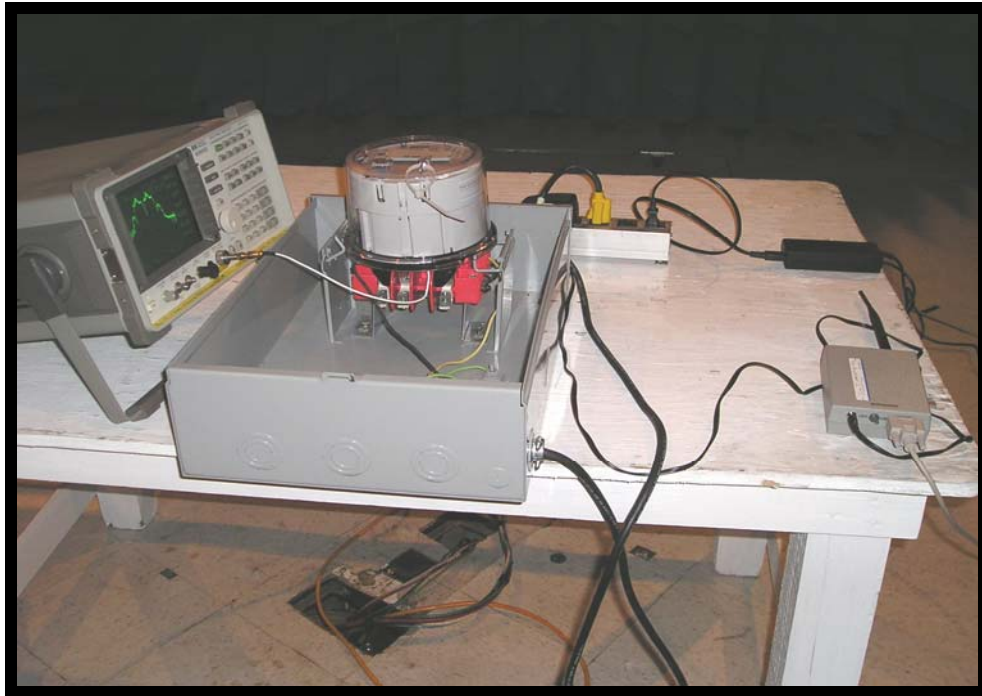


Figure 3 General Test Set Up - Front View

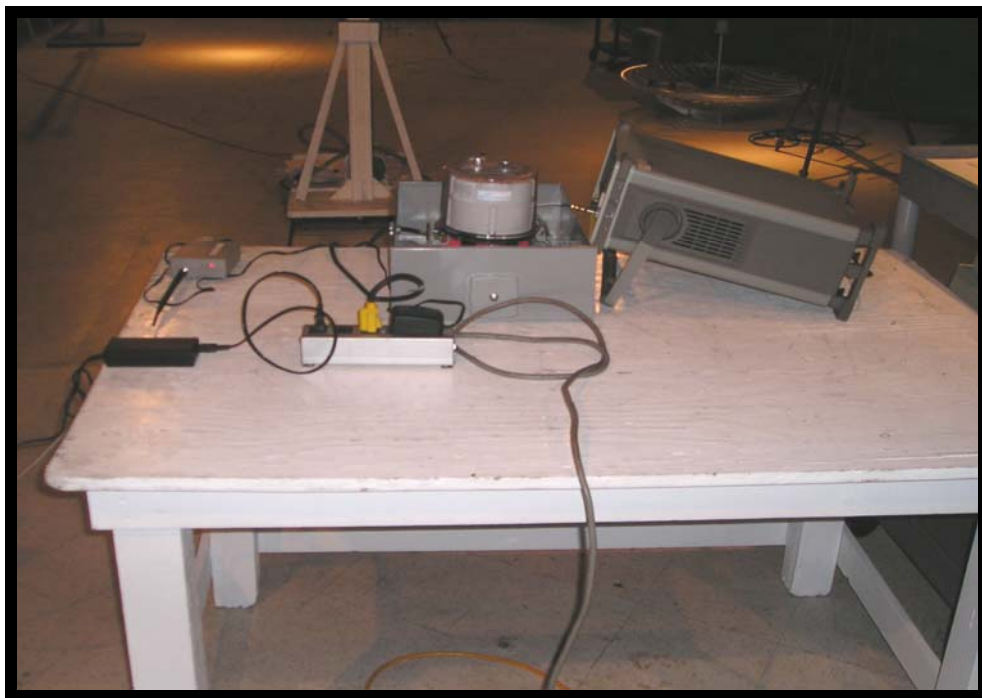


Figure 4 General Test Set Up - Rear View



Figure 5: Spurious Emissions Front View (Below 1 GHz)



Figure 6: Spurious Emissions Rear View (Below 1 GHz)

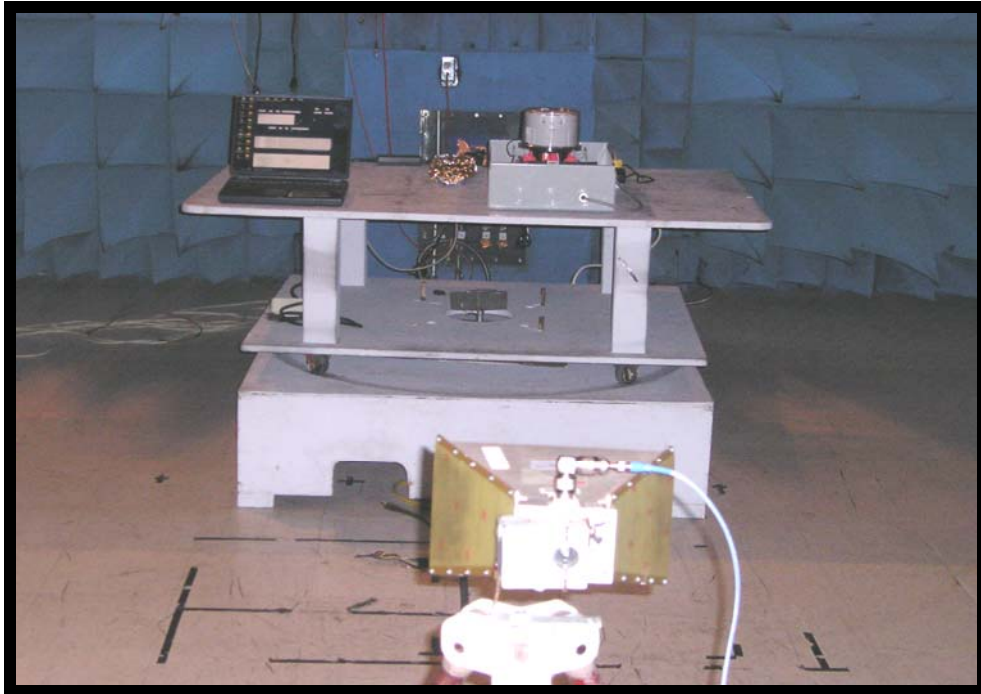


Figure 7: Spurious Emissions Front View (Above 1 GHz)

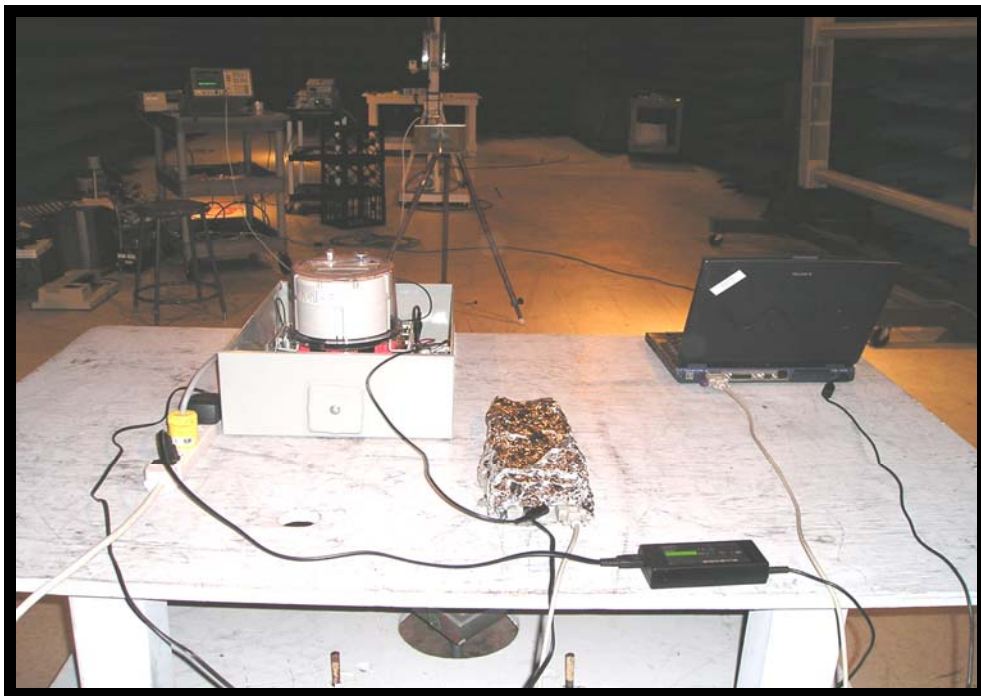


Figure 8: Spurious Emissions Rear View (Above 1 GHz)