



FCC Test Setup photographs
for
47CFR15, Subpart B for Unintentional Radiators, per Section 101
Equipment authorization of unintentional radiators,
and
47CFR15, Subpart C for Intentional Radiators, per Section 247
Operation within the bands 902 to 928 MHz

on
Battery Field Service Unit (BFSU)
[FCC ID: OWS – 923]

models
Battery Field Service Unit with External Antenna
Battery Field Service Unit with Internal Antenna

report number
20050629-02-F15

manufacturer
Silver Spring Networks, Inc.
13000 West Silver Spring Drive
Butler, WI 53007

judgement
Complies as tested

tests and report by
ITC Engineering Services, Inc.
9959 Calaveras Road, P.O. Box 543
Sunol, California 94586
Tel.: (925) 862-2944
Fax: (925) 862-9013
E-Mail: docs@itcemc.com
Web Site: www.itcemc.com



Lab Code: 200172-0

EN45001 Accredited Compliance Laboratory (RES-GmbH)
Registration number: TTI-P-G 159/98-00 (RES-GmbH)

Table of Contents

PART 1 GENERAL INFORMATION..... 3
PART 2 TEST SETUP PHOTOGRAPHS. 4

List of Figures

Figure 1: Radiated Emissions Test Setup (Below 1 GHz) Front View 4
Figure 2 Radiated Emissions Test Setup (Below 1 GHz) Rear View..... 4
Figure 3: Radiated Emissions Test Setup (Above 1 GHz) Front View 5
Figure 4: Radiated Emissions Test Setup (Above 1 GHz) Rear View 5
Figure 5 Test Set Up Photos – (Front View) 6
Figure 6 Test Set Up Photos – (Rear View) 6
Figure 7: Power Spectral Density Test Setup 7
Figure 8: Spurious Emissions Front View (Below 1 GHz) 7
Figure 9: Spurious Emissions Rear View (Below 1 GHz) 8
Figure 10: Spurious Emissions Front View (Above 1 GHz) 8
Figure 11: Spurious Emissions Rear View (Above 1 GHz) 9

PART 1 GENERAL INFORMATION

Product Type Model	Battery Field Service Unit(BFSU) BFSU with External Antenna BFSU with Internal Antenna.	
Manufacturer's Name Manufacturer's Address Contact	Silver Spring Networks Inc. 13000 West Silver Springs Drive Butler,WI 53007 United States Tel: +1 (262) 364-5317 Juan Luglio, PhD	Fax: +1 (262) 783-0205 email : juan.luglio@silverspringnetworks.com
Test Laboratory	ITC Engineering Services, Inc. 9959 Calaveras Road, PO Box 543 Sunol, CA 94586-0543 Email: docs@itcemc.com Web Site: http://www.itcemc.com	Tel: +1(925) 862-2944 Fax: +1(925) 862-9013
Test Number and Report Numbers	20050629 – 02	20050629 – 02 – F15
Test Date(s) & Issue Date	July 08 –July 12,2005	July 19, 2005
Test Engineer(s)	Femi Ojo and Robert Kershaw	
Chief Engineer	Michael Gbadebo, P.E	
Documentation	George Brown.	
Test Results	<input checked="" type="checkbox"/> Complies as Tested	<input type="checkbox"/> Fail

Prepared By: ITC Engineering Services, Inc.
9959 Calaveras Road, PO Box 543
Sunol, California 94586-0543
Tel: [925] 862-2944 Fax: [925] 862-9013
Email: docs@itcemc.com Web: www.itcemc.com

Product: Battery Field Service Unit (BFSU)
Models: BFSU with External Antenna
BFSU with Internal Antenna

PART 2 Test Setup Photographs.



Figure 1: Radiated Emissions Test Setup (Below 1 GHz) Front View



Figure 2 Radiated Emissions Test Setup (Below 1 GHz) Rear View

Prepared By: ITC Engineering Services, Inc.
9959 Calaveras Road, PO Box 543
Sunol, California 94586-0543
Tel: [925] 862-2944 Fax: [925] 862-9013
Email: docs@itcenc.com Web: www.itcenc.com

Product: Battery Field Service Unit (BFSU)
Models: BFSU with External Antenna
BFSU with Internal Antenna

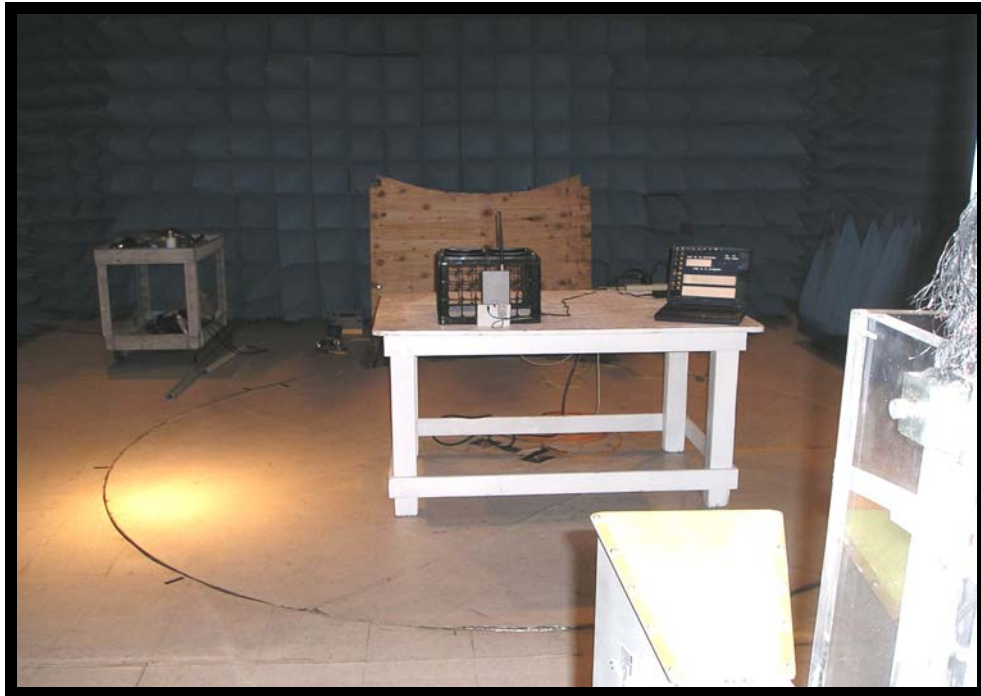


Figure 3: Radiated Emissions Test Setup (Above 1 GHz) Front View

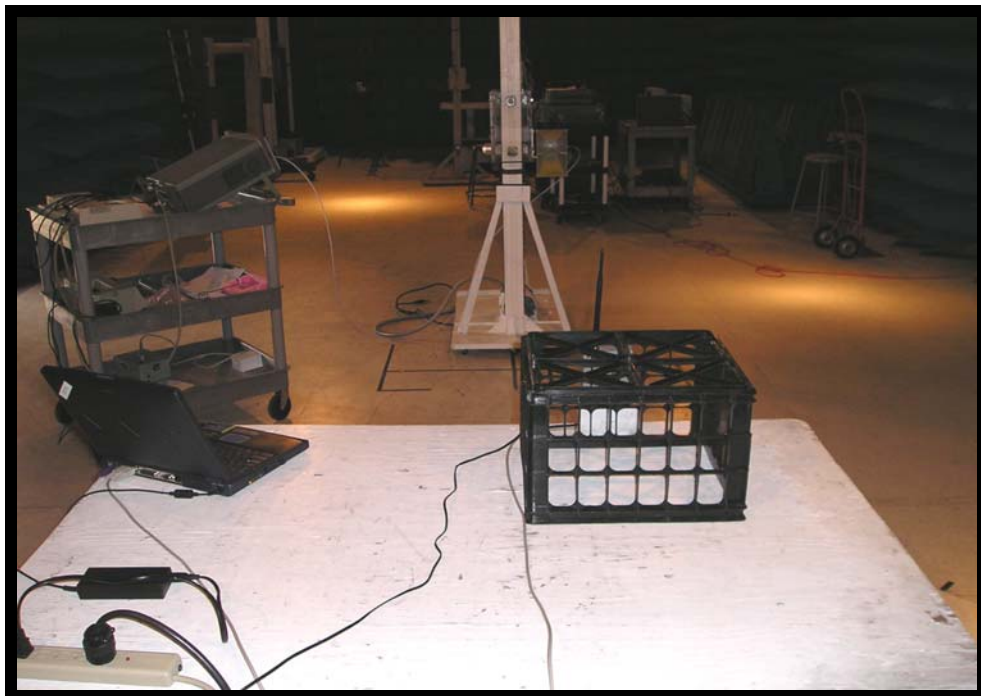


Figure 4: Radiated Emissions Test Setup (Above 1 GHz) Rear View

RF Conducted Measurements

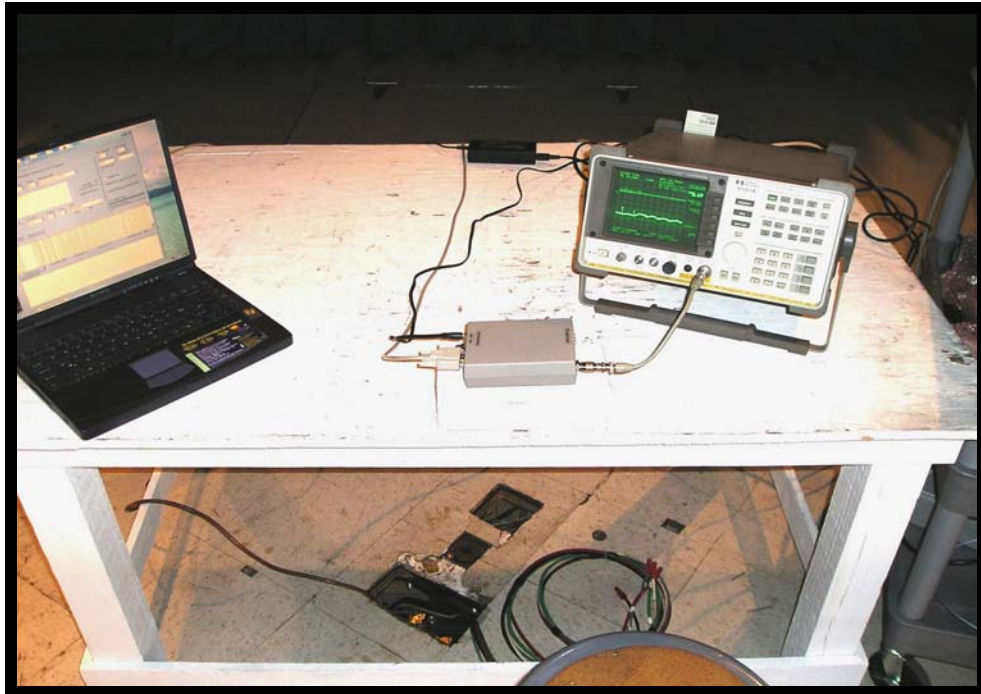


Figure 5 Test Set Up Photos – (Front View)

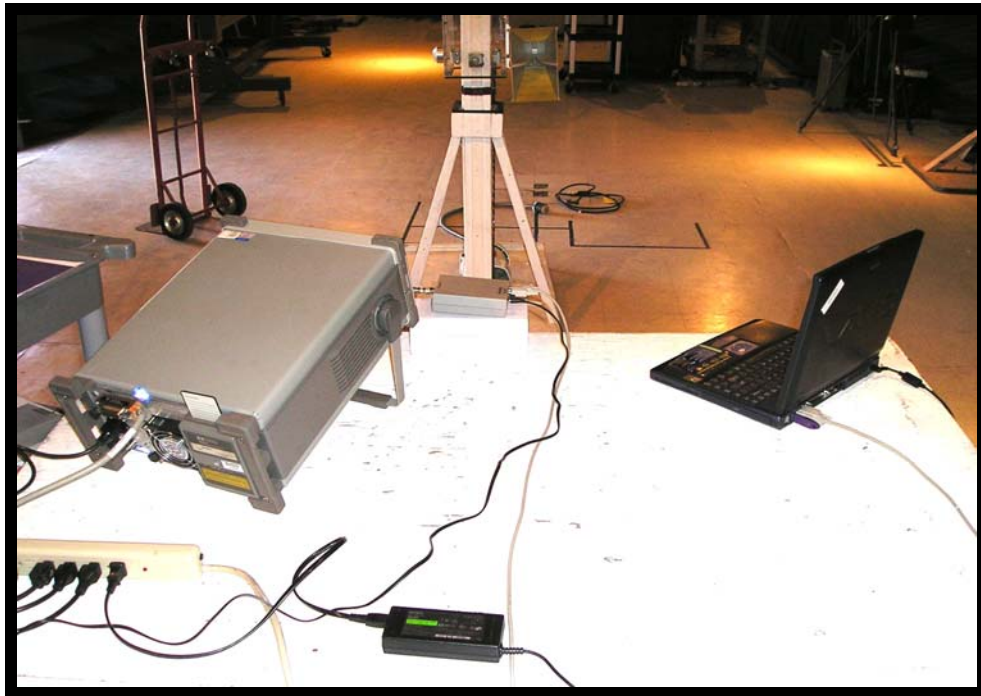


Figure 6 Test Set Up Photos – (Rear View)

Prepared By: ITC Engineering Services, Inc.
9959 Calaveras Road, PO Box 543
Sunol, California 94586-0543
Tel: [925] 862-2944 Fax: [925] 862-9013
Email: docs@itcenc.com Web: www.itcenc.com

Product: Battery Field Service Unit (BFSU)
Models: BFSU with External Antenna
BFSU with Internal Antenna

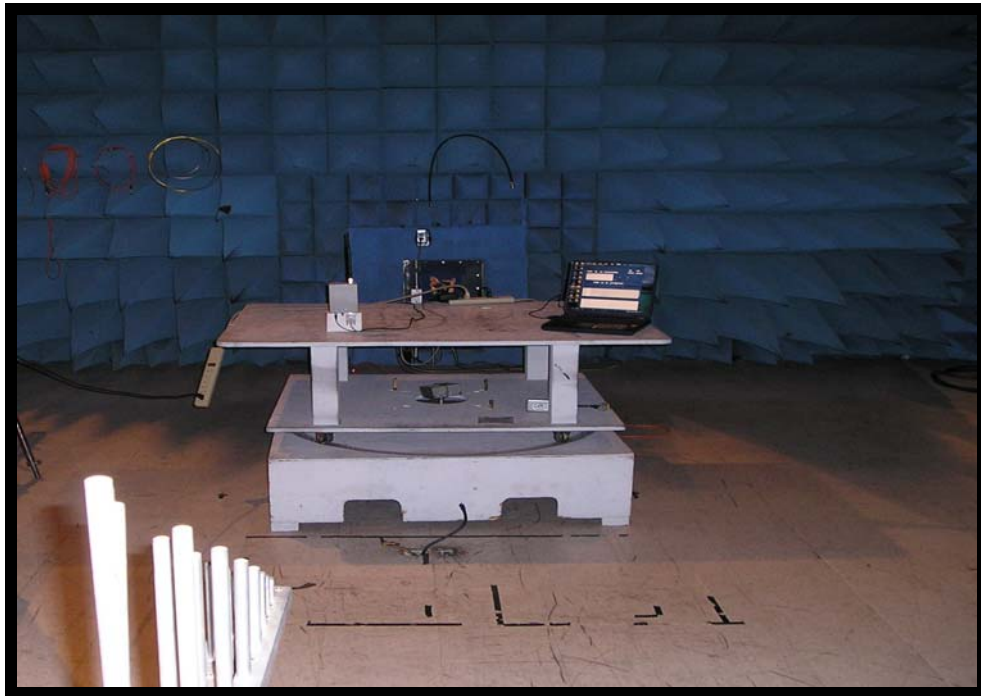


Figure 7: Power Spectral Density Test Setup



Figure 8: Spurious Emissions Front View (Below 1 GHz)

Prepared By: ITC Engineering Services, Inc.
9959 Calaveras Road, PO Box 543
Sunol, California 94586-0543
Tel: [925] 862-2944 Fax: [925] 862-9013
Email: docs@itcemc.com Web: www.itcemc.com

Product: Battery Field Service Unit (BFSU)
Models: BFSU with External Antenna
BFSU with Internal Antenna



Figure 9: Spurious Emissions Rear View (Below 1 GHz)

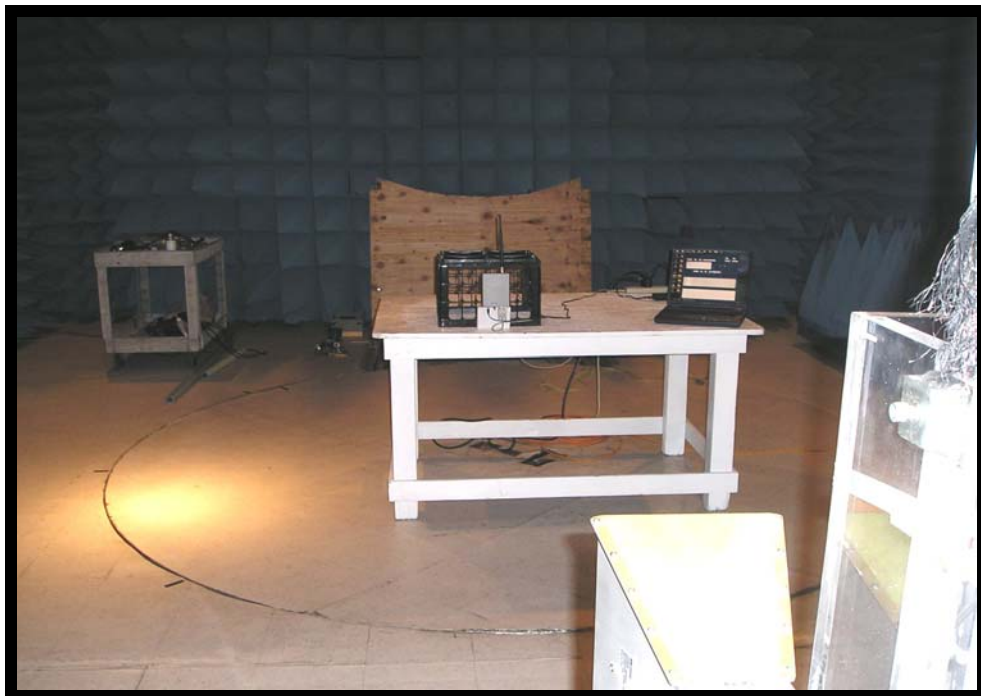


Figure 10: Spurious Emissions Front View (Above 1 GHz)

Prepared By: ITC Engineering Services, Inc.
9959 Calaveras Road, PO Box 543
Sunol, California 94586-0543
Tel: [925] 862-2944 Fax: [925] 862-9013
Email: docs@itcenc.com Web: www.itcenc.com

Product: Battery Field Service Unit (BFSU)
Models: BFSU with External Antenna
BFSU with Internal Antenna

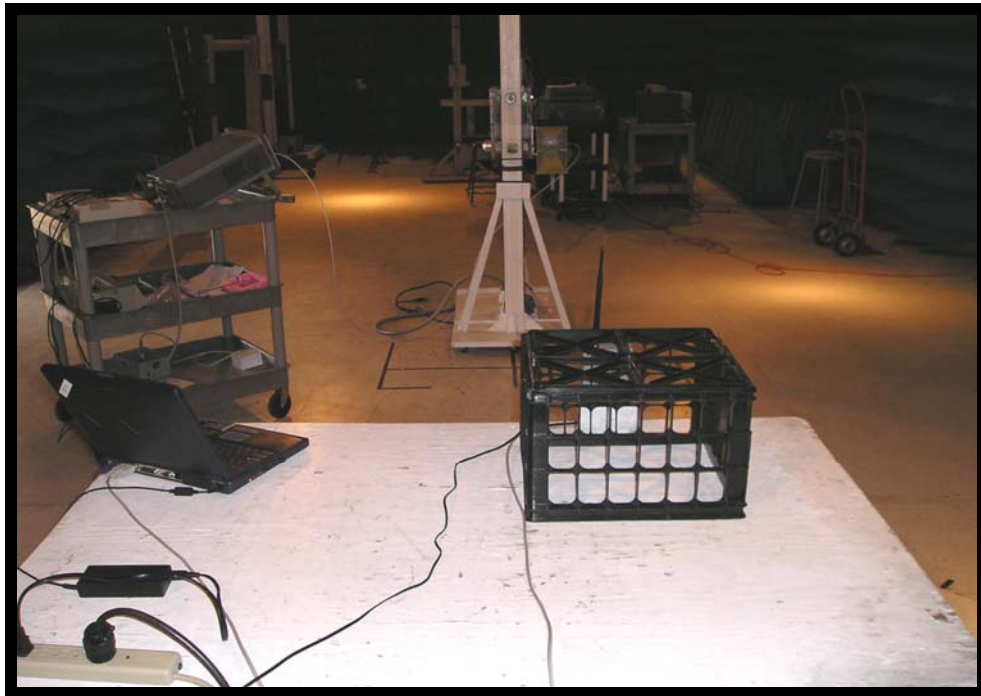


Figure 11: Spurious Emissions Rear View (Above 1 GHz)