



**FCC EUT Internal Photographs**  
*for*  
**47CFR15, Subpart B for Unintentional Radiators, per Section 101**  
**Equipment authorization of unintentional radiators, and**  
**47CFR15, Subpart C for Intentional Radiators, per Section 247**  
**Operation within the bands 902 to 928 MHz**

on  
**CDMA Gateway**  
[FCC ID: OWS - 918]

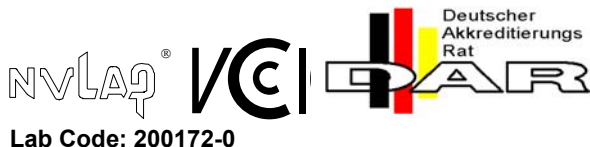
models  
**CDMA Gateway without Bandpass Filter**  
**CDMA Gateway with Bandpass Filter**

report number  
**20050512-02-F15**

manufacturer  
**Silver Spring Networks, Inc.**  
**13000 West Silver Spring Drive**  
**Butler, WI 53007**

judgement  
**Complies**

tests and report by  
**ITC Engineering Services, Inc. (ITC)**  
**9959 Calaveras Road, P.O. Box 543**  
**Sunol, California 94586**  
Tel.: (925) 862-2944  
Fax: (925) 862-9013  
E-Mail: docs@itcemc.com  
Web Site: www.itcemc.com



Lab Code: 200172-0

EN45001 Accredited Compliance Laboratory (RES-GmbH)  
Registration number: TTI-P-G 159/98-00 (RES-GmbH)

## Table of Contents

**PART 1 General..... 3**  
    General Information..... 3  
**PART 2 EUT Internal Photographs..... 4**

## List of Figures

Figure 1: EUT Internal View1 ..... 4  
Figure 2: EUT Internal View2 ..... 4  
Figure 3: EUT Component View ..... 5  
Figure 4: EUT Solder View ..... 5  
Figure 5: Component View with Shield off (View 1) ..... 6  
Figure 6: Component View with Shield off (View 2) ..... 6  
Figure 7: Component View with Shield off (View 3) ..... 7  
Figure 8: Component View with Shield off (View 4) ..... 7  
Figure 9: EUT Component View ..... 8  
Figure 10: EUT Solder View ..... 8

## PART 1 General

### GENERAL INFORMATION

<b>Product Type Model</b>	CDMA Gateway CDMA Gateway without Bandpass filter CDMA Gateway with Bandpass filter	
<b>Manufacturer's Name Manufacturer's Address  Contact</b>	Silver Spring Networks Inc. 13000 West Silver Springs Drive Butler, WI 53007 United States Tel: +1 (262) 364-5317 Juan Luglio, PhD	Fax: +1 (262) 783-0200 email : <a href="mailto:juan.luglio@silverspringnetworks.com">juan.luglio@silverspringnetworks.com</a>
<b>Test Laboratory</b>	ITC Engineering Services, Inc. 9959 Calaveras Road, PO Box 543 Sunol, CA 94586-0543 Email: <a href="mailto:docs@itcemc.com">docs@itcemc.com</a> Web Site: <a href="http://www.itcemc.com">http://www.itcemc.com</a>	Tel: +1(925) 862-2944 Fax: +1(925) 862-9013
<b>Test Number and Report Numbers</b>	20050512-03	20050512-03-F15
<b>Test Date(s) &amp; Issue Date</b>	June 09 –June 22,2005	June 22, 2005
<b>Test Engineer(s)</b>	Femi Ojo and Robert Kershaw	
<b>Chief Engineer</b>	Michael Gbadebo, P.E	
<b>Documentation</b>	George Brown.	
<b>Test Results</b>	<input checked="" type="checkbox"/> Complies as Tested	<input type="checkbox"/> Fail

## PART 2 EUT Internal Photographs

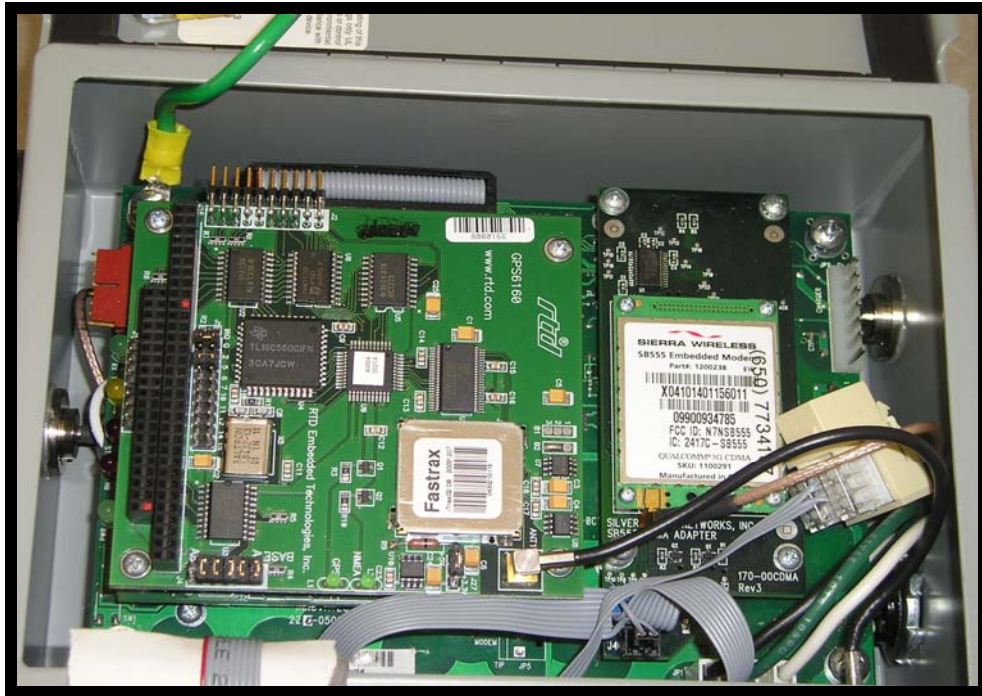


Figure 1: EUT Internal View1

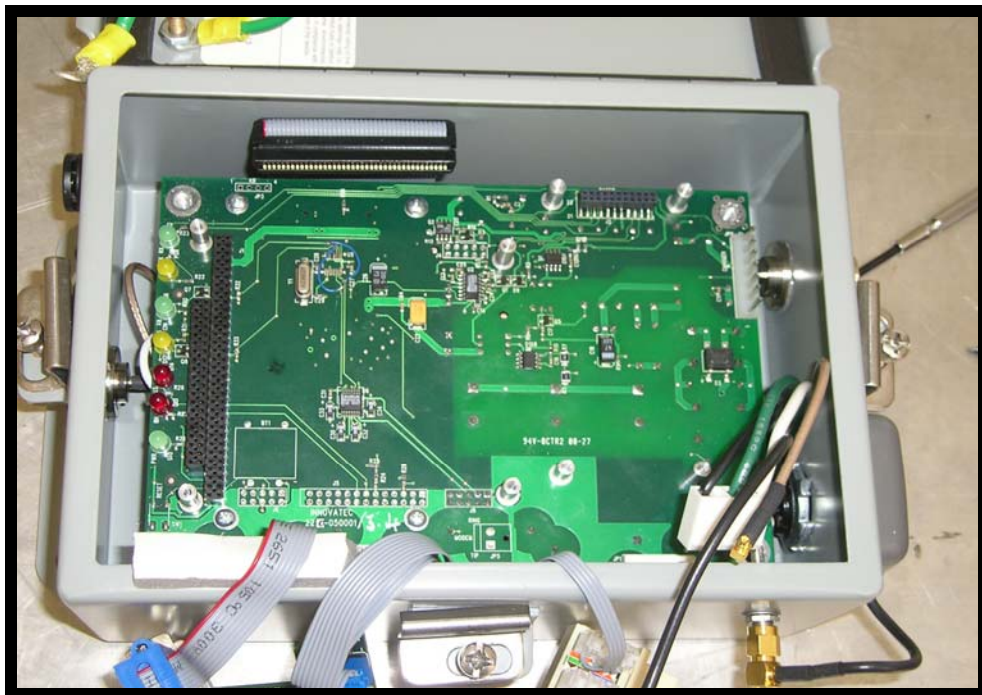


Figure 2: EUT Internal View2



Figure 3: EUT Component View



Figure 4: EUT Solder View



Figure 5: Component View with Shield off (View 1)

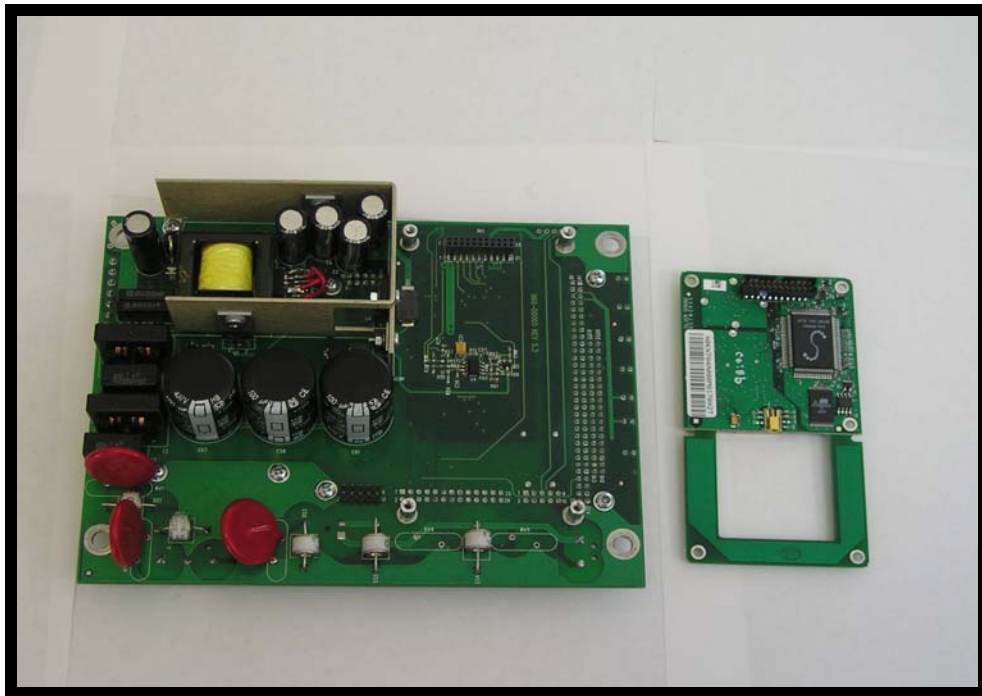


Figure 6: Component View with Shield off (View 2)

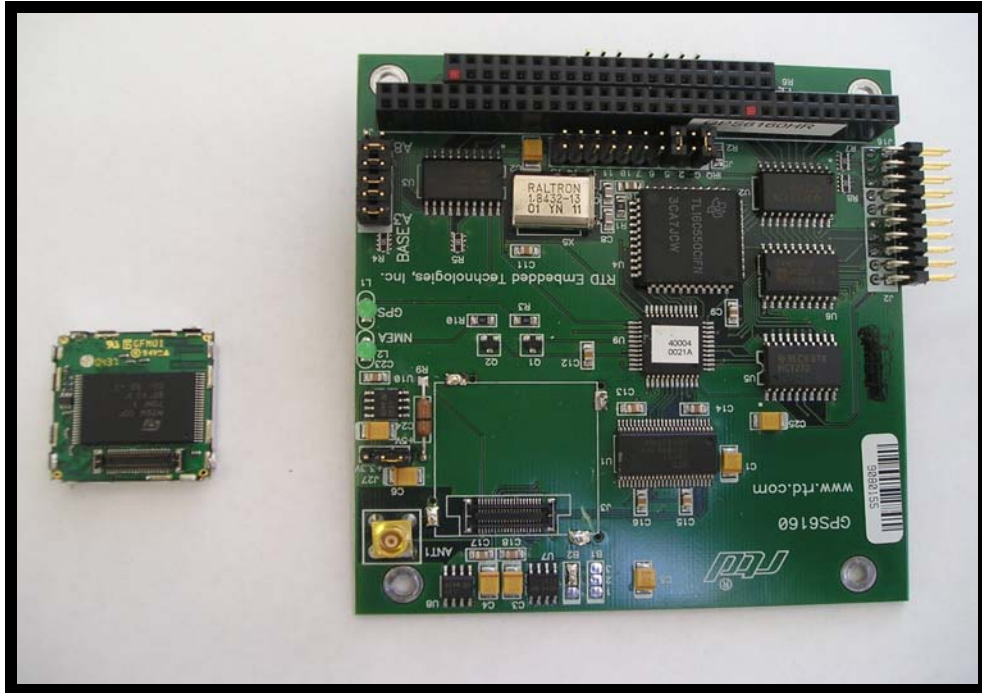


Figure 7: Component View with Shield off (View 3)



Figure 8: Component View with Shield off (View 4)

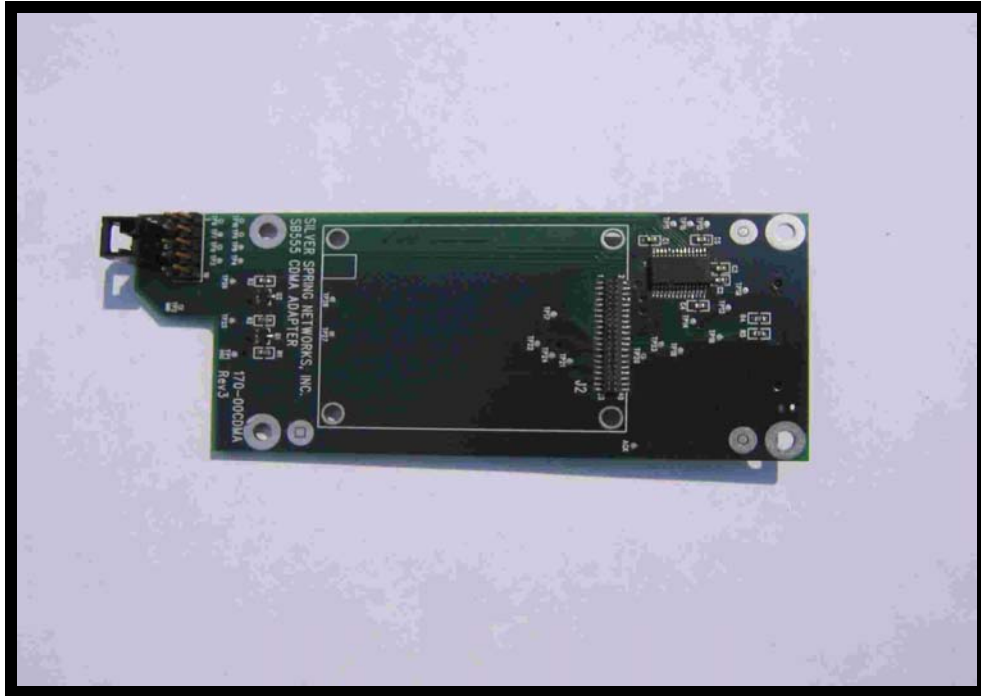


Figure 9: EUT Component View

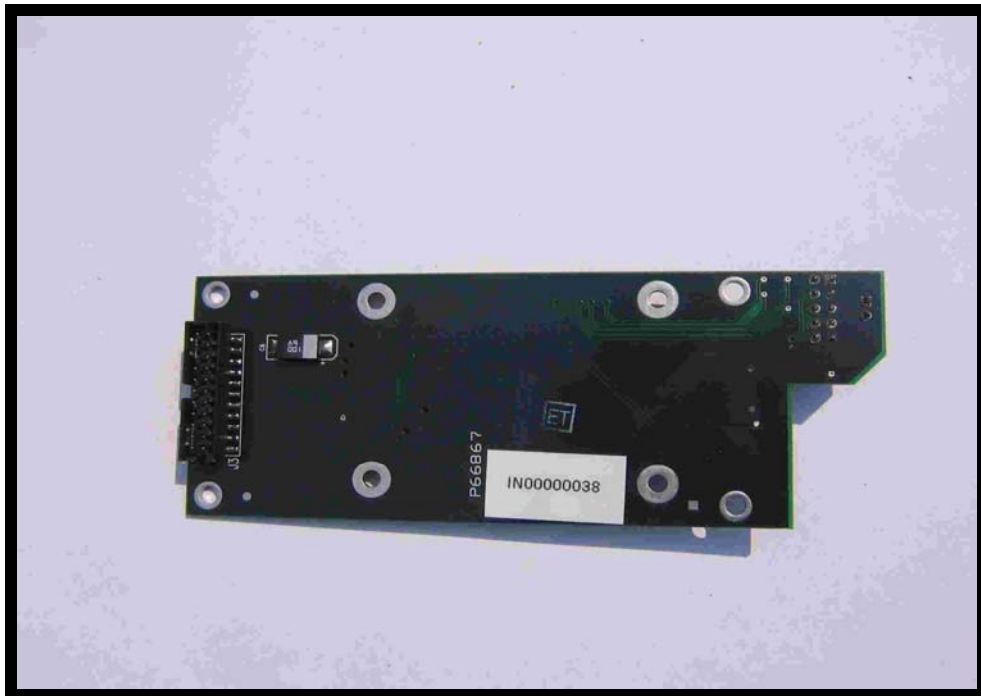


Figure 10: EUT Solder View