

**APPENDIX D – DUT PHOTOS**

Figure D.1 – XL-95P – Front



Figure D.2 – XL-95P – Back



Figure D.3 – XL-95P – Back w/o Battery



Figure D.4 – XL-95P – Left



Figure D.5 – XL-95P – Right



Figure D.6 – XL-95P – Top



Figure D.7 – XL-95P – Bottom



Figure D.8 – P1 – BT-023436-001 Li-Polymer Battery



Figure D.9a – P2 – 14002-0199-01 – AA Alkaline Clam-Shell Battery



Figure D.9b – P2 – 14002-0199-01 – AA Alkaline Clam-Shell Battery



Figure D.10 – P3 – 14002-0214-01 – Li-Ion Battery



Figure D.11– P4 – 14002-0214-02 – Li-Ion Battery



Figure D.12– T1 – KRE1011506/1 Antenna

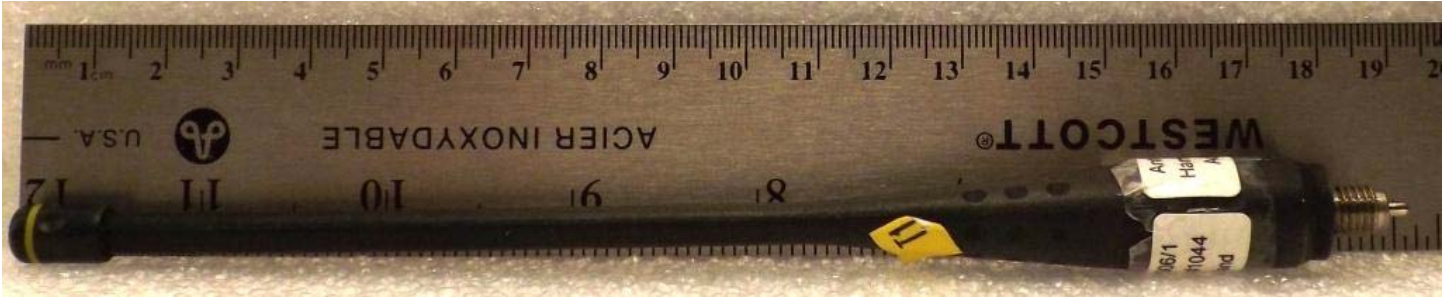


Figure D.13– T4 – KRE1011506/2 Antenna



Figure D.14– T4 – 14002-0223-01 Antenna



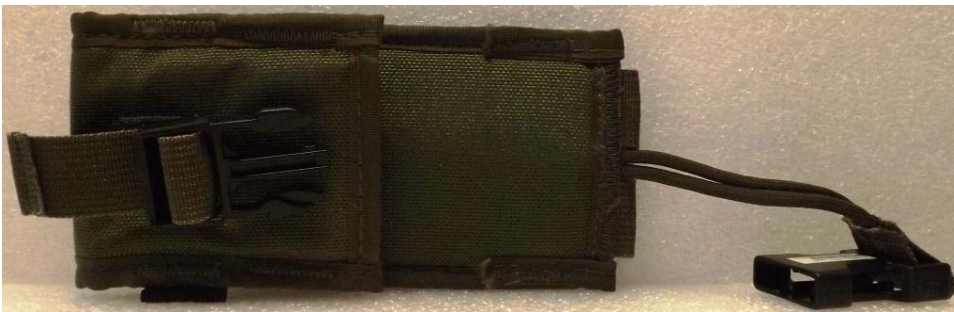
**Figure D.15a– B2 - CC23894 Belt Clip**



**Figure D.15b– B2 - CC23894 Belt Clip**



**Figure D.16a– B13 – 14002-0217-01 Nylon Case**



**Figure D.16b– B13 – 14002-0217-01 Nylon Case**



**Figure D.17a– B15 – 14002-0012-01 Black Nylon Case w/ Belt Loop Kit**



**Figure D.17b– B15 – 14002-0012-01 Black Nylon Case w/ Belt Loop Kit**





Figure D.18a– A50 – MC-011617-730 Speaker MIC w/ Antenna Port



Figure D.18b– A50 – MC-011617-730 Speaker MIC w/ Antenna Port



Figure D.19a– A51 – MC-011617-703 Speaker MIC w/ Antenna Port



Figure D.19b– A51 – MC-011617-703 Speaker MIC w/ Antenna Port



Figure D.20a– A52 – MC-011617-718 Speaker MIC w/ Antenna Port



Figure D.20b– A52 – MC-011617-718 Speaker MIC w/ Antenna Port



Figure D.21a– A54 – MC-011617-602 Speaker MIC w/ Antenna Port



Figure D.21b– A54 – MC-011617-602 Speaker MIC w/ Antenna Port



Figure D.22– A53 – MC-011617-606 Speaker MIC

