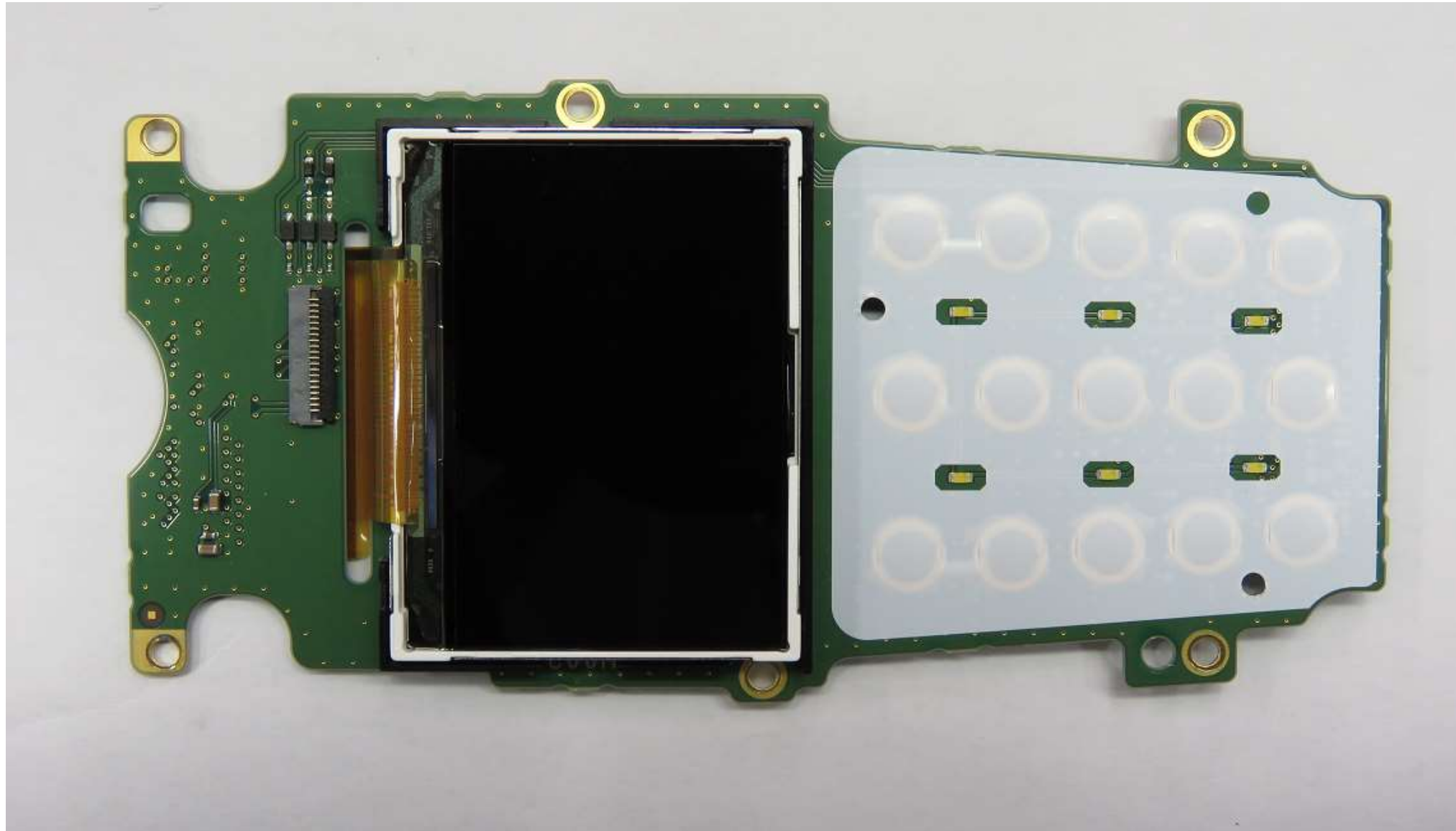


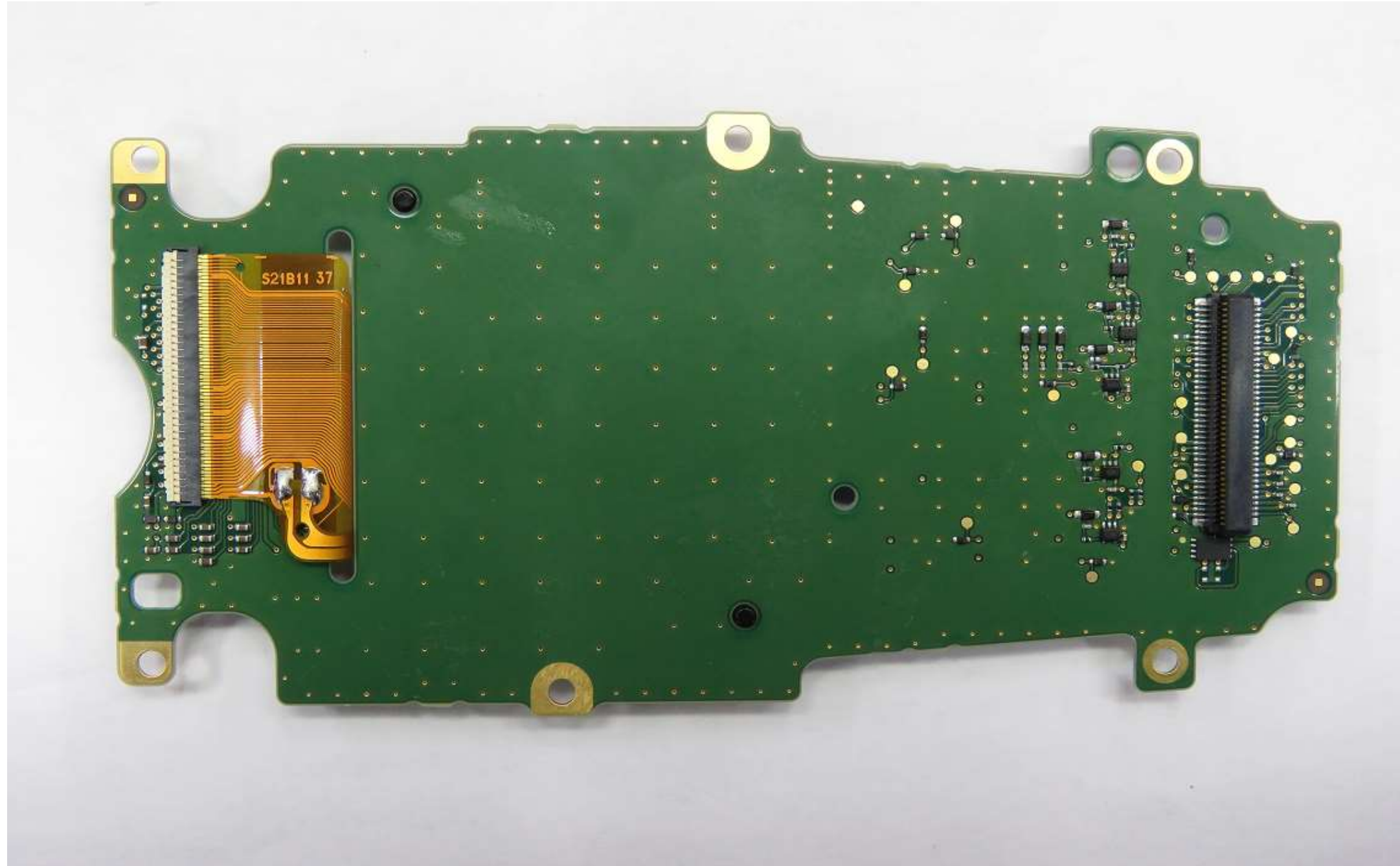
XLP-A0166_XL-95P 7_800MHz internal high resolution photos



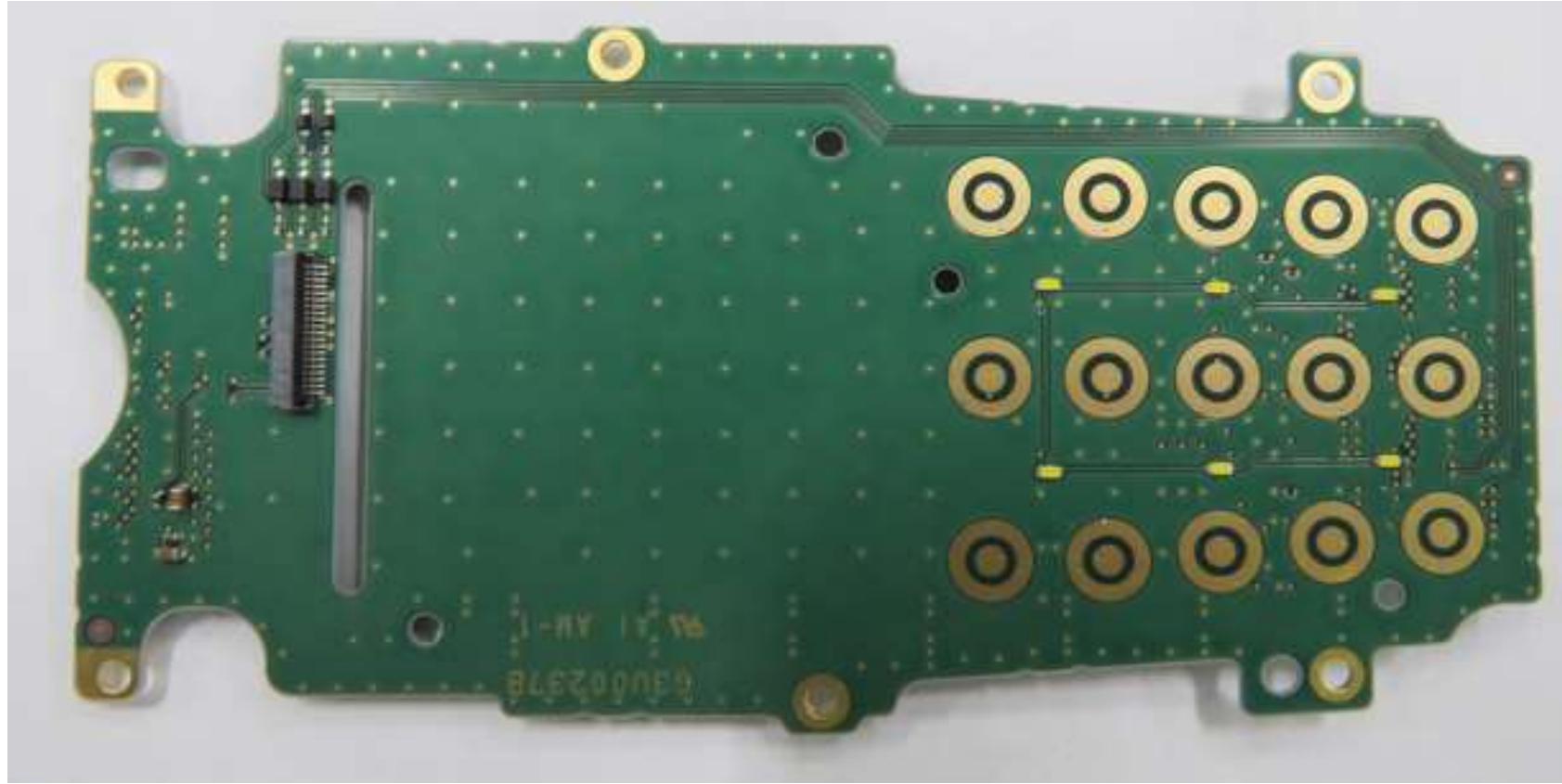
showing IF board and display when front cover is off



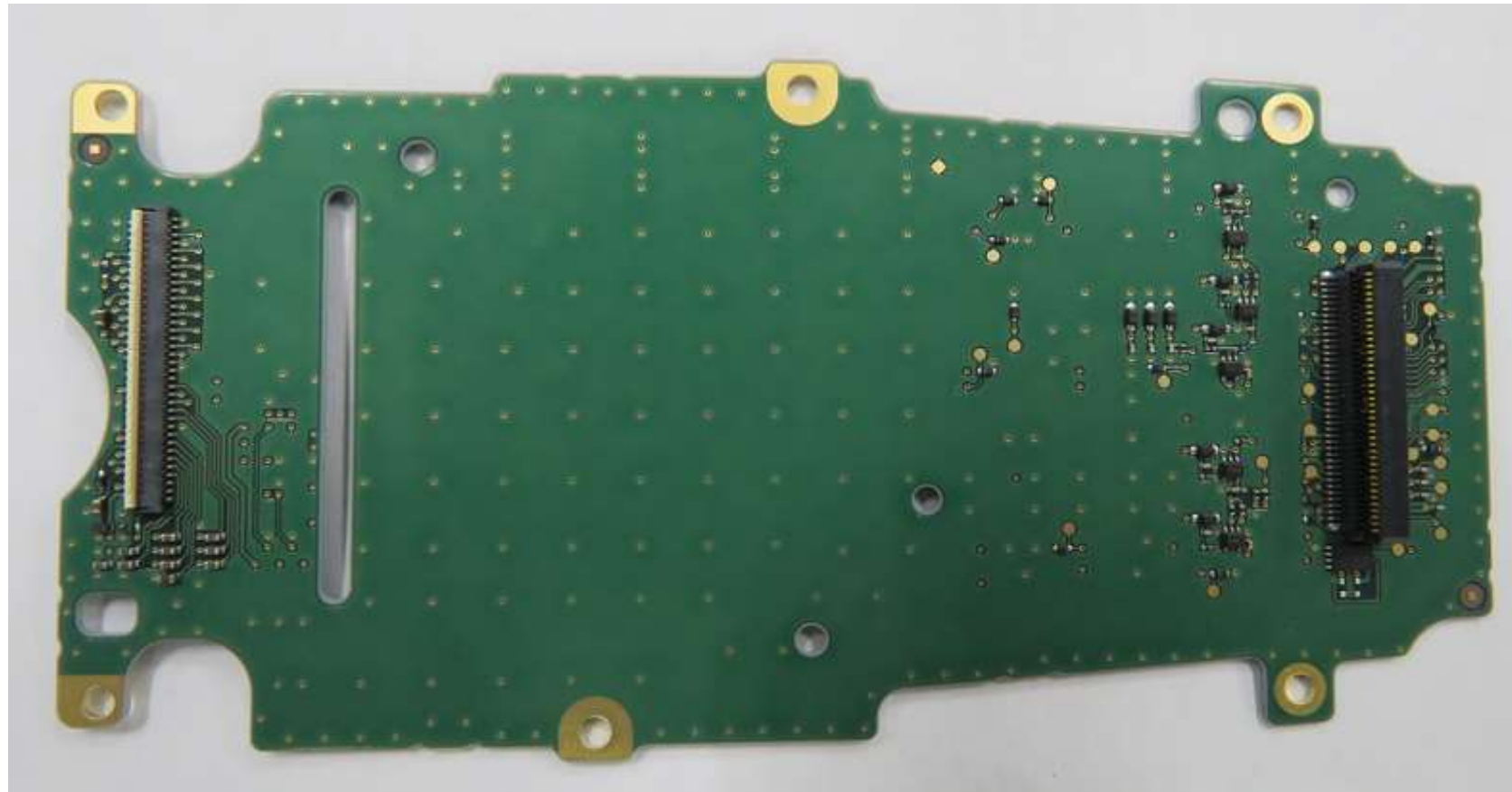
Front side of IF board and display



Back side of IF board



Front side of IF board when keypad and display is taken off



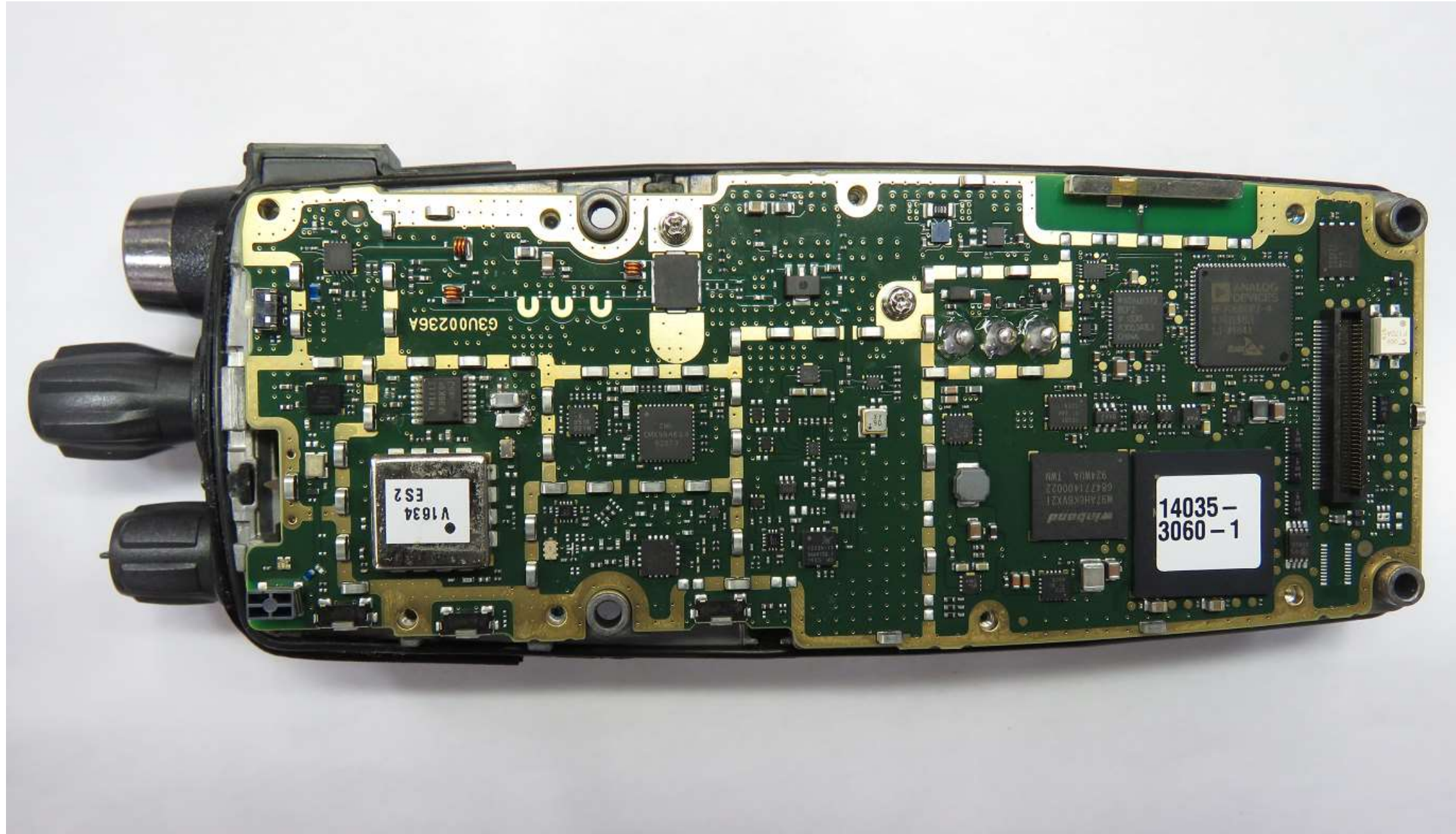
Back side of IF board



Top RF shield

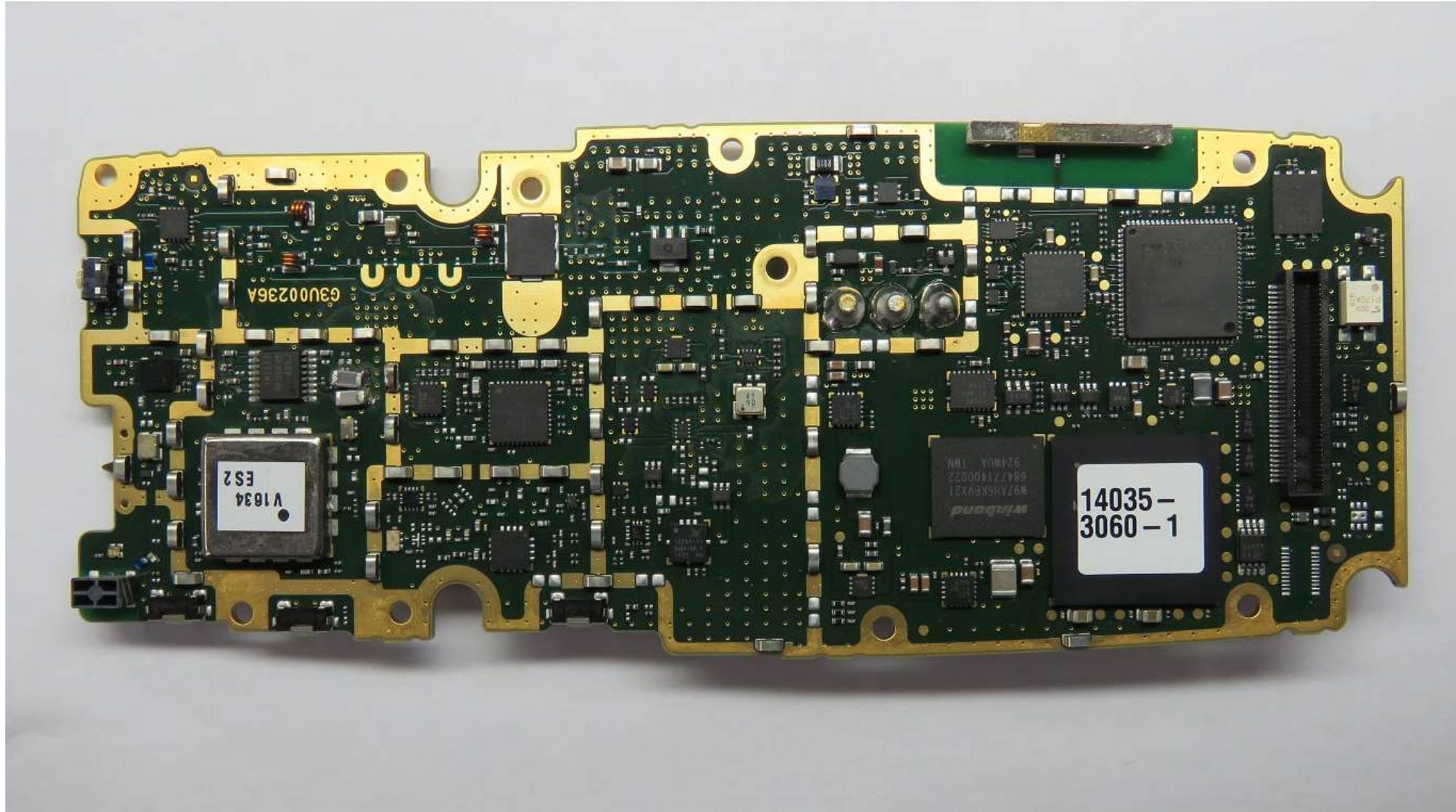


Bottom RF shield



Bottom side of main board on the chassis

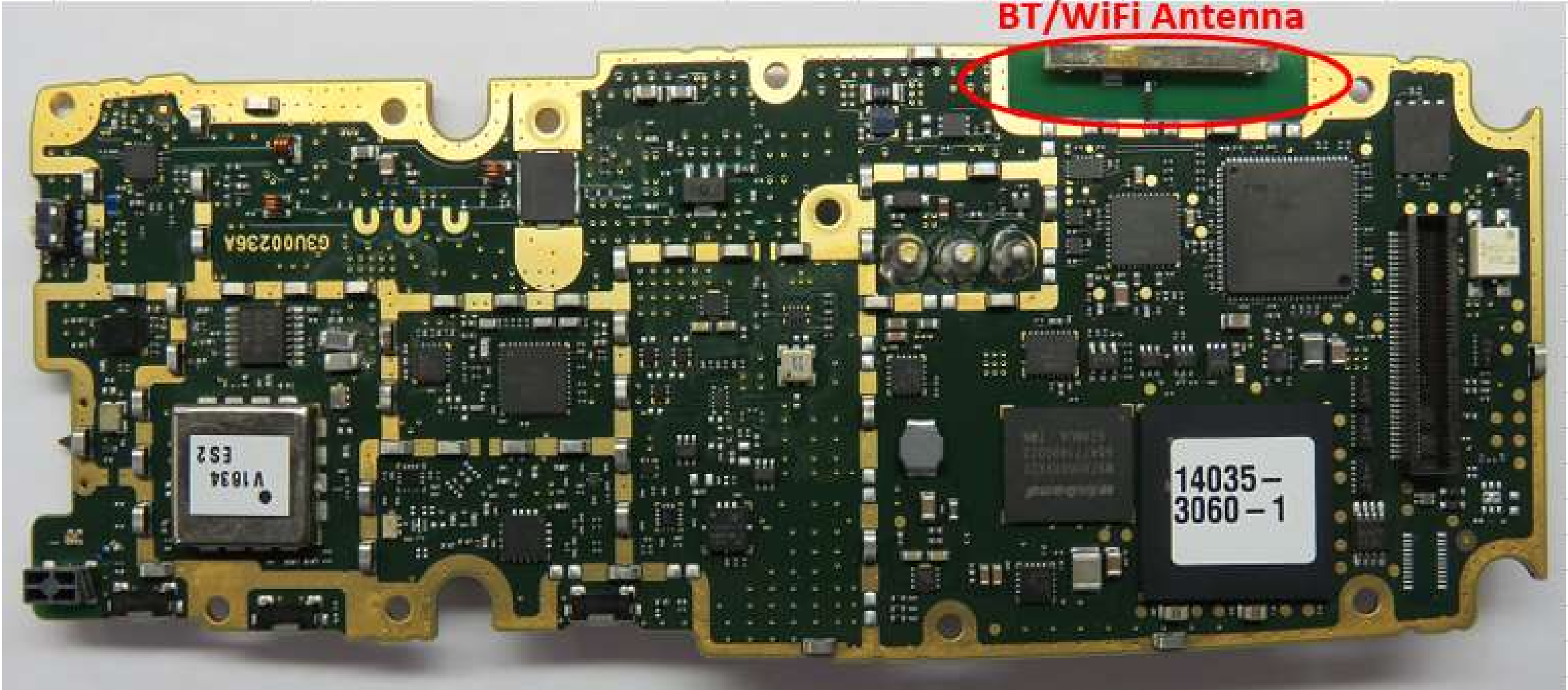
main board bottom



BT/WiFi Antenna

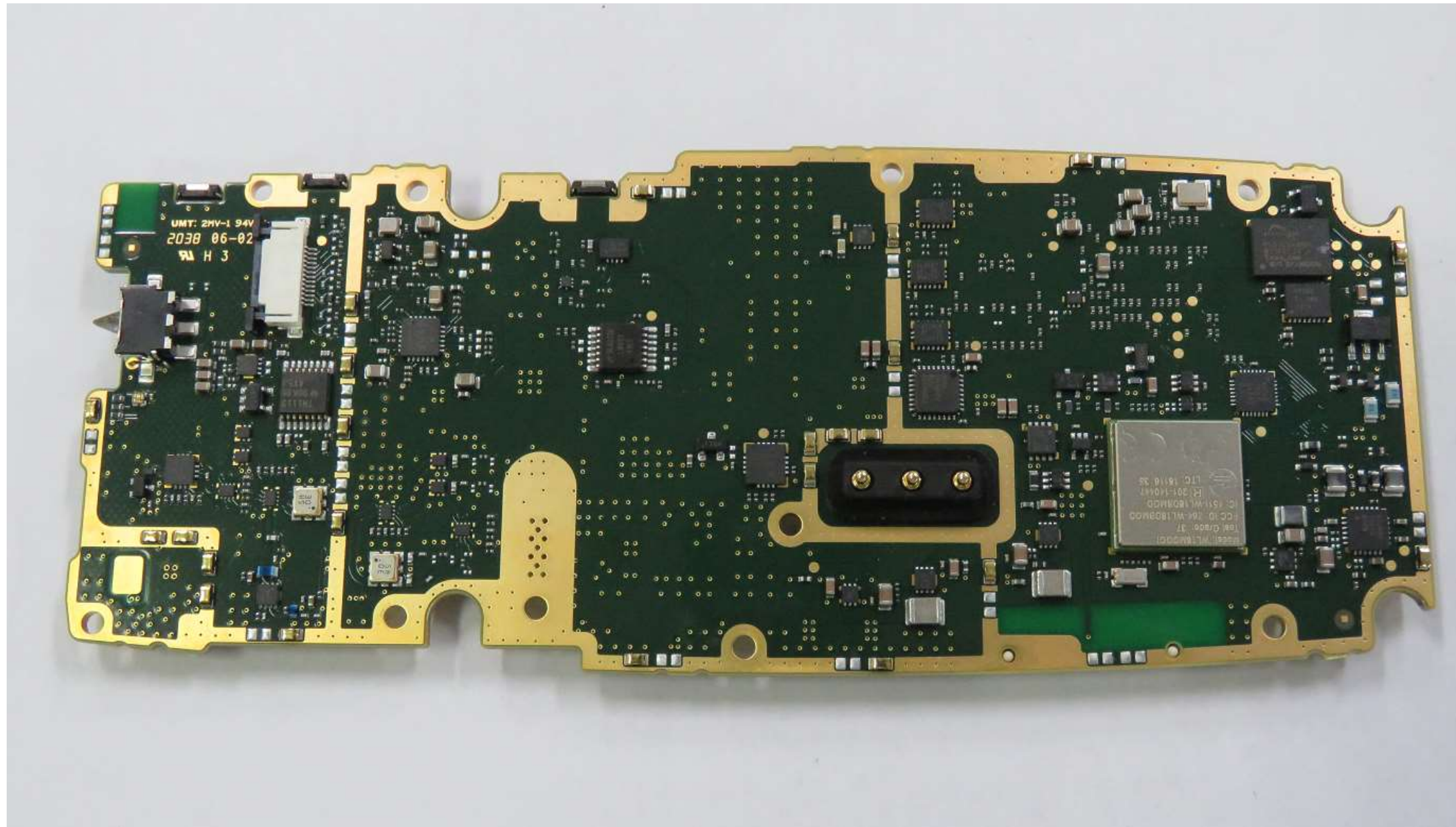


Main board showing BT/WiFi antenna locations

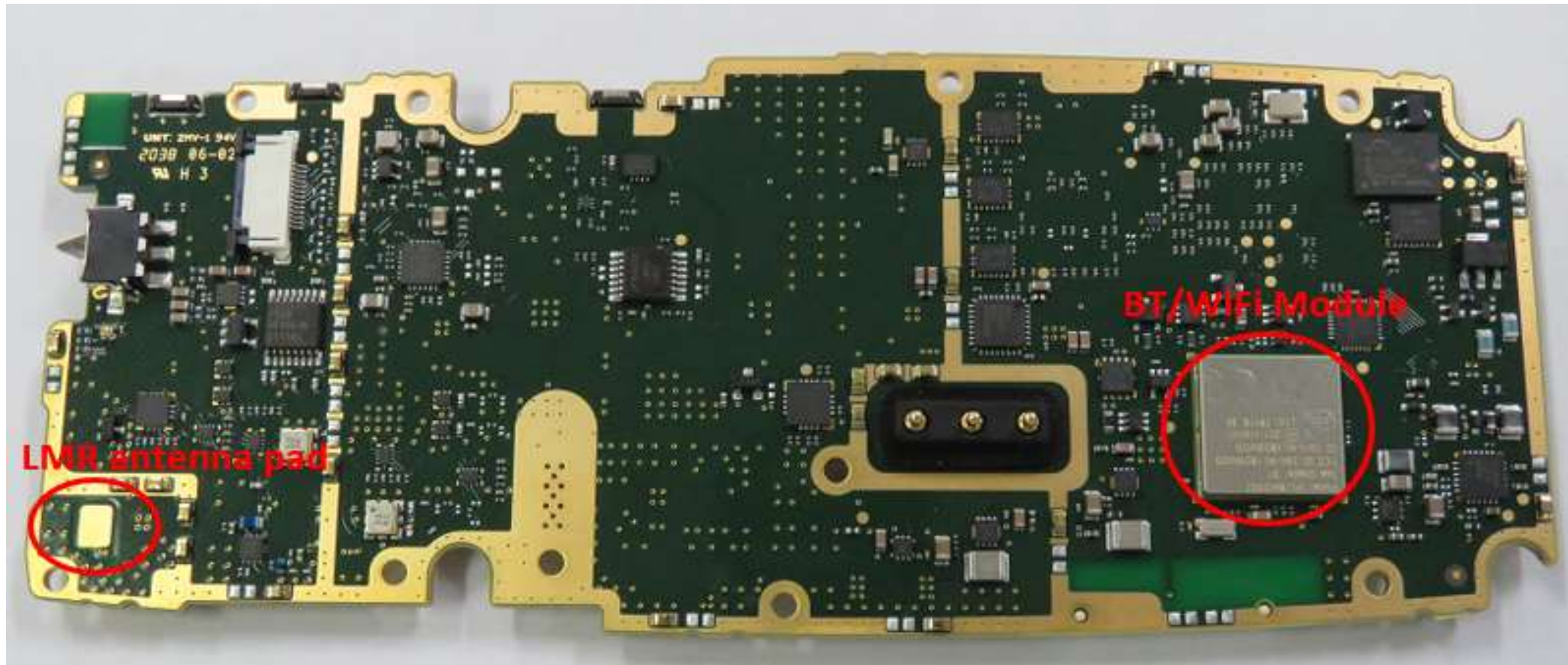


BT/WiFi Antenna: 14035-4080-01(AVX)

WiFi Band	2400-2490MHz
Average Efficiency	22%
Average Peak Gain	-1.5dBi



Top side of the main board



showing LMR antenna pad and BT/WiFi module

