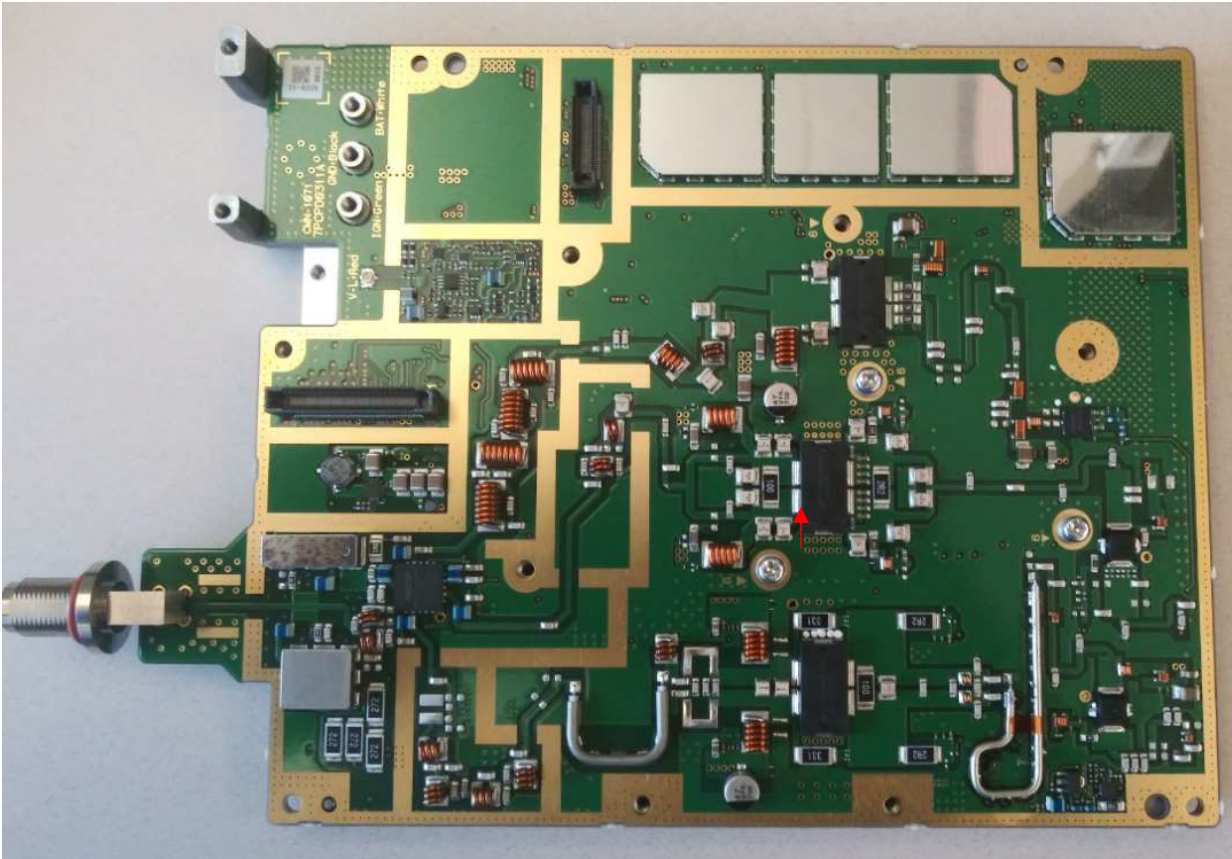
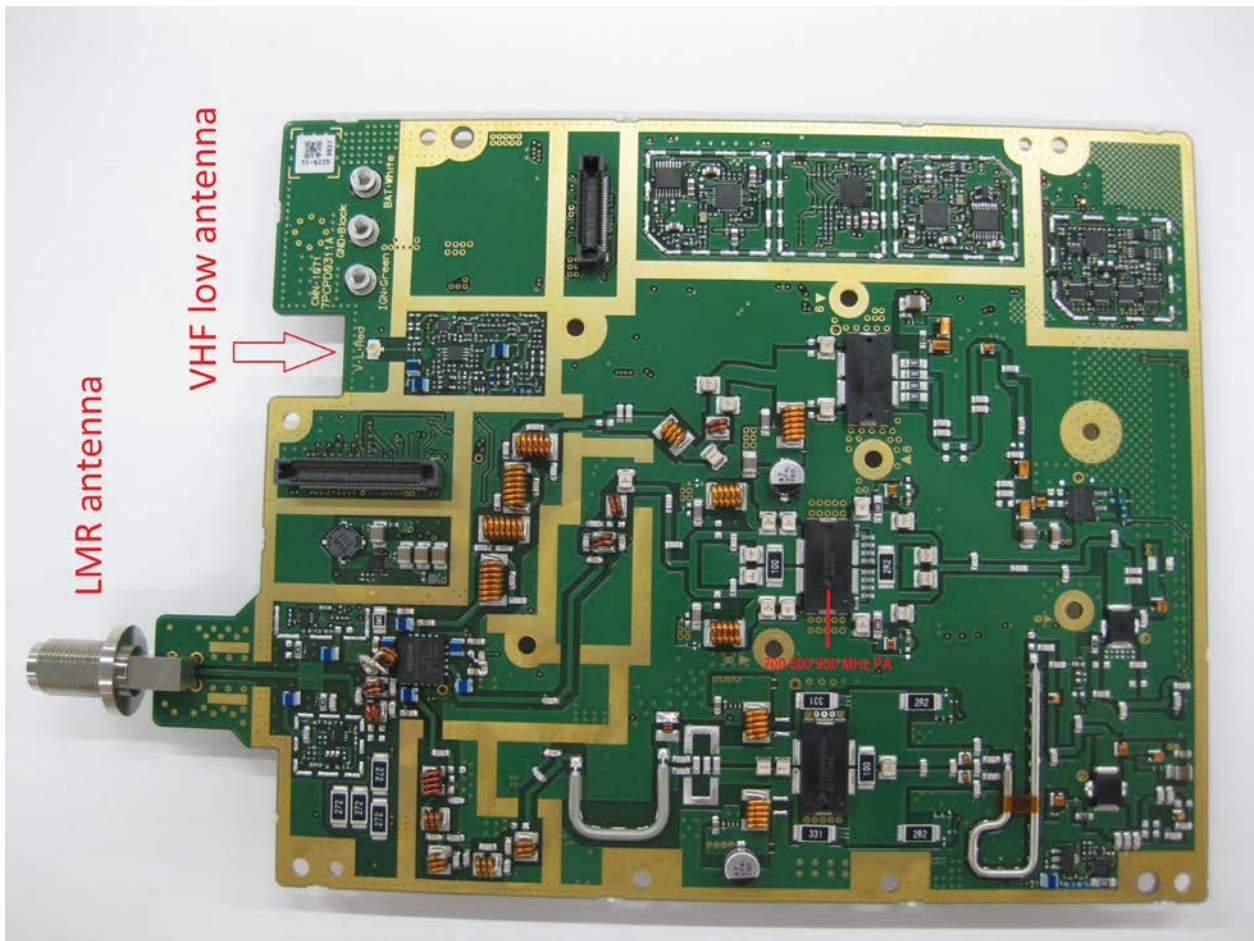


VCH



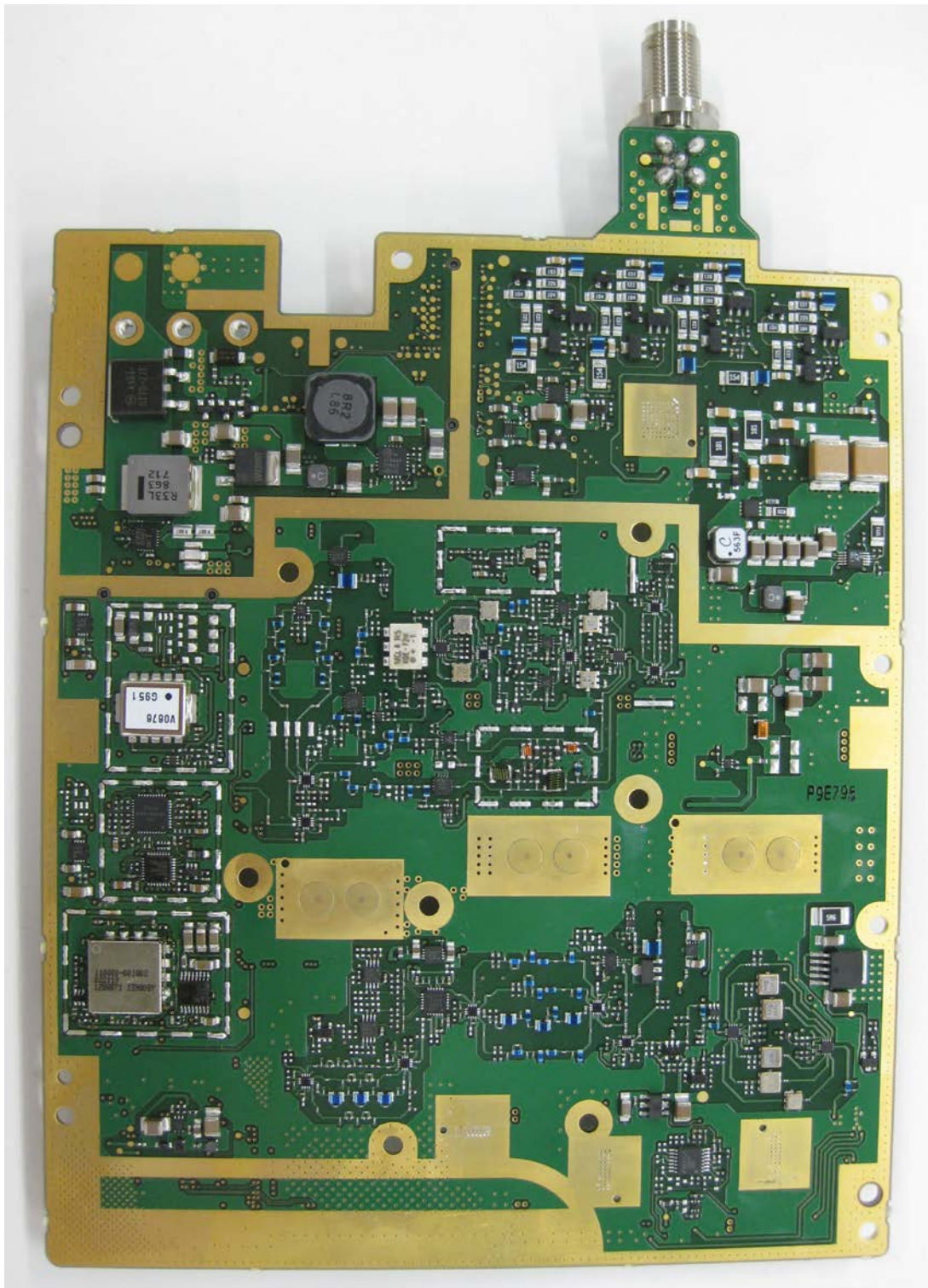
VCH RF Board Component Side with Shields and 700/800/900 MHz Transmitter Location Indicated



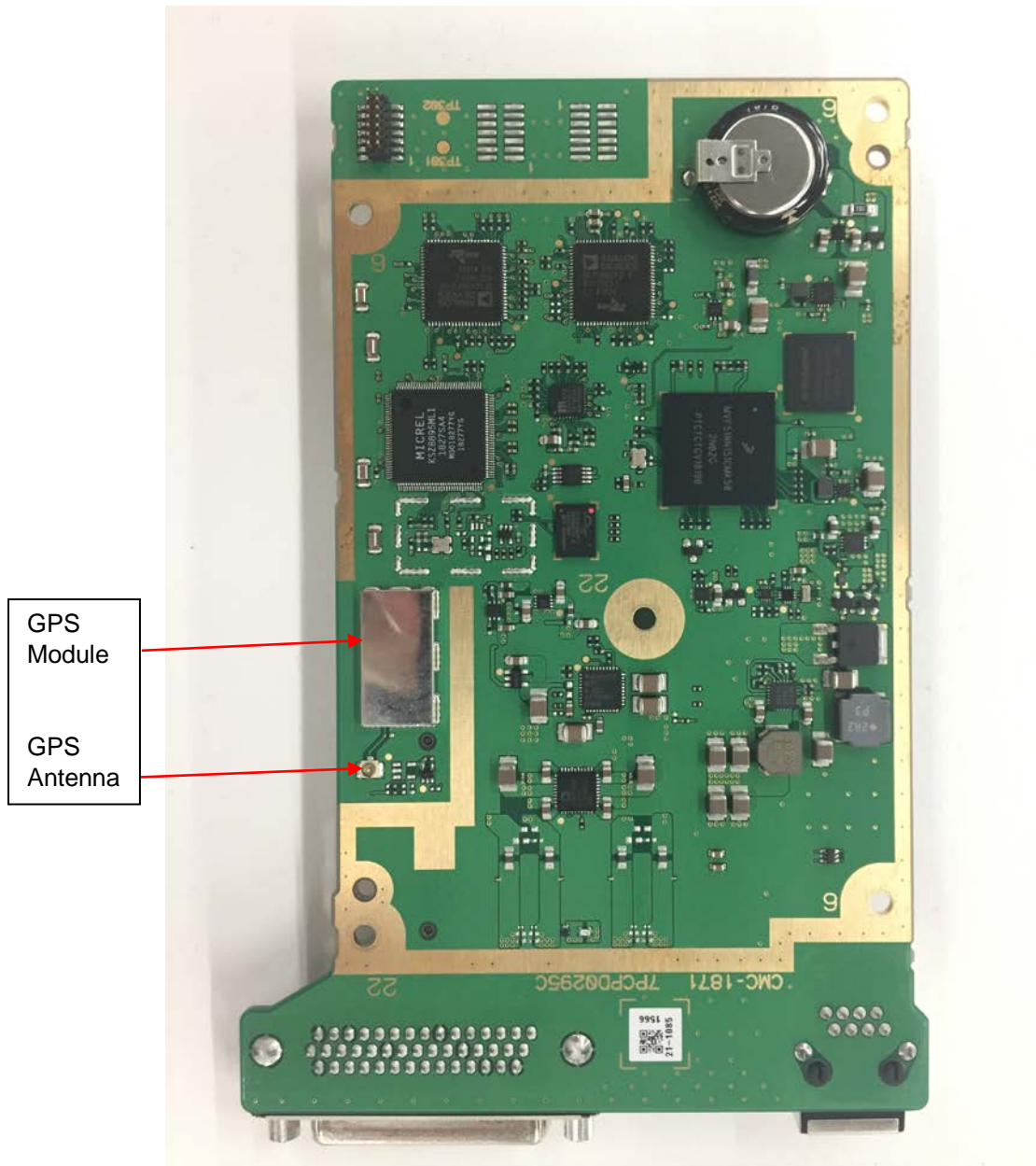
VCH RF Board Component Side without Shields and Transmitter Location Indicated



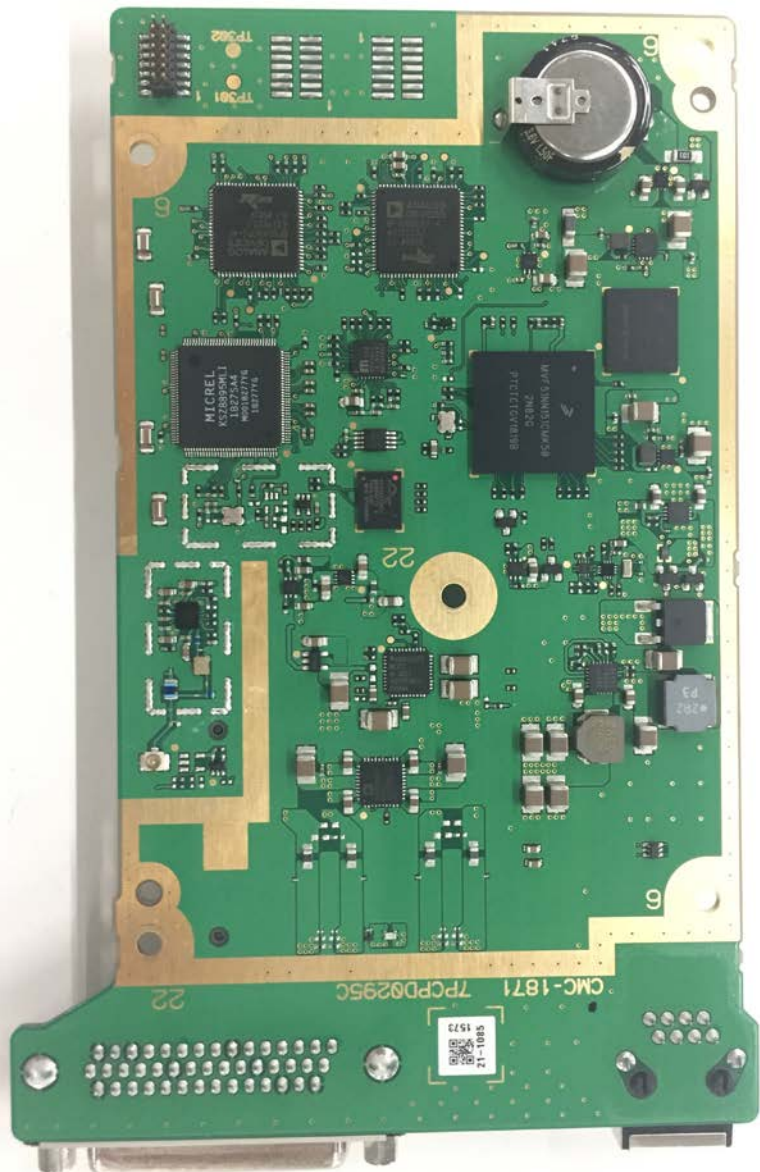
VCH RF Board Solder Side with Shields



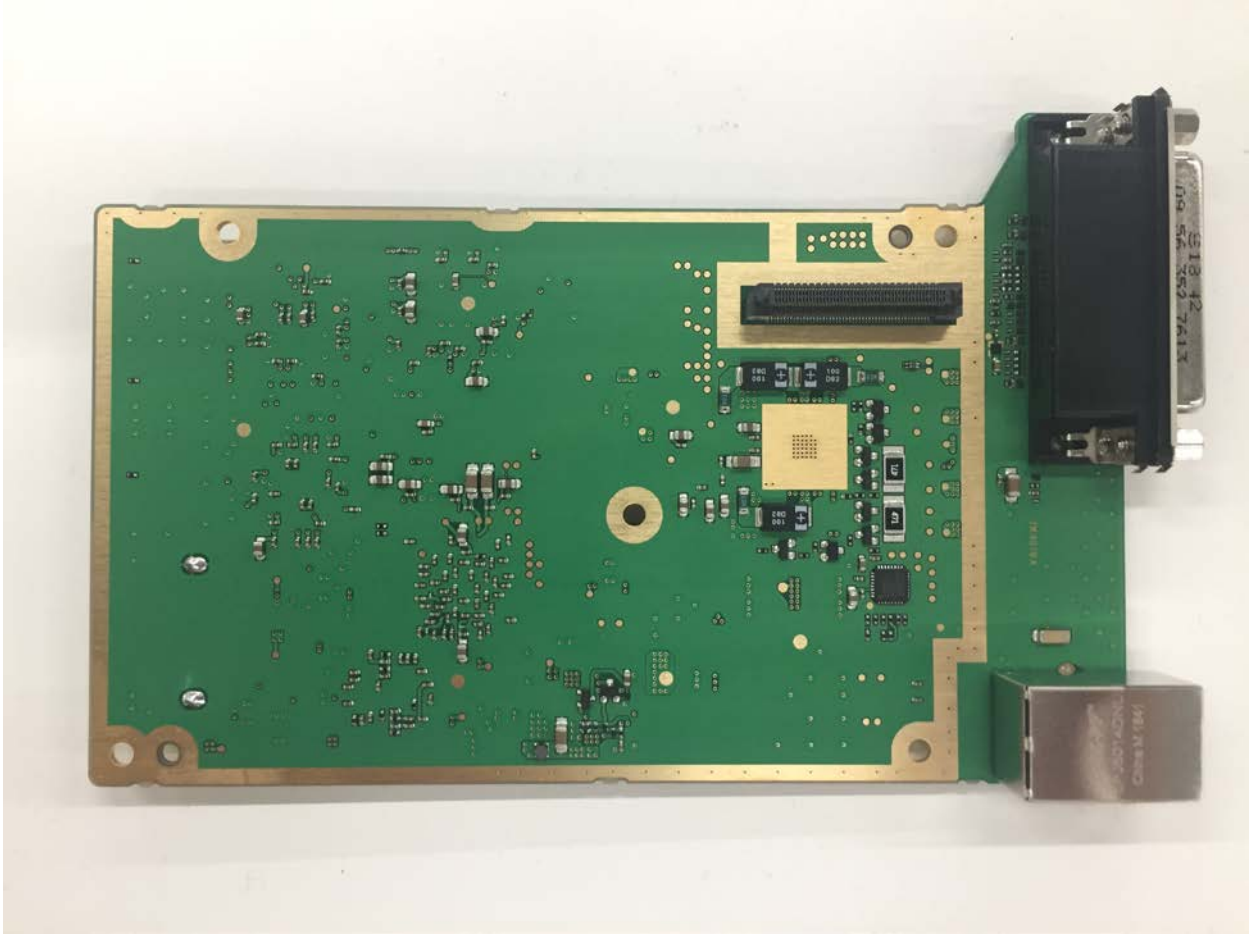
VCH RF Board Solder Side without Shields



**VCH Logic Board Component Side with Shields, GPS Module and Antenna Indicated**



VCH Logic Board Component Side without Shields



VCH Logic Board Solder Side

CH



Connector Board Front and Back Views





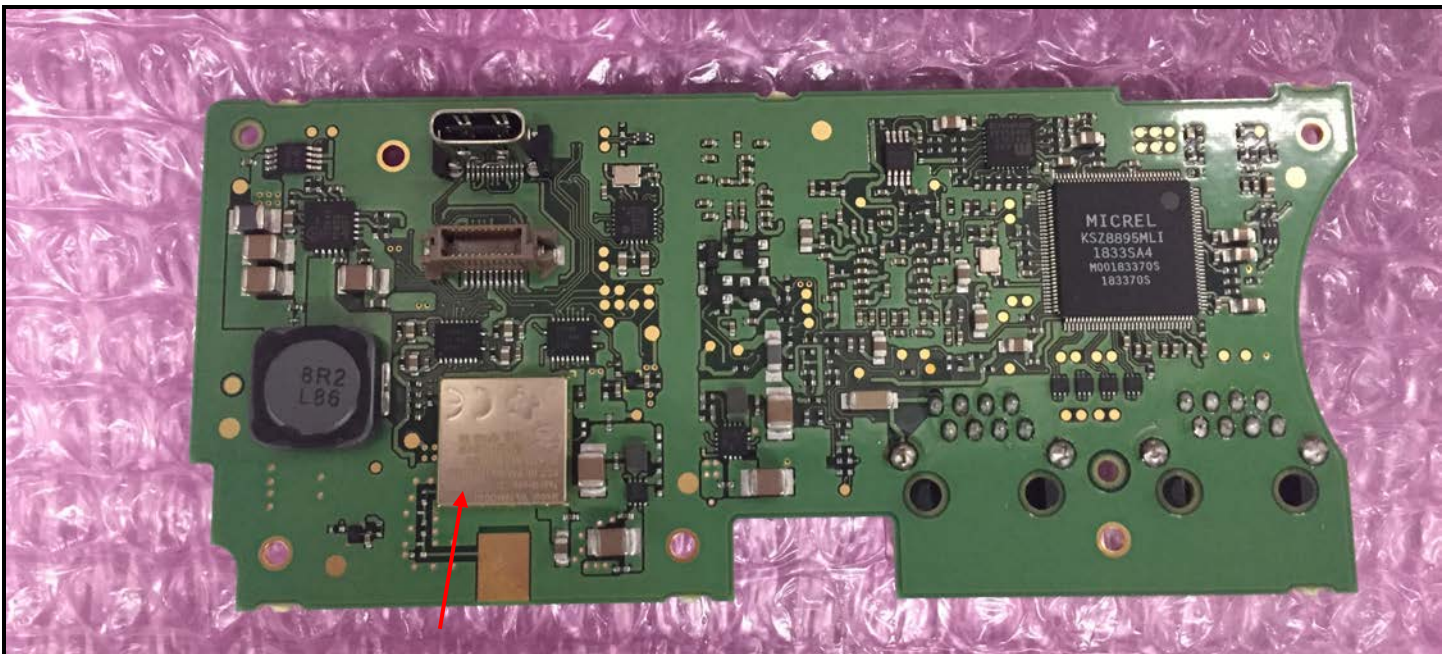
Connector Board Back View with Heatsink



Keypad Board Front and Back Views



Main Board Front View



Main Board Back View 2 with BT/Wi-Fi Module Location Indicated

WiFi and BT antennas are located on Control head shown below

- a) External side of the front plastic housing picture showing BT/WiFi antenna's location



- b) Inner side of the front plastic housing picture showing BT/WiFi antenna's location



c) Place on the PCB showing where/how it contacts the antenna on the front plastic housing

