



Figure 1 - SitePro External View



Figure 2 - SitePro Controller Cover



Figure 3 - SitePro Modem/FTMIC Cover

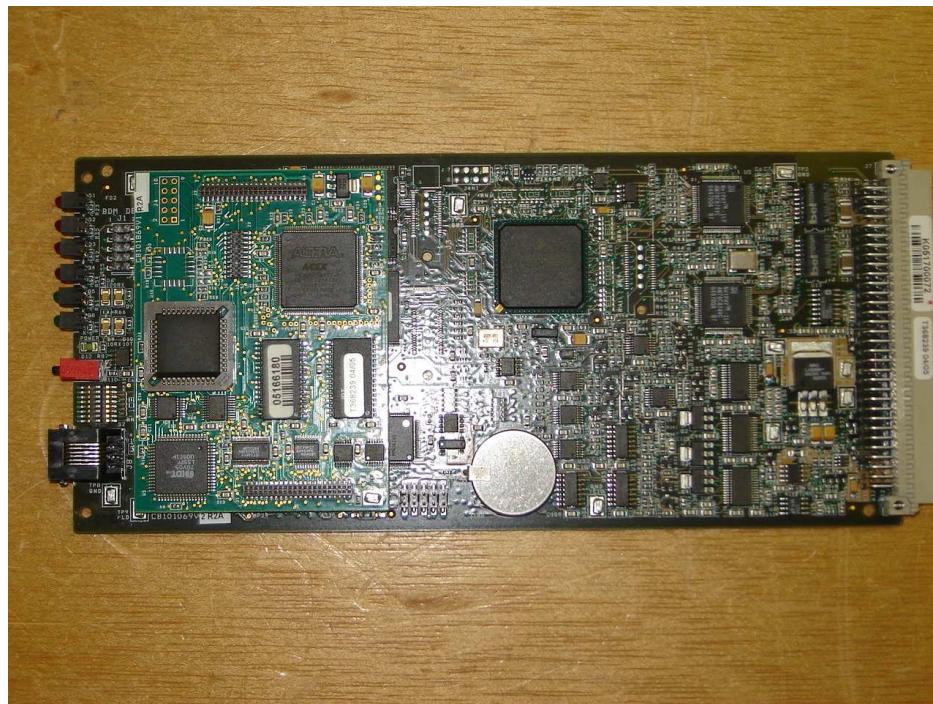


Figure 4 - SitePro Controller Card - Top View



Figure 5 - SitePro Controller Card - Bottom View

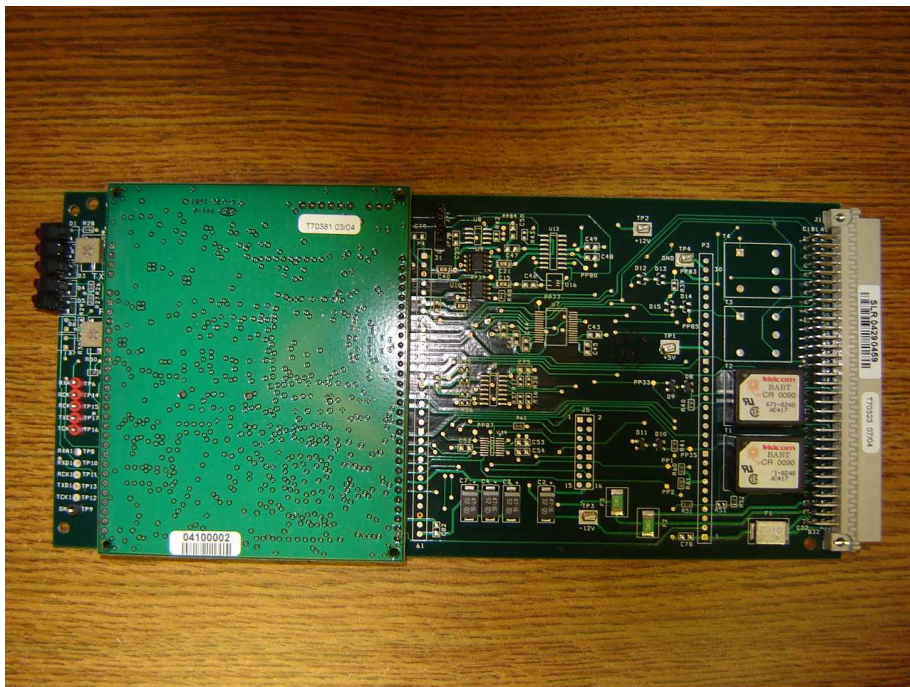


Figure 6 - SitePro Modem Card - Top View

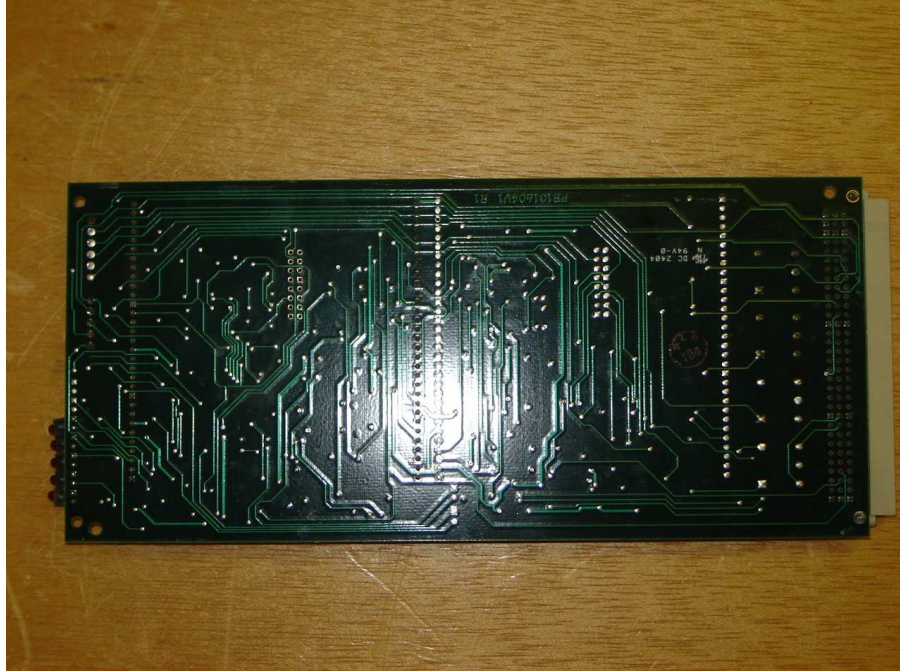


Figure 7 - SitePro Modem Card - Bottom View



Figure 5 - System Module Overall



Figure 6 - System Module, cover removed



Figure 7 - System Module, main board top



Figure 8 - System Module, main board bottom



Figure 9 - System Module - DSP Board top



Figure 10 - System Module - DSP Board bottom

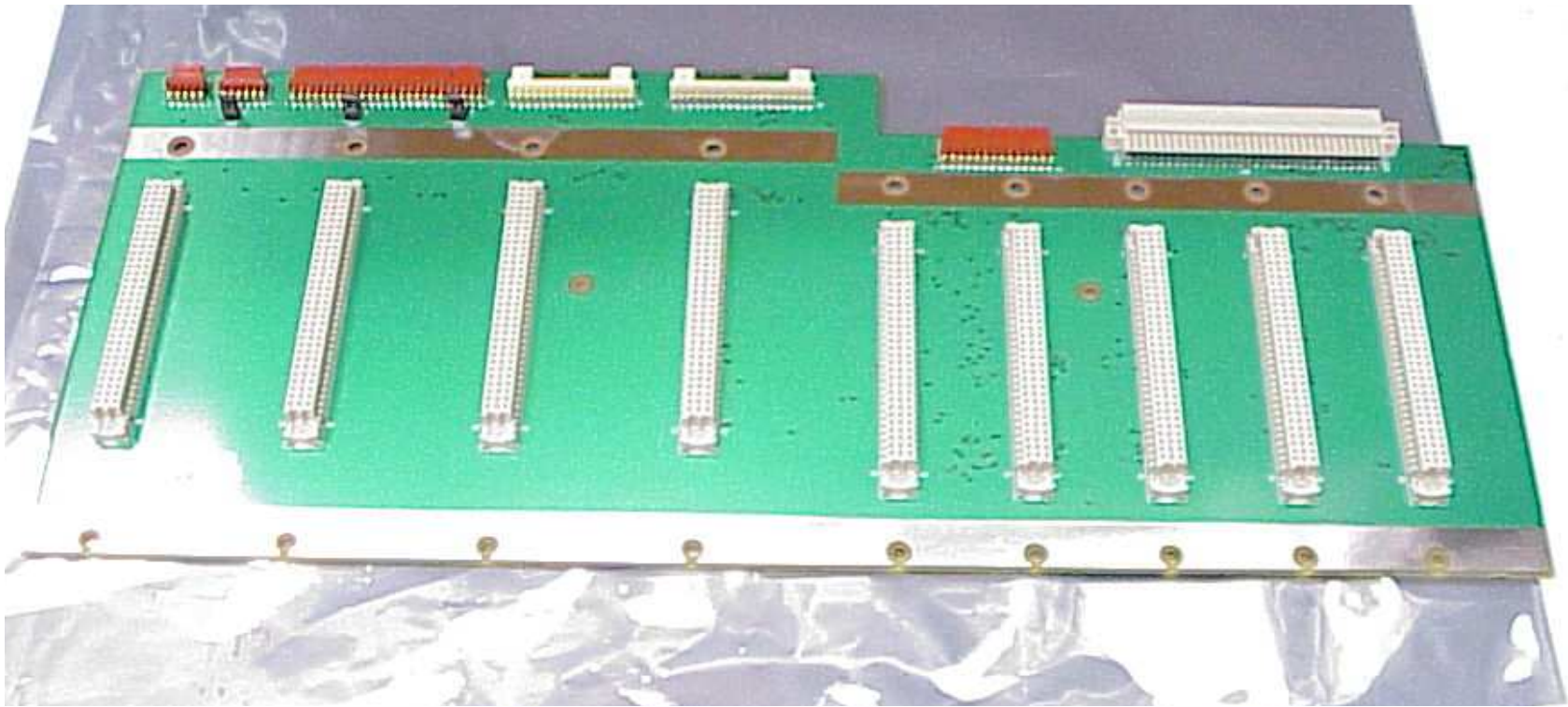


Figure 1 - Backplane Top

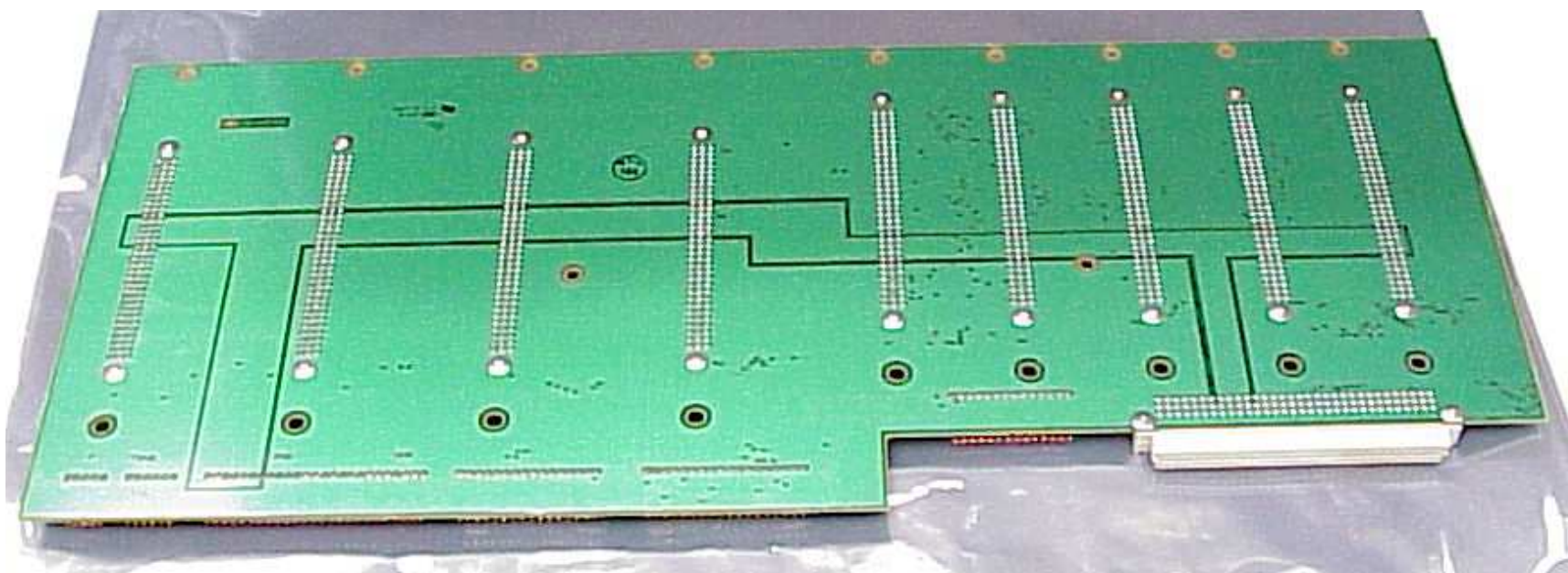


Figure 2 - Backplane Board Bottom

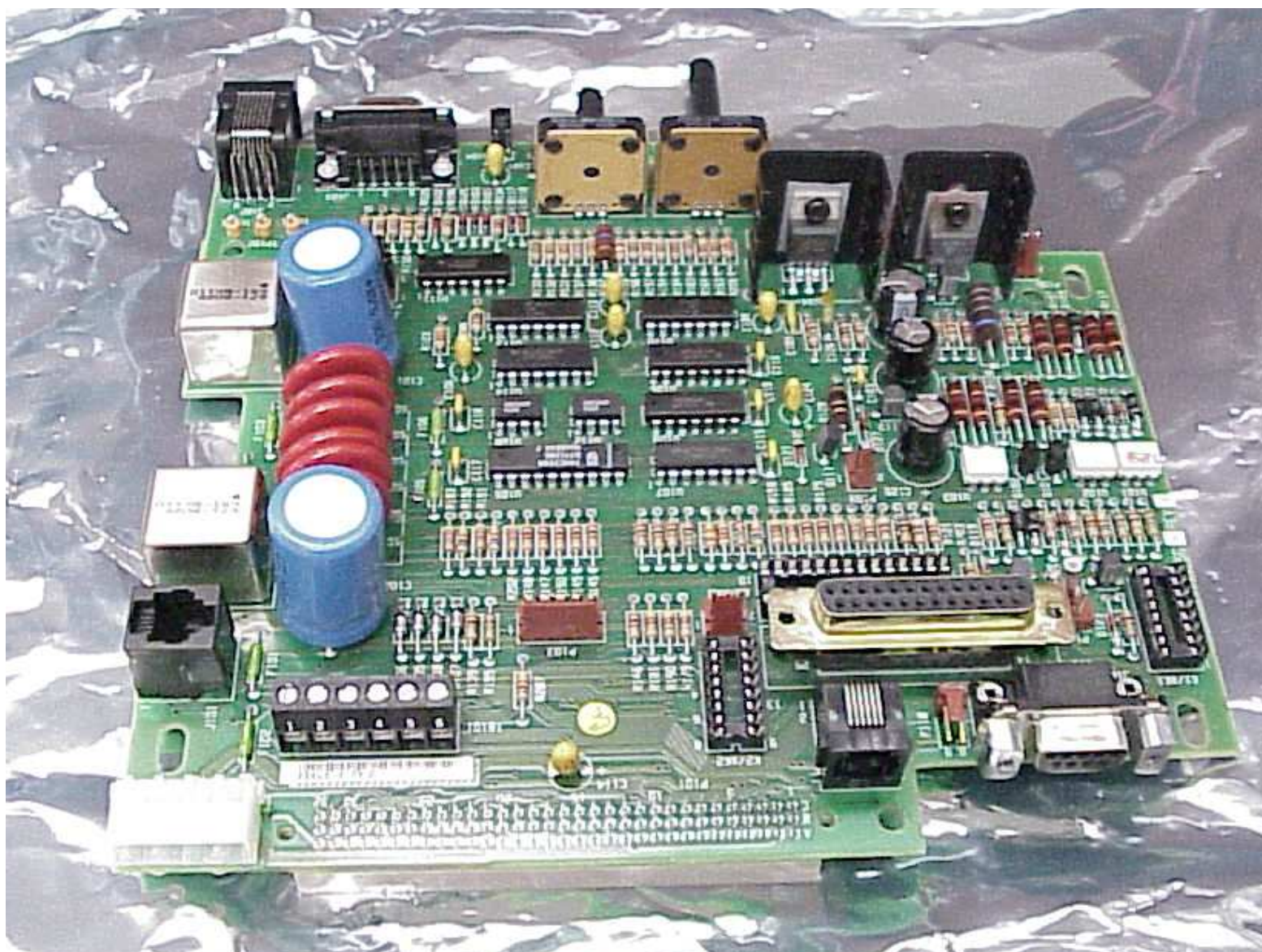


Figure 3 - Interface Board Top



Figure 4 - Interface Board Bottom

Figure 5: Low frequency split Tx Synthesizer Front View Cover On



Figure 6: Low frequency split Tx Synthesizer Front View Cover Off

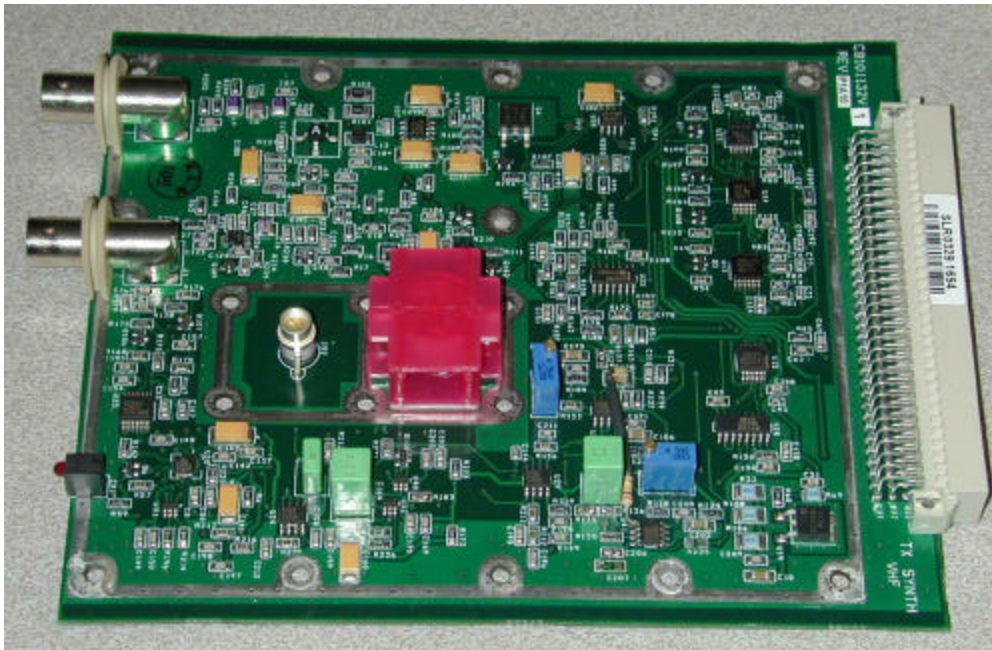


Figure 7: Low frequency split Tx Synthesizer Back View Cover On



Figure 8: Low frequency split Tx Synthesizer Back View Cover Off

