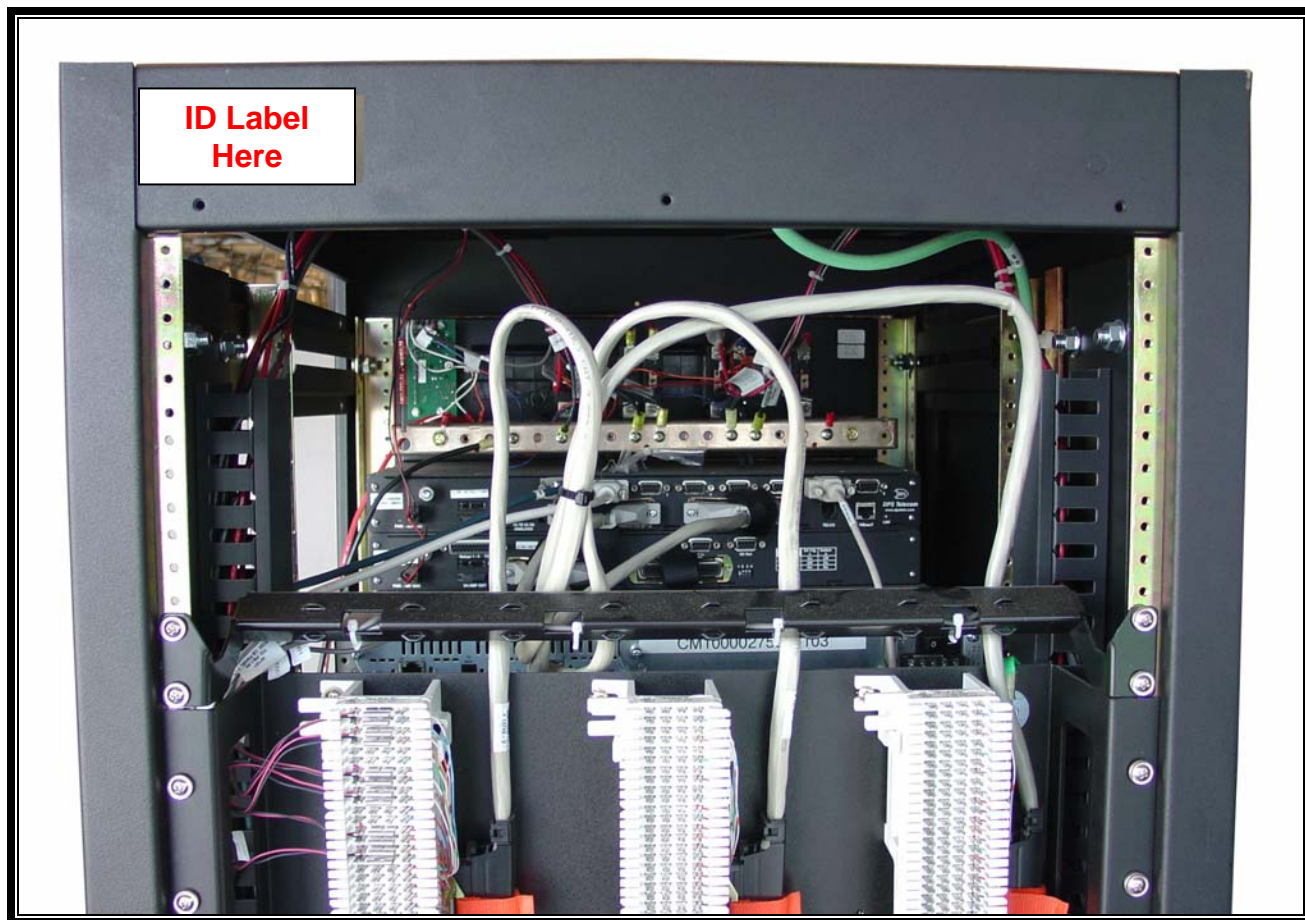


Appendix J: Label & Location



Photograph 1: ID Label Location

Note - Label is mounted on outside surface of side, visible when flush-mounted back cover is attached)

Please see the following page for an ID label sample.

M/A — COM, Inc

MODL: xxxx

SER#: 9866219



DEVICE COMPLIES WITH FCC RULE
PART 15. OPERATION IS SUBJECT
TO THE CONDITION THAT THIS
DEVICE DOES NOT CAUSE HARMFUL INTERFERENCE

FCC ID: OWDTR-0048-E

INPUT:

IC: 3636B-0048

TR — 0048

Single Phase

03385

MADE IN LYNCHBURG, VA. USA