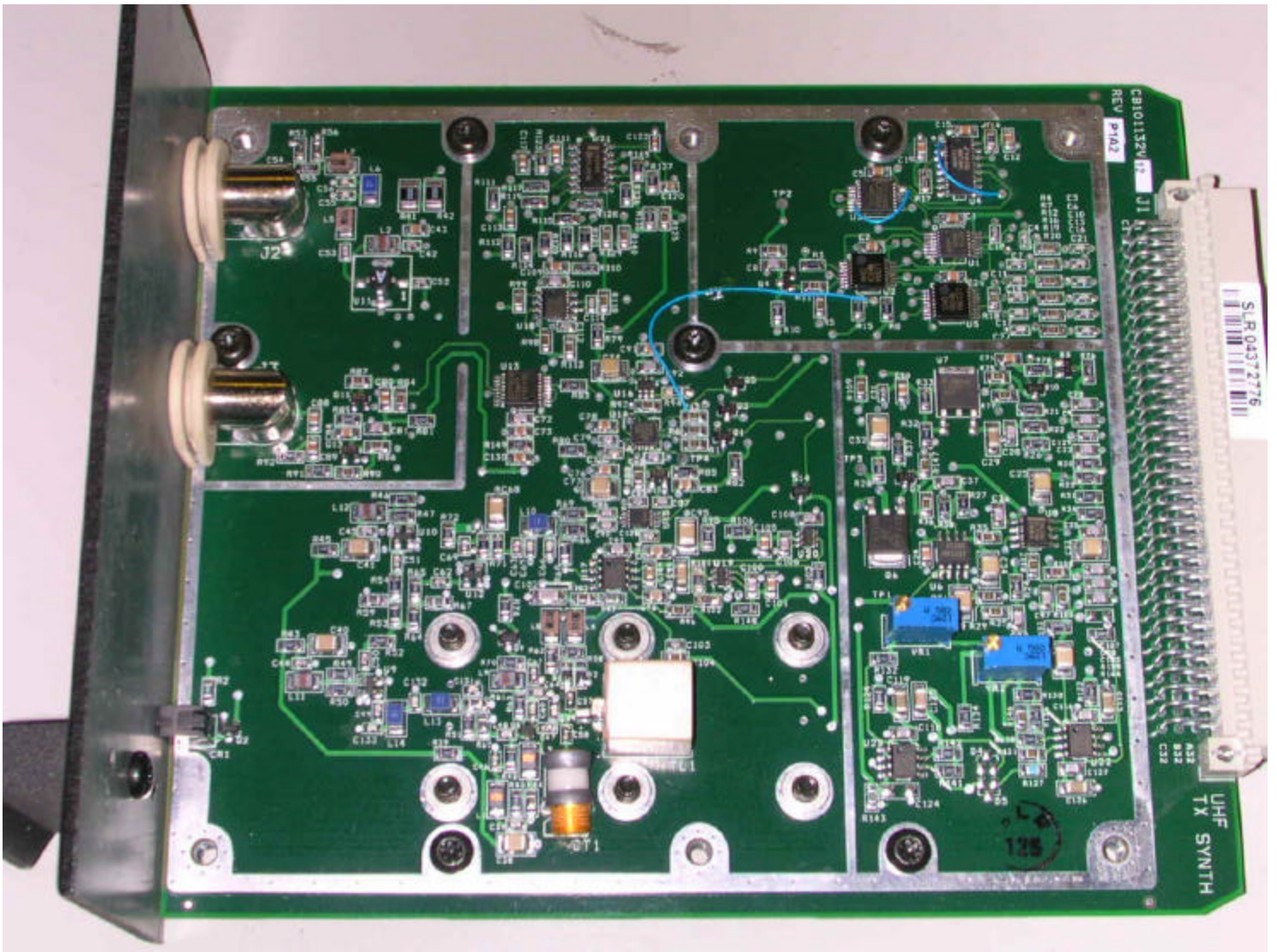
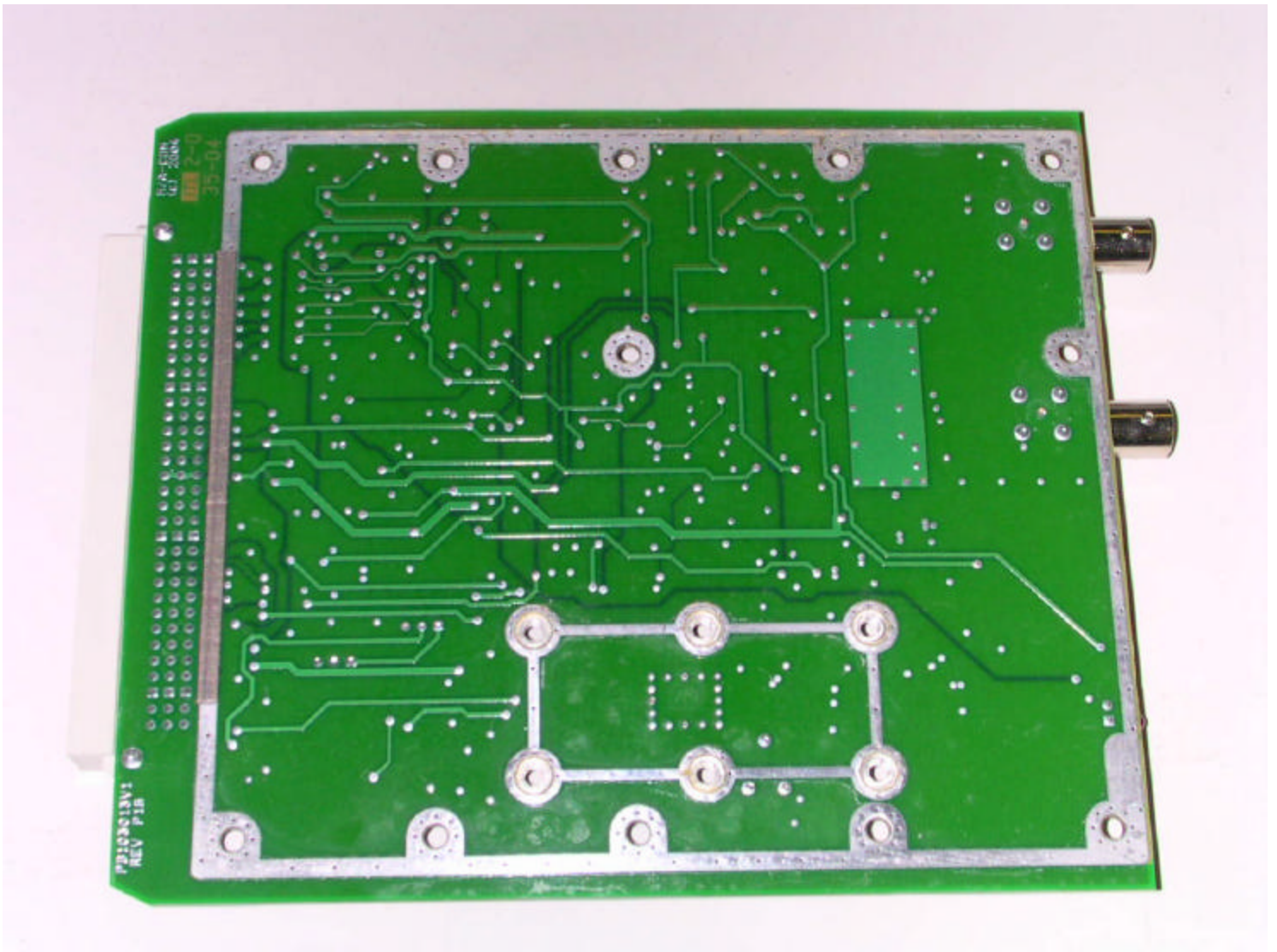




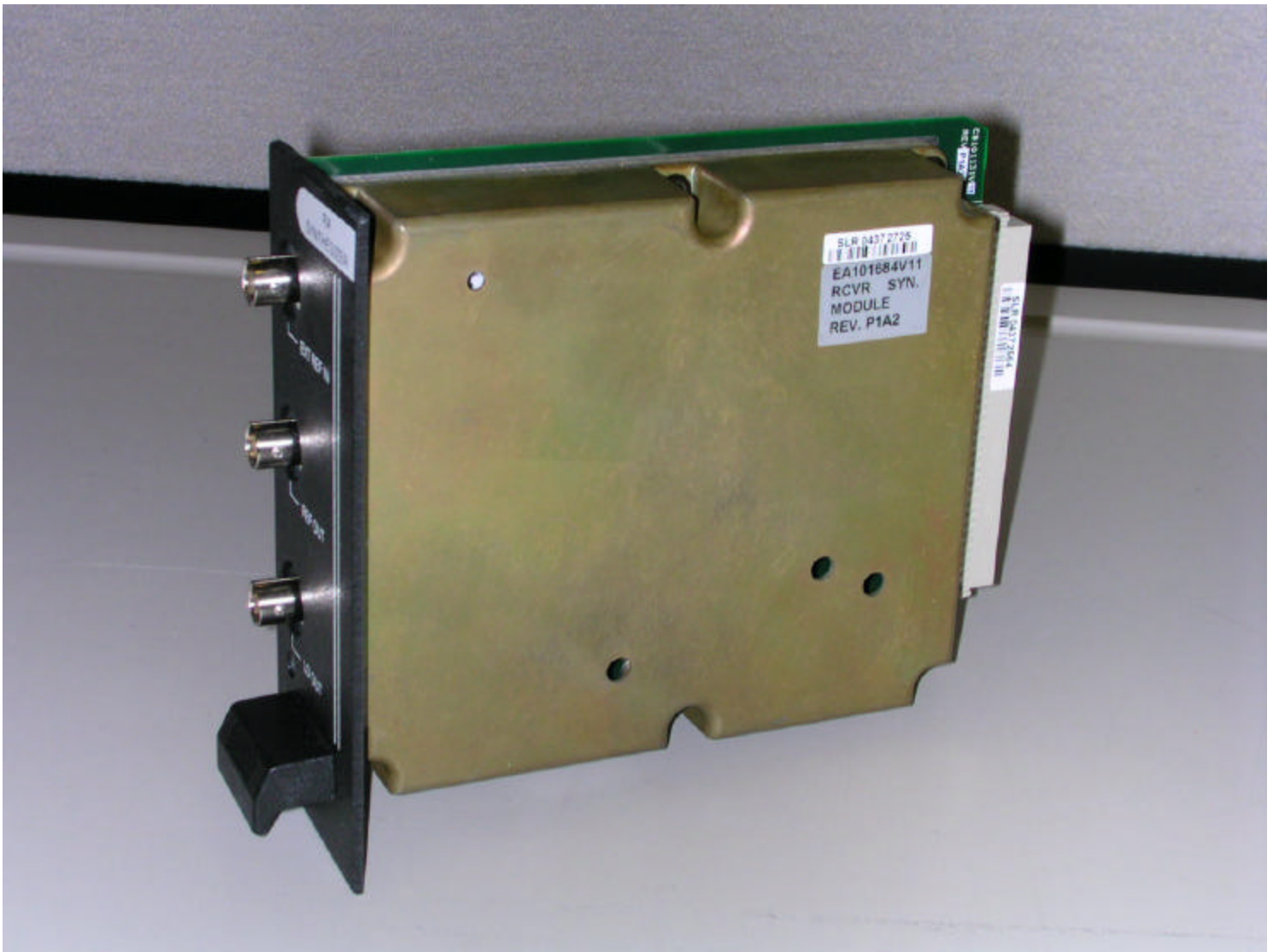
Tx Synthesizer 425-470 MHz



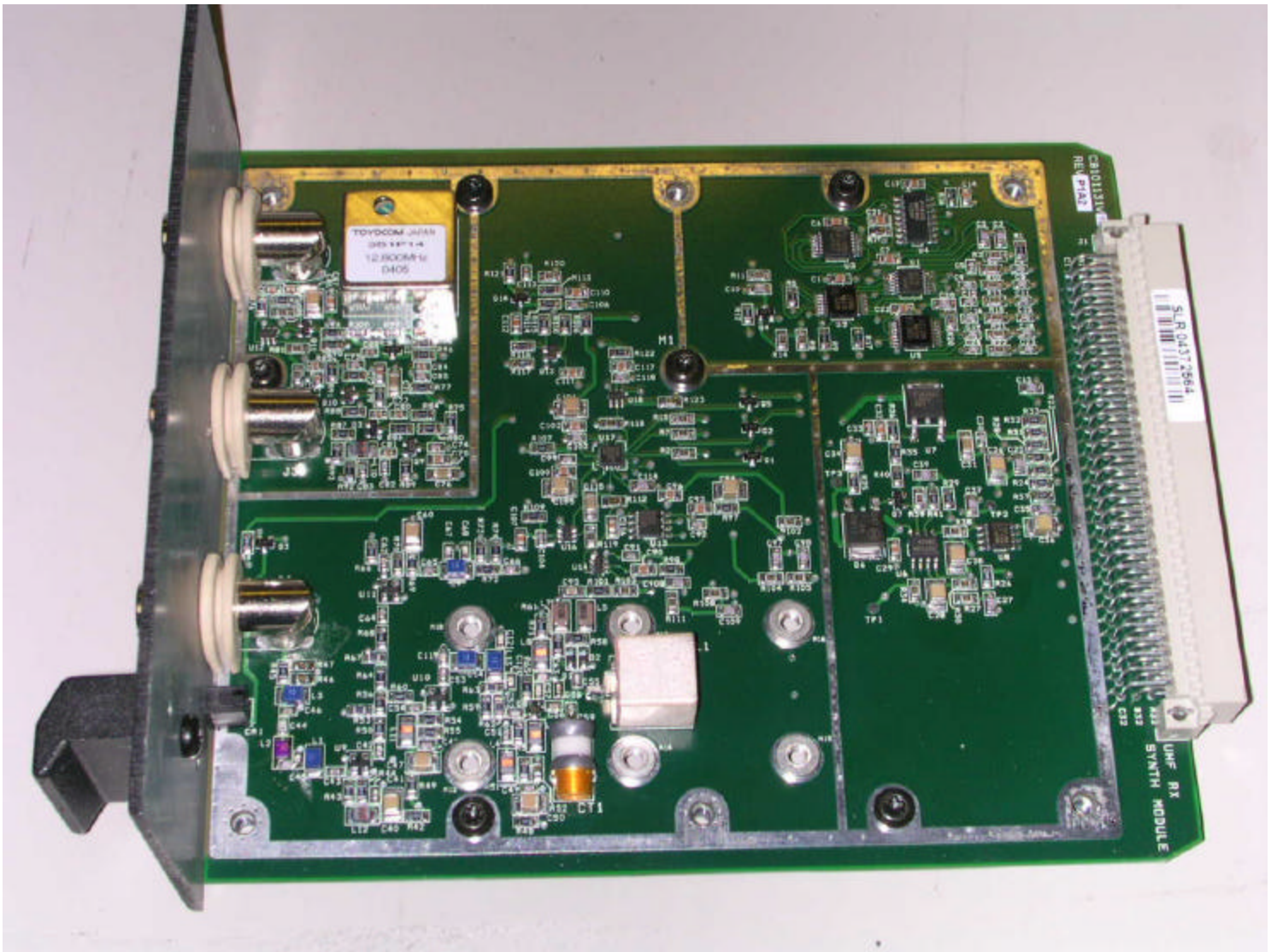
Tx Synthesizer 425-470 MHz (component side)



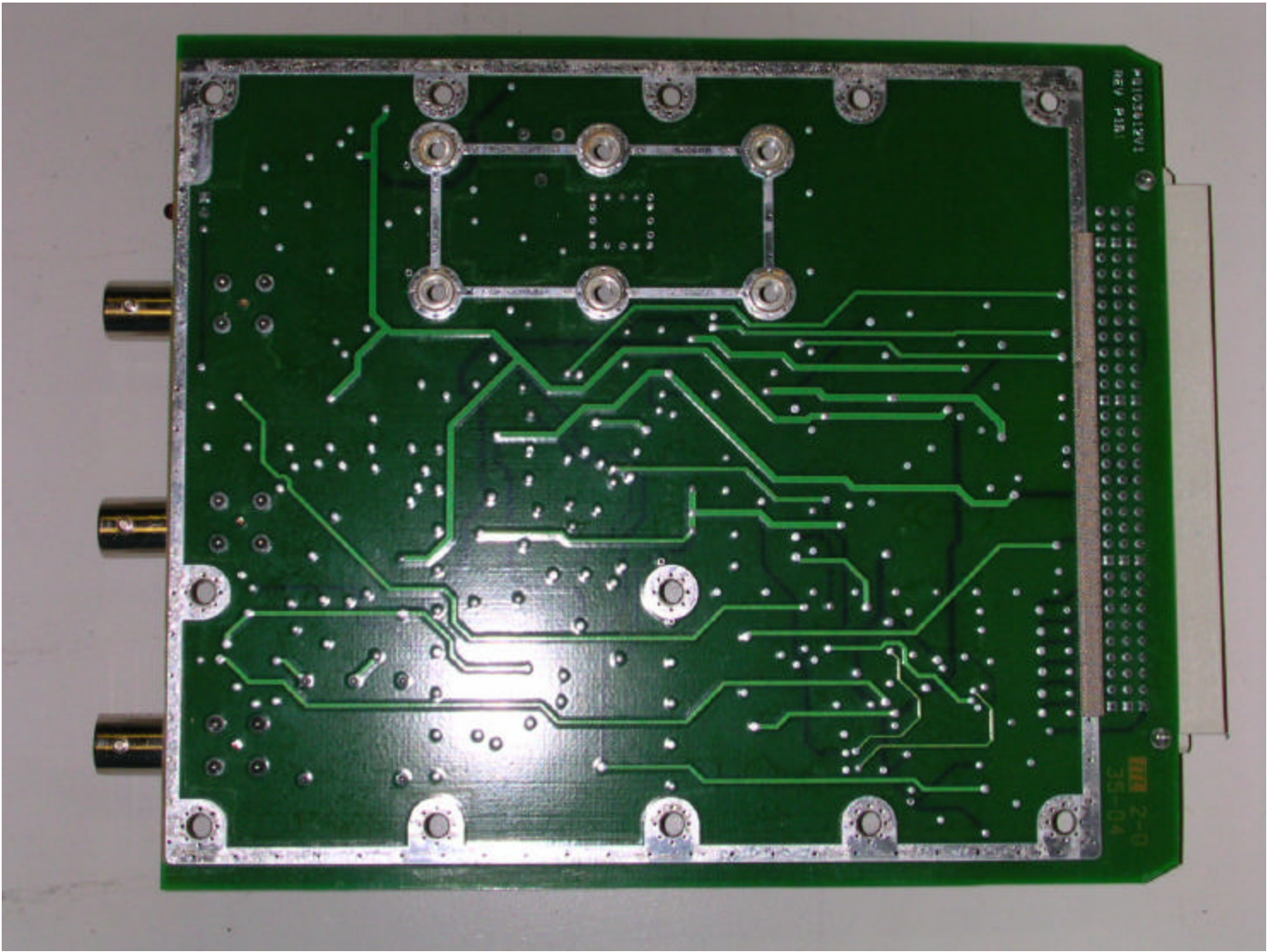
Tx Synthesizer 425-470 MHz (secondary side)



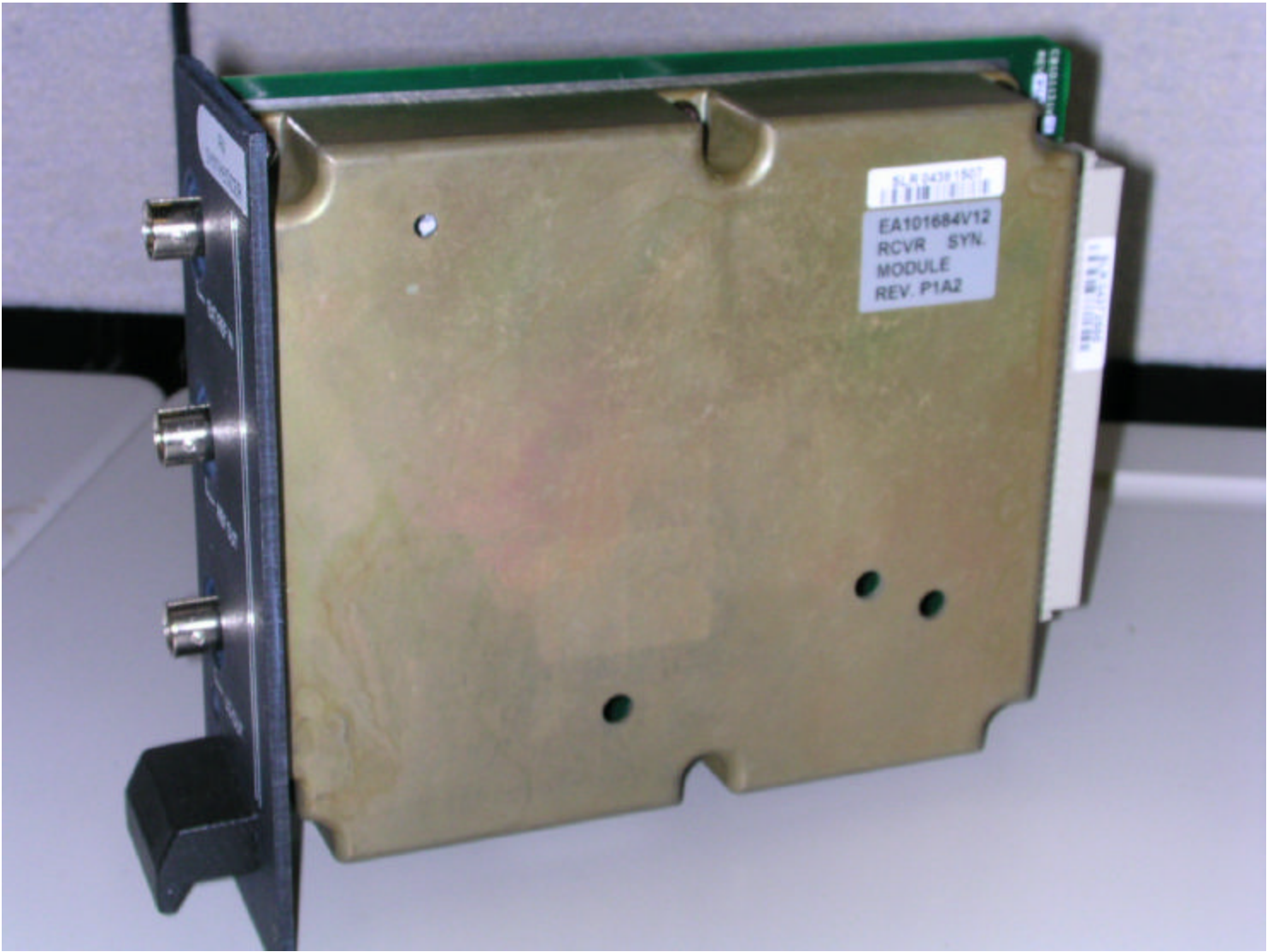
Tx Synthesizer 403-430 MHz



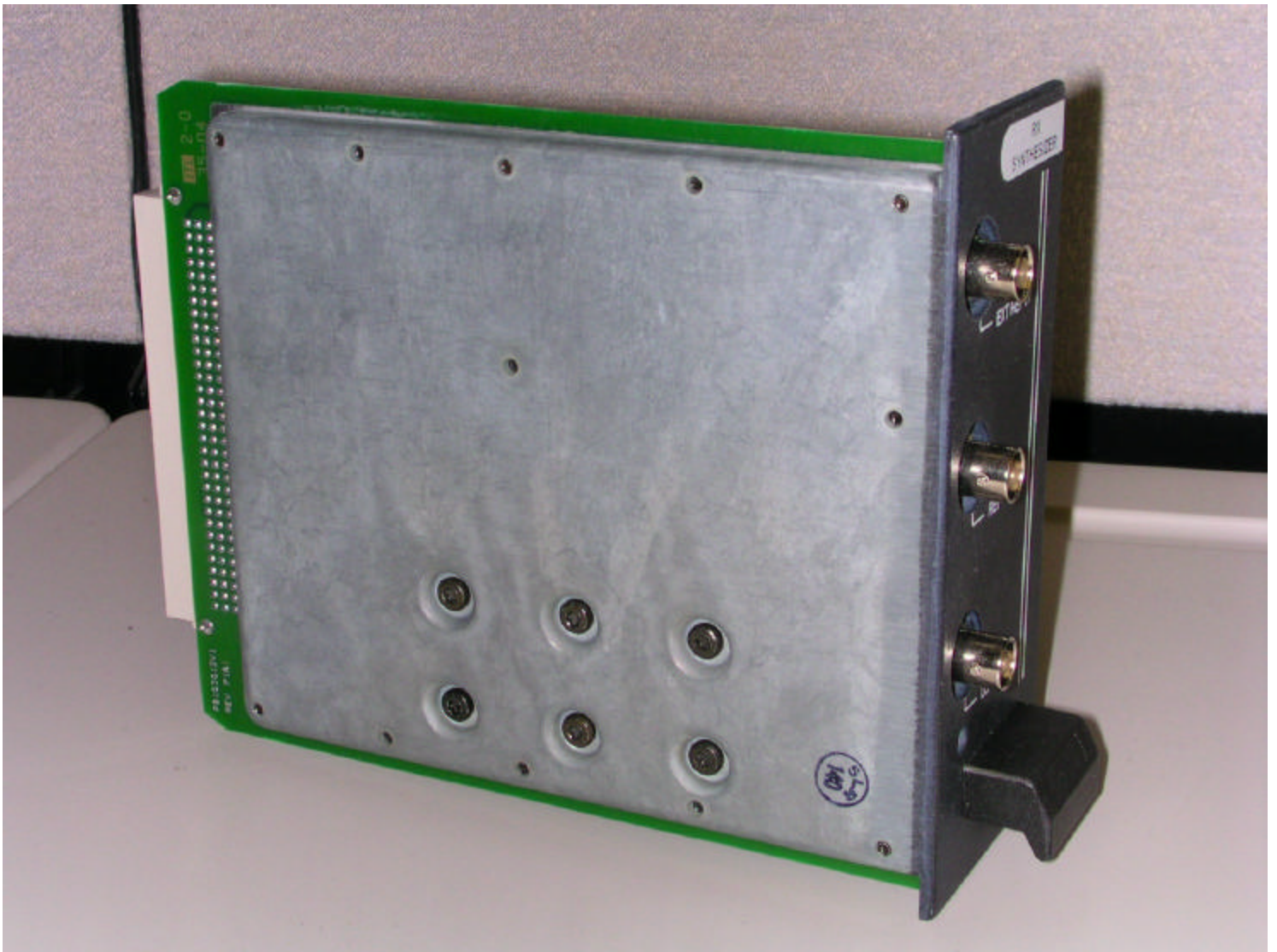
Tx Synthesizer 403-430 MHz (component side)



Tx Synthesizer 403-430 MHz (secondary side)

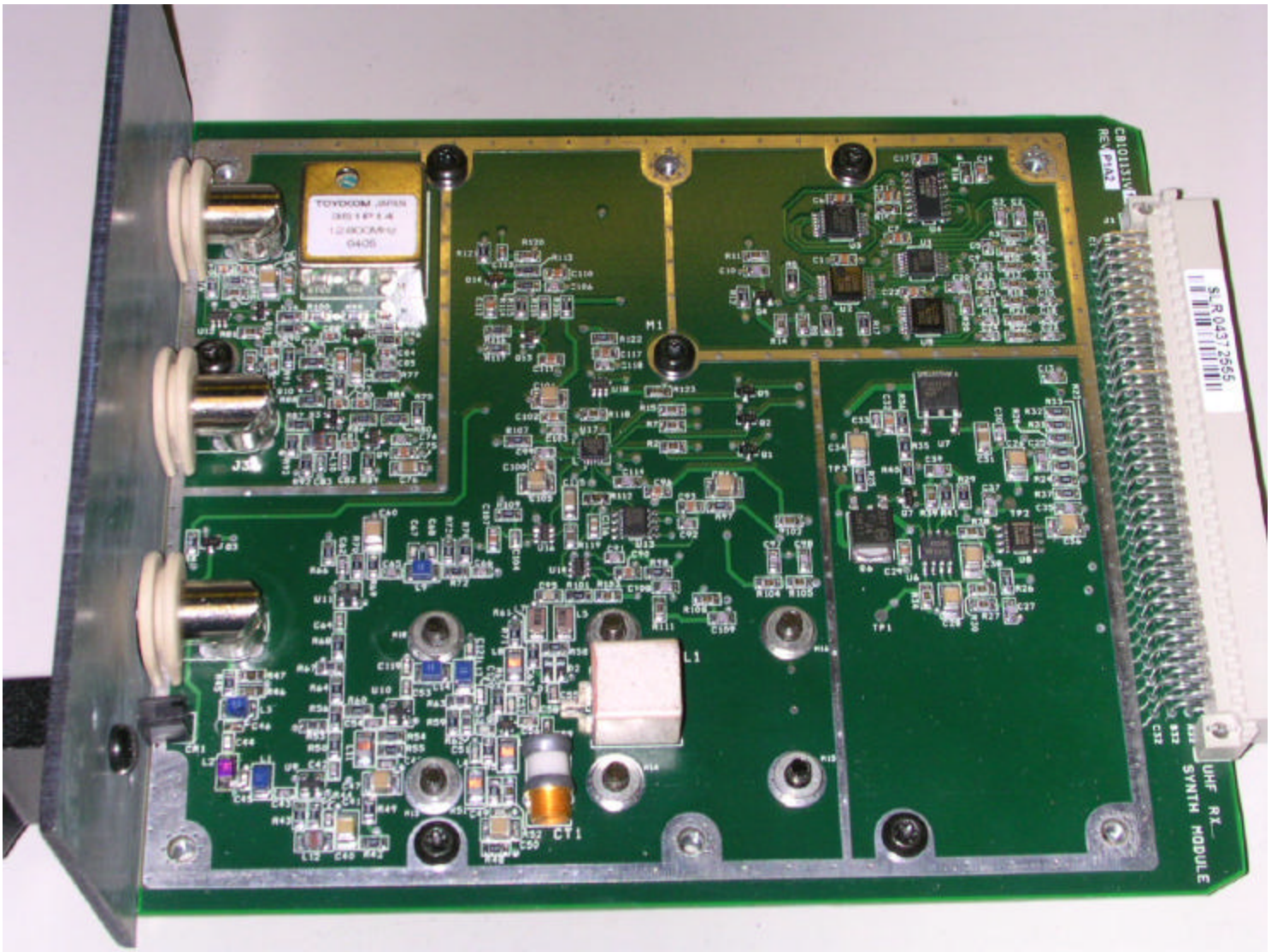


Rx synthesizer (400-430 MHz and 450-470 MHz) with shield

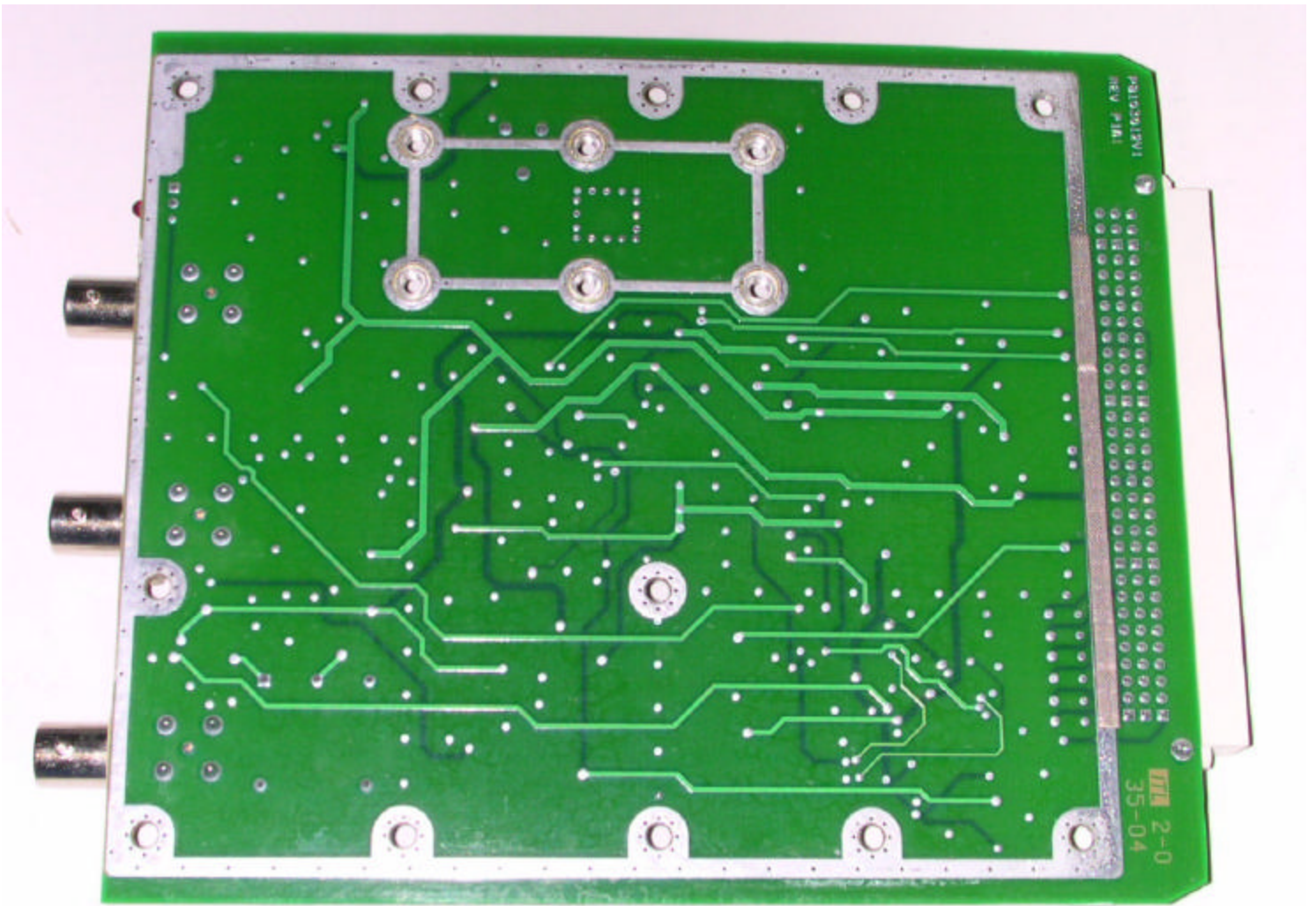


Rx synthesizer (400-430 MHz and 450-470 MHz) with secondary shield

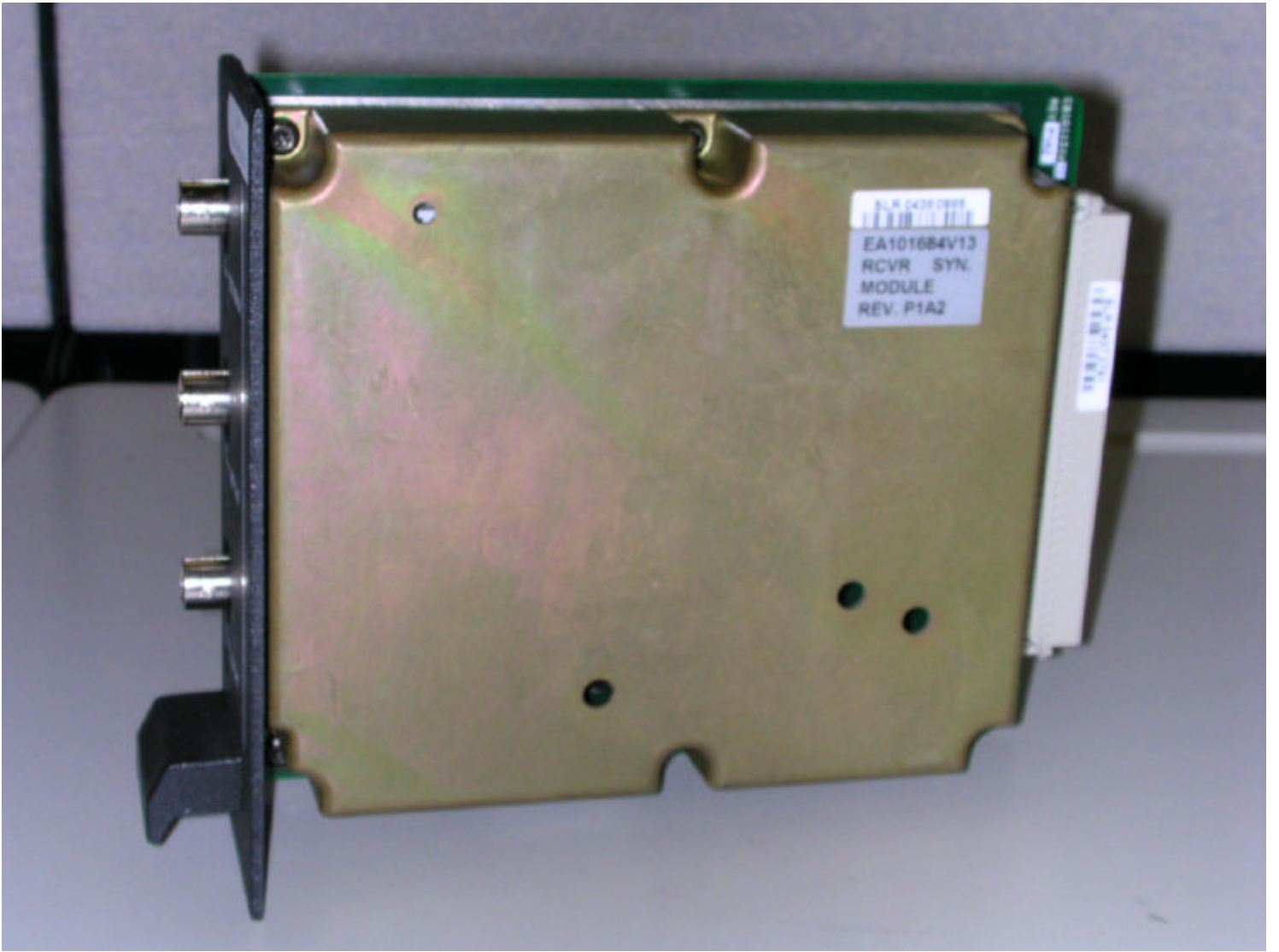




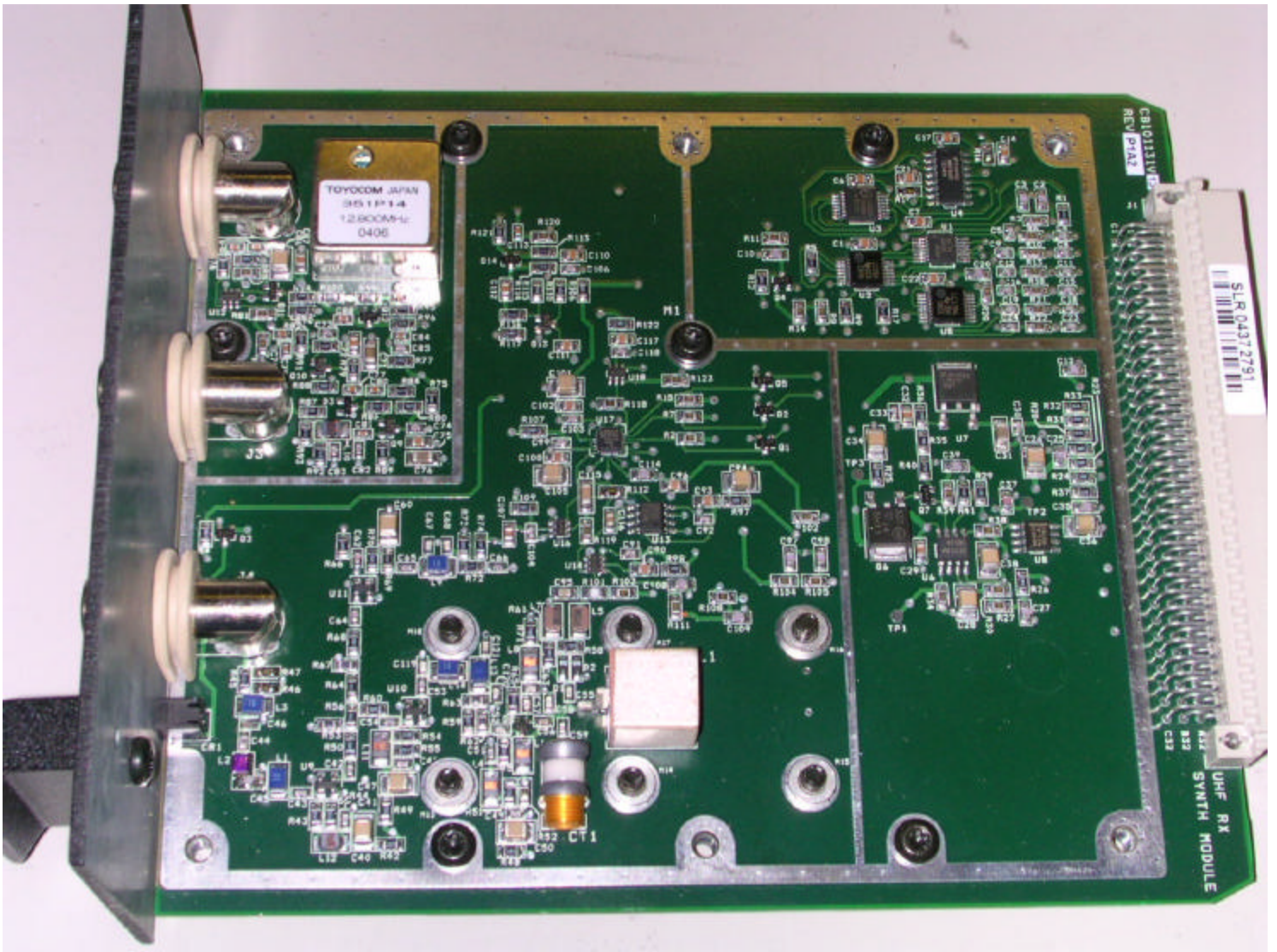
Rx synthesizer (400-430 MHz and 450-470 MHz) component side



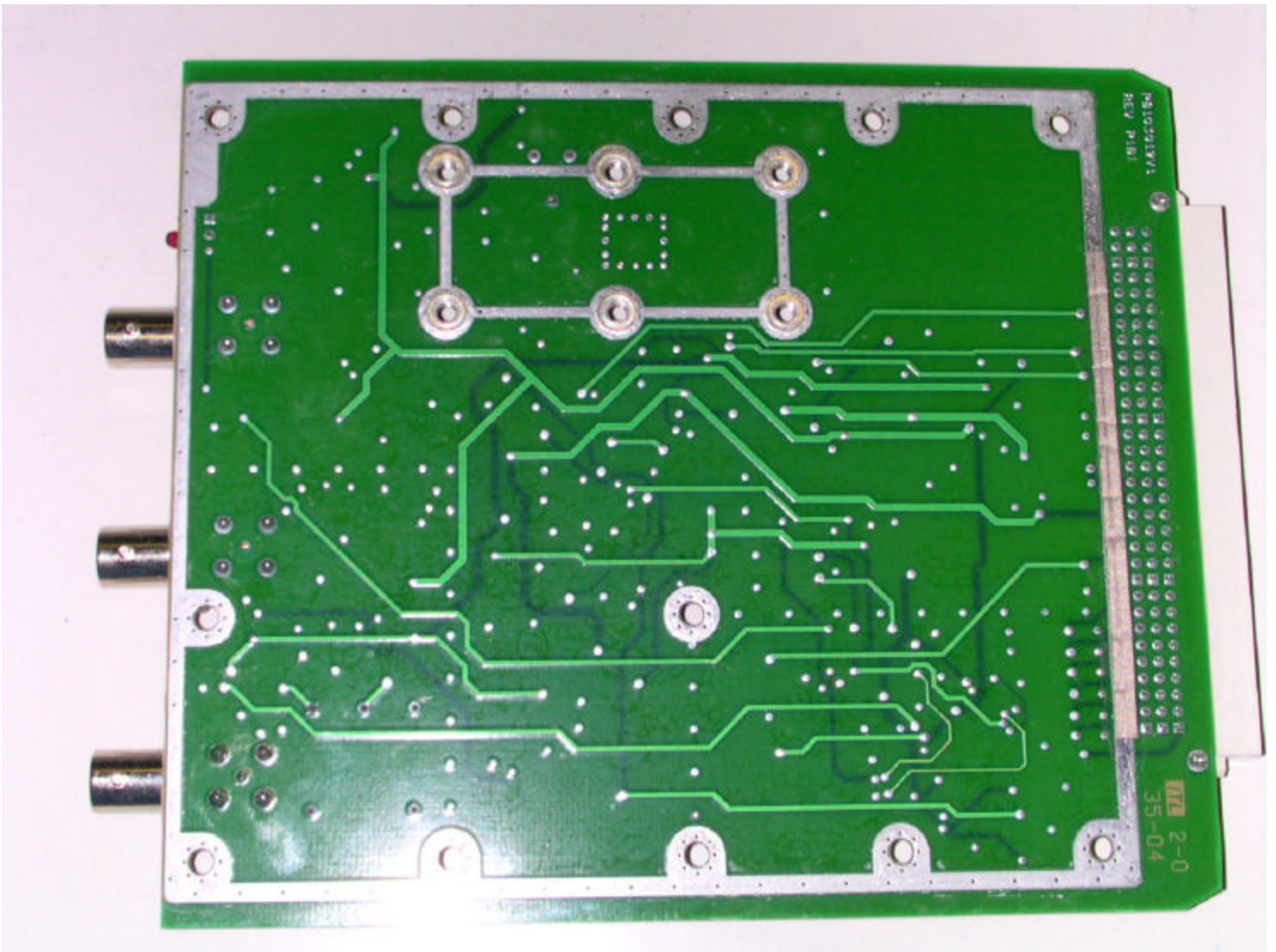
Rx synthesizer (400-430 MHz and 450-470 MHz) secondary side



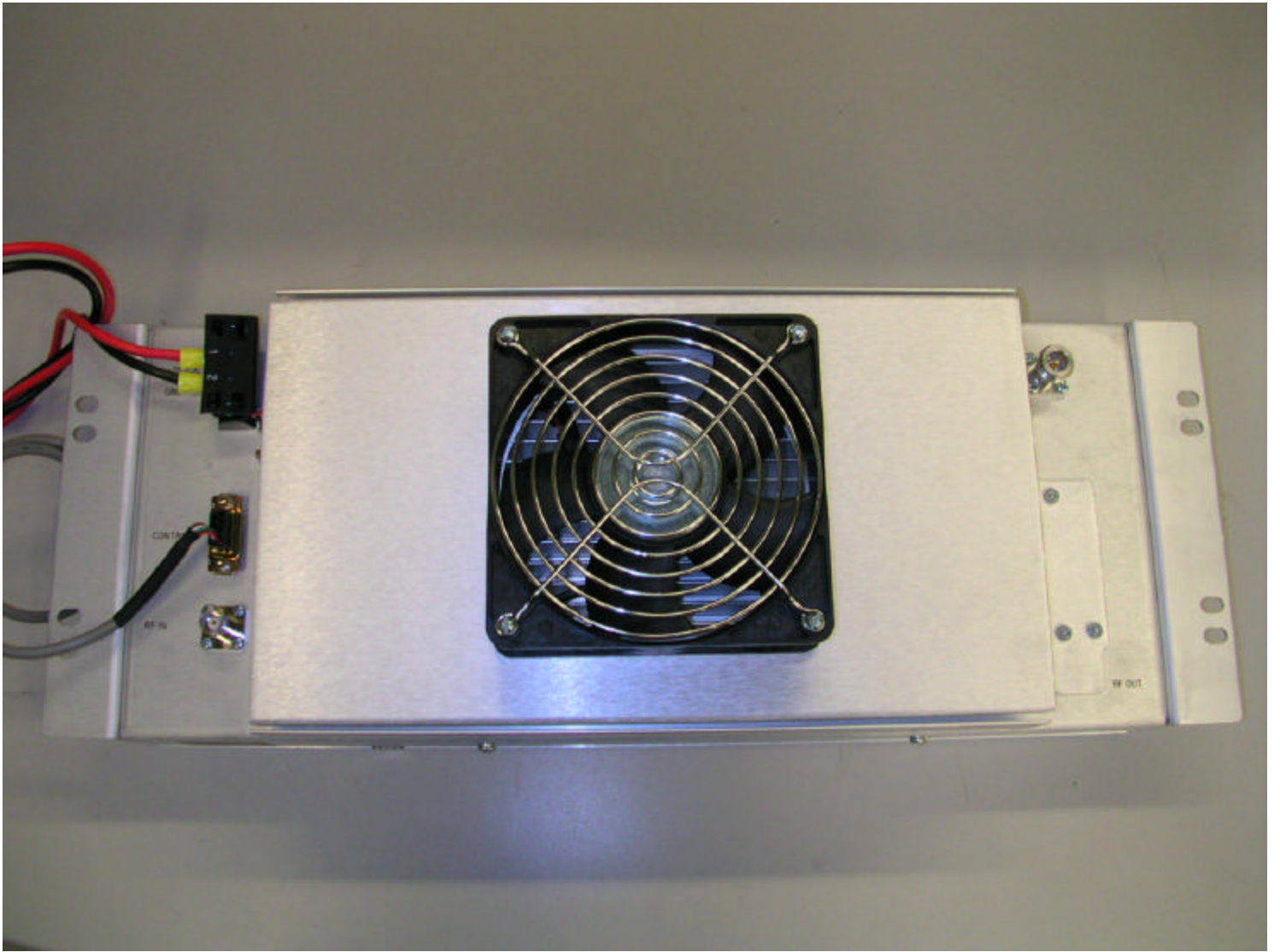
Rx synthesizer (425-450 MHz and 470-512 MHz) with shield



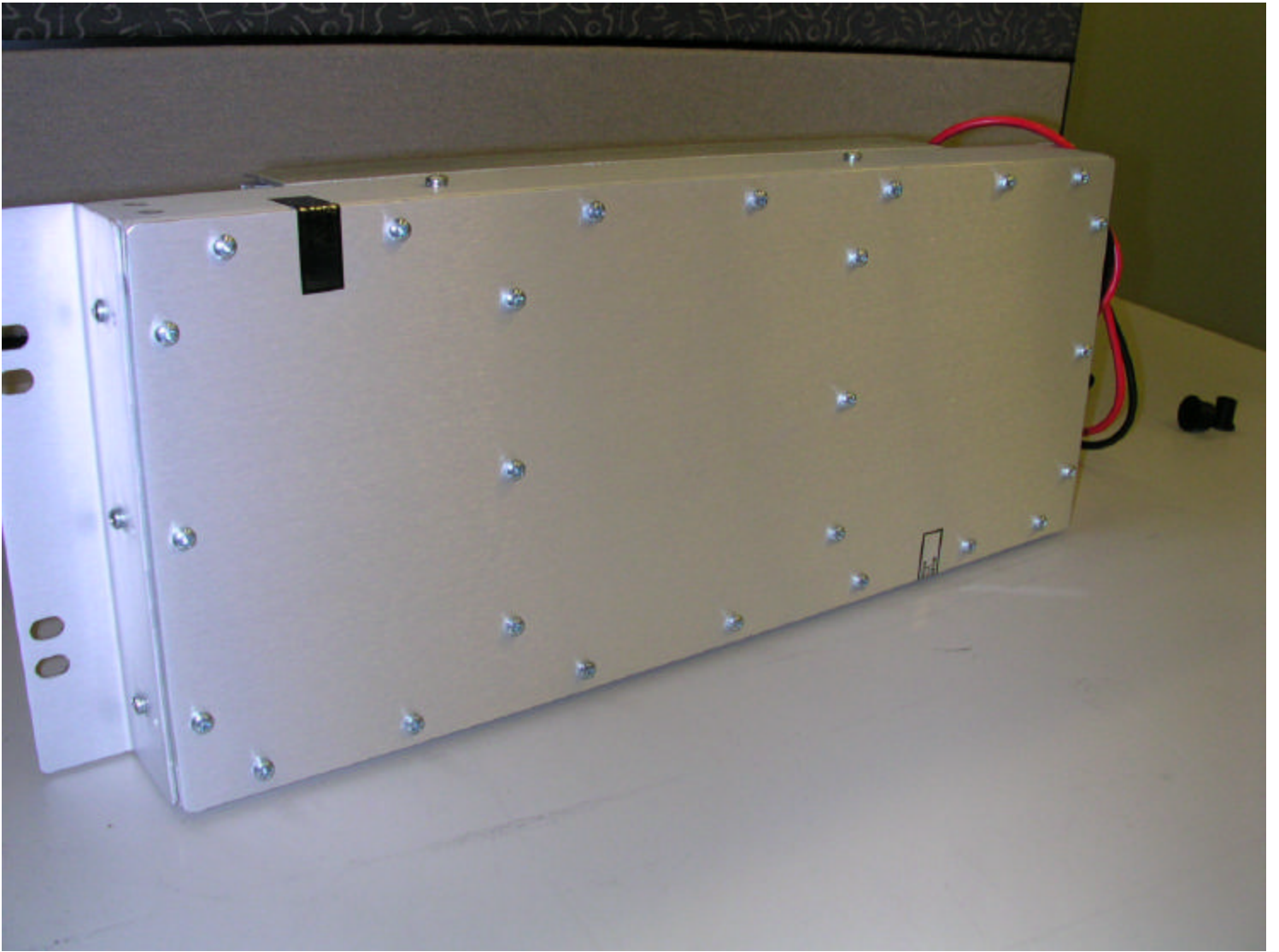
Rx synthesizer (425-450 MHz and 470-512 MHz) component side



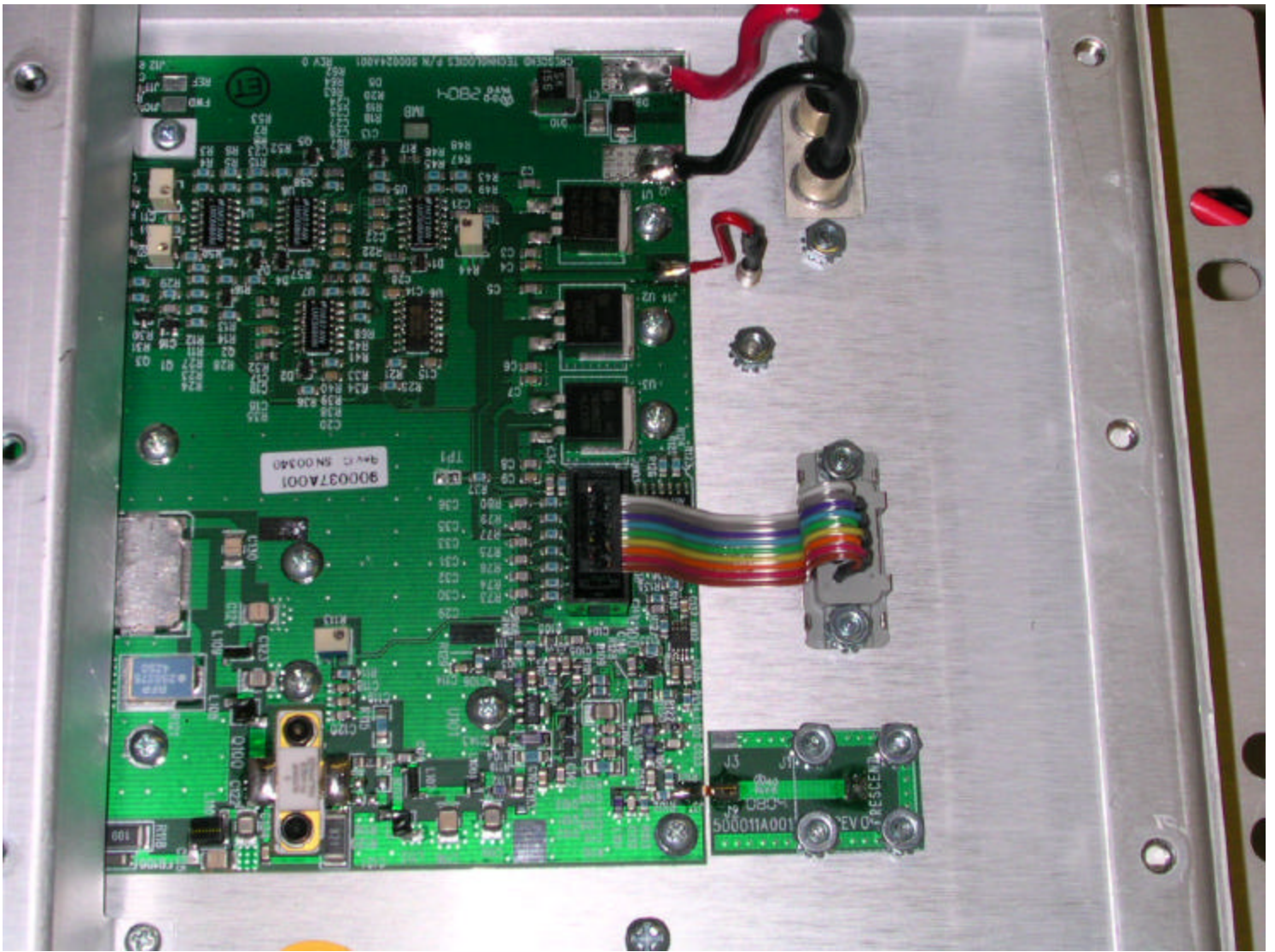
Rx synthesizer (425-450 MHz and 470-512 MHz) secondary side



Power Amplifier (403-450 MHz) front

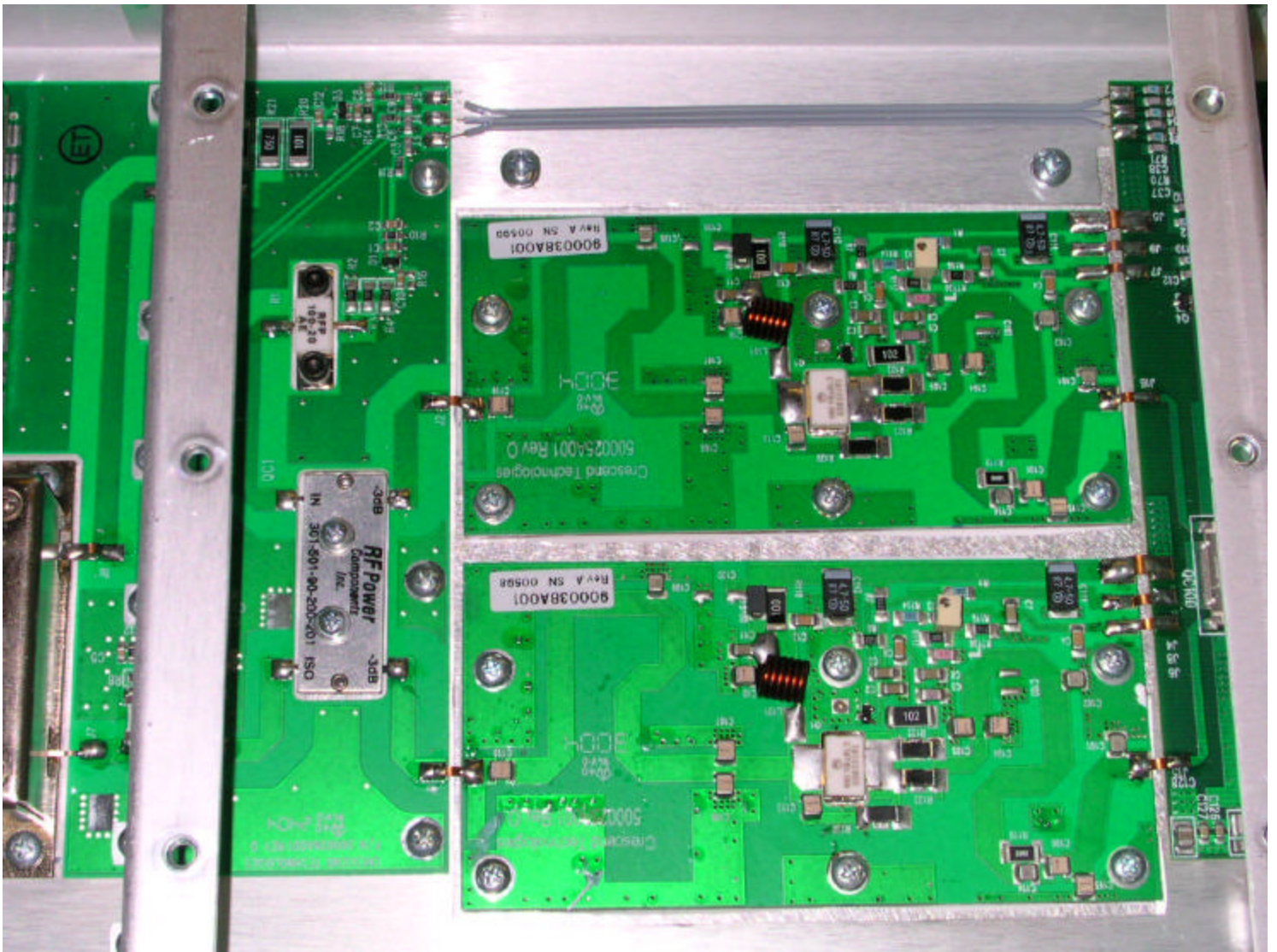


Power Amplifier (403-450 MHz) back

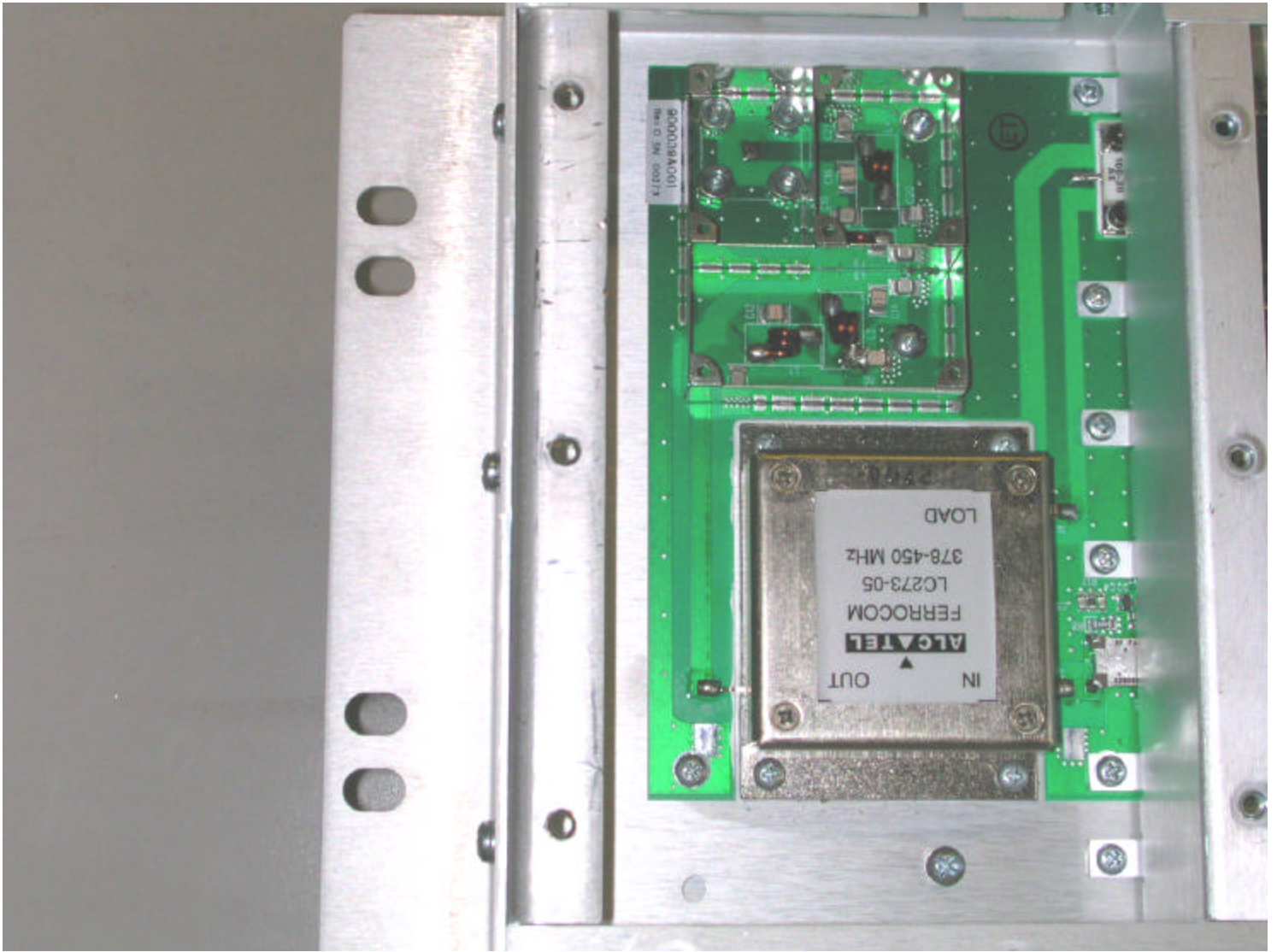


Power Amplifier (403-450 MHz) internal picture 1





Power Amplifier (403-450 MHz) internal picture 2



Power Amplifier (403-450 MHz) internal picture 3