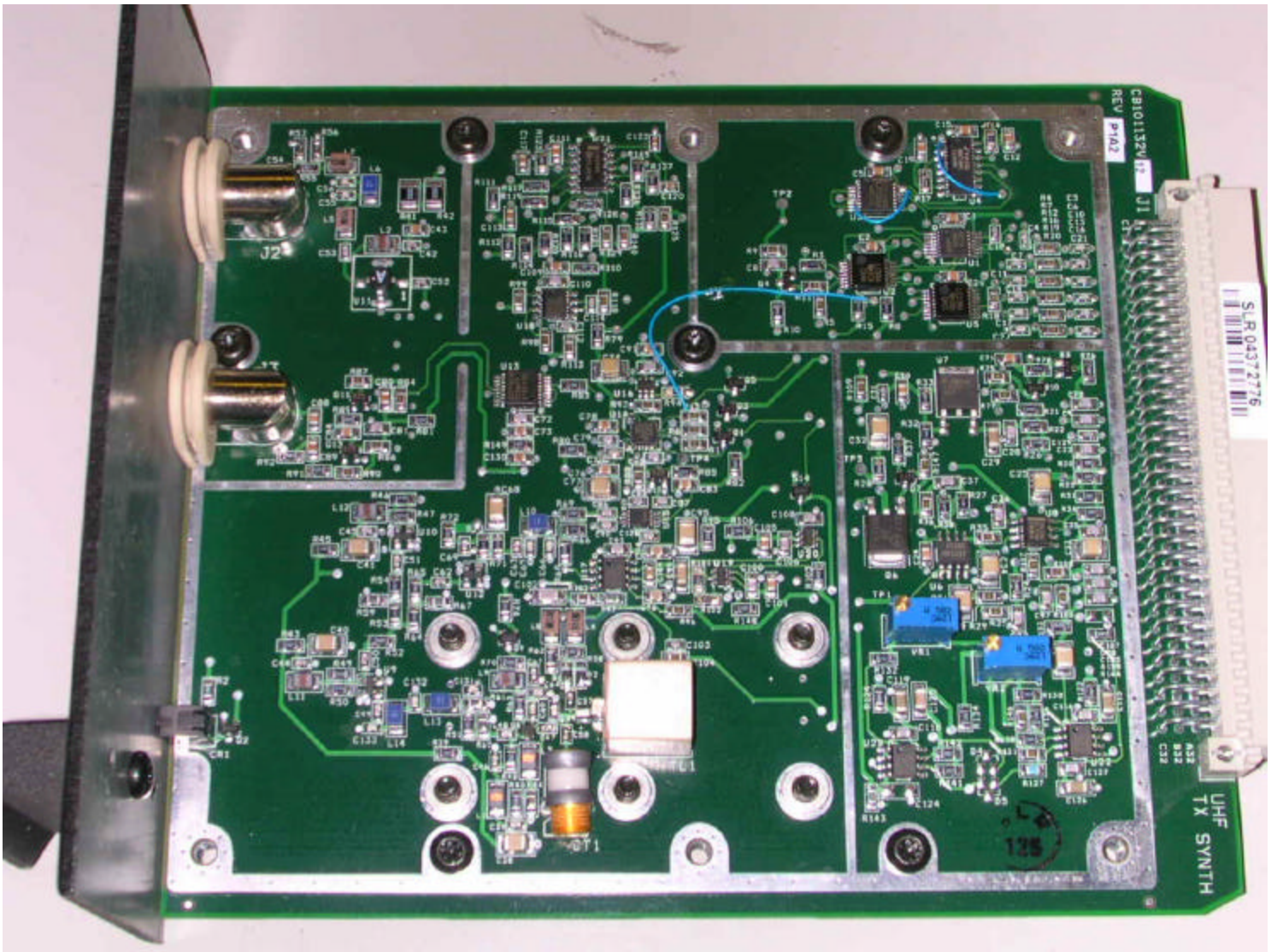
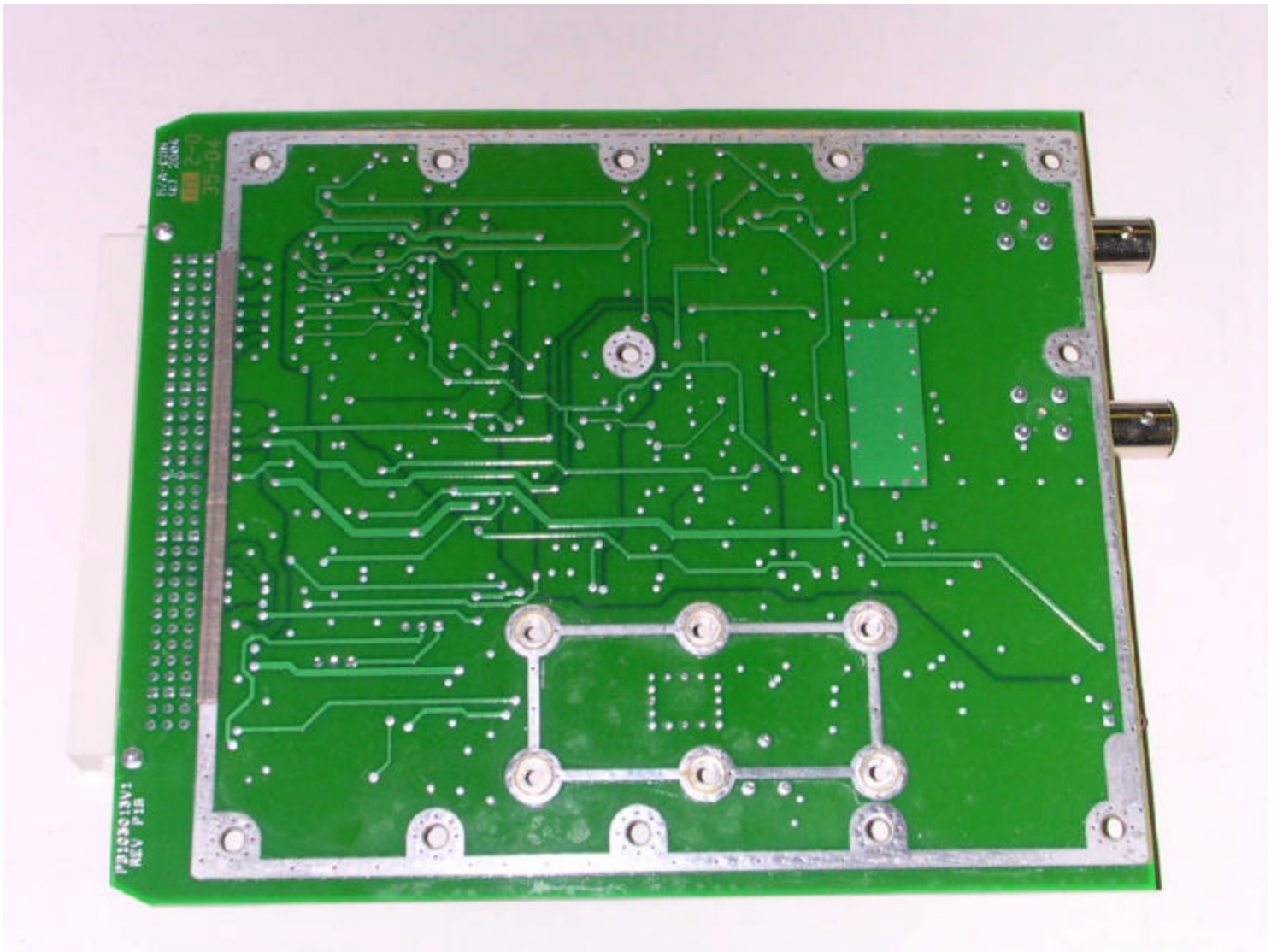




Tx Synthesizer 425-470 MHz



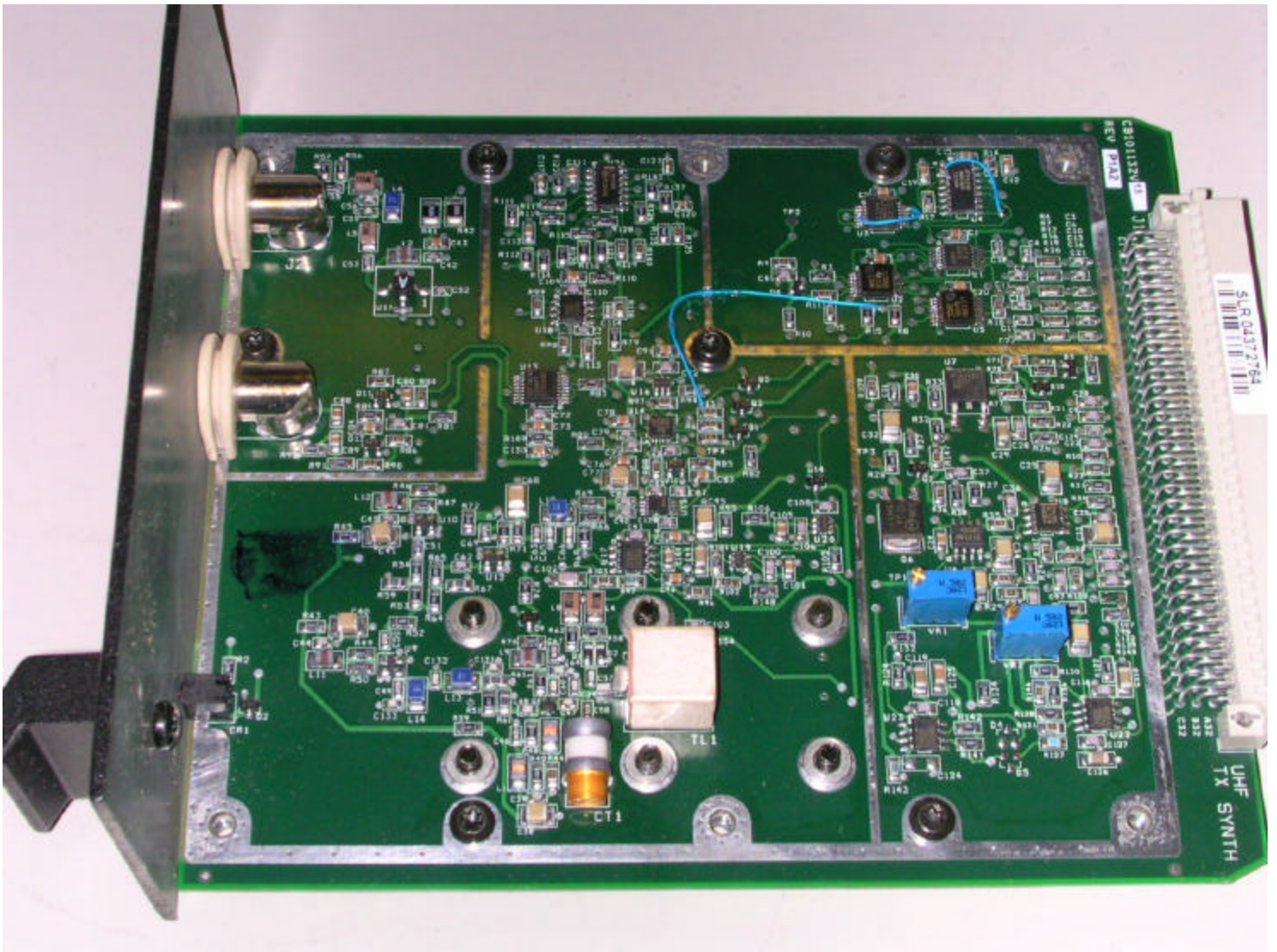
Tx Synthesizer 425-470 MHz (component side)



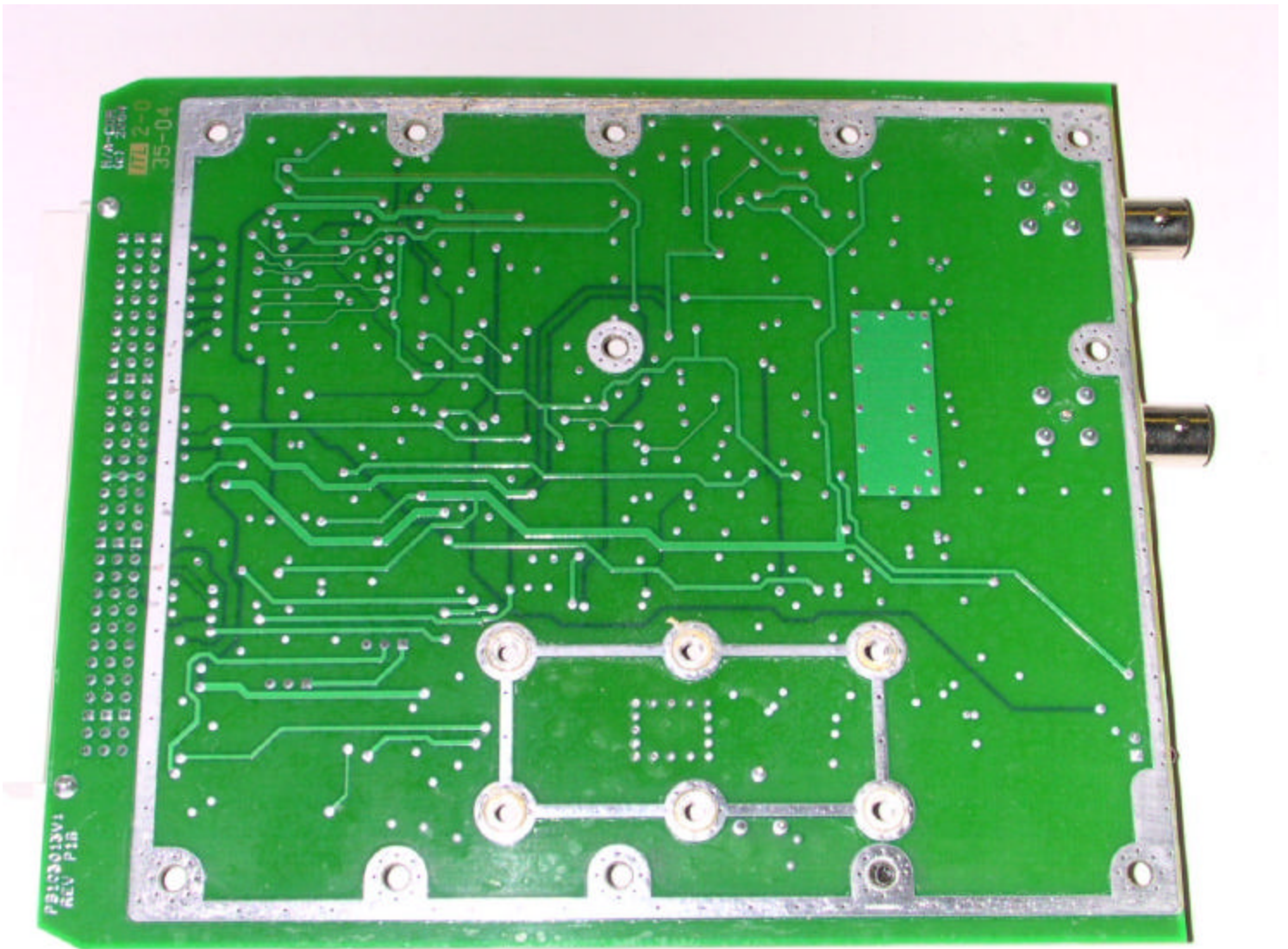
Tx Synthesizer 425-470 MHz (secondary side)



Tx Synthesizer 470-512 MHz



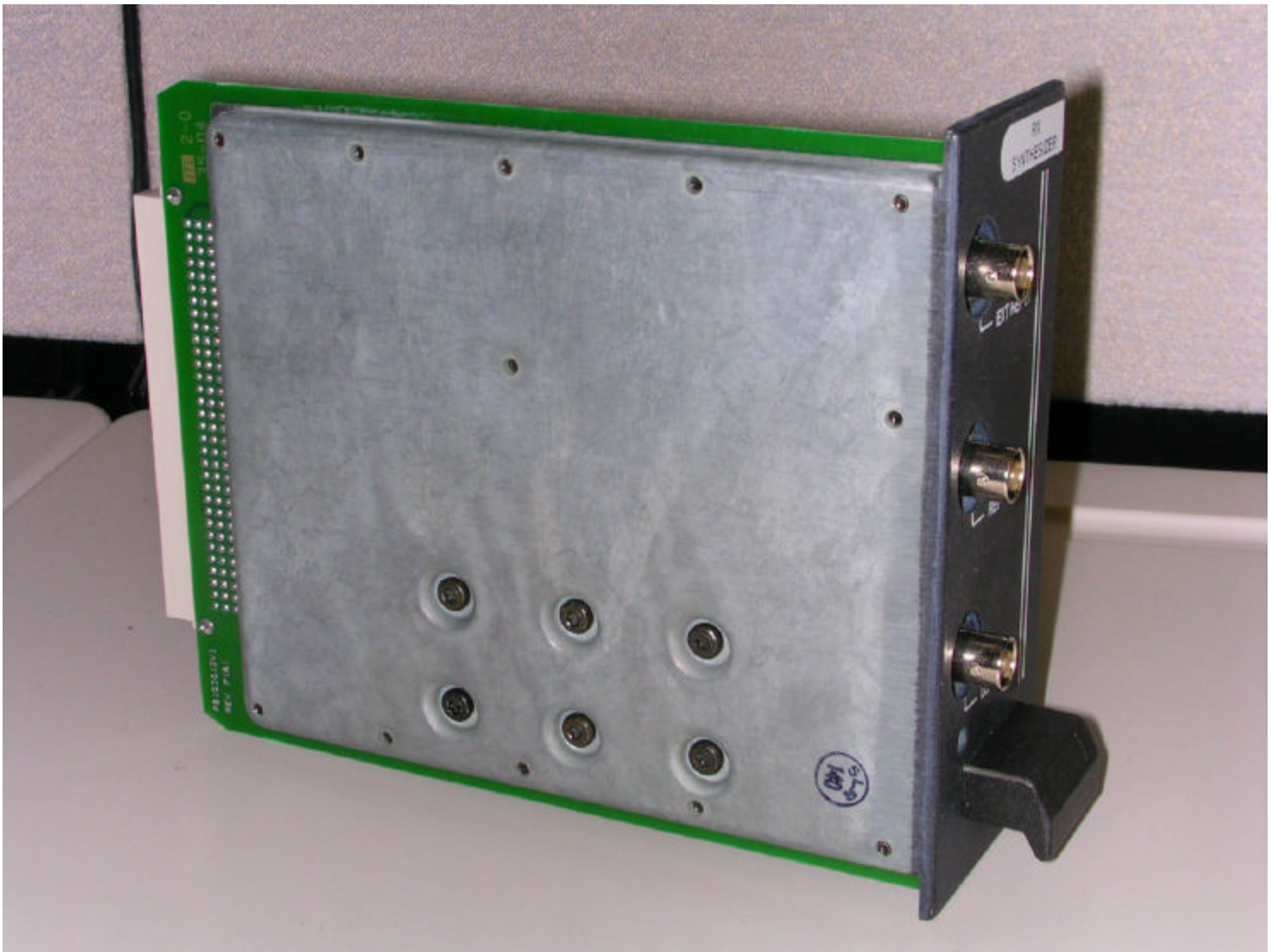
Tx Synthesizer 470-512 MHz (component side)



Tx Synthesizer 470-512 MHz (secondary side)

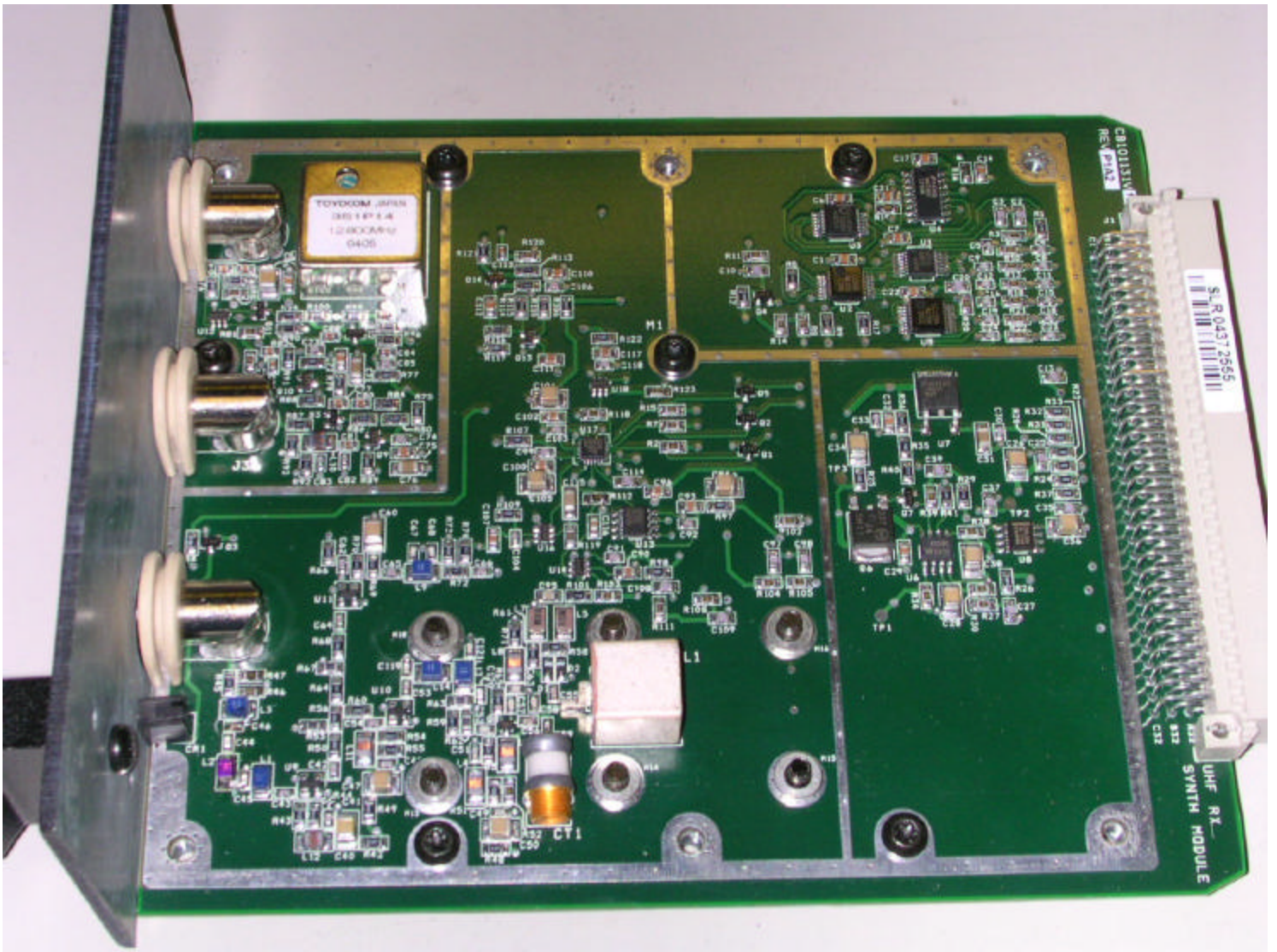


Rx synthesizer (400-430 MHz and 450-470 MHz) with shield



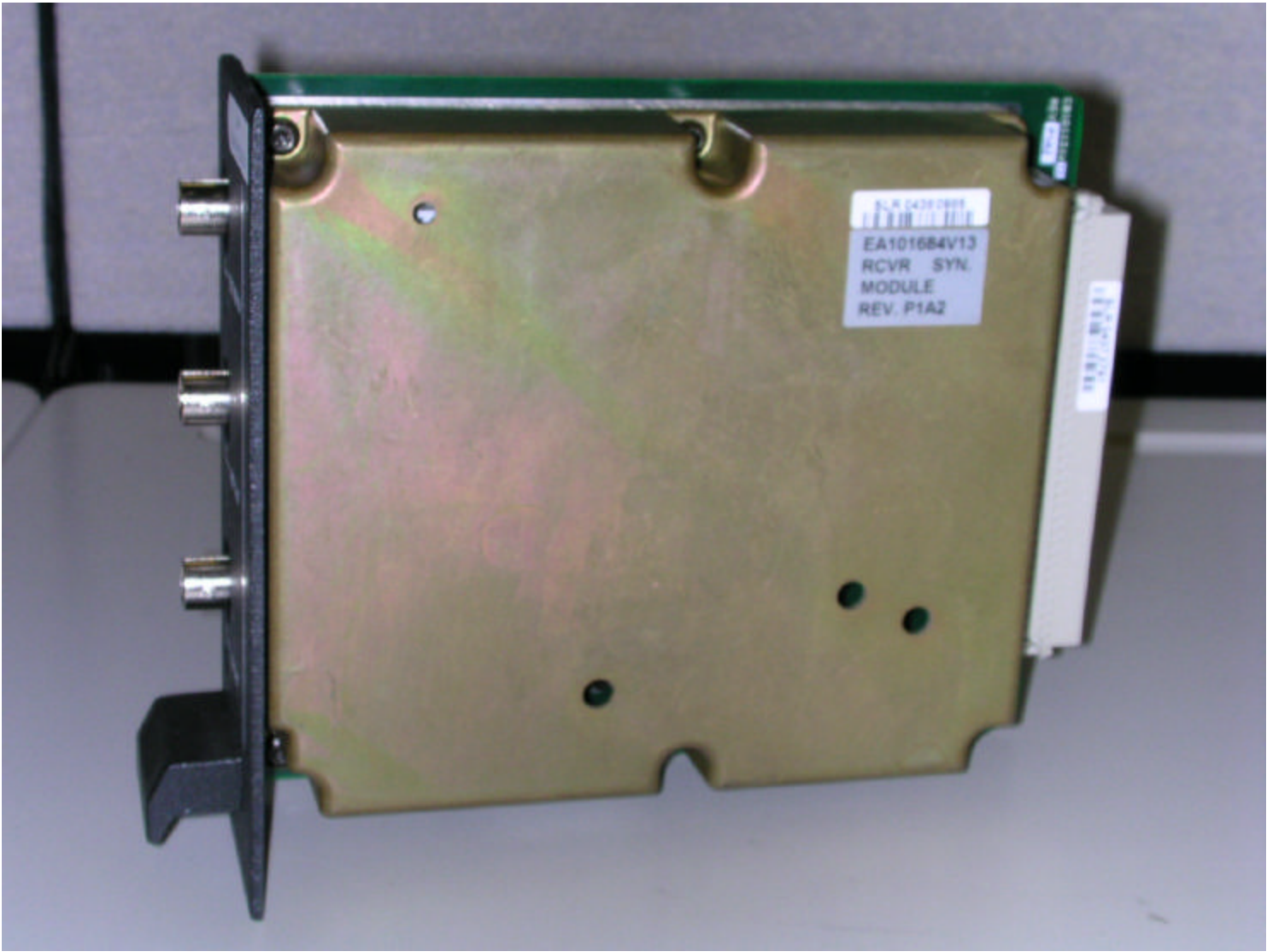
Rx synthesizer (400-430 MHz and 450-470 MHz) with secondary shield



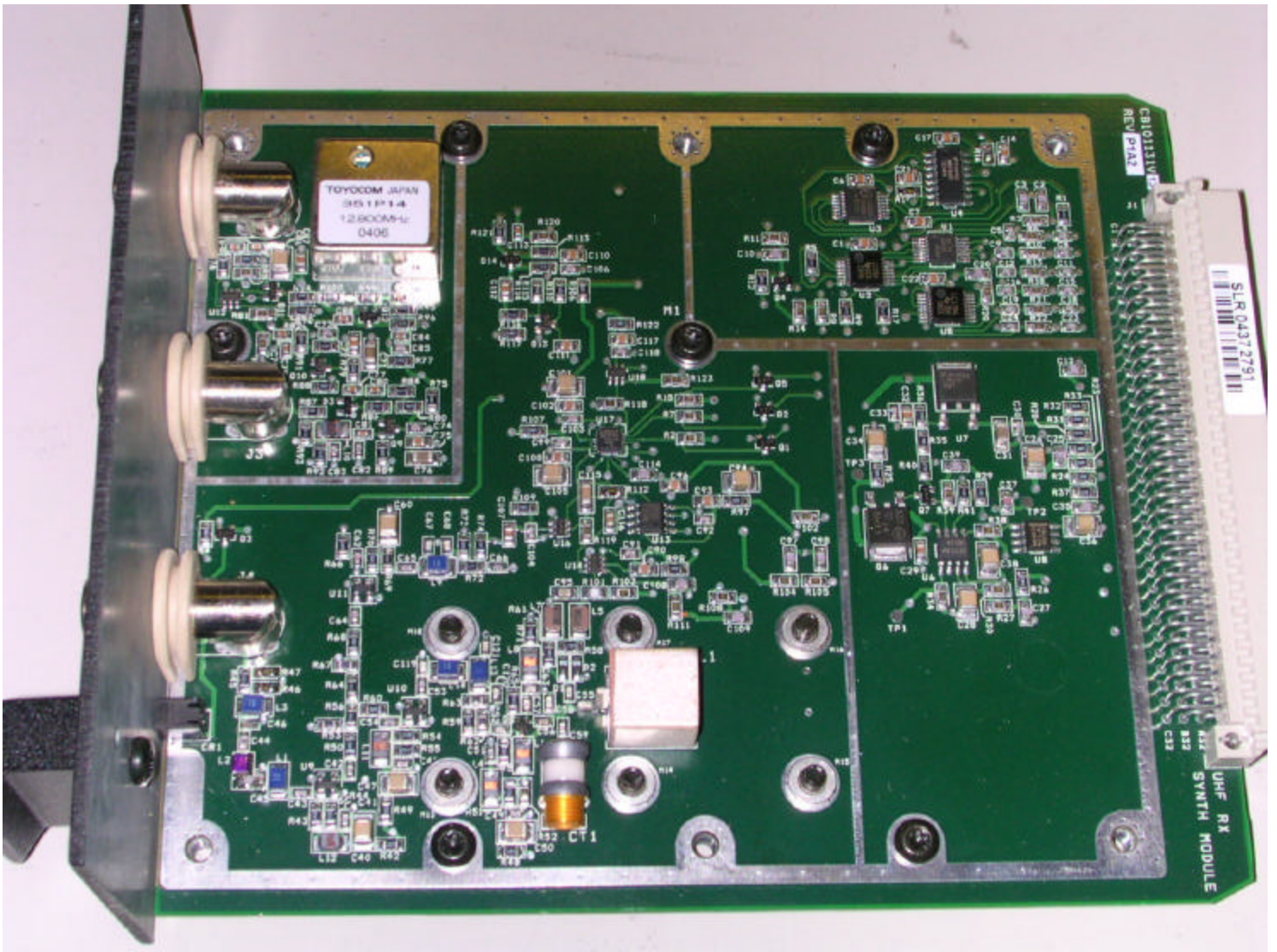


Rx synthesizer (400-430 MHz and 450-470 MHz) component side

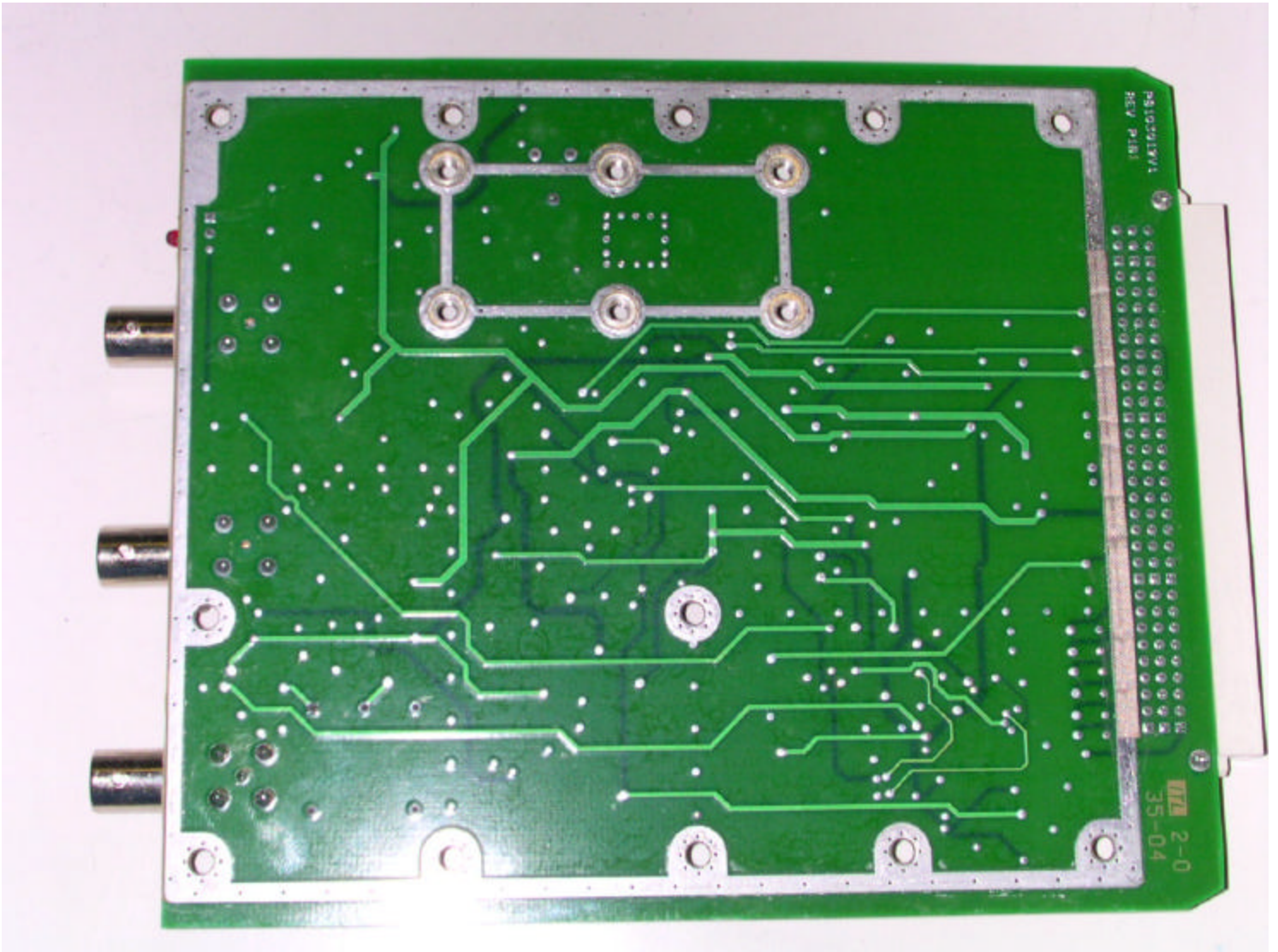




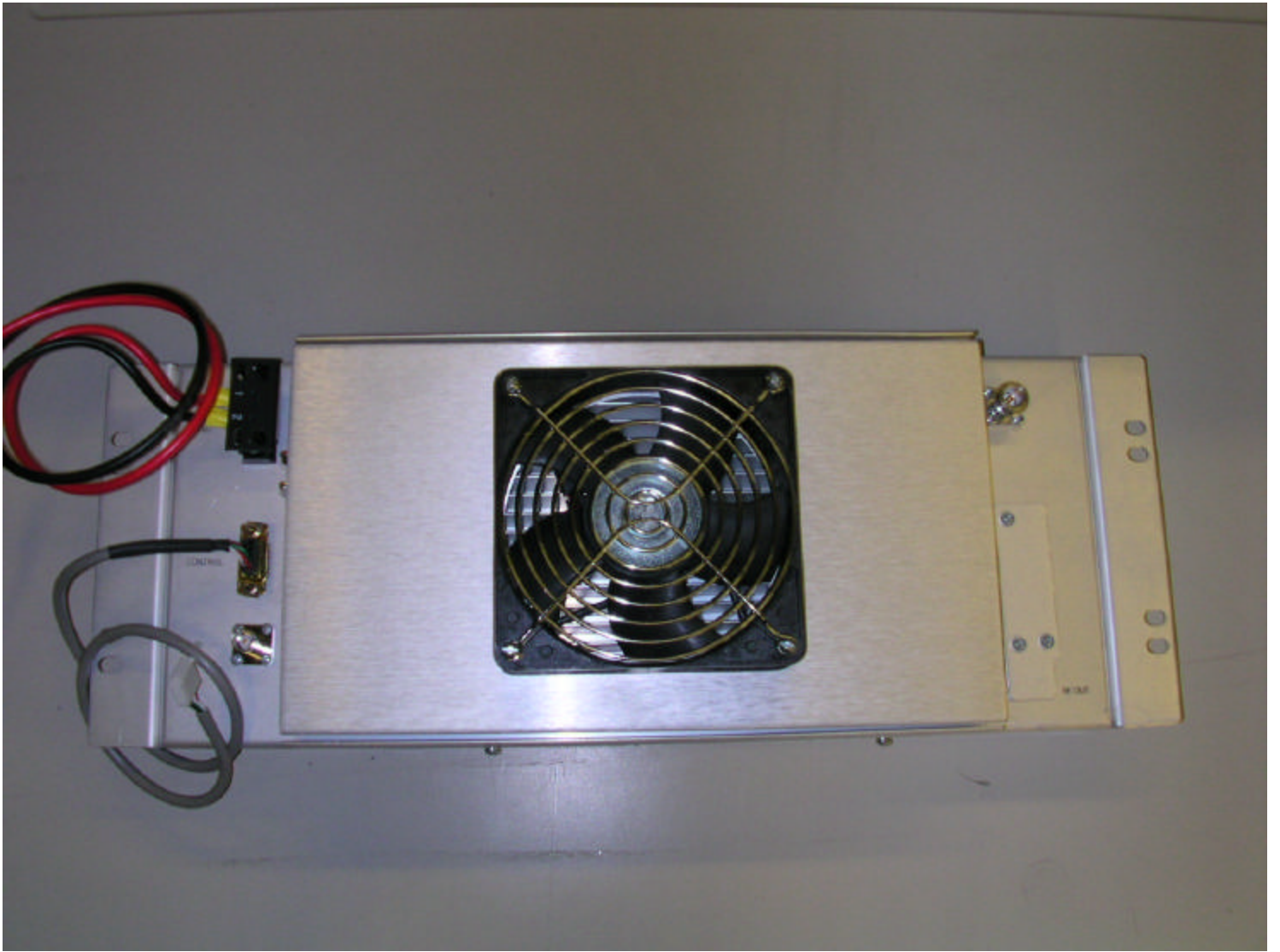
Rx synthesizer (425-450 MHz and 470-512 MHz) with shield



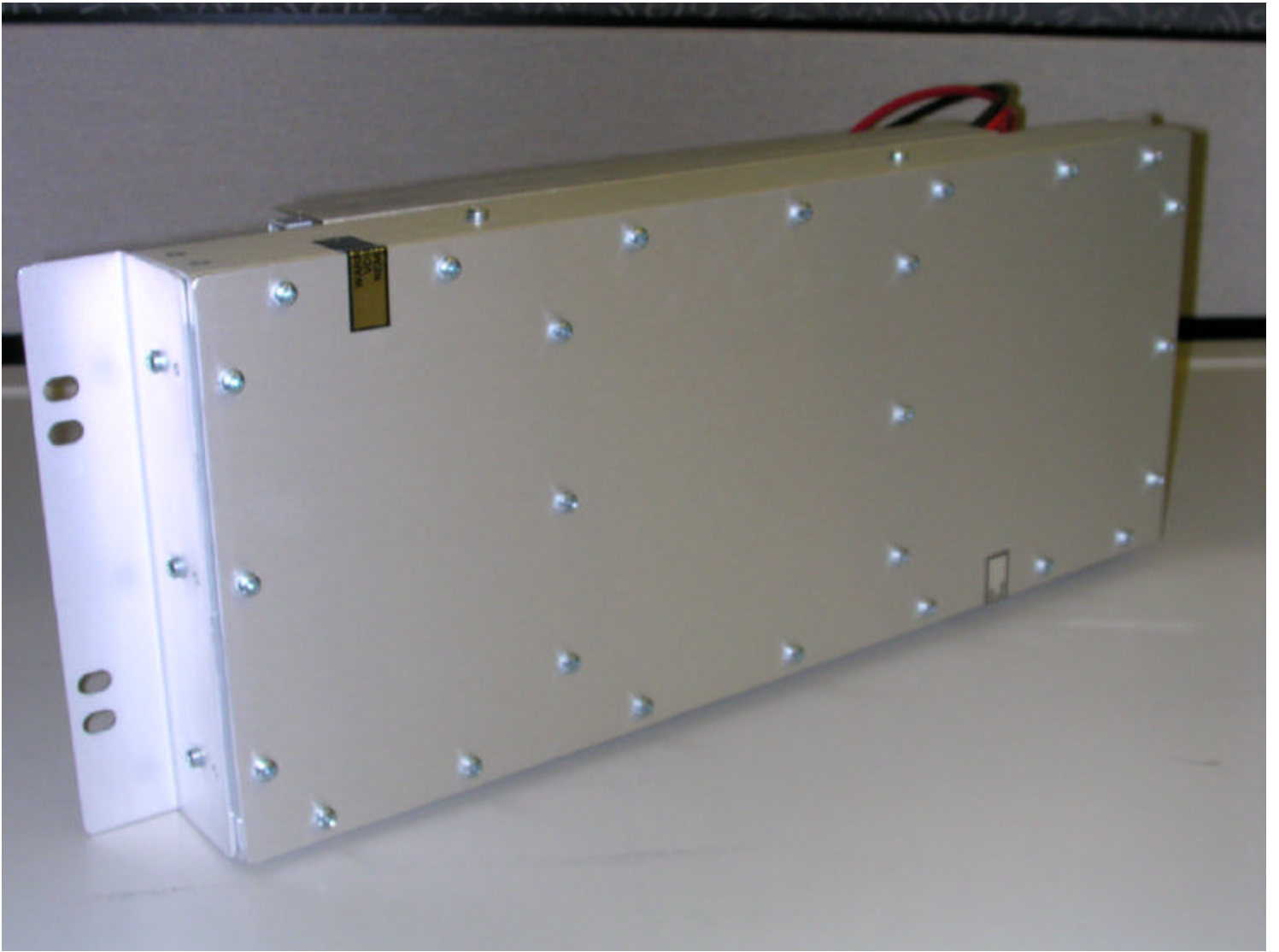
Rx synthesizer (425-450 MHz and 470-512 MHz) component side



Rx synthesizer (425-450 MHz and 470-512 MHz) secondary side



Power Amplifier (450-512 MHz) front

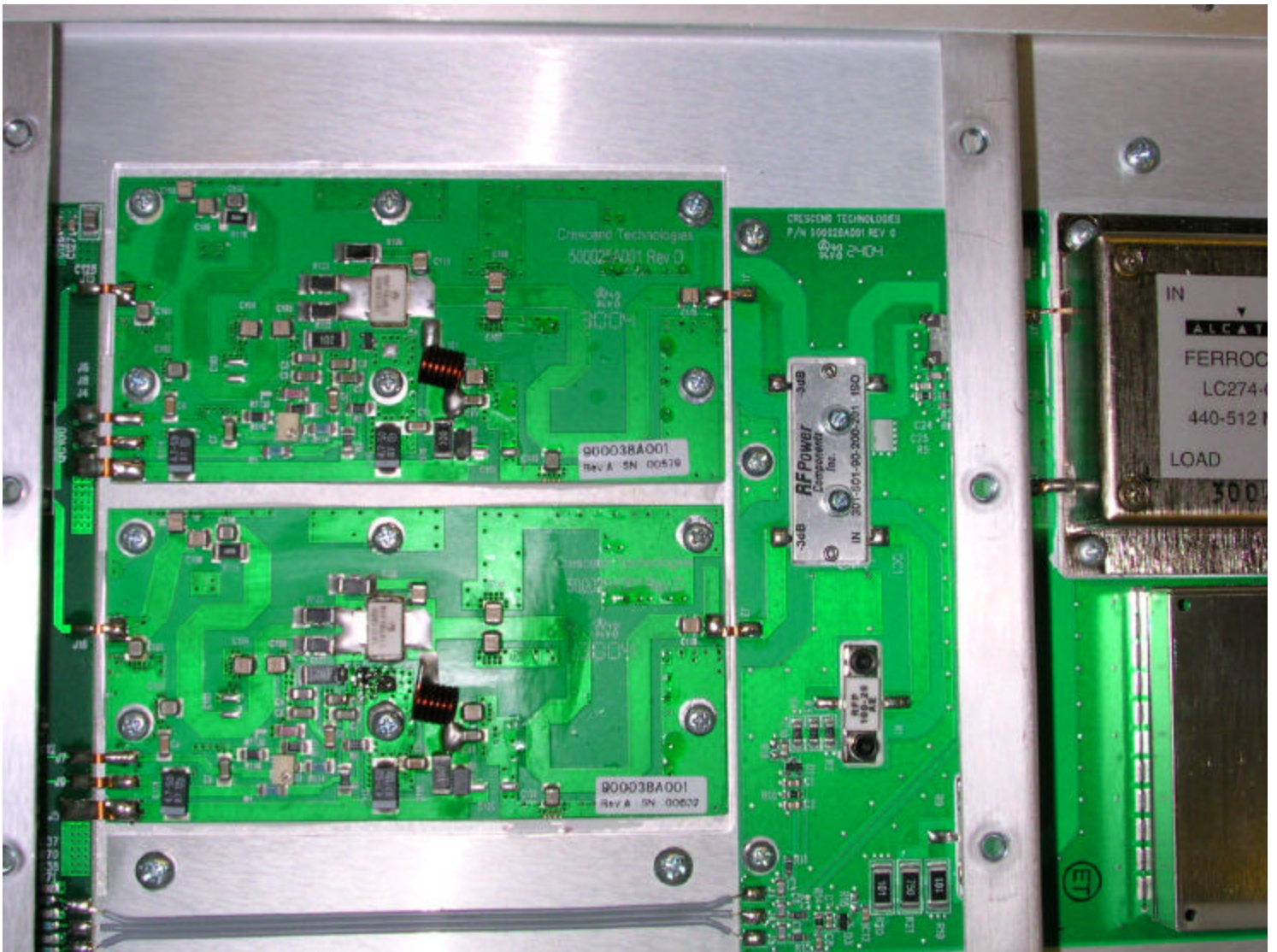


Power Amplifier (450-512 MHz) back



Power Amplifier (450-512 MHz) internal picture 1





Power Amplifier (450-512 MHz) internal picture 2



Power Amplifier (450-512 MHz) internal picture 3