

Table of Figures

Figure 1 - Rx IF overall.....	2
Figure 2 - Rx IF board top	3
Figure 3 - Rx IF board bottom	4



Figure 1 - Rx IF overall



Figure 2 - Rx IF board top

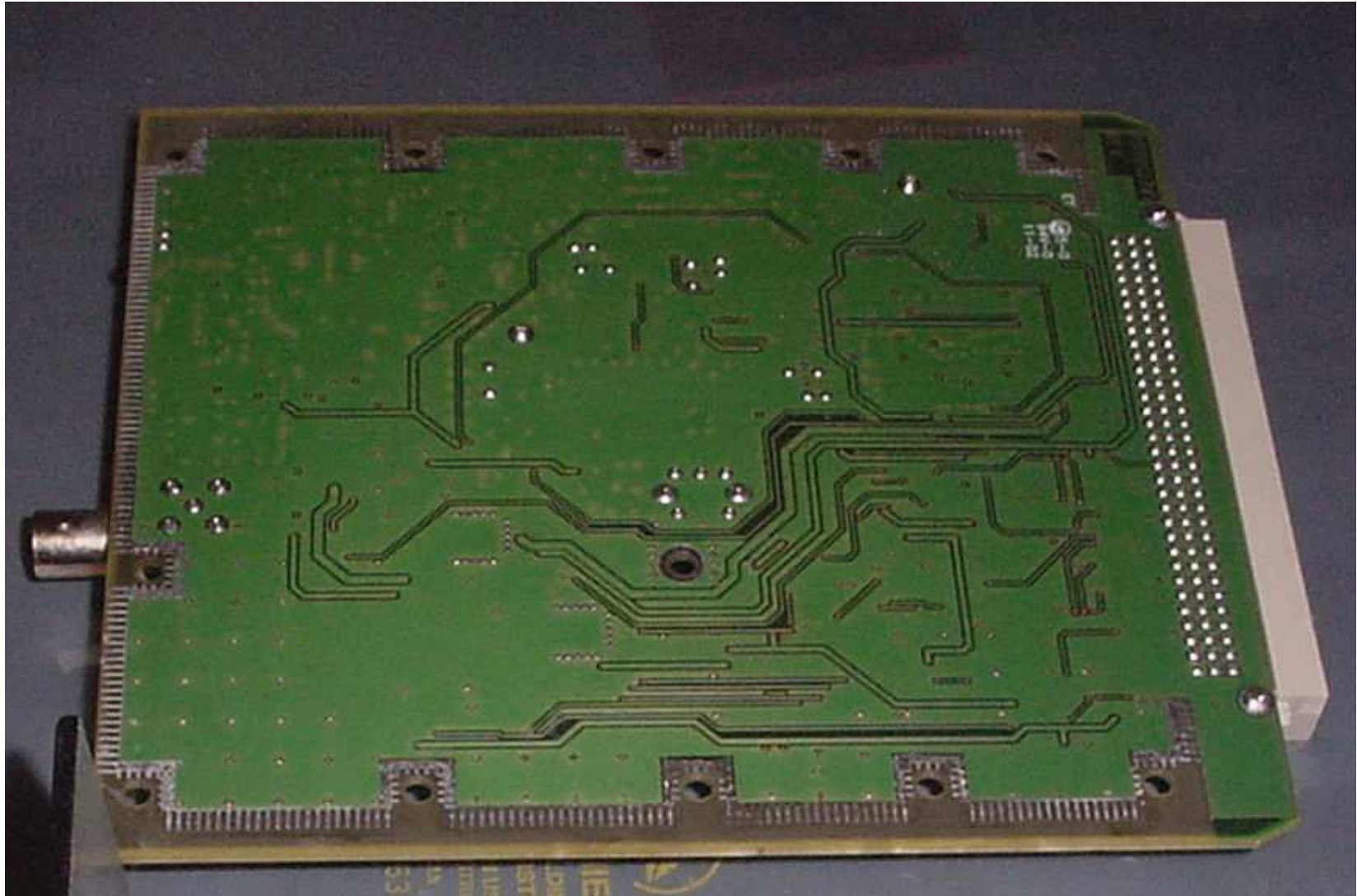


Figure 3 - Rx IF board bottom

Figure 1 Rx Front End module (top with cover)

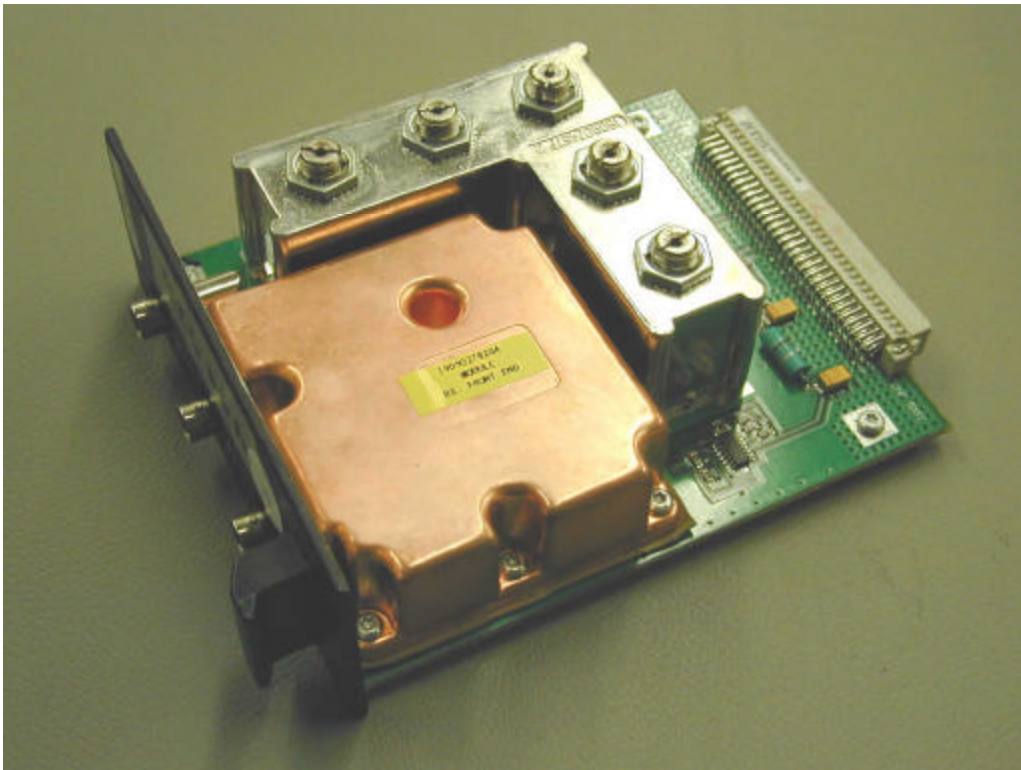


Figure 2 Rx Front End module (top without cover)

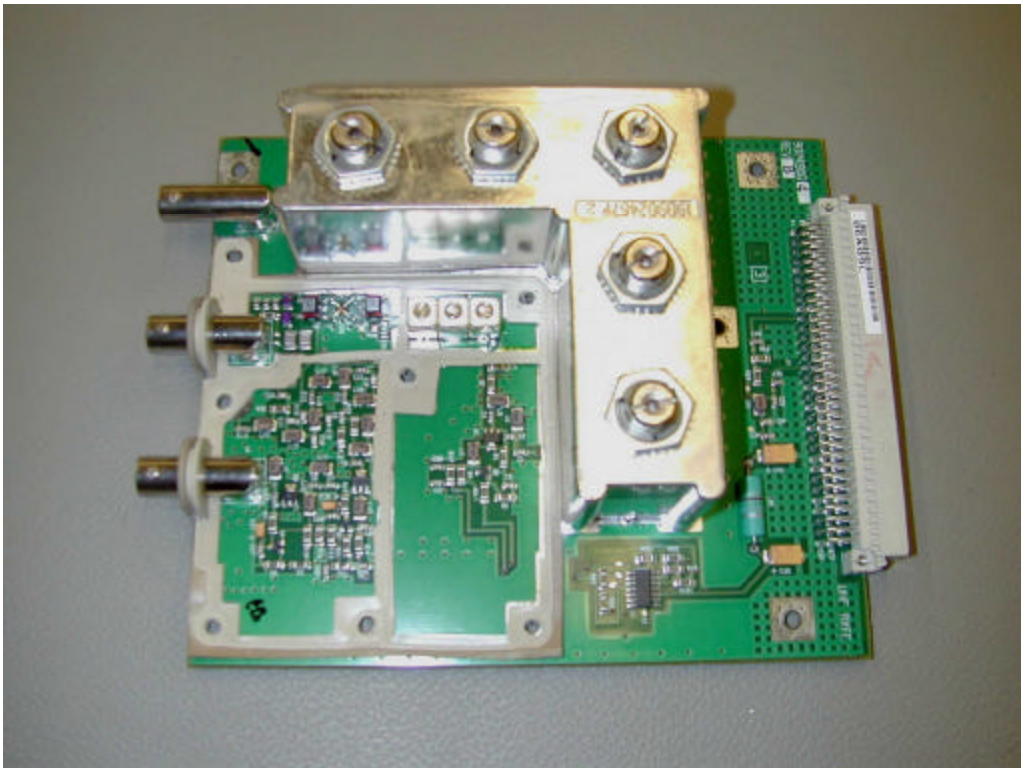


Figure 3 Rx Front End module (bottom with cover)

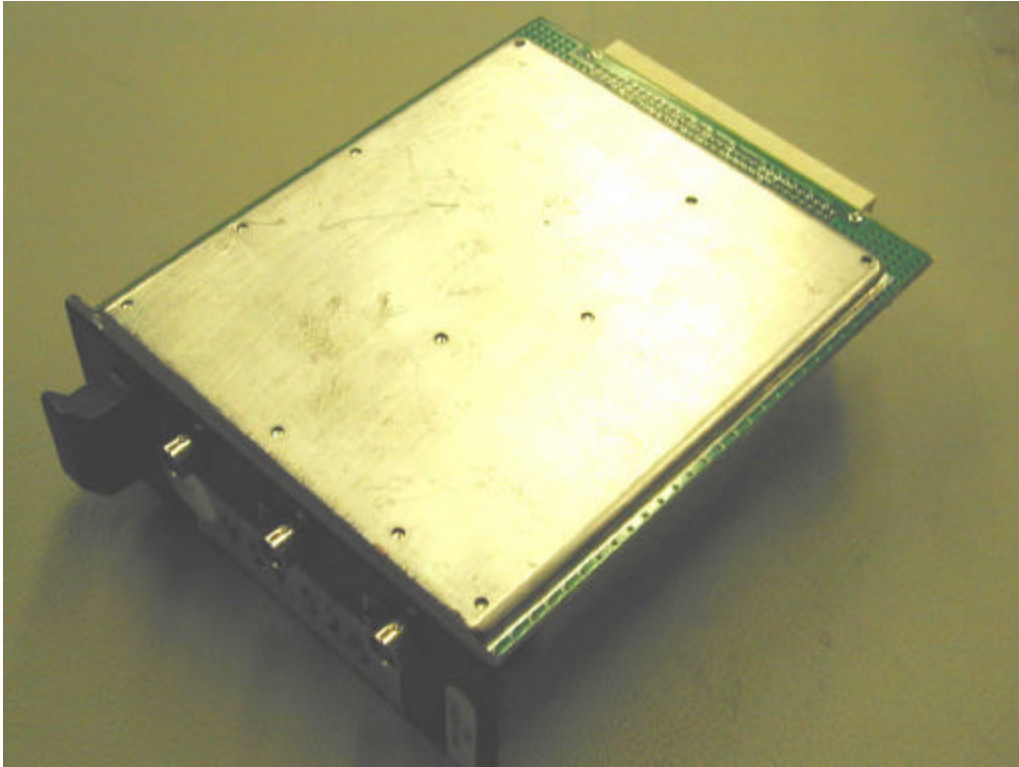
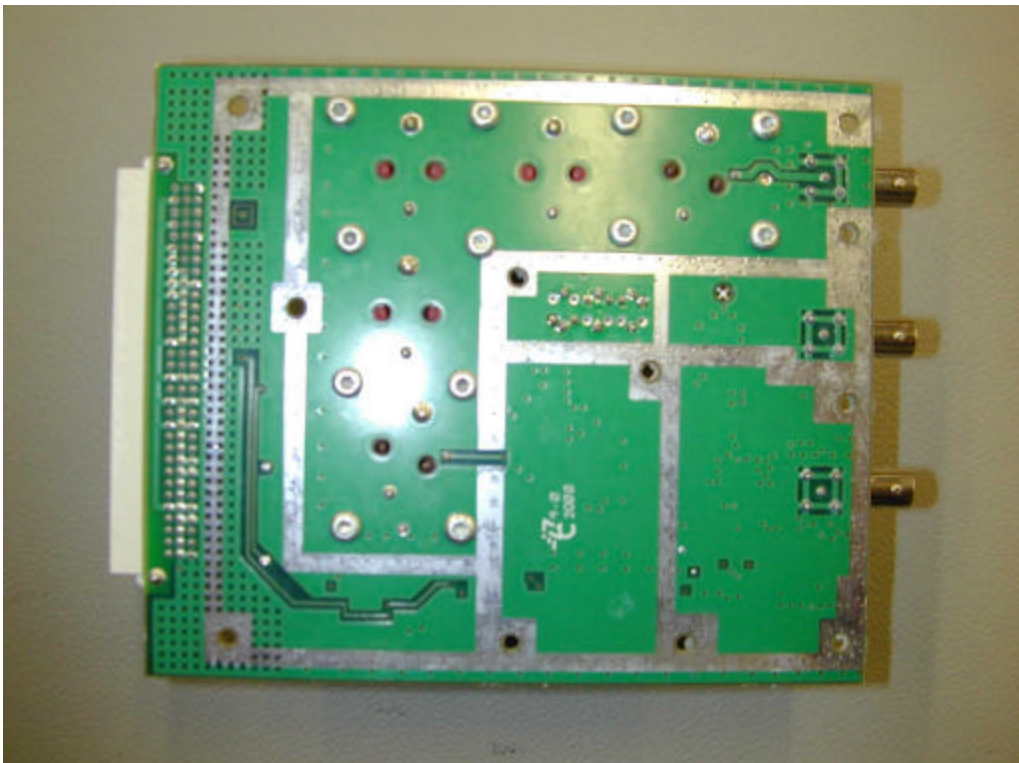


Figure 4 Rx Front End module (bottom without cover)

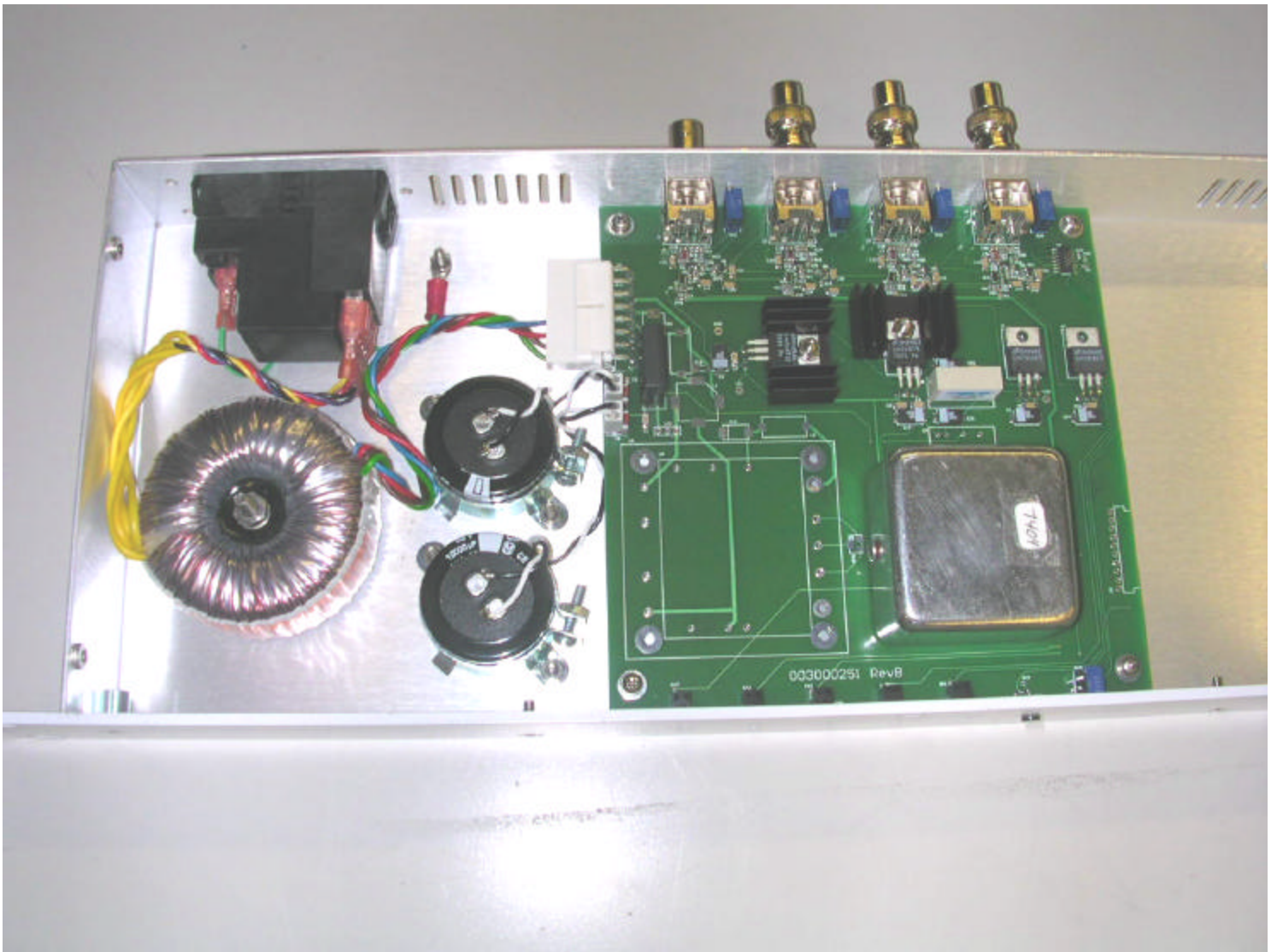




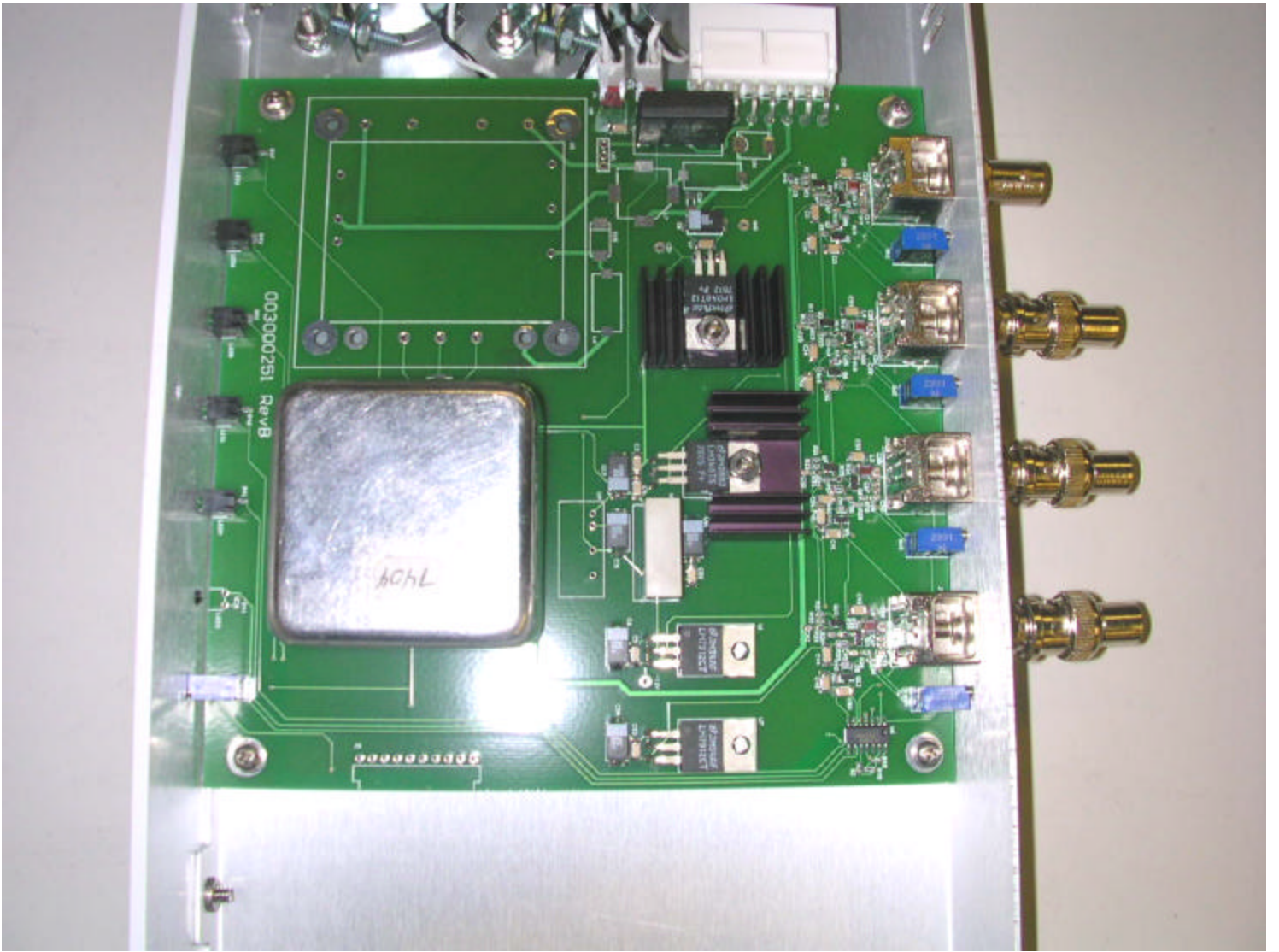
Brandywine 10 MHz frequency reference (front)



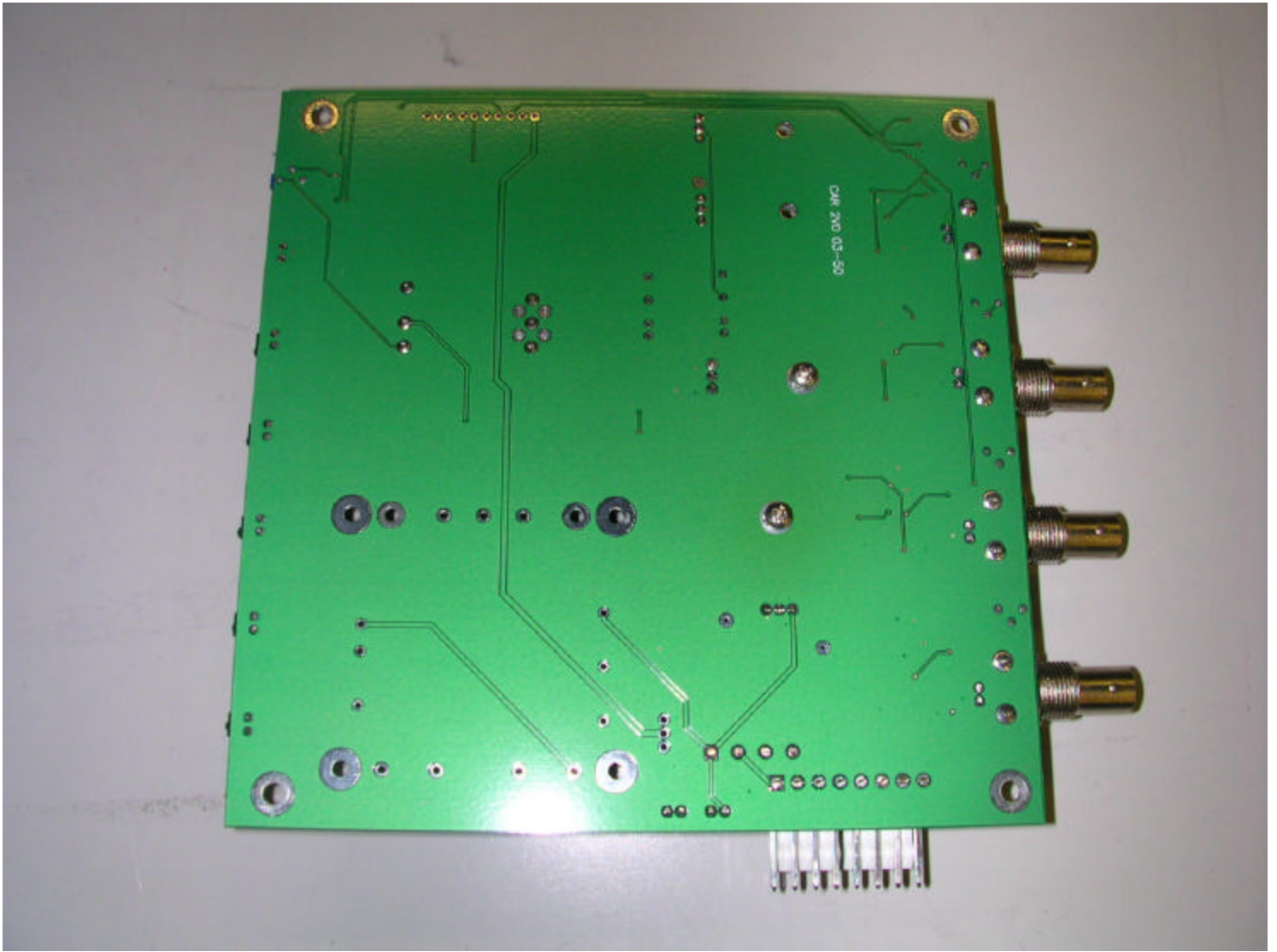
Brandywine 10 MHz frequency reference (back)



Brandywine 10 MHz frequency reference (open cover)



Brandywine 10 MHz frequency reference PCB (component side)



Brandywine 10 MHz frequency reference PCB (secondary side)