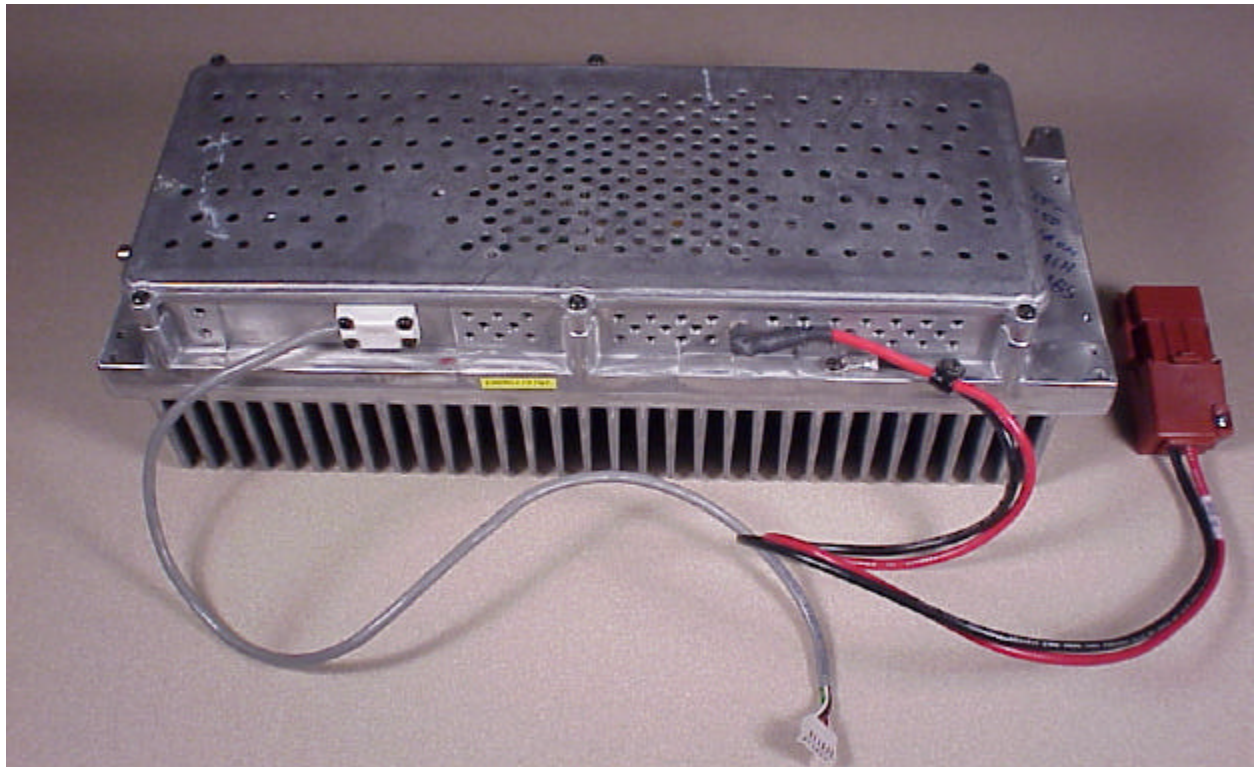


**Figure 17 - Tx Synthesizer disassembled**



**Figure 18 - PA overall**

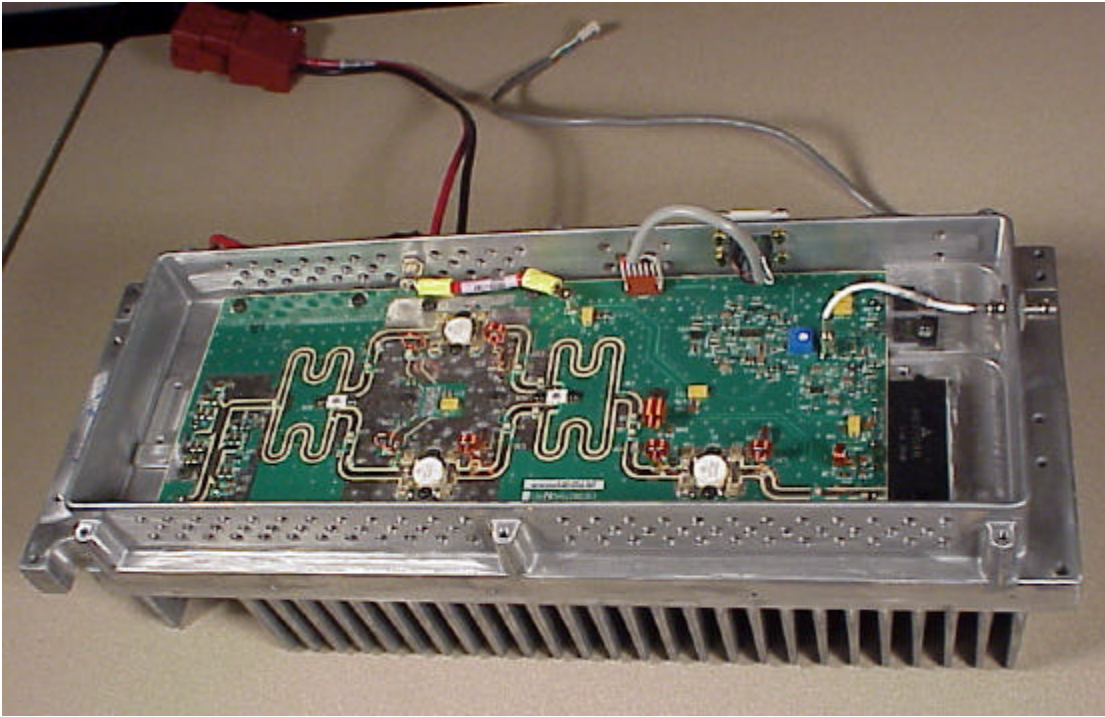


Figure 19 - PA with cover removed

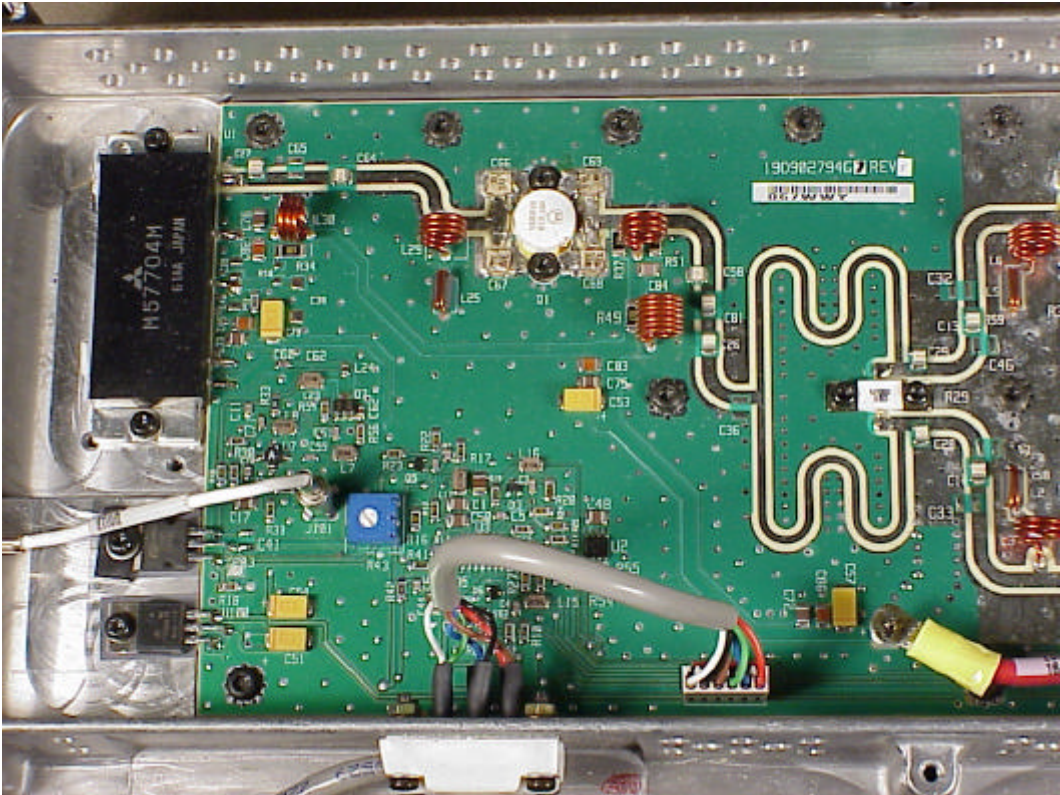


Figure 20 - PA board top, input end

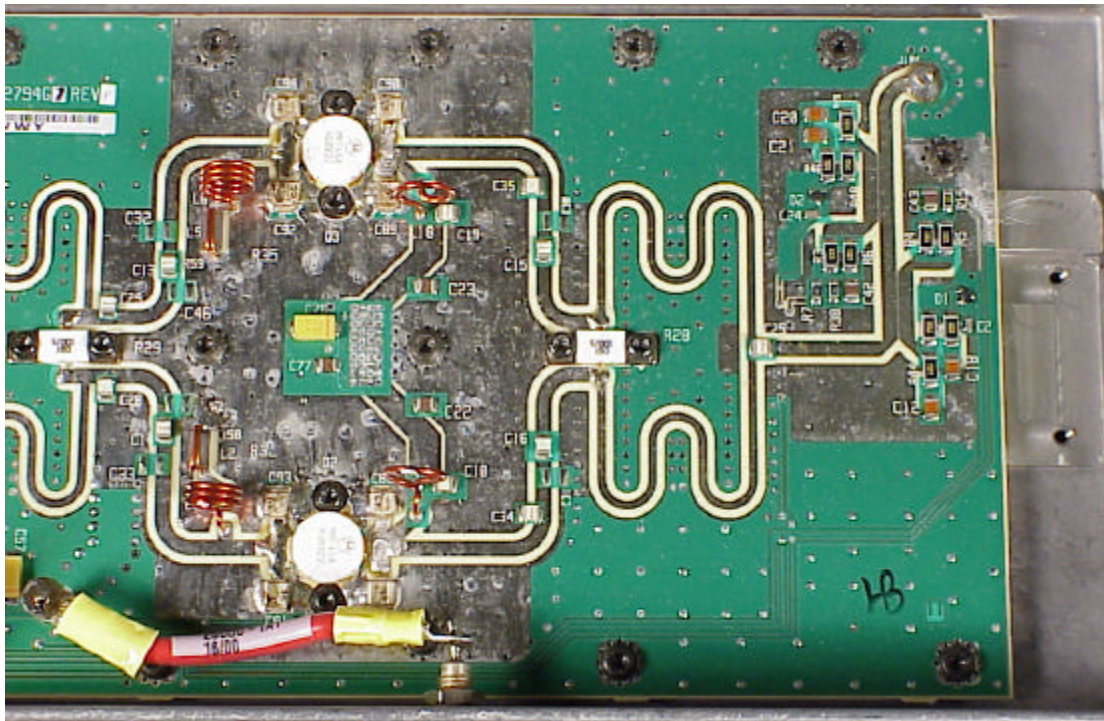


Figure 21 - PA board top, output end

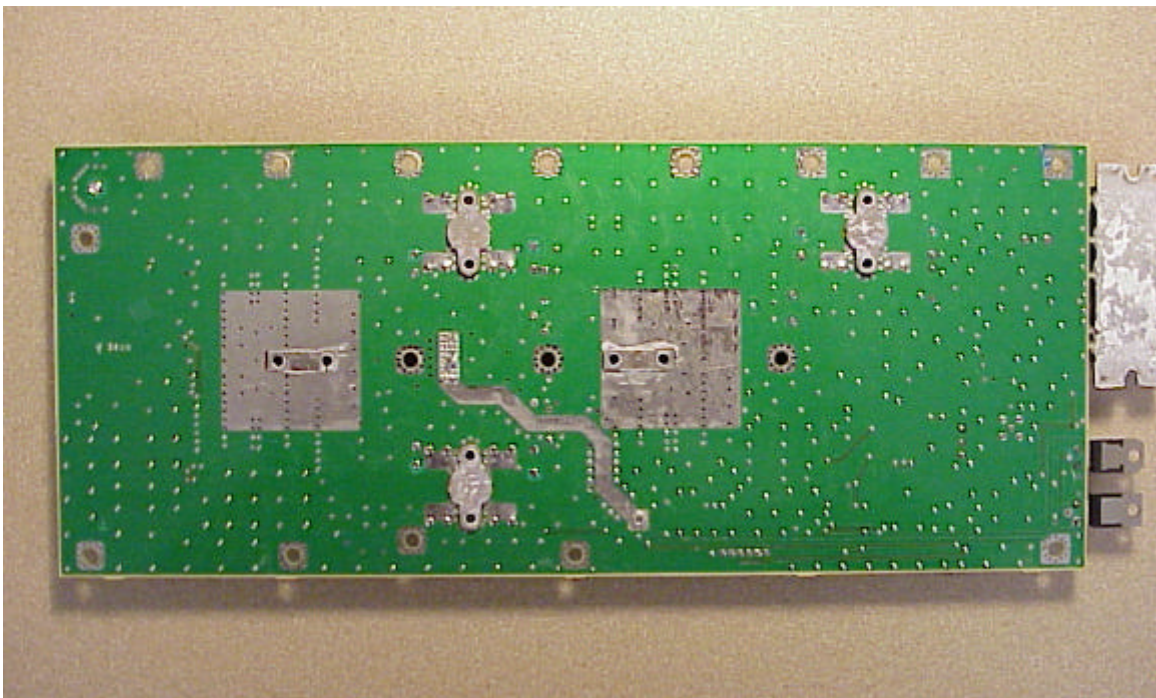


Figure 22 - PA board bottom

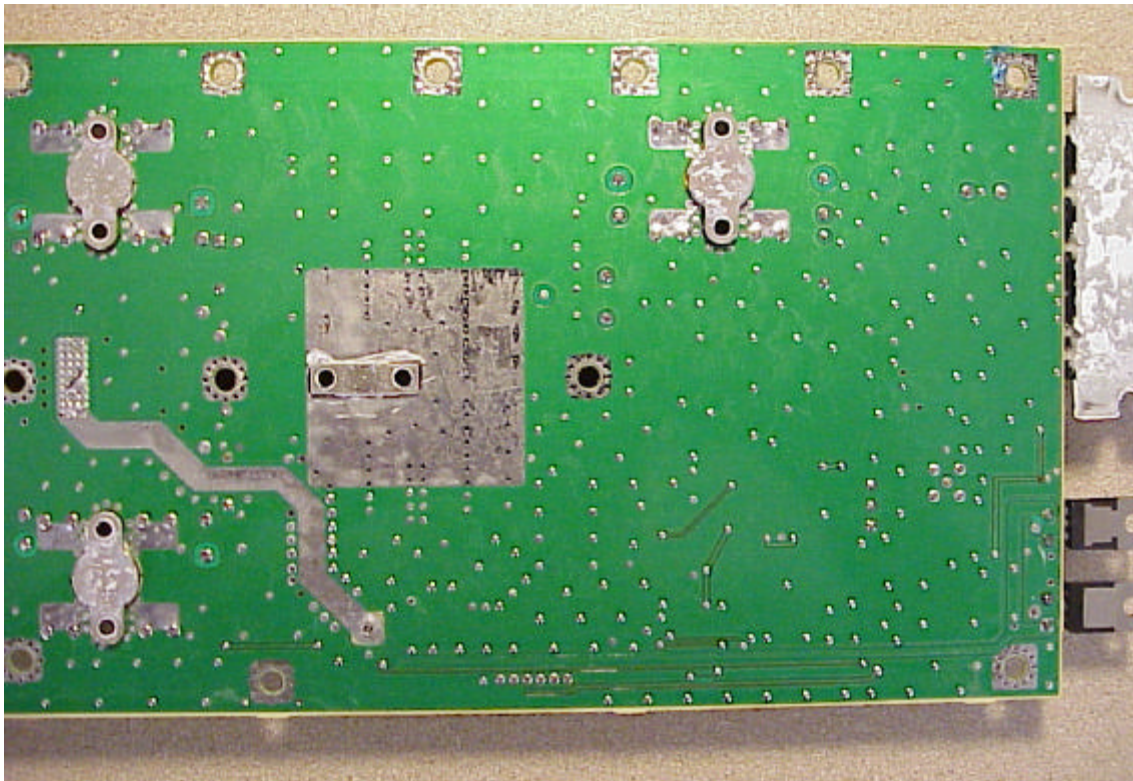


Figure 23 - PA board bottom - input end

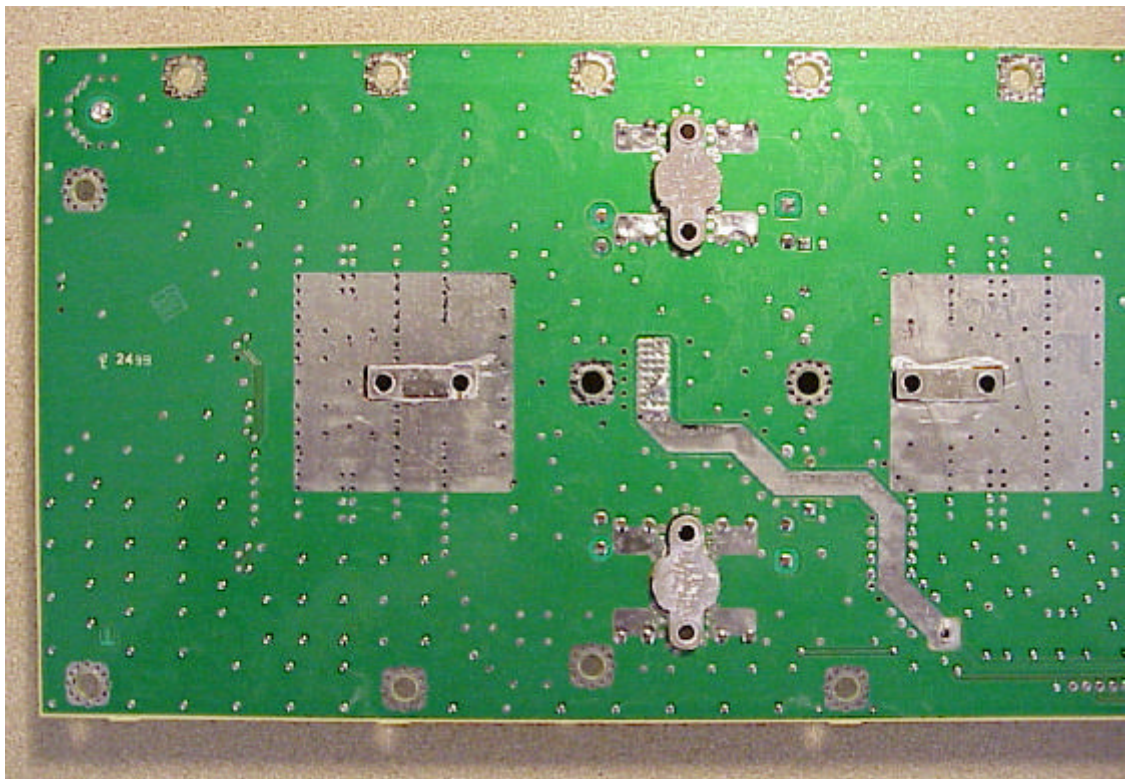


Figure 24 - PA board bottom - output end

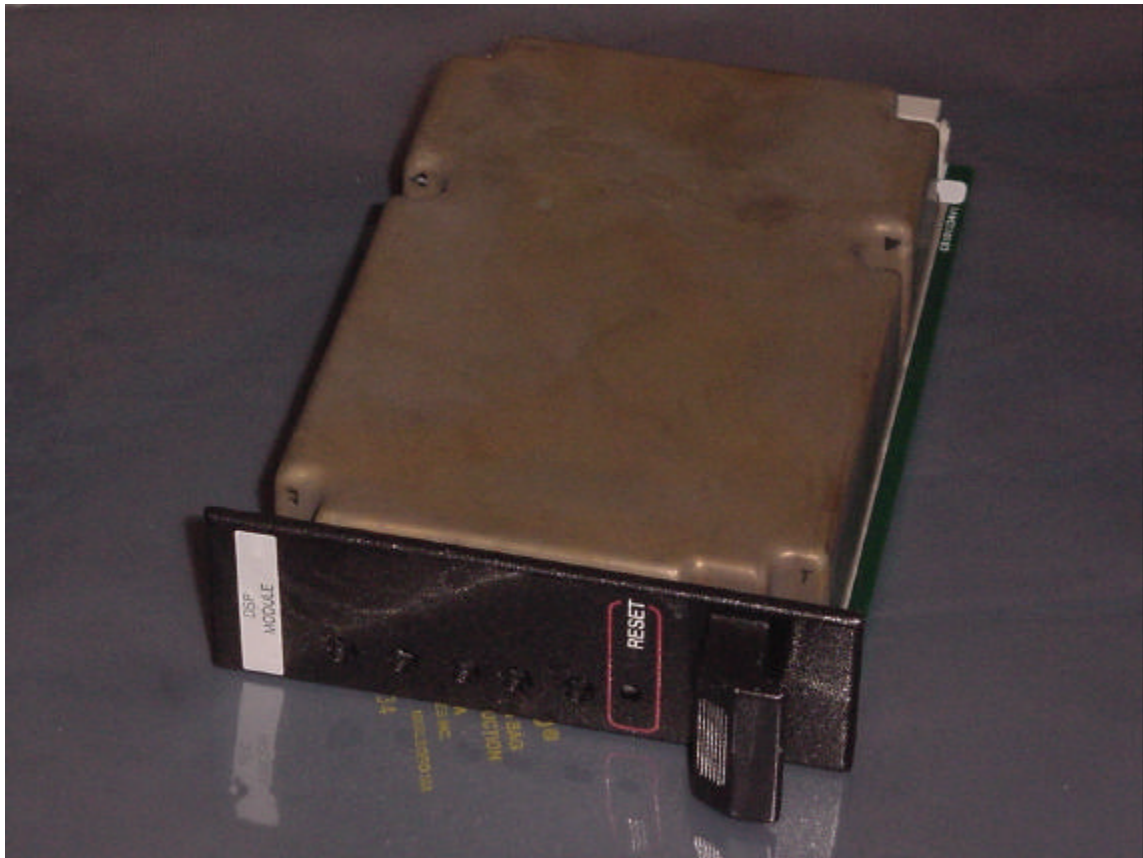


Figure 25 - Power Module overall

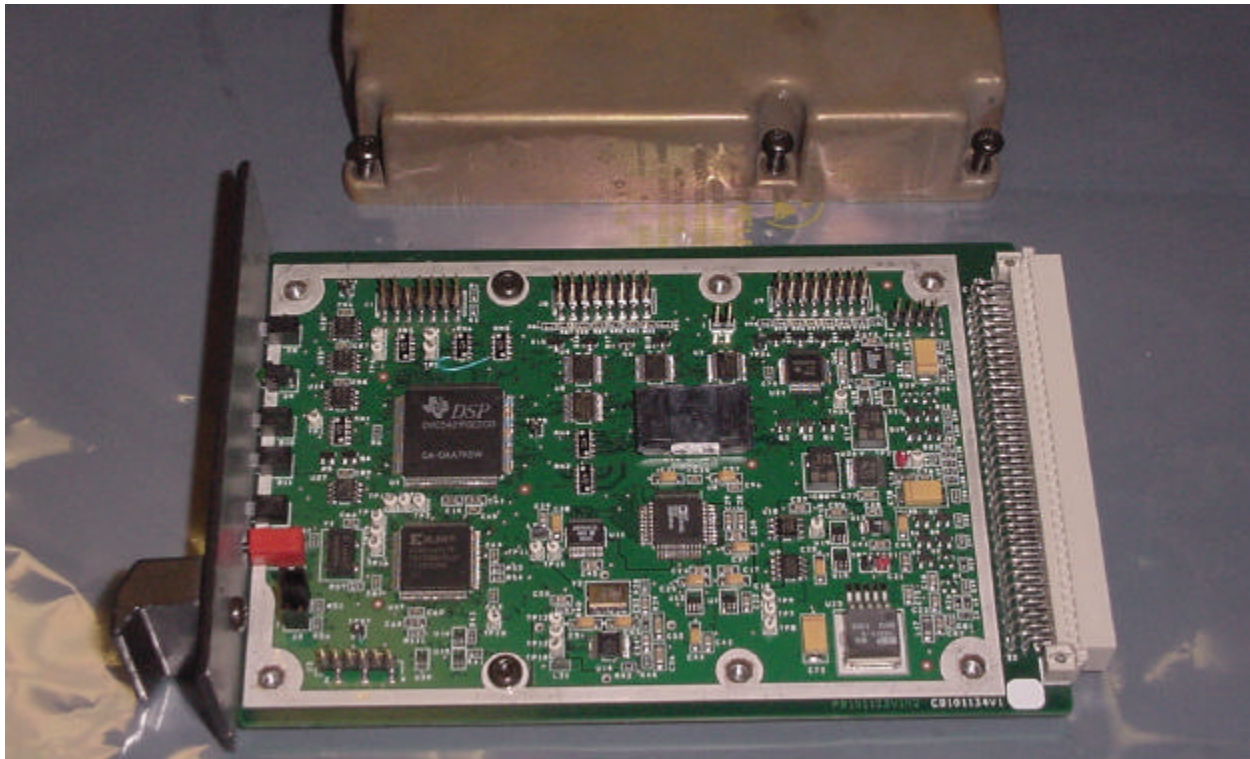


Figure 26 - Power Module board top

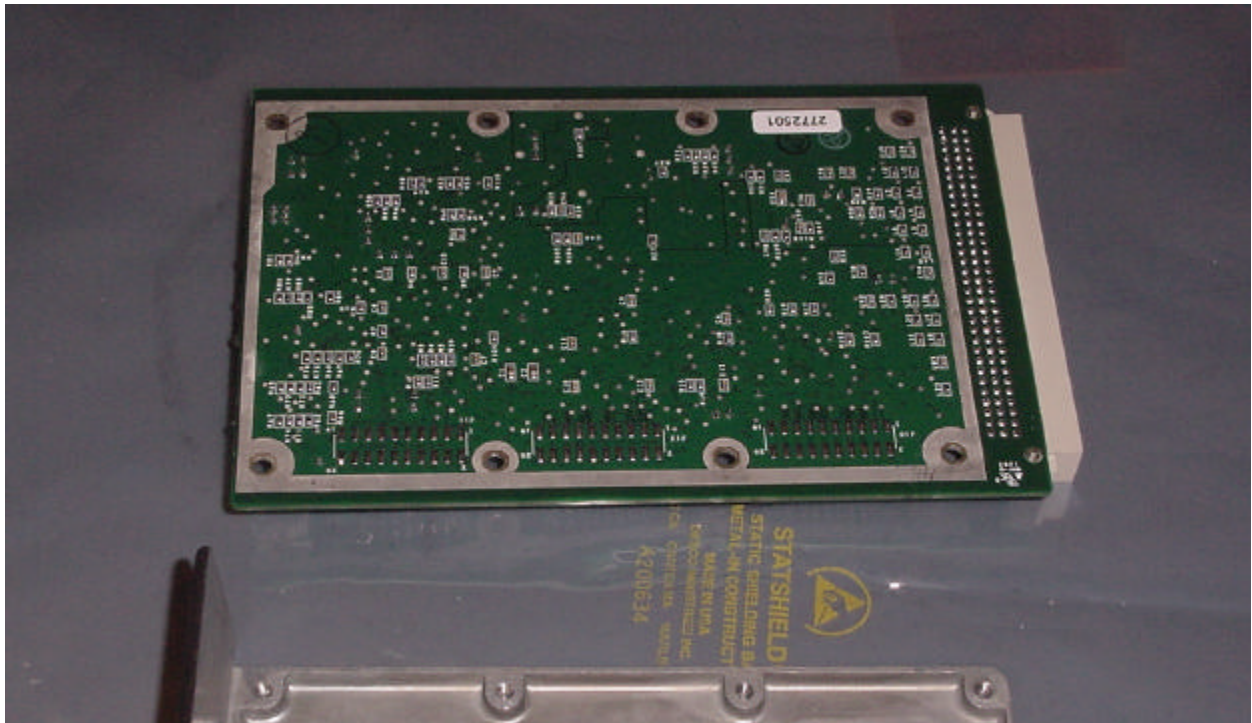


Figure 27 - Power Module board bottom

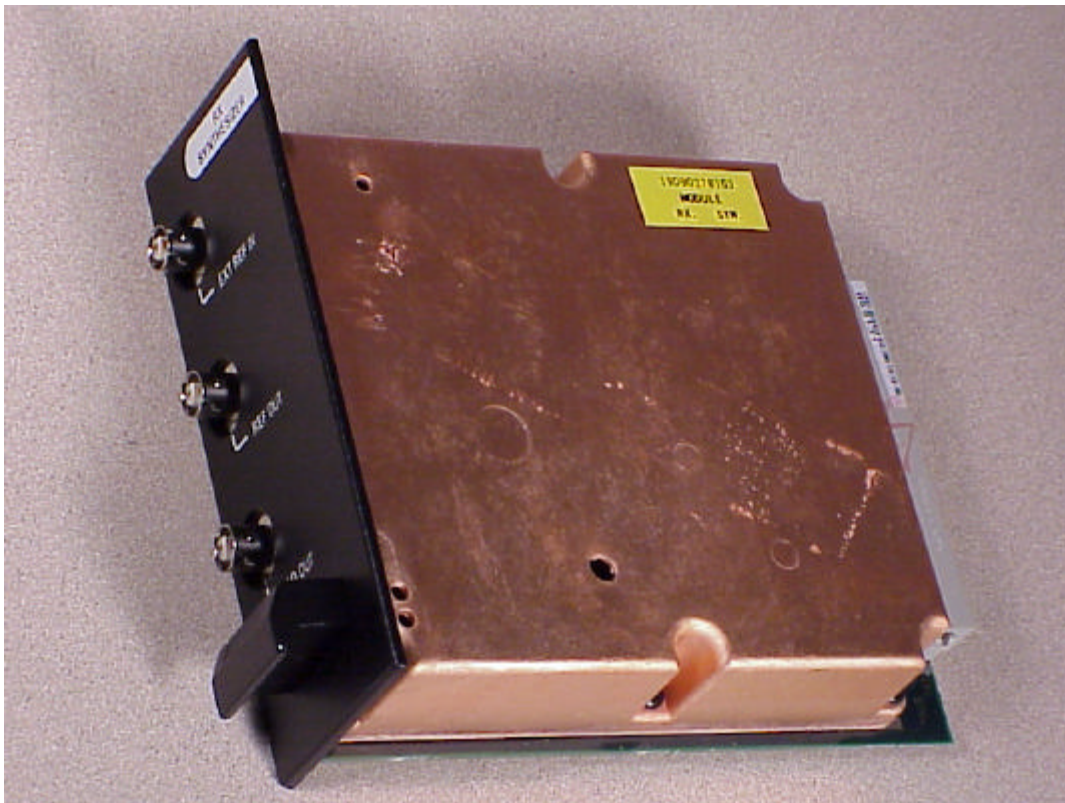


Figure 28 - Rx Synthesizer overall

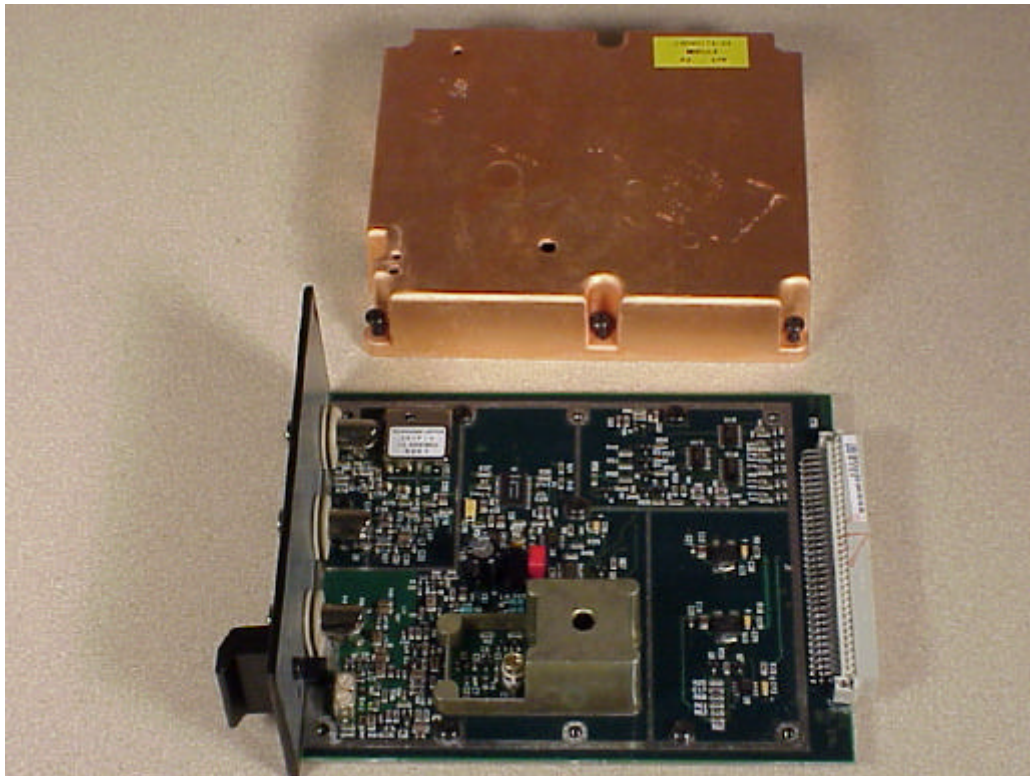


Figure 29 - Rx Synthesizer cover removed

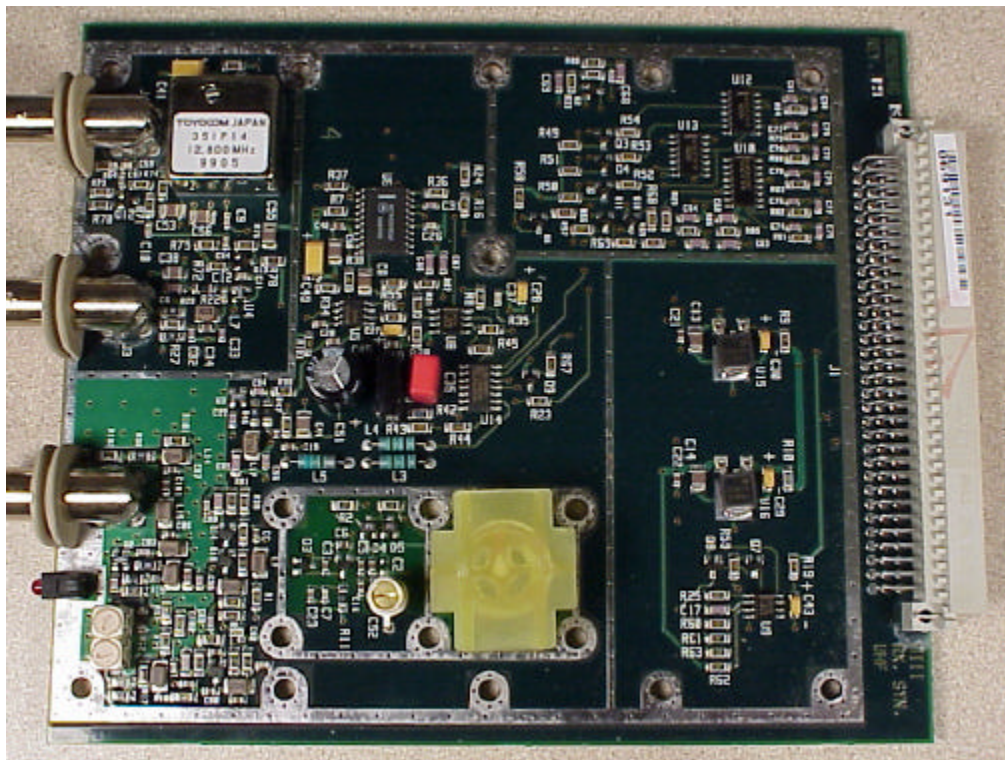


Figure 30 - Rx Synthesizer board top

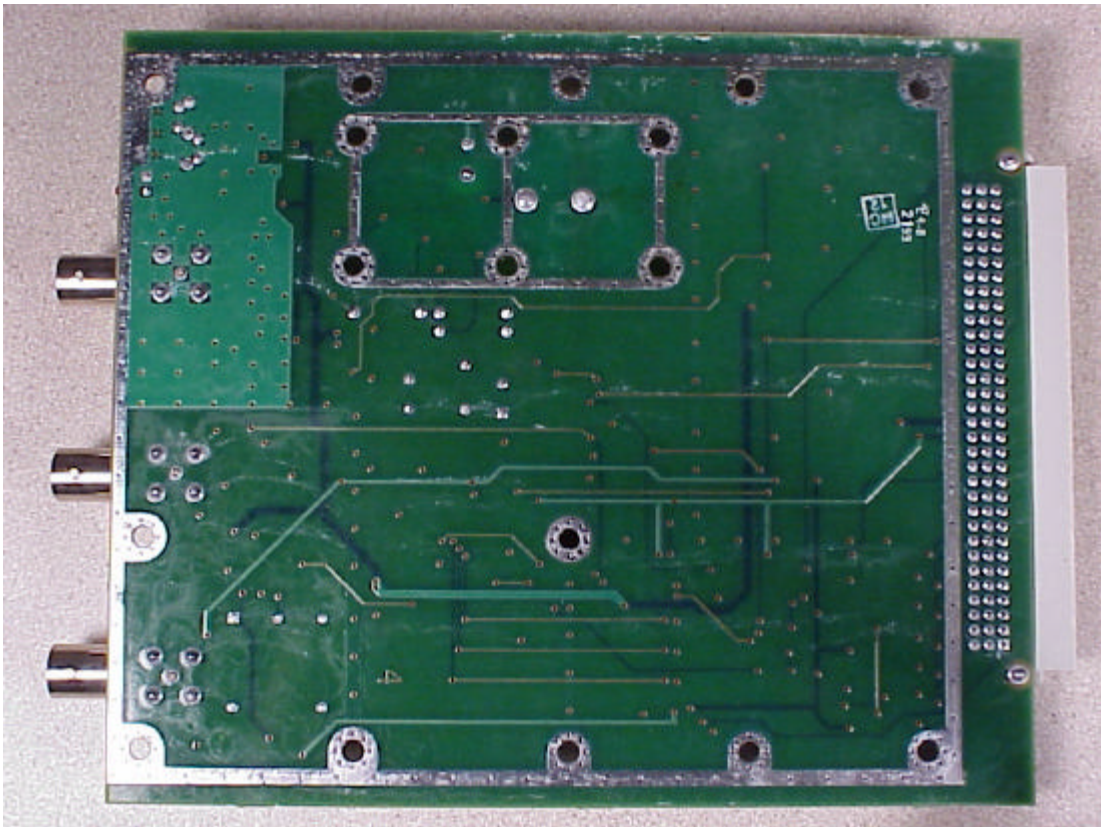


Figure 31 - Rx Synthesizer board bottom

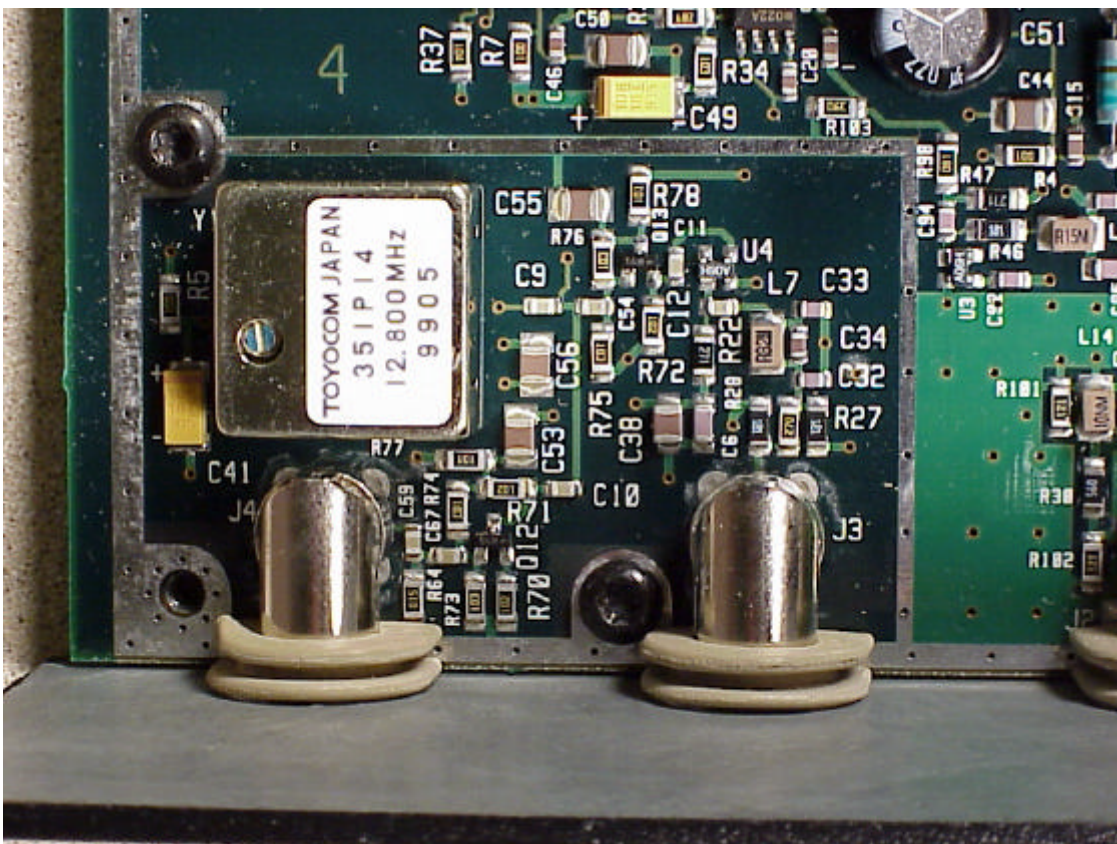


Figure 32 - Rx Synthesizer frequency reference

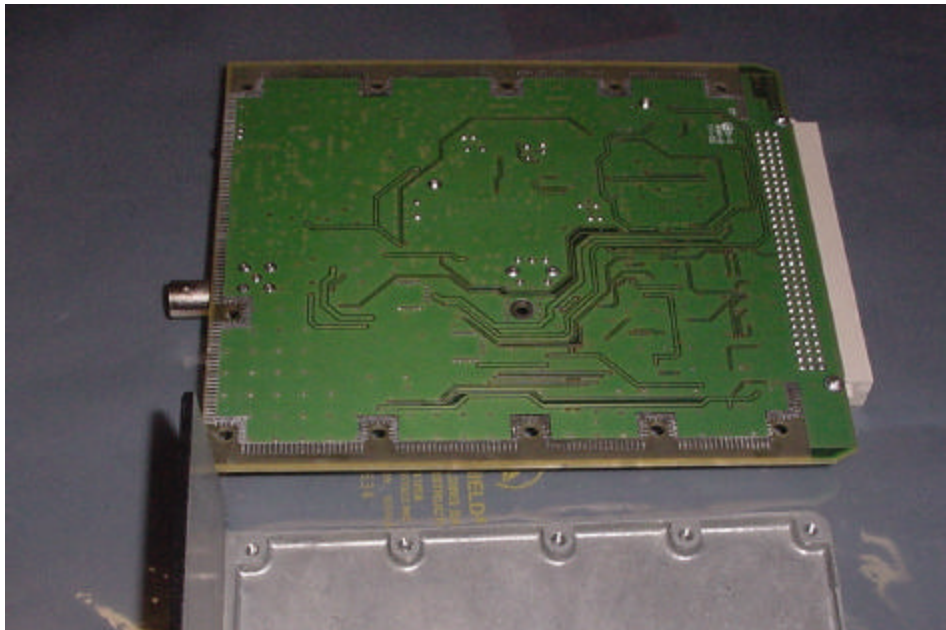




**Figure 33 - Rx IF overall**



**Figure 34 - Rx IF board top**



**Figure 35 - Rx IF board bottom**