

APPENDIX K: INTERNAL PHOTOGRAPHS

Please refer to the following pages.

Interior Photographs of Mastr III / SitePro Trunking Base Station Radio

FCC ID: OWDTR-0026-E

June 23, 2003

Table of Figures

Figure 1 - Backplane Top	3
Figure 2 - Backplane Board Bottom.....	3
Figure 3 - Interface Board Top.....	4
Figure 4 - Interface Board Bottom	4
Figure 5 - System Module Overall	5
Figure 6 - System Module, cover removed.....	5
Figure 7 - System Module, main board top.....	6
Figure 8 - System Module, main board bottom.....	6
Figure 9 - System Module - DSP Board top.....	7
Figure 10 - System Module - DSP Board bottom.....	7
Figure 11 - Tx Synthesizer overall	8
Figure 12 - Tx Synthesizer - cover removed.....	8
Figure 13 - Tx Synthesizer board top	9
Figure 14 - Tx Synthesizer board bottom.....	9
Figure 15 - Tx Synthesizer VCO top.....	10
Figure 16 - Tx Synthesizer VCO bottom	10
Figure 17 - Tx Synthesizer disassembled.....	11
Figure 18 - PA overall.....	11
Figure 19 - PA with cover removed	12
Figure 20 - PA board top, input end.....	12
Figure 21 - PA board top, output end	13
Figure 22 - PA board bottom	13
Figure 23 - PA board bottom - input end.....	14
Figure 24 - PA board bottom - output end	14
Figure 25 - Power Module overall.....	15
Figure 26 - Power Module board top	15
Figure 27 - Power Module board bottom	16
Figure 28 - Rx Synthesizer overall.....	16
Figure 29 - Rx Synthesizer cover removed.....	17
Figure 30 - Rx Synthesizer board top	17
Figure 31 - Rx Synthesizer board bottom	18
Figure 32 - Rx Synthesizer frequency reference	18
Figure 33 - Rx IF overall	19
Figure 34 - Rx IF board top.....	19
Figure 35 - Rx IF board bottom.....	20

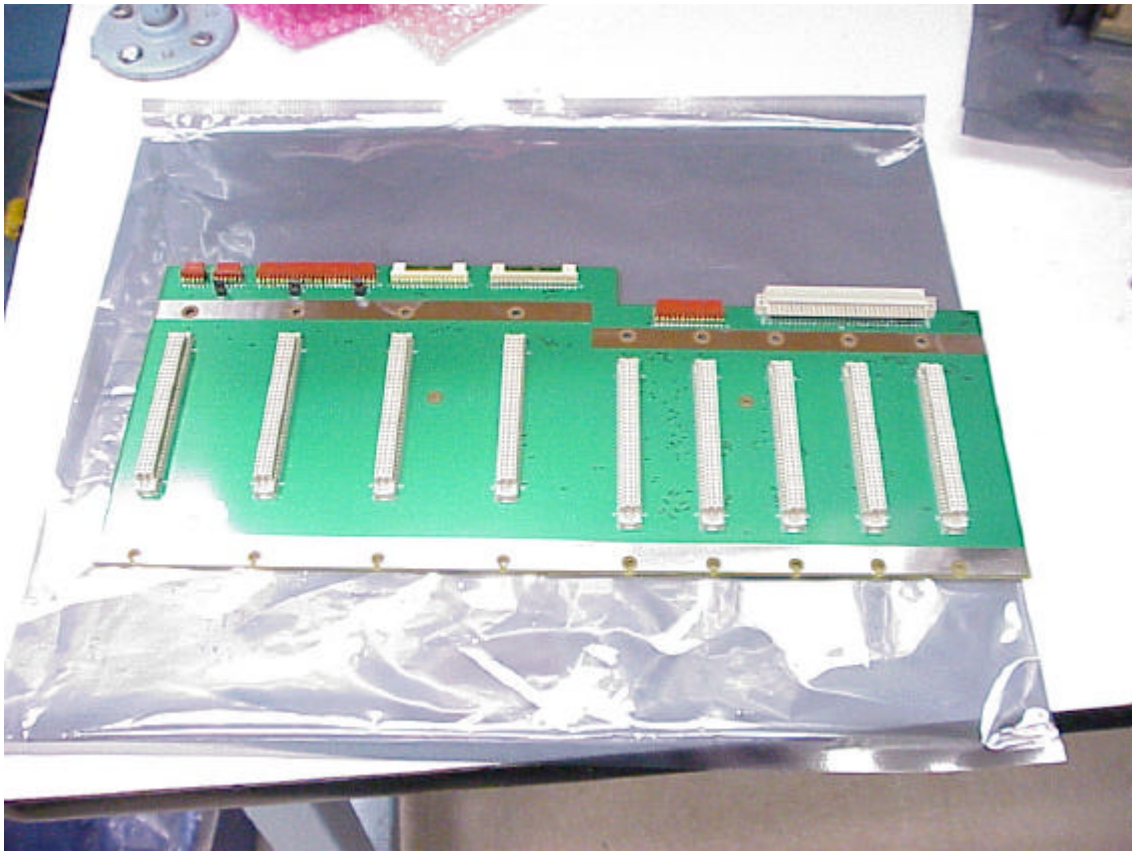


Figure 1 - Backplane Top

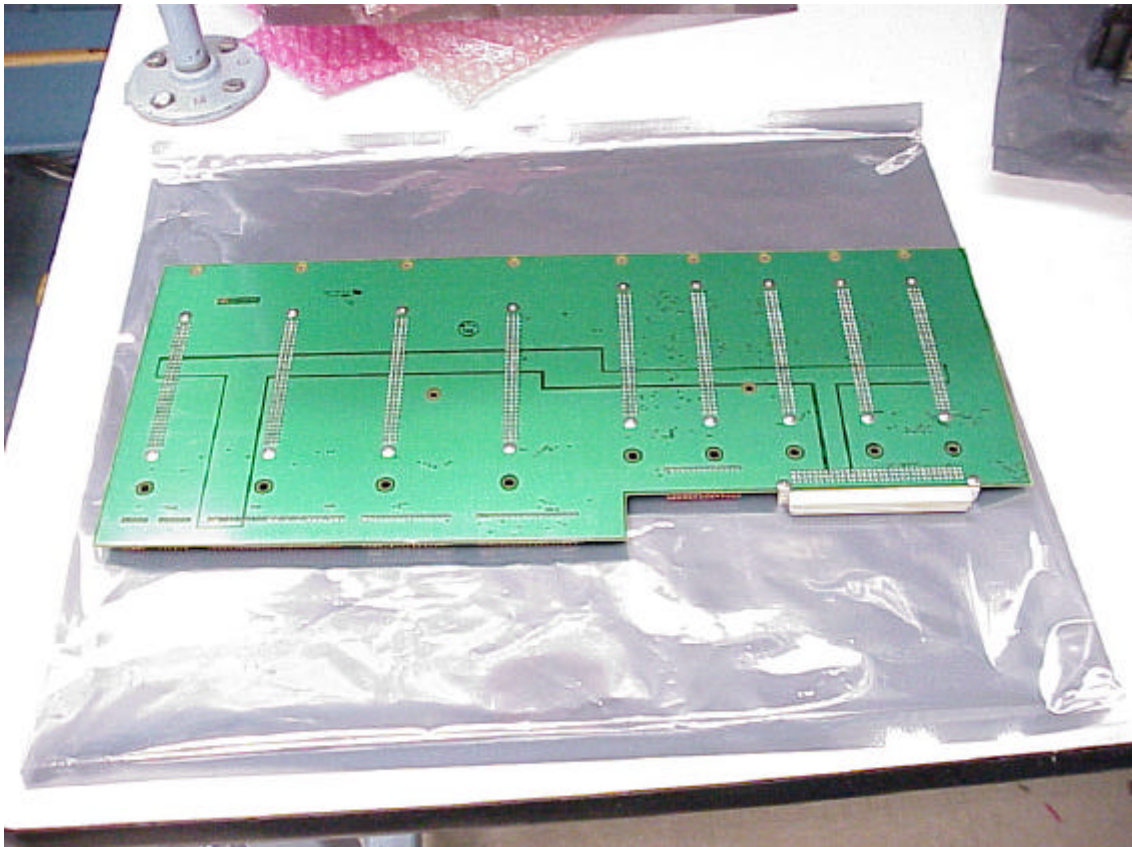


Figure 2 - Backplane Board Bottom

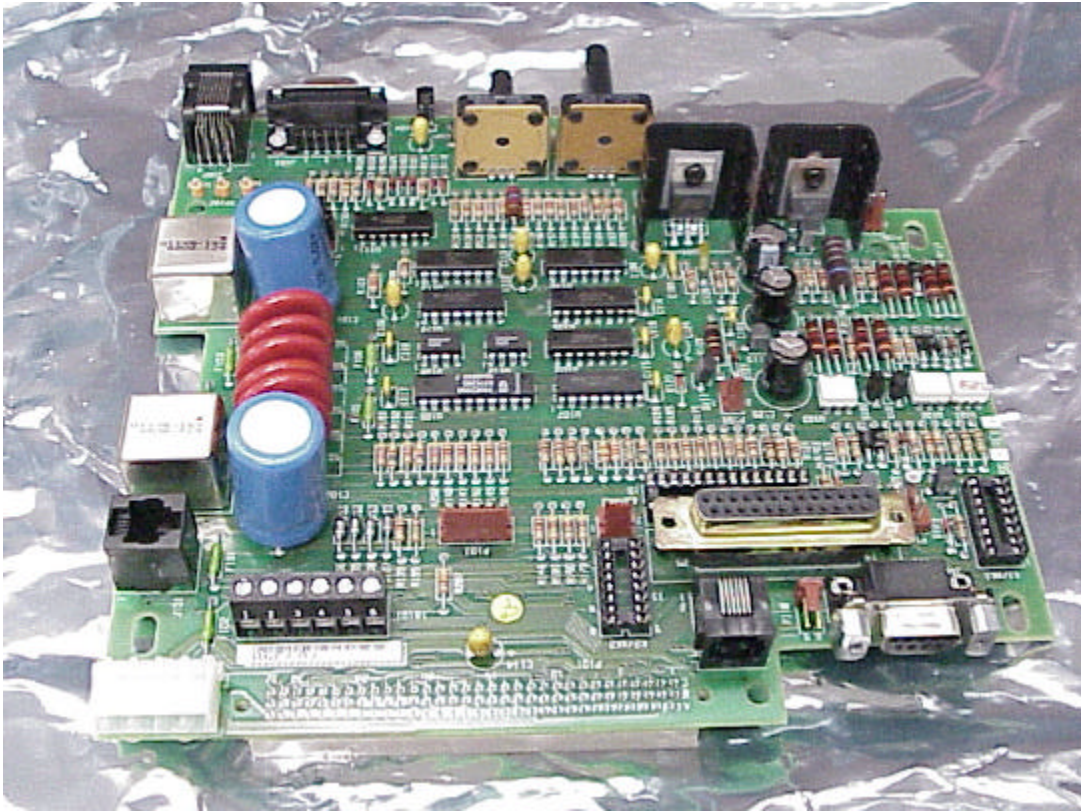


Figure 3 - Interface Board Top

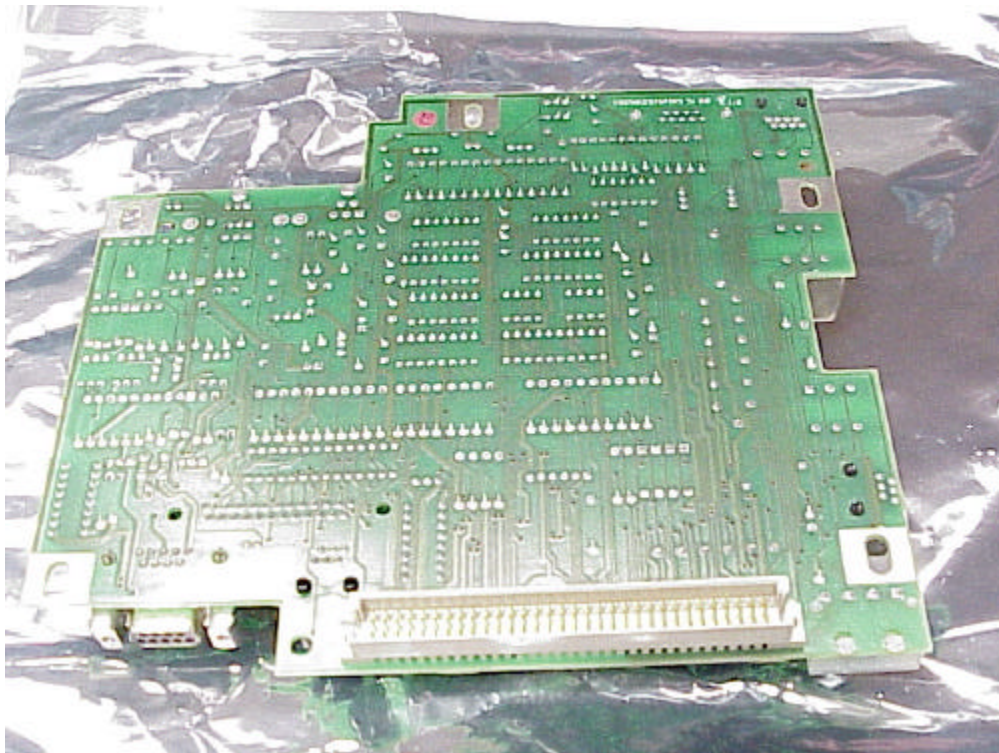


Figure 4 - Interface Board Bottom



Figure 5 - System Module Overall

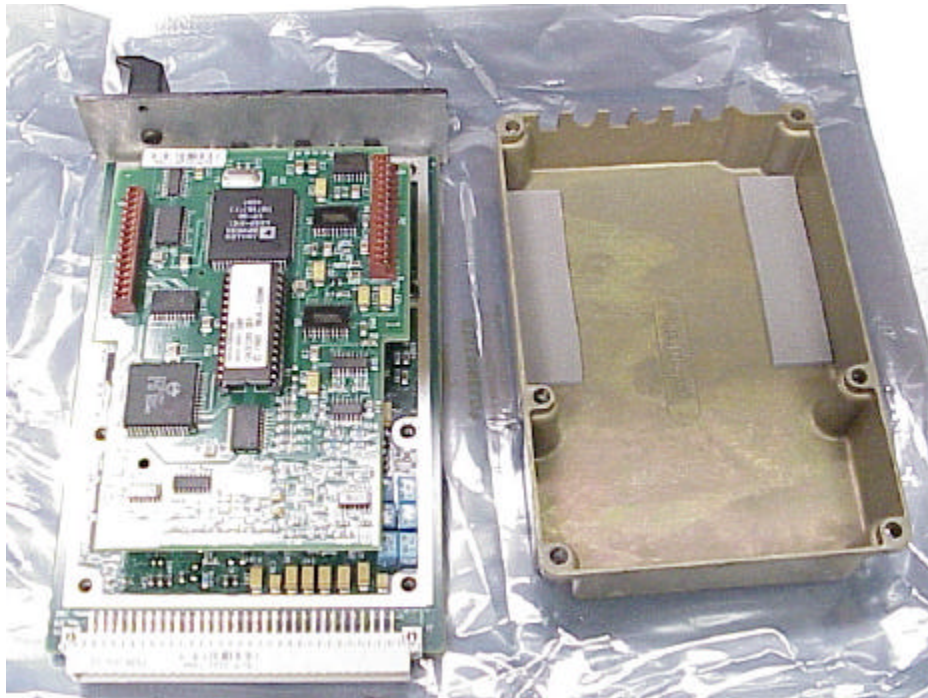


Figure 6 - System Module, cover removed

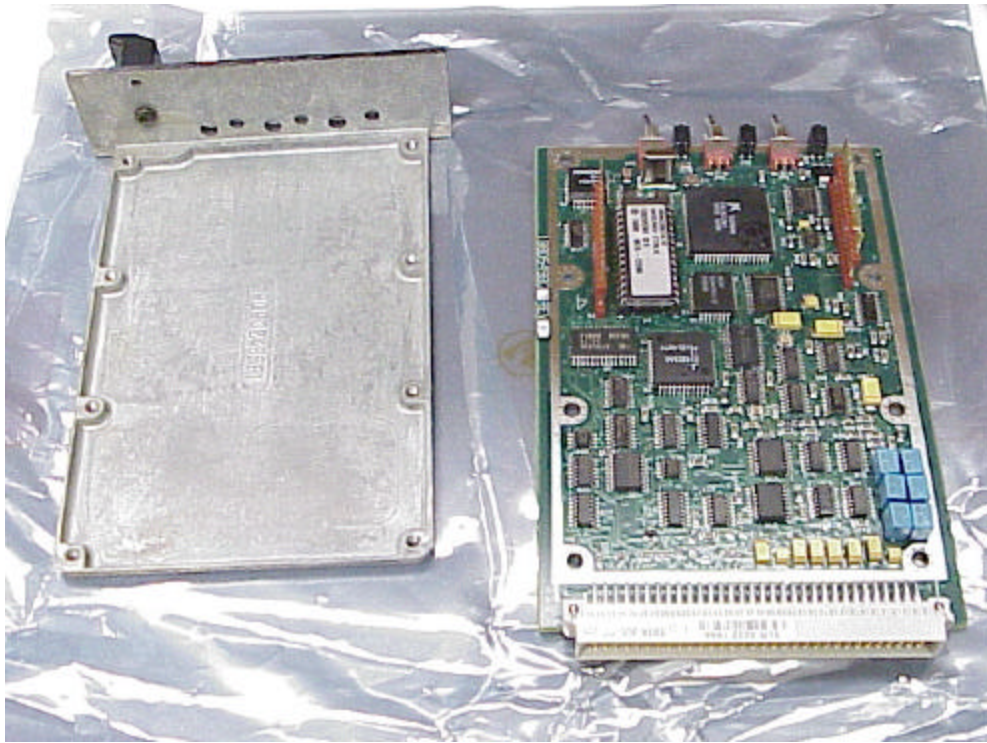


Figure 7 - System Module, main board top

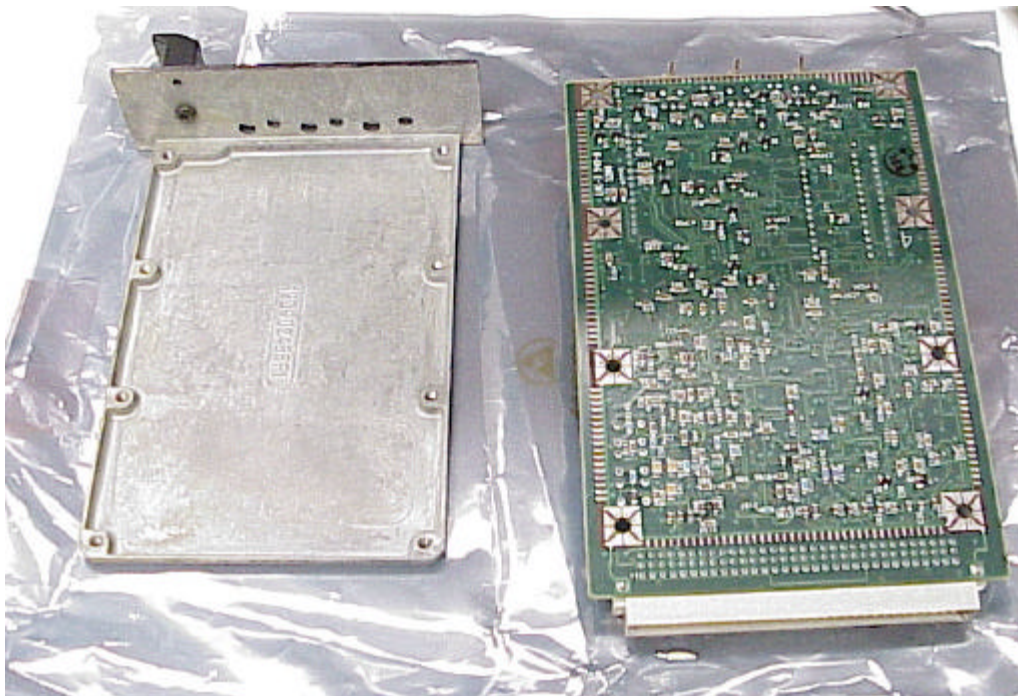


Figure 8 - System Module, main board bottom

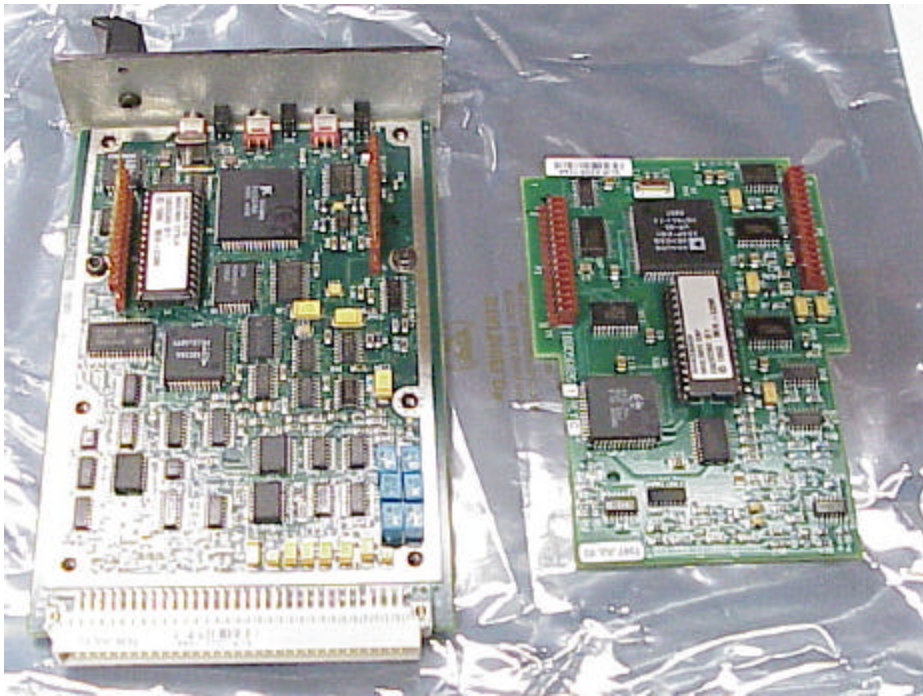


Figure 9 - System Module - DSP Board top

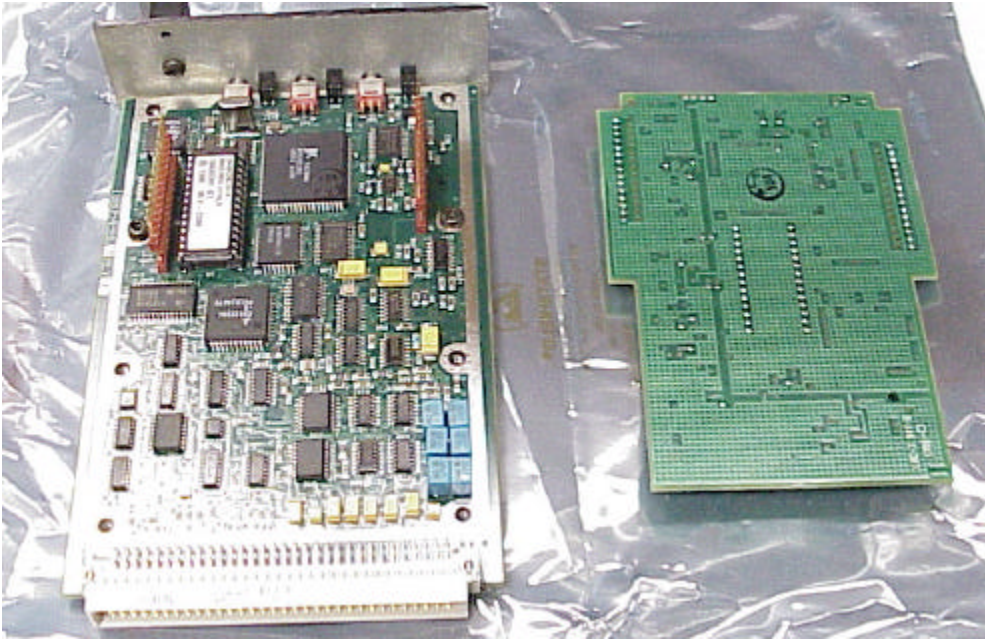


Figure 10 - System Module - DSP Board bottom

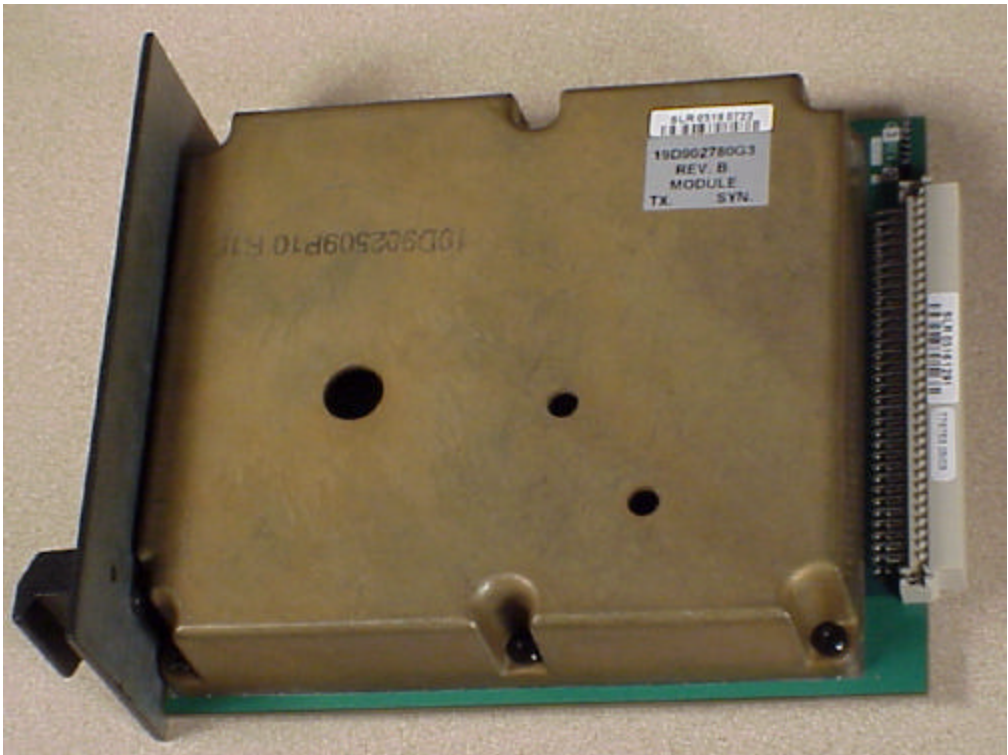


Figure 11 - Tx Synthesizer overall

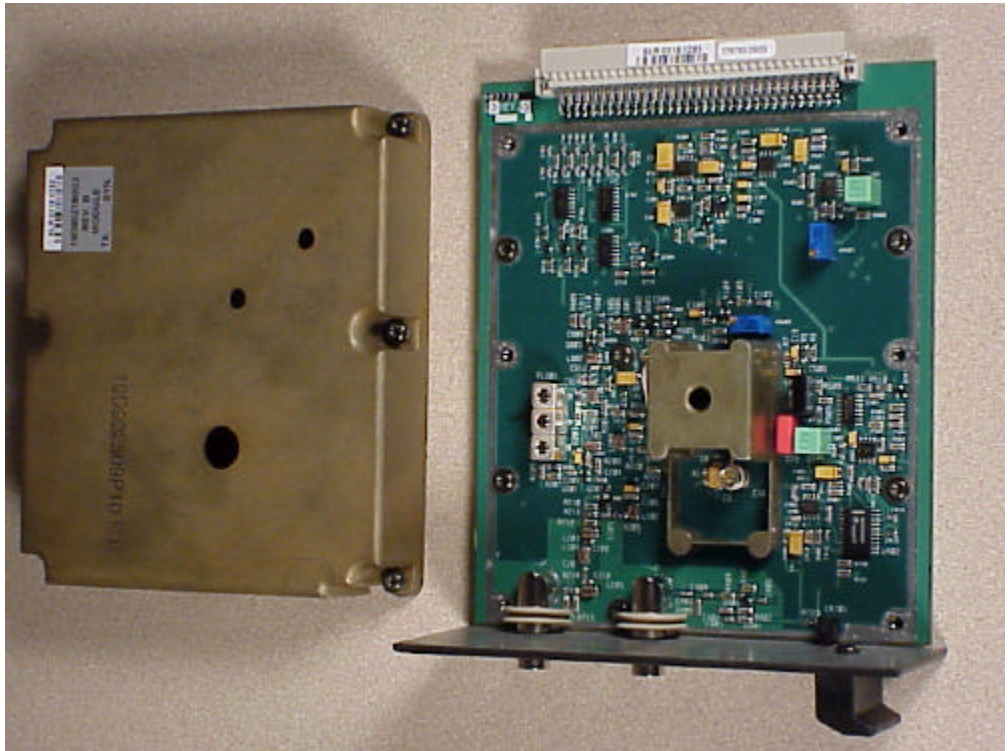


Figure 12 - Tx Synthesizer - cover removed

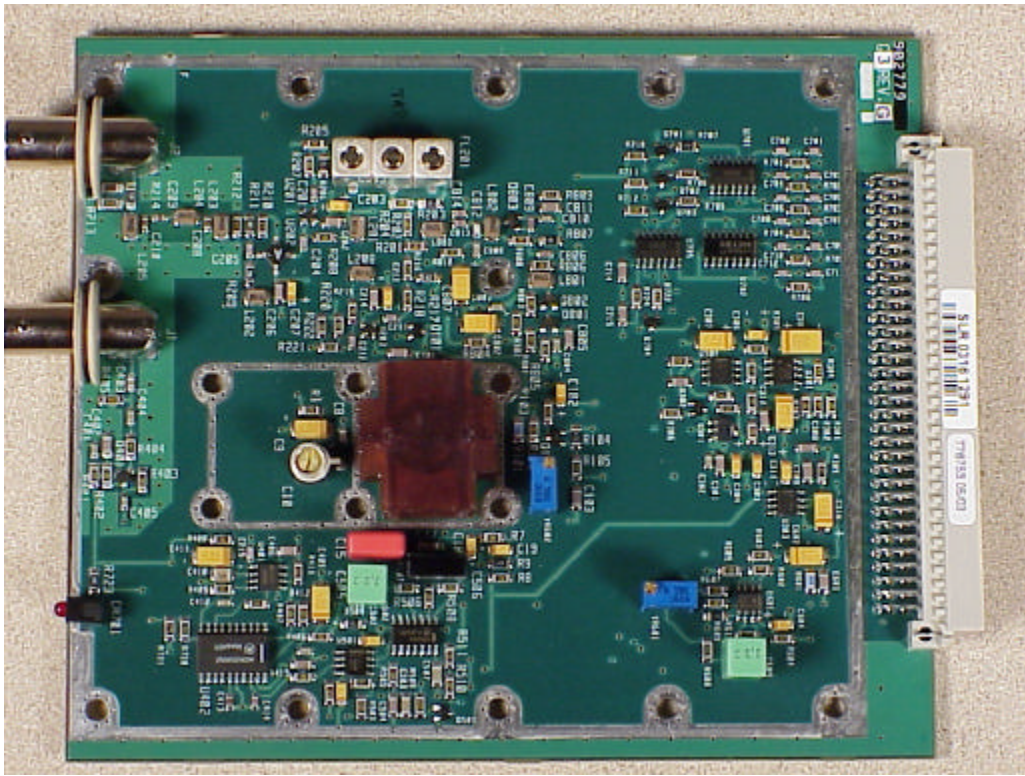


Figure 13 - Tx Synthesizer board top

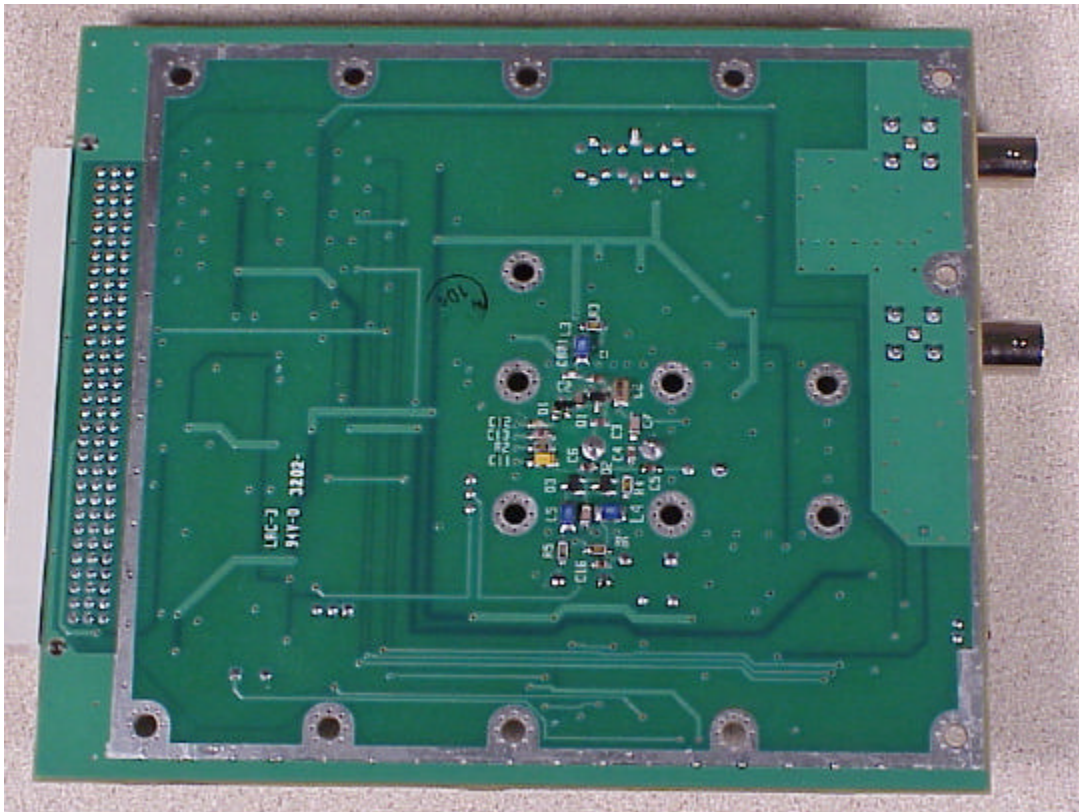


Figure 14 - Tx Synthesizer board bottom

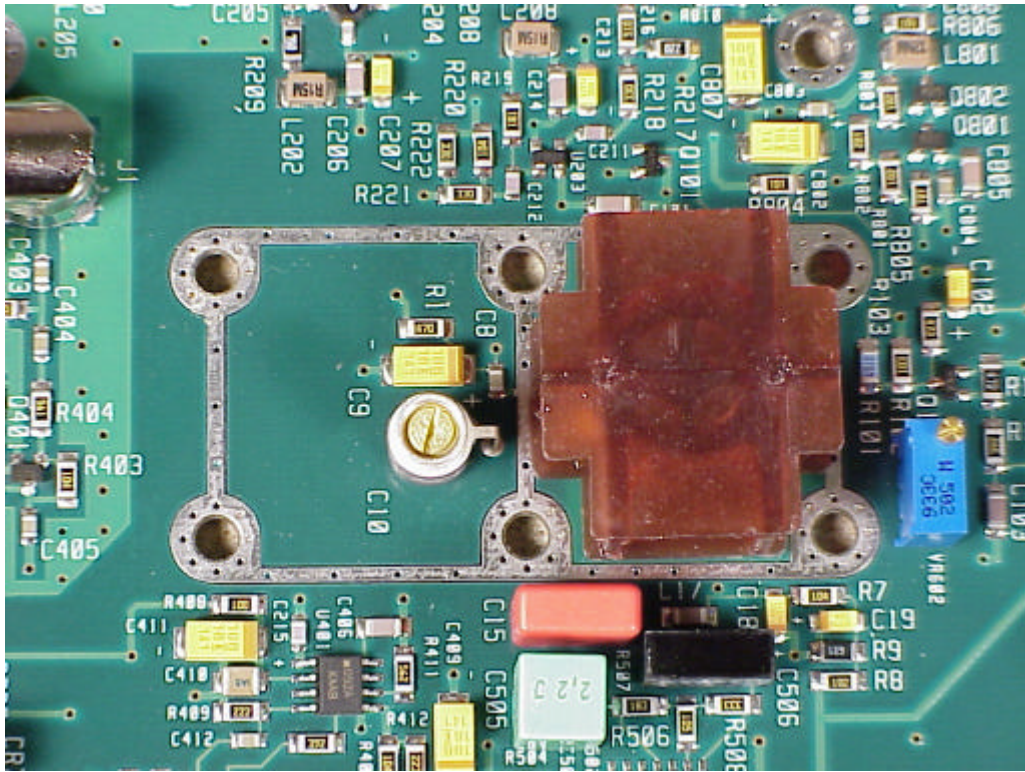


Figure 15 - Tx Synthesizer VCO top

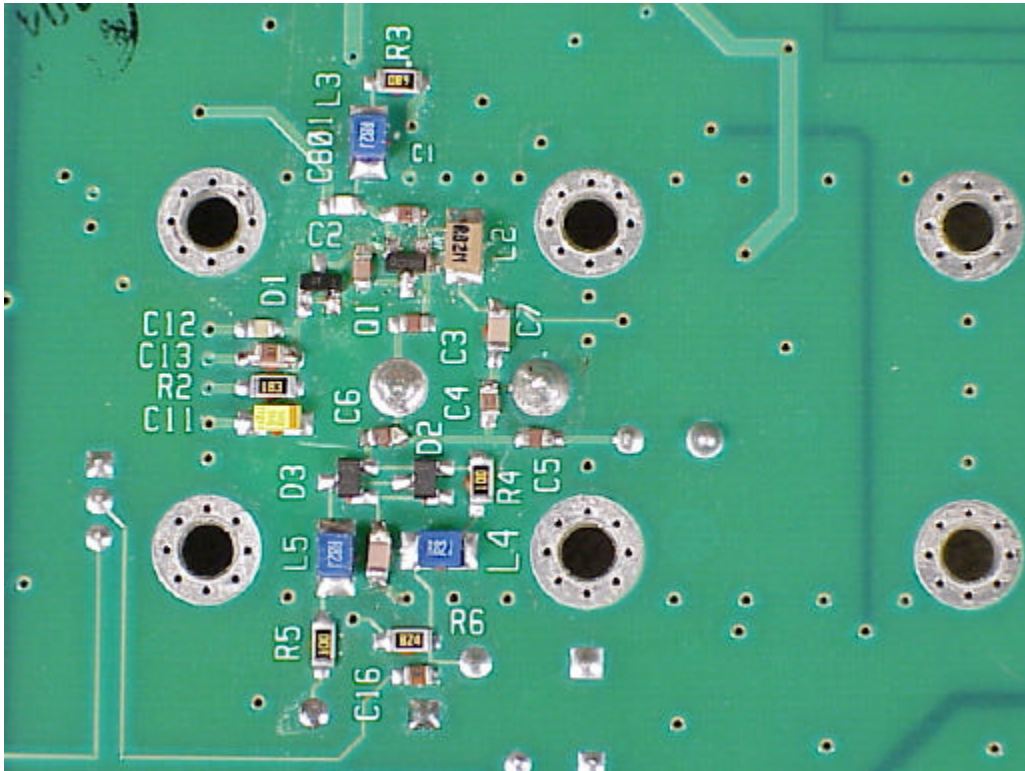


Figure 16 - Tx Synthesizer VCO bottom