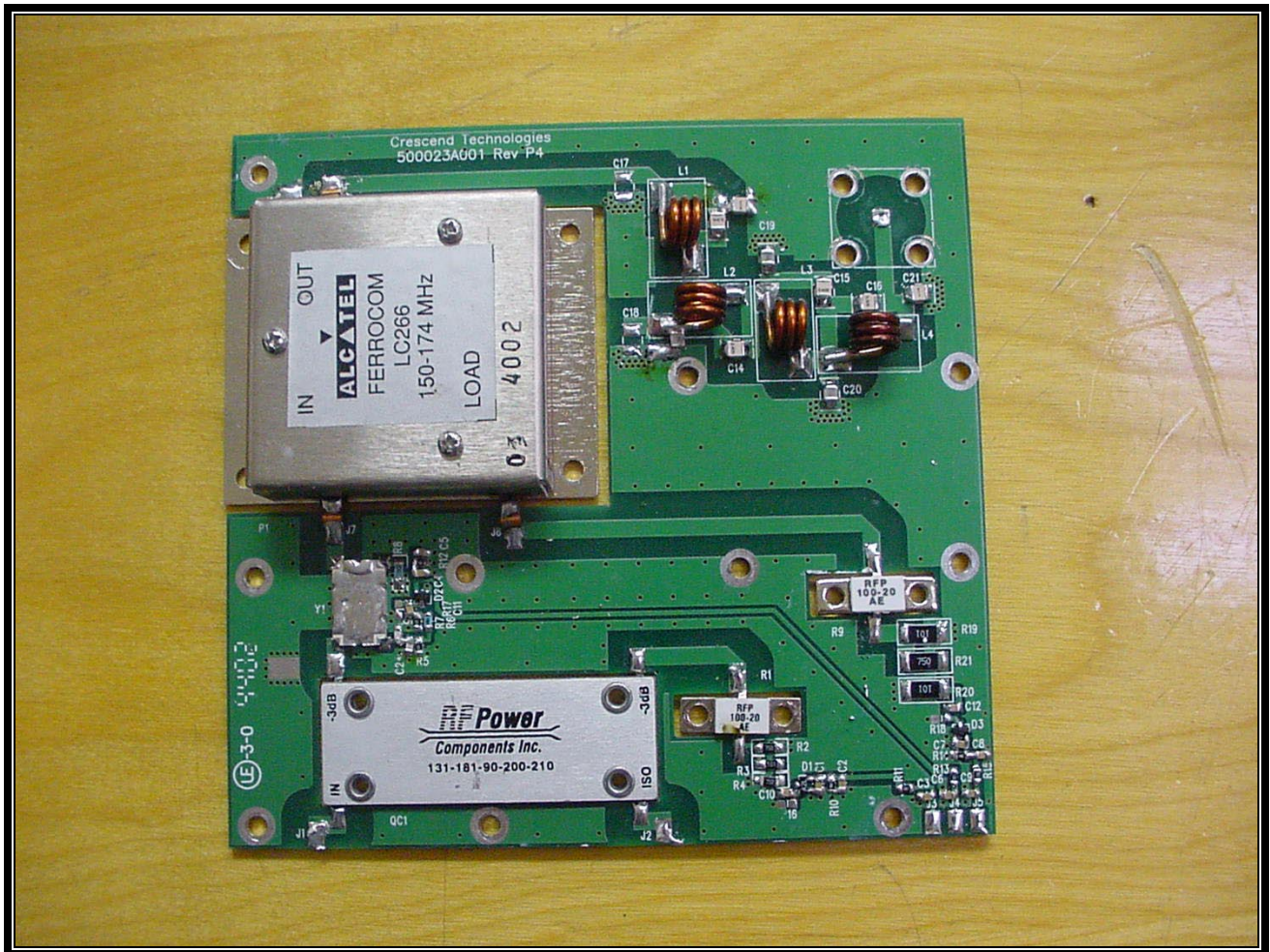
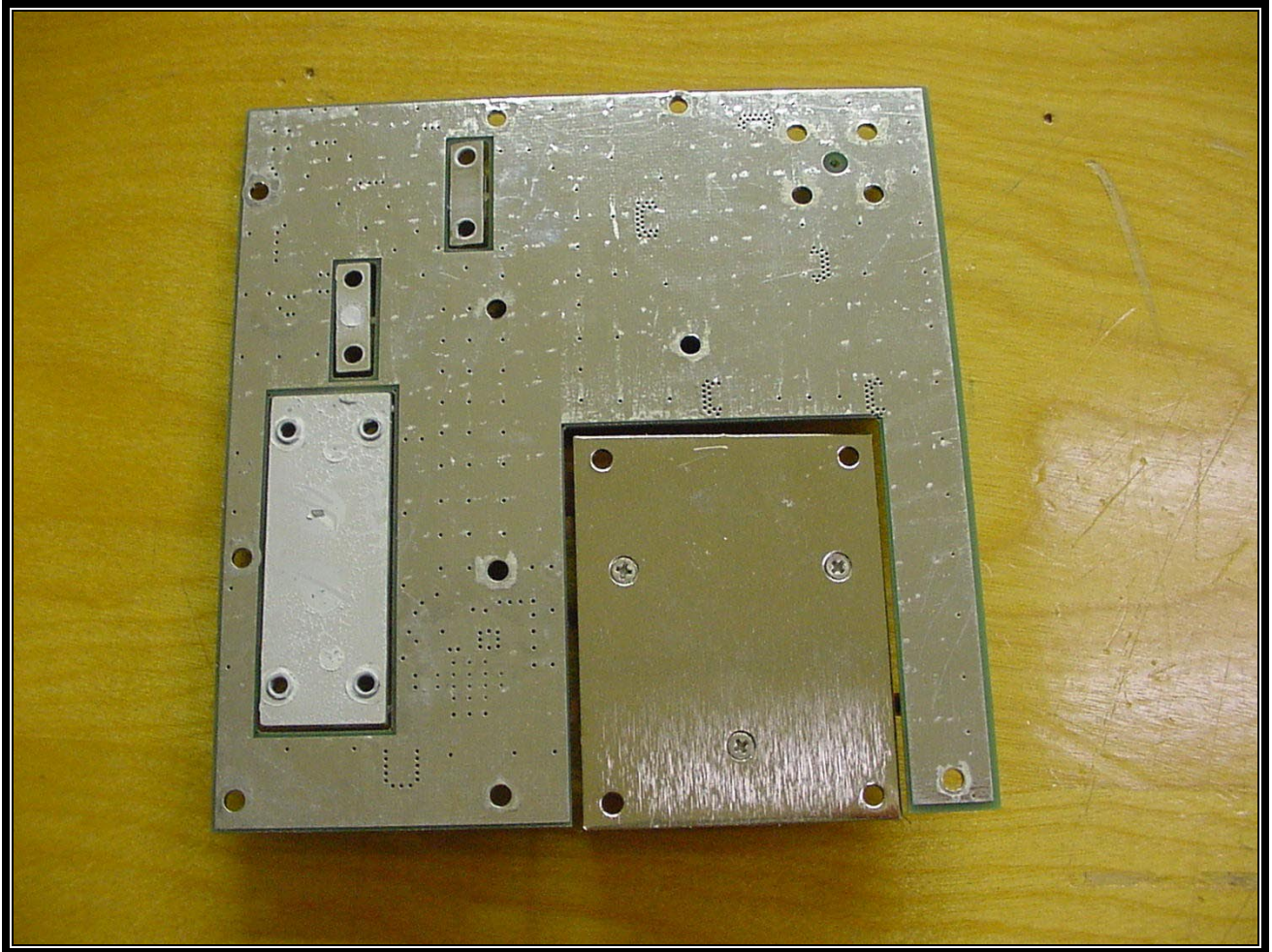
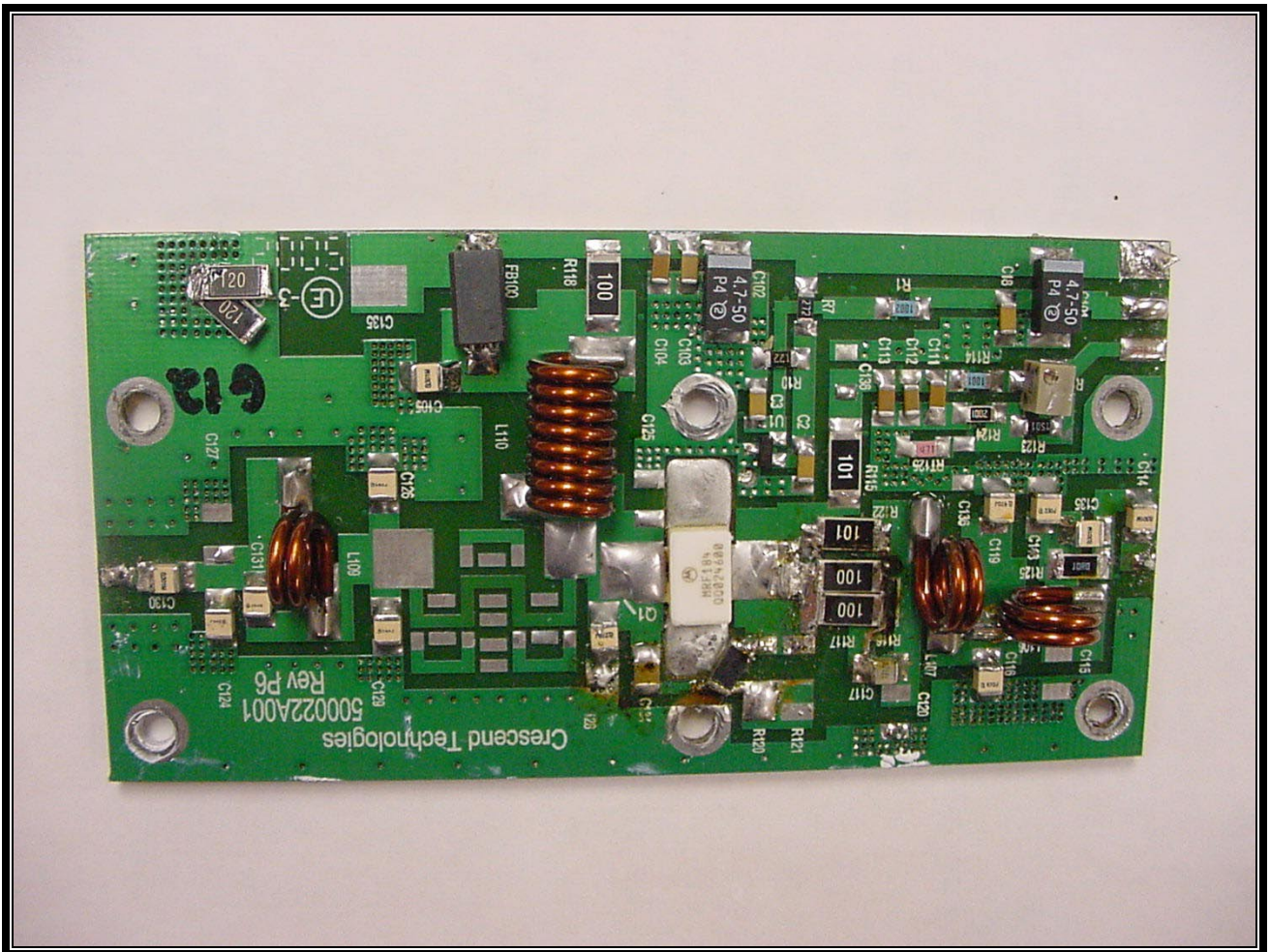


PHOTOGRAPH 17: PA BOARDS MOUNTED IN CHASSIS

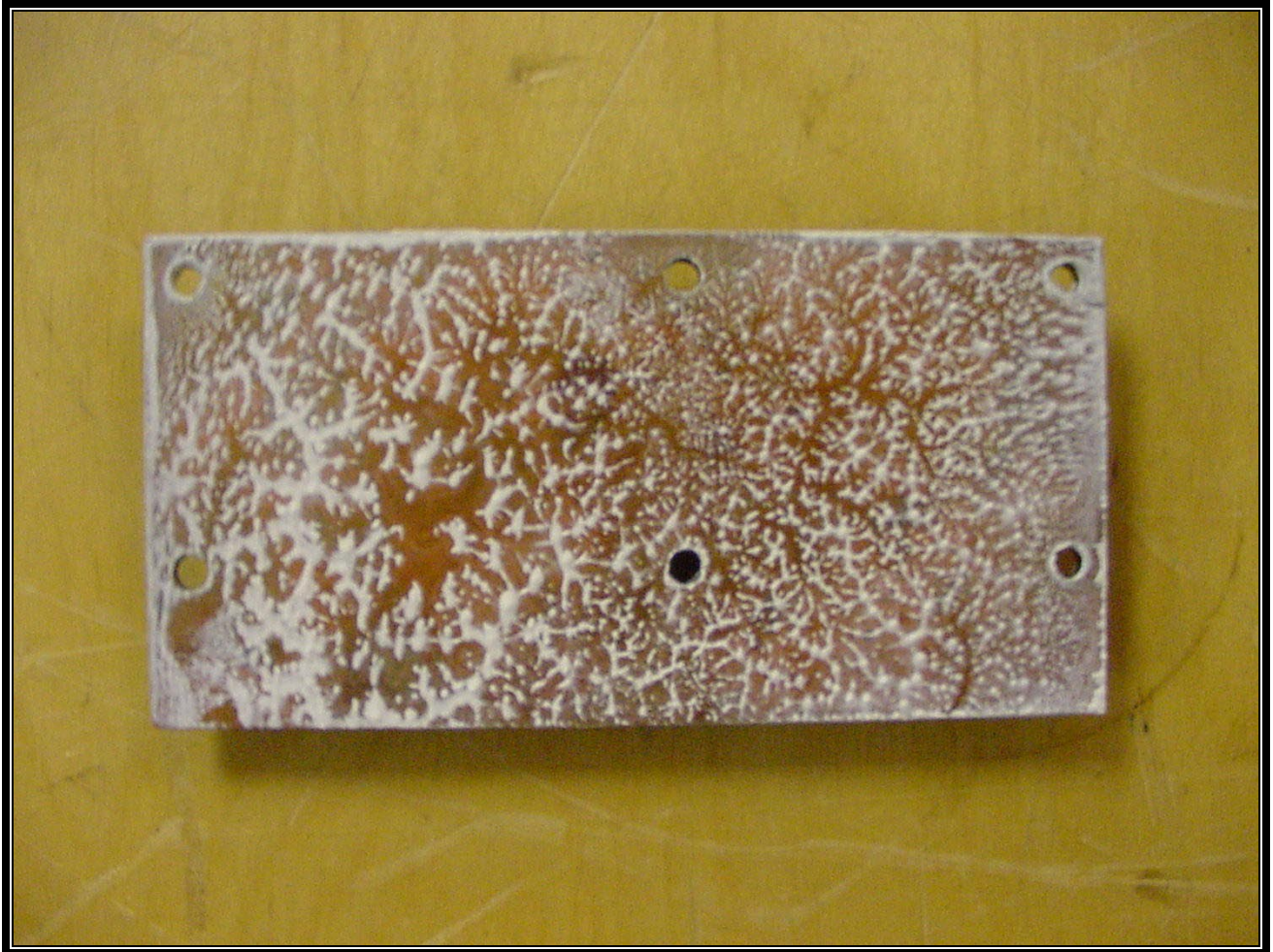




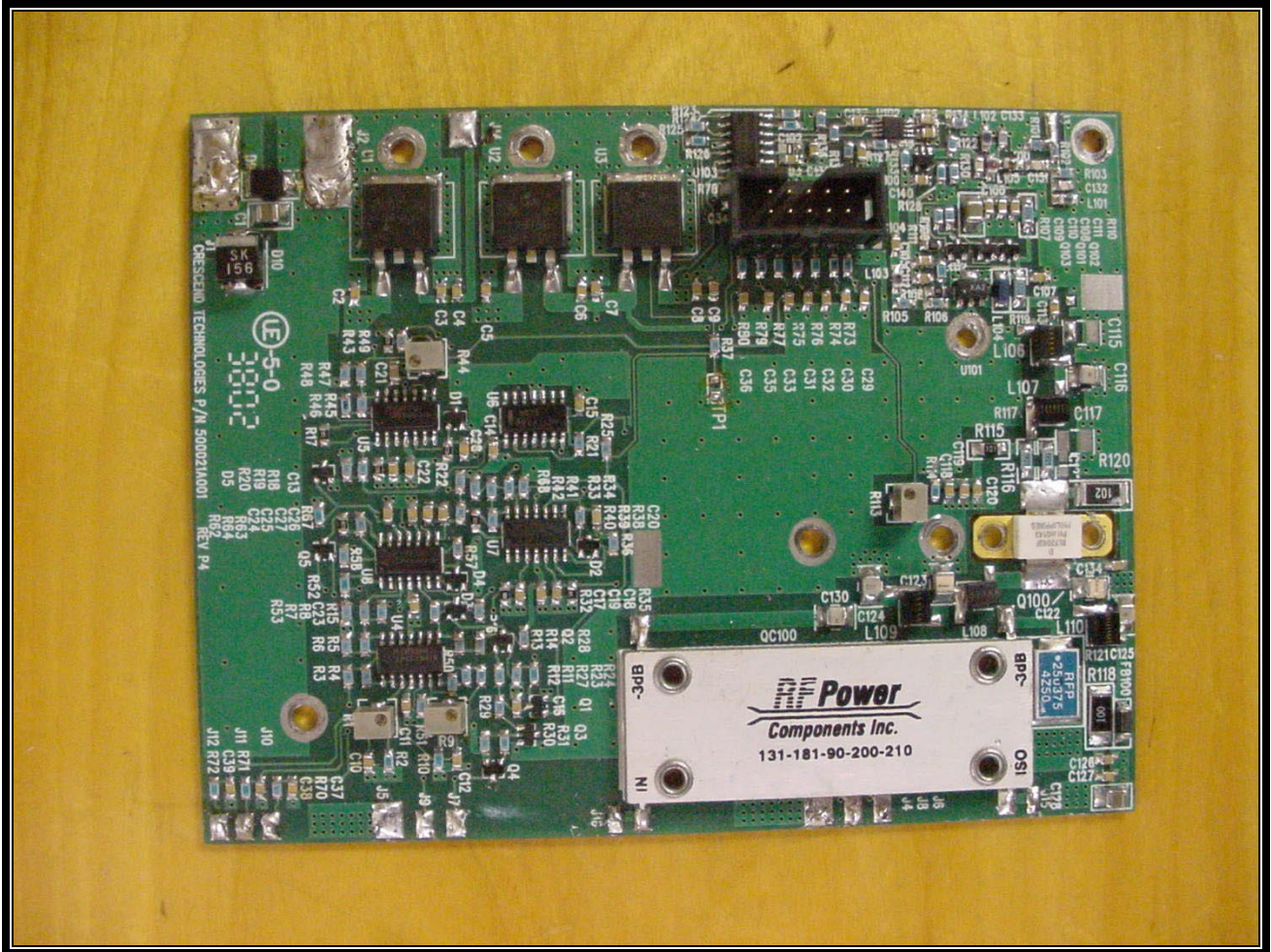
PHOTOGRAPH 19: VHF PA PCB#1 BOTTOM



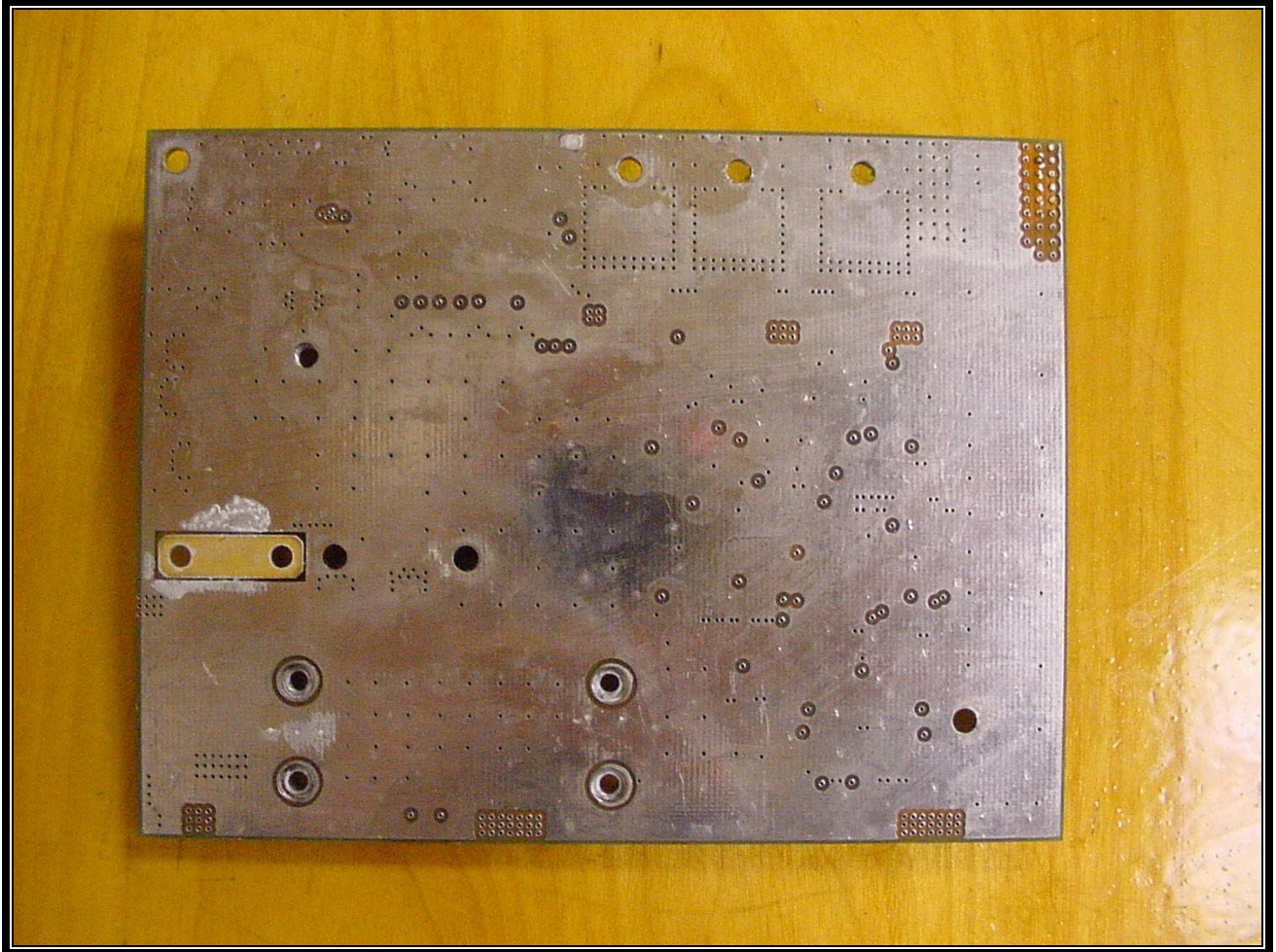
PHOTOGRAPH 20: VHF PA PCB #2 TOP



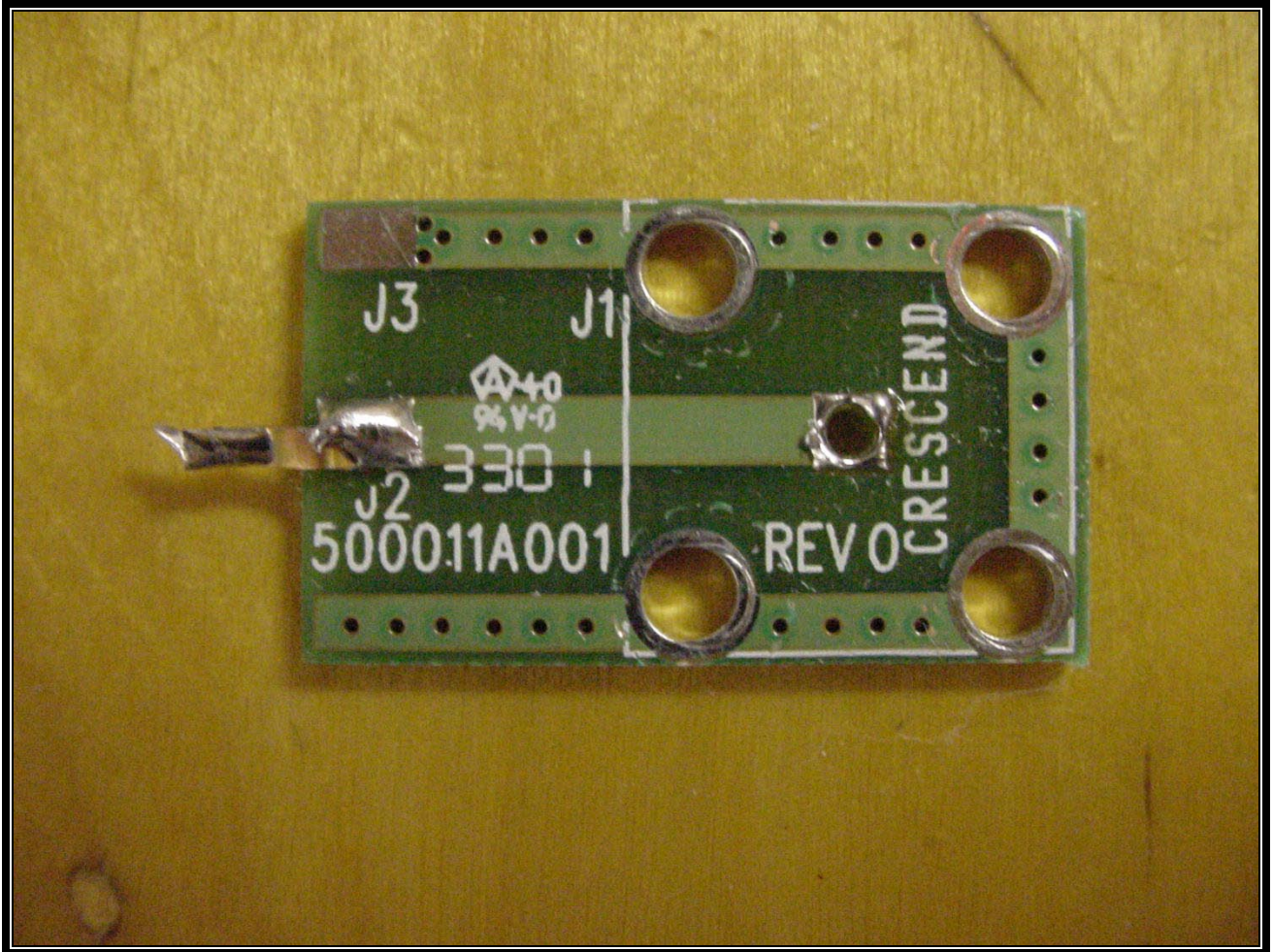
PHOTOGRAPH 21: VHF PA PCB #2 BOTTOM



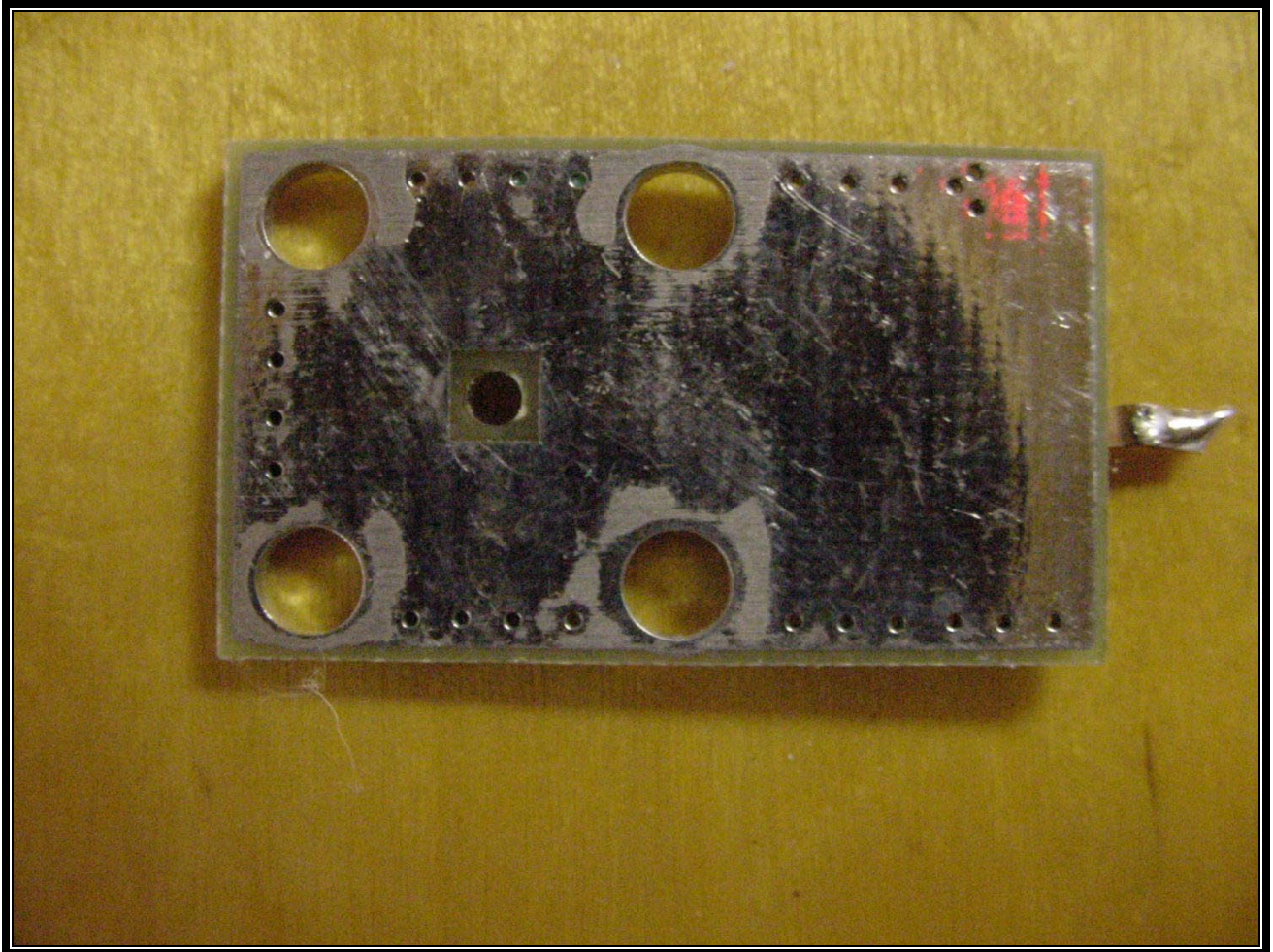
PHOTOGRAPH 22: VHF PA PCB #3 TOP



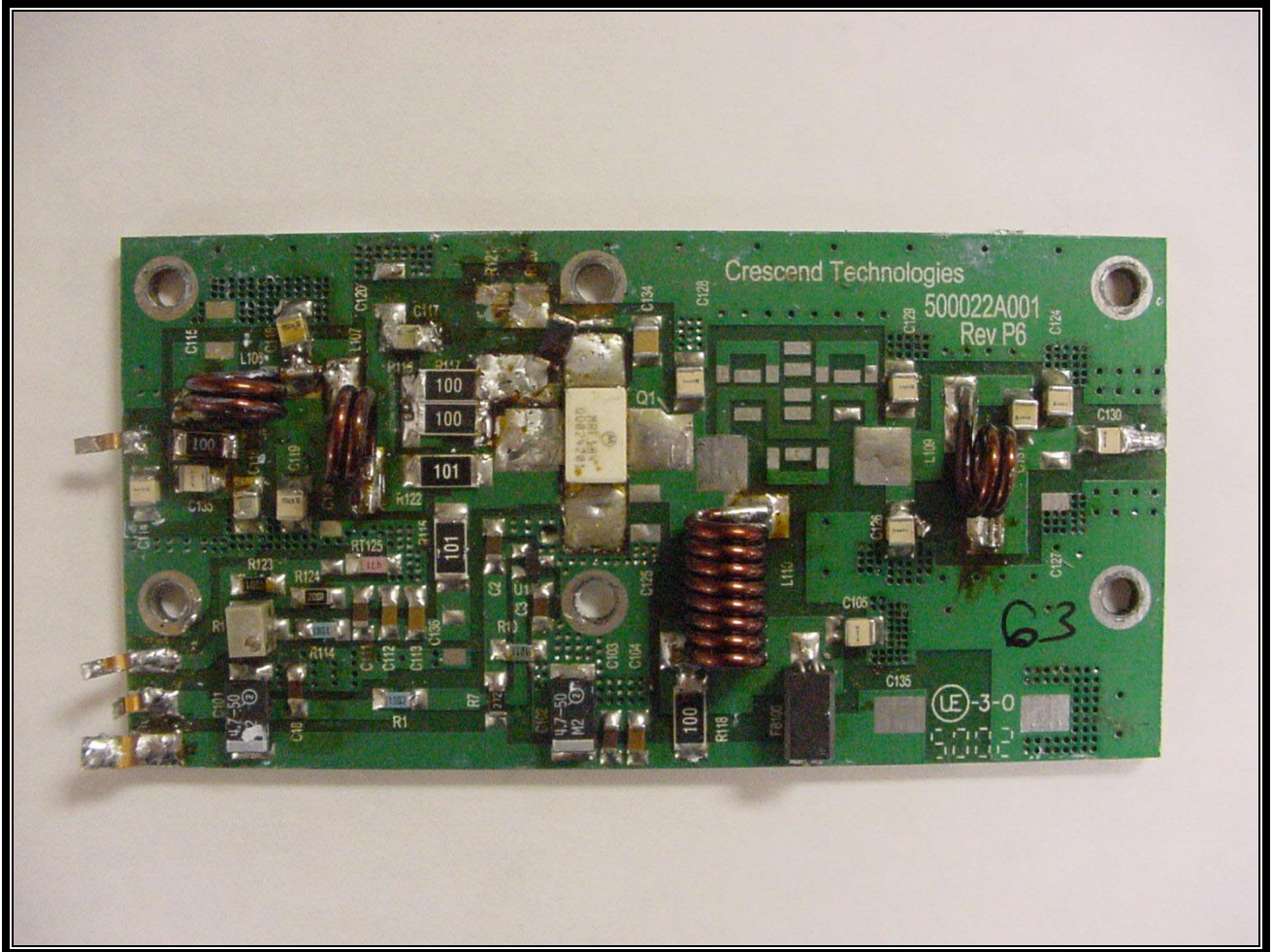
PHOTOGRAPH 23: VHF PA PCB #3 BOTTOM



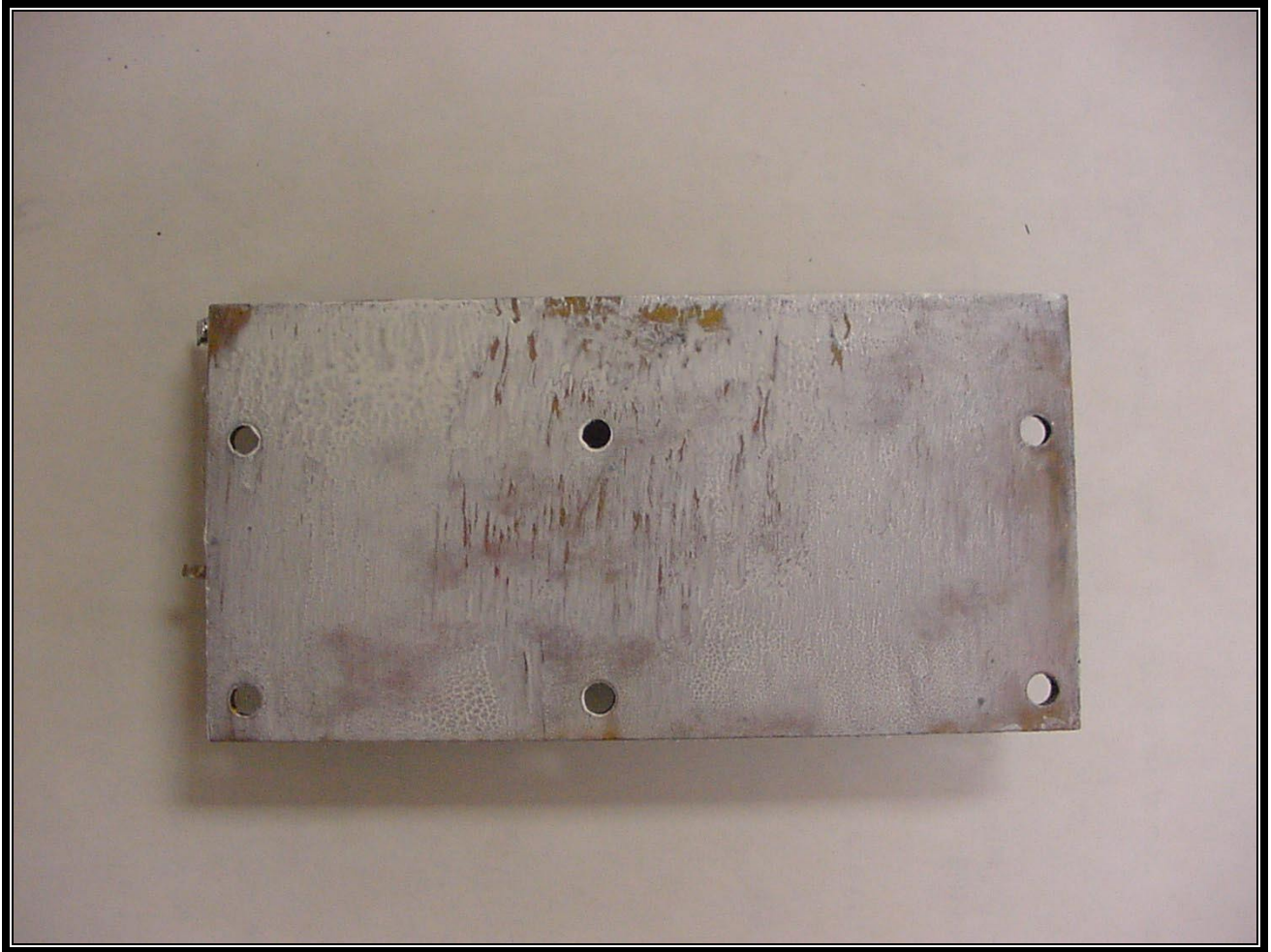
PHOTOGRAPH 24: VHF PA PCB #4 TOP



PHOTOGRAPH 25: VHF PA PCB #4 BOTTOM



PHOTOGRAPH 26: VHF PA PCB #5 TOP



PHOTOGRAPH 27: VHF PA PCB #5 BOTTOM