

Rhein Tech Laboratories  
360 Herndon Parkway  
Suite 1400  
Herndon, VA 20170  
<http://www.rheintech.com>

M/A Com Private Radio Systems, Inc.  
Model: P7100(IP) VHF Radio  
FCC ID: OWDTR-0013-E  
FCC & IC: Part 90 and RSS-119  
RTL WO: 2002158

## **APPENDIX D: PARTS LIST**

Please refer to the following pages.

**PARTS LIST : J725P/Pi VHF MAIN BOARD**

SYMBOL	KDE_PARTS_No.	PARTS_NAME	PARTS_DESCRIPTION	FUNCTION DESIGNATION		VENDOR_ITEM_NBR	Q'ty	VENDOR_NAME	REMARKS
C101	CN 8200	CAPACITOR	CERAMIC CHIP	100 pF	50V	GRM36CH101J50-PT	1	MURATA	
C102	CN 8080	CAPACITOR	CERAMIC CHIP	12 pF	50V	GRM36CH120J50-PT	1	MURATA	
C103	CN 7910	CAPACITOR	CERAMIC CHIP	3 pF	50V	GRM36CJ030C50-PT	1	MURATA	
C104	CN 7710	CAPACITOR	CERAMIC CHIP	0.01 uF	16V	GRM36B103K16-PT	1	MURATA	
C105	CN 7550	CAPACITOR	CERAMIC CHIP	1000 pF	50V	GRM36B102K50-PT	1	MURATA	
C106						GRM36	0	MURATA	Not Used
C107						GRM36	0	MURATA	Not Used
C108	CN 8090	CAPACITOR	CERAMIC CHIP	15 pF	50V	GRM36CH150J50-PT	1	MURATA	
C109	CN 8090	CAPACITOR	CERAMIC CHIP	15 pF	50V	GRM36CH150J50-PT	1	MURATA	
C110	CN 8100	CAPACITOR	CERAMIC CHIP	18 pF	50V	GRM36CH180J50-PT	1	MURATA	
C111	CN 8100	CAPACITOR	CERAMIC CHIP	18 pF	50V	GRM36CH180J50-PT	1	MURATA	
C112	CN 7550	CAPACITOR	CERAMIC CHIP	1000 pF	50V	GRM36B102K50-PT	1	MURATA	
C113	CN 7550	CAPACITOR	CERAMIC CHIP	1000 pF	50V	GRM36B102K50-PT	1	MURATA	
C114	CN 7710	CAPACITOR	CERAMIC CHIP	0.01 uF	16V	GRM36B103K16-PT	1	MURATA	
C115						GRM36	0	MURATA	Not Used
C116	CN 8040	CAPACITOR	CERAMIC CHIP	7 pF	50V	GRM36CH070D50-PT	1	MURATA	
C117	CN 7910	CAPACITOR	CERAMIC CHIP	3 pF	50V	GRM36CJ030C50-PT	1	MURATA	
C118						GRM36	0	MURATA	Not Used
C119	CN 8010	CAPACITOR	CERAMIC CHIP	4 pF	50V	GRM36CH040C50-PT	1	MURATA	
C120						GRM36	0	MURATA	Not Used
C121	CN 8020	CAPACITOR	CERAMIC CHIP	5 pF	50V	GRM36CH050C50-PT	1	MURATA	
C122	CN 9830	CAPACITOR	CERAMIC CHIP	0.1 uF	16V	GRM36F104Z16-PT	1	MURATA	
C124	CN 6630	CAPACITOR	CERAMIC CHIP	0.1 uF	10V	GRM36B104K10PT	1	MURATA	
C125	CN 6630	CAPACITOR	CERAMIC CHIP	0.1 uF	10V	GRM36B104K10PT	1	MURATA	
C126	CN 9830	CAPACITOR	CERAMIC CHIP	0.1 uF	16V	GRM36F104Z16-PT	1	MURATA	
C127	CN 9830	CAPACITOR	CERAMIC CHIP	0.1 uF	16V	GRM36F104Z16-PT	1	MURATA	
C128						GRM36	0	MURATA	Not Used
C129						GRM36	0	MURATA	Not Used
C131	CN 9830	CAPACITOR	CERAMIC CHIP	0.1 uF	16V	GRM36F104Z16-PT	1	MURATA	
C132	CN 7710	CAPACITOR	CERAMIC CHIP	0.01 uF	16V	GRM36B103K16-PT	1	MURATA	
C133	CN 7710	CAPACITOR	CERAMIC CHIP	0.01 uF	16V	GRM36B103K16-PT	1	MURATA	
C134	CN 7710	CAPACITOR	CERAMIC CHIP	0.01 uF	16V	GRM36B103K16-PT	1	MURATA	
C135	CN 7710	CAPACITOR	CERAMIC CHIP	0.01 uF	16V	GRM36B103K16-PT	1	MURATA	
C136	CN 7710	CAPACITOR	CERAMIC CHIP	0.01 uF	16V	GRM36B103K16-PT	1	MURATA	
C137	CN 6630	CAPACITOR	CERAMIC CHIP	0.1 uF	10V	GRM36B104K10PT	1	MURATA	
C138	CN 9830	CAPACITOR	CERAMIC CHIP	0.1 uF	16V	GRM36F104Z16-PT	1	MURATA	
C139	CN 9830	CAPACITOR	CERAMIC CHIP	0.1 uF	16V	GRM36F104Z16-PT	1	MURATA	
C140	CN 9830	CAPACITOR	CERAMIC CHIP	0.1 uF	16V	GRM36F104Z16-PT	1	MURATA	
C141	CN 9830	CAPACITOR	CERAMIC CHIP	0.1 uF	16V	GRM36F104Z16-PT	1	MURATA	
C142	CN 9830	CAPACITOR	CERAMIC CHIP	0.1 uF	16V	GRM36F104Z16-PT	1	MURATA	
C143	CN 8070	CAPACITOR	CERAMIC CHIP	10 pF	50V	GRM36CH100D50-PT	1	MURATA	
C144	CN 6630	CAPACITOR	CERAMIC CHIP	0.1 uF	10V	GRM36B104K10PT	1	MURATA	
C145	CN 7550	CAPACITOR	CERAMIC CHIP	1000 pF	50V	GRM36B102K50-PT	1	MURATA	
C146	CT 8860	CAPACITOR	TANTALUM CHIP	1 uF	10V	TEMSVA21A105M-8R	1	NEC	
C152	CN 8090	CAPACITOR	CERAMIC CHIP	15 pF	50V	GRM36CH150J50-PT	1	MURATA	
C153	CN 8060	CAPACITOR	CERAMIC CHIP	15 pF	50V	GRM36CH150J50-PT	1	MURATA	
C154	CN 8091	CAPACITOR	CERAMIC CHIP	9 pF	50V	GRM36CH090D50-PT	1	MURATA	
C155	CN 8010	CAPACITOR	CERAMIC CHIP	4 pF	50V	GRM36CH040C50-PT	1	MURATA	
C156	CN 7550	CAPACITOR	CERAMIC CHIP	1000 pF	50V	GRM36B102K50-PT	1	MURATA	
C157	CN 7710	CAPACITOR	CERAMIC CHIP	0.01 uF	16V	GRM36B103K16-PT	1	MURATA	
C158	CN 8090	CAPACITOR	CERAMIC CHIP	15 pF	50V	GRM36CH150J50-PT	1	MURATA	
C159	CN 8070	CAPACITOR	CERAMIC CHIP	10 pF	50V	GRM36CH100D50-PT	1	MURATA	
C160						GRM36	0	MURATA	Not Used
C162						GRM36	0	MURATA	Not Used
C163						GRM36	0	MURATA	Not Used
C164						GRM36	0	MURATA	Not Used
C168	CN 8220	CAPACITOR	CERAMIC CHIP	27 pF	50V	GRM36CH270J50-PT	1	MURATA	
C169	CN 7820	CAPACITOR	CERAMIC CHIP	2 pF	50V	GRM36CK020C50-PT	1	MURATA	
C170	CN 8220	CAPACITOR	CERAMIC CHIP	27 pF	50V	GRM36CH270J50-PT	1	MURATA	
C171	CN 6630	CAPACITOR	CERAMIC CHIP	0.1 uF	10V	GRM36B104K10PT	1	MURATA	
C172	CN 7550	CAPACITOR	CERAMIC CHIP	1000 pF	50V	GRM36B102K50-PT	1	MURATA	
C173	CN 8070	CAPACITOR	CERAMIC CHIP	10 pF	50V	GRM36CH100D50-PT	1	MURATA	
C174	CN 8230	CAPACITOR	CERAMIC CHIP	11 pF	50V	GRM36CH110J50-PT	1	MURATA	
C175	CN 7550	CAPACITOR	CERAMIC CHIP	1000 pF	50V	GRM36B102K50-PT	1	MURATA	
C176	CN 9830	CAPACITOR	CERAMIC CHIP	0.1 uF	16V	GRM36F104Z16-PT	1	MURATA	
C177	CN 7710	CAPACITOR	CERAMIC CHIP	0.01 uF	16V	GRM36B103K16-PT	1	MURATA	
C178	CN 7820	CAPACITOR	CERAMIC CHIP	2 pF	50V	GRM36CK020C50-PT	1	MURATA	
C179	CN 8070	CAPACITOR	CERAMIC CHIP	10 pF	50V	GRM36CH100D50-PT	1	MURATA	
C180	CN 8200	CAPACITOR	CERAMIC CHIP	100 pF	50V	GRM36CH101J50-PT	1	MURATA	
C181	CN 7710	CAPACITOR	CERAMIC CHIP	0.01 uF	16V	GRM36B103K16-PT	1	MURATA	
C201	CS 1490	CAPACITOR	CERAMIC CHIP	1 uF	10V	C1608JB1A105KT	1	TDK	
C202	CN 8070	CAPACITOR	CERAMIC CHIP	10 pF	50V	GRM36CH100D50-PT	1	MURATA	
C205	CN 6630	CAPACITOR	CERAMIC CHIP	0.1 uF	10V	GRM36B104K10PT	1	MURATA	
C210						GRM39	0	MURATA	Not Used
C218	CN 8200	CAPACITOR	CERAMIC CHIP	100 pF	50V	GRM36CH101J50-PT	1	MURATA	
C220						GRM36	0	MURATA	Not Used
C222						GRM36	0	MURATA	Not Used
C223						GRM36	0	MURATA	Not Used
C224						GRM36	0	MURATA	Not Used
C225	CN 8200	CAPACITOR	CERAMIC CHIP	100 pF	50V	GRM36CH101J50-PT	1	MURATA	
C226	CN 8200	CAPACITOR	CERAMIC CHIP	100 pF	50V	GRM36CH101J50-PT	1	MURATA	
C227	CN 8200	CAPACITOR	CERAMIC CHIP	100 pF	50V	GRM36CH101J50-PT	1	MURATA	
C228	CN 7710	CAPACITOR	CERAMIC CHIP	0.01 uF	16V	GRM36B103K16-PT	1	MURATA	
C229	CN 9410	CAPACITOR	CERAMIC CHIP	180 pF	25V	GRM36CH181J25-PT	1	MURATA	
C230	CN 7550	CAPACITOR	CERAMIC CHIP	1000 pF	50V	GRM36B102K50-PT	1	MURATA	
C231	CN 8080	CAPACITOR	CERAMIC CHIP	12 pF	50V	GRM36CH120J50-PT	1	MURATA	
C232						GRM36	0	MURATA	Not Used
C233	CN 8120	CAPACITOR	CERAMIC CHIP	22 pF	50V	GRM36CH220J50-PT	1	MURATA	
C234	CN 8120	CAPACITOR	CERAMIC CHIP	22 pF	50V	GRM36CH220J50-PT	1	MURATA	
C235	CN 8200	CAPACITOR	CERAMIC CHIP	100 pF	50V	GRM36CH101J50-PT	1	MURATA	
C236						GRM39	0	MURATA	Not Used
C237						GRM39	0	MURATA	Not Used
C238						GRM36	0	MURATA	Not Used
C251	CT 2290	CAPACITOR	TANTALUM CHIP	15 uF	16V	TEMSVB21C156M-8R	1	NEC	
C252	CN 7550	CAPACITOR	CERAMIC CHIP	1000 pF	50V	GRM36B102K50-PT	1	MURATA	
C253						TEMSVB	0	NEC	Not Used
C255	CN 7550	CAPACITOR	CERAMIC CHIP	1000 pF	50V	GRM36B102K50-PT	1	MURATA	
C256	CT 2280	CAPACITOR	TANTALUM CHIP	4.7 uF	10V	TEMSVA21A475M-8R	1	NEC	

## PARTS LIST : J725P/Pi VHF MAIN BOARD

SYMBOL	KDE_PARTS_No.	PARTS_NAME	PARTS_DESCRIPTION	FUNCTION DESIGNATION	VENDOR_ITEM_NBR	Q'ty	VENDOR_NAME	REMARKS	
C257	CN 8170	CAPACITOR	CERAMIC CHIP	47 pF	50V	GRM36CH470J50-PT	1	MURATA	
C258	CN 8150	CAPACITOR	CERAMIC CHIP	39 pF	50V	GRM36CH390J50-PT	1	MURATA	
C259	CN 8140	CAPACITOR	CERAMIC CHIP	33 pF	50V	GRM36CH330J50-PT	1	MURATA	
C260	CN 7710	CAPACITOR	CERAMIC CHIP	0.01 uF	16V	GRM36B103K16-PT	1	MURATA	
C261	CN 7710	CAPACITOR	CERAMIC CHIP	0.01 uF	16V	GRM36B103K16-PT	1	MURATA	
C301	CN 7550	CAPACITOR	CERAMIC CHIP	1000 pF	50V	GRM36B102K50-PT	1	MURATA	
C302	CN 7550	CAPACITOR	CERAMIC CHIP	1000 pF	50V	GRM36B102K50-PT	1	MURATA	
C303	CT 8860	CAPACITOR	TANTALUM CHIP	1 uF	10V	TEMSVA21A105M-8R	1	NEC	
C305	CN 7710	CAPACITOR	CERAMIC CHIP	0.01 uF	16V	GRM36B103K16-PT	1	MURATA	
C306	CN 8140	CAPACITOR	CERAMIC CHIP	33 pF	50V	GRM36CH330J50-PT	1	MURATA	
C307	CN 8140	CAPACITOR	CERAMIC CHIP	33 pF	50V	GRM36CH330J50-PT	1	MURATA	
C308						GRM36	0	MURATA	Not Used
C309	CN 8200	CAPACITOR	CERAMIC CHIP	100 pF	50V	GRM36CH101J50-PT	1	MURATA	
C310	CN 8200	CAPACITOR	CERAMIC CHIP	100 pF	50V	GRM36CH101J50-PT	1	MURATA	
C311	CN 8200	CAPACITOR	CERAMIC CHIP	100 pF	50V	GRM36CH101J50-PT	1	MURATA	
C312	CN 8120	CAPACITOR	CERAMIC CHIP	22 pF	50V	GRM36CH220J50-PT	1	MURATA	
C313	CN 8120	CAPACITOR	CERAMIC CHIP	22 pF	50V	GRM36CH220J50-PT	1	MURATA	
C314	CN 8120	CAPACITOR	CERAMIC CHIP	22 pF	50V	GRM36CH220J50-PT	1	MURATA	
C315	CN 7550	CAPACITOR	CERAMIC CHIP	1000 pF	50V	GRM36B102K50-PT	1	MURATA	
C317	CT 8860	CAPACITOR	TANTALUM CHIP	1 uF	10V	TEMSVA21A105M-8R	1	NEC	
C318	CN 7550	CAPACITOR	CERAMIC CHIP	1000 pF	50V	GRM36B102K50-PT	1	MURATA	
C319	CN 6630	CAPACITOR	CERAMIC CHIP	0.1 uF	10V	GRM36B104K10PT	1	MURATA	
C320	CT 8860	CAPACITOR	TANTALUM CHIP	1 uF	10V	TEMSVA21A105M-8R	1	NEC	
C321	CN 7550	CAPACITOR	CERAMIC CHIP	1000 pF	50V	GRM36B102K50-PT	1	MURATA	
C322	CN 6630	CAPACITOR	CERAMIC CHIP	0.1 uF	10V	GRM36B104K10PT	1	MURATA	
C323	CT 8860	CAPACITOR	TANTALUM CHIP	1 uF	10V	TEMSVA21A105M-8R	1	NEC	
C325	CN 8010	CAPACITOR	CERAMIC CHIP	4 pF	50V	GRM36CH040C50-PT	1	MURATA	
C326	CN 8090	CAPACITOR	CERAMIC CHIP	15 pF	50V	GRM36CH150J50-PT	1	MURATA	
C327	CN 6630	CAPACITOR	CERAMIC CHIP	0.1 uF	10V	GRM36B104K10PT	1	MURATA	
C328	CN 7730	CAPACITOR	CERAMIC CHIP	0.1 uF	16V	GRM39B104K16-PT	1	MURATA	
C329	CN 9830	CAPACITOR	CERAMIC CHIP	0.1 uF	16V	GRM36F104Z16-PT	1	MURATA	
C330	CN 6630	CAPACITOR	CERAMIC CHIP	0.1 uF	10V	GRM36B104K10PT	1	MURATA	
C331						GRM36	0	MURATA	Not Used
C332	CN 8200	CAPACITOR	CERAMIC CHIP	100 pF	50V	GRM36CH101J50-PT	1	MURATA	
C333	CN 7710	CAPACITOR	CERAMIC CHIP	0.01 uF	16V	GRM36B103K16-PT	1	MURATA	
C334	CN 7710	CAPACITOR	CERAMIC CHIP	0.01 uF	16V	GRM36B103K16-PT	1	MURATA	
C336	CT 6400	CAPACITOR	TANTALUM CHIP	0.33 uF	35V	267M3502 334MR	1	MATUSO	
C337	CT 8660	CAPACITOR	TANTALUM CHIP	0.1 uF	16V	TEMSVA1C475M8R	1	NEC	
C338	CN 5320	CAPACITOR	CERAMIC CHIP	4.7 uF	25V	GRM39B103K25-PT	1	MURATA	
C340	CH 6290	CAPACITOR	FILM CHIP CAPASITOR	0.022 uF	16V	ECHU 1C 223JB5	1	MATUSHITA	
C341	CN 5090	CAPACITOR	CERAMIC CHIP	1000 pF	50V	GRM39B102K50-PT	1	MURATA	
C343	CN 7550	CAPACITOR	CERAMIC CHIP	1000 pF	50V	GRM36B102K50-PT	1	MURATA	
C344	CN 6630	CAPACITOR	CERAMIC CHIP	0.1 uF	10V	GRM36B104K10PT	1	MURATA	
C345	CN 9830	CAPACITOR	CERAMIC CHIP	0.1 uF	16V	GRM36F104Z16-PT	1	MURATA	
C346	CT 8860	CAPACITOR	TANTALUM CHIP	1 uF	10V	TEMSVA21A105M-8R	1	NEC	
C348						TEMSVA	0	NEC	Not Used
C349	CT 8860	CAPACITOR	TANTALUM CHIP	1 uF	10V	TEMSVA21A105M-8R	1	NEC	
C351	CN 7550	CAPACITOR	CERAMIC CHIP	1000 pF	50V	GRM36B102K50-PT	1	MURATA	
C352	CN 7710	CAPACITOR	CERAMIC CHIP	0.01 uF	16V	GRM36B103K16-PT	1	MURATA	
C355	CT 8680	CAPACITOR	TANTALUM CHIP	10 uF	10V	TEMSVA1A106M-8R	1	NEC	
C356	CN 8410	CAPACITOR	CERAMIC CHIP	0.033 uF	16V	GRM39B333K16PT	1	MURATA	
C357						GRM39	0	MURATA	Not Used
C358	CN 8410	CAPACITOR	CERAMIC CHIP	0.033 uF	16V	GRM39B333K16PT	1	MURATA	
C360						GRM36	0	MURATA	Not Used
C367	CN 8200	CAPACITOR	CERAMIC CHIP	100 pF	50V	GRM36CH101J50-PT	1	MURATA	
C371						GRM36	0	MURATA	Not Used
C372	CN 6630	CAPACITOR	CERAMIC CHIP	0.1 uF	10V	GRM36B104K10PT	1	MURATA	
C373	CN 6630	CAPACITOR	CERAMIC CHIP	0.1 uF	10V	GRM36B104K10PT	1	MURATA	
C374	CN 6630	CAPACITOR	CERAMIC CHIP	0.1 uF	10V	GRM36B104K10PT	1	MURATA	
C375						GRM36	0	MURATA	Not Used
C401						TEMSVA	0	NEC	Not Used
C402	CN 9830	CAPACITOR	CERAMIC CHIP	0.1 uF	16V	GRM36F104Z16-PT	1	MURATA	
C403	CN 7730	CAPACITOR	CERAMIC CHIP	0.1 uF	16V	GRM39B104K16-PT	1	MURATA	
C404						TEMSVA	0	NEC	Not Used
C405	CN 9830	CAPACITOR	CERAMIC CHIP	0.1 uF	16V	GRM36F104Z16-PT	1	MURATA	
C406	CT 2280	CAPACITOR	TANTALUM CHIP	1 uF	10V	TEMSVA21A105M-8R	1	NEC	
C407						TEMSVA	0	NEC	Not Used
C408	CN 9830	CAPACITOR	CERAMIC CHIP	0.1 uF	16V	GRM36F104Z16-PT	1	MURATA	
C409	CT 8860	CAPACITOR	TANTALUM CHIP	1 uF	10V	TEMSVA21A105M-8R	1	NEC	
C410	CN 7550	CAPACITOR	CERAMIC CHIP	1000 pF	50V	GRM36B102K50-PT	1	MURATA	
C411	CN 7710	CAPACITOR	CERAMIC CHIP	0.01 uF	16V	GRM36B103K16-PT	1	MURATA	
C412	CN 6630	CAPACITOR	CERAMIC CHIP	0.1 uF	10V	GRM36B104K10PT	1	MURATA	
C413	CN 7730	CAPACITOR	CERAMIC CHIP	0.1 uF	16V	GRM39B104K16-PT	1	MURATA	
C414	CN 7730	CAPACITOR	CERAMIC CHIP	0.1 uF	16V	GRM39B104K16-PT	1	MURATA	
C415	CN 7550	CAPACITOR	CERAMIC CHIP	1000 pF	50V	GRM36B102K50-PT	1	MURATA	
C419	CN 6630	CAPACITOR	CERAMIC CHIP	0.1 uF	10V	GRM36B104K10PT	1	MURATA	
C421	CN 9830	CAPACITOR	CERAMIC CHIP	0.1 uF	16V	GRM36F104Z16-PT	1	MURATA	
C422	CN 7710	CAPACITOR	CERAMIC CHIP	0.01 uF	16V	GRM36B103K16-PT	1	MURATA	
C423	CN 7550	CAPACITOR	CERAMIC CHIP	1000 pF	50V	GRM36B102K50-PT	1	MURATA	
C424	CN 9830	CAPACITOR	CERAMIC CHIP	0.1 uF	16V	GRM36F104Z16-PT	1	MURATA	
C425	CN 7550	CAPACITOR	CERAMIC CHIP	1000 pF	50V	GRM36B102K50-PT	1	MURATA	
C426	CN 8520	CAPACITOR	CERAMIC CHIP	0.33 uF	16V	GRM40B334K16-PT	1	MURATA	
C427	CN 7550	CAPACITOR	CERAMIC CHIP	1000 pF	50V	GRM36B102K50-PT	1	MURATA	
C428	CN 9830	CAPACITOR	CERAMIC CHIP	0.1 uF	16V	GRM36F104Z16-PT	1	MURATA	
C429						TEMSVA	0	NEC	Not Used
C430	CN 7710	CAPACITOR	CERAMIC CHIP	0.01 uF	16V	GRM36B103K16-PT	1	MURATA	
C431	CN 7550	CAPACITOR	CERAMIC CHIP	1000 pF	50V	GRM36B102K50-PT	1	MURATA	
C432	CN 7730	CAPACITOR	CERAMIC CHIP	0.1 uF	16V	GRM39B104K16-PT	1	MURATA	
C433	CN 7730	CAPACITOR	CERAMIC CHIP	0.1 uF	16V	GRM39B104K16-PT	1	MURATA	
C500	CN 7570	CAPACITOR	CERAMIC CHIP	2200 pF	50V	GRM36B222K50-PT	1	MURATA	
C501	CN 7540	CAPACITOR	CERAMIC CHIP	680 pF	50V	GRM36B681K50-PT	1	MURATA	
C502	CN 7570	CAPACITOR	CERAMIC CHIP	2200 pF	50V	GRM36B222K50-PT	1	MURATA	
C503	CN 7710	CAPACITOR	CERAMIC CHIP	0.01 uF	16V	GRM36B103K16-PT	1	MURATA	
C504						GRM39	0	MURATA	Not Used
C505	CN 8200	CAPACITOR	CERAMIC CHIP	100 pF	50V	GRM36CH101J50-PT	1	MURATA	
C506	CN 7730	CAPACITOR	CERAMIC CHIP	0.1 uF	16V	GRM39B104K16-PT	1	MURATA	
C507	CT 3210	CAPACITOR	TANTALUM CHIP	3.3 uF	10V	TESVSP1A335M8R	1	NEC	
C508	CN 7570	CAPACITOR	CERAMIC CHIP	2200 pF	50V	GRM36B222K50-PT	1	MURATA	

## PARTS LIST : J725P/Pi VHF MAIN BOARD

SYMBOL	KDE_PARTS_No.	PARTS_NAME	PARTS_DESCRIPTION	FUNCTION DESIGNATION	VENDOR_ITEM_NBR	Q'ty	VENDOR_NAME	REMARKS	
C509	CN 8390	CAPACITOR	CERAMIC CHIP	0.047 uF	25V	GRM39B473K25-PT	1	MURATA	
C510	CN 9420	CAPACITOR	CERAMIC CHIP	220 pF	25V	GRM36CH221J25-PT	1	MURATA	
C511	CT 3210	CAPACITOR	TANTALUM CHIP	3.3 uF	10V	TESVSP1A335M8R	1	NEC	
C512	CM 7590	CAPACITOR	CERAMIC CHIP	0.082 uF	16V	GRM39B823K16-PT	1	MURATA	
C513	CN 7570	CAPACITOR	CERAMIC CHIP	2200 pF	50V	GRM36B222K50-PT	1	MURATA	
C514	CN 7570	CAPACITOR	CERAMIC CHIP	2200 pF	50V	GRM36B222K50-PT	1	MURATA	
C515	CN 7730	CAPACITOR	CERAMIC CHIP	0.1 uF	16V	GRM39B104K16-PT	1	MURATA	
C516	CN 7710	CAPACITOR	CERAMIC CHIP	0.01 uF	16V	GRM36B103K16-PT	1	MURATA	
C517	CN 7570	CAPACITOR	CERAMIC CHIP	2200 pF	50V	GRM36B222K50-PT	1	MURATA	
C518	CN 7710	CAPACITOR	CERAMIC CHIP	0.01 uF	16V	GRM36B103K16-PT	1	MURATA	
C519	CN 7570	CAPACITOR	CERAMIC CHIP	2200 pF	50V	GRM36B222K50-PT	1	MURATA	
C520	CN 7710	CAPACITOR	CERAMIC CHIP	0.01 uF	16V	GRM36B103K16-PT	1	MURATA	
C521	CN 7570	CAPACITOR	CERAMIC CHIP	2200 pF	50V	GRM36B222K50-PT	1	MURATA	
C522	CN 7710	CAPACITOR	CERAMIC CHIP	0.01 uF	16V	GRM36B103K16-PT	1	MURATA	
C523	CN 7570	CAPACITOR	CERAMIC CHIP	2200 pF	50V	GRM36B222K50-PT	1	MURATA	
C524	CN 5320	CAPACITOR	CERAMIC CHIP	0.01 uF	25V	GRM39B103K25-PT	1	MURATA	
C525						GRM36	0	MURATA	Not Used
C526	CN 7710	CAPACITOR	CERAMIC CHIP	0.01 uF	16V	GRM36B103K16-PT	1	MURATA	
C527	CN 7570	CAPACITOR	CERAMIC CHIP	2200 pF	50V	GRM36B222K50-PT	1	MURATA	
C528	CN 7710	CAPACITOR	CERAMIC CHIP	0.01 uF	16V	GRM36B103K16-PT	1	MURATA	
C529	CN 7710	CAPACITOR	CERAMIC CHIP	0.01 uF	16V	GRM36B103K16-PT	1	MURATA	
C530	CN 7570	CAPACITOR	CERAMIC CHIP	2200 pF	50V	GRM36B222K50-PT	1	MURATA	
C531	CN 7710	CAPACITOR	CERAMIC CHIP	0.01 uF	16V	GRM36B103K16-PT	1	MURATA	
C532	CN 7570	CAPACITOR	CERAMIC CHIP	2200 pF	50V	GRM36B222K50-PT	1	MURATA	
C533	CN 7710	CAPACITOR	CERAMIC CHIP	0.01 uF	16V	GRM36B103K16-PT	1	MURATA	
C534	CN 7570	CAPACITOR	CERAMIC CHIP	2200 pF	50V	GRM36B222K50-PT	1	MURATA	
C535	CN 7710	CAPACITOR	CERAMIC CHIP	0.01 uF	16V	GRM36B103K16-PT	1	MURATA	
C536	CN 7570	CAPACITOR	CERAMIC CHIP	2200 pF	50V	GRM36B222K50-PT	1	MURATA	
C537	CN 7730	CAPACITOR	CERAMIC CHIP	0.1 uF	16V	GRM39B104K16-PT	1	MURATA	
C538	CN 6630	CAPACITOR	CERAMIC CHIP	0.1 uF	10V	GRM36B104K10-PT	1	MURATA	
C539	CT 3210	CAPACITOR	TANTALUM CHIP	3.3 uF	10V	TESVSP1A335M8R	1	NEC	
C540	CN 7710	CAPACITOR	CERAMIC CHIP	0.01 uF	16V	GRM36B103K16-PT	1	MURATA	
C541	CN 7710	CAPACITOR	CERAMIC CHIP	0.01 uF	16V	GRM36B103K16-PT	1	MURATA	
C542	CT 2640	CAPACITOR	TANTALUM CHIP	1 uF	16V	TEMSVA1C105M-8R	1	NEC	
C543	CN 8170	CAPACITOR	CERAMIC CHIP	47 pF	50V	GRM36CH470J50-PT	1	MURATA	
C544	CQ 9150	CAPACITOR	CERAMIC CHIP	0.1 uF	25V	GRM40B104K25-PT	1	MURATA	
C545	CQ 9150	CAPACITOR	CERAMIC CHIP	0.1 uF	25V	GRM40B104K25-PT	1	MURATA	
C546	CN 7570	CAPACITOR	CERAMIC CHIP	2200 pF	50V	GRM36B222K50-PT	1	MURATA	
C547						GRM36	0	MURATA	Not Used
C548						GRM36	0	MURATA	Not Used
C549	CN 7550	CAPACITOR	CERAMIC CHIP	1000 pF	50V	GRM36B102K50-PT	1	MURATA	
C550	CN 9420	CAPACITOR	CERAMIC CHIP	220 pF	25V	GRM36CH221J25-PT	1	MURATA	
C551						GRM39	0	MURATA	Not Used
C552						TESVSP	0	NEC	Not Used
C553	CN 7540	CAPACITOR	CERAMIC CHIP	680 pF	50V	GRM36B681K50-PT	1	MURATA	
C600						GRM36	0	MURATA	Not Used
C601	CN 8120	CAPACITOR	CERAMIC CHIP	22 pF	50V	GRM36CH220J50-PT	1	MURATA	
C602	CN 8120	CAPACITOR	CERAMIC CHIP	22 pF	50V	GRM36CH220J50-PT	1	MURATA	
C603	CN 8120	CAPACITOR	CERAMIC CHIP	22 pF	50V	GRM36CH220J50-PT	1	MURATA	
C604	CN 8120	CAPACITOR	CERAMIC CHIP	22 pF	50V	GRM36CH220J50-PT	1	MURATA	
C605	CN 8120	CAPACITOR	CERAMIC CHIP	22 pF	50V	GRM36CH220J50-PT	1	MURATA	
C606	CN 8120	CAPACITOR	CERAMIC CHIP	22 pF	50V	GRM36CH220J50-PT	1	MURATA	
C607	CN 8120	CAPACITOR	CERAMIC CHIP	22 pF	50V	GRM36CH220J50-PT	1	MURATA	
C608	CN 8120	CAPACITOR	CERAMIC CHIP	22 pF	50V	GRM36CH220J50-PT	1	MURATA	
C609	CN 8120	CAPACITOR	CERAMIC CHIP	22 pF	50V	GRM36CH220J50-PT	1	MURATA	
C610	CN 8120	CAPACITOR	CERAMIC CHIP	22 pF	50V	GRM36CH220J50-PT	1	MURATA	
C611	CN 8120	CAPACITOR	CERAMIC CHIP	22 pF	50V	GRM36CH220J50-PT	1	MURATA	
C612	CN 8120	CAPACITOR	CERAMIC CHIP	22 pF	50V	GRM36CH220J50-PT	1	MURATA	
C613	CN 8120	CAPACITOR	CERAMIC CHIP	22 pF	50V	GRM36CH220J50-PT	1	MURATA	
C614	CN 7570	CAPACITOR	CERAMIC CHIP	2200 pF	50V	GRM36B222K50-PT	1	MURATA	
C615	CN 6630	CAPACITOR	CERAMIC CHIP	0.1 uF	10V	GRM36B104K10PT	1	MURATA	
C616	CN 7570	CAPACITOR	CERAMIC CHIP	2200 pF	50V	GRM36B222K50-PT	1	MURATA	
C617	CN 6630	CAPACITOR	CERAMIC CHIP	0.1 uF	10V	GRM36B104K10PT	1	MURATA	
C618	CN 7570	CAPACITOR	CERAMIC CHIP	2200 pF	50V	GRM36B222K50-PT	1	MURATA	
C619	CN 6630	CAPACITOR	CERAMIC CHIP	0.1 uF	10V	GRM36B104K10PT	1	MURATA	
C620	CN 7570	CAPACITOR	CERAMIC CHIP	2200 pF	50V	GRM36B222K50-PT	1	MURATA	
C621	CS 1450	CAPACITOR	CERAMIC CHIP	2.2 uF	10V	C2012JB1A225KT	1	TDK	
C622	CN 6630	CAPACITOR	CERAMIC CHIP	0.1 uF	10V	GRM36B104K10PT	1	MURATA	
C623	CN 7570	CAPACITOR	CERAMIC CHIP	2200 pF	50V	GRM36B222K50-PT	1	MURATA	
C624	CN 6630	CAPACITOR	CERAMIC CHIP	0.1 uF	10V	GRM36B104K10PT	1	MURATA	
C625	CN 7570	CAPACITOR	CERAMIC CHIP	2200 pF	50V	GRM36B222K50-PT	1	MURATA	
C626	CN 6630	CAPACITOR	CERAMIC CHIP	0.1 uF	10V	GRM36B104K10PT	1	MURATA	
C627	CN 7570	CAPACITOR	CERAMIC CHIP	2200 pF	50V	GRM36B222K50-PT	1	MURATA	
C628	CS 1450	CAPACITOR	CERAMIC CHIP	2.2 uF	10V	C2012JB1A225KT	1	TDK	
C629	CN 8120	CAPACITOR	CERAMIC CHIP	22 pF	50V	GRM36CH220J50-PT	1	MURATA	
C630	CN 8120	CAPACITOR	CERAMIC CHIP	22 pF	50V	GRM36CH220J50-PT	1	MURATA	
C631	CN 8120	CAPACITOR	CERAMIC CHIP	22 pF	50V	GRM36CH220J50-PT	1	MURATA	
C632	CN 8120	CAPACITOR	CERAMIC CHIP	22 pF	50V	GRM36CH220J50-PT	1	MURATA	
C633	CN 8120	CAPACITOR	CERAMIC CHIP	22 pF	50V	GRM36CH220J50-PT	1	MURATA	
C634						TESVSP	0	NEC	Not Used
C635						GRM39	0	MURATA	Not Used
C636	CN 8120	CAPACITOR	CERAMIC CHIP	22 pF	50V	GRM36CH220J50-PT	1	MURATA	
C637						GRM36	0	MURATA	Not Used
C638						GRM36	0	MURATA	Not Used
C650	CN 7560	CAPACITOR	CERAMIC CHIP	1500 pF	50V	GRM36B152K50-PT	1	MURATA	
C652	CN 7560	CAPACITOR	CERAMIC CHIP	1500 pF	50V	GRM36B152K50-PT	1	MURATA	
C654	CN 6630	CAPACITOR	CERAMIC CHIP	0.1 uF	10V	GRM36B104K10PT	1	MURATA	
C655	CN 7570	CAPACITOR	CERAMIC CHIP	2200 pF	50V	GRM36B222K50-PT	1	MURATA	
C656	CS 1450	CAPACITOR	CERAMIC CHIP	2.2 uF	10V	C2012JB1A225KT	1	TDK	
C657	CN 6630	CAPACITOR	CERAMIC CHIP	0.1 uF	10V	GRM36B104K10-PT	1	MURATA	
C700	CN 8170	CAPACITOR	CERAMIC CHIP	47 pF	50V	GRM36CH470J50-PT	1	MURATA	
C701	CN 8170	CAPACITOR	CERAMIC CHIP	47 pF	50V	GRM36CH470J50-PT	1	MURATA	
C702	CN 7570	CAPACITOR	CERAMIC CHIP	2200 pF	50V	GRM36B222K50-PT	1	MURATA	
C703	CN 7570	CAPACITOR	CERAMIC CHIP	2200 pF	50V	GRM36B222K50-PT	1	MURATA	
C704	CN 7570	CAPACITOR	CERAMIC CHIP	2200 pF	50V	GRM36B222K50-PT	1	MURATA	
C705	CN 7570	CAPACITOR	CERAMIC CHIP	2200 pF	50V	GRM36B222K50-PT	1	MURATA	
C706	CN 7570	CAPACITOR	CERAMIC CHIP	2200 pF	50V	GRM36B222K50-PT	1	MURATA	
C711	CN 7570	CAPACITOR	CERAMIC CHIP	2200 pF	50V	GRM36B222K50-PT	1	MURATA	

## PARTS LIST : J725P/Pi VHF MAIN BOARD

SYMBOL	KDE_PARTS_No.	PARTS_NAME	PARTS_DESCRIPTION	FUNCTION DESIGNATION	VENDOR_ITEM_NBR	Q'ty	VENDOR_NAME	REMARKS
C712	CN 9420	CAPACITOR	CERAMIC CHIP	220 pF	25V GRM36CH221J25-PT	1	MURATA	
C713	CN 7710	CAPACITOR	CERAMIC CHIP	0.01 uF	16V GRM36B103K16-PT	1	MURATA	
C714	CN 7710	CAPACITOR	CERAMIC CHIP	0.01 uF	16V GRM36B103K16-PT	1	MURATA	
C715	CN 8200	CAPACITOR	CERAMIC CHIP	100 pF	50V GRM36CH101J50-PT	1	MURATA	
C716					GRM36	0	MURATA	Not Used
C717	CN 8170	CAPACITOR	CERAMIC CHIP	47 pF	50V GRM36CH470J50-PT	1	MURATA	
C718	CN 8170	CAPACITOR	CERAMIC CHIP	47 pF	50V GRM36CH470J50-PT	1	MURATA	
C719	CN 8170	CAPACITOR	CERAMIC CHIP	47 pF	50V GRM36CH470J50-PT	1	MURATA	
C720	CM 7590	CAPACITOR	CERAMIC CHIP	0.082 uF	16V GRM39B823K16-PT	1	MURATA	
C721	CN 7570	CAPACITOR	CERAMIC CHIP	2200 pF	50V GRM36B222K50-PT	1	MURATA	
C722	CN 7570	CAPACITOR	CERAMIC CHIP	2200 pF	50V GRM36B222K50-PT	1	MURATA	
C723	CN 7570	CAPACITOR	CERAMIC CHIP	2200 pF	50V GRM36B222K50-PT	1	MURATA	
C724	CN 6630	CAPACITOR	CERAMIC CHIP	0.1 uF	10V GRM36B104K10PT	1	MURATA	
C725	CN 7570	CAPACITOR	CERAMIC CHIP	2200 pF	50V GRM36B222K50-PT	1	MURATA	
C726	CN 9830	CAPACITOR	CERAMIC CHIP	0.1 uF	16V GRM36F104Z16-PT	1	MURATA	
C727	CM 7590	CAPACITOR	CERAMIC CHIP	0.082 uF	16V GRM39B823K16-PT	1	MURATA	
C728	CM 7590	CAPACITOR	CERAMIC CHIP	0.082 uF	16V GRM39B823K16-PT	1	MURATA	
C729	CN 7570	CAPACITOR	CERAMIC CHIP	2200 pF	50V GRM36B222K50-PT	1	MURATA	
C730	CN 7570	CAPACITOR	CERAMIC CHIP	2200 pF	50V GRM36B222K50-PT	1	MURATA	
C731	CN 8200	CAPACITOR	CERAMIC CHIP	100 pF	50V GRM36CH101J50-PT	1	MURATA	
C732	CN 8200	CAPACITOR	CERAMIC CHIP	100 pF	50V GRM36CH101J50-PT	1	MURATA	
C733	CN 8200	CAPACITOR	CERAMIC CHIP	100 pF	50V GRM36CH101J50-PT	1	MURATA	
C734	CN 8200	CAPACITOR	CERAMIC CHIP	100 pF	50V GRM36CH101J50-PT	1	MURATA	
C735	CN 8200	CAPACITOR	CERAMIC CHIP	100 pF	50V GRM36CH101J50-PT	1	MURATA	
C736	CN 7570	CAPACITOR	CERAMIC CHIP	2200 pF	50V GRM36B222K50-PT	1	MURATA	
C737	CN 7570	CAPACITOR	CERAMIC CHIP	2200 pF	50V GRM36B222K50-PT	1	MURATA	
C738	CN 7570	CAPACITOR	CERAMIC CHIP	2200 pF	50V GRM36B222K50-PT	1	MURATA	
C739	CN 8170	CAPACITOR	CERAMIC CHIP	47 pF	50V GRM36CH470J50-PT	1	MURATA	
C740	CN 8200	CAPACITOR	CERAMIC CHIP	100 pF	50V GRM36CH101J50-PT	1	MURATA	
C741	CN 8200	CAPACITOR	CERAMIC CHIP	100 pF	50V GRM36CH101J50-PT	1	MURATA	
C742	CN 7570	CAPACITOR	CERAMIC CHIP	2200 pF	50V GRM36B222K50-PT	1	MURATA	
C743	CN 7570	CAPACITOR	CERAMIC CHIP	2200 pF	50V GRM36B222K50-PT	1	MURATA	
C744	CN 7570	CAPACITOR	CERAMIC CHIP	2200 pF	50V GRM36B222K50-PT	1	MURATA	
C745	CN 7570	CAPACITOR	CERAMIC CHIP	2200 pF	50V GRM36B222K50-PT	1	MURATA	
C746	CN 7570	CAPACITOR	CERAMIC CHIP	2200 pF	50V GRM36B222K50-PT	1	MURATA	
C747	CN 7570	CAPACITOR	CERAMIC CHIP	2200 pF	50V GRM36B222K50-PT	1	MURATA	
C748	CN 7570	CAPACITOR	CERAMIC CHIP	2200 pF	50V GRM36B222K50-PT	1	MURATA	
C749	CN 7570	CAPACITOR	CERAMIC CHIP	2200 pF	50V GRM36B222K50-PT	1	MURATA	
C750	CN 8200	CAPACITOR	CERAMIC CHIP	100 pF	50V GRM36CH101J50-PT	1	MURATA	
C751	CN 8200	CAPACITOR	CERAMIC CHIP	100 pF	50V GRM36CH101J50-PT	1	MURATA	
C752	CN 8200	CAPACITOR	CERAMIC CHIP	100 pF	50V GRM36CH101J50-PT	1	MURATA	
C753	CN 8200	CAPACITOR	CERAMIC CHIP	100 pF	50V GRM36CH101J50-PT	1	MURATA	
C754	CN 7570	CAPACITOR	CERAMIC CHIP	2200 pF	50V GRM36B222K50-PT	1	MURATA	
C755	CN 7570	CAPACITOR	CERAMIC CHIP	2200 pF	50V GRM36B222K50-PT	1	MURATA	
C756	CN 8200	CAPACITOR	CERAMIC CHIP	100 pF	50V GRM36CH101J50-PT	1	MURATA	
C757	CN 8200	CAPACITOR	CERAMIC CHIP	100 pF	50V GRM36CH101J50-PT	1	MURATA	
C758	CN 8200	CAPACITOR	CERAMIC CHIP	100 pF	50V GRM36CH101J50-PT	1	MURATA	
C759	CN 8200	CAPACITOR	CERAMIC CHIP	100 pF	50V GRM36CH101J50-PT	1	MURATA	
C760	CN 8200	CAPACITOR	CERAMIC CHIP	100 pF	50V GRM36CH101J50-PT	1	MURATA	
C761	CN 8200	CAPACITOR	CERAMIC CHIP	100 pF	50V GRM36CH101J50-PT	1	MURATA	
C762	CN 7570	CAPACITOR	CERAMIC CHIP	2200 pF	50V GRM36B222K50-PT	1	MURATA	
C763	CN 7570	CAPACITOR	CERAMIC CHIP	2200 pF	50V GRM36B222K50-PT	1	MURATA	
C764					GRM36	0	MURATA	Not Used
C765					GRM36	0	MURATA	Not Used
C766	CN 7710	CAPACITOR	CERAMIC CHIP	0.01 uF	16V GRM36B103K16-PT	1	MURATA	
C767	CT 2770	CAPACITOR	TANTALUM CHIP	22 uF	16V TEMSVB21C226M-8R	1	NEC	
C901	CQ 9150	CAPACITOR	CERAMIC CHIP	0.1 uF	25V GRM40B104K25-PT	1	MURATA	
C902	CT 9670	CAPACITOR	TANTALUM CHIP	33 uF	10V F951A336MYC	1	NICHIKON	
C903	CN 7610	CAPACITOR	CERAMIC CHIP	330 pF	50V GRM36B331K50-PT	1	MURATA	
C904	CS 1450	CAPACITOR	CERAMIC CHIP	2.2 uF	10V C2012JB1A225KT	1	TDK	
C905	CN 8390	CAPACITOR	CERAMIC CHIP	0.047 uF	25V GRM39B473K25-PT	1	MURATA	
C906					TEMSVB	0	NEC	Not Used
C907	CT 2770	CAPACITOR	TANTALUM CHIP	22 uF	16V TEMSVB21C226M-8R	1	NEC	
C909					TEMSVA	0	NEC	Not Used
C910	CT 2770	CAPACITOR	TANTALUM CHIP	22 uF	16V TEMSVB21C226M-8R	1	NEC	
C911	CT 3220	CAPACITOR	TANTALUM CHIP	4.7 uF	10V TESVSP1A475M-8R	1	NEC	
C912	CS 1450	CAPACITOR	CERAMIC CHIP	2.2 uF	10V C2012JB1A225KT	1	TDK	
C913	CN 6630	CAPACITOR	CERAMIC CHIP	0.1 uF	10V GRM36B104K10PT	1	MURATA	
C914	CN 7710	CAPACITOR	CERAMIC CHIP	0.01 uF	16V GRM36B103K16-PT	1	MURATA	
C915	CN 6630	CAPACITOR	CERAMIC CHIP	0.1 uF	10V GRM36B104K10PT	1	MURATA	
C916	CS 1570	CAPACITOR	CERAMIC CHIP	3.3 uF	10V C2012JB1A335KT	1	TDK	
C917	CN 8720	CAPACITOR	CERAMIC CHIP	6800 pF	25V GRM36B682K25-PT	1	MURATA	
C918	CN 8170	CAPACITOR	CERAMIC CHIP	47 pF	50V GRM36CH470J50-PT	1	MURATA	
C919					C2012	0	TDK	Not Used
C920	CN 7570	CAPACITOR	CERAMIC CHIP	2200 pF	50V GRM36B222K50-PT	1	MURATA	
C921	CN 7570	CAPACITOR	CERAMIC CHIP	2200 pF	50V GRM36B222K50-PT	1	MURATA	
C922	CN 7610	CAPACITOR	CERAMIC CHIP	330 pF	50V GRM36B331K50-PT	1	MURATA	
C923	CM 7590	CAPACITOR	CERAMIC CHIP	0.082 uF	16V GRM39B823K16-PT	1	MURATA	
C924	CT 9670	CAPACITOR	TANTALUM CHIP	33 uF	10V F951A336MYC	1	NICHIKON	
C925	CN 7710	CAPACITOR	CERAMIC CHIP	0.01 uF	16V GRM36B103K16-PT	1	MURATA	
C926	CN 7570	CAPACITOR	CERAMIC CHIP	2200 pF	50V GRM36B222K50-PT	1	MURATA	
C927	CN 7570	CAPACITOR	CERAMIC CHIP	2200 pF	50V GRM36B222K50-PT	1	MURATA	
C928	CT 9670	CAPACITOR	TANTALUM CHIP	33 uF	10V F951A336MYC	1	NICHIKON	
C929	CN 6630	CAPACITOR	CERAMIC CHIP	0.1 uF	10V GRM36B104K10PT	1	MURATA	
C930	CT 3220	CAPACITOR	TANTALUM CHIP	4.7 uF	10V TESVSP1A475M-8R	1	NEC	
C931					TESVSP	0	NEC	Not Used
C933					TEMSVA	0	NEC	Not Used
C934	CN 7730	CAPACITOR	CERAMIC CHIP	0.1 uF	16V GRM39B104K16-PT	1	MURATA	
C935	CN 7730	CAPACITOR	CERAMIC CHIP	0.1 uF	16V GRM39B104K16-PT	1	MURATA	
C936	CN 7730	CAPACITOR	CERAMIC CHIP	0.1 uF	16V GRM39B104K16-PT	1	MURATA	
CR101	QV 4460	DIODE			1SS295-TE85R	1	TOSHIBA	
CR102	QV 8860	DIODE			MA77-TX	1	MATSHITA	
CR301	QV 9360	DIODE			DAP222-TL	1	ROHM	
CR401	QV 9600	DIODE			MURS110T3	1	MOTO	
CR500	QV 4650	DIODE			MA133-TX	1	Panasonic	
CR501					HSC278	0	Hitachi	Not Used
CR502					HSC278	0	Hitachi	Not Used
CR700	QV 8900	DIODE			MA713-TX	1	Panasonic	

## PARTS LIST : J725P/Pi VHF MAIN BOARD

SYMBOL	KDE_PARTS_No.	PARTS_NAME	PARTS_DESCRIPTION	FUNCTION DESIGNATION	VENDOR_ITEM_NBR	Q'ty	VENDOR_NAME	REMARKS
CR701	QV 4650	DIODE			MA133-TX	1	Panasonic	
CR702	QV 9360	DIODE			DAP222-TL	1	ROHM	
CR703	QV 9360	DIODE			DAP222-TL	1	ROHM	
CR704	QV 9360	DIODE			DAP222-TL	1	ROHM	
CR705	QV 9360	DIODE			DAP222-TL	1	ROHM	
CR706	QV 4650	DIODE			MA133-TX	1	Panasonic	
CR707	QV 4650	DIODE			MA133-TX	1	Panasonic	
CR708	QV 4650	DIODE			MA133-TX	1	Panasonic	
CR709	QV 4650	DIODE			MA133-TX	1	Panasonic	
CR810	QV 9630	DIODE ARRAY			NNCD7.5G-T1B	1	NEC	
CR811	QV 9630	DIODE ARRAY			NNCD7.5G-T1B	1	NEC	
CR812	QV 9630	DIODE ARRAY			NNCD7.5G-T1B	1	NEC	
CR813	QV 9630	DIODE ARRAY			NNCD7.5G-T1B	1	NEC	
CR814	QV 9620	DIODE ARRAY			NNCD12F-T1B	1	NEC	
CR815	QV 9630	DIODE ARRAY			NNCD7.5G-T1B	1	NEC	
CR816	QV 9630	DIODE ARRAY			NNCD7.5G-T1B	1	NEC	
CR817	QV 9620	DIODE ARRAY			NNCD12F-T1B	1	NEC	
CR818	QV 9620	DIODE ARRAY			NNCD12F-T1B	1	NEC	
CR900	QV 9590	DIODE			RB060L-40-TE25	1	ROHM	
CR901	QV 9360	DIODE			DAP222-TL	1	ROHM	
CR902	QV 9360	DIODE			DAP222-TL	1	ROHM	
F401	DG 0040	CHIP FUSE			451004	1	LITTELFUSE	
FL101	FG 1010	FILTER	BAND PASS FILTER		HF-23	1	KDE	
FL103	FG 0910	FILTER	CRYSTAL FILTER	115.65MHz	115SC8B 115.65MHz	1	NDK	
FL104	FG 0920	FILTER	CERAMIC FILTER	450kHz	CFUCG450EX-TC	1	MURATA	
FL105	FG 0980	FILTER	CERAMIC FILTER	450kHz	SFGCG450DX	1	MURATA	
FL106	FG 0940	FILTER	CERAMIC FILTER	450kHz	CFUCG450GX-TC	1	MURATA	
FL107	FG 0930	FILTER	CERAMIC FILTER	450kHz	CFUCG450FX-TC	1	MURATA	
J1	JD 9300	CONNECTOR			AXN340038P	1	NAIS	
J2	JD 9310	CONNECTOR			1-544989-1	1	AMP	
J3					AXK620345P	0	NAIS	Not Used
J4	JD 9340	PIN CONTACT UNIT			CMD-4215-874	1	YOKOWO	
J5	JD 9340	PIN CONTACT UNIT			CMD-4215-874	1	YOKOWO	
J201	JD 15880	PIN CONTACT UNIT			T-345072(G4UK07288)	1	DAIWAMUSEN	
L100	LC10000	INDUCTOR	INDUCTOR CHIP	47 nH	LL2012-F47NJ	1	TOKO	
L101	LC 9590	INDUCTOR	INDUCTOR CHIP	120 nH	LL2012-FR12J	1	TOKO	
L102	LG 0530	INDUCTOR	INDUCTOR CHIP	33 nH	LL1608-FH33NJ	1	TOKO	
L103	LC 9680	INDUCTOR	INDUCTOR CHIP	68 nH	LL2012-F68NJ	1	TOKO	
L104	LG 0560	INDUCTOR	INDUCTOR CHIP	56 nH	LL1608-FH56NJ	1	TOKO	
L105					LQN21	0	MURATA	Not Used
L106	LC 9440	INDUCTOR	INDUCTOR CHIP	100 nH	LL2012-FR10J	1	TOKO	
L107	LG 0550	INDUCTOR	INDUCTOR CHIP	47 nH	LL1608-FH47NJ	1	TOKO	
L108	LC 8960	INDUCTOR	INDUCTOR CHIP	220 nH	LL2012-FR22J	1	TOKO	
L109	LG 1150	INDUCTOR	INDUCTOR CHIP	220 nH	MLF2012DR22KT	1	TDK	
L111	LG 1150	INDUCTOR	INDUCTOR CHIP	220 nH	MLF2012DR22KT	1	TDK	
L112	LG 1150	INDUCTOR	INDUCTOR CHIP	220 nH	MLF2012DR22KT	1	TDK	
L151	LG 0530	INDUCTOR	INDUCTOR CHIP	33 nH	LL1608-FH33NJ	1	TOKO	
L152	LG 0530	INDUCTOR	INDUCTOR CHIP	33 nH	LL1608-FH33NJ	1	TOKO	
L154	LG 0510	INDUCTOR	INDUCTOR CHIP	22 nH	LL1608-FH22NJ	1	TOKO	
L170	LG 1130	INDUCTOR	INDUCTOR CHIP	120 nH	MLF1608DR12KT	1	TDK	
L171	LG 1130	INDUCTOR	INDUCTOR CHIP	120 nH	MLF1608DR12KT	1	TDK	
L172	LG 1110	INDUCTOR	CHIP EMIFIL	1 uH	BLM11A102SPT	1	MURATA	
L173	LG 1130	INDUCTOR	INDUCTOR CHIP	120 nH	MLF1608DR12KT	1	TDK	
L220					LL1608	0	TOKO	Not Used
L221	RR 0990	RESISTOR	METAL CHIP	0	MCR03EZHJ000	1	ROHM	
L222	LG 0580	INDUCTOR	INDUCTOR CHIP	82 nH	LL1608-FH82NJ	1	TOKO	
L223	LG 0560	INDUCTOR	INDUCTOR CHIP	56 nH	LL1608-FH56NJ	1	TOKO	
L224					LL1608	0	TOKO	Not Used
L225	LC 9740	INDUCTOR	INDUCTOR CHIP	100 nH	LQN21AR10J04	1	MURATA	
L226	LG 0490	INDUCTOR	INDUCTOR CHIP	15 nH	LL1608-FH15NJ	1	TOKO	
L227	RR 0990	RESISTOR	METAL CHIP	0	MCR03EZHJ000	1	ROHM	
L228	LG 0590	INDUCTOR	INDUCTOR CHIP	100 nH	LL1608-FHR10J	1	TOKO	
L229	LG 1250	INDUCTOR	CHIP EMIFIL	1uH	BLM11P300SPT	1	MURATA	
L251	LG 1180	INDUCTOR	INDUCTOR CHIP	82 nH	EXCML20A390U	1	MATUSHITA	
L301	LG 1120	INDUCTOR	INDUCTOR CHIP	2.2 mH	LOH4N222J04T1	1	MURATA	
L302	LG 1190	INDUCTOR	INDUCTOR CHIP	3.3 uH	MLF1608A3R3KT	1	TDK	
L303	LG 1120	INDUCTOR	INDUCTOR CHIP	2.2 mH	LOH4N222J04T1	1	MURATA	
L304	LG 1110	INDUCTOR	CHIP EMIFIL	1uH	BLM11A102SPT	1	MURATA	
L401	LG 1110	INDUCTOR	CHIP EMIFIL	1uH	BLM11A102SPT	1	MURATA	
L402	LG 1110	INDUCTOR	CHIP EMIFIL	1uH	BLM11A102SPT	1	MURATA	
L403	LG 1110	INDUCTOR	CHIP EMIFIL	1uH	BLM11A102SPT	1	MURATA	
L404	LC 9740	INDUCTOR	INDUCTOR CHIP	100 nH	LQN21AR10J04	1	MURATA	
L600	LG 1110	INDUCTOR	CHIP EMIFIL	1uH	BLM11A102SPT	1	MURATA	
L900	LG 1160	INDUCTOR	INDUCTOR CHIP	33uH	A682AE-330M=P3	1	TOKO	
L901	LG 1170	INDUCTOR	INDUCTOR CHIP	10uH	NL322522T-100J	1	TDK	
L902	LG 1100	INDUCTOR	CHIP EMIFIL	10nH	HF50ACB-201209	1	TDK	
L903	LG 1100	INDUCTOR	CHIP EMIFIL	10nH	HF50ACB-201209	1	TDK	
L904	LG 1110	INDUCTOR	CHIP EMIFIL	1uH	BLM11A102SPT	1	MURATA	
Q101	QT 7250	TRANSISTOR			2SC5006-T1	1	NEC	
Q102	QT 7250	TRANSISTOR			2SC5006-T1	1	NEC	
Q103	QT 7250	TRANSISTOR			2SC5006-T1	1	NEC	
Q105	QC 4070	TRANSISTOR			DTC114YE-TL	1	ROHM	
Q106	QT 7250	TRANSISTOR			2SC5006-T1	1	NEC	
Q107	QC 4070	TRANSISTOR			DTC114YE-TL	1	ROHM	
Q202	OD 0260	TRANSISTOR			2SK3077	1	TOSHIBA	
Q301	QR10030	TRANSISTOR			2SC4617-TL-R	1	ROHM	
Q302	QR10030	TRANSISTOR			2SC4617-TL-R	1	ROHM	
Q303	QR10080	TRANSISTOR			UMC5N-TR	1	ROHM	
Q304	QR10080	TRANSISTOR			UMC5N-TR	1	ROHM	
Q307	QR10730	TRANSISTOR			SST3904-T116	1	ROHM	
Q401	QC 4070	TRANSISTOR			DTC114YE-TL	1	ROHM	
Q402	QR10080	TRANSISTOR			UMC5N-TR	1	ROHM	
Q403	QR 1460	TRANSISTOR			DTB143EC-T116	1	ROHM	
Q405	QC 4070	TRANSISTOR			DTC114YE-TL	1	ROHM	
Q421	QR10030	TRANSISTOR			2SC4617-TL-R	1	ROHM	
Q422	QR10800	TRANSISTOR			2SB1121S-TD	1	SANYO	
Q500	QR10790	TRANSISTOR			IMX3-T108	1	ROHM	
Q501	QU 0280	FET			2SJ484-WY-TR	1	HITACHI	

**PARTS LIST : J725P/Pi VHF MAIN BOARD**

SYMBOL	KDE_PARTS_No.	PARTS_NAME	PARTS_DESCRIPTION	FUNCTION DESIGNATION	VENDOR_ITEM_NBR	Q'ty	VENDOR_NAME	REMARKS
Q700	QR10730	TRANSISTOR			SST3904-T116	1	ROHM	
Q701	QR10740	TRANSISTOR			SST3906-T116	1	ROHM	
Q702	QR10780	TRANSISTOR			BCW33-T116	1	ROHM	
Q703	QR10730	TRANSISTOR			SST3904-T116	1	ROHM	
Q704	QR10740	TRANSISTOR			SST3906-T116	1	ROHM	
Q705	QR10760	TRANSISTOR			2SB1132-T100	1	ROHM	
Q706	QR10780	TRANSISTOR			BCW33-T116	1	ROHM	
Q707	QR10780	TRANSISTOR			BCW33-T116	1	ROHM	
Q900	QR10750	TRANSISTOR			RN1308-TE85L	1	TOSHIBA	
Q901	QR10740	TRANSISTOR			SST3906-T116	1	ROHM	
Q902	QR10740	TRANSISTOR			SST3906-T116	1	ROHM	
Q903	QR10730	TRANSISTOR			SST3904-T116	1	ROHM	
Q904	QR10750	TRANSISTOR			RN1308-TE85L	1	TOSHIBA	
R101	RR 7520	RESISTOR	METAL CHIP	100k OHM	0.06W MCR01MZSJ104	1	ROHM	
R102	RR 7220	RESISTOR	METAL CHIP	150 OHM	0.06W MCR01MZSJ151	1	ROHM	
R103	RR 7270	RESISTOR	METAL CHIP	470 OHM	0.06W MCR01MZSJ471	1	ROHM	
R104	RR 7150	RESISTOR	METAL CHIP	33 OHM	0.06W MCR01MZSJ330	1	ROHM	
R105	RR 7220	RESISTOR	METAL CHIP	150 OHM	0.06W MCR01MZSJ151	1	ROHM	
R106	RR 7150	RESISTOR	METAL CHIP	33 OHM	0.06W MCR01MZSJ330	1	ROHM	
R107	RR 7520	RESISTOR	METAL CHIP	100k OHM	0.06W MCR01MZSJ104	1	ROHM	
R108	RR 7340	RESISTOR	METAL CHIP	2.2k OHM	0.06W MCR01MZSJ222	1	ROHM	
R109					0.06W MCR01	0	ROHM	Not Used
R110	RR 7210	RESISTOR	METAL CHIP	100 OHM	0.06W MCR01MZSJ101	1	ROHM	
R111	RR 7160	RESISTOR	METAL CHIP	47 OHM	0.06W MCR01MZSJ470	1	ROHM	
R112	RR 7220	RESISTOR	METAL CHIP	150 OHM	0.06W MCR01MZSJ151	1	ROHM	
R113	RR 7110	RESISTOR	METAL CHIP	0 OHM	0.06W MCR01MZSJ000	1	ROHM	
R114	RR 7110	RESISTOR	METAL CHIP	0 OHM	0.06W MCR01MZSJ000	1	ROHM	
R131	RR 7520	RESISTOR	METAL CHIP	100k OHM	0.06W MCR01MZSJ104	1	ROHM	
R132	RR 7520	RESISTOR	METAL CHIP	100k OHM	0.06W MCR01MZSJ104	1	ROHM	
R133	RR 7210	RESISTOR	METAL CHIP	100 OHM	0.06W MCR01MZSJ101	1	ROHM	
R134	RR 7440	RESISTOR	METAL CHIP	22k OHM	0.06W MCR01MZSJ223	1	ROHM	
R135	RR 7410	RESISTOR	METAL CHIP	10k OHM	0.06W MCR01MZSJ103	1	ROHM	
R136	RR 7150	RESISTOR	METAL CHIP	33 OHM	0.06W MCR01MZSJ330	1	ROHM	
R137	RR 7520	RESISTOR	METAL CHIP	100k OHM	0.06W MCR01MZSJ104	1	ROHM	
R138	RR 7520	RESISTOR	METAL CHIP	100k OHM	0.06W MCR01MZSJ104	1	ROHM	
R139	RR 7210	RESISTOR	METAL CHIP	100 OHM	0.06W MCR01MZSJ101	1	ROHM	
R150					0.06W MCR01	0	ROHM	Not Used
R151	RR 7210	RESISTOR	METAL CHIP	100 OHM	0.06W MCR01MZSJ101	1	ROHM	
R152	RR 7500	RESISTOR	METAL CHIP	68k OHM	0.06W MCR01MZSJ683	1	ROHM	
R153					0.06W MCR01	0	ROHM	Not Used
R154	RR 7240	RESISTOR	METAL CHIP	220 OHM	0.06W MCR01MZSJ221	1	ROHM	
R155	RR 7140	RESISTOR	METAL CHIP	22 OHM	0.06W MCR01MZSJ220	1	ROHM	
R156	RR 7240	RESISTOR	METAL CHIP	220 OHM	0.06W MCR01MZSJ221	1	ROHM	
R171	RR 7440	RESISTOR	METAL CHIP	22k OHM	0.06W MCR01MZSJ223	1	ROHM	
R172	RR 7120	RESISTOR	METAL CHIP	10 OHM	0.06W MCR01MZSJ100	1	ROHM	
R173	RR 7340	RESISTOR	METAL CHIP	2.2k OHM	0.06W MCR01MZSJ222	1	ROHM	
R174	RR 7410	RESISTOR	METAL CHIP	10k OHM	0.06W MCR01MZSJ103	1	ROHM	
R205	RR 7310	RESISTOR	METAL CHIP	1k OHM	0.06W MCR01MZSJ102	1	ROHM	
R209					0.06W MCR01	0	ROHM	Not Used
R211	RR 7490	RESISTOR	METAL CHIP	56k OHM	0.06W MCR01MZSJ563	1	ROHM	
R215	RR 7480	RESISTOR	METAL CHIP	47k OHM	0.06W MCR01MZSJ473	1	ROHM	
R218					0.06W MCR01	0	ROHM	Not Used
R221	RR 7170	RESISTOR	METAL CHIP	68 OHM	0.06W MCR01MZSJ680	1	ROHM	
R222	RR 7230	RESISTOR	METAL CHIP	180 OHM	0.06W MCR01MZSJ181	1	ROHM	
R223	RR 7170	RESISTOR	METAL CHIP	68 OHM	0.06W MCR01MZSJ680	1	ROHM	
R224	RR 7240	RESISTOR	METAL CHIP	220 OHM	0.06W MCR01MZSJ221	1	ROHM	
R231	RR 7710	RESISTOR	METAL CHIP	4.7 OHM	0.06W MCR01MZSJ477	1	ROHM	
R232					0.06W MCR01	0	ROHM	Not Used
R233	RR 7600	RESISTOR	METAL CHIP	680k OHM	0.06W MCR01MZSJ684	1	ROHM	
R234	RR 7520	RESISTOR	METAL CHIP	100k OHM	0.06W MCR01MZSJ104	1	ROHM	
R235	RR 7520	RESISTOR	METAL CHIP	100k OHM	0.06W MCR01MZSJ104	1	ROHM	
R236	RR 7520	RESISTOR	METAL CHIP	100k OHM	0.06W MCR01MZSJ104	1	ROHM	
R241	RR 7380	RESISTOR	METAL CHIP	6.8k OHM	0.06W MCR01MZSJ682	1	ROHM	
R242	RR 7710	RESISTOR	METAL CHIP	4.7 OHM	0.06W MCR01MZSJ477	1	ROHM	
R243	RR 7340	RESISTOR	METAL CHIP	2.2k OHM	0.06W MCR01MZSJ222	1	ROHM	
R244	RR 7320	RESISTOR	METAL CHIP	1.5k OHM	0.06W MCR01MZSJ152	1	ROHM	
R245	RR 7130	RESISTOR	METAL CHIP	15 OHM	0.06W MCR01MZSJ150	1	ROHM	
R246	RR 7270	RESISTOR	METAL CHIP	470 OHM	0.06W MCR01MZSJ471	1	ROHM	
R247	RR 7270	RESISTOR	METAL CHIP	470 OHM	0.06W MCR01MZSJ471	1	ROHM	
R301	RR 7150	RESISTOR	METAL CHIP	33 OHM	0.06W MCR01MZSJ330	1	ROHM	
R302	RR 7480	RESISTOR	METAL CHIP	47k OHM	0.06W MCR01MZSJ473	1	ROHM	
R303	RR 7110	RESISTOR	METAL CHIP	0 OHM	0.06W MCR01MZSJ000	1	ROHM	
R304	RR 7310	RESISTOR	METAL CHIP	1k OHM	0.06W MCR01MZSJ102	1	ROHM	
R305	RR 7310	RESISTOR	METAL CHIP	1k OHM	0.06W MCR01MZSJ102	1	ROHM	
R306	RR 7310	RESISTOR	METAL CHIP	1k OHM	0.06W MCR01MZSJ102	1	ROHM	
R307	RR 7310	RESISTOR	METAL CHIP	1k OHM	0.06W MCR01MZSJ102	1	ROHM	
R308	RR 7120	RESISTOR	METAL CHIP	10 OHM	0.06W MCR01MZSJ100	1	ROHM	
R309	RR 7210	RESISTOR	METAL CHIP	100 OHM	0.06W MCR01MZSJ101	1	ROHM	
R310	RR 7370	RESISTOR	METAL CHIP	4.7k OHM	0.06W MCR01MZSJ472	1	ROHM	
R311	RR 7370	RESISTOR	METAL CHIP	4.7k OHM	0.06W MCR01MZSJ472	1	ROHM	
R312	RR 7520	RESISTOR	METAL CHIP	100k OHM	0.06W MCR01MZSJ104	1	ROHM	
R313	RR 7370	RESISTOR	METAL CHIP	4.7k OHM	0.06W MCR01MZSJ472	1	ROHM	
R314	RR 7480	RESISTOR	METAL CHIP	47k OHM	0.06W MCR01MZSJ473	1	ROHM	
R315	RR 7270	RESISTOR	METAL CHIP	470 OHM	0.06W MCR01MZSJ471	1	ROHM	
R316	RR 7350	RESISTOR	METAL CHIP	3.3k OHM	0.06W MCR01MZSJ332	1	ROHM	
R317					0.06W MCR01	0	ROHM	Not Used
R318	RR 7340	RESISTOR	METAL CHIP	2.2k OHM	0.06W MCR01MZSJ222	1	ROHM	
R319	RR 7110	RESISTOR	METAL CHIP	0 OHM	0.06W MCR01MZSJ000	1	ROHM	
R320	RR 7110	RESISTOR	METAL CHIP	0 OHM	0.06W MCR01MZSJ000	1	ROHM	
R321	RR 7240	RESISTOR	METAL CHIP	220 OHM	0.06W MCR01MZSJ221	1	ROHM	
R322	RR 7210	RESISTOR	METAL CHIP	100 OHM	0.06W MCR01MZSJ101	1	ROHM	
R323	RR 6840	RESISTOR	METAL CHIP	560 OHM	0.06W MCR01MZSJ561	1	ROHM	
R324					0.06W MCR01	0	ROHM	Not Used
R325	RR 7170	RESISTOR	METAL CHIP	68 OHM	0.06W MCR01MZSJ680	1	ROHM	
R326	RR 7340	RESISTOR	METAL CHIP	2.2k OHM	0.06W MCR01MZSJ222	1	ROHM	
R327	RR 7110	RESISTOR	METAL CHIP	0 OHM	0.06W MCR01MZSJ000	1	ROHM	
R328	RR 7440	RESISTOR	METAL CHIP	22k OHM	0.06W MCR01MZSJ223	1	ROHM	
R329	RR 7520	RESISTOR	METAL CHIP	100k OHM	0.06W MCR01MZSJ104	1	ROHM	

**PARTS LIST : J725P/Pi VHF MAIN BOARD**

SYMBOL	KDE PARTS No.	PARTS NAME	PARTS DESCRIPTION	FUNCTION DESIGNATION	VENDOR ITEM_NBR	Q'ty	VENDOR_NAME	REMARKS
R330	RR 7520	RESISTOR	METAL CHIP	100k OHM	0.06W MCR01MZSJ104	1	ROHM	
R331	RR 7110	RESISTOR	METAL CHIP	0 OHM	0.06W MCR01MZSJ000	1	ROHM	
R332	RR 7210	RESISTOR	METAL CHIP	100 OHM	0.06W MCR01MZSJ101	1	ROHM	
R333	RR 7210	RESISTOR	METAL CHIP	100 OHM	0.06W MCR01MZSJ101	1	ROHM	
R334	RR 7210	RESISTOR	METAL CHIP	100 OHM	0.06W MCR01MZSJ101	1	ROHM	
R335	RR 7110	RESISTOR	METAL CHIP	0 OHM	0.06W MCR01MZSJ000	1	ROHM	
R336	RR 7310	RESISTOR	METAL CHIP	1k OHM	0.06W MCR01MZSJ102	1	ROHM	
R338	RR 7310	RESISTOR	METAL CHIP	1k OHM	0.06W MCR01MZSJ102	1	ROHM	
R339	RR 7260	RESISTOR	METAL CHIP	330 OHM	0.06W MCR01MZSJ331	1	ROHM	
R340	RR 7260	RESISTOR	METAL CHIP	330 OHM	0.06W MCR01MZSJ331	1	ROHM	
R341	RR 7160	RESISTOR	METAL CHIP	47 OHM	0.06W MCR01MZSJ470	1	ROHM	
R342	RR 7160	RESISTOR	METAL CHIP	47 OHM	0.06W MCR01MZSJ470	1	ROHM	
R343	RR 7210	RESISTOR	METAL CHIP	100 OHM	0.06W MCR01MZSJ101	1	ROHM	
R344	RR 7270	RESISTOR	METAL CHIP	470 OHM	0.06W MCR01MZSJ471	1	ROHM	
R345	RR 6840	RESISTOR	METAL CHIP	560 OHM	0.06W MCR01MZSJ561	1	ROHM	
R346	RR 7110	RESISTOR	METAL CHIP	0 OHM	0.06W MCR01MZSJ000	1	ROHM	
R349	RR 7110	RESISTOR	METAL CHIP	0 OHM	0.06W MCR01MZSJ000	1	ROHM	
R351					0.06W MCR01	0	ROHM	Not Used
R352	RR 7480	RESISTOR	METAL CHIP	47k OHM	0.06W MCR01MZSJ473	1	ROHM	
R353	RR 7640	RESISTOR	METAL CHIP	390k OHM	0.06W MCR01MZSJ394	1	ROHM	
R354	RR 7110	RESISTOR	METAL CHIP	0 OHM	0.06W MCR01MZSJ000	1	ROHM	
R355	RR 7520	RESISTOR	METAL CHIP	100k OHM	0.06W MCR01MZSJ104	1	ROHM	
R356	RR 6850	RESISTOR	METAL CHIP	820k OHM	0.06W MCR01MZSJ824	1	ROHM	
R401	RR 7520	RESISTOR	METAL CHIP	100k OHM	0.06W MCR01MZSJ104	1	ROHM	
R402	RR 7520	RESISTOR	METAL CHIP	100k OHM	0.06W MCR01MZSJ104	1	ROHM	
R421	RR 7380	RESISTOR	METAL CHIP	6.8k OHM	0.06W MCR01MZSJ682	1	ROHM	
R422	RR 7410	RESISTOR	METAL CHIP	10k OHM	0.06W MCR01MZSJ103	1	ROHM	
R423	RR 7410	RESISTOR	METAL CHIP	10k OHM	0.06W MCR01MZSJ103	1	ROHM	
R424	RR 7410	RESISTOR	METAL CHIP	10k OHM	0.06W MCR01MZSJ103	1	ROHM	
R425	RR 7540	RESISTOR	METAL CHIP	150k OHM	0.06W MCR01MZSJ154	1	ROHM	
R426	RR 7380	RESISTOR	METAL CHIP	6.8k OHM	0.06W MCR01MZSJ682	1	ROHM	
R427	RR 7410	RESISTOR	METAL CHIP	10k OHM	0.06W MCR01MZSJ103	1	ROHM	
R428	RR 7210	RESISTOR	METAL CHIP	100 OHM	0.06W MCR01MZSJ101	1	ROHM	
R429	RR 7380	RESISTOR	METAL CHIP	6.8k OHM	0.06W MCR01MZSJ682	1	ROHM	
R430	RR 7440	RESISTOR	METAL CHIP	22k OHM	0.06W MCR01MZSJ223	1	ROHM	
R431	RR 0350	RESISTOR	METAL CHIP	200 OHM	0.1W MCR10EZHF2000	1	ROHM	
R432	RR 0350	RESISTOR	METAL CHIP	200 OHM	0.1W MCR10EZHF2000	1	ROHM	
R433	RR 0350	RESISTOR	METAL CHIP	200 OHM	0.1W MCR10EZHF2000	1	ROHM	
R434	RR 0350	RESISTOR	METAL CHIP	200 OHM	0.1W MCR10EZHF2000	1	ROHM	
R437	RR 7110	RESISTOR	METAL CHIP	0 OHM	0.06W MCR01MZSJ000	1	ROHM	
R500	RJ 1440	RESISTOR ARRAY	METAL CHIP	10k OHM	0.03W MNR04MOABJ102	1	ROHM	
R501	RJ 1440	RESISTOR ARRAY	METAL CHIP	10k OHM	0.03W MNR04MOABJ102	1	ROHM	
R503	RR 7480	RESISTOR	METAL CHIP	47k OHM	0.06W MCR01MZSJ473	1	ROHM	
R504	RR 7580	RESISTOR	METAL CHIP	470k OHM	0.06W MCR01MZSJ474	1	ROHM	
R505	RR 0080	RESISTOR	METAL CHIP	100k OHM	0.06W MCR01MZSF1003	1	ROHM	
R506	RR 0080	RESISTOR	METAL CHIP	100k OHM	0.06W MCR01MZSF1003	1	ROHM	
R507	RR 7410	RESISTOR	METAL CHIP	10k OHM	0.06W MCR01MZSJ103	1	ROHM	
R508	RR 0070	RESISTOR	METAL CHIP	10k OHM	0.06W MCR01MZSF1002	1	ROHM	
R509	RR 7410	RESISTOR	METAL CHIP	10k OHM	0.06W MCR01MZSJ103	1	ROHM	
R510	RR 7310	RESISTOR	METAL CHIP	1k OHM	0.06W MCR01MZSJ102	1	ROHM	
R511	RR 7520	RESISTOR	METAL CHIP	100k OHM	0.06W MCR01MZSJ104	1	ROHM	
R512	RR 7440	RESISTOR	METAL CHIP	22k OHM	0.06W MCR01MZSJ223	1	ROHM	
R513	RR 7440	RESISTOR	METAL CHIP	22k OHM	0.06W MCR01MZSJ223	1	ROHM	
R514	RR 7480	RESISTOR	METAL CHIP	47k OHM	0.06W MCR01MZSJ473	1	ROHM	
R515	RR 7520	RESISTOR	METAL CHIP	100k OHM	0.06W MCR01MZSJ104	1	ROHM	
R516	RR 7440	RESISTOR	METAL CHIP	22k OHM	0.06W MCR01MZSJ223	1	ROHM	
R517	RR 7340	RESISTOR	METAL CHIP	2.2k OHM	0.06W MCR01MZSJ222	1	ROHM	
R518					0.06W MCR01	0	ROHM	Not Used
R519	RR 6880	RESISTOR	METAL CHIP	820 OHM	0.06W MCR01MZSJ821	1	ROHM	
R520	RR 7480	RESISTOR	METAL CHIP	47k OHM	0.06W MCR01MZSJ473	1	ROHM	
R521	RR 7520	RESISTOR	METAL CHIP	100k OHM	0.06W MCR01MZSJ104	1	ROHM	
R522	RR 7520	RESISTOR	METAL CHIP	100k OHM	0.06W MCR01MZSJ104	1	ROHM	
R523	RR 7500	RESISTOR	METAL CHIP	68k OHM	0.06W MCR01MZSJ683	1	ROHM	
R524	RR 7410	RESISTOR	METAL CHIP	10k OHM	0.06W MCR01MZSJ103	1	ROHM	
R525	RR 7520	RESISTOR	METAL CHIP	100k OHM	0.06W MCR01MZSJ104	1	ROHM	
R526	RR 7520	RESISTOR	METAL CHIP	100k OHM	0.06W MCR01MZSJ104	1	ROHM	
R527	RR 7400	RESISTOR	METAL CHIP	120k OHM	0.06W MCR01MZSJ124	1	ROHM	
R528	RR 7520	RESISTOR	METAL CHIP	100k OHM	0.06W MCR01MZSJ104	1	ROHM	
R529	RR 7480	RESISTOR	METAL CHIP	47k OHM	0.06W MCR01MZSJ473	1	ROHM	
R530	RR 6840	RESISTOR	METAL CHIP	560 OHM	0.06W MCR01MZSJ561	1	ROHM	
R531	RR 7410	RESISTOR	METAL CHIP	10k OHM	0.06W MCR01MZSJ103	1	ROHM	
R532	RR 7490	RESISTOR	METAL CHIP	56k OHM	0.06W MCR01MZSJ563	1	ROHM	
R533	RR 7410	RESISTOR	METAL CHIP	10k OHM	0.06W MCR01MZSJ103	1	ROHM	
R534	RR 7710	RESISTOR	METAL CHIP	4.7 OHM	0.06W MCR01MZSJ47	1	ROHM	
R535	RR 7710	RESISTOR	METAL CHIP	4.7 OHM	0.06W MCR01MZSJ47	1	ROHM	
R536	RR 7340	RESISTOR	METAL CHIP	2.2k OHM	0.06W MCR01MZSJ222	1	ROHM	
R537	RR 7520	RESISTOR	METAL CHIP	100k OHM	0.06W MCR01MZSJ104	1	ROHM	
R538	RR 7520	RESISTOR	METAL CHIP	100k OHM	0.06W MCR01MZSJ104	1	ROHM	
R539	RR 7480	RESISTOR	METAL CHIP	47k OHM	0.06W MCR01MZSJ473	1	ROHM	
R540	RR 7570	RESISTOR	METAL CHIP	330k OHM	0.06W MCR01MZSJ334	1	ROHM	
R541	RR 7520	RESISTOR	METAL CHIP	100k OHM	0.06W MCR01MZSJ104	1	ROHM	
R542	RR 7480	RESISTOR	METAL CHIP	47k OHM	0.06W MCR01MZSJ473	1	ROHM	
R543	RR 7480	RESISTOR	METAL CHIP	47k OHM	0.06W MCR01MZSJ473	1	ROHM	
R544	RL 2200	THERMISTOR	METAL CHIP		TN203H103KT	1	Mitsubishi M.	
R545	RR 7550	RESISTOR	METAL CHIP	220k OHM	0.06W MCR01MZSJ224	1	ROHM	
R546	RR 7210	RESISTOR	METAL CHIP	100 OHM	0.06W MCR01MZSJ101	1	ROHM	
R547	RR 7110	RESISTOR	METAL CHIP	0 OHM	0.06W MCR01MZSJ000	1	ROHM	
R548	RR 7110	RESISTOR	METAL CHIP	0 OHM	0.06W MCR01MZSJ000	1	ROHM	
R549	RR 7110	RESISTOR	METAL CHIP	0 OHM	0.06W MCR01MZSJ000	1	ROHM	
R550	RR 7110	RESISTOR	METAL CHIP	0 OHM	0.06W MCR01MZSJ000	1	ROHM	
R551	RR 7550	RESISTOR	METAL CHIP	220k OHM	0.06W MCR01MZSJ224	1	ROHM	
R600	RR 7240	RESISTOR	METAL CHIP	220 OHM	0.06W MCR01MZSJ221	1	ROHM	
R601	RJ 1460	RESISTOR ARRAY	METAL CHIP	220 OHM	0.03W MNR04MOABJ221	1	ROHM	
R602	RJ 1460	RESISTOR ARRAY	METAL CHIP	220 OHM	0.03W MNR04MOABJ221	1	ROHM	
R603	RR 7240	RESISTOR	METAL CHIP	220 OHM	0.06W MCR01MZSJ221	1	ROHM	
R604	RR 7240	RESISTOR	METAL CHIP	220 OHM	0.06W MCR01MZSJ221	1	ROHM	
R605	RR 7480	RESISTOR	METAL CHIP	47k OHM	0.06W MCR01MZSJ473	1	ROHM	
R606					0.06W MCR01MZSJ	0	ROHM	Not Used



**PARTS LIST : J725P/Pi VHF MAIN BOARD**

SYMBOL	KDE_PARTS_No.	PARTS_NAME	PARTS_DESCRIPTION	FUNCTION DESIGNATION	VENDOR_ITEM_NBR	Q'ty	VENDOR_NAME	REMARKS
R607					0.06W MCR01MZSJ	0	ROHM	Not Used
R608					0.06W MCR01MZSJ	0	ROHM	Not Used
R609	RR 7410	RESISTOR	METAL CHIP	10k OHM	0.06W MCR01MZSJ103	1	ROHM	
R610	RR 7410	RESISTOR	METAL CHIP	10k OHM	0.06W MCR01MZSJ103	1	ROHM	
R611	RR 7160	RESISTOR	METAL CHIP	47 OHM	0.06W MCR01MZSJ470	1	ROHM	
R612	RR 7410	RESISTOR	METAL CHIP	10k OHM	0.06W MCR01MZSJ103	1	ROHM	
R613	RR 7410	RESISTOR	METAL CHIP	10k OHM	0.06W MCR01MZSJ103	1	ROHM	
R614	RR 7410	RESISTOR	METAL CHIP	10k OHM	0.06W MCR01MZSJ103	1	ROHM	
R615	RR 7410	RESISTOR	METAL CHIP	10k OHM	0.06W MCR01MZSJ103	1	ROHM	
R616	RR 7410	RESISTOR	METAL CHIP	10k OHM	0.06W MCR01MZSJ103	1	ROHM	
R617					0.06W MCR01MZSJ	0	ROHM	Not Used
R618					0.06W MCR01MZSJ	0	ROHM	Not Used
R619					0.06W MCR01MZSJ	0	ROHM	Not Used
R620					0.06W MCR01MZSJ	0	ROHM	Not Used
R621					0.06W MCR01MZSJ	0	ROHM	Not Used
R622					0.06W MCR01MZSJ	0	ROHM	Not Used
R623					0.06W MCR01MZSJ	0	ROHM	Not Used
R624					0.06W MCR01MZSJ	0	ROHM	Not Used
R625	RR 7240	RESISTOR	METAL CHIP	220 OHM	0.06W MCR01MZSJ221	1	ROHM	
R626	RR 7410	RESISTOR	METAL CHIP	10k OHM	0.06W MCR01MZSJ103	1	ROHM	
R627	RR 7240	RESISTOR	METAL CHIP	220 OHM	0.06W MCR01MZSJ221	1	ROHM	
R628	RR 7240	RESISTOR	METAL CHIP	220 OHM	0.06W MCR01MZSJ221	1	ROHM	
R629	RR 7410	RESISTOR	METAL CHIP	10k OHM	0.06W MCR01MZSJ103	1	ROHM	
R630	RR 7410	RESISTOR	METAL CHIP	10k OHM	0.06W MCR01MZSJ103	1	ROHM	
R631	RR 7240	RESISTOR	METAL CHIP	220 OHM	0.06W MCR01MZSJ221	1	ROHM	
R632					0.06W MCR01MZSJ	0	ROHM	Not Used
R633					0.06W MCR01MZSJ	0	ROHM	Not Used
R634	RR 7480	RESISTOR	METAL CHIP	47k OHM	0.06W MCR01MZSJ473	1	ROHM	
R635	RR 7410	RESISTOR	METAL CHIP	10k OHM	0.06W MCR01MZSJ103	1	ROHM	
R636	RR 7240	RESISTOR	METAL CHIP	220 OHM	0.06W MCR01MZSJ221	1	ROHM	
R637	RR 7240	RESISTOR	METAL CHIP	220 OHM	0.06W MCR01MZSJ221	1	ROHM	
R638	RR 7240	RESISTOR	METAL CHIP	220 OHM	0.06W MCR01MZSJ221	1	ROHM	
R639	RR 7410	RESISTOR	METAL CHIP	10k OHM	0.06W MCR01MZSJ103	1	ROHM	
R640					0.06W MCR01MZSJ	0	ROHM	Not Used
R641	RR 7240	RESISTOR	METAL CHIP	220 OHM	0.06W MCR01MZSJ221	1	ROHM	
R642	RR 7240	RESISTOR	METAL CHIP	220 OHM	0.06W MCR01MZSJ221	1	ROHM	
R643					0.06W MCR01MZSJ	0	ROHM	Not Used
R644					0.06W MCR01MZSJ	0	ROHM	Not Used
R645					0.06W MCR01MZSJ	0	ROHM	Not Used
R646					0.06W MCR01MZSJ	0	ROHM	Not Used
R647					0.06W MCR01MZSJ	0	ROHM	Not Used
R648					0.06W MCR01MZSJ	0	ROHM	Not Used
R649					0.06W MCR01MZSJ	0	ROHM	Not Used
R650	RR 7410	RESISTOR	METAL CHIP	10k OHM	0.06W MCR01MZSJ103	1	ROHM	
R652	RR 7410	RESISTOR	METAL CHIP	10k OHM	0.06W MCR01MZSJ103	1	ROHM	
R654					0.06W MCR01MZSJ	0	ROHM	Not Used
R655					0.06W MCR01MZSJ	0	ROHM	Not Used
R656					0.06W MCR01MZSJ	0	ROHM	Not Used
R657					0.06W MCR01MZSJ	0	ROHM	Not Used
R658	RR 7550	RESISTOR	METAL CHIP	220k OHM	0.06W MCR01MZSJ224	1	ROHM	
R659	RR 7520	RESISTOR	METAL CHIP	100k OHM	0.06W MCR01MZSJ104	1	ROHM	
R660	RR 7110	RESISTOR	METAL CHIP	0 OHM	0.06W MCR01MZSJ000	1	ROHM	
R661	RR 7110	RESISTOR	METAL CHIP	0 OHM	0.06W MCR01MZSJ000	1	ROHM	
R662	RR 7110	RESISTOR	METAL CHIP	0 OHM	0.06W MCR01MZSJ000	1	ROHM	
R663	RR 7110	RESISTOR	METAL CHIP	0 OHM	0.06W MCR01MZSJ000	1	ROHM	
R664	RR 7110	RESISTOR	METAL CHIP	0 OHM	0.06W MCR01MZSJ000	1	ROHM	
R665	RR 7110	RESISTOR	METAL CHIP	0 OHM	0.06W MCR01MZSJ000	1	ROHM	
R666	RR 7110	RESISTOR	METAL CHIP	0 OHM	0.06W MCR01MZSJ000	1	ROHM	
R667	RR 7110	RESISTOR	METAL CHIP	0 OHM	0.06W MCR01MZSJ000	1	ROHM	
R668	RR 7110	RESISTOR	METAL CHIP	0 OHM	0.06W MCR01MZSJ000	1	ROHM	
R669	RR 7110	RESISTOR	METAL CHIP	0 OHM	0.06W MCR01MZSJ000	1	ROHM	
R670	RR 7110	RESISTOR	METAL CHIP	0 OHM	0.06W MCR01MZSJ000	1	ROHM	
R671	RR 7110	RESISTOR	METAL CHIP	0 OHM	0.06W MCR01MZSJ000	1	ROHM	
R672	RR 7110	RESISTOR	METAL CHIP	0 OHM	0.06W MCR01MZSJ000	1	ROHM	
R673	RR 7110	RESISTOR	METAL CHIP	0 OHM	0.06W MCR01MZSJ000	1	ROHM	
R674	RR 7110	RESISTOR	METAL CHIP	0 OHM	0.06W MCR01MZSJ000	1	ROHM	
R675	RR 7110	RESISTOR	METAL CHIP	0 OHM	0.06W MCR01MZSJ000	1	ROHM	
R676	RR 7110	RESISTOR	METAL CHIP	0 OHM	0.06W MCR01MZSJ000	1	ROHM	
R677	RR 7110	RESISTOR	METAL CHIP	0 OHM	0.06W MCR01MZSJ000	1	ROHM	
R678	RR 7110	RESISTOR	METAL CHIP	0 OHM	0.06W MCR01MZSJ000	1	ROHM	
R679	RR 7110	RESISTOR	METAL CHIP	0 OHM	0.06W MCR01MZSJ000	1	ROHM	
R680	RR 7110	RESISTOR	METAL CHIP	0 OHM	0.06W MCR01MZSJ000	1	ROHM	
R681	RR 7110	RESISTOR	METAL CHIP	0 OHM	0.06W MCR01MZSJ000	1	ROHM	
R682	RR 7110	RESISTOR	METAL CHIP	0 OHM	0.06W MCR01MZSJ000	1	ROHM	
R683	RR 7110	RESISTOR	METAL CHIP	0 OHM	0.06W MCR01MZSJ000	1	ROHM	
R684	RR 7110	RESISTOR	METAL CHIP	0 OHM	0.06W MCR01MZSJ000	1	ROHM	
R685	RR 7110	RESISTOR	METAL CHIP	0 OHM	0.06W MCR01MZSJ000	1	ROHM	
R686	RR 7110	RESISTOR	METAL CHIP	0 OHM	0.06W MCR01MZSJ000	1	ROHM	
R687	RR 7110	RESISTOR	METAL CHIP	0 OHM	0.06W MCR01MZSJ000	1	ROHM	
R688	RR 7110	RESISTOR	METAL CHIP	0 OHM	0.06W MCR01MZSJ000	1	ROHM	
R689	RR 7110	RESISTOR	METAL CHIP	0 OHM	0.06W MCR01MZSJ000	1	ROHM	
R690	RR 7110	RESISTOR	METAL CHIP	0 OHM	0.06W MCR01MZSJ000	1	ROHM	
R691	RR 7110	RESISTOR	METAL CHIP	0 OHM	0.06W MCR01MZSJ000	1	ROHM	
R692	RR 7110	RESISTOR	METAL CHIP	0 OHM	0.06W MCR01MZSJ000	1	ROHM	
R693	RR 7110	RESISTOR	METAL CHIP	0 OHM	0.06W MCR01MZSJ000	1	ROHM	
R694					0.06W MCR01	0	ROHM	Not Used
R695	RR 7110	RESISTOR	METAL CHIP	0 OHM	0.06W MCR01MZSJ000	1	ROHM	
R696	RR 7110	RESISTOR	METAL CHIP	0 OHM	0.06W MCR01MZSJ000	1	ROHM	
R697	RR 7110	RESISTOR	METAL CHIP	0 OHM	0.06W MCR01MZSJ000	1	ROHM	
R698					0.06W MCR01	0	ROHM	Not Used
R700	RJ 1480	RESISTOR ARRAY	METAL CHIP	560 OHM	0.03W MNR04MOABJ561	1	ROHM	
R701	RJ 1480	RESISTOR ARRAY	METAL CHIP	560 OHM	0.03W MNR04MOABJ561	1	ROHM	
R702	RJ 1480	RESISTOR ARRAY	METAL CHIP	560 OHM	0.03W MNR04MOABJ561	1	ROHM	
R703	RJ 1480	RESISTOR ARRAY	METAL CHIP	560 OHM	0.03W MNR04MOABJ561	1	ROHM	
R704	RJ 1480	RESISTOR ARRAY	METAL CHIP	560 OHM	0.03W MNR04MOABJ561	1	ROHM	
R705	RJ 1480	RESISTOR ARRAY	METAL CHIP	560 OHM	0.03W MNR04MOABJ561	1	ROHM	
R706	RJ 1480	RESISTOR ARRAY	METAL CHIP	560 OHM	0.03W MNR04MOABJ561	1	ROHM	
R707	RR 7370	RESISTOR	METAL CHIP	4.7k OHM	0.06W MCR01MZSJ472	1	ROHM	

**PARTS LIST : J725P/Pi VHF MAIN BOARD**

SYMBOL	KDE PARTS No.	PARTS NAME	PARTS DESCRIPTION	FUNCTION DESIGNATION	VENDOR ITEM_NBR	Q'ty	VENDOR_NAME	REMARKS
R708	RR 7520	RESISTOR	METAL CHIP	100k OHM	0.06W MCR01MZSJ104	1	ROHM	
R713	RR 7440	RESISTOR	METAL CHIP	22k OHM	0.06W MCR01MZSJ223	1	ROHM	
R714	RR 7440	RESISTOR	METAL CHIP	22k OHM	0.06W MCR01MZSJ223	1	ROHM	
R715	RR 6840	RESISTOR	METAL CHIP	560 OHM	0.06W MCR01MZSJ561	1	ROHM	
R716	RR 6840	RESISTOR	METAL CHIP	560 OHM	0.06W MCR01MZSJ561	1	ROHM	
R717	RR 7340	RESISTOR	METAL CHIP	2.2k OHM	0.06W MCR01MZSJ222	1	ROHM	
R719	RR 7210	RESISTOR	METAL CHIP	100 OHM	0.06W MCR01MZSJ101	1	ROHM	
R720	RR 7410	RESISTOR	METAL CHIP	10k OHM	0.06W MCR01MZSJ103	1	ROHM	
R721	RR 7710	RESISTOR	METAL CHIP	4.7 OHM	0.06W MCR01MZSJ4R7	1	ROHM	
R722	RR 7710	RESISTOR	METAL CHIP	4.7 OHM	0.06W MCR01MZSJ4R7	1	ROHM	
R723	RR 7480	RESISTOR	METAL CHIP	47k OHM	0.06W MCR01MZSJ473	1	ROHM	
R724	RR 7480	RESISTOR	METAL CHIP	47k OHM	0.06W MCR01MZSJ473	1	ROHM	
R725	RJ 1480	RESISTOR ARRAY	METAL CHIP	560 OHM	0.03W MNR04MOABJ561	1	ROHM	
R726	RJ 1480	RESISTOR ARRAY	METAL CHIP	560 OHM	0.03W MNR04MOABJ561	1	ROHM	
R727	RR 6840	RESISTOR	METAL CHIP	560 OHM	0.06W MCR01MZSJ561	1	ROHM	
R728	RR 6840	RESISTOR	METAL CHIP	560 OHM	0.06W MCR01MZSJ561	1	ROHM	
R729	RR 7370	RESISTOR	METAL CHIP	4.7k OHM	0.06W MCR01MZSJ472	1	ROHM	
R730	RR 7370	RESISTOR	METAL CHIP	4.7k OHM	0.06W MCR01MZSJ472	1	ROHM	
R731	RR 7410	RESISTOR	METAL CHIP	10k OHM	0.06W MCR01MZSJ103	1	ROHM	
R732	RR 7360	RESISTOR	METAL CHIP	3.9k OHM	0.06W MCR01MZSJ392	1	ROHM	
R733	RR 7740	RESISTOR	METAL CHIP	5.6k OHM	0.06W MCR01MZSJ562	1	ROHM	
R734	RR 0410	RESISTOR	METAL CHIP	200k OHM	0.06W MCR01MZSJ204	1	ROHM	
R735	RR 7570	RESISTOR	METAL CHIP	330k OHM	0.06W MCR01MZSJ334	1	ROHM	
R736	RR 0440	RESISTOR	METAL CHIP	51k OHM	0.06W MCR01MZSJ513	1	ROHM	
R737	RR 7520	RESISTOR	METAL CHIP	100k OHM	0.06W MCR01MZSJ104	1	ROHM	
R738	RR 7570	RESISTOR	METAL CHIP	330k OHM	0.06W MCR01MZSJ334	1	ROHM	
R739	RR 7340	RESISTOR	METAL CHIP	2.2k OHM	0.06W MCR01MZSJ222	1	ROHM	
R740	RR 7210	RESISTOR	METAL CHIP	100 OHM	0.06W MCR01MZSJ101	1	ROHM	
R741	RR 6840	RESISTOR	METAL CHIP	560 OHM	0.06W MCR01MZSJ561	1	ROHM	
R742	RR 7370	RESISTOR	METAL CHIP	4.7k OHM	0.06W MCR01MZSJ472	1	ROHM	
R743	RR 7480	RESISTOR	METAL CHIP	47k OHM	0.06W MCR01MZSJ473	1	ROHM	
R744	RR 7480	RESISTOR	METAL CHIP	47k OHM	0.06W MCR01MZSJ473	1	ROHM	
R745	RJ 1470	RESISTOR ARRAY	METAL CHIP	47k OHM	0.03W MNR04MOABJ473	1	ROHM	
R746	RR 7710	RESISTOR	METAL CHIP	4.7 OHM	0.06W MCR01MZSJ4R7	1	ROHM	
R747	RR 7370	RESISTOR	METAL CHIP	4.7k OHM	0.06W MCR01MZSJ472	1	ROHM	
R748	RR 7520	RESISTOR	METAL CHIP	100k OHM	0.06W MCR01MZSJ104	1	ROHM	
R749	RR 7220	RESISTOR	METAL CHIP	150 OHM	0.06W MCR01MZSJ151	1	ROHM	
R750	RT 0220	RESISTOR	METAL CHIP	2.2 OHM	0.1W RK73H2ATD 2.2OHM F	1	KOA	
R751	RR 7340	RESISTOR	METAL CHIP	2.2k OHM	0.06W MCR01MZSJ222	1	ROHM	
R752	RR 6840	RESISTOR	METAL CHIP	560 OHM	0.06W MCR01MZSJ561	1	ROHM	
R753	RR 6840	RESISTOR	METAL CHIP	560 OHM	0.06W MCR01MZSJ561	1	ROHM	
R754	RR 7210	RESISTOR	METAL CHIP	100 OHM	0.06W MCR01MZSJ101	1	ROHM	
R755	RR 6840	RESISTOR	METAL CHIP	560 OHM	0.06W MCR01MZSJ561	1	ROHM	
R756	RR 7410	RESISTOR	METAL CHIP	10k OHM	0.06W MCR01MZSJ103	1	ROHM	
R757	RR 7410	RESISTOR	METAL CHIP	10k OHM	0.06W MCR01MZSJ103	1	ROHM	
R758	RR 7410	RESISTOR	METAL CHIP	10k OHM	0.06W MCR01MZSJ103	1	ROHM	
R759	RR 7410	RESISTOR	METAL CHIP	10k OHM	0.06W MCR01MZSJ103	1	ROHM	
R760	RR 6840	RESISTOR	METAL CHIP	560 OHM	0.06W MCR01MZSJ561	1	ROHM	
R761	RR 6840	RESISTOR	METAL CHIP	560 OHM	0.06W MCR01MZSJ561	1	ROHM	
R762	RR 6840	RESISTOR	METAL CHIP	560 OHM	0.06W MCR01MZSJ561	1	ROHM	
R763	RR 6840	RESISTOR	METAL CHIP	560 OHM	0.06W MCR01MZSJ561	1	ROHM	
R764	RR 6840	RESISTOR	METAL CHIP	560 OHM	0.06W MCR01MZSJ561	1	ROHM	
R765	RR 6840	RESISTOR	METAL CHIP	560 OHM	0.06W MCR01MZSJ561	1	ROHM	
R766	RR 7110	RESISTOR	METAL CHIP	0 OHM	0.06W MCR01MZSJ000	1	ROHM	
R768	RR 7480	RESISTOR	METAL CHIP	47k OHM	0.06W MCR01MZSJ473	1	ROHM	
R769	RJ 1200	RESISTOR ARRAY	METAL CHIP	100 OHM	0.03W MNR04MOABJ101	1	ROHM	
R770	RJ 1200	RESISTOR ARRAY	METAL CHIP	100 OHM	0.03W MNR04MOABJ101	1	ROHM	
R771	RR 7210	RESISTOR	METAL CHIP	100 OHM	0.06W MCR01MZSJ101	1	ROHM	
R772	RJ 1200	RESISTOR ARRAY	METAL CHIP	100 OHM	0.03W MNR04MOABJ101	1	ROHM	
R773	RJ 1200	RESISTOR ARRAY	METAL CHIP	100 OHM	0.03W MNR04MOABJ101	1	ROHM	
R774	RR 7210	RESISTOR	METAL CHIP	100 OHM	0.06W MCR01MZSJ101	1	ROHM	
R775	RJ 1200	RESISTOR ARRAY	METAL CHIP	100 OHM	0.03W MNR04MOABJ101	1	ROHM	
R776	RJ 1200	RESISTOR ARRAY	METAL CHIP	100 OHM	0.03W MNR04MOABJ101	1	ROHM	
R777	RJ 1200	RESISTOR ARRAY	METAL CHIP	100 OHM	0.03W MNR04MOABJ101	1	ROHM	
R778	RR 7210	RESISTOR	METAL CHIP	100 OHM	0.06W MCR01MZSJ101	1	ROHM	
R779	RR 7210	RESISTOR	METAL CHIP	100 OHM	0.06W MCR01MZSJ101	1	ROHM	
R780	RR 7210	RESISTOR	METAL CHIP	100 OHM	0.06W MCR01MZSJ101	1	ROHM	
R781	RR 7210	RESISTOR	METAL CHIP	100 OHM	0.06W MCR01MZSJ101	1	ROHM	
R782	RR 7210	RESISTOR	METAL CHIP	100 OHM	0.06W MCR01MZSJ101	1	ROHM	
R783	RR 7210	RESISTOR	METAL CHIP	100 OHM	0.06W MCR01MZSJ101	1	ROHM	
R784	RR 7340	RESISTOR	METAL CHIP	2.2k OHM	0.06W MCR01MZSJ222	1	ROHM	
R785	RR 7710	RESISTOR	METAL CHIP	4.7 OHM	0.06W MCR01MZSJ4R7	1	ROHM	
R786	RR 7340	RESISTOR	METAL CHIP	2.2k OHM	0.06W MCR01MZSJ222	1	ROHM	
R787	RR 7710	RESISTOR	METAL CHIP	4.7 OHM	0.06W MCR01MZSJ4R7	1	ROHM	
R800					0.06W MCR01MZSJ	0	ROHM	Not Used
R801	RR 7110	RESISTOR	METAL CHIP	0 OHM	0.06W MCR01MZSJ000	1	ROHM	
R802					0.06W MCR01MZSJ	0	ROHM	Not Used
R803	RR 7110	RESISTOR	METAL CHIP	0 OHM	0.06W MCR01MZSJ000	1	ROHM	
R810	QV 9610	VARISTOR	METAL CHIP		VCM11R180A300PT	1	MURATA	
R811	QV 9610	VARISTOR	METAL CHIP		VCM11R180A300PT	1	MURATA	
R901	RR 7520	RESISTOR	METAL CHIP	100k OHM	0.06W MCR01MZSJ104	1	ROHM	
R902	RR 7480	RESISTOR	METAL CHIP	47k OHM	0.06W MCR01MZSJ473	1	ROHM	
R903	RT 0200	RESISTOR	METAL CHIP	1.0 OHM	0.06W MCR03EZHJ1R0	1	ROHM	
R905	RR 7520	RESISTOR	METAL CHIP	100k OHM	0.06W MCR01MZSJ104	1	ROHM	
R906	RR 7570	RESISTOR	METAL CHIP	330k OHM	0.06W MCR01MZSJ334	1	ROHM	
R907	RR 7440	RESISTOR	METAL CHIP	22k OHM	0.06W MCR01MZSJ223	1	ROHM	
R908	RR 7580	RESISTOR	METAL CHIP	470k OHM	0.06W MCR01MZSJ474	1	ROHM	
R909	RR 7370	RESISTOR	METAL CHIP	4.7k OHM	0.06W MCR01MZSJ472	1	ROHM	
R910	RR 7370	RESISTOR	METAL CHIP	4.7k OHM	0.06W MCR01MZSJ472	1	ROHM	
R911	RR 7370	RESISTOR	METAL CHIP	4.7k OHM	0.06W MCR01MZSJ472	1	ROHM	
R912	RR 7550	RESISTOR	METAL CHIP	220k OHM	0.06W MCR01MZSJ224	1	ROHM	
R913	RR 7410	RESISTOR	METAL CHIP	10k OHM	0.06W MCR01MZSJ103	1	ROHM	
R914	RR 7370	RESISTOR	METAL CHIP	4.7k OHM	0.06W MCR01MZSJ472	1	ROHM	
R915	RR 7210	RESISTOR	METAL CHIP	100 OHM	0.06W MCR01MZSJ101	1	ROHM	
R916	RR 7480	RESISTOR	METAL CHIP	47k OHM	0.06W MCR01MZSJ473	1	ROHM	
R917	RR 7410	RESISTOR	METAL CHIP	10k OHM	0.06W MCR01MZSJ103	1	ROHM	
R918	RR 7370	RESISTOR	METAL CHIP	4.7k OHM	0.06W MCR01MZSJ472	1	ROHM	
R919	RR 0430	RESISTOR	METAL CHIP	2.2 OHM	0.06W MCR01MZSJ2R2	1	ROHM	

## PARTS LIST : J725P/Pi VHF MAIN BOARD

SYMBOL	KDE_PARTS_No.	PARTS_NAME	PARTS_DESCRIPTION	FUNCTION DESIGNATION	VENDOR_ITEM_NBR	Q'ty	VENDOR_NAME	REMARKS
R920	RR 1510	RESISTOR	METAL CHIP	300k OHM	0.06W	1	MCR01MZSF3003	ROHM
R921	RR 0080	RESISTOR	METAL CHIP	100k OHM	0.06W	1	MCR01MZSF1003	ROHM
U101	UR 8520	INTEGRATED CIRCUIT	MIXER FM IF SYSTEM			1	SA647DH,118	PHILIPS
U102	UT 9020	MICRO CIRCUIT	ANALOG SW			1	HD74HC4066TELL	HITACHI
U103	UT 9020	MICRO CIRCUIT	ANALOG SW			1	HD74HC4066TELL	HITACHI
U201	UG 12230	P.A.				1	MHW2627-1	MOTOROLA
U202	UR 3140	MICRO CIRCUIT	AMP			1	uPC2710T-E3	NEC
U205	UR 4580	MICRO CIRCUIT	OPAMP			1	NJM13404R-TE1	JRC
U302	UR 4580	MICRO CIRCUIT	OPAMP			1	NJM13404R-TE1	JRC
U303	UT 7960	MICRO CIRCUIT				1	TC7S04FU-TE85L	TOSHIBA
U304	UT 9020	MICRO CIRCUIT	ANALOG SW			1	HD74HC4066TELL	HITACHI
U305	UG11580	MICRO CIRCUIT	FREQ.SYNTH.			1	CX72301-11	CONEXANT
U306	UT 9030	MICRO CIRCUIT				1	TC7W53FU-TE12L	TOSHIBA
U307	UT 7740	MICRO CIRCUIT				1	TC7W04FU-TE12L	TOSHIBA
U308	UT 7550	MICRO CIRCUIT				1	TC7W74FU-TE12L	TOSHIBA
U309	UT10100	MICRO CIRCUIT				1	TC7WB66FK	TOSHIBA
U310	UR 4580	MICRO CIRCUIT				1	NJM13404R-TE1	JRC
U402	UR 8480	MICRO CIRCUIT	REGULATOR IC			1	TK11355BMCL	TOKO
U403	UR 8480	MICRO CIRCUIT	REGULATOR IC			1	TK11355BMCL	TOKO
U404	UR 8510	OP-AMP				1	NJM2904V-TE1	JRC
U405	UR 1630	MICRO CIRCUIT	REGULATOR IC			1	TK11230BMCL	TOKO
U500	UG 9640	MICRO CIRCUIT				1	TCM9108APTAR(G4UD04838)	T.I.
U501	UR 4400	OP-AMP				1	TC75S51F-TE85L	TOSHIBA
U502	UL 0550	AUDIO AMP				1	NJM2073M-T	JRC
U503	UR 4400	OP-AMP				1	TC75S51F-TE85L	TOSHIBA
U504	UR 4400	OP-AMP				1	TC75S51F-TE85L	TOSHIBA
U505	UT 8350	MICRO CIRCUIT				1	TC7S66FU-TE85R	TOSHIBA
U506	UT 8350	MICRO CIRCUIT				1	TC7S66FU-TE85R	TOSHIBA
U600	UG11590	MICRO CIRCUIT	DSP			1	TMS320VC5416PGE-120	T.I.
U601	UG 12240	MICRO CIRCUIT				1	TLV5618AIDR	T.I.
U602	UT 9030	MICRO CIRCUIT				1	TC7W53FU-TE12L	TOSHIBA
U603	UG11710	MICRO CIRCUIT				1	AT25320N-10SI-2.7	ATMEL
U605		MICRO CIRCUIT				1	AT27BV1024-90VI	ATMEL
U700	UG 9630					1	HG71CA1801AFE(G4UD04837)	HITACHI
U701	UG11610	MICRO CIRCUIT	EEPROM			1	MBM29F016A-90PFTN	FUJITSU
U702	UG11630	MICRO CIRCUIT	SRAM			1	HM628512CLTTI-7	HITACHI
U703	UR 3900	MICRO CIRCUIT	EEPROM			1	24LC16BT-I/SN	Micro chip
U704	UG 9620	SERIAL No. ROM				1	DS2401Z-TR	DALLAS
U705	UT 7510	MICRO CIRCUIT				1	TC7S08FU-TE85R	TOSHIBA
U706	UR 4400	MICRO CIRCUIT				1	TC75S51F-TE85L	TOSHIBA
U900	UG 9670	MICRO CIRCUIT	REGULATOR IC			1	LP2951CMX-66	N.S.
U902	UR 8540	MICRO CIRCUIT	REGULATOR IC			1	TPS7133QDR	T.I.
U903	UG11640	MICRO CIRCUIT	REGULATOR IC			1	TPS76915DBVR	T.I.
U904	UG11650	MICRO CIRCUIT	SWITCHING REG.			1	MAX887HESA-TG075	MAXIM
Z101	FG 0970	MIXER				1	KKT-2L-TR	MKT TAISEI
Z302	SA 1100	ANT-SW				1	HC-35(VHF)	KDE
Z303	FG 0990	OSCILLATOR	RX VCO			1	VCO25322-0270A-TR	MKT TAISEI
Z304	FG 1000	OSCILLATOR	TX VCO			1	VCO25513-0155B-TR	MKT TAISEI
Z305	FG 0441	VC-TCXO		19.2MHz		1	GVA3004A	NDK

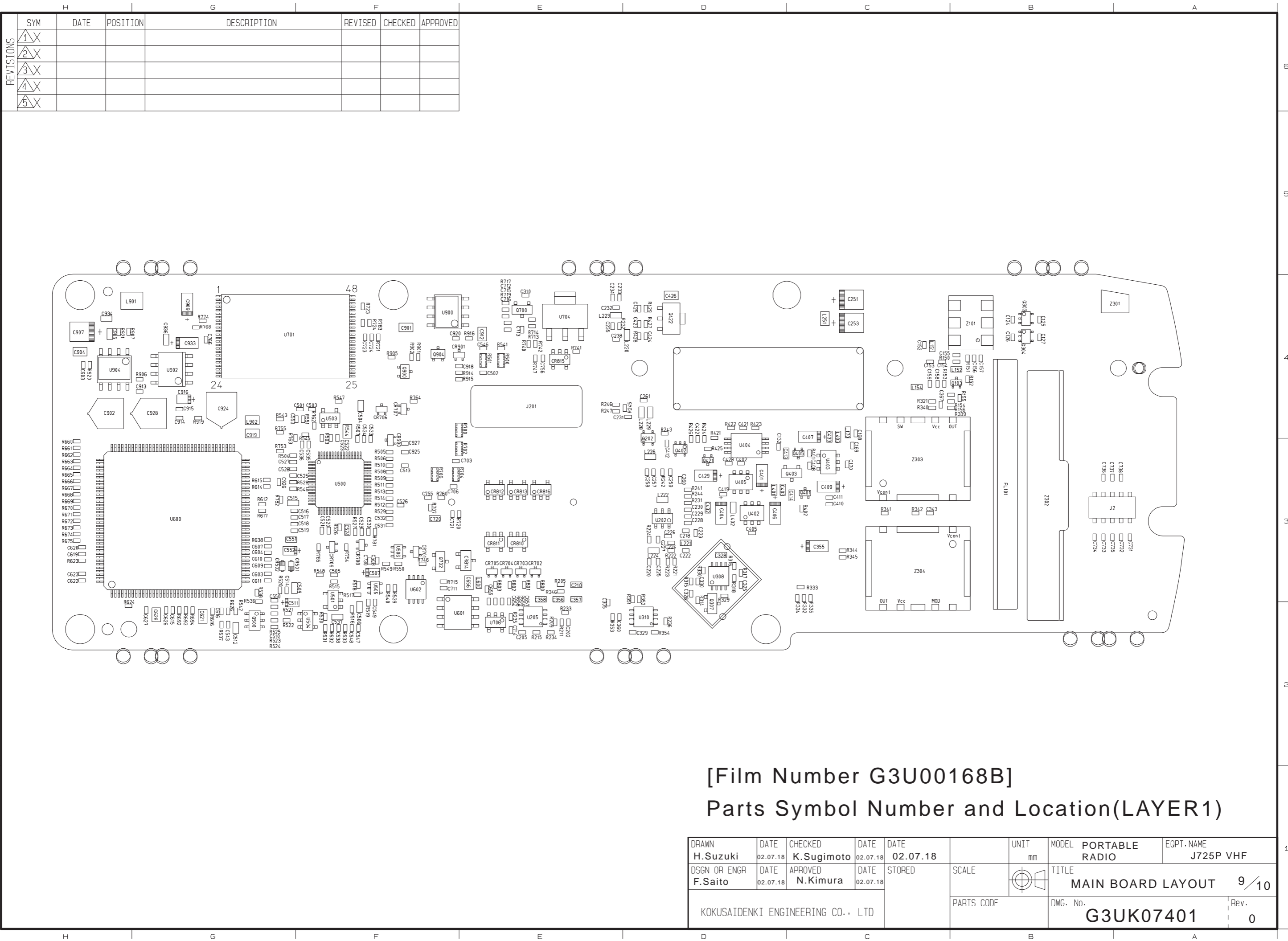
**PARTS LIST : J725P/Pi I/F BOARD**

SYMBOL	GOYO_PARTS_No.	PARTS_NAME	PARTS_DESCRIPTION	FUNCTION DESIGNATION		VENDOR_ITEM_NBR	Q'ty
C1	CN 8200	CAPACITOR	CERAMIC CHIP	100pF	50V	GRM36CH101J50PT	1
C2	CN 8200	CAPACITOR	CERAMIC CHIP	100pF	50V	GRM36CH101J50PT	1
C3	CN 8200	CAPACITOR	CERAMIC CHIP	100pF	50V	GRM36CH101J50PT	1
C4	CN 8200	CAPACITOR	CERAMIC CHIP	100pF	50V	GRM36CH101J50PT	1
C5	CN 8200	CAPACITOR	CERAMIC CHIP	100pF	50V	GRM36CH101J50PT	1
C6	CN 8200	CAPACITOR	CERAMIC CHIP	100pF	50V	GRM36CH101J50PT	1
C7	CN 8200	CAPACITOR	CERAMIC CHIP	100pF	50V	GRM36CH101J50PT	1
C8	CN 8200	CAPACITOR	CERAMIC CHIP	100pF	50V	GRM36CH101J50PT	1
C9	CN 8200	CAPACITOR	CERAMIC CHIP	100pF	50V	GRM36CH101J50PT	1
C10	CN 8200	CAPACITOR	CERAMIC CHIP	100pF	50V	GRM36CH101J50PT	1
C11	CN 8200	CAPACITOR	CERAMIC CHIP	100pF	50V	GRM36CH101J50PT	1
C12	CN 8200	CAPACITOR	CERAMIC CHIP	100pF	50V	GRM36CH101J50PT	1
C13	CN 8200	CAPACITOR	CERAMIC CHIP	100pF	50V	GRM36CH101J50PT	1
C14	CN 8200	CAPACITOR	CERAMIC CHIP	100pF	50V	GRM36CH101J50PT	1
C15	CN 8200	CAPACITOR	CERAMIC CHIP	100pF	50V	GRM36CH101J50PT	1
C16	CN 8200	CAPACITOR	CERAMIC CHIP	100pF	50V	GRM36CH101J50PT	1
C18						GRM39	0
C19	CN 7730	CAPACITOR	CERAMIC CHIP	0.1 uF	16V	GRM39B104K16-PT	1
C20	CN 7710	CAPACITOR	CERAMIC CHIP	0.01 uF	16V	GRM39B103K16-PT	1
C21						TESVSP1	0
C22						TESVSP1	0
C23	CN 7710	CAPACITOR	CERAMIC CHIP	0.01 uF	16V	GRM39B103K16-PT	1
C24	CN 8200	CAPACITOR	CERAMIC CHIP	100pF	50V	GRM36CH101J50PT	1
C25	CN 7710	CAPACITOR	CERAMIC CHIP	0.01 uF	16V	GRM39B103K16-PT	1
C26						TESVSP1	0
C27	CN 8200	CAPACITOR	CERAMIC CHIP	100pF	50V	GRM36CH101J50PT	1
C28	CN 8200	CAPACITOR	CERAMIC CHIP	100pF	50V	GRM36CH101J50PT	1
C29						GRM36	0
C30						C2012	0
CR1	QG0440	LED				CL-170YG-CD-T	1
CR2	QG0440	LED				CL-170YG-CD-T	1
CR3	QG0440	LED				CL-170YG-CD-T	1
CR4	QG0440	LED				CL-170YG-CD-T	1
CR5	QG0440	LED				CL-170YG-CD-T	1
CR6	QG0440	LED				CL-170YG-CD-T	1
CR7	QG0440	LED				CL-170YG-CD-T	1
CR8	QG0440	LED				CL-170YG-CD-T	1
CR9	QG 1770	LED				CL-221YG-C-TS	1
CR10	QG 1770	LED				CL-221YG-C-TS	1
CR11	QG 1770	LED				CL-221YG-C-TS	1
CR12	QG 1770	LED				CL-221YG-C-TS	1
CR13	QG5640	LED				LT1ED67A	1
CR18	QV 9630	DIODE ARRAY				NNCD7.5G-T1B	1
J12	JD 9290	CONNECTOR				CFP4508-0101	1
J13	JD 15940	CONNECTOR				CK-2809-1991H	1
P1	JD 9270	CONNECTOR				AXN440530	1
R1	RR 7230	RESISTOR	METAL CHIP	180 OHM	0.06W	MCR01MZSJ181	1
R2	RR 7230	RESISTOR	METAL CHIP	180 OHM	0.06W	MCR01MZSJ181	1
R3	RR 7230	RESISTOR	METAL CHIP	180 OHM	0.06W	MCR01MZSJ181	1
R4	RR 7230	RESISTOR	METAL CHIP	180 OHM	0.06W	MCR01MZSJ181	1
R5	RR 7230	RESISTOR	METAL CHIP	180 OHM	0.06W	MCR01MZSJ181	1
R6	RR 7230	RESISTOR	METAL CHIP	180 OHM	0.06W	MCR01MZSJ181	1
R7	RR 7230	RESISTOR	METAL CHIP	330 OHM	0.06W	MCR01MZSJ331	1
R8	RR 7230	RESISTOR	METAL CHIP	330 OHM	0.06W	MCR01MZSJ331	1
R9	RR 7230	RESISTOR	METAL CHIP	180 OHM	0.06W	MCR01MZSJ181	1
R10	RR 7230	RESISTOR	METAL CHIP	180 OHM	0.06W	MCR01MZSJ181	1
R11	RR 1770	RESISTOR	METAL CHIP	68k OHM	0.06W	MCR01MZSF6802	1
R12	RR 1690	RESISTOR	METAL CHIP	150k OHM	0.06W	MCR01MZSF1503	1
R13	RR 7520	RESISTOR	METAL CHIP	100k OHM	0.06W	MCR01MZSJ104	1
R14	RR 7520	RESISTOR	METAL CHIP	100k OHM	0.06W	MCR01MZSJ104	1
R15	RR 7210	RESISTOR	METAL CHIP	100 OHM	0.06W	MCR01MZSJ101	1
R16	RR 7320	RESISTOR	METAL CHIP	1.5k OHM	0.06W	MCR01MZSJ152	1
R17						MCR01	0
R18	RR 6880	RESISTOR	METAL CHIP	820 OHM	0.06W	MCR01MZSJ821	1
R19	RR 7110	RESISTOR	METAL CHIP	0 OHM	0.06W	MCR01MZSJ000	1
R20	RT 8310	RESISTOR	METAL CHIP	0 OHM	0.06W	MCR03EZHJ000	1
S16	SG 0180	SW				SKQTLAE010	
U1	UR 4400	OPAMP				TC75S51F-TE85L	1
Z1	KG 5020	LCD				SXK 107 3885/1	1
Z2	ZG 0750	Microphone				KUF3123-019090	1



**PARTS LIST : J725P/Pi UDC BOARD**

SYMBOL	GOYO_PARTS_No.	PARTS_NAME	PARTS_DESCRIPTION	FUNCTION DESIGNATION	VENDOR_ITEM_NBR	Q'ty	VENDOR_NAME	REMARKS
P20	JD 15890	CONNECTOR			IL-312-A20P-VF-A1-E350	1	JAE	



REVISIONS	SYM	DATE	POSITION	DESCRIPTION	REVISED	CHECKED	APPROVED
1	X						
2	X						
3	X						
4	X						
5	X						

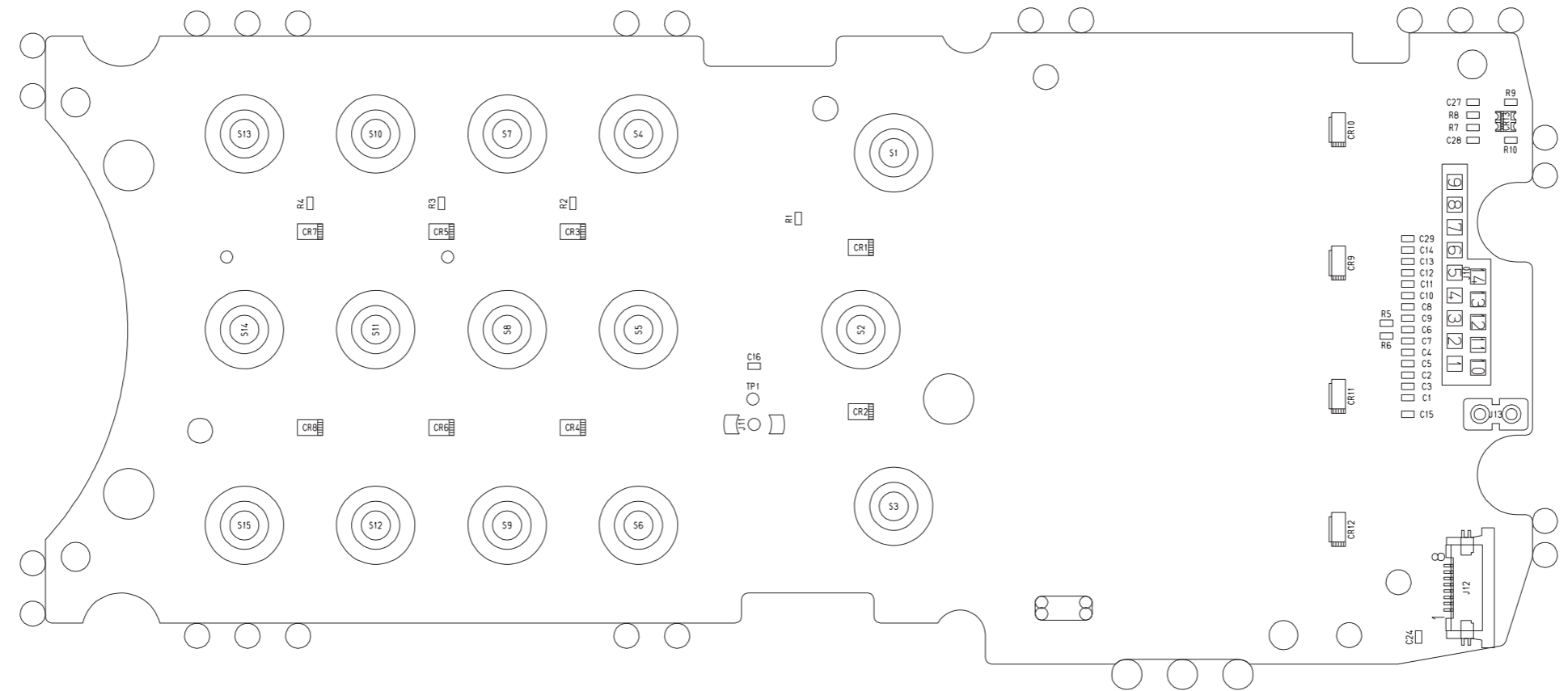
[Film Number G3U00168B]  
 Parts Symbol Number and Location(LAYER1)

DRAWN H.Suzuki	DATE 02.07.18	CHECKED K.Sugimoto	DATE 02.07.18	DATE 02.07.18	UNIT mm	MODEL PORTABLE RADIO	EQPT. NAME J725P VHF
DSGN OR ENGR F.Saito	DATE 02.07.18	APPROVED N.Kimura	DATE 02.07.18	DATE STORED	SCALE	TITLE MAIN BOARD LAYOUT	9/10
KOKUSAIDENKI ENGINEERING CO., LTD					PARTS CODE	DWG. No. G3UK07401	Rev. 0





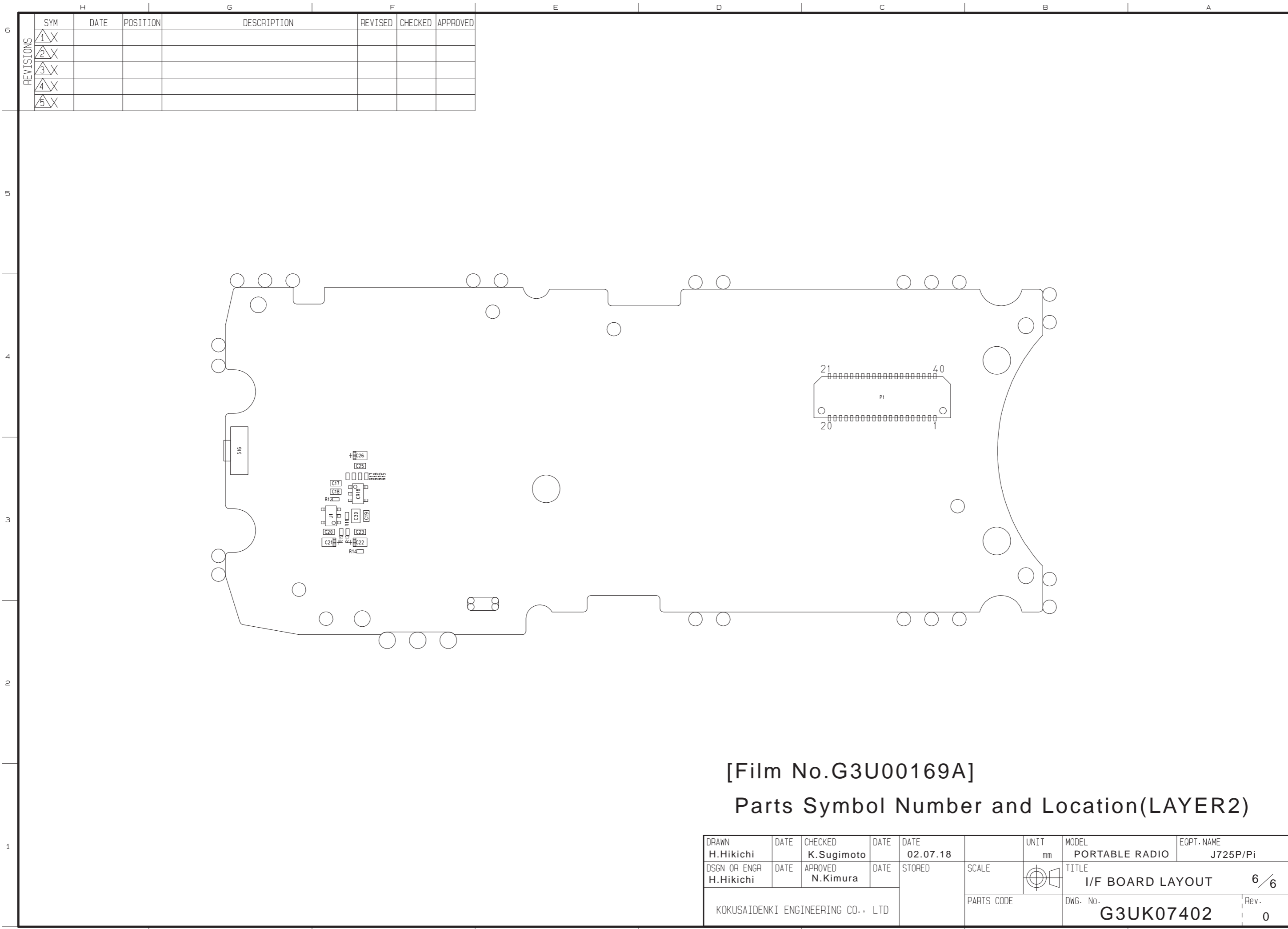
REVISIONS	SYM	DATE	POSITION	DESCRIPTION	REVISED	CHECKED	APPROVED
	1						
	2						
	3						
	4						
	5						



[Film No.G3U00169A]

Parts Symbol Number and Location(LAYER1)

DRAWN H.Hikichi	DATE	CHECKED K.Sugimoto	DATE	DATE 02.07.18	UNIT mm	MODEL PORTABLE RADIO	EQPT. NAME J725P/Pi
DSGN OR ENGR H.Hikichi	DATE	APPROVED N.Kimura	DATE	STORED	SCALE	TITLE I/F BOARD LAYOUT	5/6
KOKUSAIDENKI ENGINEERING CO., LTD					PARTS CODE	DWG. No. G3UK07402	Rev. 0

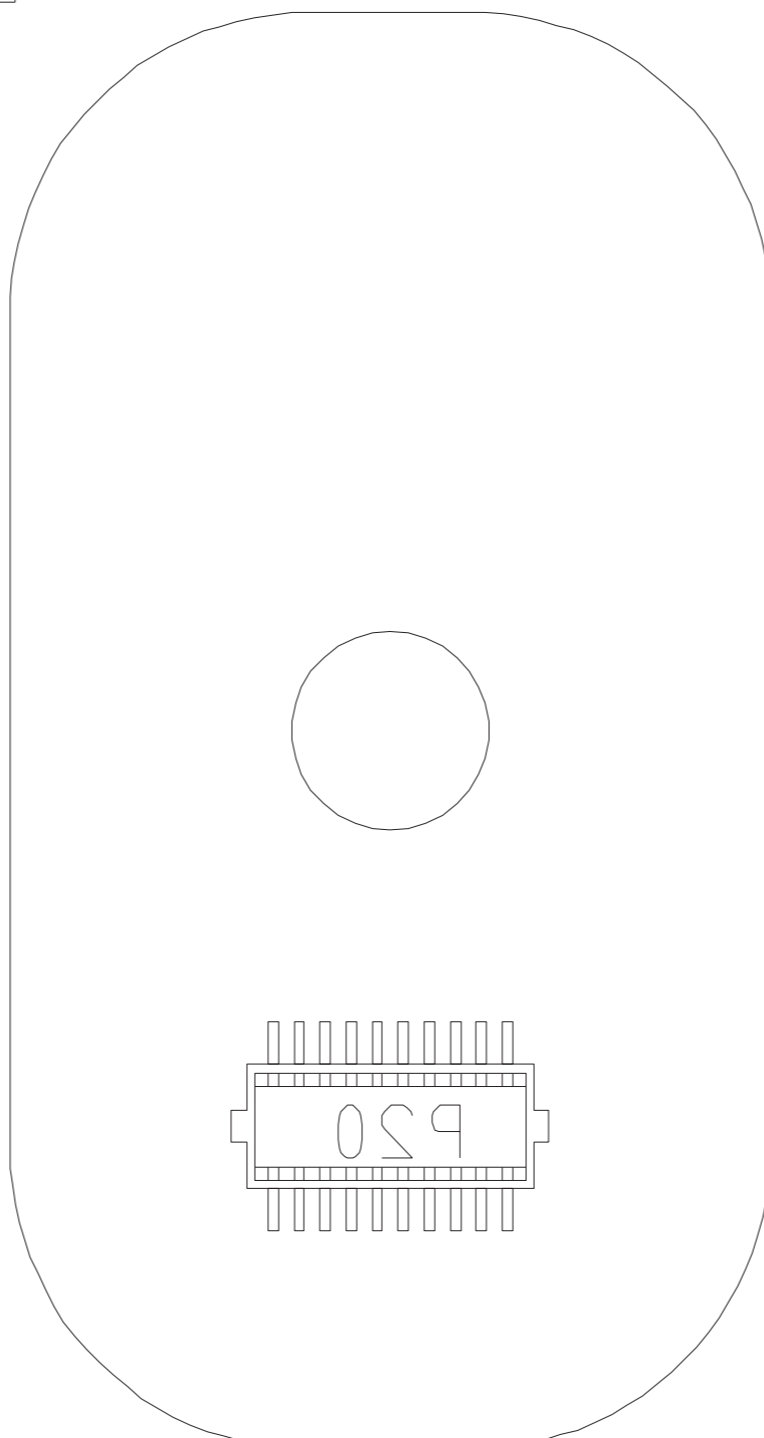


REVISIONS	SYM	DATE	POSITION	DESCRIPTION	REVISED	CHECKED	APPROVED
1	X						
2	X						
3	X						
4	X						
5	X						

[Film No.G3U00169A]  
 Parts Symbol Number and Location(LAYER2)

DRAWN H.Hikichi	DATE	CHECKED K.Sugimoto	DATE	DATE 02.07.18	UNIT mm	MODEL PORTABLE RADIO	EQPT. NAME J725P/Pi
DSGN OR ENGR H.Hikichi	DATE	APPROVED N.Kimura	DATE	STORED	SCALE	TITLE I/F BOARD LAYOUT	6/6
KOKUSAIDENKI ENGINEERING CO., LTD				PARTS CODE	DWG. No. G3UK07402	Rev. 0	

	H	G	F	E	D	C	B	A
REVISIONS	SYM	DATE	POSITION	DESCRIPTION	REVISED	CHECKED	APPROVED	
	1							
	2							
	3							
	4							
5								



[Film No.G3U00170A]  
 Parts Symbol Number and Location(LAYER2)

DRAWN H.Hikichi	DATE	CHECKED K.Sugimoto	DATE	DATE 02.07.18	UNIT mm	MODEL PORTABLE RADIO	EQPT. NAME J725P/Pi
DSGN OR ENGR H.Hikichi	DATE	APPROVED N.Kimura	DATE	STORED	SCALE	TITLE UDC BOARD LAYOUT	5/5
KOKUSAIDENKI ENGINEERING CO., LTD				PARTS CODE	DWG. No. G3UK07403	Rev. 0	