



360 Herndon Parkway
Suite 1400
Herndon, VA 20170
<http://www.rheintech.com>

APPENDIX I: INTERNAL EUT PICTURES

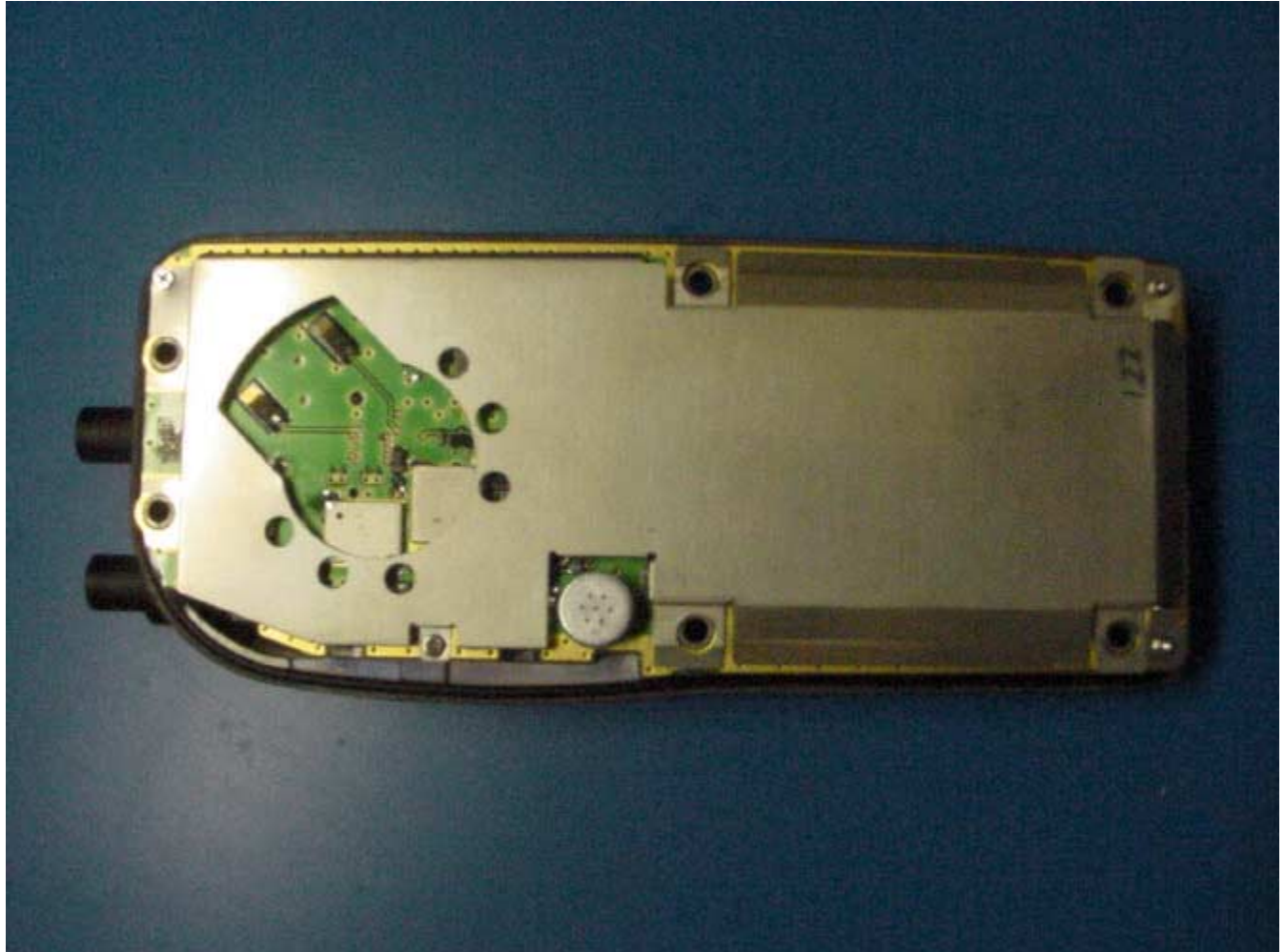
PHOTOGRAPH 4: INSIDE FRONT COVER





360 Herndon Parkway
Suite 1400
Herndon, VA 20170
<http://www.rheintech.com>

PHOTOGRAPH 5: BACK COVER REMOVED





360 Herndon Parkway
Suite 1400
Herndon, VA 20170
<http://www.rheintech.com>

PHOTOGRAPH 6: MAIN PCB BACK SIDE IN CHASSIS





360 Herndon Parkway
Suite 1400
Herndon, VA 20170
<http://www.rheintech.com>

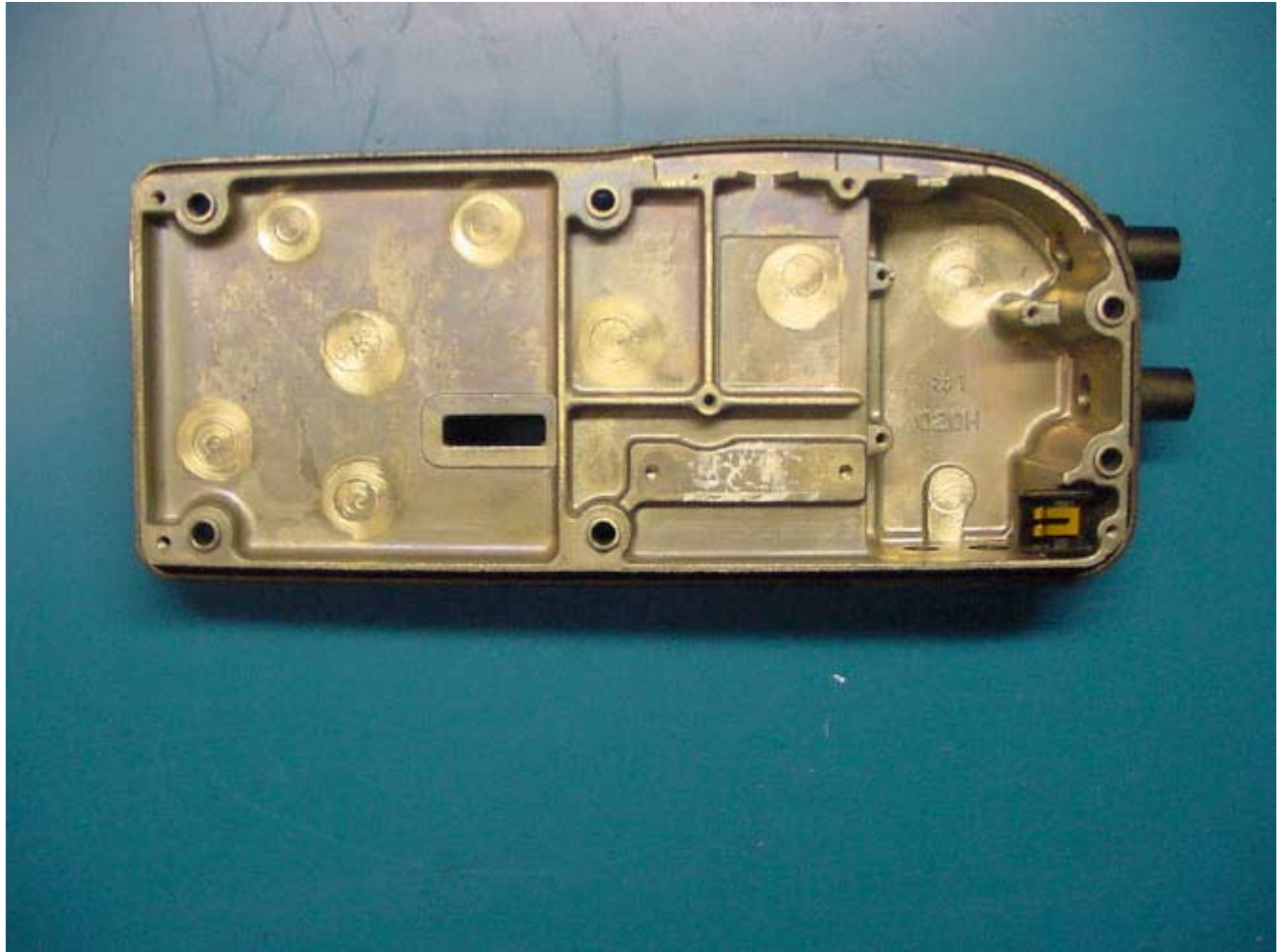
PHOTOGRAPH 7: BACK SIDE OF SMALL PCB IN CHASSIS





360 Herndon Parkway
Suite 1400
Herndon, VA 20170
<http://www.rheintech.com>

PHOTOGRAPH 8: INSIDE CHASSIS PCB'S REMOVED





360 Herndon Parkway
Suite 1400
Herndon, VA 20170
<http://www.rheintech.com>

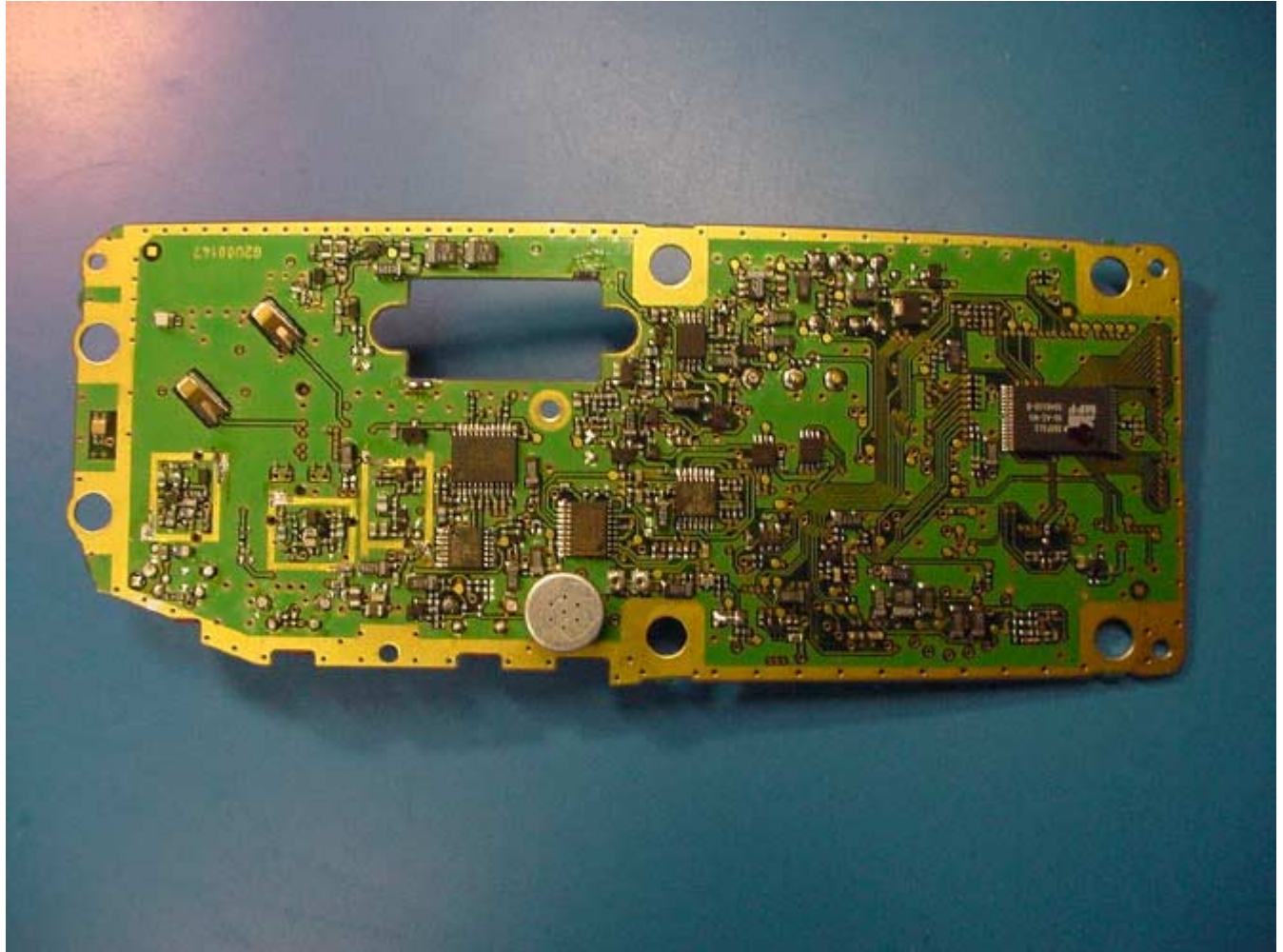
PHOTOGRAPH 9: MAIN PCB WITH SHIELDS FRONT SIDE





360 Herndon Parkway
Suite 1400
Herndon, VA 20170
<http://www.rheintech.com>

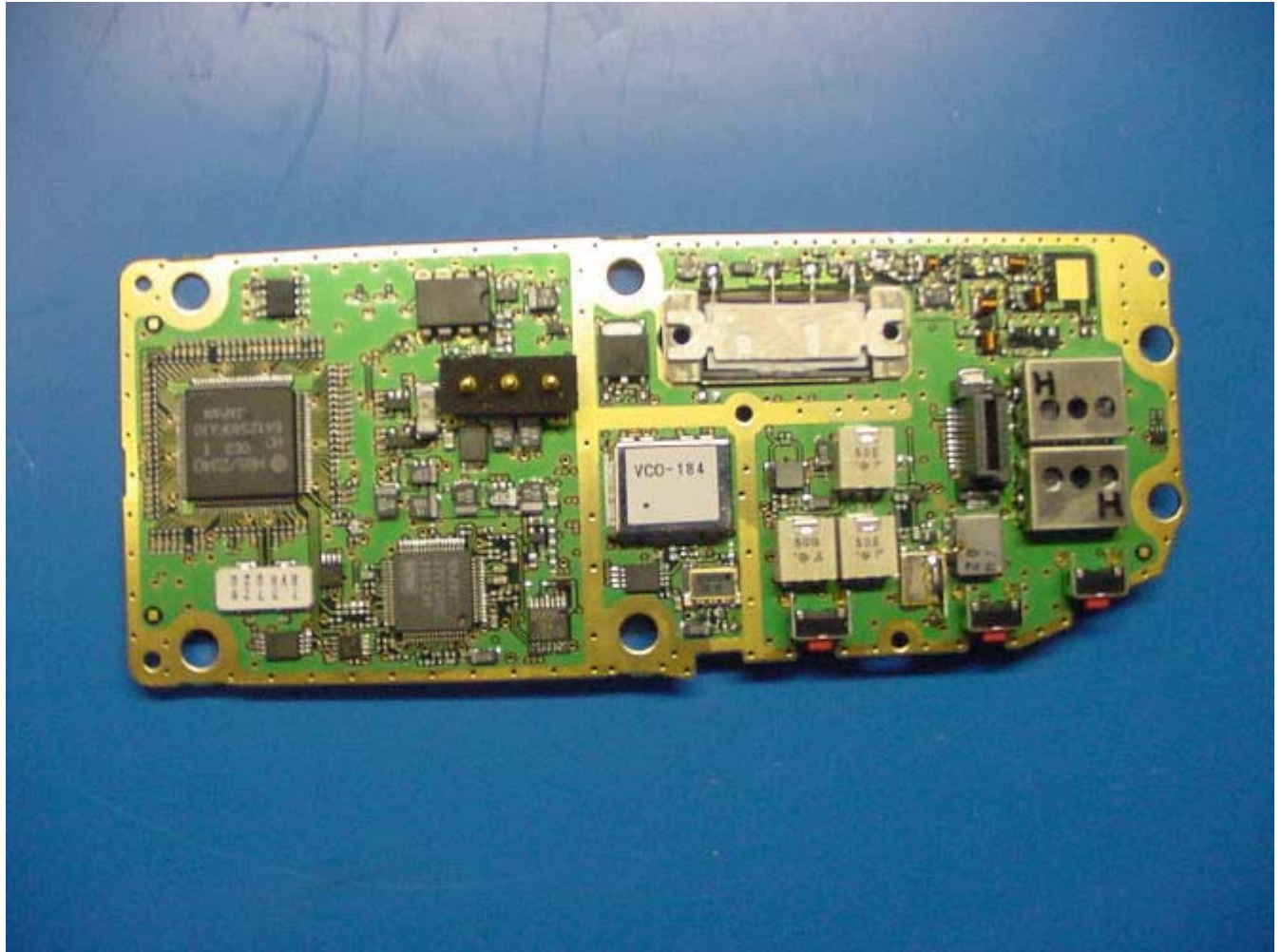
PHOTOGRAPH 10: MAIN PCB FRONT SIDE SHIELDS REMOVED





360 Herndon Parkway
Suite 1400
Herndon, VA 20170
<http://www.rheintech.com>

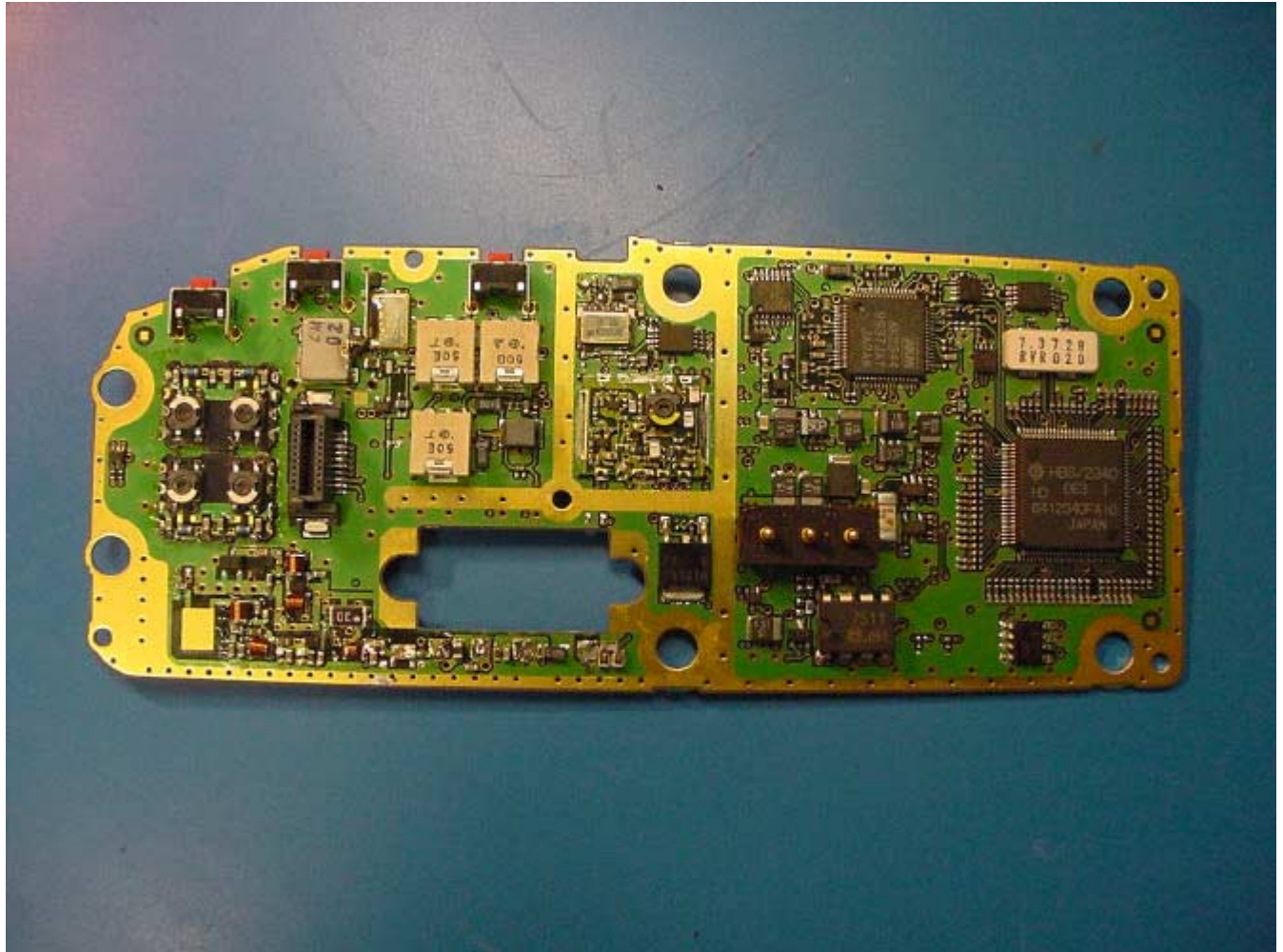
PHOTOGRAPH 11: MAIN PCB WITH SHIELDS BACK SIDE





360 Herndon Parkway
Suite 1400
Herndon, VA 20170
<http://www.rheintech.com>

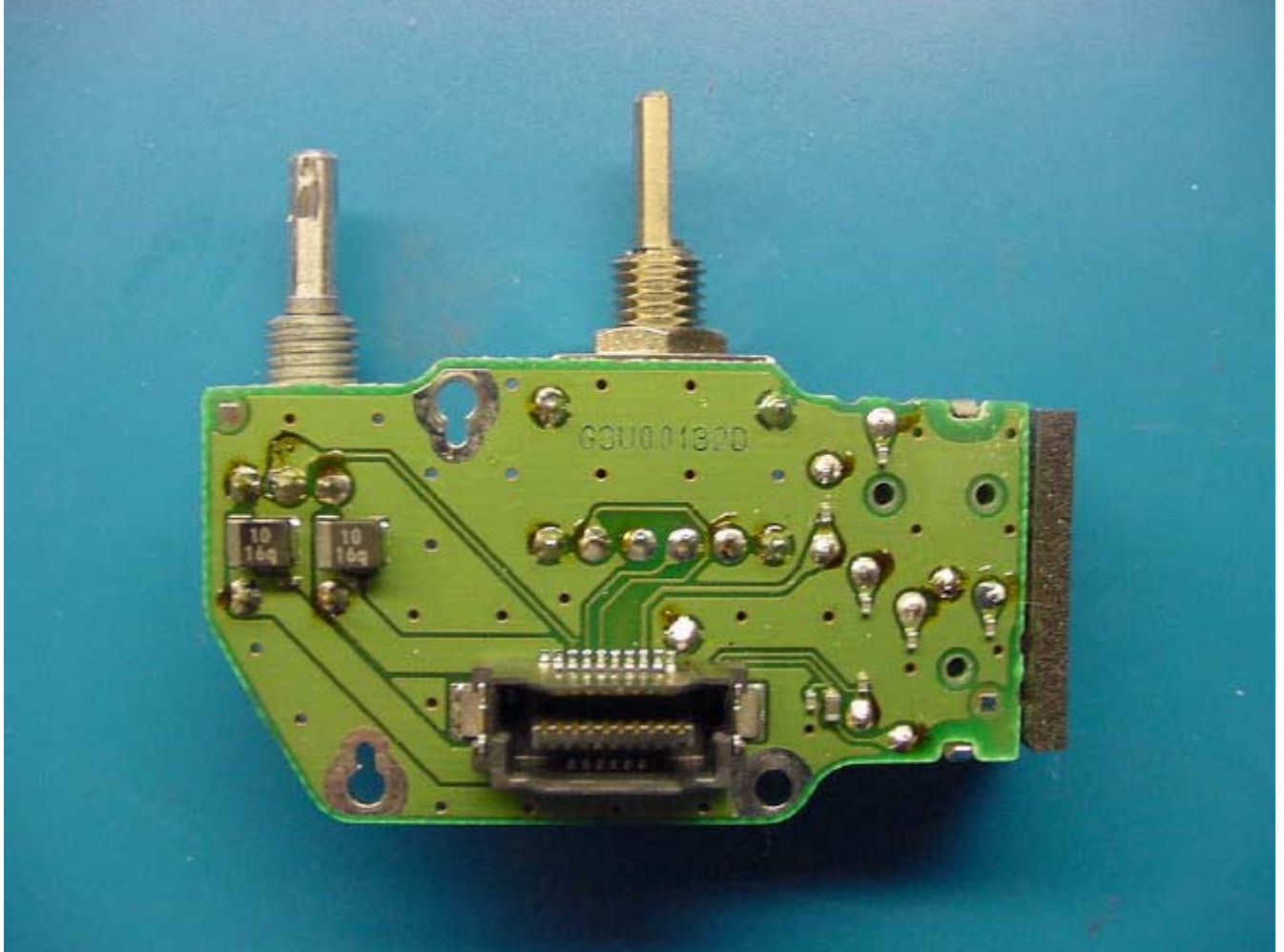
PHOTOGRAPH 12: MAIN PCB WITH SHIELDS REMOVED BACK SIDE





360 Herndon Parkway
Suite 1400
Herndon, VA 20170
<http://www.rheintech.com>

PHOTOGRAPH 13: SMALL PCB FRONT SIDE





360 Herndon Parkway
Suite 1400
Herndon, VA 20170
<http://www.rheintech.com>

PHOTOGRAPH 14: SMALL PCB BACK SIDE

