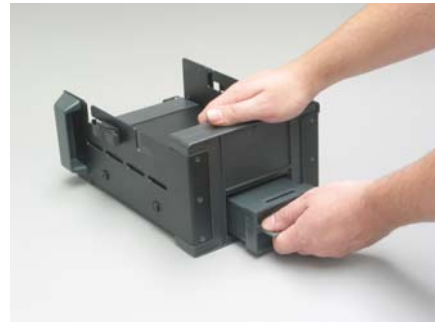


Opening the 2040 for PCB access



Remove the battery cartridge as shown



Using an M3 hex driver remove the cap screws as shown



Grasp the front panel of the 2040 adaptor and gently pull away from the connectors



Using a flat blade screw driver remove the wires from the terminal block to the connector on the battery cartridge housing.



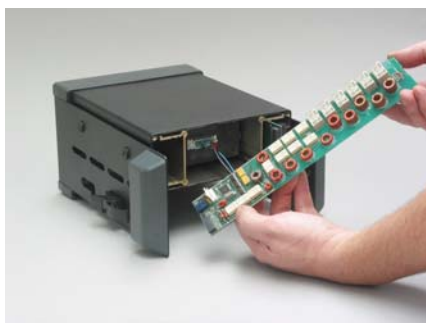
Note the location of the cables before disassembly to enable re-assembly



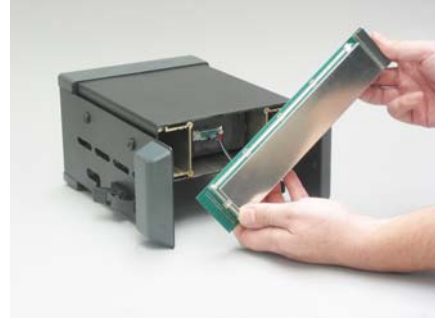
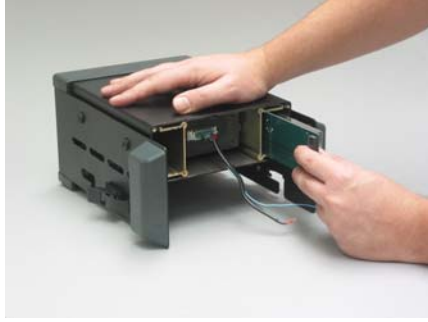
The front panel is now free and can be removed



Grasp the PCB edge of the automatic antenna tuner PCB and slide out



Grasp the PCB edge of the battery charger PCB and gently pull out



To access components on the battery charger PCB the RF shield must be un-soldered.

