

**EXHIBIT 9A****INTERNAL PHOTOGRAPHS**

(Pursuant to FCC Part 2.1033(b)(7) and 2.1033(c)(12) and RSP 100 Annex C)

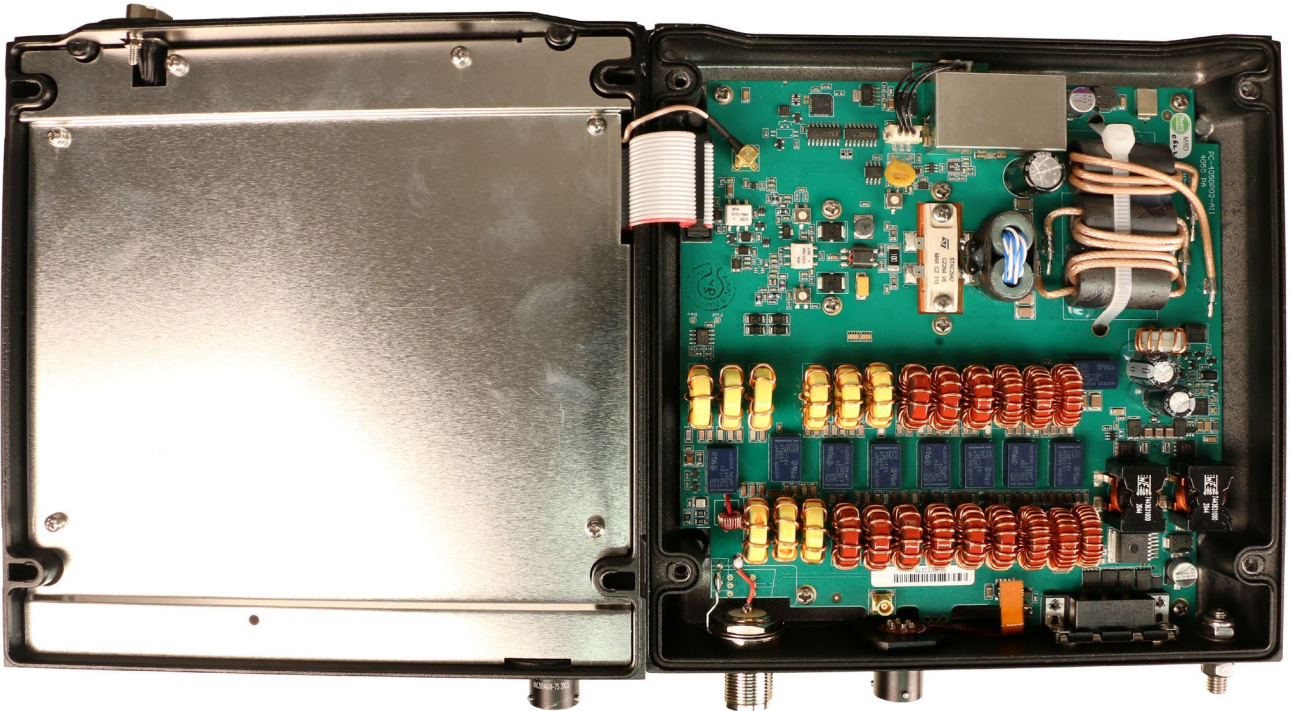
The following photographs are attached.

<u>Title</u>	<u>Exhibit</u>
1. Open Shell With Shields View	9A
2. Open Shell Without Shields View	9B
3. Micro PCB With Shield View	9C
4. Micro PCB Without Shield View	9D
5. Micro PCB Bottom View	9E
6. PA PCB Top View	9F
7. PA PCB Bottom View	9G
8. Rear Interface PCB Top View	9H
9. Rear Interface PCB Bottom View	9I
10. Control Head PCB Top View	9J
11. Control Head PCB Bottom View	9K

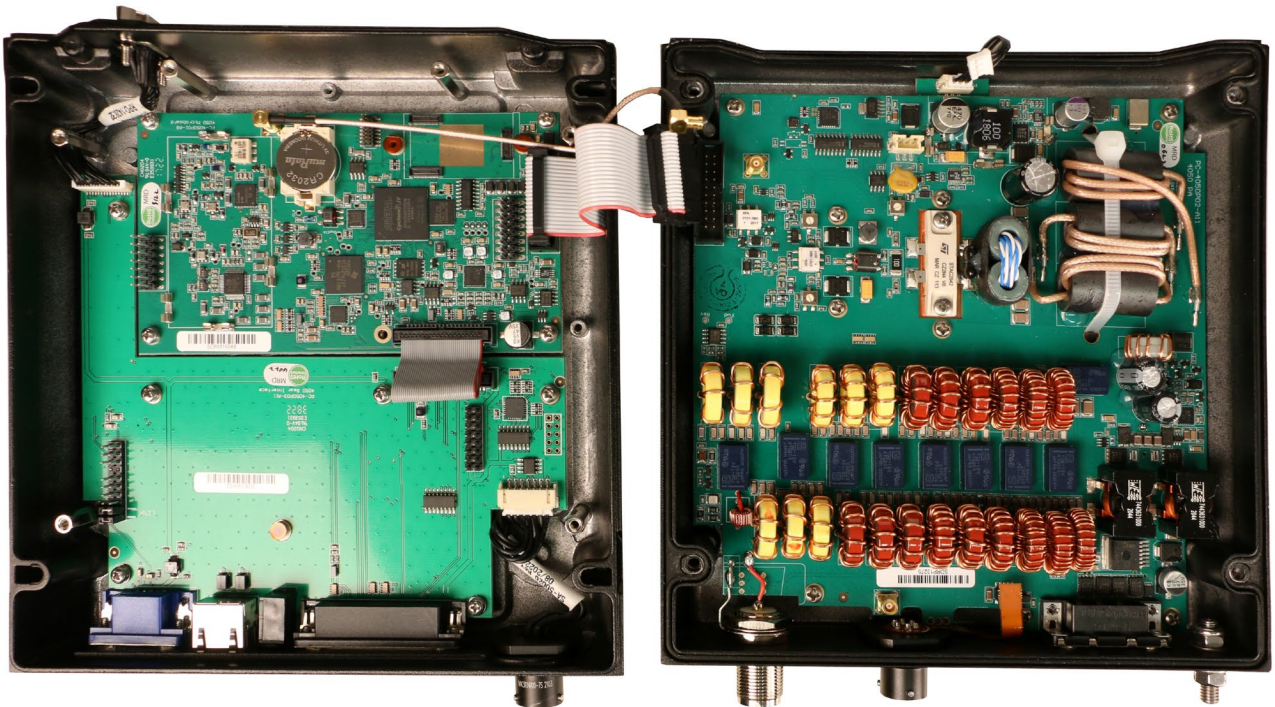
**Note:** All images are the same for the 4050ip and 4050se variants.

Applicant: Barrett Communications Pty Ltd  
FCC ID: OW4-4050IP / IC: 6468A-4050IP

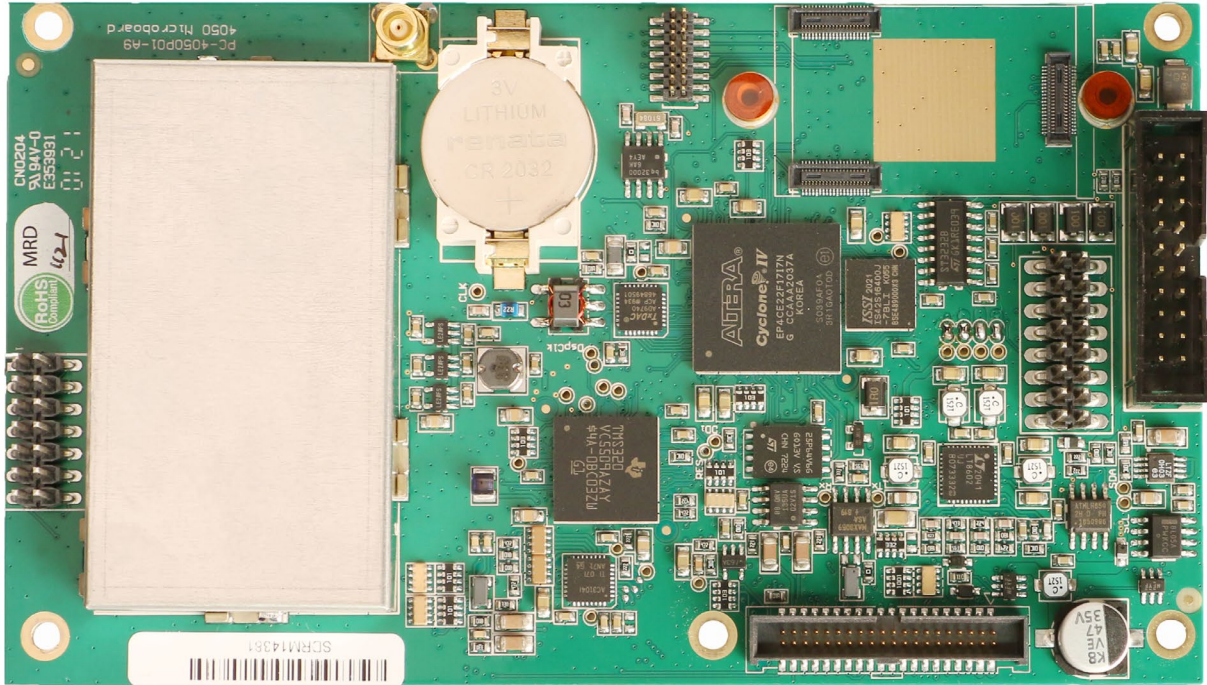
### Exhibit 9A – Open Shell With Shields View



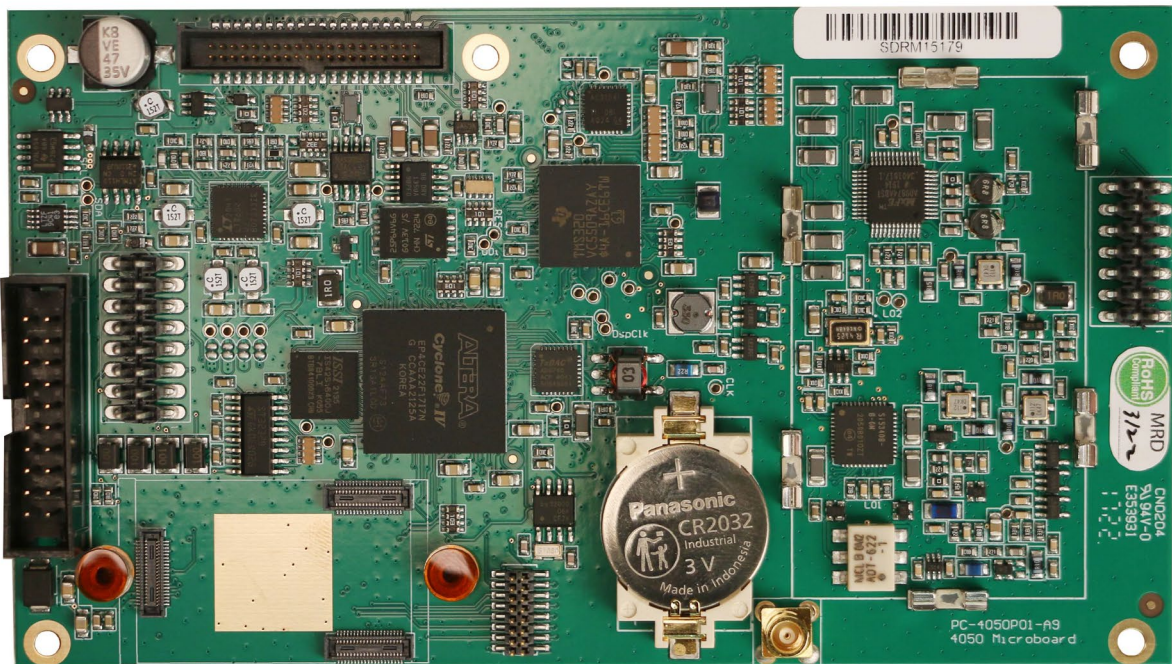
### Exhibit 9B – Open Shell Without Shields View



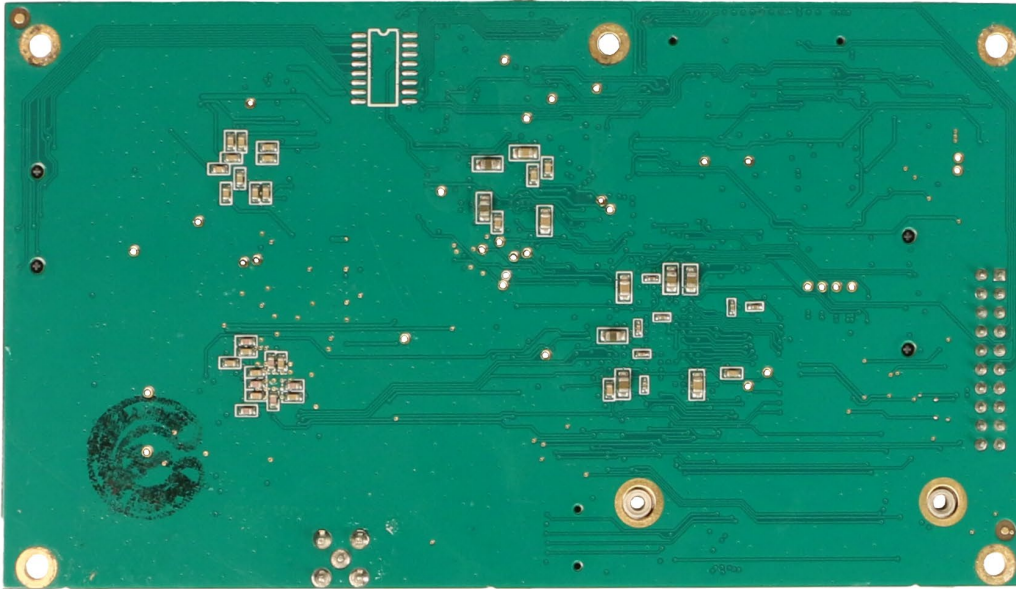
### Exhibit 9C – Micro PCB With Shield View



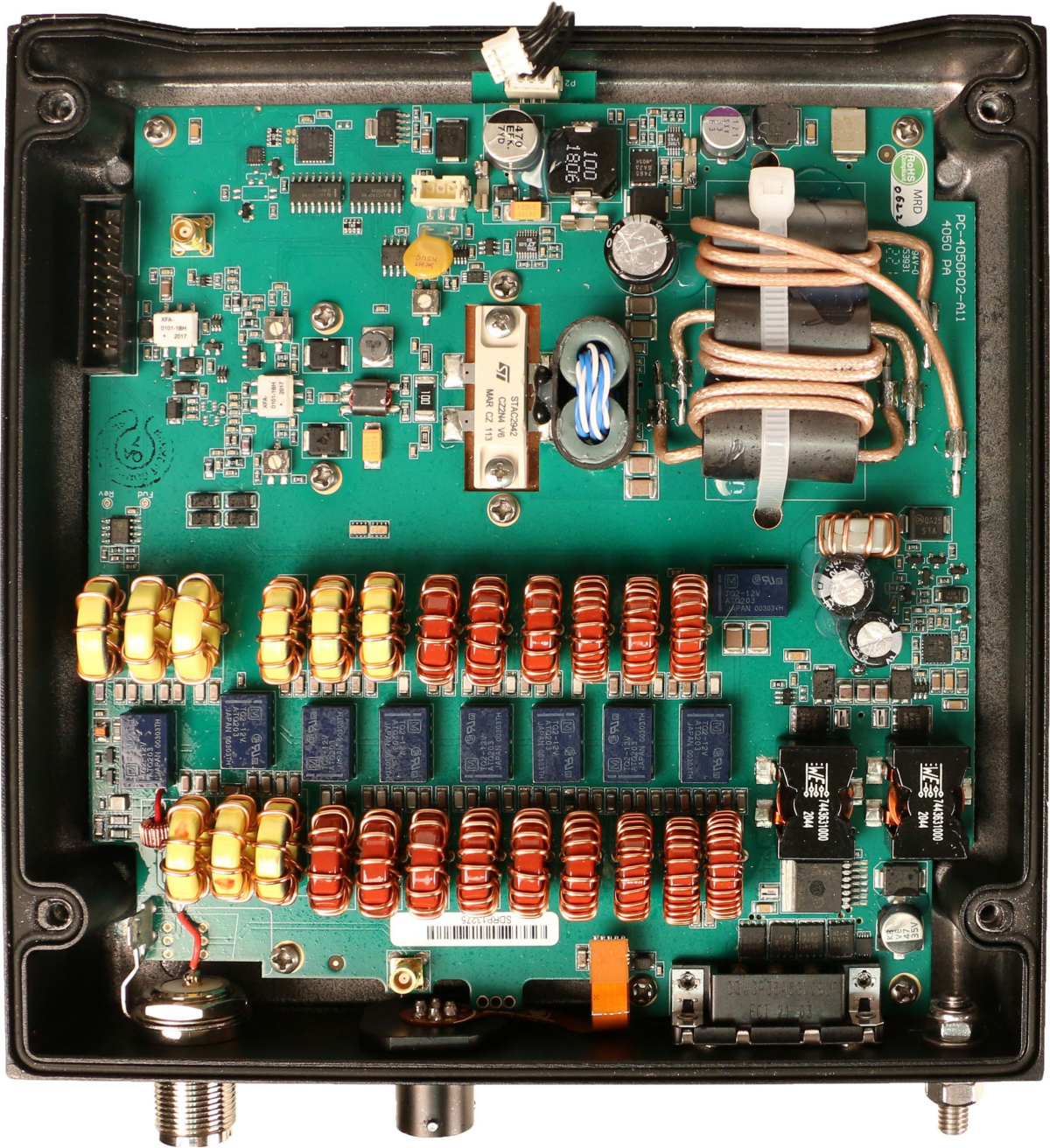
### Exhibit 9D – Micro PCB Without Shield View



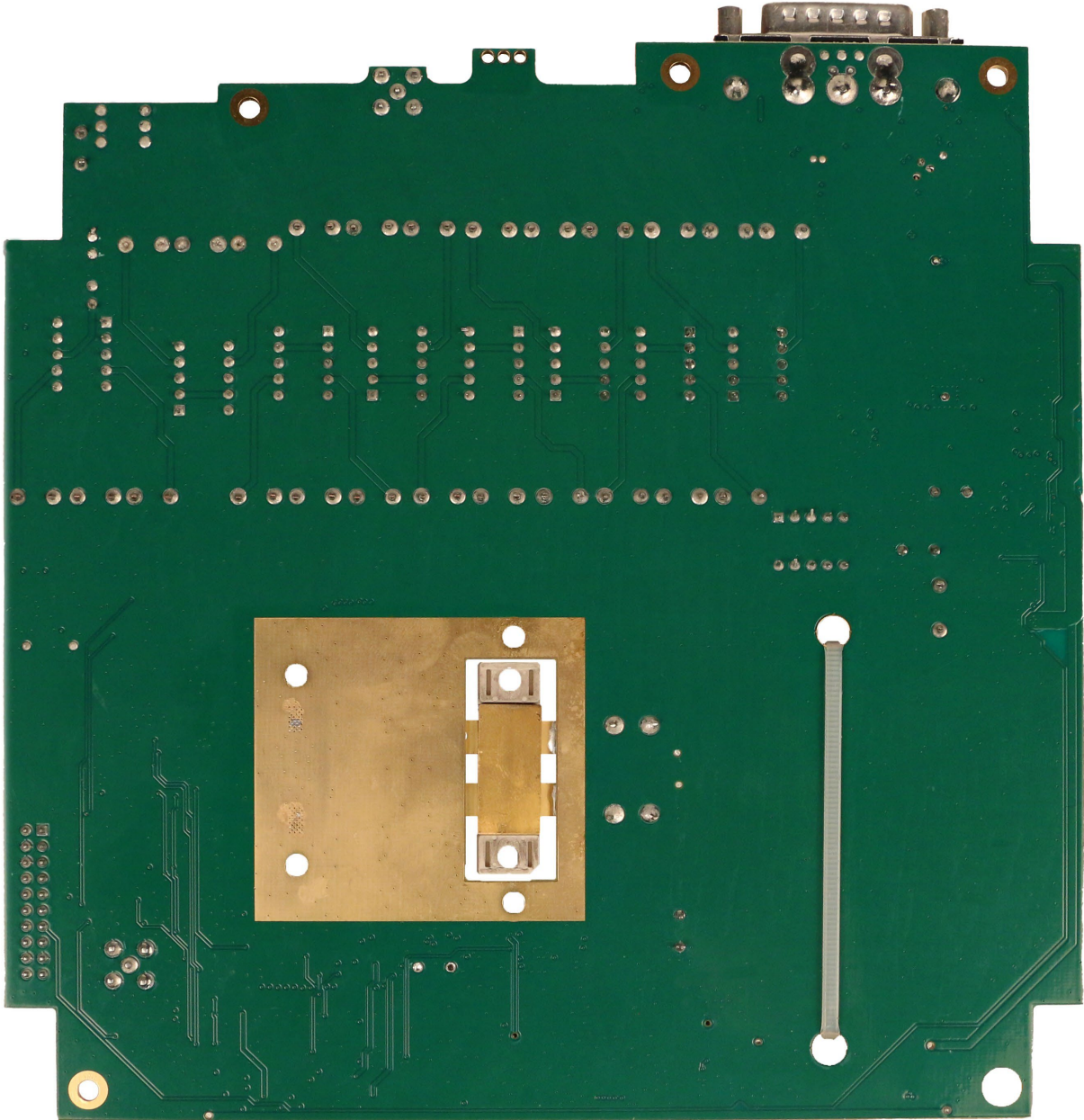
**Exhibit 9E – Micro PCB Bottom View**



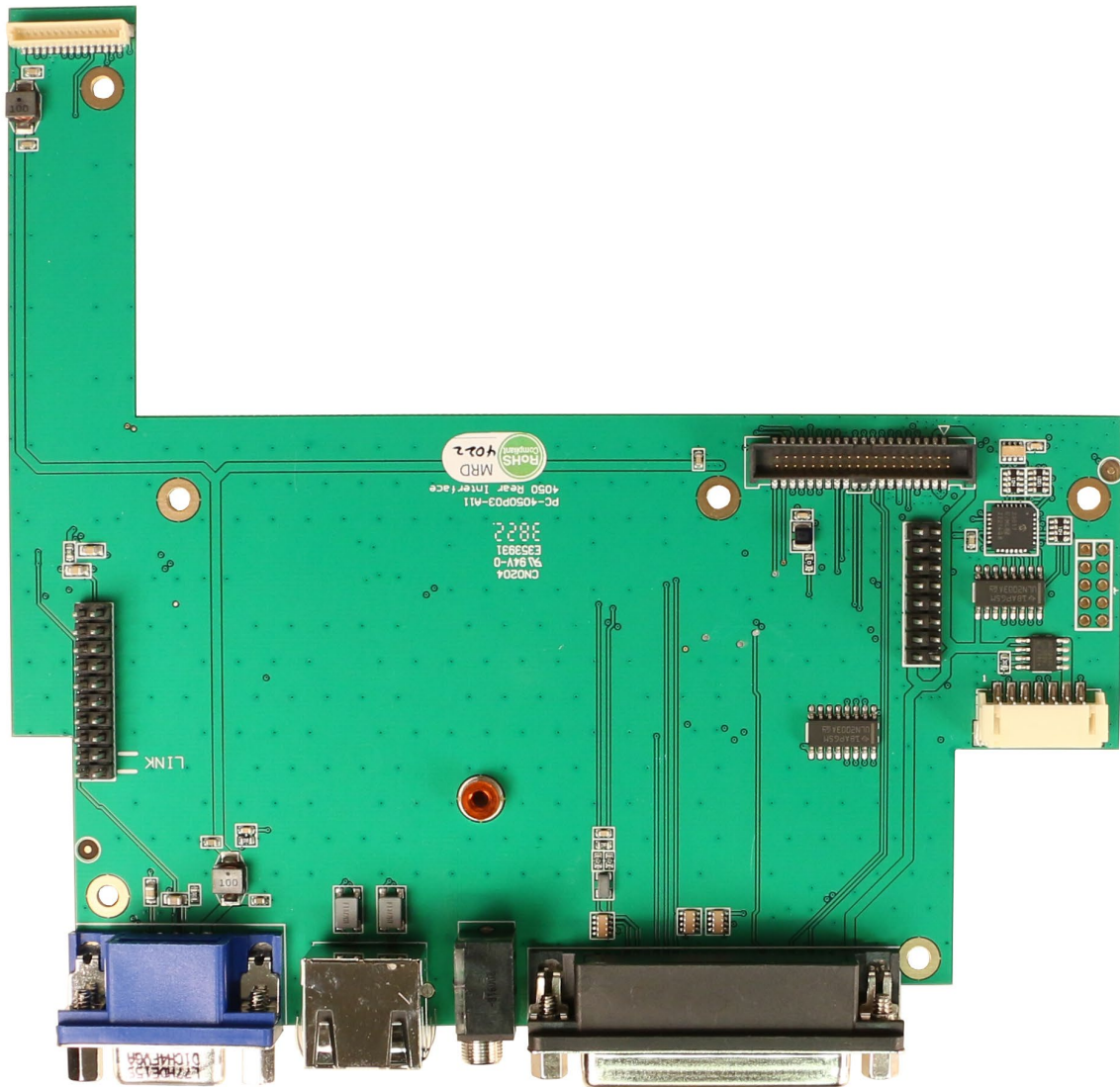
**Exhibit 9F – PA PCB Top View**



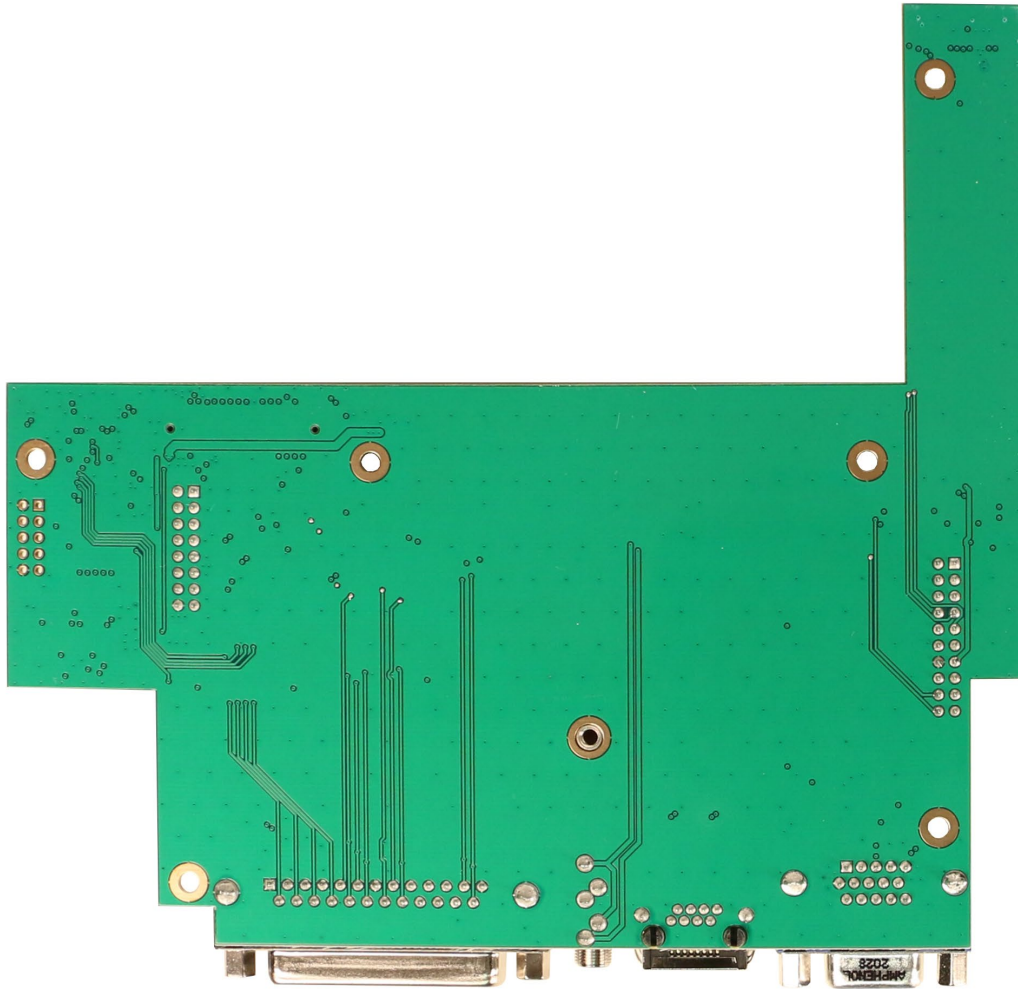
**Exhibit 9G – PA PCB Bottom View**



**Exhibit 9H – Rear Interface PCB Top View**

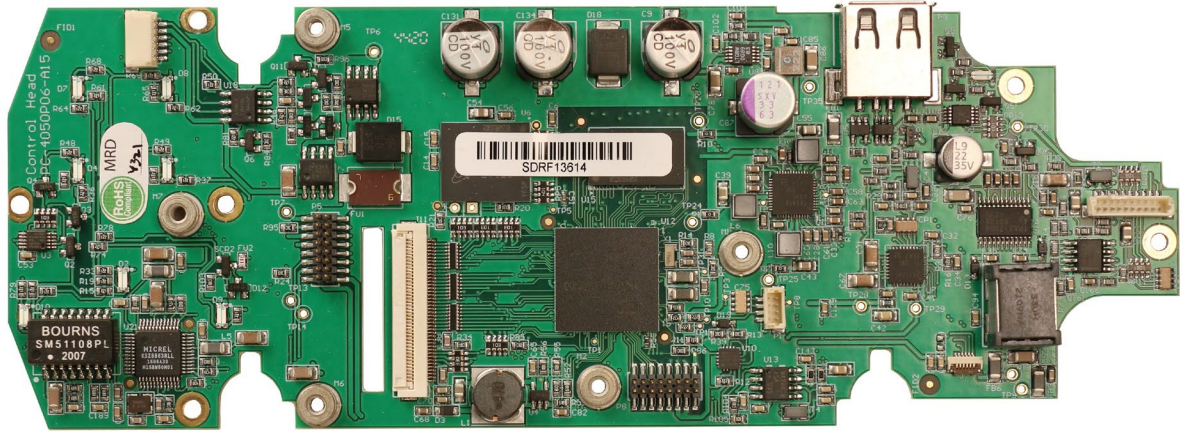


**Exhibit 9I – Rear Interface PCB Bottom View**

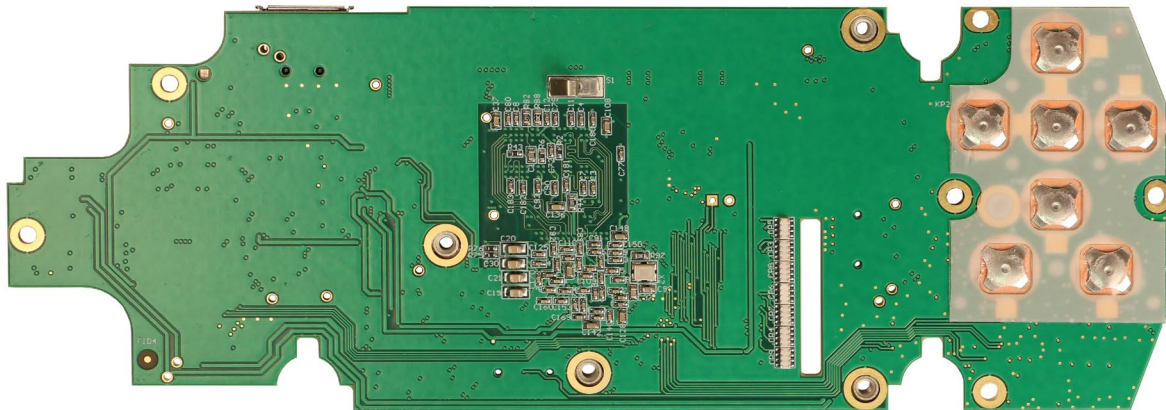




**Exhibit 9J – Control Head PCB Top View**



**Exhibit 9K – Control Head PCB Bottom View**



**\*\*\* END \*\*\***