

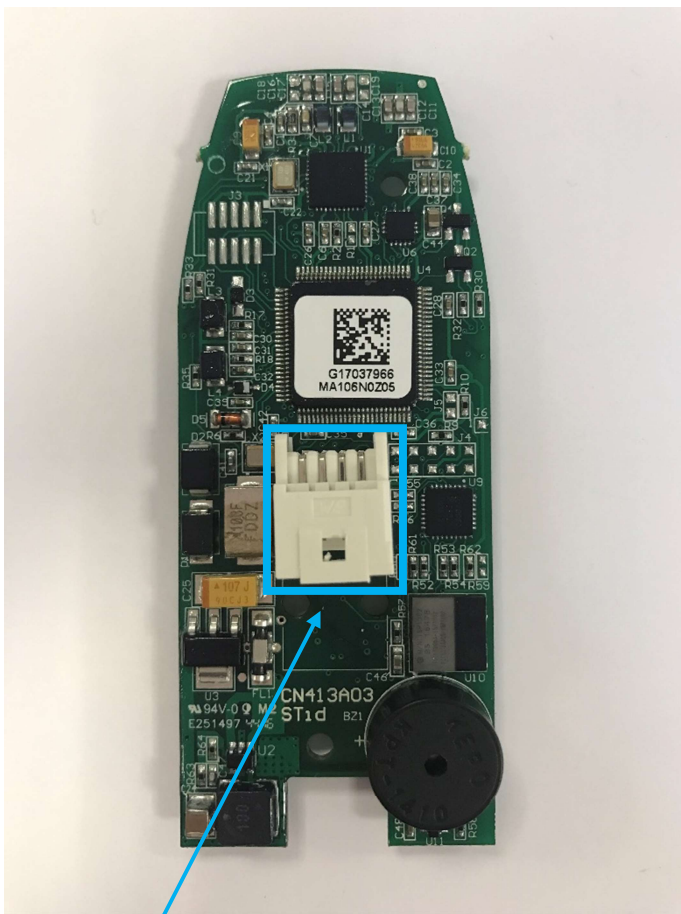
ARC1S-R33-B, ARC1S-S33-B & ARC1S-W33-B have the same hardware with RS485 communication and plug and unplug cable, the difference is software version.

R : Reader is communication's Master

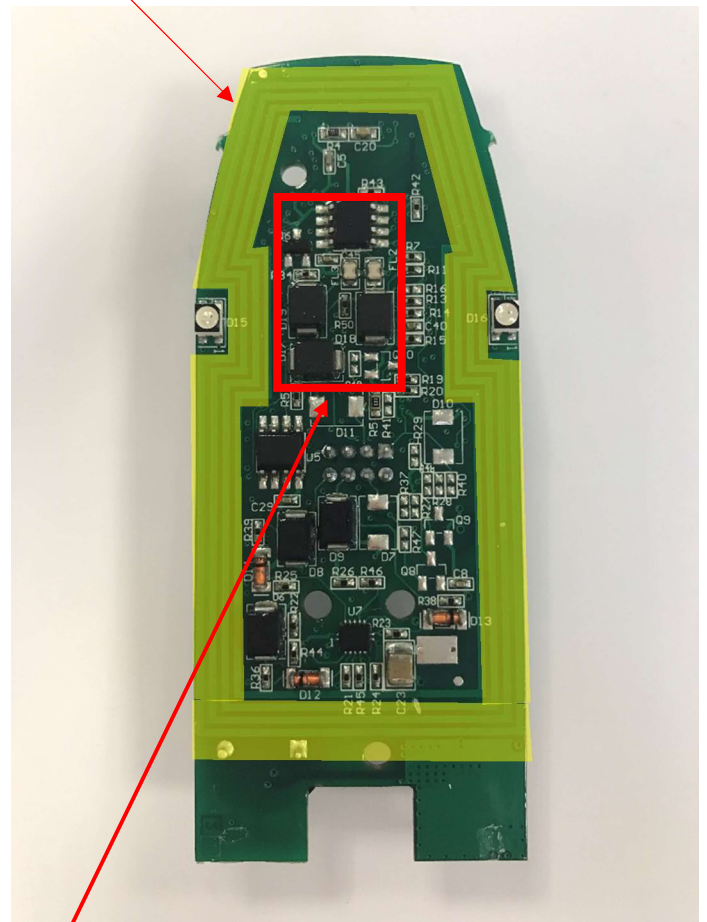
S : Reader is communication's Master and communication is protect by cryptographic keys

W : Reader is communication's Slave

Loop antenna, directly printed on to the PCB



Plug and unplug cable

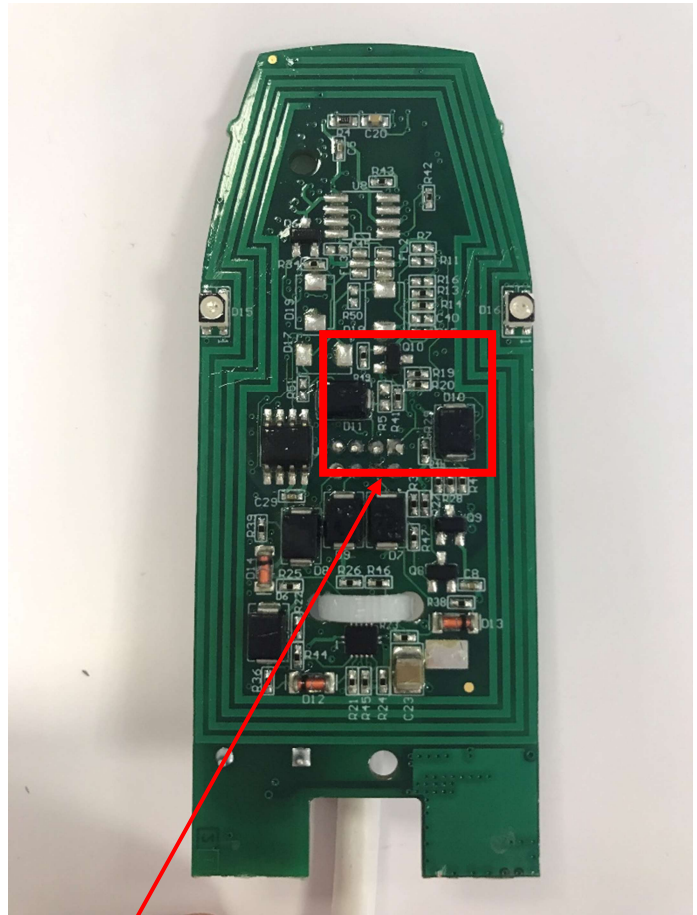


RS485 communication protocol

ARC1S-R31-A, ARC1S-S31-A have the same hardware with TTL communication and cable directly plug on PCB.

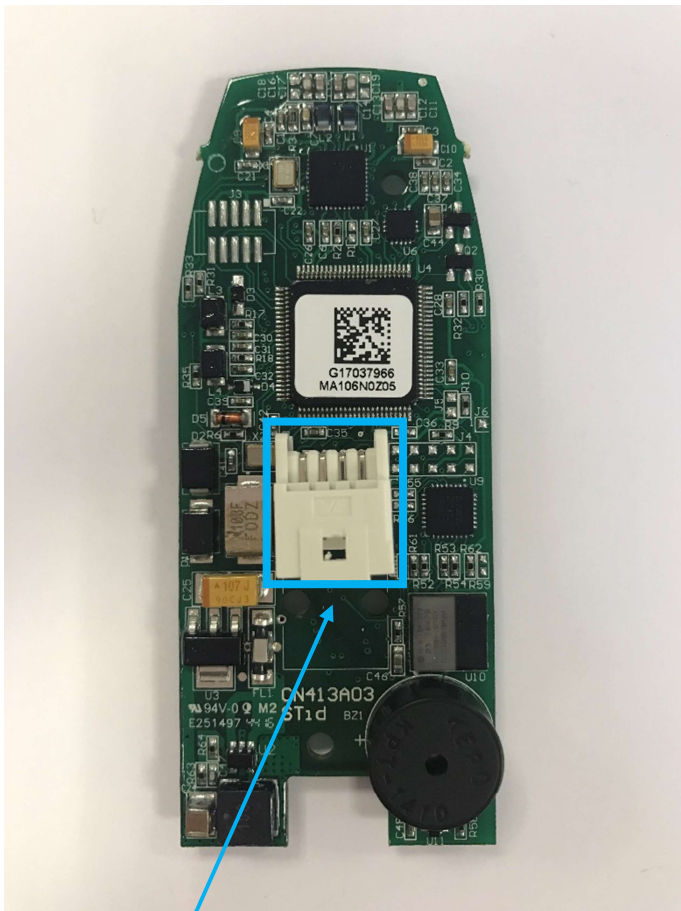


Cable directly plug on PCB

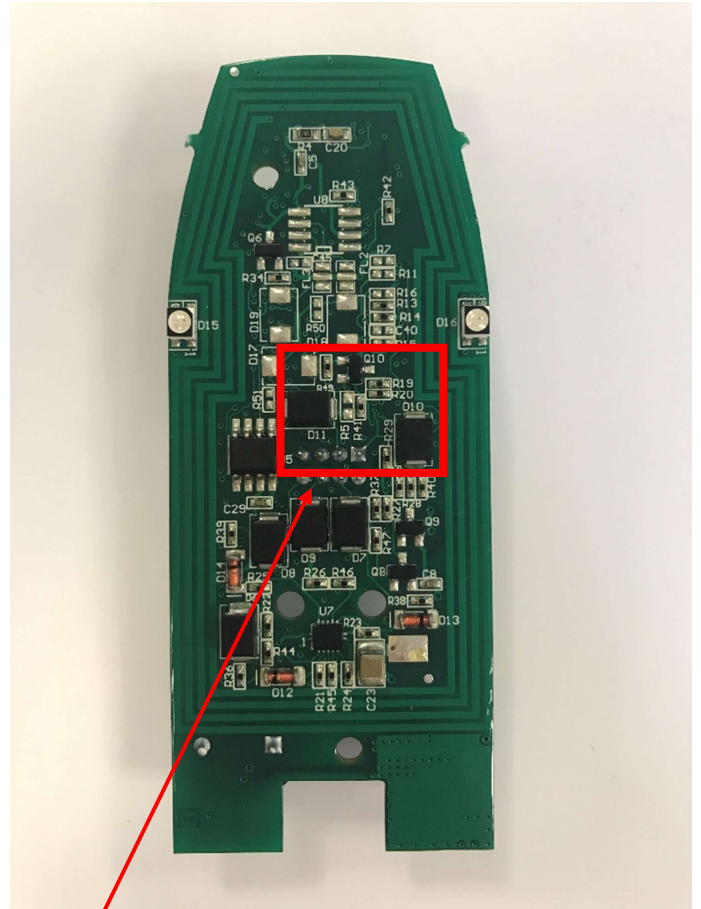


TTL communication protocol

ARC1S-R31-B, ARC1S-S31-B have the same hardware with TTL communication and plug and unplug cable.



Plug and unplug cable



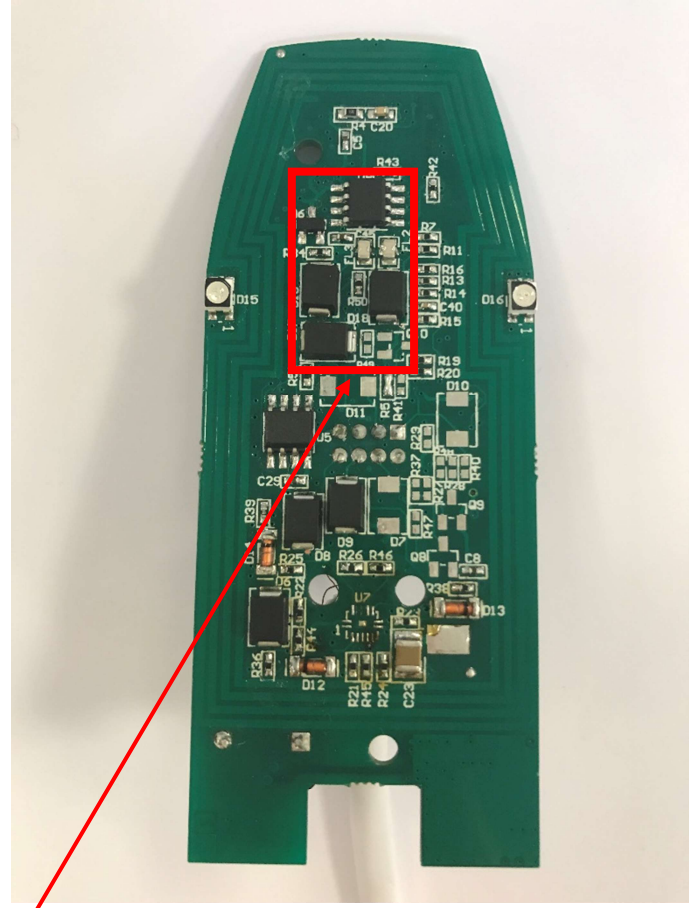
TTL communication protocol



ARC1S-R33-A, ARC1S-S33-A & ARC1S-W33-A have the same hardware with RS485 communication and plug and unplug cable.



Cable directly plug on PCB



RS485 communication protocol