



Applicant:	Kyocera
FCC ID:	OVFS13503CB
Report #:	CT-S1350-9A-0411-R0

EXHIBIT 9 APPENDIX A: SAR VALIDATION PLOTS

Validation for HEAD

Applicant:	Kyocera
FCC ID:	OVFS13503CB
Report #:	CT-S1350-9A-0411-R0

Test Laboratory: Comptest/Kyocera

Date: 04/12/2011

835MHz Validation @ 20dbm, Probe #1618, DAE#530, Dipole #4d019

Communication System: CW, Frequency: 835 MHz, Duty Cycle: 1:1

Medium: Head 835 MHz, Medium parameters used: $f = 835 \text{ MHz}$; $\sigma = 0.9 \text{ mho/m}$; $\epsilon_r = 40$; $\rho = 1000 \text{ kg/m}^3$

Phantom: SAM 12, Phantom section: Flat Section

DASY4 Configuration:

Probe: ET3DV6 - SN1618, ConvF(6.52, 6.52, 6.52), Calibrated: 8/11/2010

Sensor-Surface: 4mm (Mechanical Surface Detection),

Electronics: DAE4 Sn530, Calibrated: 4/23/2010

Measurement SW: DASY4, V4.7 Build 80

Postprocessing SW: SEMCAD, V1.8 Build 186

Temperature:

Room T = 21.8̄ 1 deg C, Liquid T = 22.0̄ 1 deg C

835MHz Validation/Area Scan (61x121x1): Measurement grid: dx=15mm, dy=15mm

Maximum value of SAR (interpolated) = 1.06 mW/g

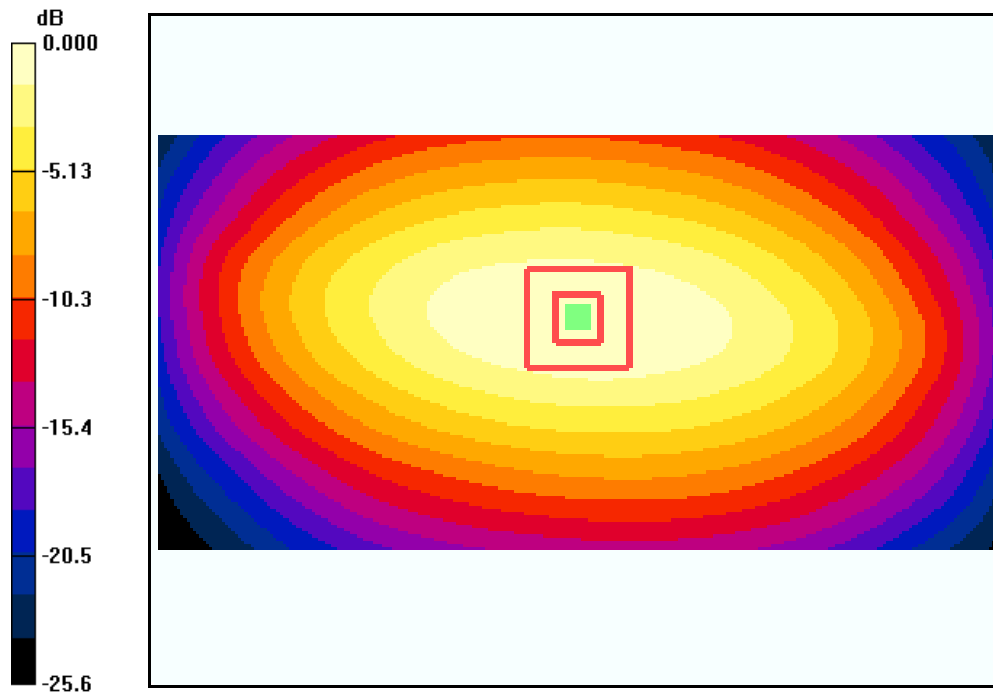
835MHz Validation/Zoom Scan (7x7x7)/Cube 0: Measurement grid: dx=5mm, dy=5mm, dz=5mm

Reference Value = 34.8 V/m; Power Drift = -0.101 dB

Peak SAR (extrapolated) = 1.43 W/kg

SAR(1 g) = 0.975 mW/g; SAR(10 g) = 0.639 mW/g

Maximum value of SAR (measured) = 1.05 mW/g

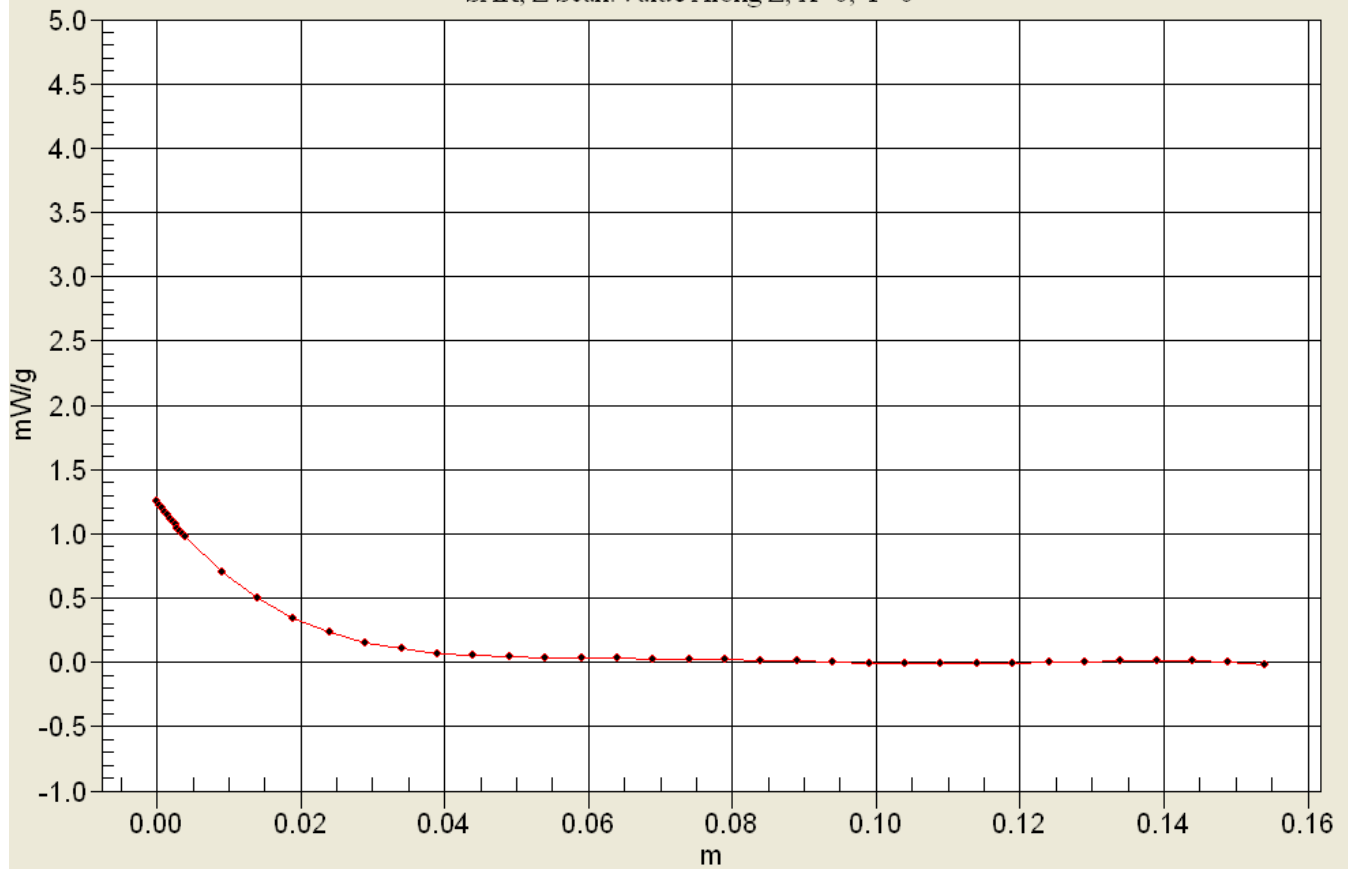


0 dB = 1.06mW/g



Applicant:	Kyocera
FCC ID:	OVFS13503CB
Report #:	CT-S1350-9A-0411-R0

Interpolated SAR(x,y,z,f0)
SAR; Z Scan: Value Along Z, X=0, Y=0



Applicant:	Kyocera
FCC ID:	OVFS13503CB
Report #:	CT-S1350-9A-0411-R0

Test Laboratory: Comptest/Kyocera

Date: 04/11/2011

1800MHz Validation, Probe #3078 DAE #602, Dipole #220

Communication System: CW 1800Mhz, Frequency: 1800 MHz, Duty Cycle: 1:1

Medium: H1800, Medium parameters used: $f = 1800 \text{ MHz}$; $\sigma = 1.41 \text{ mho/m}$; $\epsilon_r = 39$; $\rho = 1000 \text{ kg/m}^3$

Phantom: SAM 12, Phantom section: Flat Section

DASY4 Configuration:

Probe: ES3DV3 - SN3078, ConvF(4.97, 4.97, 4.97), Calibrated: 7/14/2010

Sensor-Surface: 4mm (Mechanical Surface Detection),

Electronics: DAE4 Sn602, Calibrated: 7/14/2010

Measurement SW: DASY4, V4.7 Build 80

Postprocessing SW: SEMCAD, V1.8 Build 186

Temperature:

Room T = 21.8 +/- 1 deg C, Liquid T = 22.0 +/- 1 deg C

1800Mhz/Area Scan (41x71x1): Measurement grid: dx=15mm, dy=15mm

Maximum value of SAR (interpolated) = 4.53 mW/g

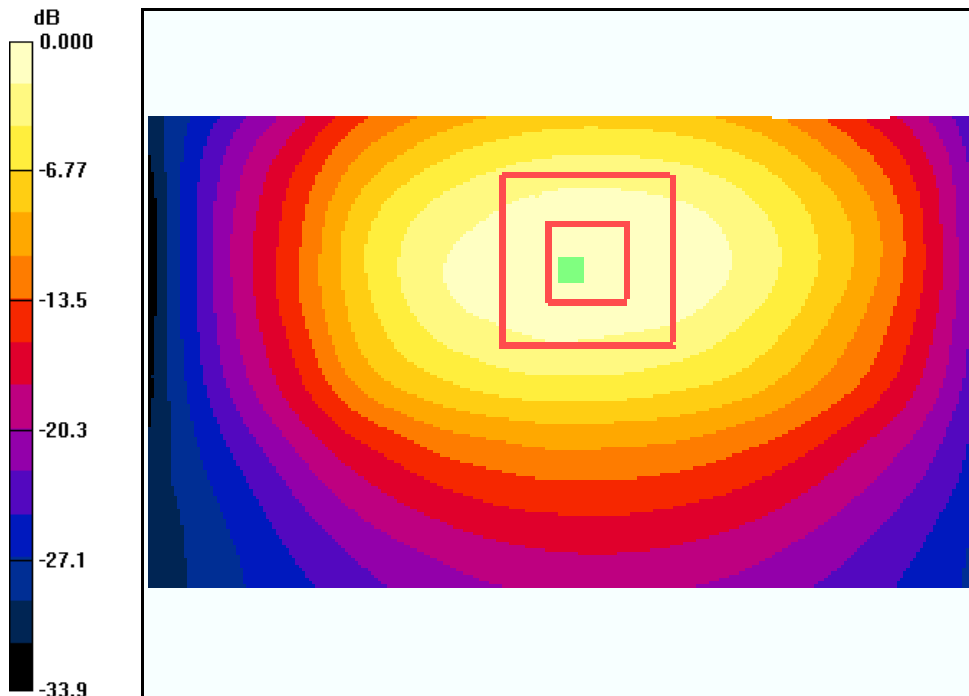
1800Mhz/Zoom Scan (7x7x7)/Cube 0: Measurement grid: dx=5mm, dy=5mm, dz=5mm

Reference Value = 50.3 V/m; Power Drift = 0.061 dB

Peak SAR (extrapolated) = 7.36 W/kg

SAR(1 g) = 3.89 mW/g; SAR(10 g) = 2 mW/g

Maximum value of SAR (measured) = 4.37 mW/g

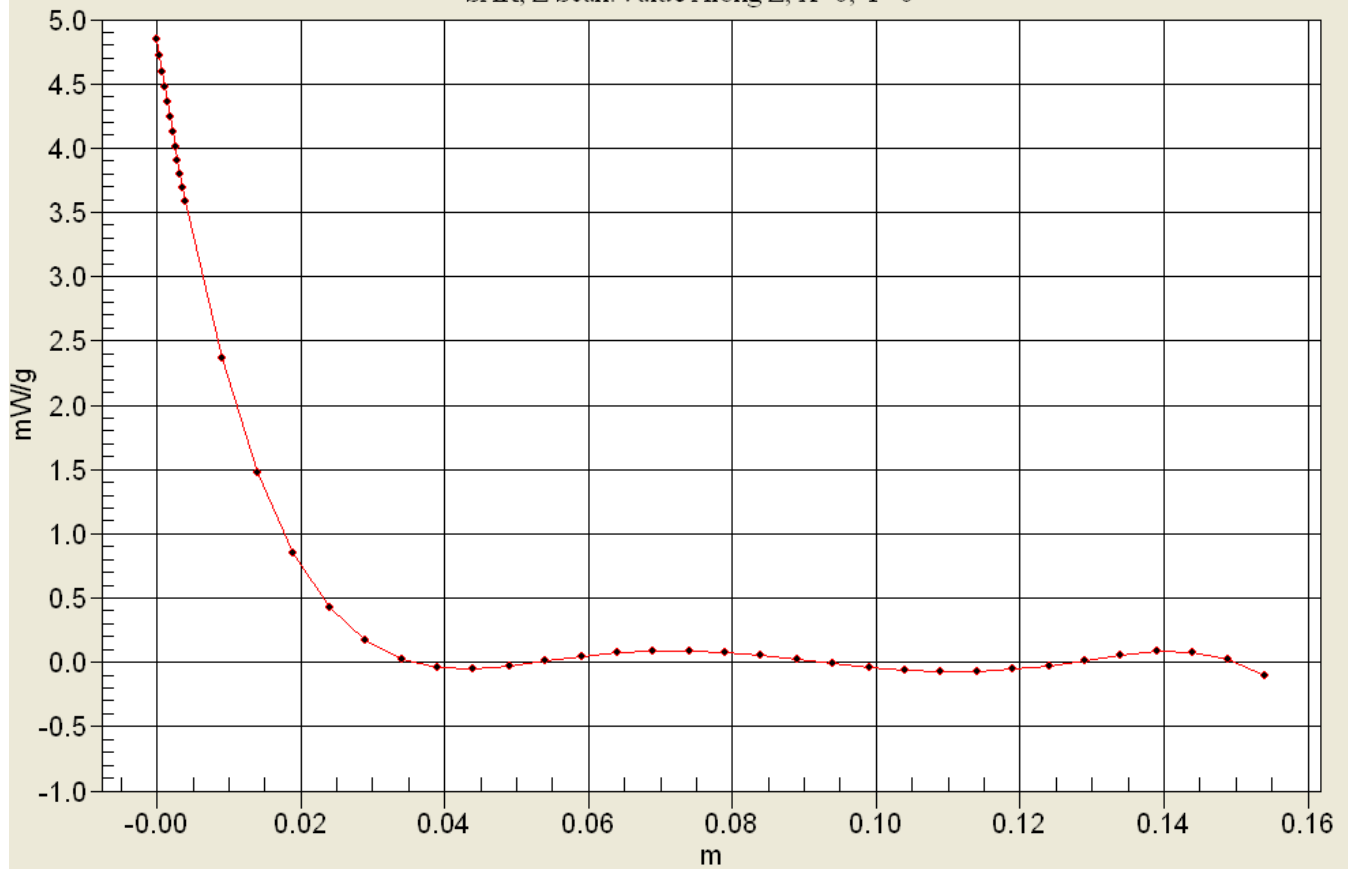


0 dB = 4.37mW/g



Applicant:	Kyocera
FCC ID:	OVFS13503CB
Report #:	CT-S1350-9A-0411-R0

Interpolated SAR(x,y,z,f0)
SAR; Z Scan: Value Along Z, X=0, Y=0



Applicant:	Kyocera
FCC ID:	OVFS13503CB
Report #:	CT-S1350-9A-0411-R0

Test Laboratory: Comptest/Kyocera

Date: 04/11/2011

1900Mhz Validation @ 20dBm Probe 3035, DAE 675 and Dipole 5d016

Communication System: CW, Frequency: 1900 MHz, Duty Cycle: 1:1

Medium: HSL1900, Medium parameters used (interpolated): $f = 1900$ MHz; $\sigma = 1.4$ mho/m; $\epsilon_r = 38.7$; $\rho = 1000$ kg/m³

Phantom: SAM 12, Phantom section: Flat Section

DASY4 Configuration:

Probe: ES3DV3 - SN3035, ConvF(5, 5, 5), Calibrated: 9/9/2010

Sensor-Surface: 4mm (Mechanical Surface Detection),

Electronics: DAE4 Sn675, Calibrated: 4/21/2010

Measurement SW: DASY4, V4.7 Build 80

Postprocessing SW: SEMCAD, V1.8 Build 186

Temperature:

Room T = 21.8 +/- 1 deg C, Liquid T = 22.0 +/- 1 deg C

1900MHz Validation @20dBm/Area Scan (61x61x1): Measurement grid: dx=15mm, dy=15mm

Maximum value of SAR (interpolated) = 4.70 mW/g

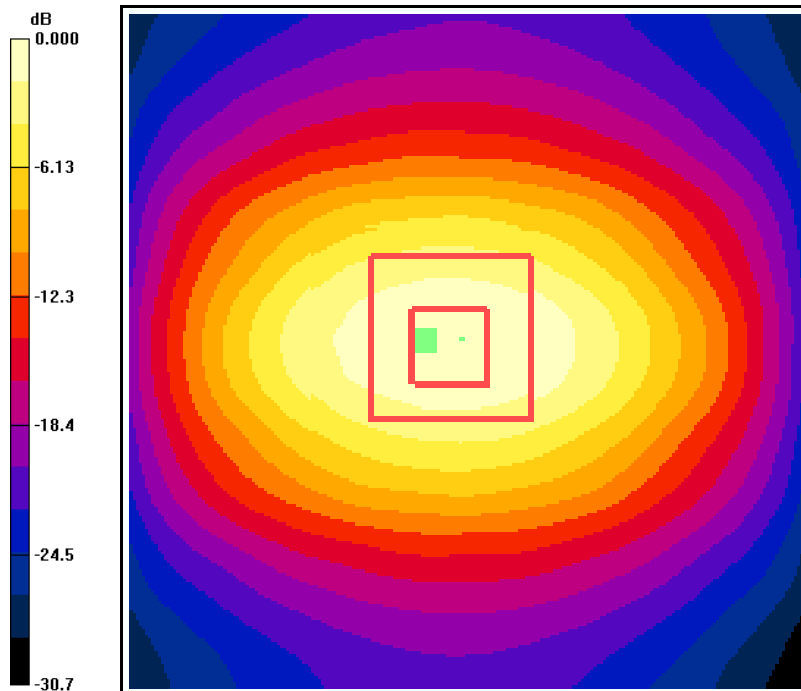
1900MHz Validation @20dBm/Zoom Scan (7x7x7)/Cube 0: Measurement grid: dx=5mm, dy=5mm, dz=5mm

Reference Value = 56.7 V/m; Power Drift = -0.070 dB

Peak SAR (extrapolated) = 6.88 W/kg

SAR(1 g) = 3.83 mW/g; SAR(10 g) = 2.01 mW/g

Maximum value of SAR (measured) = 4.29 mW/g



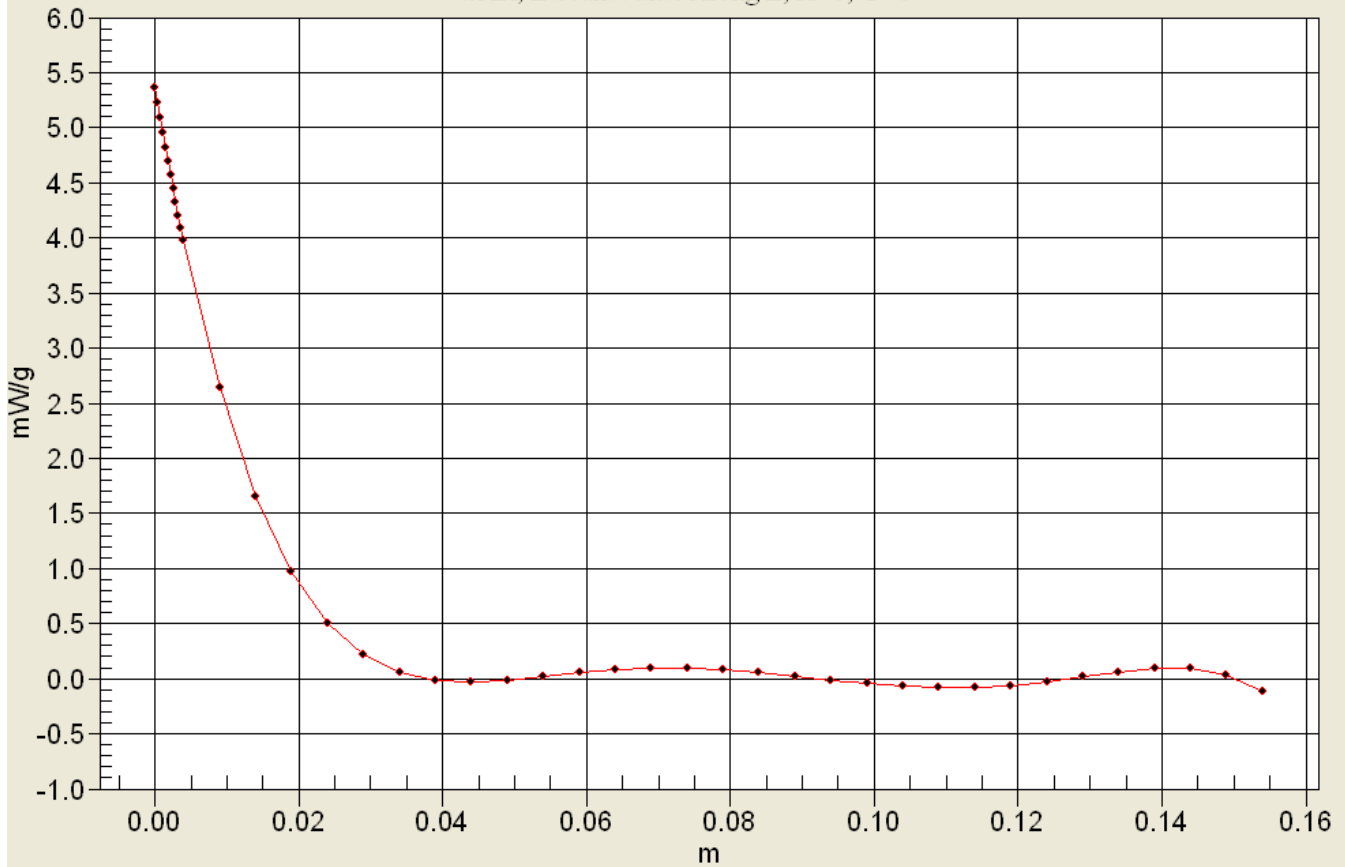
0 dB = 4.29mW/g



Applicant:	Kyocera
FCC ID:	OVFS13503CB
Report #:	CT-S1350-9A-0411-R0

Interpolated SAR(x,y,z,f0)

SAR; Z Scan: Value Along Z, X=0, Y=0





Applicant:	Kyocera
FCC ID:	OVFS13503CB
Report #:	CT-S1350-9A-0411-R0

Validation for BODY

Applicant:	Kyocera
FCC ID:	OVFS13503CB
Report #:	CT-S1350-9A-0411-R0

Test Laboratory: Comptest/Kyocera

Date: 04/12/2011

835MHz Validation (in Muscle), Probe #3078, DAE #602, Dipole #4d019

Communication System: CW, Frequency: 835 MHz, Duty Cycle: 1:1

Medium: M800, Medium parameters used: $f = 835 \text{ MHz}$; $\sigma = 0.95 \text{ mho/m}$; $\epsilon_r = 54.4$; $\rho = 1000 \text{ kg/m}^3$

Phantom: SAM 12, Phantom section: Flat Section

DASY4 Configuration:

Probe: ES3DV3 - SN3078, ConvF(5.82, 5.82, 5.82), Calibrated: 7/14/2010

Sensor-Surface: 4mm (Mechanical Surface Detection),

Electronics: DAE4 Sn602, Calibrated: 7/14/2010

Measurement SW: DASY4, V4.7 Build 80

Postprocessing SW: SEMCAD, V1.8 Build 186

Temperature:

Room T = $21.8 \pm 1 \text{ deg C}$, Liquid T = $22.0 \pm 1 \text{ deg C}$

835MHz/Area Scan (51x121x1): Measurement grid: $dx=15\text{mm}$, $dy=15\text{mm}$

Maximum value of SAR (interpolated) = 1.05 mW/g

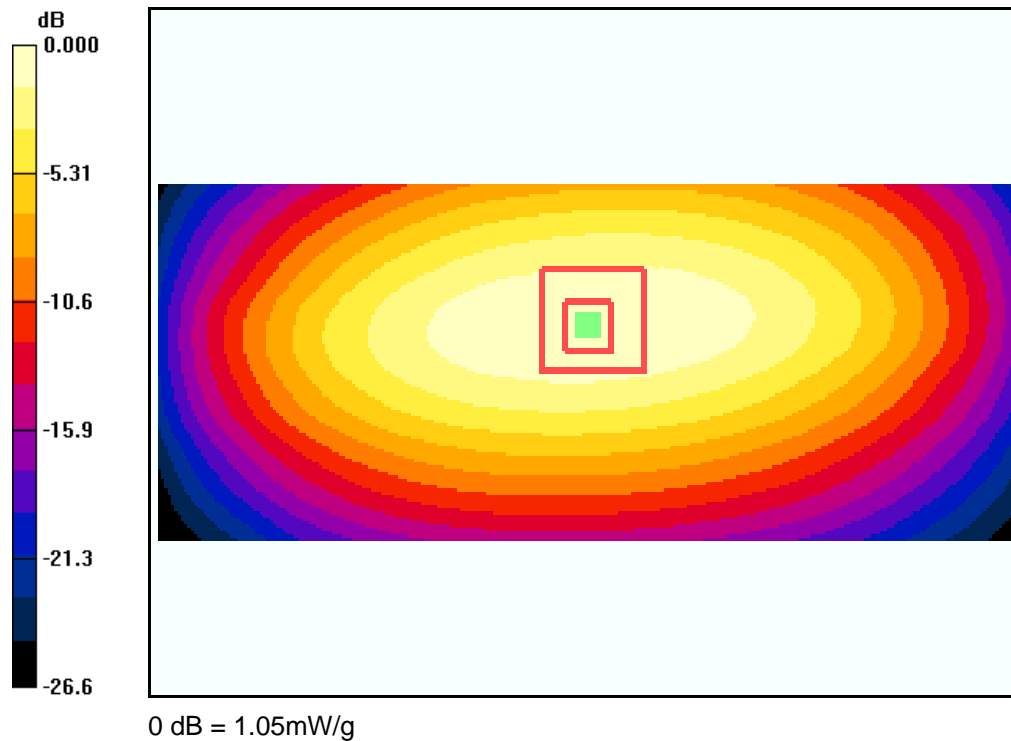
835MHz/Zoom Scan (7x7x7)/Cube 0: Measurement grid: $dx=5\text{mm}$, $dy=5\text{mm}$, $dz=5\text{mm}$

Reference Value = 32.4 V/m; Power Drift = -0.011 dB

Peak SAR (extrapolated) = 1.41 W/kg

SAR(1 g) = 0.970 mW/g; SAR(10 g) = 0.641 mW/g

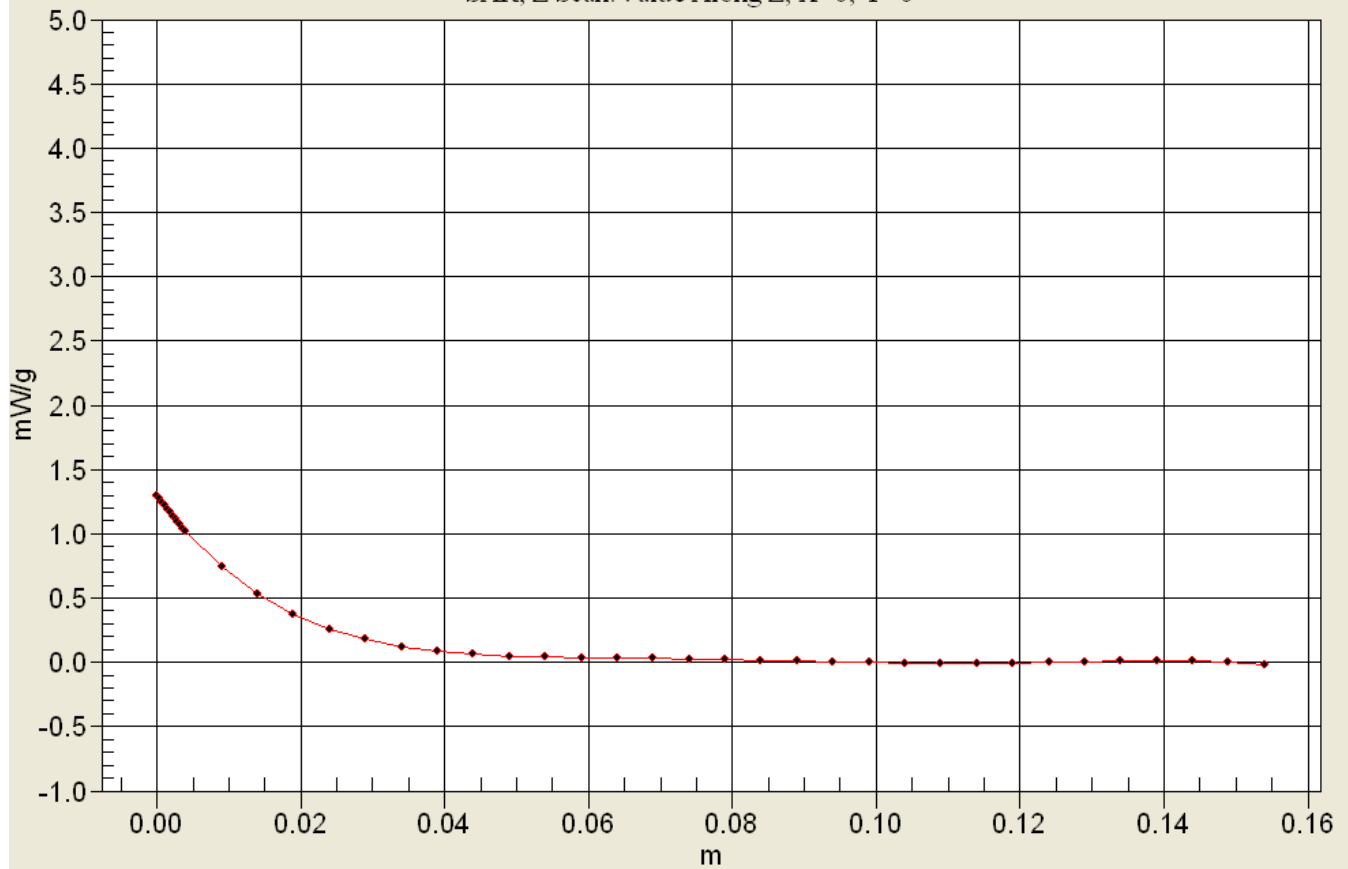
Maximum value of SAR (measured) = 1.05 mW/g





Applicant:	Kyocera
FCC ID:	OVFS13503CB
Report #:	CT-S1350-9A-0411-R0

Interpolated SAR(x,y,z,f0)
SAR; Z Scan: Value Along Z, X=0, Y=0



Applicant:	Kyocera
FCC ID:	OVFS13503CB
Report #:	CT-S1350-9A-0411-R0

Test Laboratory: Comptest/Kyocera

Date: 04/20/2011

1800MHz Validation (in Muscle), Probe #3078, DAE #602, Dipole #220

Communication System: CW, Frequency: 1800 MHz, Duty Cycle: 1:1

Medium: M1800, Medium parameters used: $f = 1800$ MHz; $\sigma = 1.53$ mho/m; $\epsilon_r = 50.9$; $\rho = 1000$ kg/m³

Phantom: SAM 12, Phantom section: Flat Section

DASY4 Configuration:

Probe: ES3DV3 - SN3078, ConvF(4.73, 4.73, 4.73), Calibrated: 7/14/2010

Sensor-Surface: 4mm (Mechanical Surface Detection),

Electronics: DAE4 Sn602, Calibrated: 7/14/2010

Measurement SW: DASY4, V4.7 Build 80

Postprocessing SW: SEMCAD, V1.8 Build 186

Temperature:

Room T = 21.8 +/- 1 deg C, Liquid T = 22.0 +/- 1 deg C

1800Mhz/Area Scan (61x61x1): Measurement grid: dx=15mm, dy=15mm

Maximum value of SAR (interpolated) = 4.92 mW/g

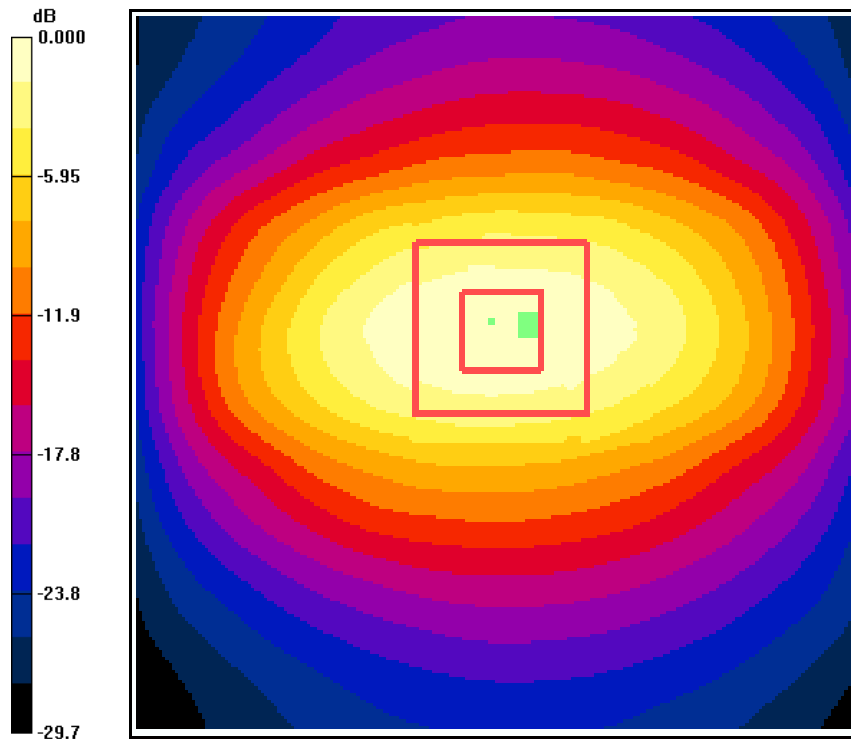
1800Mhz/Zoom Scan (7x7x7)/Cube 0: Measurement grid: dx=5mm, dy=5mm, dz=5mm

Reference Value = 50.9 V/m; Power Drift = -0.001 dB

Peak SAR (extrapolated) = 7.27 W/kg

SAR(1 g) = 4.03 mW/g; SAR(10 g) = 2.1 mW/g

Maximum value of SAR (measured) = 4.54 mW/g

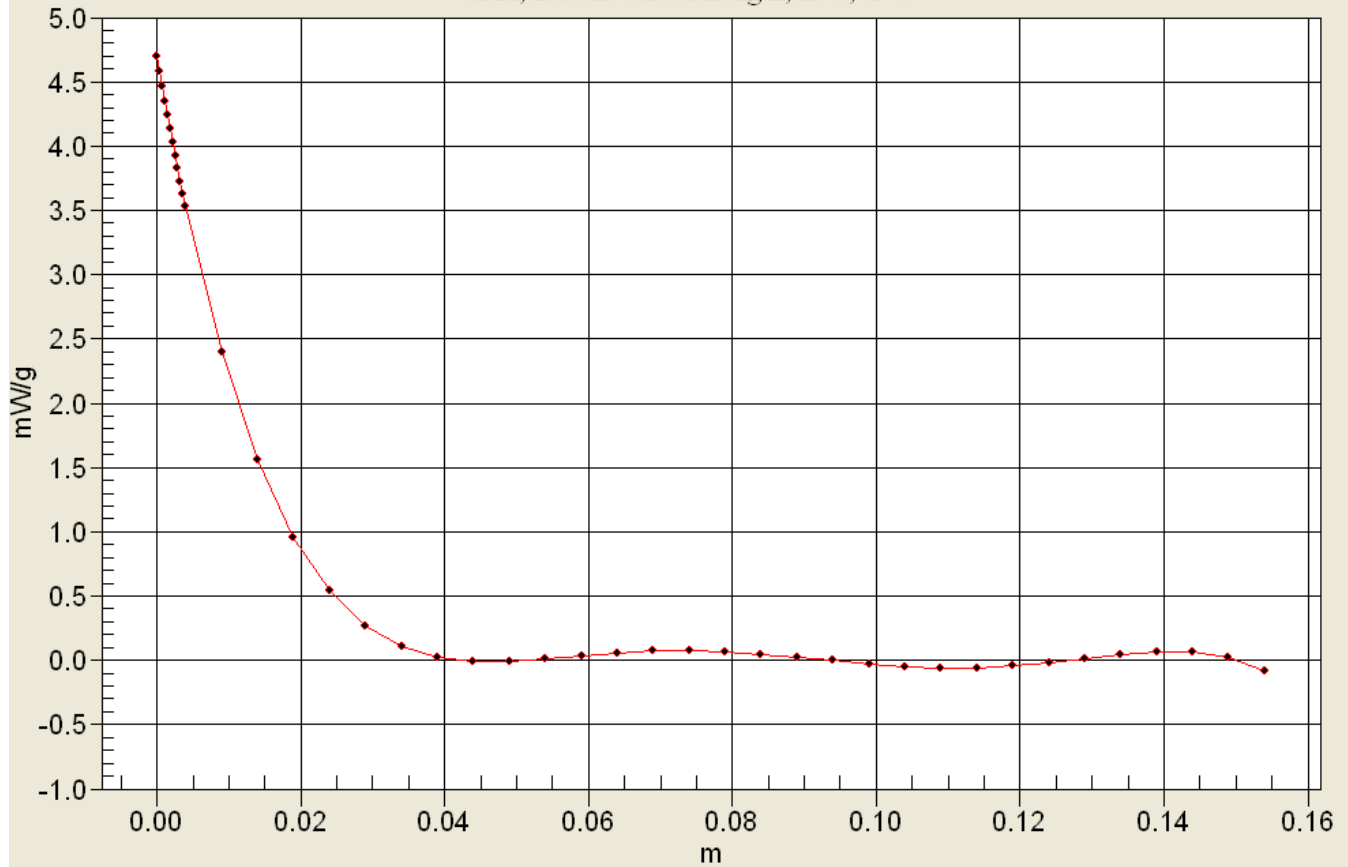


0 dB = 4.54mW/g



Applicant:	Kyocera
FCC ID:	OVFS13503CB
Report #:	CT-S1350-9A-0411-R0

Interpolated SAR(x,y,z,f0)
SAR; Z Scan: Value Along Z, X=0, Y=0



Applicant:	Kyocera
FCC ID:	OVFS13503CB
Report #:	CT-S1350-9A-0411-R0

Test Laboratory: Comptest/Kyocera

Date: 04/13/2011

1900MHz Validation (in Muscle), Probe #3078, DAE #602, Dipole #5d016

Communication System: CW, Frequency: 1900 MHz, Duty Cycle: 1:1

Medium: M1900, Medium parameters used (interpolated): $f = 1900$ MHz; $\sigma = 1.58$ mho/m; $\epsilon_r = 51$; $\rho = 1000$ kg/m³

Phantom: SAM 12, Phantom section: Flat Section

DASY4 Configuration:

Probe: ES3DV3 - SN3078, ConvF(4.5, 4.5, 4.5), Calibrated: 7/14/2010

Sensor-Surface: 4mm (Mechanical Surface Detection),

Electronics: DAE4 Sn602, Calibrated: 7/14/2010

Measurement SW: DASY4, V4.7 Build 80

Postprocessing SW: SEMCAD, V1.8 Build 186

Temperature:

Room T = 21.8 +/- 1 deg C, Liquid T = 22.0 +/- 1 deg C

1900MHz Validation @20dBm/Area Scan (61x71x1): Measurement grid: dx=15mm, dy=15mm

Maximum value of SAR (interpolated) = 4.90 mW/g

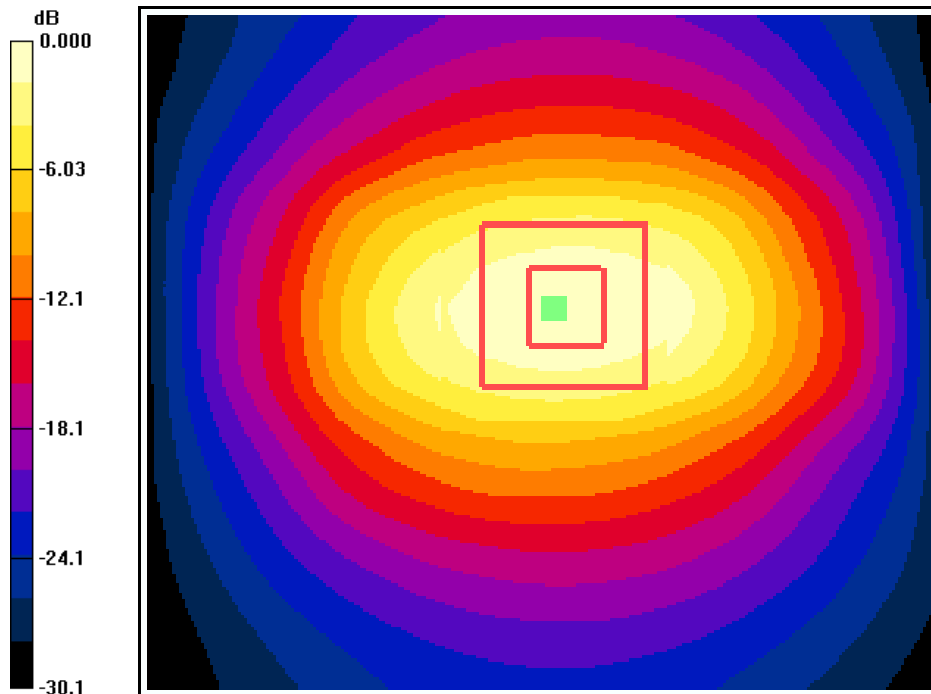
1900MHz Validation @20dBm/Zoom Scan (7x7x7)/Cube 0: Measurement grid: dx=5mm, dy=5mm, dz=5mm

Reference Value = 50.6 V/m; Power Drift = -0.350 dB

Peak SAR (extrapolated) = 6.53 W/kg

SAR(1 g) = 3.86 mW/g; SAR(10 g) = 2.07 mW/g

Maximum value of SAR (measured) = 4.36 mW/g



0 dB = 4.36mW/g



Applicant:	Kyocera
FCC ID:	OVFS13503CB
Report #:	CT-S1350-9A-0411-R0

Interpolated SAR(x,y,z,f0)
SAR; Z Scan: Value Along Z, X=0, Y=0

