

Appendix A: Validation Test Plots

Test Laboratory: Kyocera Wireless Corp.

1900MHz Validation @ 20.00dBm, Probe #3036, DAE #493 and Dipole #5d005

Communication System: CW 1900, Frequency: 1900 MHz, Duty Cycle: 1:1
Medium: HSL1800,Medium parameters used: $f = 1900$ MHz; $\sigma = 1.39$ mho/m; $\epsilon_r = 41.6$; $\rho = 1000$ kg/m³
Phantom: SAM 12,Phantom section: Flat Section

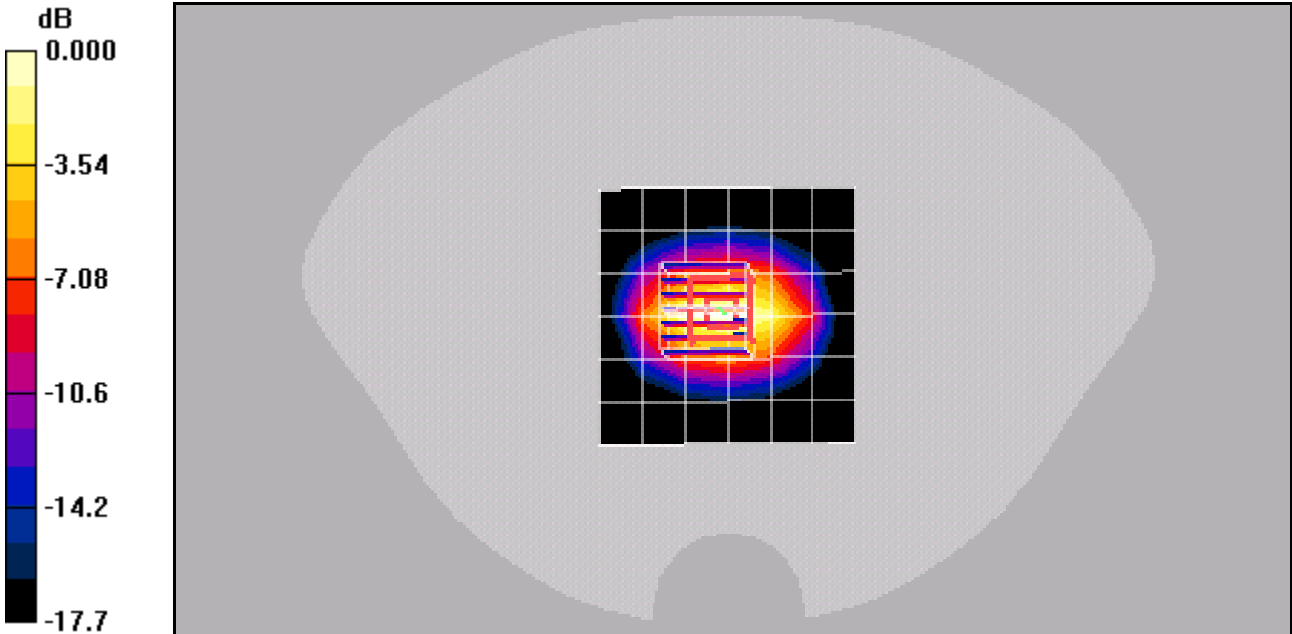
DASY4 Configuration:
Probe: ES3DV2 - SN3036, ConvF(4.64, 4.64, 4.64), Calibrated: 10/25/2005
Sensor-Surface: 4mm (Mechanical Surface Detection),
Electronics: DAE3 Sn493,Calibrated: 11/14/2005
Measurement SW: DASY4, V4.6 Build 23
Postprocessing SW: SEMCAD, V1.8 Build 160

Temperature:
Room T = 21.8 +/- 1 deg C, Liquid T = 22.0 +/- 1 deg C

1900Mhz/Zoom Scan (7x7x7)/Cube 0: Measurement grid: dx=5mm, dy=5mm, dz=5mm

Reference Value = 59.7 V/m; Power Drift = -0.004 dB
Peak SAR (extrapolated) = 7.35 W/kg
SAR(1 g) = 4.15 mW/g; SAR(10 g) = 2.19 mW/g

Maximum value of SAR (measured) = 4.70 mW/g



0 dB = 4.70mW/g

Test Laboratory: Kyocera Wireless Corp.

1900MHz Validation @ 20.00dBm, Probe #3036, DAE #493 and Dipole #5d005

Communication System: CW 1900, Frequency: 1900 MHz, Duty Cycle: 1:1

Medium: HSL1800,Medium parameters used: $f = 1900$ MHz; $\sigma = 1.39$ mho/m; $\epsilon_r = 41.4$; $\rho = 1000$ kg/m³

Phantom: SAM 12,Phantom section: Flat Section

DASY4 Configuration:

Probe: ES3DV2 - SN3036, ConvF(4.64, 4.64, 4.64), Calibrated: 10/25/2005

Sensor-Surface: 4mm (Mechanical Surface Detection),

Electronics: DAE3 Sn493,Calibrated: 11/14/2005

Measurement SW: DASY4, V4.6 Build 23

Postprocessing SW: SEMCAD, V1.8 Build 160

Temperature:

Room T = 21.8 +/- 1 deg C, Liquid T = 22.0 +/- 1 deg C

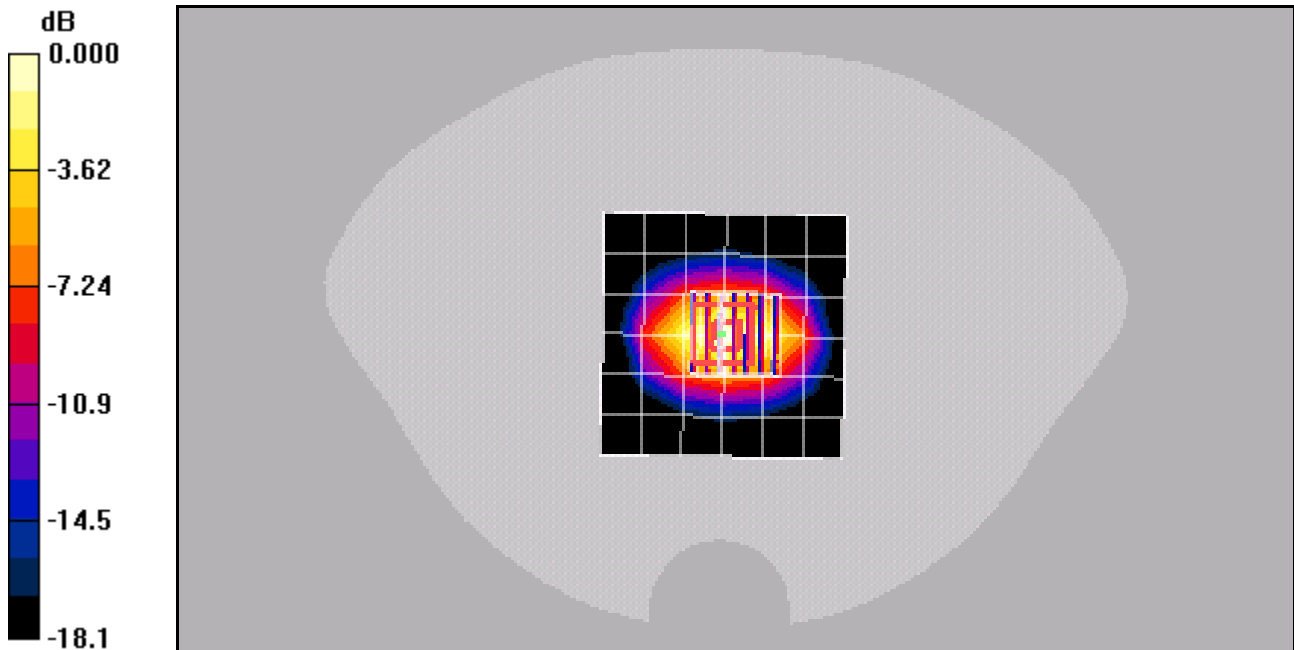
1900Mhz/Zoom Scan (7x7x7)/Cube 0: Measurement grid: dx=5mm, dy=5mm, dz=5mm

Reference Value = 60.2 V/m; Power Drift = -0.051 dB

Peak SAR (extrapolated) = 7.46 W/kg

SAR(1 g) = 4.18 mW/g; SAR(10 g) = 2.2 mW/g

Maximum value of SAR (measured) = 4.79 mW/g



0 dB = 4.79mW/g