

Test Laboratory: Compliance Certification Services

1_HAC_H-Device PCS band (Backlight on - Keypad open)

DUT: Kyocera; Type: KX5-5C1; Serial: 20-M7405-01

Communication System: CDMA PCS band; Frequency: 1851.25 MHz; Duty Cycle: 1:1
 Medium parameters used: $\sigma = 0$ mho/m, $\epsilon_r = 1$; $\rho = 1$ kg/m³
 Phantom section: H Device Section
 Measurement Standard: DAS4 (High Precision Assessment)

DASY4 Configuration:

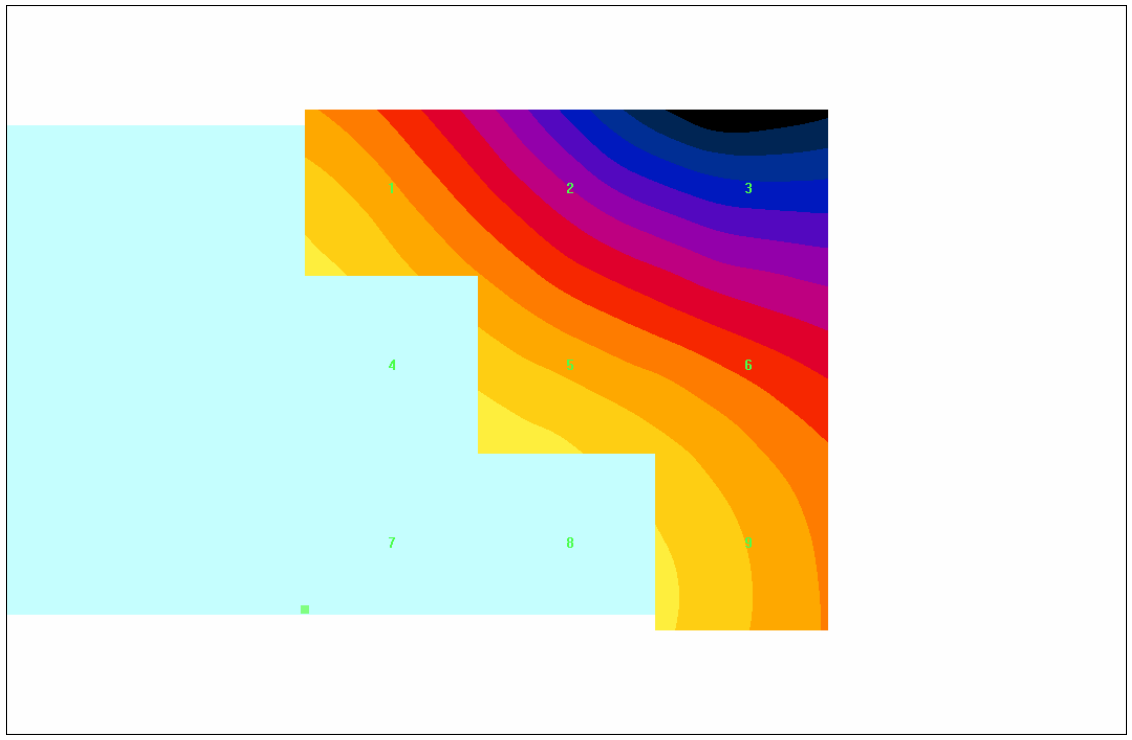
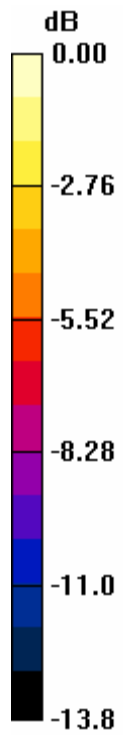
- Probe: H3DV6 - SN6157; ; Calibrated: 3/11/2005
- Sensor-Surface: (Fix Surface)
- Electronics: DAE3 Sn500; Calibrated: 2/7/2005
- Phantom: HAC Test Arch; Type: SD HAC P01 BA; Serial: 1011
- Measurement SW: DAS4, V4.5 Build 19; Postprocessing SW: SEMCAD, V1.8 Build 146

H Scan - L-ch/Hearing Aid Compatibility Test (101x101x1): Measurement grid: dx=5mm, dy=5mm
 Maximum value of Total field (slot averaged) = 0.111 A/m

Hearing Aid Near-Field Category: M4 (AWF 0 dB)

H in A/m (Time averaged)			H in A/m (Slot averaged)		
Grid 1	Grid 2	Grid 3	Grid 1	Grid 2	Grid 3
0.105	0.083	0.062	0.105	0.083	0.062
Grid 4	Grid 5	Grid 6	Grid 4	Grid 5	Grid 6
0.126	0.111	0.095	0.126	0.111	0.095
Grid 7	Grid 8	Grid 9	Grid 7	Grid 8	Grid 9
0.139	0.127	0.105	0.139	0.127	0.105

Category	AWF (dB)	Limits for E-Field Emissions (V/m)	Limits for H-Field Emissions (A/m)
M1	0	199.5 - 354.8	0.6 - 1.07
	-5	149.6 - 266.1	0.45 - 0.8
M2	0	112.2 - 199.5	0.34 - 0.6
	-5	84.1 - 149.6	0.25 - 0.45
M3	0	63.1 - 112.2	0.19 - 0.34
	-5	47.3 - 84.1	0.15 - 0.25
M4	0	<63.1	<0.19
	-5	<47.3	<0.15



0 dB = 0.139A/m

Test Laboratory: Compliance Certification Services

1_HAC_H-Device PCS band (Backlight on - Keypad open)

DUT: Kyocera; Type: KX5-5C1; Serial: 20-M7405-01

Communication System: CDMA PCS band; Frequency: 1880 MHz; Duty Cycle: 1:1

Medium parameters used: $\sigma = 0$ mho/m, $\epsilon_r = 1$; $\rho = 1$ kg/m³

Phantom section: H Device Section

Measurement Standard: DAS4 (High Precision Assessment)

DASY4 Configuration:

- Probe: H3DV6 - SN6157; ; Calibrated: 3/11/2005
- Sensor-Surface: (Fix Surface)
- Electronics: DAE3 Sn500; Calibrated: 2/7/2005
- Phantom: HAC Test Arch; Type: SD HAC P01 BA; Serial: 1011
- Measurement SW: DAS4, V4.5 Build 19; Postprocessing SW: SEMCAD, V1.8 Build 146

H Scan - M-ch/Hearing Aid Compatibility Test (101x101x1): Measurement grid: dx=5mm, dy=5mm

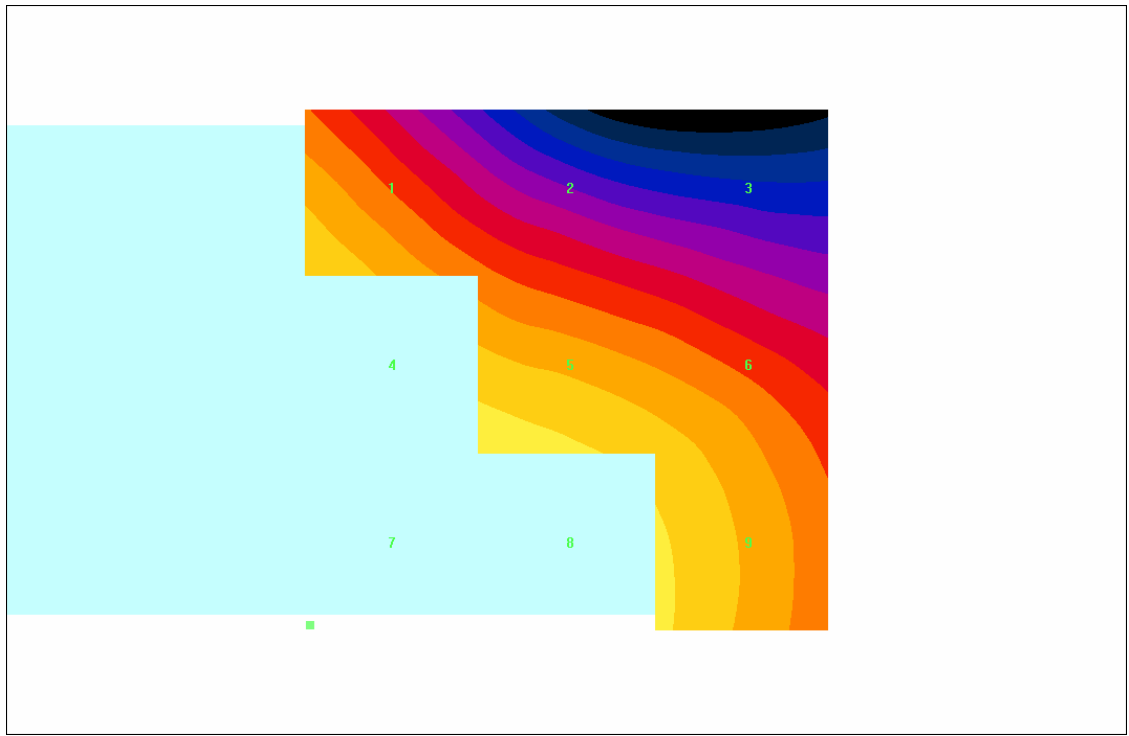
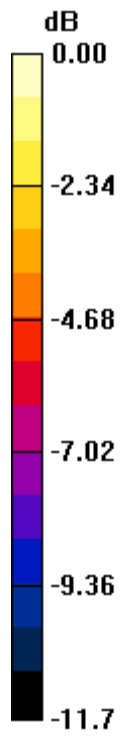
Maximum value of Total field (slot averaged) = 0.122 A/m

Hearing Aid Near-Field Category: M4 (AWF 0 dB)

H in A/m (Time averaged) H in A/m (Slot averaged)

Grid 1 0.113	Grid 2 0.091	Grid 3 0.076	Grid 1 0.113	Grid 2 0.091	Grid 3 0.076
Grid 4 0.134	Grid 5 0.122	Grid 6 0.110	Grid 4 0.134	Grid 5 0.122	Grid 6 0.110
Grid 7 0.150	Grid 8 0.138	Grid 9 0.117	Grid 7 0.150	Grid 8 0.138	Grid 9 0.117

Category	AWF (dB)	Limits for E-Field Emissions (V/m)	Limits for H-Field Emissions (A/m)
M1	0	199.5 - 354.8	0.6 - 1.07
	-5	149.6 - 266.1	0.45 - 0.8
M2	0	112.2 - 199.5	0.34 - 0.6
	-5	84.1 - 149.6	0.25 - 0.45
M3	0	63.1 - 112.2	0.19 - 0.34
	-5	47.3 - 84.1	0.15 - 0.25
M4	0	<63.1	<0.19
	-5	<47.3	<0.15



0 dB = 0.150A/m

Test Laboratory: Compliance Certification Services

1_HAC_H-Device PCS band (Backlight on - Keypad open)

DUT: Kyocera; Type: KX5-5C1; Serial: 20-M7405-01

Communication System: CDMA PCS band; Frequency: 1908.75 MHz; Duty Cycle: 1:1
 Medium parameters used: $\sigma = 0$ mho/m, $\epsilon_r = 1$; $\rho = 1$ kg/m³
 Phantom section: H Device Section
 Measurement Standard: DAS4 (High Precision Assessment)

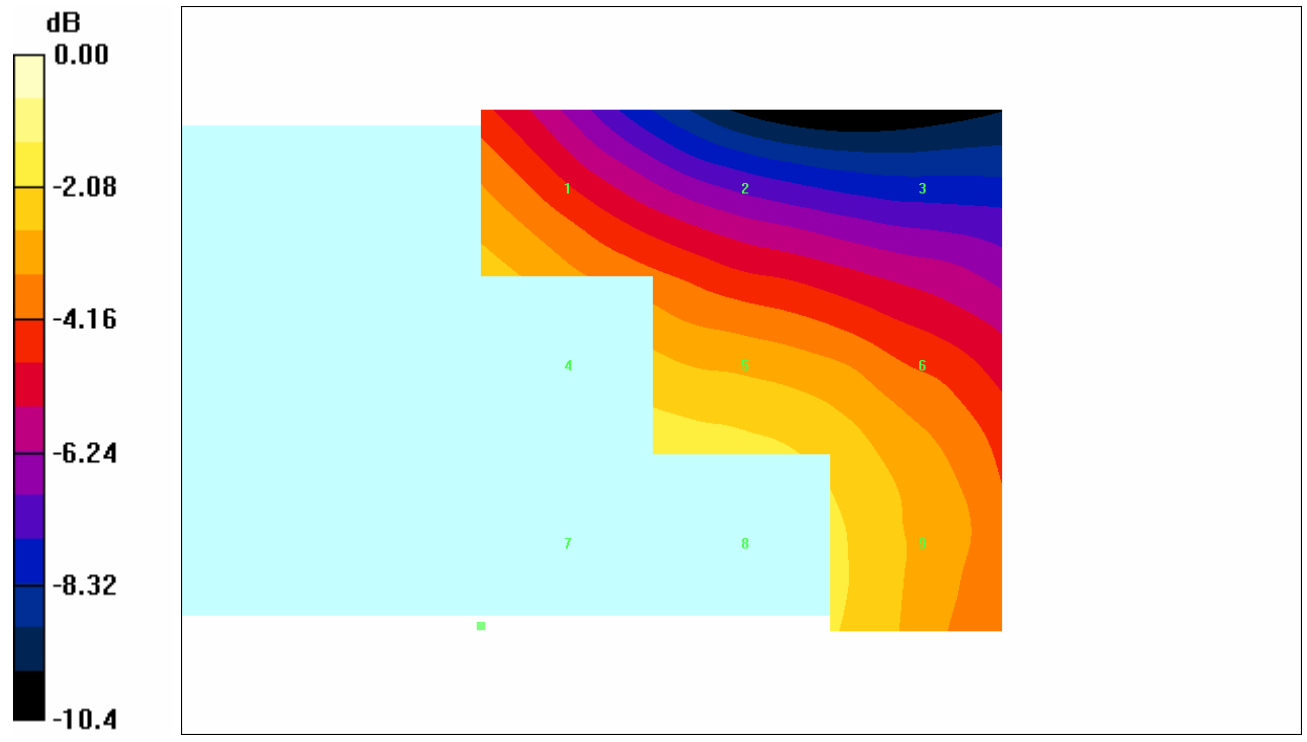
DASY4 Configuration:

- Probe: H3DV6 - SN6157; ; Calibrated: 3/11/2005
- Sensor-Surface: (Fix Surface)
- Electronics: DAE3 Sn500; Calibrated: 2/7/2005
- Phantom: HAC Test Arch; Type: SD HAC P01 BA; Serial: 1011
- Measurement SW: DAS4, V4.5 Build 19; Postprocessing SW: SEMCAD, V1.8 Build 146

H Scan - H-ch/Hearing Aid Compatibility Test (101x101x1): Measurement grid: dx=5mm, dy=5mm
 Maximum value of Total field (slot averaged) = 0.112 A/m
Hearing Aid Near-Field Category: M4 (AWF 0 dB)

H in A/m (Time averaged)			H in A/m (Slot averaged)		
Grid 1	Grid 2	Grid 3	Grid 1	Grid 2	Grid 3
0.102	0.085	0.074	0.102	0.085	0.074
Grid 4	Grid 5	Grid 6	Grid 4	Grid 5	Grid 6
0.120	0.112	0.104	0.120	0.112	0.104
Grid 7	Grid 8	Grid 9	Grid 7	Grid 8	Grid 9
0.135	0.126	0.109	0.135	0.126	0.109

Category	AWF (dB)	Limits for E-Field Emissions (V/m)	Limits for H-Field Emissions (A/m)
M1	0	199.5 - 354.8	0.6 - 1.07
	-5	149.6 - 266.1	0.45 - 0.8
M2	0	112.2 - 199.5	0.34 - 0.6
	-5	84.1 - 149.6	0.25 - 0.45
M3	0	63.1 - 112.2	0.19 - 0.34
	-5	47.3 - 84.1	0.15 - 0.25
M4	0	<63.1	<0.19
	-5	<47.3	<0.15



0 dB = 0.135A/m

Test Laboratory: Compliance Certification Services

2_HAC_H-Device PCS band (Backlight off - Keypad open)

DUT: Kyocera; Type: KX5-5C1; Serial: 20-M7405-01

Communication System: CDMA PCS band; Frequency: 1851.25 MHz; Duty Cycle: 1:1
 Medium parameters used: $\sigma = 0$ mho/m, $\epsilon_r = 1$; $\rho = 1$ kg/m³
 Phantom section: H Device Section
 Measurement Standard: DAS4 (High Precision Assessment)

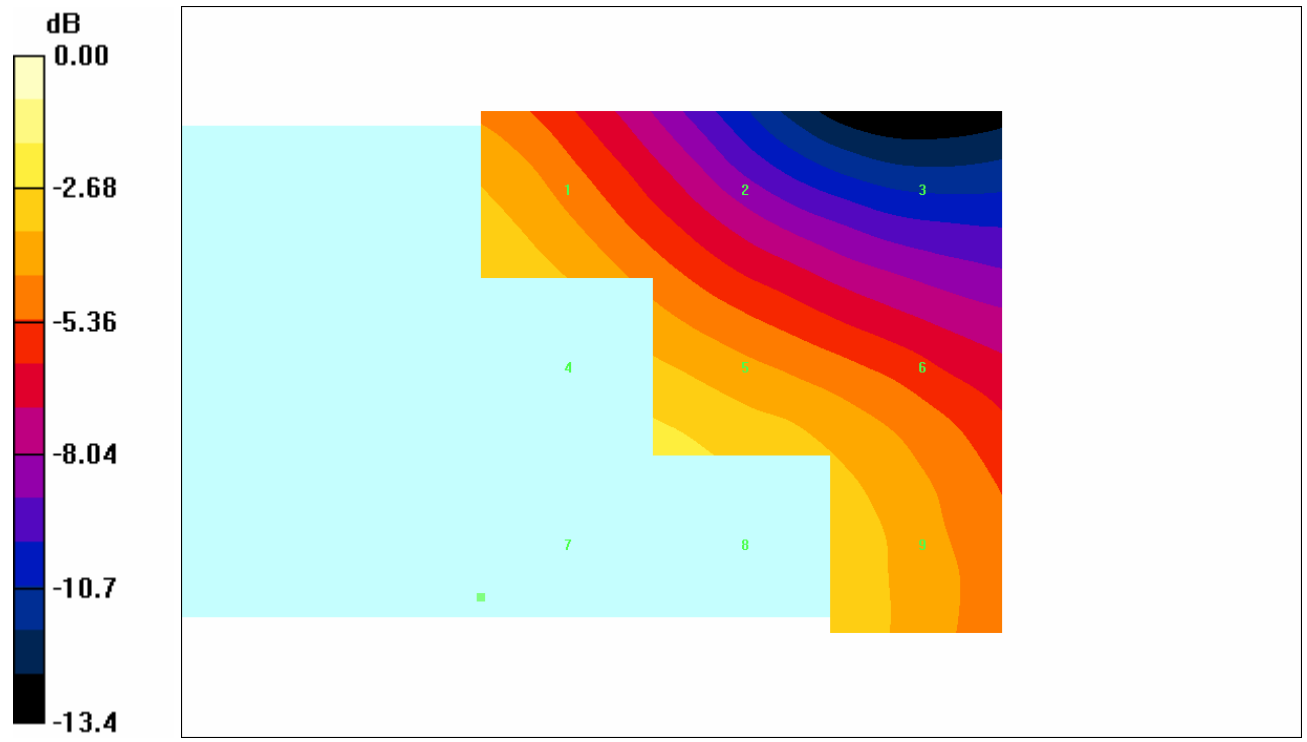
DASY4 Configuration:

- Probe: H3DV6 - SN6157; ; Calibrated: 3/11/2005
- Sensor-Surface: (Fix Surface)
- Electronics: DAE3 Sn500; Calibrated: 2/7/2005
- Phantom: HAC Test Arch; Type: SD HAC P01 BA; Serial: 1011
- Measurement SW: DAS4, V4.5 Build 19; Postprocessing SW: SEMCAD, V1.8 Build 146

H Scan - L-ch/Hearing Aid Compatibility Test (101x101x1): Measurement grid: dx=5mm, dy=5mm
 Maximum value of Total field (slot averaged) = 0.110 A/m
Hearing Aid Near-Field Category: M4 (AWF 0 dB)

H in A/m (Time averaged)			H in A/m (Slot averaged)		
Grid 1	Grid 2	Grid 3	Grid 1	Grid 2	Grid 3
0.104	0.082	0.062	0.104	0.082	0.062
Grid 4	Grid 5	Grid 6	Grid 4	Grid 5	Grid 6
0.126	0.110	0.095	0.126	0.110	0.095
Grid 7	Grid 8	Grid 9	Grid 7	Grid 8	Grid 9
0.143	0.128	0.104	0.143	0.128	0.104

Category	AWF (dB)	Limits for E-Field Emissions (V/m)	Limits for H-Field Emissions (A/m)
M1	0	199.5 - 354.8	0.6 - 1.07
	-5	149.6 - 266.1	0.45 - 0.8
M2	0	112.2 - 199.5	0.34 - 0.6
	-5	84.1 - 149.6	0.25 - 0.45
M3	0	63.1 - 112.2	0.19 - 0.34
	-5	47.3 - 84.1	0.15 - 0.25
M4	0	<63.1	<0.19
	-5	<47.3	<0.15



0 dB = 0.143A/m

Test Laboratory: Compliance Certification Services

2_HAC_H-Device PCS band (Backlight off - Keypad open)

DUT: Kyocera; Type: KX5-5C1; Serial: 20-M7405-01

Communication System: CDMA PCS band; Frequency: 1880 MHz; Duty Cycle: 1:1
 Medium parameters used: $\sigma = 0$ mho/m, $\epsilon_r = 1$; $\rho = 1$ kg/m³
 Phantom section: H Device Section
 Measurement Standard: DAS4 (High Precision Assessment)

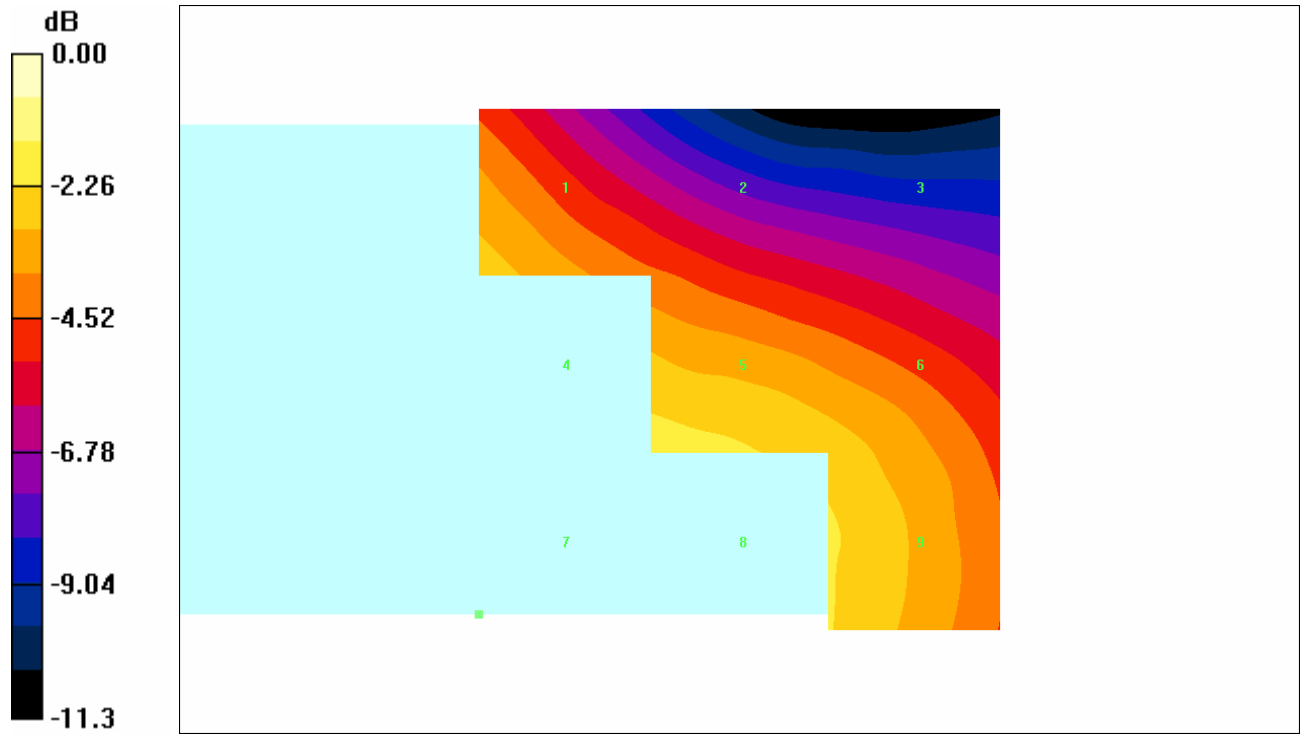
DASY4 Configuration:

- Probe: H3DV6 - SN6157; ; Calibrated: 3/11/2005
- Sensor-Surface: (Fix Surface)
- Electronics: DAE3 Sn500; Calibrated: 2/7/2005
- Phantom: HAC Test Arch; Type: SD HAC P01 BA; Serial: 1011
- Measurement SW: DAS4, V4.5 Build 19; Postprocessing SW: SEMCAD, V1.8 Build 146

H Scan - M-ch/Hearing Aid Compatibility Test (101x101x1): Measurement grid: dx=5mm, dy=5mm
 Maximum value of Total field (slot averaged) = 0.119 A/m
Hearing Aid Near-Field Category: M4 (AWF 0 dB)

H in A/m (Time averaged)			H in A/m (Slot averaged)		
Grid 1	Grid 2	Grid 3	Grid 1	Grid 2	Grid 3
0.108	0.089	0.075	0.108	0.089	0.075
Grid 4	Grid 5	Grid 6	Grid 4	Grid 5	Grid 6
0.129	0.119	0.108	0.129	0.119	0.108
Grid 7	Grid 8	Grid 9	Grid 7	Grid 8	Grid 9
0.146	0.133	0.114	0.146	0.133	0.114

Category	AWF (dB)	Limits for E-Field Emissions (V/m)	Limits for H-Field Emissions (A/m)
M1	0	199.5 - 354.8	0.6 - 1.07
	-5	149.6 - 266.1	0.45 - 0.8
M2	0	112.2 - 199.5	0.34 - 0.6
	-5	84.1 - 149.6	0.25 - 0.45
M3	0	63.1 - 112.2	0.19 - 0.34
	-5	47.3 - 84.1	0.15 - 0.25
M4	0	<63.1	<0.19
	-5	<47.3	<0.15



0 dB = 0.146A/m

Test Laboratory: Compliance Certification Services

2_HAC_H-Device PCS band (Backlight off - Keypad open)

DUT: Kyocera; Type: KX5-5C1; Serial: 20-M7405-01

Communication System: CDMA PCS band; Frequency: 1908.75 MHz; Duty Cycle: 1:1
 Medium parameters used: $\sigma = 0$ mho/m, $\epsilon_r = 1$; $\rho = 1$ kg/m³
 Phantom section: H Device Section
 Measurement Standard: DAS4 (High Precision Assessment)

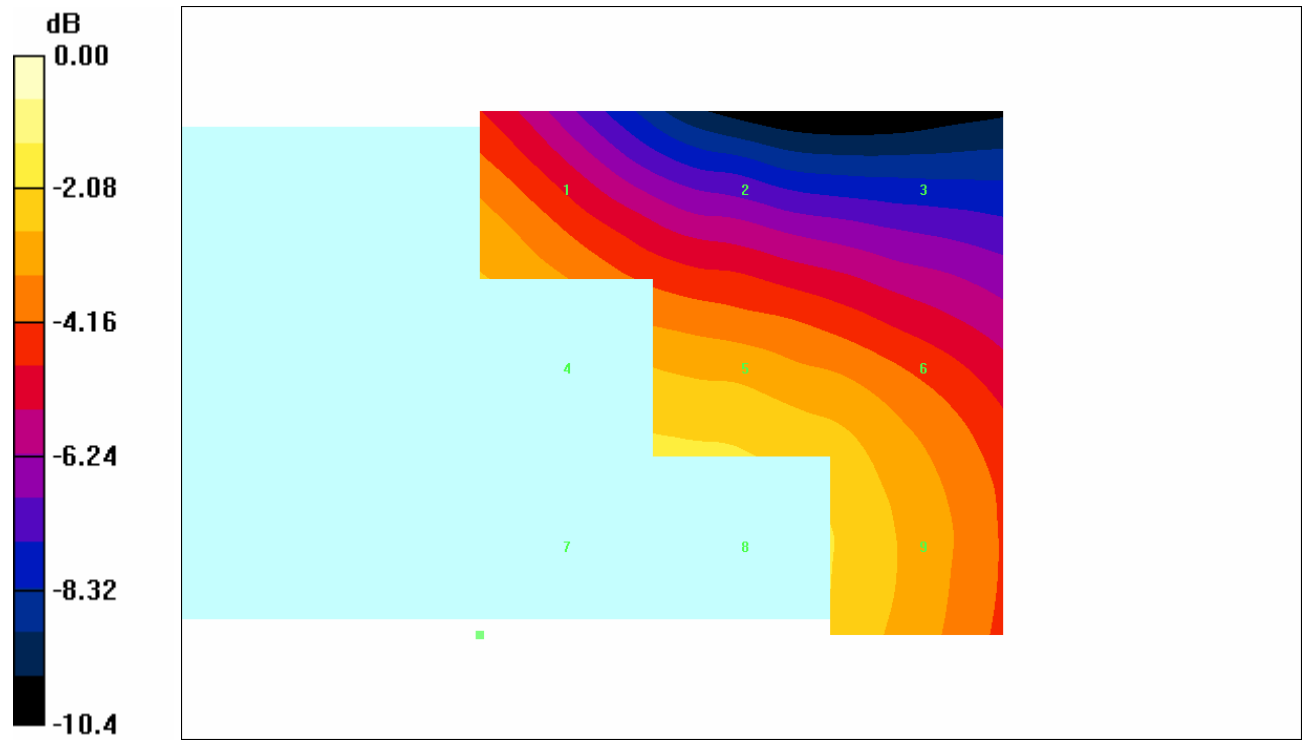
DASY4 Configuration:

- Probe: H3DV6 - SN6157; ; Calibrated: 3/11/2005
- Sensor-Surface: (Fix Surface)
- Electronics: DAE3 Sn500; Calibrated: 2/7/2005
- Phantom: HAC Test Arch; Type: SD HAC P01 BA; Serial: 1011
- Measurement SW: DAS4, V4.5 Build 19; Postprocessing SW: SEMCAD, V1.8 Build 146

H Scan - H-ch/Hearing Aid Compatibility Test (101x101x1): Measurement grid: dx=5mm, dy=5mm
 Maximum value of Total field (slot averaged) = 0.109 A/m
Hearing Aid Near-Field Category: M4 (AWF 0 dB)

H in A/m (Time averaged)			H in A/m (Slot averaged)		
Grid 1	Grid 2	Grid 3	Grid 1	Grid 2	Grid 3
0.099	0.082	0.073	0.099	0.082	0.073
Grid 4	Grid 5	Grid 6	Grid 4	Grid 5	Grid 6
0.118	0.109	0.102	0.118	0.109	0.102
Grid 7	Grid 8	Grid 9	Grid 7	Grid 8	Grid 9
0.135	0.123	0.107	0.135	0.123	0.107

Category	AWF (dB)	Limits for E-Field Emissions (V/m)	Limits for H-Field Emissions (A/m)
M1	0	199.5 - 354.8	0.6 - 1.07
	-5	149.6 - 266.1	0.45 - 0.8
M2	0	112.2 - 199.5	0.34 - 0.6
	-5	84.1 - 149.6	0.25 - 0.45
M3	0	63.1 - 112.2	0.19 - 0.34
	-5	47.3 - 84.1	0.15 - 0.25
M4	0	<63.1	<0.19
	-5	<47.3	<0.15



0 dB = 0.135A/m

Test Laboratory: Compliance Certification Services

1_HAC_H-Device PCS band (Backlight on - Keypad close)

DUT: Kyocera; Type: KX5-5C1; Serial: 20-M7405-01

Communication System: CDMA PCS band; Frequency: 1851.25 MHz; Duty Cycle: 1:1
 Medium parameters used: $\sigma = 0$ mho/m, $\epsilon_r = 1$; $\rho = 1$ kg/m³
 Phantom section: H Device Section
 Measurement Standard: DAS4 (High Precision Assessment)

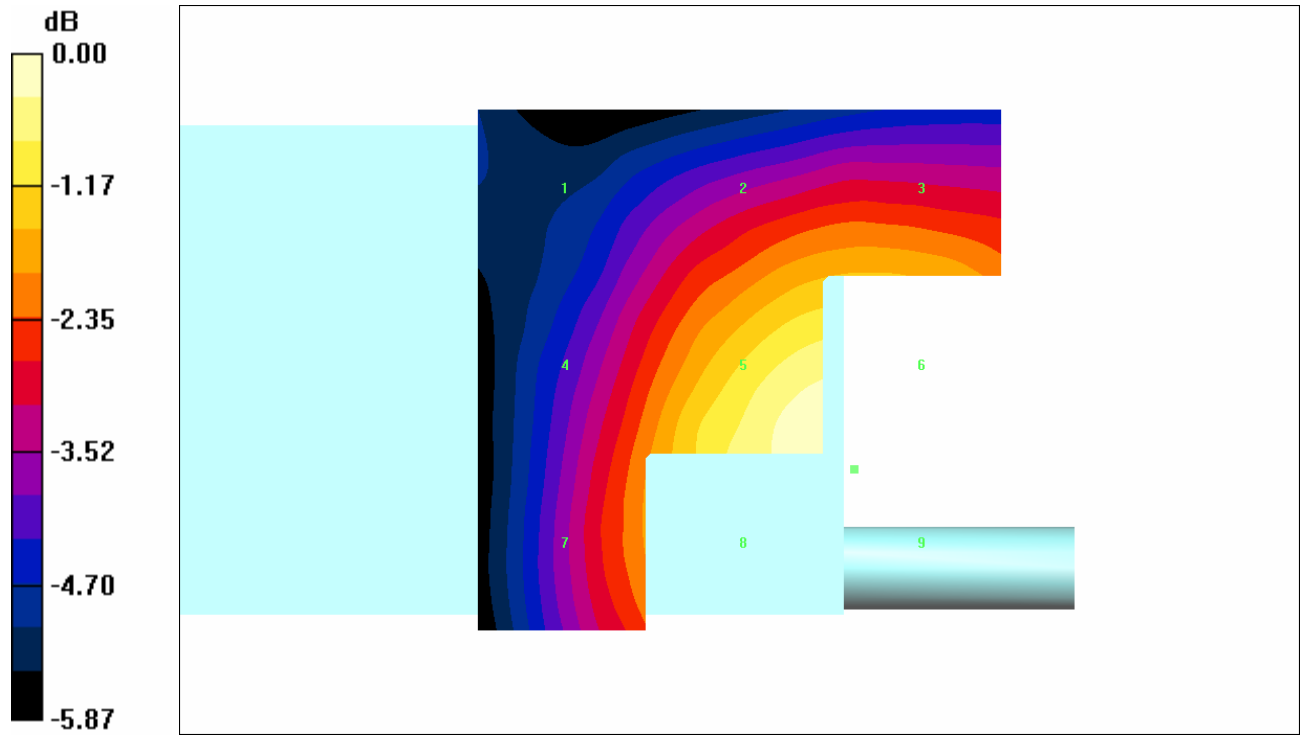
DASY4 Configuration:

- Probe: H3DV6 - SN6157; ; Calibrated: 3/11/2005
- Sensor-Surface: (Fix Surface)
- Electronics: DAE3 Sn500; Calibrated: 2/7/2005
- Phantom: HAC Test Arch; Type: SD HAC P01 BA; Serial: 1011
- Measurement SW: DAS4, V4.5 Build 19; Postprocessing SW: SEMCAD, V1.8 Build 146

H Scan - L-ch/Hearing Aid Compatibility Test (101x101x1): Measurement grid: dx=5mm, dy=5mm
 Maximum value of Total field (slot averaged) = 0.181 A/m
Hearing Aid Near-Field Category: M4 (AWF 0 dB)

H in A/m (Time averaged)			H in A/m (Slot averaged)		
Grid 1 0.123	Grid 2 0.152	Grid 3 0.154	Grid 1 0.123	Grid 2 0.152	Grid 3 0.154
Grid 4 0.145	Grid 5 0.181	Grid 6 0.183	Grid 4 0.145	Grid 5 0.181	Grid 6 0.183
Grid 7 0.147	Grid 8 0.181	Grid 9 0.183	Grid 7 0.147	Grid 8 0.181	Grid 9 0.183

Category	AWF (dB)	Limits for E-Field Emissions (V/m)	Limits for H-Field Emissions (A/m)
M1	0	199.5 - 354.8	0.6 - 1.07
	-5	149.6 - 266.1	0.45 - 0.8
M2	0	112.2 - 199.5	0.34 - 0.6
	-5	84.1 - 149.6	0.25 - 0.45
M3	0	63.1 - 112.2	0.19 - 0.34
	-5	47.3 - 84.1	0.15 - 0.25
M4	0	<63.1	<0.19
	-5	<47.3	<0.15



0 dB = 0.183A/m

Test Laboratory: Compliance Certification Services

1_HAC_H-Device PCS band (Backlight on - Keypad close)

DUT: Kyocera; Type: KX5-5C1; Serial: 20-M7405-01

Communication System: CDMA PCS band; Frequency: 1880 MHz; Duty Cycle: 1:1
 Medium parameters used: $\sigma = 0$ mho/m, $\epsilon_r = 1$; $\rho = 1$ kg/m³
 Phantom section: H Device Section
 Measurement Standard: DAS4 (High Precision Assessment)

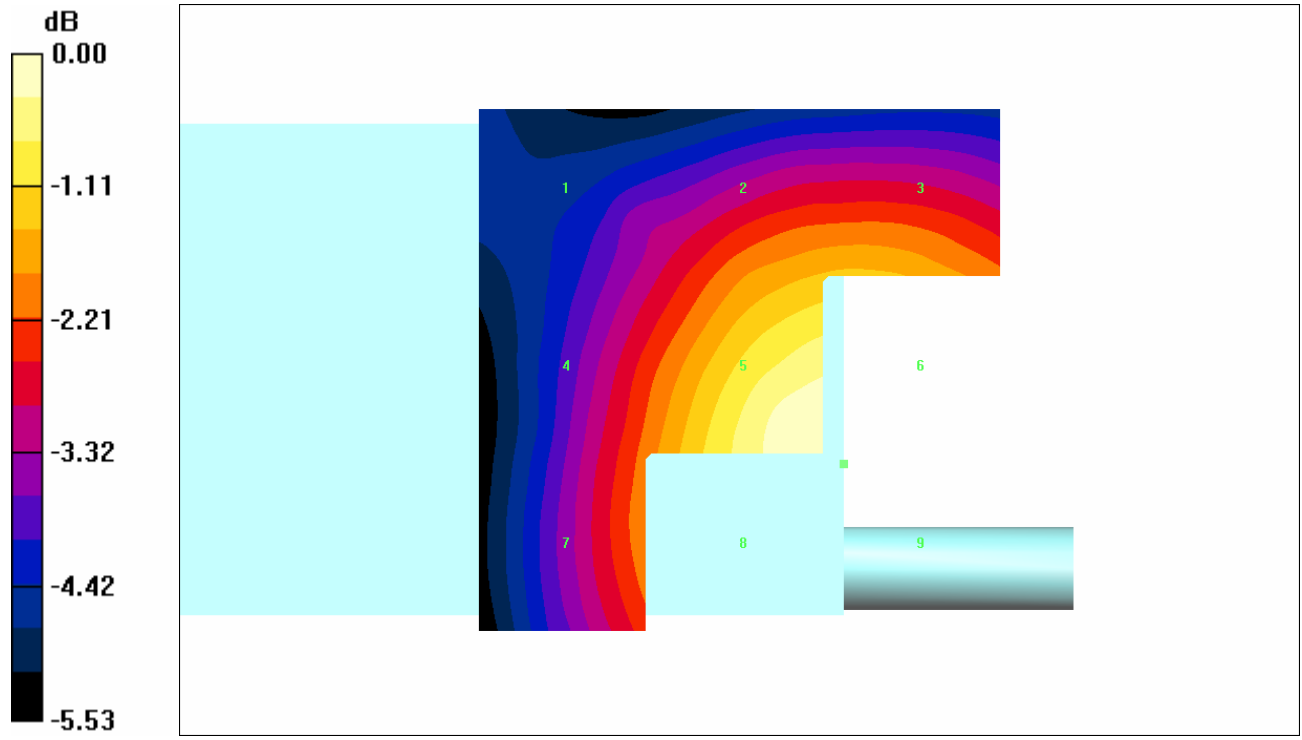
DASY4 Configuration:

- Probe: H3DV6 - SN6157; ; Calibrated: 3/11/2005
- Sensor-Surface: (Fix Surface)
- Electronics: DAE3 Sn500; Calibrated: 2/7/2005
- Phantom: HAC Test Arch; Type: SD HAC P01 BA; Serial: 1011
- Measurement SW: DAS4, V4.5 Build 19; Postprocessing SW: SEMCAD, V1.8 Build 146

H Scan - M-ch/Hearing Aid Compatibility Test (101x101x1): Measurement grid: dx=5mm, dy=5mm
 Maximum value of Total field (slot averaged) = 0.194 A/m
Hearing Aid Near-Field Category: M3 (AWF 0 dB)

H in A/m (Time averaged)			H in A/m (Slot averaged)		
Grid 1	Grid 2	Grid 3	Grid 1	Grid 2	Grid 3
0.135	0.165	0.166	0.135	0.165	0.166
Grid 4	Grid 5	Grid 6	Grid 4	Grid 5	Grid 6
0.153	0.194	0.194	0.153	0.194	0.194
Grid 7	Grid 8	Grid 9	Grid 7	Grid 8	Grid 9
0.156	0.194	0.194	0.156	0.194	0.194

Category	AWF (dB)	Limits for E-Field Emissions (V/m)	Limits for H-Field Emissions (A/m)
M1	0	199.5 - 354.8	0.6 - 1.07
	-5	149.6 - 266.1	0.45 - 0.8
M2	0	112.2 - 199.5	0.34 - 0.6
	-5	84.1 - 149.6	0.25 - 0.45
M3	0	63.1 - 112.2	0.19 - 0.34
	-5	47.3 - 84.1	0.15 - 0.25
M4	0	<63.1	<0.19
	-5	<47.3	<0.15



0 dB = 0.194A/m

Test Laboratory: Compliance Certification Services

1_HAC_H-Device PCS band (Backlight on - Keypad close)

DUT: Kyocera; Type: KX5-5C1; Serial: 20-M7405-01

Communication System: CDMA PCS band; Frequency: 1908.75 MHz; Duty Cycle: 1:1

Medium parameters used: $\sigma = 0$ mho/m, $\epsilon_r = 1$; $\rho = 1$ kg/m³

Phantom section: H Device Section

Measurement Standard: DAS4 (High Precision Assessment)

DASY4 Configuration:

- Probe: H3DV6 - SN6157; ; Calibrated: 3/11/2005
- Sensor-Surface: (Fix Surface)
- Electronics: DAE3 Sn500; Calibrated: 2/7/2005
- Phantom: HAC Test Arch; Type: SD HAC P01 BA; Serial: 1011
- Measurement SW: DAS4, V4.5 Build 19; Postprocessing SW: SEMCAD, V1.8 Build 146

H Scan - H-ch/Hearing Aid Compatibility Test (101x101x1): Measurement grid: dx=5mm, dy=5mm

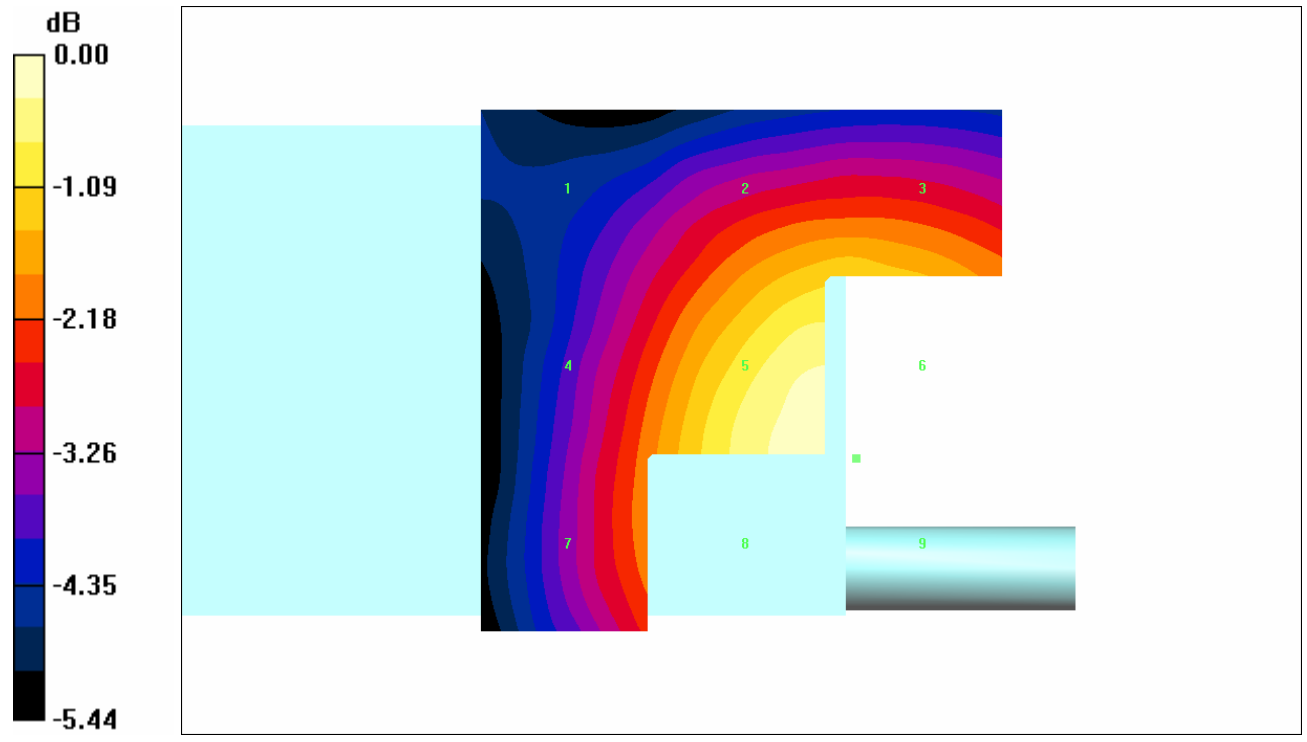
Maximum value of Total field (slot averaged) = 0.186 A/m

Hearing Aid Near-Field Category: M4 (AWF 0 dB)

H in A/m (Time averaged) H in A/m (Slot averaged)

Grid 1	Grid 2	Grid 3	Grid 1	Grid 2	Grid 3
0.133	0.163	0.164	0.133	0.163	0.164
Grid 4	Grid 5	Grid 6	Grid 4	Grid 5	Grid 6
0.149	0.186	0.187	0.149	0.186	0.187
Grid 7	Grid 8	Grid 9	Grid 7	Grid 8	Grid 9
0.151	0.186	0.187	0.151	0.186	0.187

Category	AWF (dB)	Limits for E-Field Emissions (V/m)	Limits for H-Field Emissions (A/m)
M1	0	199.5 - 354.8	0.6 - 1.07
	-5	149.6 - 266.1	0.45 - 0.8
M2	0	112.2 - 199.5	0.34 - 0.6
	-5	84.1 - 149.6	0.25 - 0.45
M3	0	63.1 - 112.2	0.19 - 0.34
	-5	47.3 - 84.1	0.15 - 0.25
M4	0	<63.1	<0.19
	-5	<47.3	<0.15



0 dB = 0.187A/m

Test Laboratory: Compliance Certification Services

2_HAC_H-Device PCS band (Backlight off - Keypad close)

DUT: Kyocera; Type: KX5-5C1; Serial: 20-M7405-01

Communication System: CDMA PCS band; Frequency: 1851.25 MHz; Duty Cycle: 1:1
 Medium parameters used: $\sigma = 0$ mho/m, $\epsilon_r = 1$; $\rho = 1$ kg/m³
 Phantom section: H Device Section
 Measurement Standard: DAS4 (High Precision Assessment)

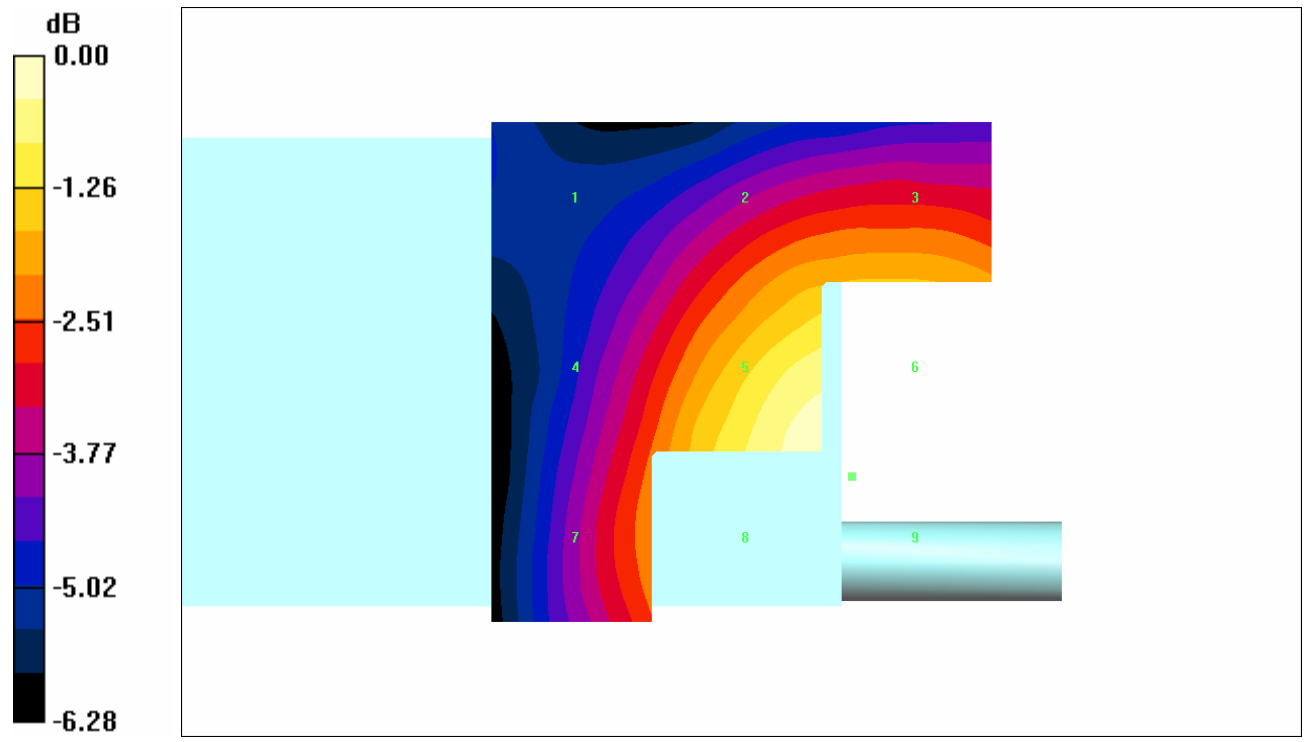
DASY4 Configuration:

- Probe: H3DV6 - SN6157; ; Calibrated: 3/11/2005
- Sensor-Surface: (Fix Surface)
- Electronics: DAE3 Sn500; Calibrated: 2/7/2005
- Phantom: HAC Test Arch; Type: SD HAC P01 BA; Serial: 1011
- Measurement SW: DAS4, V4.5 Build 19; Postprocessing SW: SEMCAD, V1.8 Build 146

H Scan - L-ch/Hearing Aid Compatibility Test (101x101x1): Measurement grid: dx=5mm, dy=5mm
 Maximum value of Total field (slot averaged) = 0.173 A/m
Hearing Aid Near-Field Category: M4 (AWF 0 dB)

H in A/m (Time averaged)			H in A/m (Slot averaged)		
Grid 1 0.111	Grid 2 0.144	Grid 3 0.145	Grid 1 0.111	Grid 2 0.144	Grid 3 0.145
Grid 4 0.132	Grid 5 0.173	Grid 6 0.174	Grid 4 0.132	Grid 5 0.173	Grid 6 0.174
Grid 7 0.137	Grid 8 0.174	Grid 9 0.175	Grid 7 0.137	Grid 8 0.174	Grid 9 0.175

Category	AWF (dB)	Limits for E-Field Emissions (V/m)	Limits for H-Field Emissions (A/m)
M1	0	199.5 - 354.8	0.6 - 1.07
	-5	149.6 - 266.1	0.45 - 0.8
M2	0	112.2 - 199.5	0.34 - 0.6
	-5	84.1 - 149.6	0.25 - 0.45
M3	0	63.1 - 112.2	0.19 - 0.34
	-5	47.3 - 84.1	0.15 - 0.25
M4	0	<63.1	<0.19
	-5	<47.3	<0.15



0 dB = 0.175A/m

Test Laboratory: Compliance Certification Services

2_HAC_H-Device PCS band (Backlight off - Keypad close)

DUT: Kyocera; Type: KX5-5C1; Serial: 20-M7405-01

Communication System: CDMA PCS band; Frequency: 1880 MHz; Duty Cycle: 1:1
 Medium parameters used: $\sigma = 0$ mho/m, $\epsilon_r = 1$; $\rho = 1$ kg/m³
 Phantom section: H Device Section
 Measurement Standard: DAS4 (High Precision Assessment)

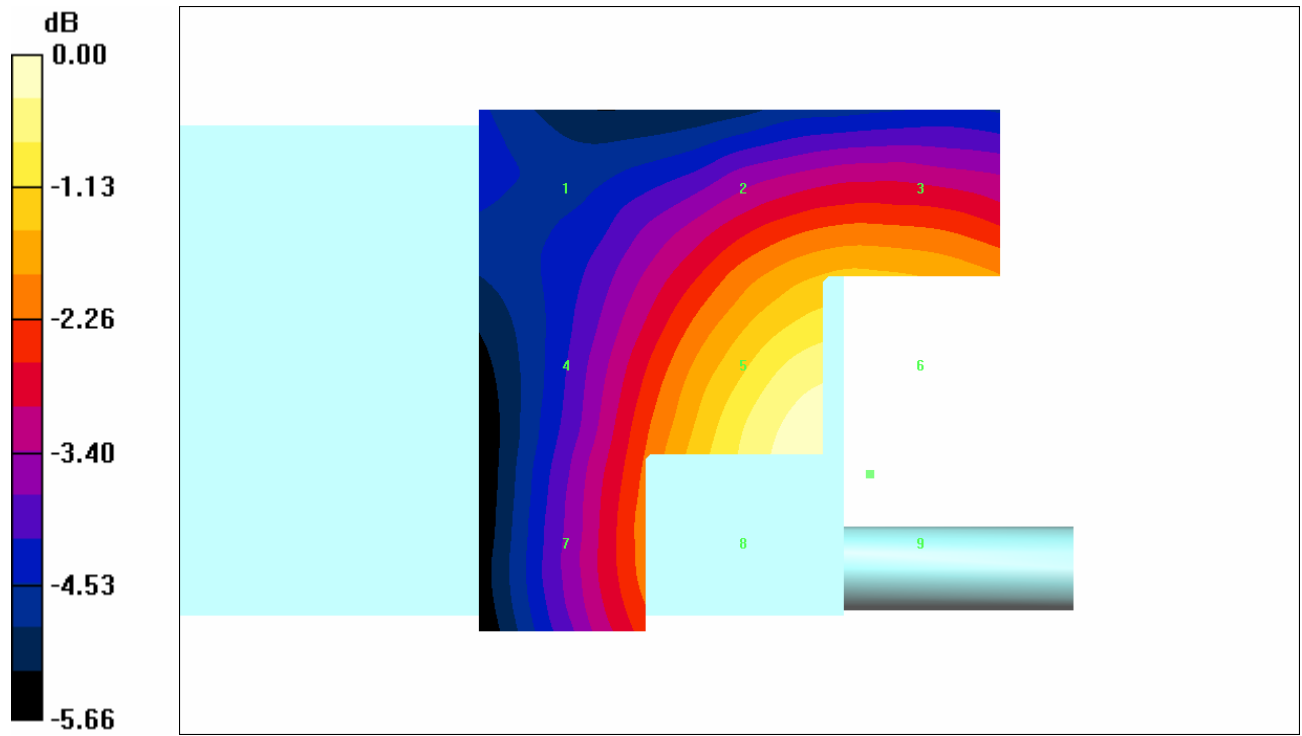
DASY4 Configuration:

- Probe: H3DV6 - SN6157; ; Calibrated: 3/11/2005
- Sensor-Surface: (Fix Surface)
- Electronics: DAE3 Sn500; Calibrated: 2/7/2005
- Phantom: HAC Test Arch; Type: SD HAC P01 BA; Serial: 1011
- Measurement SW: DAS4, V4.5 Build 19; Postprocessing SW: SEMCAD, V1.8 Build 146

H Scan - M-ch/Hearing Aid Compatibility Test (101x101x1): Measurement grid: dx=5mm, dy=5mm
 Maximum value of Total field (slot averaged) = 0.184 A/m
Hearing Aid Near-Field Category: M4 (AWF 0 dB)

H in A/m (Time averaged)			H in A/m (Slot averaged)		
Grid 1 0.127	Grid 2 0.157	Grid 3 0.159	Grid 1 0.127	Grid 2 0.157	Grid 3 0.159
Grid 4 0.144	Grid 5 0.184	Grid 6 0.185	Grid 4 0.144	Grid 5 0.184	Grid 6 0.185
Grid 7 0.147	Grid 8 0.185	Grid 9 0.186	Grid 7 0.147	Grid 8 0.185	Grid 9 0.186

Category	AWF (dB)	Limits for E-Field Emissions (V/m)	Limits for H-Field Emissions (A/m)
M1	0	199.5 - 354.8	0.6 - 1.07
	-5	149.6 - 266.1	0.45 - 0.8
M2	0	112.2 - 199.5	0.34 - 0.6
	-5	84.1 - 149.6	0.25 - 0.45
M3	0	63.1 - 112.2	0.19 - 0.34
	-5	47.3 - 84.1	0.15 - 0.25
M4	0	<63.1	<0.19
	-5	<47.3	<0.15



0 dB = 0.186A/m

Test Laboratory: Compliance Certification Services

2_HAC_H-Device PCS band (Backlight off - Keypad close)

DUT: Kyocera; Type: KX5-5C1; Serial: 20-M7405-01

Communication System: CDMA PCS band; Frequency: 1908.75 MHz; Duty Cycle: 1:1

Medium parameters used: $\sigma = 0$ mho/m, $\epsilon_r = 1$; $\rho = 1$ kg/m³

Phantom section: H Device Section

Measurement Standard: DAS4 (High Precision Assessment)

DASY4 Configuration:

- Probe: H3DV6 - SN6157; ; Calibrated: 3/11/2005
- Sensor-Surface: (Fix Surface)
- Electronics: DAE3 Sn500; Calibrated: 2/7/2005
- Phantom: HAC Test Arch; Type: SD HAC P01 BA; Serial: 1011
- Measurement SW: DAS4, V4.5 Build 19; Postprocessing SW: SEMCAD, V1.8 Build 146

H Scan - H-ch/Hearing Aid Compatibility Test (101x101x1): Measurement grid: dx=5mm, dy=5mm

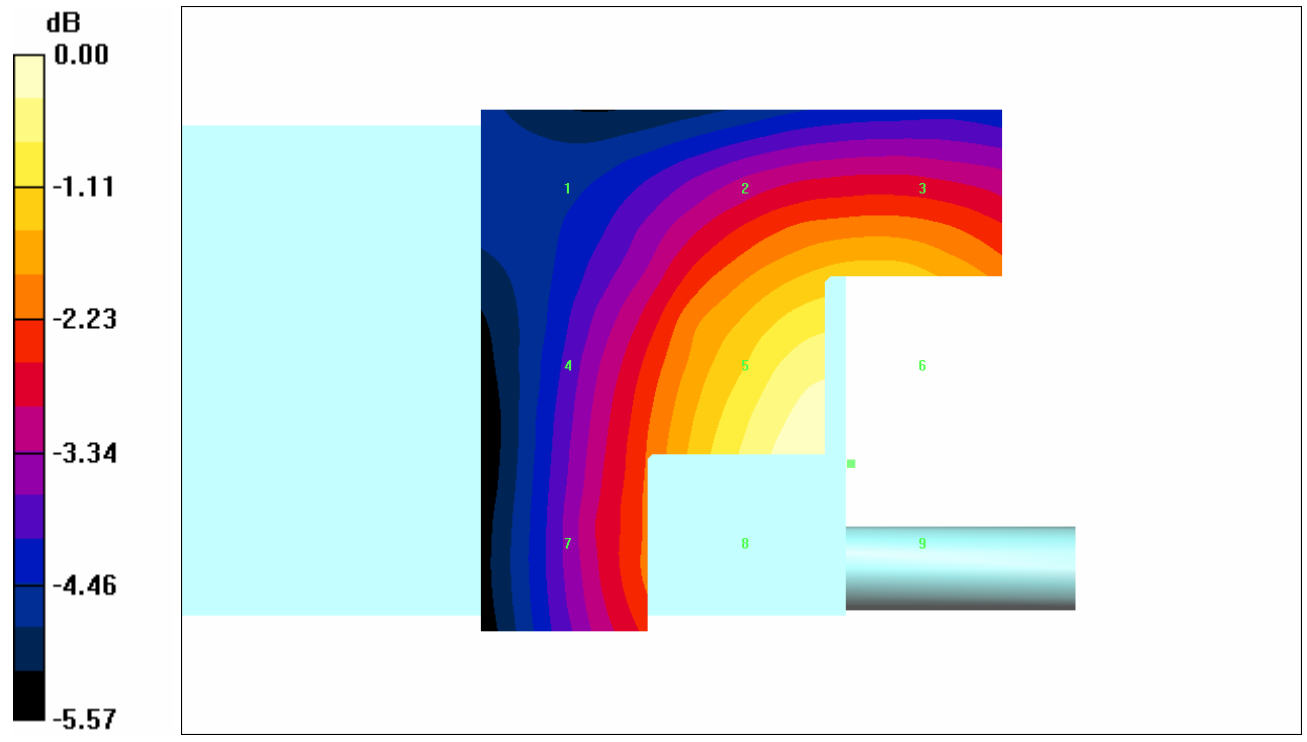
Maximum value of Total field (slot averaged) = 0.180 A/m

Hearing Aid Near-Field Category: M4 (AWF 0 dB)

H in A/m (Time averaged) H in A/m (Slot averaged)

Grid 1 0.124	Grid 2 0.154	Grid 3 0.156	Grid 1 0.124	Grid 2 0.154	Grid 3 0.156
Grid 4 0.140	Grid 5 0.180	Grid 6 0.180	Grid 4 0.140	Grid 5 0.180	Grid 6 0.180
Grid 7 0.141	Grid 8 0.180	Grid 9 0.180	Grid 7 0.141	Grid 8 0.180	Grid 9 0.180

Category	AWF (dB)	Limits for E-Field Emissions (V/m)	Limits for H-Field Emissions (A/m)
M1	0	199.5 - 354.8	0.6 - 1.07
	-5	149.6 - 266.1	0.45 - 0.8
M2	0	112.2 - 199.5	0.34 - 0.6
	-5	84.1 - 149.6	0.25 - 0.45
M3	0	63.1 - 112.2	0.19 - 0.34
	-5	47.3 - 84.1	0.15 - 0.25
M4	0	<63.1	<0.19
	-5	<47.3	<0.15



0 dB = 0.180A/m