

Test Laboratory: Compliance Certification Services

1_HAC_E_Device PCS band (Backlight on - Keypad close)

DUT: Kyocera; Type: KX5-5C1; Serial: 20-M7405-01

Communication System: CDMA PCS band; Frequency: 1851.25 MHz; Duty Cycle: 1:1.08

Medium parameters used: $\sigma = 0$ mho/m, $\epsilon_r = 1$; $\rho = 1000$ kg/m³

Phantom section: E Device Section

Measurement Standard: DAS4 (High Precision Assessment)

DASY4 Configuration:

- Probe: ER3DV6 - SN2339; ConvF(1, 1, 1); Calibrated: 3/11/2005
- Sensor-Surface: (Fix Surface)
- Electronics: DAE3 Sn500; Calibrated: 2/7/2005
- Phantom: HAC Test Arch; Type: SD HAC P01 BA; Serial: 1011
- Measurement SW: DAS4, V4.5 Build 19; Postprocessing SW: SEMCAD, V1.8 Build 146

E Scan - L-ch/Hearing Aid Compatibility Test (101x101x1): Measurement grid: dx=5mm, dy=5mm

Maximum value of Total field (slot averaged) = 56.3 V/m

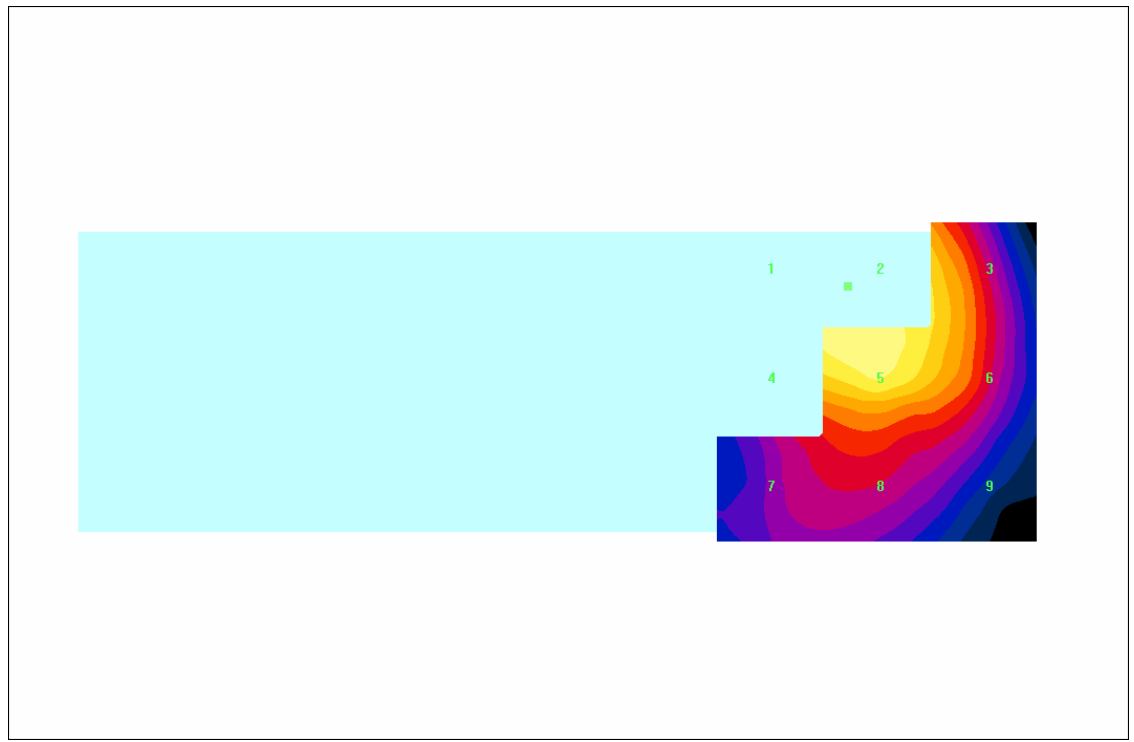
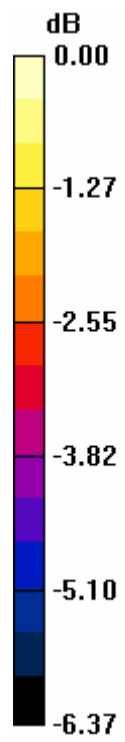
Hearing Aid Near-Field Category: M4 (AWF 0 dB)

E in V/m (Time averaged) E in V/m (Slot averaged)

| | | |
|--------|--------|--------|
| Grid 1 | Grid 2 | Grid 3 |
| 54.4 | 56.9 | 49.6 |
| Grid 4 | Grid 5 | Grid 6 |
| 52.0 | 54.1 | 49.3 |
| Grid 7 | Grid 8 | Grid 9 |
| 40.2 | 42.0 | 39.6 |

| | | |
|--------|--------|--------|
| Grid 1 | Grid 2 | Grid 3 |
| 56.6 | 59.1 | 51.5 |
| Grid 4 | Grid 5 | Grid 6 |
| 54.1 | 56.3 | 51.3 |
| Grid 7 | Grid 8 | Grid 9 |
| 41.8 | 43.6 | 41.2 |

| Category | AWF (dB) | Limits for E-Field Emissions (V/m) | Limits for H-Field Emissions (A/m) |
|----------|----------|------------------------------------|------------------------------------|
| M1 | 0 | 199.5 - 354.8 | 0.6 - 1.07 |
| | -5 | 149.6 - 266.1 | 0.45 - 0.8 |
| M2 | 0 | 112.2 - 199.5 | 0.34 - 0.6 |
| | -5 | 84.1 - 149.6 | 0.25 - 0.45 |
| M3 | 0 | 63.1 - 112.2 | 0.19 - 0.34 |
| | -5 | 47.3 - 84.1 | 0.15 - 0.25 |
| M4 | 0 | <63.1 | <0.19 |
| | -5 | <47.3 | <0.15 |



0 dB = 56.9V/m

Test Laboratory: Compliance Certification Services

1_HAC_E_Device PCS band (Backlight on - Keypad close)

DUT: Kyocera; Type: KX5-5C1; Serial: 20-M7405-01

Communication System: CDMA PCS band; Frequency: 1880 MHz; Duty Cycle: 1:1.08

Medium parameters used: $\sigma = 0$ mho/m, $\epsilon_r = 1$; $\rho = 1000$ kg/m³

Phantom section: E Device Section

Measurement Standard: DAS4 (High Precision Assessment)

DASY4 Configuration:

- Probe: ER3DV6 - SN2339; ConvF(1, 1, 1); Calibrated: 3/11/2005
- Sensor-Surface: (Fix Surface)
- Electronics: DAE3 Sn500; Calibrated: 2/7/2005
- Phantom: HAC Test Arch; Type: SD HAC P01 BA; Serial: 1011
- Measurement SW: DAS4, V4.5 Build 19; Postprocessing SW: SEMCAD, V1.8 Build 146

E Scan - M-ch/Hearing Aid Compatibility Test (101x101x1): Measurement grid: dx=5mm, dy=5mm

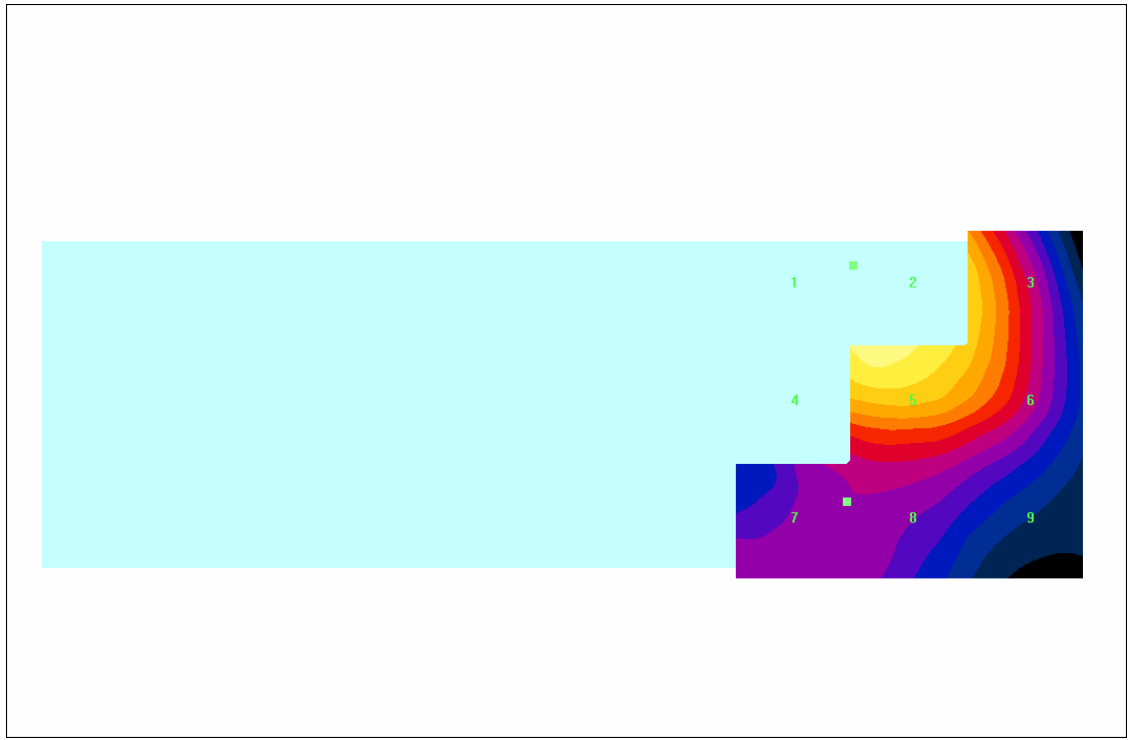
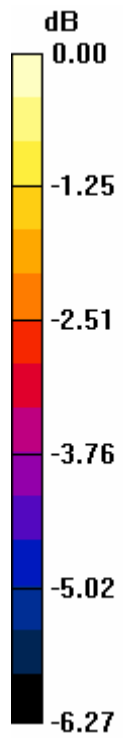
Maximum value of Total field (slot averaged) = 54.0 V/m

Hearing Aid Near-Field Category: M4 (AWF 0 dB)

E in V/m (Time averaged) E in V/m (Slot averaged)

| | | | | | |
|----------------|----------------|----------------|----------------|----------------|----------------|
| Grid 1 56.1 | Grid 2 56.1 | Grid 3 48.5 | Grid 1 58.3 | Grid 2 58.3 | Grid 3 50.4 |
| Grid 4 50.9 | Grid 5 52.0 | Grid 6 47.4 | Grid 4 52.9 | Grid 5 54.0 | Grid 6 49.2 |
| Grid 7 37.3 | Grid 8 38.1 | Grid 9 35.9 | Grid 7 38.7 | Grid 8 39.6 | Grid 9 37.3 |

| Category | AWF (dB) | Limits for E-Field Emissions (V/m) | Limits for H-Field Emissions (A/m) |
|----------|----------|------------------------------------|------------------------------------|
| M1 | 0 | 199.5 - 354.8 | 0.6 - 1.07 |
| | -5 | 149.6 - 266.1 | 0.45 - 0.8 |
| M2 | 0 | 112.2 - 199.5 | 0.34 - 0.6 |
| | -5 | 84.1 - 149.6 | 0.25 - 0.45 |
| M3 | 0 | 63.1 - 112.2 | 0.19 - 0.34 |
| | -5 | 47.3 - 84.1 | 0.15 - 0.25 |
| M4 | 0 | <63.1 | <0.19 |
| | -5 | <47.3 | <0.15 |



0 dB = 56.1V/m

Test Laboratory: Compliance Certification Services

1_HAC_E_Device PCS band (Backlight on - Keypad close)

DUT: Kyocera; Type: KX5-5C1; Serial: 20-M7405-01

Communication System: CDMA PCS band; Frequency: 1908.75 MHz; Duty Cycle: 1:1.08

Medium parameters used: $\sigma = 0$ mho/m, $\epsilon_r = 1$; $\rho = 1000$ kg/m³

Phantom section: E Device Section

Measurement Standard: DAS4 (High Precision Assessment)

DASY4 Configuration:

- Probe: ER3DV6 - SN2339; ConvF(1, 1, 1); Calibrated: 3/11/2005
- Sensor-Surface: (Fix Surface)
- Electronics: DAE3 Sn500; Calibrated: 2/7/2005
- Phantom: HAC Test Arch; Type: SD HAC P01 BA; Serial: 1011
- Measurement SW: DAS4, V4.5 Build 19; Postprocessing SW: SEMCAD, V1.8 Build 146

E Scan - H-ch/Hearing Aid Compatibility Test (101x101x1): Measurement grid: dx=5mm, dy=5mm

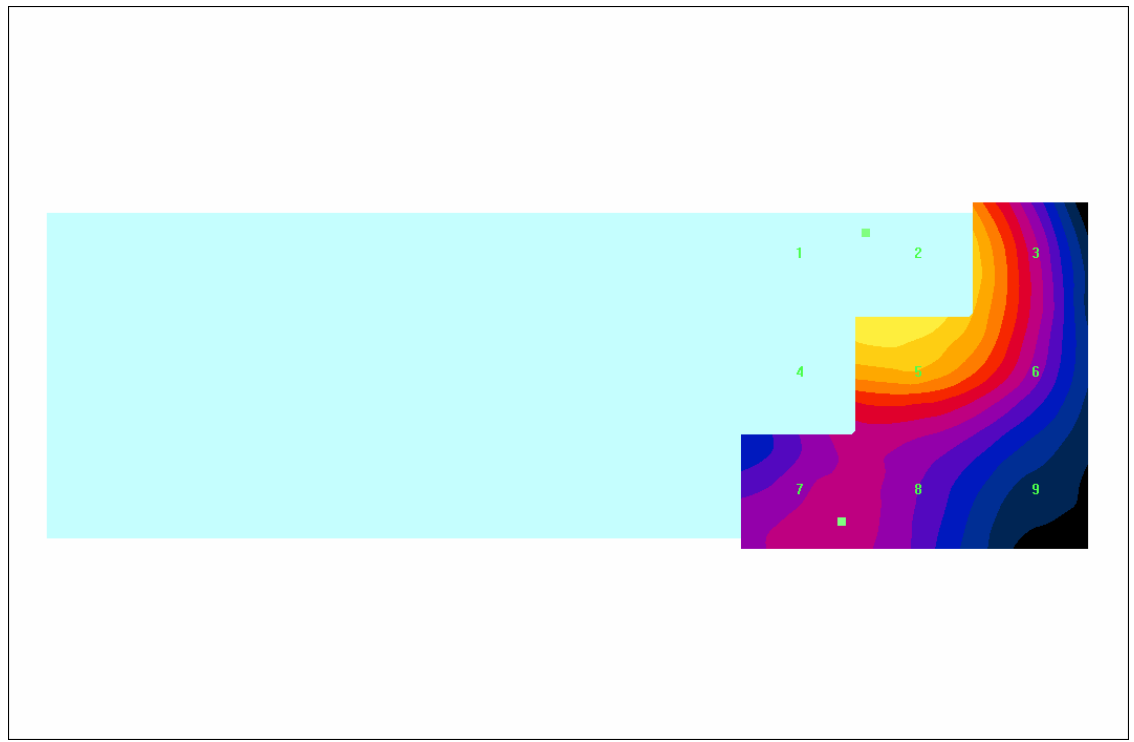
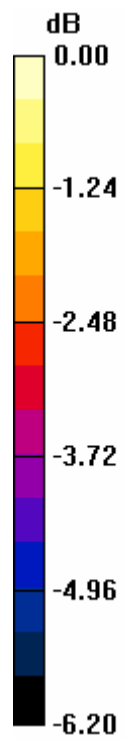
Maximum value of Total field (slot averaged) = 48.1 V/m

Hearing Aid Near-Field Category: M4 (AWF 0 dB)

E in V/m (Time averaged) E in V/m (Slot averaged)

| | | | | | |
|----------------|----------------|----------------|----------------|----------------|----------------|
| Grid 1 50.9 | Grid 2 51.0 | Grid 3 43.4 | Grid 1 52.9 | Grid 2 53.0 | Grid 3 45.1 |
| Grid 4 45.4 | Grid 5 46.3 | Grid 6 42.0 | Grid 4 47.2 | Grid 5 48.1 | Grid 6 43.7 |
| Grid 7 34.2 | Grid 8 34.2 | Grid 9 31.8 | Grid 7 35.5 | Grid 8 35.5 | Grid 9 33.0 |

| Category | AWF (dB) | Limits for E-Field Emissions (V/m) | Limits for H-Field Emissions (A/m) |
|----------|----------|------------------------------------|------------------------------------|
| M1 | 0 | 199.5 - 354.8 | 0.6 - 1.07 |
| | -5 | 149.6 - 266.1 | 0.45 - 0.8 |
| M2 | 0 | 112.2 - 199.5 | 0.34 - 0.6 |
| | -5 | 84.1 - 149.6 | 0.25 - 0.45 |
| M3 | 0 | 63.1 - 112.2 | 0.19 - 0.34 |
| | -5 | 47.3 - 84.1 | 0.15 - 0.25 |
| M4 | 0 | <63.1 | <0.19 |
| | -5 | <47.3 | <0.15 |



0 dB = 51.0V/m

Test Laboratory: Compliance Certification Services

2_HAC_E_Device PCS band (Backlight off - Keypad open)**DUT: Kyocera; Type: KX5-5C1; Serial: 20-M7405-01**

Communication System: CDMA PCS band; Frequency: 1851.25 MHz; Duty Cycle: 1:1.08

Medium parameters used: $\sigma = 0$ mho/m, $\epsilon_r = 1$; $\rho = 1000$ kg/m³

Phantom section: E Device Section

Measurement Standard: DASYS4 (High Precision Assessment)

DASY4 Configuration:

- Probe: ER3DV6 - SN2339; ConvF(1, 1, 1); Calibrated: 3/11/2005
- Sensor-Surface: (Fix Surface)
- Electronics: DAE3 Sn500; Calibrated: 2/7/2005
- Phantom: HAC Test Arch; Type: SD HAC P01 BA;
- Measurement SW: DASYS4, V4.5 Build 19;

E Scan - L-ch/Hearing Aid Compatibility Test (101x101x1): Measurement grid: dx=5mm, dy=5mm

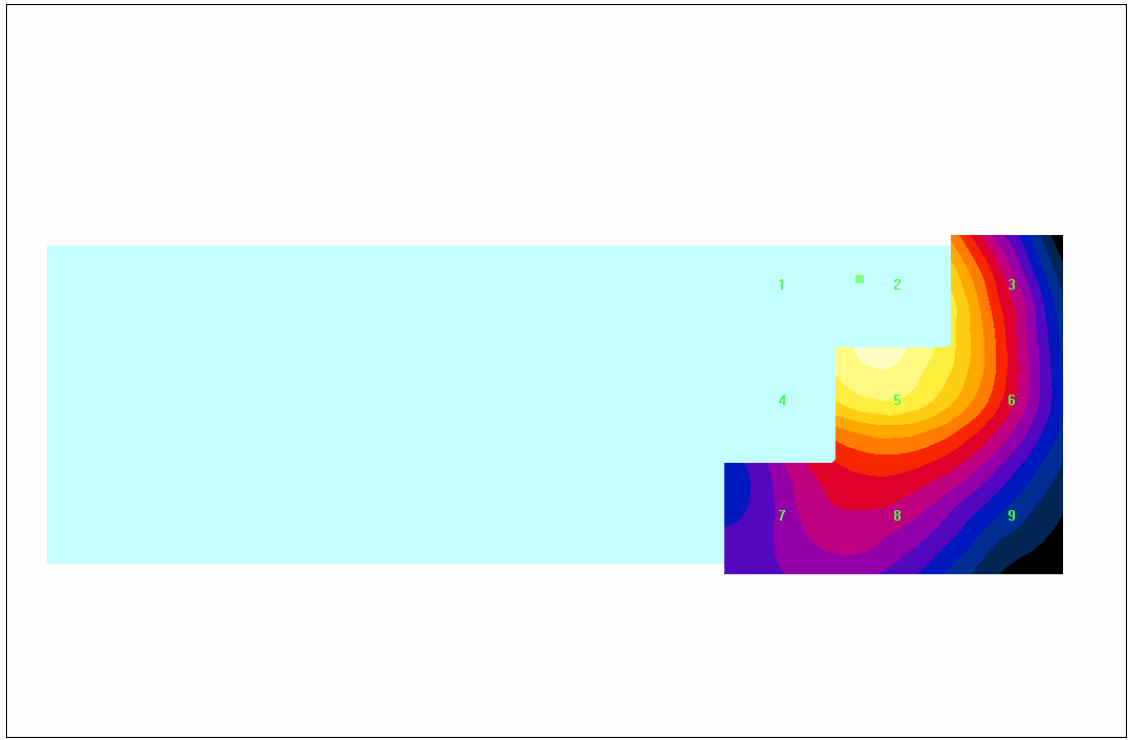
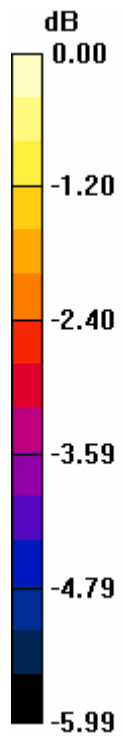
Maximum value of Total field (slot averaged) = 54.9 V/m

Hearing Aid Near-Field Category: M4 (AWF 0 dB)

E in V/m (Time averaged) E in V/m (Slot averaged)

| | | | | | |
|--------|--------|--------|--------|--------|--------|
| Grid 1 | Grid 2 | Grid 3 | Grid 1 | Grid 2 | Grid 3 |
| 53.3 | 54.3 | 48.1 | 55.4 | 56.4 | 50.0 |
| Grid 4 | Grid 5 | Grid 6 | Grid 4 | Grid 5 | Grid 6 |
| 50.5 | 52.8 | 47.9 | 52.4 | 54.9 | 49.8 |
| Grid 7 | Grid 8 | Grid 9 | Grid 7 | Grid 8 | Grid 9 |
| 39.3 | 40.5 | 38.5 | 40.8 | 42.1 | 40.0 |

| Category | AWF (dB) | Limits for E-Field Emissions (V/m) | Limits for H-Field Emissions (A/m) |
|----------|----------|------------------------------------|------------------------------------|
| M1 | 0 | 199.5 - 354.8 | 0.6 - 1.07 |
| | -5 | 149.6 - 266.1 | 0.45 - 0.8 |
| M2 | 0 | 112.2 - 199.5 | 0.34 - 0.6 |
| | -5 | 84.1 - 149.6 | 0.25 - 0.45 |
| M3 | 0 | 63.1 - 112.2 | 0.19 - 0.34 |
| | -5 | 47.3 - 84.1 | 0.15 - 0.25 |
| M4 | 0 | <63.1 | <0.19 |
| | -5 | <47.3 | <0.15 |



0 dB = 54.3V/m

Test Laboratory: Compliance Certification Services

2_HAC_E_Device PCS band (Backlight off - Keypad open)**DUT: Kyocera; Type: KX5-5C1; Serial: 20-M7405-01**

Communication System: CDMA PCS band; Frequency: 1880 MHz; Duty Cycle: 1:1.08

Medium parameters used: $\sigma = 0$ mho/m, $\epsilon_r = 1$; $\rho = 1000$ kg/m³

Phantom section: E Device Section

Measurement Standard: DAS4 (High Precision Assessment)

DASY4 Configuration:

- Probe: ER3DV6 - SN2339; ConvF(1, 1, 1); Calibrated: 3/11/2005
- Sensor-Surface: (Fix Surface)
- Electronics: DAE3 Sn500; Calibrated: 2/7/2005
- Phantom: HAC Test Arch; Type: SD HAC P01 BA;
- Measurement SW: DAS4, V4.5 Build 19;

E Scan - M-ch/Hearing Aid Compatibility Test (101x101x1): Measurement grid: dx=5mm, dy=5mm

Maximum value of Total field (slot averaged) = 53.9 V/m

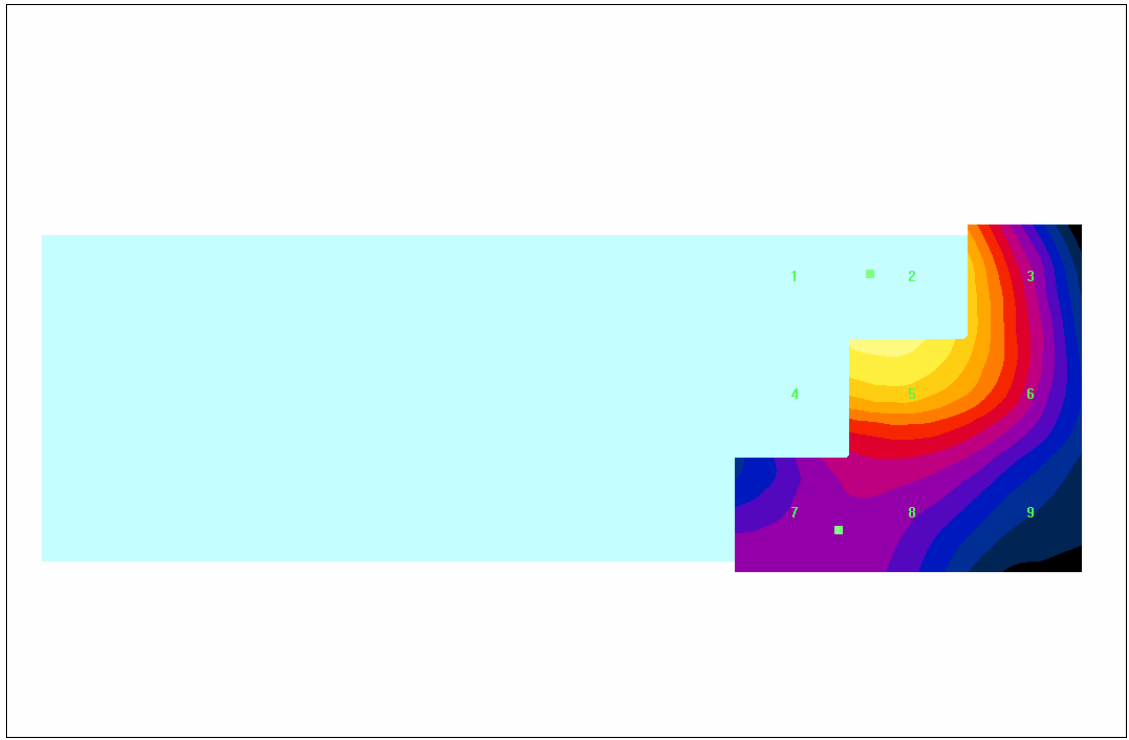
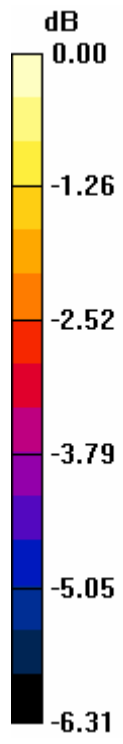
Hearing Aid Near-Field Category: M4 (AWF 0 dB)

E in V/m (Time averaged) E in V/m (Slot averaged)

| | | |
|--------|--------|--------|
| Grid 1 | Grid 2 | Grid 3 |
| 55.4 | 55.9 | 47.6 |
| Grid 4 | Grid 5 | Grid 6 |
| 50.8 | 51.9 | 47.1 |
| Grid 7 | Grid 8 | Grid 9 |
| 37.4 | 38.1 | 36.2 |

| | | |
|--------|--------|--------|
| Grid 1 | Grid 2 | Grid 3 |
| 57.5 | 58.1 | 49.5 |
| Grid 4 | Grid 5 | Grid 6 |
| 52.8 | 53.9 | 49.0 |
| Grid 7 | Grid 8 | Grid 9 |
| 38.9 | 39.6 | 37.6 |

| Category | AWF (dB) | Limits for E-Field Emissions (V/m) | Limits for H-Field Emissions (A/m) |
|----------|----------|------------------------------------|------------------------------------|
| M1 | 0 | 199.5 - 354.8 | 0.6 - 1.07 |
| | -5 | 149.6 - 266.1 | 0.45 - 0.8 |
| M2 | 0 | 112.2 - 199.5 | 0.34 - 0.6 |
| | -5 | 84.1 - 149.6 | 0.25 - 0.45 |
| M3 | 0 | 63.1 - 112.2 | 0.19 - 0.34 |
| | -5 | 47.3 - 84.1 | 0.15 - 0.25 |
| M4 | 0 | <63.1 | <0.19 |
| | -5 | <47.3 | <0.15 |



0 dB = 55.9V/m

Test Laboratory: Compliance Certification Services

2_HAC_E_Device PCS band (Backlight off - Keypad open)**DUT: Kyocera; Type: KX5-5C1; Serial: 20-M7405-01**

Communication System: CDMA PCS band; Frequency: 1908.75 MHz; Duty Cycle: 1:1.08

Medium parameters used: $\sigma = 0$ mho/m, $\epsilon_r = 1$; $\rho = 1000$ kg/m³

Phantom section: E Device Section

Measurement Standard: DASYS4 (High Precision Assessment)

DASY4 Configuration:

- Probe: ER3DV6 - SN2339; ConvF(1, 1, 1); Calibrated: 3/11/2005
- Sensor-Surface: (Fix Surface)
- Electronics: DAE3 Sn500; Calibrated: 2/7/2005
- Phantom: HAC Test Arch; Type: SD HAC P01 BA;
- Measurement SW: DASYS4, V4.5 Build 19;

E Scan - H-ch/Hearing Aid Compatibility Test (101x101x1): Measurement grid: dx=5mm, dy=5mm

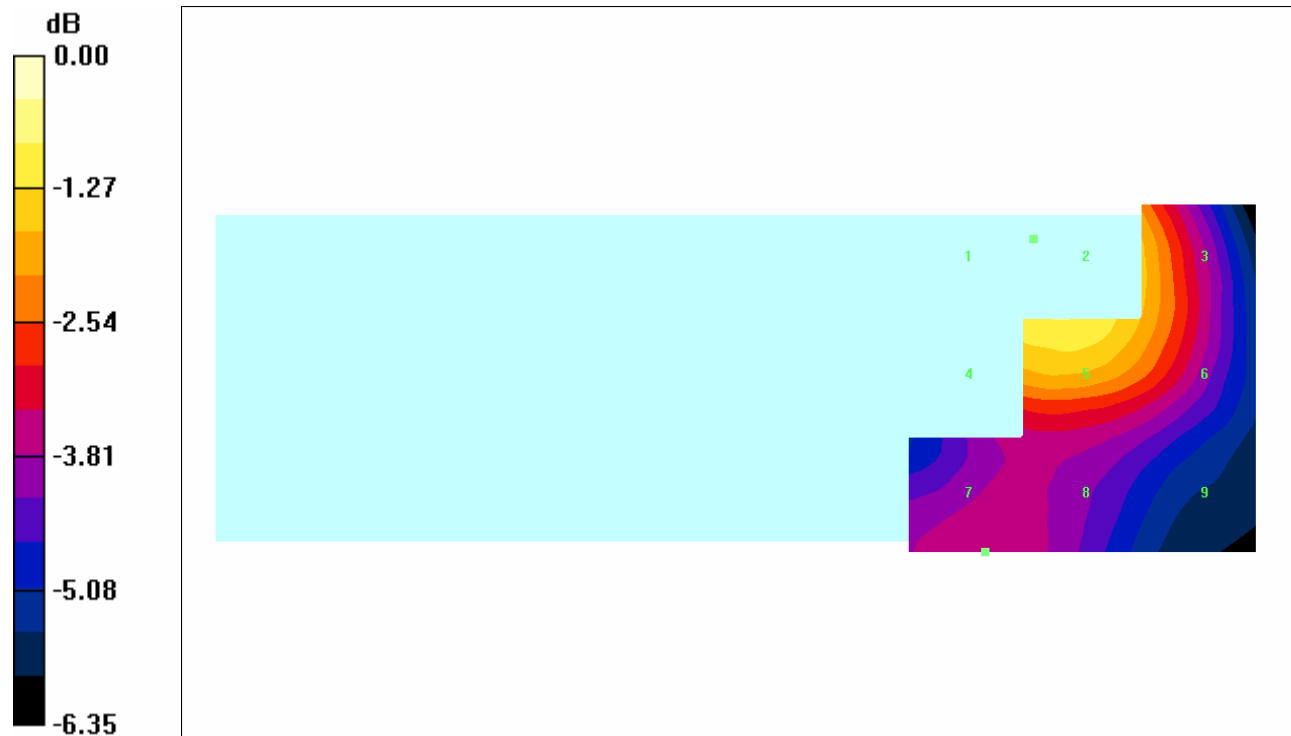
Maximum value of Total field (slot averaged) = 48.4 V/m

Hearing Aid Near-Field Category: M4 (AWF 0 dB)

E in V/m (Time averaged) E in V/m (Slot averaged)

| | | | | | |
|--------|--------|--------|--------|--------|--------|
| Grid 1 | Grid 2 | Grid 3 | Grid 1 | Grid 2 | Grid 3 |
| 51.1 | 51.3 | 43.0 | 53.1 | 53.3 | 44.6 |
| Grid 4 | Grid 5 | Grid 6 | Grid 4 | Grid 5 | Grid 6 |
| 45.8 | 46.6 | 42.1 | 47.6 | 48.4 | 43.8 |
| Grid 7 | Grid 8 | Grid 9 | Grid 7 | Grid 8 | Grid 9 |
| 34.3 | 34.3 | 32.0 | 35.6 | 35.7 | 33.2 |

| Category | AWF (dB) | Limits for E-Field Emissions (V/m) | Limits for H-Field Emissions (A/m) |
|----------|----------|------------------------------------|------------------------------------|
| M1 | 0 | 199.5 - 354.8 | 0.6 - 1.07 |
| | -5 | 149.6 - 266.1 | 0.45 - 0.8 |
| M2 | 0 | 112.2 - 199.5 | 0.34 - 0.6 |
| | -5 | 84.1 - 149.6 | 0.25 - 0.45 |
| M3 | 0 | 63.1 - 112.2 | 0.19 - 0.34 |
| | -5 | 47.3 - 84.1 | 0.15 - 0.25 |
| M4 | 0 | <63.1 | <0.19 |
| | -5 | <47.3 | <0.15 |



0 dB = 51.3V/m

Test Laboratory: Compliance Certification Services

1_HAC_E_Device PCS band (Backlight on - Keypad close)

DUT: Kyocera; Type: KX5-5C1; Serial: 20-M7405-01

Communication System: CDMA PCS band; Frequency: 1851.25 MHz; Duty Cycle: 1:1.08

Medium parameters used: $\sigma = 0$ mho/m, $\epsilon_r = 1$; $\rho = 1000$ kg/m³

Phantom section: E Device Section

Measurement Standard: DAS4 (High Precision Assessment)

DASY4 Configuration:

- Probe: ER3DV6 - SN2339; ConvF(1, 1, 1); Calibrated: 3/11/2005
- Sensor-Surface: (Fix Surface)
- Electronics: DAE3 Sn500; Calibrated: 2/7/2005
- Phantom: HAC Test Arch; Type: SD HAC P01 BA; Serial: 1011
- Measurement SW: DAS4, V4.5 Build 19; Postprocessing SW: SEMCAD, V1.8 Build 146

E Scan - L-ch/Hearing Aid Compatibility Test (101x101x1): Measurement grid: dx=5mm, dy=5mm

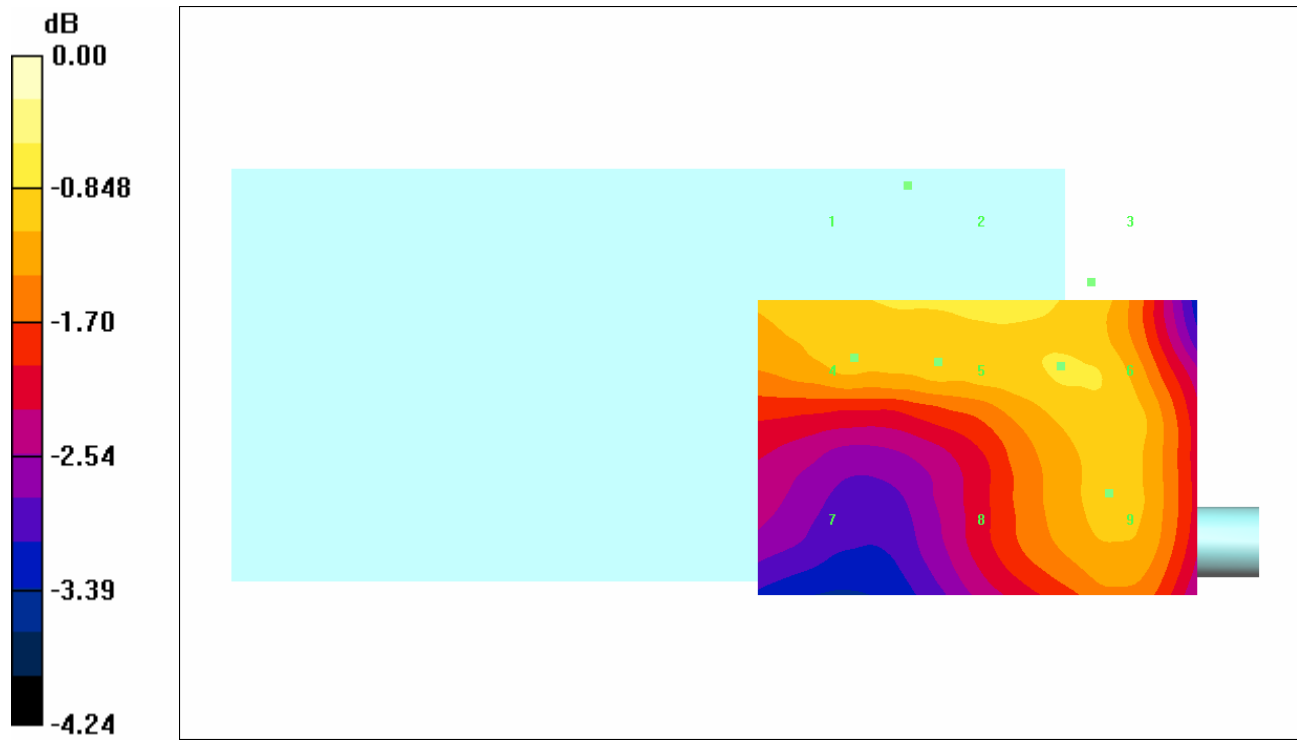
Maximum value of Total field (slot averaged) = 56.6 V/m

Hearing Aid Near-Field Category: M4 (AWF 0 dB)

E in V/m (Time averaged) E in V/m (Slot averaged)

| | | | | | |
|-----------------------|-----------------------|-----------------------|-----------------------|-----------------------|-----------------------|
| Grid 1 59.2 | Grid 2 59.2 | Grid 3 55.3 | Grid 1 61.5 | Grid 2 61.5 | Grid 3 57.5 |
| Grid 4 54.0 | Grid 5 54.5 | Grid 6 54.0 | Grid 4 56.1 | Grid 5 56.6 | Grid 6 56.1 |
| Grid 7 46.0 | Grid 8 50.9 | Grid 9 52.9 | Grid 7 47.8 | Grid 8 52.9 | Grid 9 55.0 |

| Category | AWF (dB) | Limits for E-Field Emissions (V/m) | Limits for H-Field Emissions (A/m) |
|----------|----------|------------------------------------|------------------------------------|
| M1 | 0 | 199.5 - 354.8 | 0.6 - 1.07 |
| | -5 | 149.6 - 266.1 | 0.45 - 0.8 |
| M2 | 0 | 112.2 - 199.5 | 0.34 - 0.6 |
| | -5 | 84.1 - 149.6 | 0.25 - 0.45 |
| M3 | 0 | 63.1 - 112.2 | 0.19 - 0.34 |
| | -5 | 47.3 - 84.1 | 0.15 - 0.25 |
| M4 | 0 | <63.1 | <0.19 |
| | -5 | <47.3 | <0.15 |



0 dB = 59.2V/m

Test Laboratory: Compliance Certification Services

1_HAC_E_Device PCS band (Backlight on - Keypad close)

DUT: Kyocera; Type: KX5-5C1; Serial: 20-M7405-01

Communication System: CDMA PCS band; Frequency: 1880 MHz; Duty Cycle: 1:1.08

Medium parameters used: $\sigma = 0$ mho/m, $\epsilon_r = 1$; $\rho = 1000$ kg/m³

Phantom section: E Device Section

Measurement Standard: DAS4 (High Precision Assessment)

DASY4 Configuration:

- Probe: ER3DV6 - SN2339; ConvF(1, 1, 1); Calibrated: 3/11/2005
- Sensor-Surface: (Fix Surface)
- Electronics: DAE3 Sn500; Calibrated: 2/7/2005
- Phantom: HAC Test Arch; Type: SD HAC P01 BA; Serial: 1011
- Measurement SW: DAS4, V4.5 Build 19; Postprocessing SW: SEMCAD, V1.8 Build 146

E Scan - M-ch/Hearing Aid Compatibility Test (101x101x1): Measurement grid: dx=5mm, dy=5mm

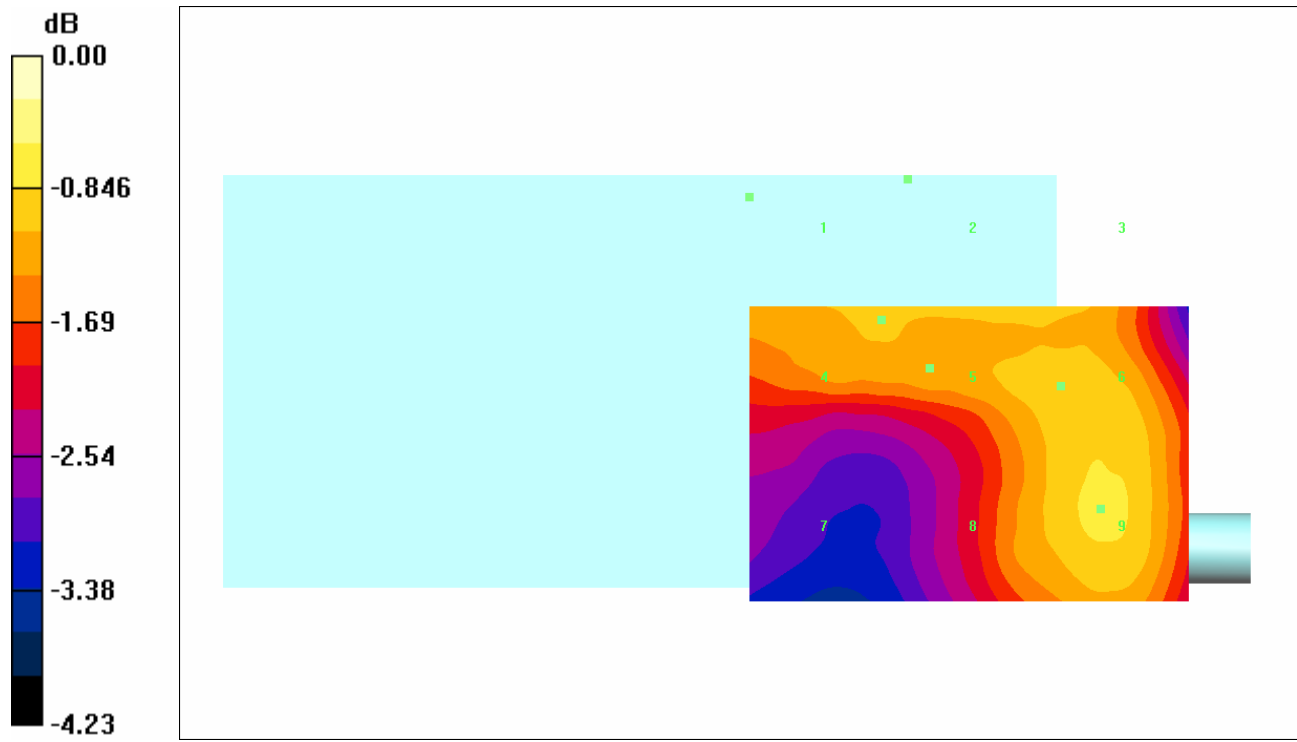
Maximum value of Total field (slot averaged) = 58.3 V/m

Hearing Aid Near-Field Category: M4 (AWF 0 dB)

E in V/m (Time averaged) E in V/m (Slot averaged)

| | | | | | |
|-----------------------|-----------------------|-----------------------|-----------------------|-----------------------|-----------------------|
| Grid 1 61.0 | Grid 2 61.1 | Grid 3 56.0 | Grid 1 63.4 | Grid 2 63.5 | Grid 3 58.2 |
| Grid 4 54.3 | Grid 5 54.7 | Grid 6 55.4 | Grid 4 56.4 | Grid 5 56.9 | Grid 6 57.6 |
| Grid 7 46.2 | Grid 8 53.5 | Grid 9 56.1 | Grid 7 48.0 | Grid 8 55.5 | Grid 9 58.3 |

| Category | AWF (dB) | Limits for E-Field Emissions (V/m) | Limits for H-Field Emissions (A/m) |
|----------|----------|------------------------------------|------------------------------------|
| M1 | 0 | 199.5 - 354.8 | 0.6 - 1.07 |
| | -5 | 149.6 - 266.1 | 0.45 - 0.8 |
| M2 | 0 | 112.2 - 199.5 | 0.34 - 0.6 |
| | -5 | 84.1 - 149.6 | 0.25 - 0.45 |
| M3 | 0 | 63.1 - 112.2 | 0.19 - 0.34 |
| | -5 | 47.3 - 84.1 | 0.15 - 0.25 |
| M4 | 0 | <63.1 | <0.19 |
| | -5 | <47.3 | <0.15 |



0 dB = 61.1V/m

Test Laboratory: Compliance Certification Services

1_HAC_E_Device PCS band (Backlight on - Keypad close)

DUT: Kyocera; Type: KX5-5C1; Serial: 20-M7405-01

Communication System: CDMA PCS band; Frequency: 1908.75 MHz; Duty Cycle: 1:1.08

Medium parameters used: $\sigma = 0$ mho/m, $\epsilon_r = 1$; $\rho = 1000$ kg/m³

Phantom section: E Device Section

Measurement Standard: DAS4 (High Precision Assessment)

DASY4 Configuration:

- Probe: ER3DV6 - SN2339; ConvF(1, 1, 1); Calibrated: 3/11/2005
- Sensor-Surface: (Fix Surface)
- Electronics: DAE3 Sn500; Calibrated: 2/7/2005
- Phantom: HAC Test Arch; Type: SD HAC P01 BA; Serial: 1011
- Measurement SW: DAS4, V4.5 Build 19; Postprocessing SW: SEMCAD, V1.8 Build 146

E Scan - H-ch/Hearing Aid Compatibility Test (101x101x1): Measurement grid: dx=5mm, dy=5mm

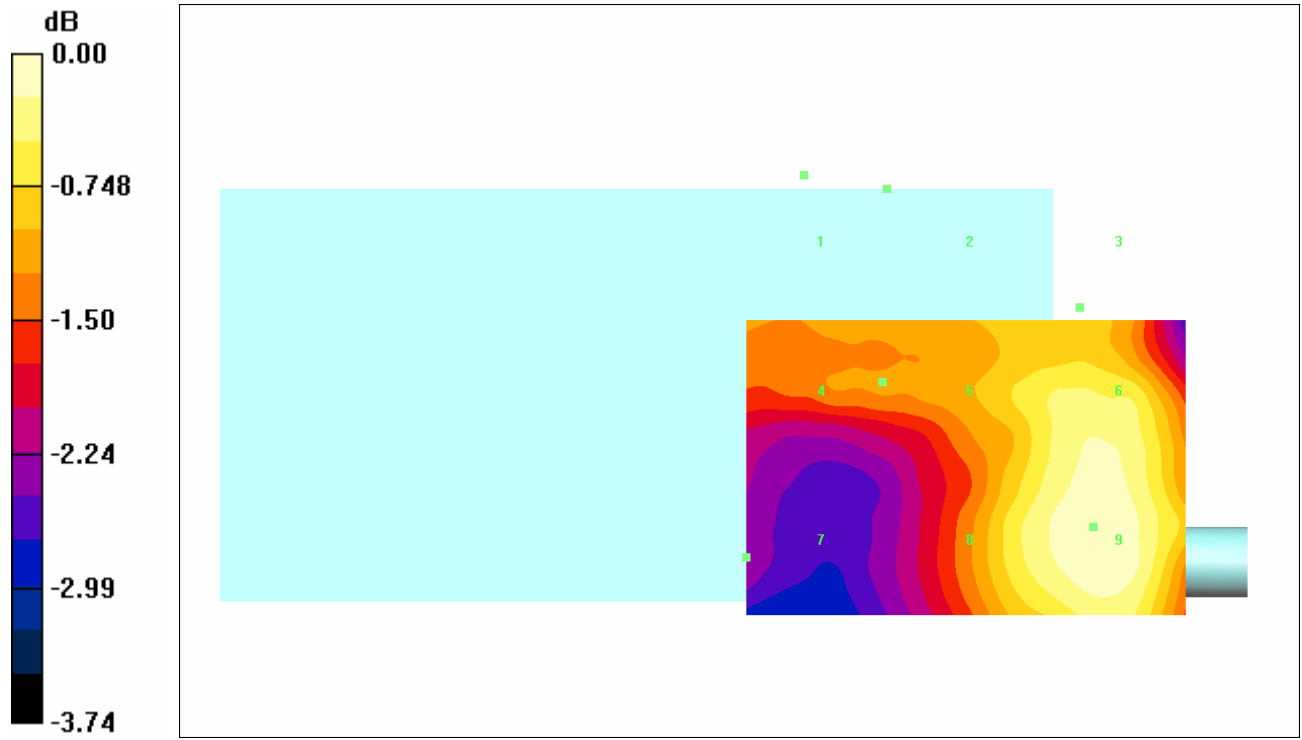
Maximum value of Total field (slot averaged) = 56.9 V/m

Hearing Aid Near-Field Category: M4 (AWF 0 dB)

E in V/m (Time averaged) E in V/m (Slot averaged)

| | | | | | |
|-----------------------|-----------------------|-----------------------|-----------------------|-----------------------|-----------------------|
| Grid 1 54.8 | Grid 2 54.8 | Grid 3 51.0 | Grid 1 56.9 | Grid 2 56.9 | Grid 3 53.0 |
| Grid 4 48.1 | Grid 5 51.2 | Grid 6 53.7 | Grid 4 50.0 | Grid 5 53.2 | Grid 6 55.8 |
| Grid 7 42.7 | Grid 8 52.6 | Grid 9 54.8 | Grid 7 44.3 | Grid 8 54.7 | Grid 9 56.9 |

| Category | AWF (dB) | Limits for E-Field Emissions (V/m) | Limits for H-Field Emissions (A/m) |
|----------|----------|------------------------------------|------------------------------------|
| M1 | 0 | 199.5 - 354.8 | 0.6 - 1.07 |
| | -5 | 149.6 - 266.1 | 0.45 - 0.8 |
| M2 | 0 | 112.2 - 199.5 | 0.34 - 0.6 |
| | -5 | 84.1 - 149.6 | 0.25 - 0.45 |
| M3 | 0 | 63.1 - 112.2 | 0.19 - 0.34 |
| | -5 | 47.3 - 84.1 | 0.15 - 0.25 |
| M4 | 0 | <63.1 | <0.19 |
| | -5 | <47.3 | <0.15 |



0 dB = 54.8V/m

Test Laboratory: Compliance Certification Services

2_HAC_E_Device PCS band (Backlight off - Keypad close)

DUT: Kyocera; Type: KX5-5C1; Serial: 20-M7405-01

Communication System: CDMA PCS band; Frequency: 1851.25 MHz; Duty Cycle: 1:1.08

Medium parameters used: $\sigma = 0$ mho/m, $\epsilon_r = 1$; $\rho = 1000$ kg/m³

Phantom section: E Device Section

Measurement Standard: DAS4 (High Precision Assessment)

DASY4 Configuration:

- Probe: ER3DV6 - SN2339; ConvF(1, 1, 1); Calibrated: 3/11/2005
- Sensor-Surface: (Fix Surface)
- Electronics: DAE3 Sn500; Calibrated: 2/7/2005
- Phantom: HAC Test Arch; Type: SD HAC P01 BA; Serial: 1011
- Measurement SW: DAS4, V4.5 Build 19; Postprocessing SW: SEMCAD, V1.8 Build 146

E Scan - L-ch/Hearing Aid Compatibility Test (101x101x1): Measurement grid: dx=5mm, dy=5mm

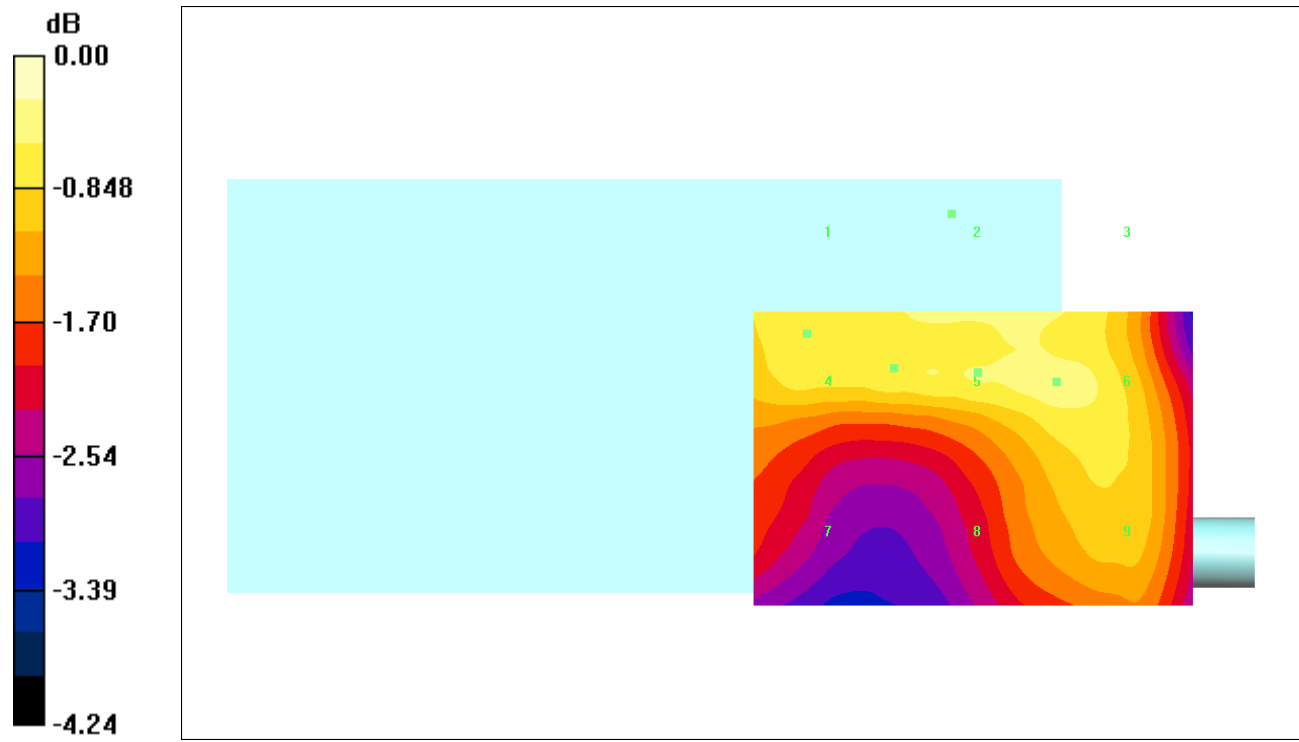
Maximum value of Total field (slot averaged) = 55.4 V/m

Hearing Aid Near-Field Category: M4 (AWF 0 dB)

E in V/m (Time averaged) E in V/m (Slot averaged)

| | | | | | |
|-----------------------|-----------------------|-----------------------|-----------------------|-----------------------|-----------------------|
| Grid 1 55.5 | Grid 2 55.6 | Grid 3 52.9 | Grid 1 57.7 | Grid 2 57.8 | Grid 3 55.0 |
| Grid 4 51.9 | Grid 5 53.0 | Grid 6 53.3 | Grid 4 54.0 | Grid 5 55.1 | Grid 6 55.4 |
| Grid 7 46.3 | Grid 8 49.1 | Grid 9 50.8 | Grid 7 48.1 | Grid 8 51.0 | Grid 9 52.8 |

| Category | AWF (dB) | Limits for E-Field Emissions (V/m) | Limits for H-Field Emissions (A/m) |
|----------|----------|------------------------------------|------------------------------------|
| M1 | 0 | 199.5 - 354.8 | 0.6 - 1.07 |
| | -5 | 149.6 - 266.1 | 0.45 - 0.8 |
| M2 | 0 | 112.2 - 199.5 | 0.34 - 0.6 |
| | -5 | 84.1 - 149.6 | 0.25 - 0.45 |
| M3 | 0 | 63.1 - 112.2 | 0.19 - 0.34 |
| | -5 | 47.3 - 84.1 | 0.15 - 0.25 |
| M4 | 0 | <63.1 | <0.19 |
| | -5 | <47.3 | <0.15 |



0 dB = 55.6V/m

Test Laboratory: Compliance Certification Services

2_HAC_E_Device PCS band (Backlight off - Keypad close)

DUT: Kyocera; Type: KX5-5C1; Serial: 20-M7405-01

Communication System: CDMA PCS band; Frequency: 1880 MHz; Duty Cycle: 1:1.08

Medium parameters used: $\sigma = 0$ mho/m, $\epsilon_r = 1$; $\rho = 1000$ kg/m³

Phantom section: E Device Section

Measurement Standard: DAS4 (High Precision Assessment)

DASY4 Configuration:

- Probe: ER3DV6 - SN2339; ConvF(1, 1, 1); Calibrated: 3/11/2005
- Sensor-Surface: (Fix Surface)
- Electronics: DAE3 Sn500; Calibrated: 2/7/2005
- Phantom: HAC Test Arch; Type: SD HAC P01 BA; Serial: 1011
- Measurement SW: DAS4, V4.5 Build 19; Postprocessing SW: SEMCAD, V1.8 Build 146

E Scan - M-ch/Hearing Aid Compatibility Test (101x101x1): Measurement grid: dx=5mm, dy=5mm

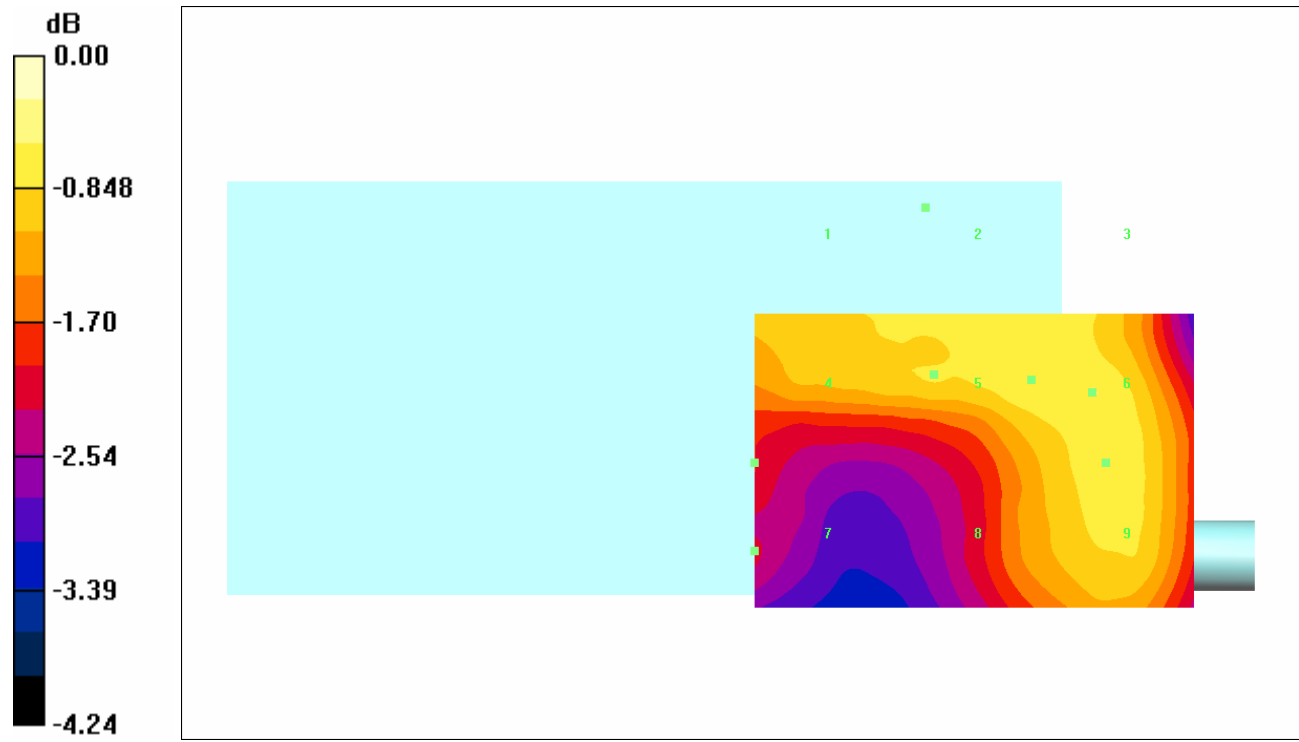
Maximum value of Total field (slot averaged) = 57.0 V/m

Hearing Aid Near-Field Category: M4 (AWF 0 dB)

E in V/m (Time averaged) E in V/m (Slot averaged)

| | | | | | |
|----------------|----------------|----------------|----------------|----------------|----------------|
| Grid 1 58.1 | Grid 2 58.5 | Grid 3 55.3 | Grid 1 60.4 | Grid 2 60.8 | Grid 3 57.5 |
| Grid 4 53.4 | Grid 5 54.6 | Grid 6 54.9 | Grid 4 55.5 | Grid 5 56.7 | Grid 6 57.0 |
| Grid 7 46.7 | Grid 8 51.7 | Grid 9 54.0 | Grid 7 48.6 | Grid 8 53.8 | Grid 9 56.1 |

| Category | AWF (dB) | Limits for E-Field Emissions (V/m) | Limits for H-Field Emissions (A/m) |
|----------|----------|------------------------------------|------------------------------------|
| M1 | 0 | 199.5 - 354.8 | 0.6 - 1.07 |
| | -5 | 149.6 - 266.1 | 0.45 - 0.8 |
| M2 | 0 | 112.2 - 199.5 | 0.34 - 0.6 |
| | -5 | 84.1 - 149.6 | 0.25 - 0.45 |
| M3 | 0 | 63.1 - 112.2 | 0.19 - 0.34 |
| | -5 | 47.3 - 84.1 | 0.15 - 0.25 |
| M4 | 0 | <63.1 | <0.19 |
| | -5 | <47.3 | <0.15 |



0 dB = 58.5V/m

Test Laboratory: Compliance Certification Services

2_HAC_E_Device PCS band (Backlight off - Keypad close)

DUT: Kyocera; Type: KX5-5C1; Serial: 20-M7405-01

Communication System: CDMA PCS band; Frequency: 1908.75 MHz; Duty Cycle: 1:1.08

Medium parameters used: $\sigma = 0$ mho/m, $\epsilon_r = 1$; $\rho = 1000$ kg/m³

Phantom section: E Device Section

Measurement Standard: DAS4 (High Precision Assessment)

DASY4 Configuration:

- Probe: ER3DV6 - SN2339; ConvF(1, 1, 1); Calibrated: 3/11/2005
- Sensor-Surface: (Fix Surface)
- Electronics: DAE3 Sn500; Calibrated: 2/7/2005
- Phantom: HAC Test Arch; Type: SD HAC P01 BA; Serial: 1011
- Measurement SW: DAS4, V4.5 Build 19; Postprocessing SW: SEMCAD, V1.8 Build 146

E Scan - H-ch/Hearing Aid Compatibility Test (101x101x1): Measurement grid: dx=5mm, dy=5mm

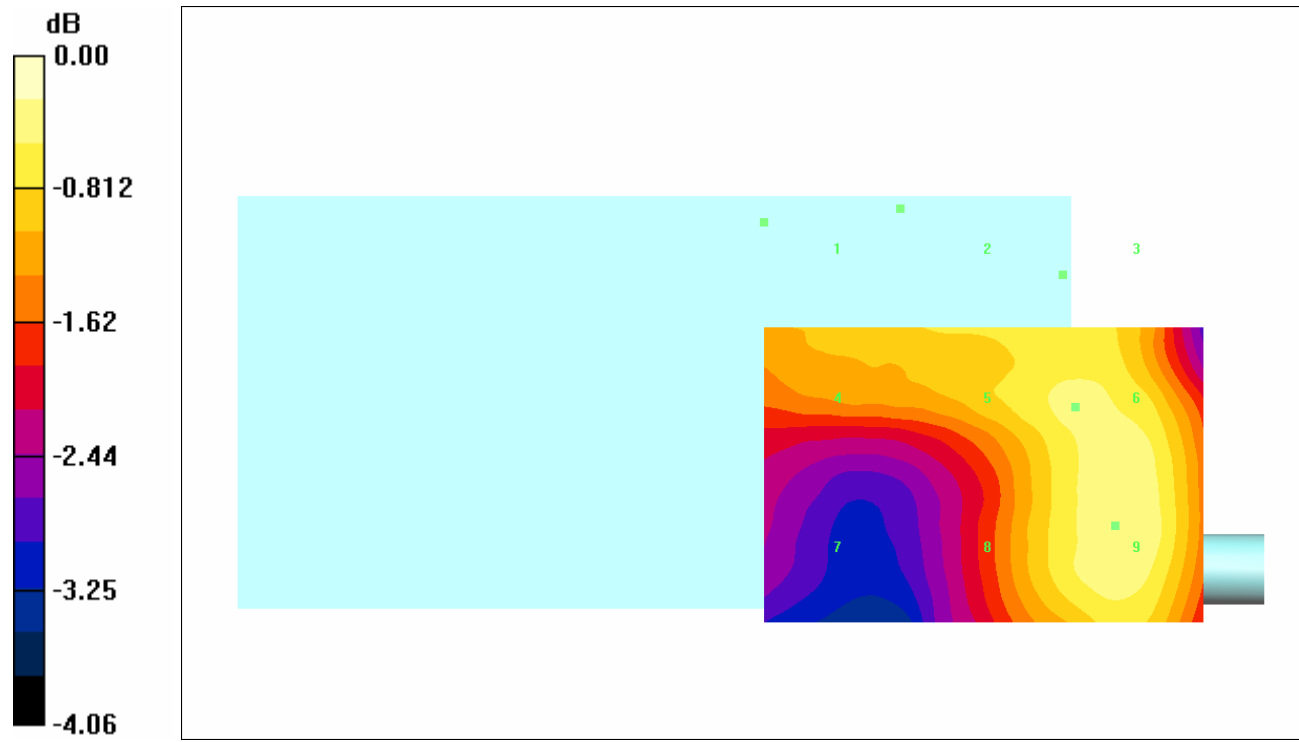
Maximum value of Total field (slot averaged) = 55.2 V/m

Hearing Aid Near-Field Category: M4 (AWF 0 dB)

E in V/m (Time averaged) E in V/m (Slot averaged)

| | | | | | |
|----------------|----------------|----------------|----------------|----------------|----------------|
| Grid 1 55.0 | Grid 2 54.9 | Grid 3 51.7 | Grid 1 57.1 | Grid 2 57.1 | Grid 3 53.7 |
| Grid 4 49.7 | Grid 5 51.9 | Grid 6 52.7 | Grid 4 51.7 | Grid 5 53.9 | Grid 6 54.7 |
| Grid 7 42.5 | Grid 8 50.5 | Grid 9 53.1 | Grid 7 44.2 | Grid 8 52.5 | Grid 9 55.2 |

| Category | AWF (dB) | Limits for E-Field Emissions (V/m) | Limits for H-Field Emissions (A/m) |
|----------|----------|------------------------------------|------------------------------------|
| M1 | 0 | 199.5 - 354.8 | 0.6 - 1.07 |
| | -5 | 149.6 - 266.1 | 0.45 - 0.8 |
| M2 | 0 | 112.2 - 199.5 | 0.34 - 0.6 |
| | -5 | 84.1 - 149.6 | 0.25 - 0.45 |
| M3 | 0 | 63.1 - 112.2 | 0.19 - 0.34 |
| | -5 | 47.3 - 84.1 | 0.15 - 0.25 |
| M4 | 0 | <63.1 | <0.19 |
| | -5 | <47.3 | <0.15 |



0 dB = 55.0V/m