

Test Laboratory: Compliance Certification Services

**HAC\_E\_Dipole 835 MHz\_CDMA Signal\_072505****DUT: HAC-Dipole 835 MHz; Type: D835V3; Serial: 1014**

Communication System: CDMA Signal; Frequency: 835.02 MHz; Duty Cycle: 1:1

Medium parameters used:  $\sigma = 0$  mho/m,  $\epsilon_r = 1$ ;  $\rho = 1000$  kg/m<sup>3</sup>

Phantom section: E Dipole Section

Measurement Standard: DAS4 (High Precision Assessment)

DASY4 Configuration:

- Probe: ER3DV6 - SN2339; ConvF(1, 1, 1); Calibrated: 3/11/2005
- Sensor-Surface: (Fix Surface)
- Electronics: DAE3 Sn500; Calibrated: 2/7/2005
- Phantom: HAC Test Arch; Type: SD HAC P01 BA;
- Measurement SW: DAS4, V4.5 Build 19;

**E Scan - ER probe center 10mm above CD835 Dipole/Hearing Aid Compatibility Test (41x361x1):**

Measurement grid: dx=5mm, dy=5mm

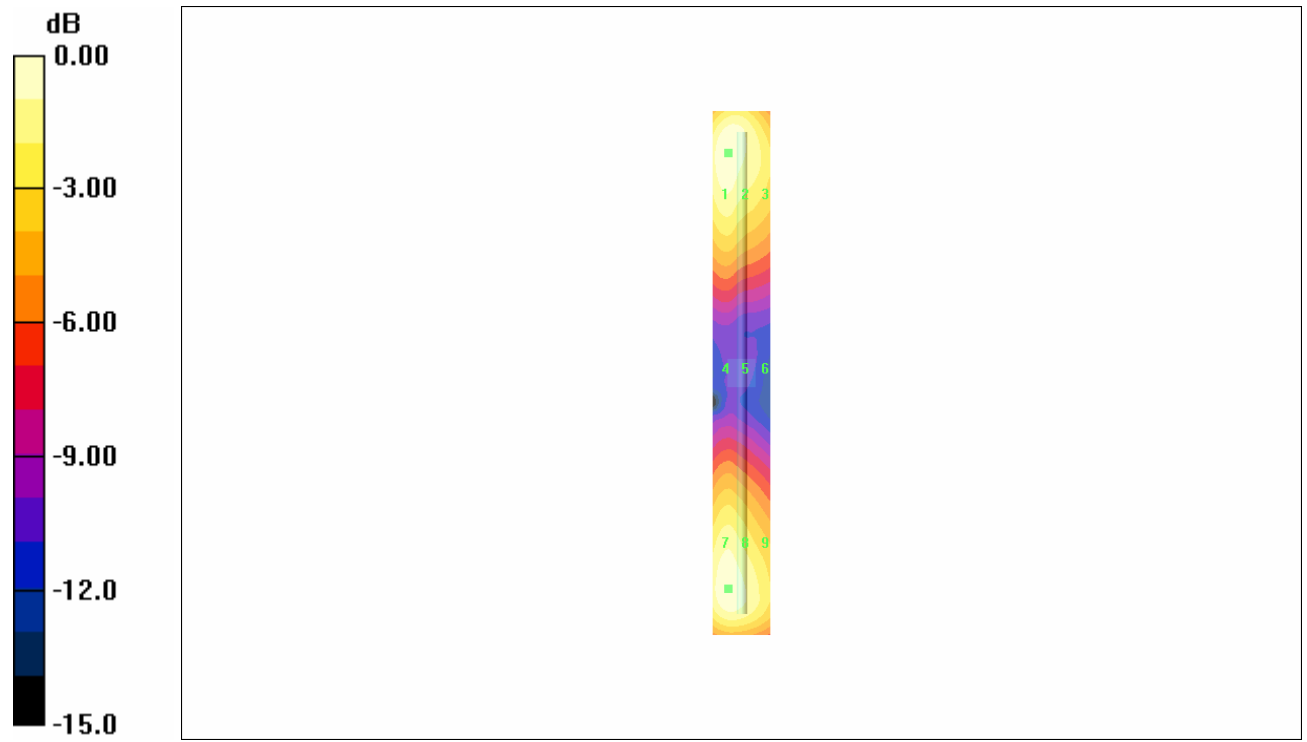
Maximum value of Total field (slot averaged) = 175.9 V/m

**Hearing Aid Near-Field Category: M2 (AWF 0 dB)**

E in V/m (Time averaged)    E in V/m (Slot averaged)

Grid 1	Grid 2	Grid 3	Grid 1	Grid 2	Grid 3
175.9	175.1	151.1	175.9	175.1	151.1
Grid 4	Grid 5	Grid 6	Grid 4	Grid 5	Grid 6
86.8	86.3	74.7	86.8	86.3	74.7
Grid 7	Grid 8	Grid 9	Grid 7	Grid 8	Grid 9
174.6	174.0	150.0	174.6	174.0	150.0

Category	AWF (dB)	Limits for E-Field Emissions (V/m)	Limits for H-Field Emissions (A/m)
M1	0	199.5 - 354.8	0.6 - 1.07
	-5	149.6 - 266.1	0.45 - 0.8
M2	0	112.2 - 199.5	0.34 - 0.6
	-5	84.1 - 149.6	0.25 - 0.45
M3	0	63.1 - 112.2	0.19 - 0.34
	-5	47.3 - 84.1	0.15 - 0.25
M4	0	<63.1	<0.19
	-5	<47.3	<0.15



0 dB = 175.9V/m

Test Laboratory: Compliance Certification Services

**HAC\_E\_Dipole 1880 MHz\_CDMA Signal\_072605**

**DUT: HAC Dipole 1880 MHz; Type: CD1880V3; Serial: 1010**

Communication System: CDMA PCS Band; Frequency: 1880 MHz; Duty Cycle: 1:1  
 Medium parameters used:  $\sigma = 0$  mho/m,  $\epsilon_r = 1$ ;  $\rho = 1000$  kg/m<sup>3</sup>  
 Phantom section: E Dipole Section  
 Measurement Standard: DAS4 (High Precision Assessment)

DASY4 Configuration:

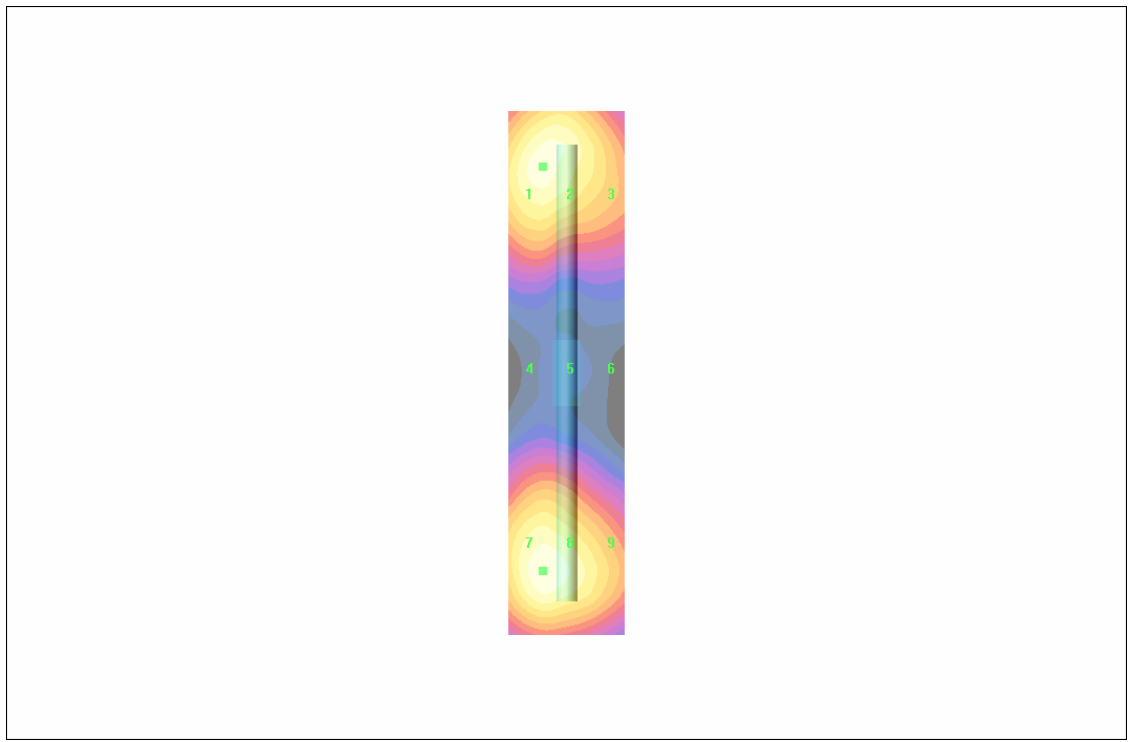
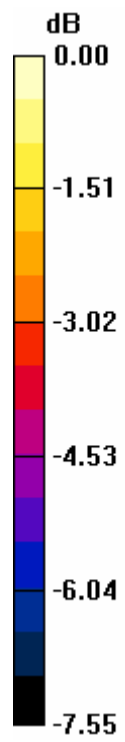
- Probe: ER3DV6 - SN2339; ConvF(1, 1, 1); Calibrated: 3/11/2005
- Sensor-Surface: (Fix Surface)
- Electronics: DAE3 Sn500; Calibrated: 2/7/2005
- Phantom: HAC Test Arch; Type: SD HAC P01 BA;
- Measurement SW: DAS4, V4.5 Build 19;

**E Scan - ER probe center 10mm above CD1880 Dipole/Hearing Aid Compatibility Test (41x181x1):**

Measurement grid: dx=5mm, dy=5mm  
 Maximum value of Total field (slot averaged) = 137.2 V/m  
**Hearing Aid Near-Field Category: M2 (AWF 0 dB)**

E in V/m (Time averaged)			E in V/m (Slot averaged)		
Grid 1	Grid 2	Grid 3	Grid 1	Grid 2	Grid 3
<b>135.2</b>	<b>134.8</b>	<b>119.5</b>	<b>135.2</b>	<b>134.8</b>	<b>119.5</b>
Grid 4	Grid 5	Grid 6	Grid 4	Grid 5	Grid 6
<b>82.8</b>	<b>82.8</b>	<b>74.0</b>	<b>82.8</b>	<b>82.8</b>	<b>74.0</b>
Grid 7	Grid 8	Grid 9	Grid 7	Grid 8	Grid 9
<b>137.2</b>	<b>137.2</b>	<b>121.4</b>	<b>137.2</b>	<b>137.2</b>	<b>121.4</b>

Category	AWF (dB)	Limits for E-Field Emissions (V/m)	Limits for H-Field Emissions (A/m)
M1	0	199.5 - 354.8	0.6 - 1.07
	-5	149.6 - 266.1	0.45 - 0.8
M2	0	112.2 - 199.5	0.34 - 0.6
	-5	84.1 - 149.6	0.25 - 0.45
M3	0	63.1 - 112.2	0.19 - 0.34
	-5	47.3 - 84.1	0.15 - 0.25
M4	0	<63.1	<0.19
	-5	<47.3	<0.15



0 dB = 137.2V/m

Test Laboratory: Compliance Certification Services

### HAC\_H\_Dipole 835 MHz\_CDMA Signal\_072505

**DUT: HAC-Dipole 835 MHz; Type: D835V3; Serial: 1014**

Communication System: CDMA Cell Band; Frequency: 835.02 MHz; Duty Cycle: 1:1

Medium parameters used:  $\sigma = 0$  mho/m,  $\epsilon_r = 1$ ;  $\rho = 1$  kg/m<sup>3</sup>

Phantom section: H Dipole Section

Measurement Standard: DAS4 (High Precision Assessment)

DASY4 Configuration:

- Probe: H3DV6 - SN6157; ; Calibrated: 3/11/2005
- Sensor-Surface: (Fix Surface)
- Electronics: DAE3 Sn500; Calibrated: 2/7/2005
- Phantom: HAC Test Arch; Type: SD HAC P01 BA; Serial: 1011
- Measurement SW: DAS4, V4.5 Build 19; Postprocessing SW: SEMCAD, V1.8 Build 146

**H Scan - H3DV6 probe center 10mm above CD835 Dipole 2/Hearing Aid Compatibility Test (41x361x1):** Measurement grid: dx=5mm, dy=5mm

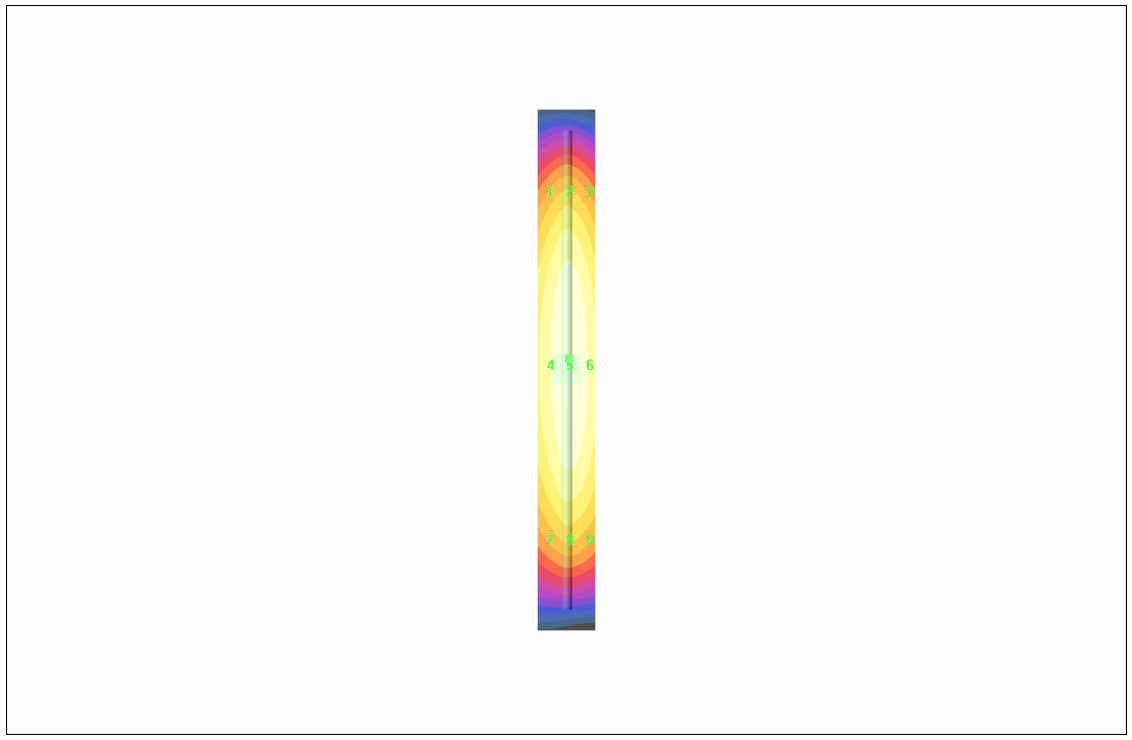
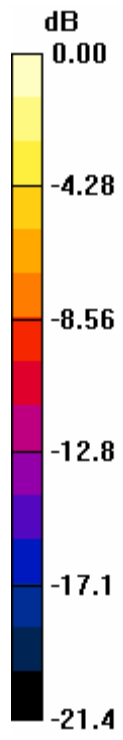
Maximum value of Total field (slot averaged) = 0.488 A/m

**Hearing Aid Near-Field Category: M2 (AWF 0 dB)**

H in A/m (Time averaged)      H in A/m (Slot averaged)

Grid 1	Grid 2	Grid 3	Grid 1	Grid 2	Grid 3
<b>0.402</b>	<b>0.448</b>	<b>0.428</b>	<b>0.402</b>	<b>0.448</b>	<b>0.428</b>
Grid 4	Grid 5	Grid 6	Grid 4	Grid 5	Grid 6
<b>0.436</b>	<b>0.488</b>	<b>0.470</b>	<b>0.436</b>	<b>0.488</b>	<b>0.470</b>
Grid 7	Grid 8	Grid 9	Grid 7	Grid 8	Grid 9
<b>0.390</b>	<b>0.436</b>	<b>0.421</b>	<b>0.390</b>	<b>0.436</b>	<b>0.421</b>

Category	AWF (dB)	Limits for E-Field Emissions (V/m)	Limits for H-Field Emissions (A/m)
M1	0	199.5 - 354.8	0.6 - 1.07
	-5	149.6 - 266.1	0.45 - 0.8
M2	0	112.2 - 199.5	0.34 - 0.6
	-5	84.1 - 149.6	0.25 - 0.45
M3	0	63.1 - 112.2	0.19 - 0.34
	-5	47.3 - 84.1	0.15 - 0.25
M4	0	<63.1	<0.19
	-5	<47.3	<0.15



0 dB = 0.488A/m

Test Laboratory: Compliance Certification Services

**HAC\_H-Dipole 1880 MHz\_CDMA Signal\_072605**

**DUT: HAC Dipole 1880 MHz; Type: CD1880V3; Serial: 1010**

Communication System: CDMA PCS Band; Frequency: 1880 MHz; Duty Cycle: 1:1  
 Medium parameters used:  $\sigma = 0$  mho/m,  $\epsilon_r = 1$ ;  $\rho = 1$  kg/m<sup>3</sup>  
 Phantom section: H Dipole Section  
 Measurement Standard: DASYS4 (High Precision Assessment)

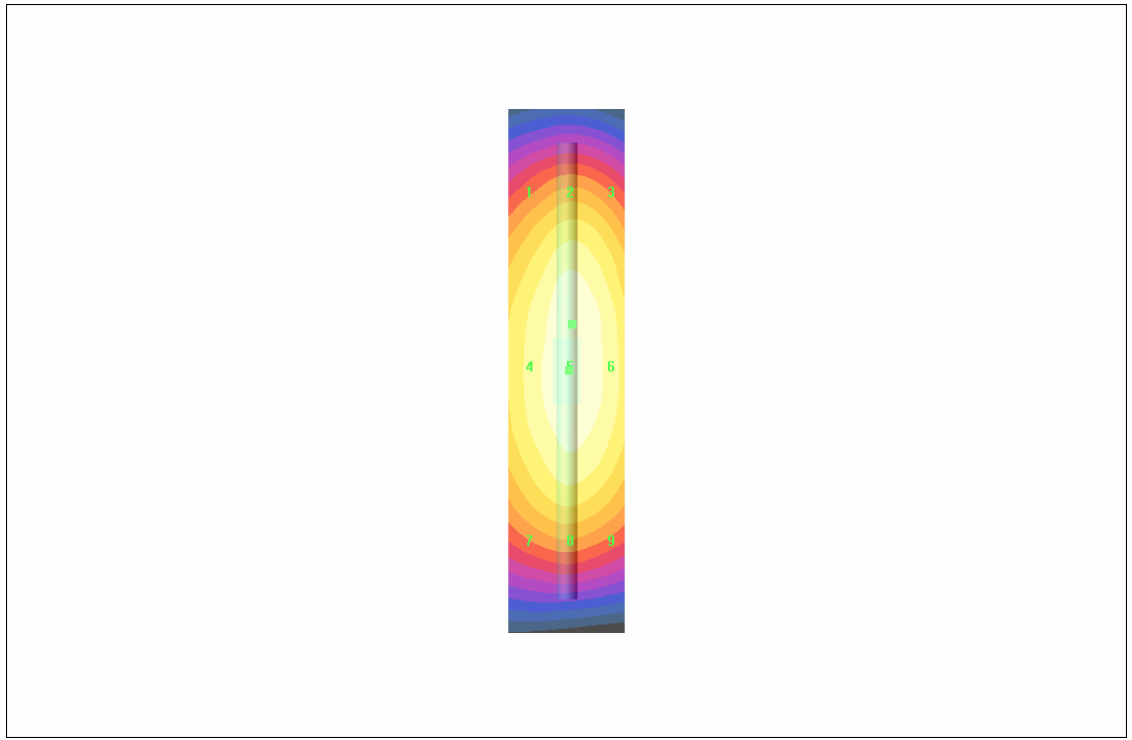
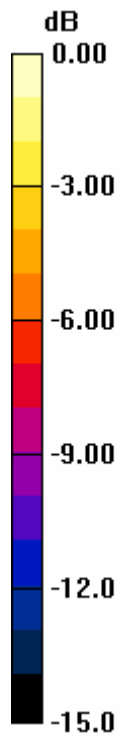
DASY4 Configuration:

- Probe: H3DV6 - SN6157; ; Calibrated: 3/11/2005
- Sensor-Surface: (Fix Surface)
- Electronics: DAE3 Sn500; Calibrated: 2/7/2005
- Phantom: HAC Test Arch; Type: SD HAC P01 BA; Serial: 1011
- Measurement SW: DASYS4, V4.5 Build 19; Postprocessing SW: SEMCAD, V1.8 Build 146

**H Scan - H3DV6 probe center 10mm above CD1880 Dipole/Hearing Aid Compatibility Test (41x181x1):** Measurement grid: dx=5mm, dy=5mm  
 Maximum value of Total field (slot averaged) = 0.484 A/m  
**Hearing Aid Near-Field Category: M2 (AWF 0 dB)**

H in A/m (Time averaged)			H in A/m (Slot averaged)		
Grid 1	Grid 2	Grid 3	Grid 1	Grid 2	Grid 3
<b>0.392</b>	<b>0.447</b>	<b>0.428</b>	<b>0.392</b>	<b>0.447</b>	<b>0.428</b>
Grid 4	Grid 5	Grid 6	Grid 4	Grid 5	Grid 6
<b>0.435</b>	<b>0.484</b>	<b>0.465</b>	<b>0.435</b>	<b>0.484</b>	<b>0.465</b>
Grid 7	Grid 8	Grid 9	Grid 7	Grid 8	Grid 9
<b>0.386</b>	<b>0.425</b>	<b>0.412</b>	<b>0.386</b>	<b>0.425</b>	<b>0.412</b>

Category	AWF (dB)	Limits for E-Field Emissions (V/m)	Limits for H-Field Emissions (A/m)
M1	0	199.5 - 354.8	0.6 - 1.07
	-5	149.6 - 266.1	0.45 - 0.8
M2	0	112.2 - 199.5	0.34 - 0.6
	-5	84.1 - 149.6	0.25 - 0.45
M3	0	63.1 - 112.2	0.19 - 0.34
	-5	47.3 - 84.1	0.15 - 0.25
M4	0	<63.1	<0.19
	-5	<47.3	<0.15



0 dB = 0.484A/m