

Appendix B2:
SAR Distribution Plots (Body)

Test Laboratory: Kyocera

KX21 #Y63V AMPS ch383 Flat with 25mm Air Space

Communication System: AMPS, Frequency: 836.49 MHz, Duty Cycle: 1:1

Medium: M900, Medium parameters used (interpolated): $f = 836.49$ MHz; $\sigma = 0.936$ mho/m; $\epsilon_r = 54.4$; $\rho = 1000$ kg/m³

Phantom: SAM 12, Phantom section: Flat Section

DASY4 Configuration:

Probe: ES3DV2 - SN3036, ConvF(5.85, 5.85, 5.85), Calibrated: 10/25/2005

Sensor-Surface: 4mm (Mechanical Surface Detection),

Electronics: DAE4 Sn530, Calibrated: 1/4/2005

Measurement SW: DASY4, V4.4 Build 3

Postprocessing SW: SEMCAD, V1.8 Build 159

Temperature:

Room T = 21.8 +/- 1 deg C, Liquid T = 22.0 +/- 1 deg C

AMPS Ch383 FLAT/Zoom Scan (7x7x7)/Cube 0: Measurement grid: dx=5mm, dy=5mm, dz=5mm

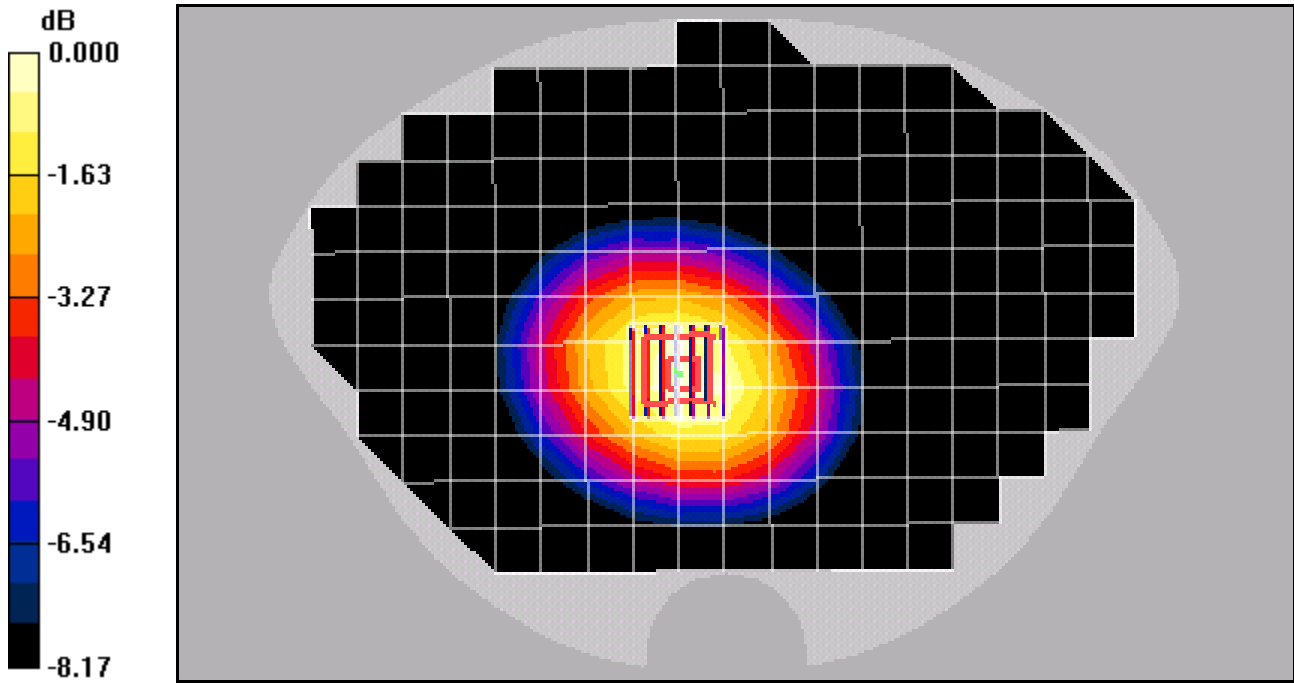
Reference Value = 22.0 V/m; Power Drift = 0.087 dB

Peak SAR (extrapolated) = 0.710 W/kg

SAR(1 g) = 0.540 mW/g; SAR(10 g) = 0.398 mW/g

[Info: Interpolated medium parameters used for SAR evaluation.](#)

Maximum value of SAR (measured) = 0.569 mW/g



Test Laboratory: Kyocera

KX21 #Y63V AMPS ch383 Flat with Black Pouch

Communication System: AMPS, Frequency: 836.49 MHz, Duty Cycle: 1:1

Medium: M900, Medium parameters used (interpolated): $f = 836.49$ MHz; $\sigma = 0.936$ mho/m; $\epsilon_r = 54.4$; $\rho = 1000$ kg/m³

Phantom: SAM 12, Phantom section: Flat Section

DASY4 Configuration:

Probe: ES3DV2 - SN3036, ConvF(5.85, 5.85, 5.85), Calibrated: 10/25/2005

Sensor-Surface: 4mm (Mechanical Surface Detection),

Electronics: DAE4 Sn530, Calibrated: 1/4/2005

Measurement SW: DASY4, V4.4 Build 3

Postprocessing SW: SEMCAD, V1.8 Build 159

Temperature:

Room T = 21.8 +/- 1 deg C, Liquid T = 22.0 +/- 1 deg C

AMPS Ch383 FLAT/Zoom Scan (7x7x7)/Cube 0: Measurement grid: dx=5mm, dy=5mm, dz=5mm

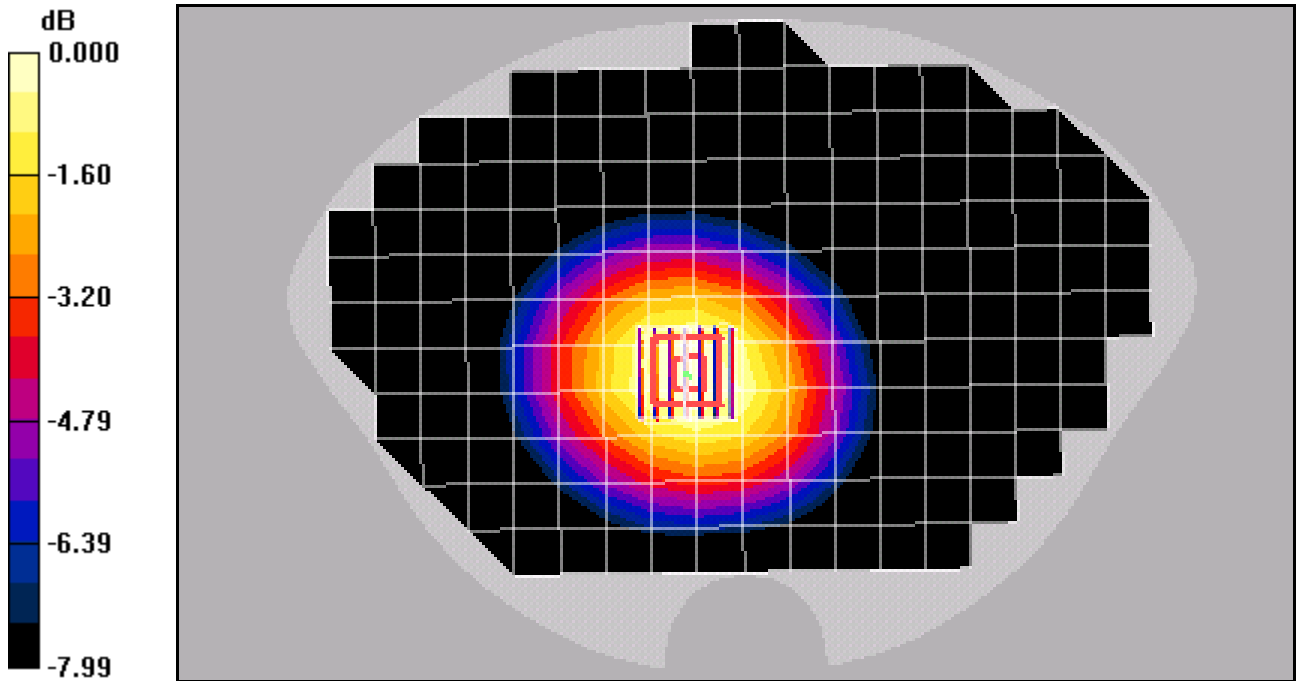
Reference Value = 22.0 V/m; Power Drift = -0.003 dB

Peak SAR (extrapolated) = 0.613 W/kg

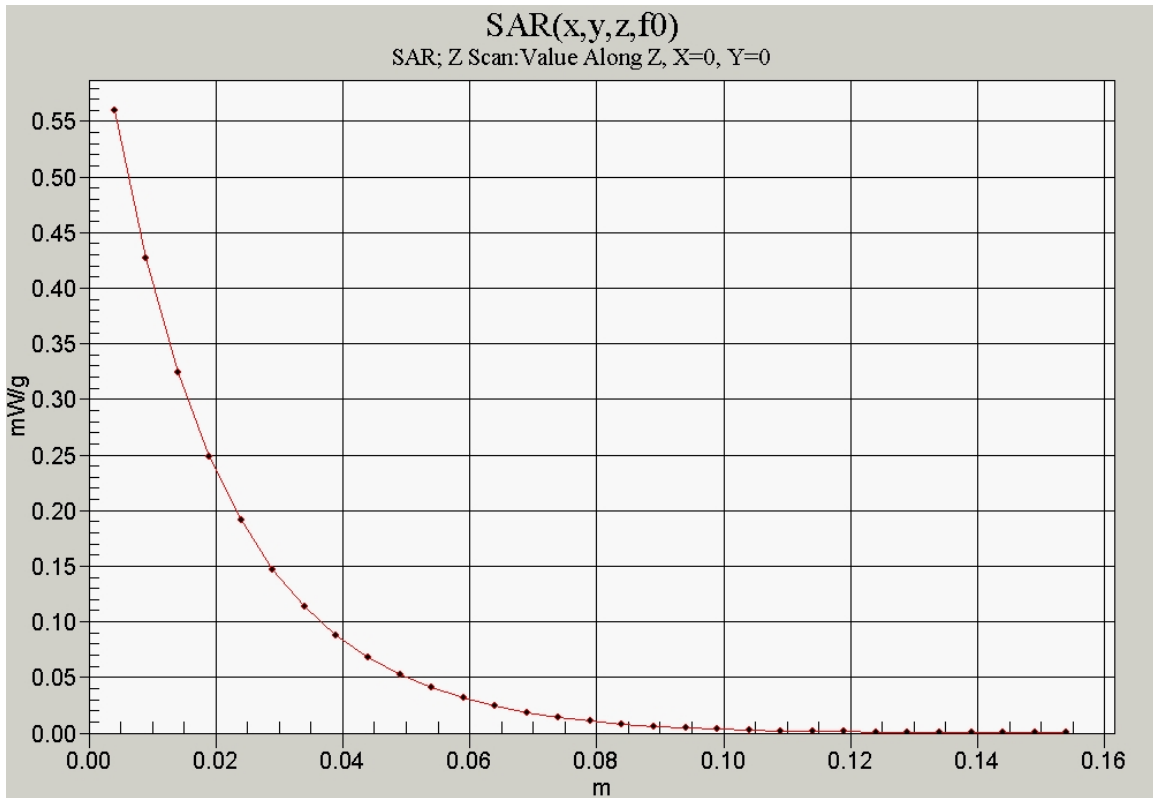
SAR(1 g) = 0.480 mW/g; SAR(10 g) = 0.356 mW/g

[Info: Interpolated medium parameters used for SAR evaluation.](#)

Maximum value of SAR (measured) = 0.507 mW/g



0 dB = 0.507mW/g



Test Laboratory: Kyocera

KX21 #Y63V CDMA-800 ch383 Flat with 25mm Air Space

Communication System: CDMA-800, Frequency: 836.49 MHz, Duty Cycle: 1:1

Medium: M900, Medium parameters used (interpolated): $f = 836.49$ MHz; $\sigma = 0.936$ mho/m; $\epsilon_r = 54.4$; $\rho = 1000$ kg/m³

Phantom: SAM 12, Phantom section: Flat Section

DASY4 Configuration:

Probe: ES3DV2 - SN3036, ConvF(5.85, 5.85, 5.85), Calibrated: 10/25/2005

Sensor-Surface: 4mm (Mechanical Surface Detection),

Electronics: DAE4 Sn530, Calibrated: 1/4/2005

Measurement SW: DASY4, V4.4 Build 3

Postprocessing SW: SEMCAD, V1.8 Build 159

Temperature:

Room T = 21.8 +/- 1 deg C, Liquid T = 22.0 +/- 1 deg C

CDMA-800 Ch383 FLAT/Zoom Scan (7x7x7)/Cube 0: Measurement grid: dx=5mm, dy=5mm, dz=5mm

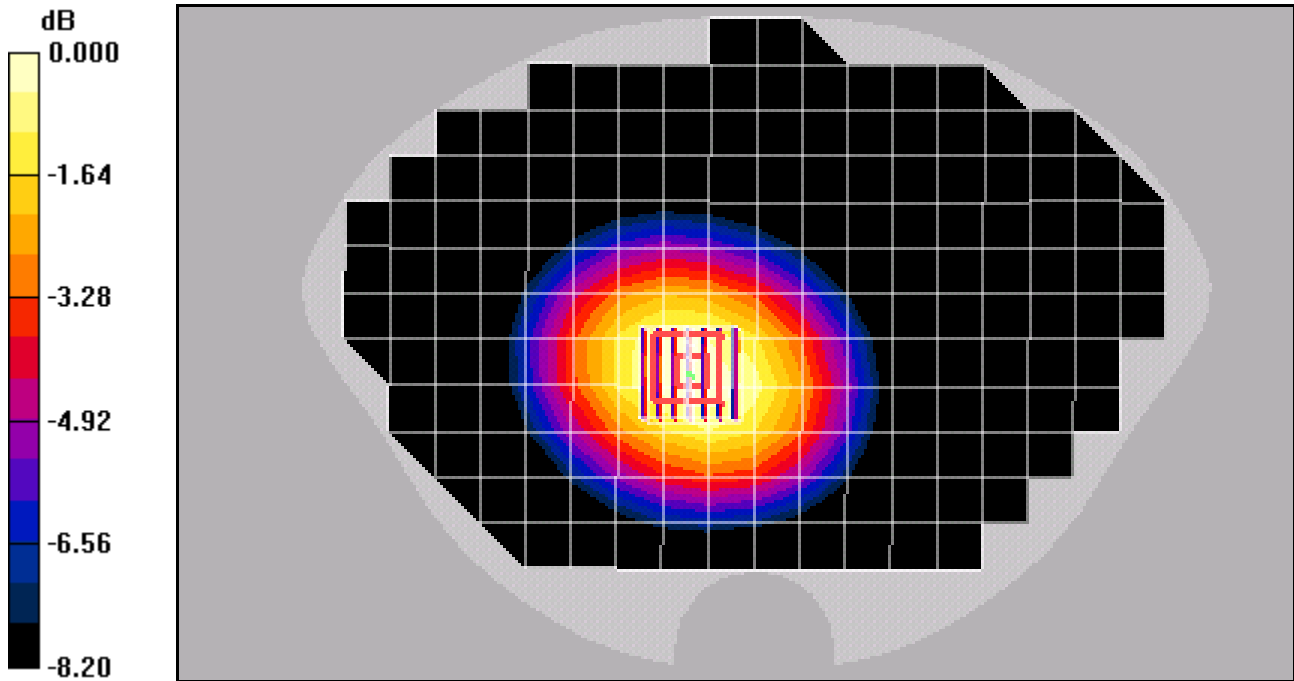
Reference Value = 21.1 V/m; Power Drift = -0.024 dB

Peak SAR (extrapolated) = 0.707 W/kg

SAR(1 g) = 0.545 mW/g; SAR(10 g) = 0.401 mW/g

[Info: Interpolated medium parameters used for SAR evaluation.](#)

Maximum value of SAR (measured) = 0.577 mW/g



0 dB = 0.577mW/g

Test Laboratory: Kyocera

KX21 #Y63V CDMA-800 ch383 Flat with Black Pouch

Communication System: CDMA-800, Frequency: 836.49 MHz, Duty Cycle: 1:1

Medium: M900,Medium parameters used (interpolated): $f = 836.49$ MHz; $\sigma = 0.936$ mho/m; $\epsilon_r = 54.4$; $\rho = 1000$ kg/m³

Phantom: SAM 12,Phantom section: Flat Section

DASY4 Configuration:

Probe: ES3DV2 - SN3036, ConvF(5.85, 5.85, 5.85), Calibrated: 10/25/2005

Sensor-Surface: 4mm (Mechanical Surface Detection),

Electronics: DAE4 Sn530,Calibrated: 1/4/2005

Measurement SW: DASY4, V4.4 Build 3

Postprocessing SW: SEMCAD, V1.8 Build 159

Temperature:

Room T = 21.8 +/- 1 deg C, Liquid T = 22.0 +/- 1 deg C

CDMA-800 Ch383 FLAT/Zoom Scan (7x7x7)/Cube 0: Measurement grid: dx=5mm, dy=5mm, dz=5mm

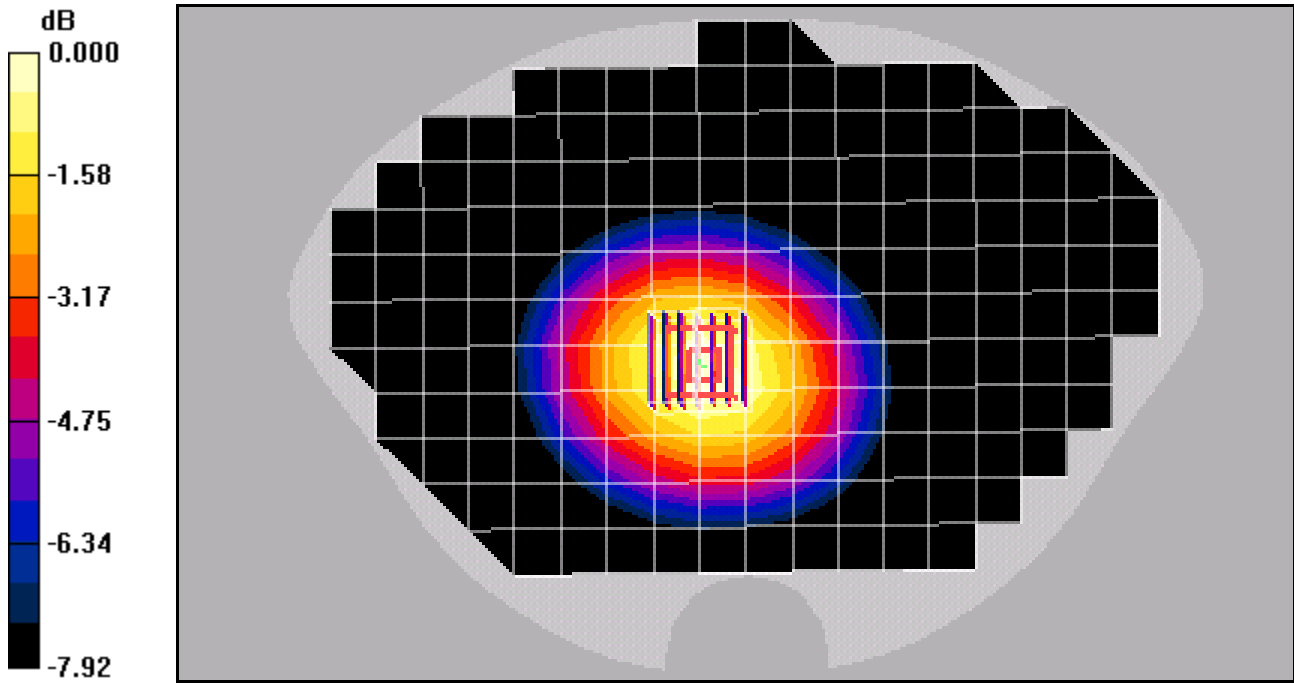
Reference Value = 21.5 V/m; Power Drift = -0.134 dB

Peak SAR (extrapolated) = 0.606 W/kg

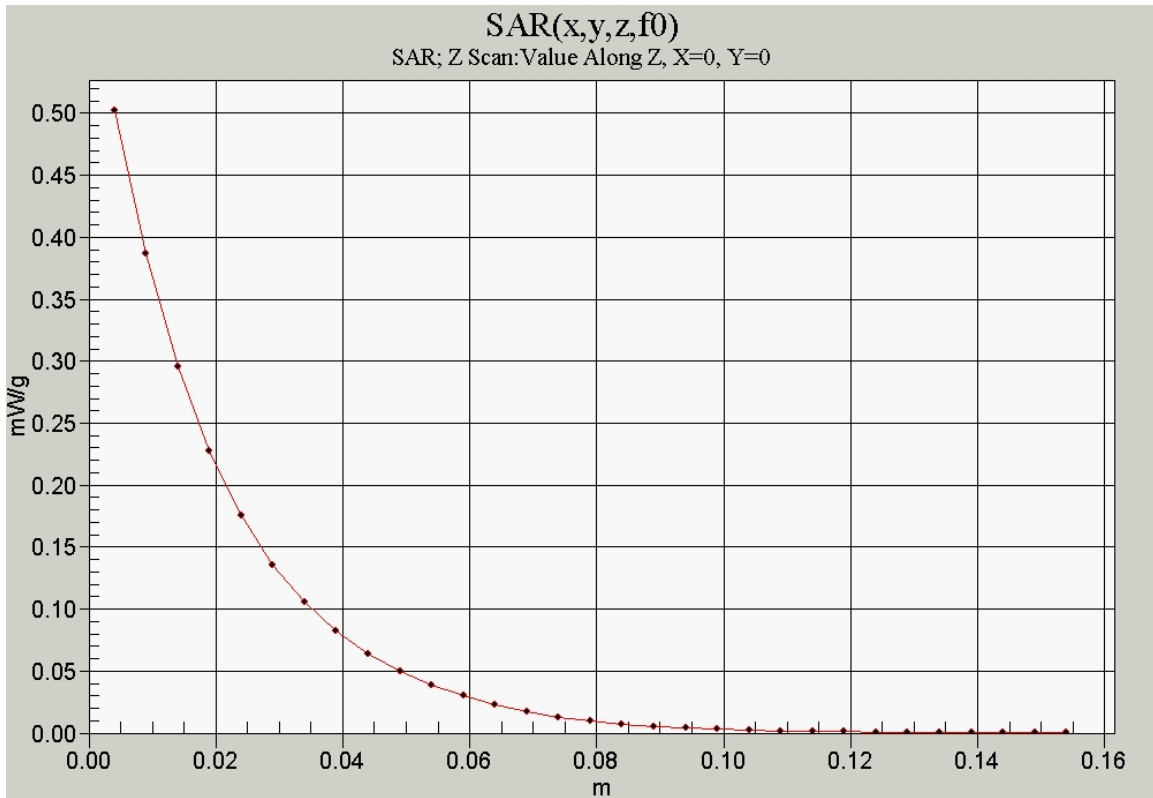
SAR(1 g) = 0.471 mW/g; SAR(10 g) = 0.349 mW/g

[Info: Interpolated medium parameters used for SAR evaluation.](#)

Maximum value of SAR (measured) = 0.502 mW/g



0 dB = 0.502mW/g



Test Laboratory: Kyocera

KX21 #Y63V PCS ch600 Flat with 25mm Air Space

Communication System: CDMA-1900, Frequency: 1880 MHz, Duty Cycle: 1:1

Medium: M1800, Medium parameters used: $f = 1880$ MHz; $\sigma = 1.52$ mho/m; $\epsilon_r = 54.5$; $\rho = 1000$ kg/m³

Phantom: SAM 12, Phantom section: Flat Section

DASY4 Configuration:

Probe: ES3DV2 - SN3036, ConvF(4.48, 4.48, 4.48), Calibrated: 10/25/2005

Sensor-Surface: 4mm (Mechanical Surface Detection),

Electronics: DAE4 Sn530, Calibrated: 1/4/2005

Measurement SW: DASY4, V4.4 Build 3

Postprocessing SW: SEMCAD, V1.8 Build 159

Temperature:

Room T = 21.8 +/- 1 deg C, Liquid T = 22.0 +/- 1 deg C

PCS Ch600 FLAT/Zoom Scan (7x7x7)/Cube 0: Measurement grid: dx=5mm, dy=5mm, dz=5mm

Reference Value = 11.5 V/m; Power Drift = 0.018 dB

Peak SAR (extrapolated) = 0.256 W/kg

SAR(1 g) = 0.173 mW/g; SAR(10 g) = 0.111 mW/g

Maximum value of SAR (measured) = 0.188 mW/g

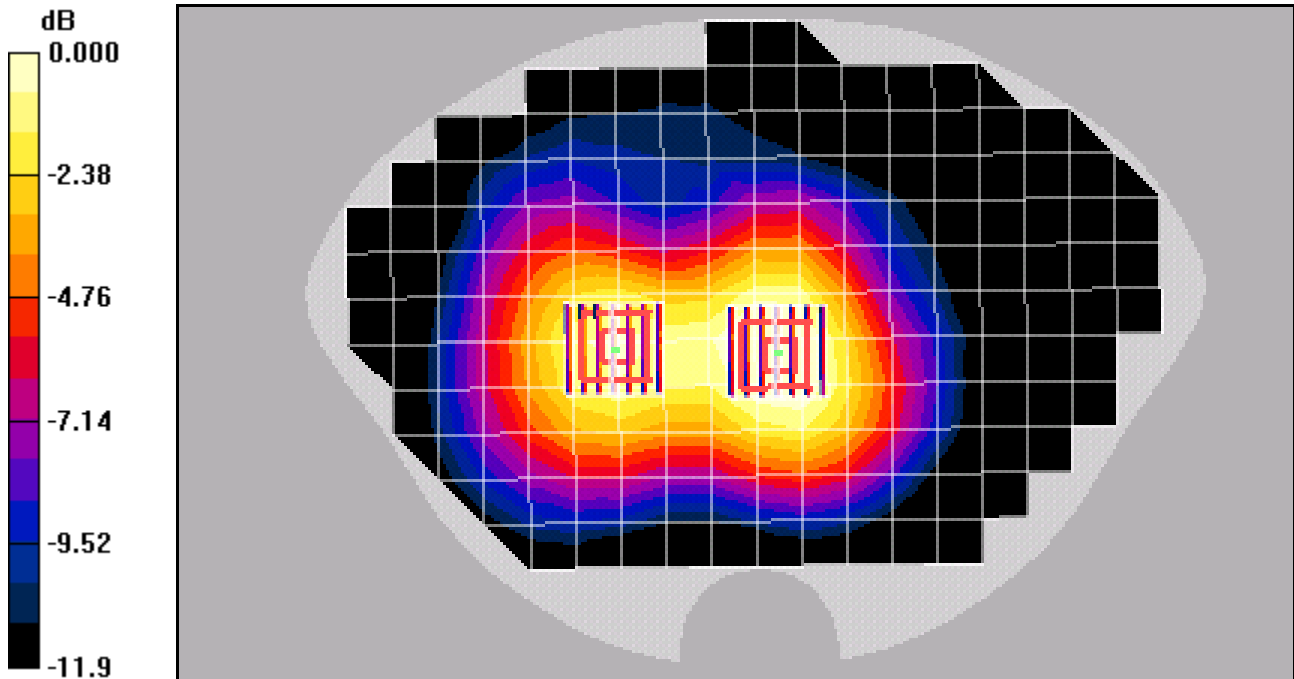
PCS Ch600 FLAT/Zoom Scan (7x7x7)/Cube 1: Measurement grid: dx=5mm, dy=5mm, dz=5mm

Reference Value = 11.5 V/m; Power Drift = 0.018 dB

Peak SAR (extrapolated) = 0.224 W/kg

SAR(1 g) = 0.157 mW/g; SAR(10 g) = 0.105 mW/g

Maximum value of SAR (measured) = 0.168 mW/g



0 dB = 0.168mW/g

Test Laboratory: Kyocera

KX21 #Y63V PCS ch600 Flat with Black Pouch

Communication System: CDMA-1900, Frequency: 1880 MHz, Duty Cycle: 1:1

Medium: M1800, Medium parameters used: $f = 1880$ MHz; $\sigma = 1.52$ mho/m; $\epsilon_r = 54.5$; $\rho = 1000$ kg/m³

Phantom: SAM 12, Phantom section: Flat Section

DASY4 Configuration:

Probe: ES3DV2 - SN3036, ConvF(4.48, 4.48, 4.48), Calibrated: 10/25/2005

Sensor-Surface: 4mm (Mechanical Surface Detection),

Electronics: DAE4 Sn530, Calibrated: 1/4/2005

Measurement SW: DASY4, V4.4 Build 3

Postprocessing SW: SEMCAD, V1.8 Build 159

Temperature:

Room T = 21.8 +/- 1 deg C, Liquid T = 22.0 +/- 1 deg C

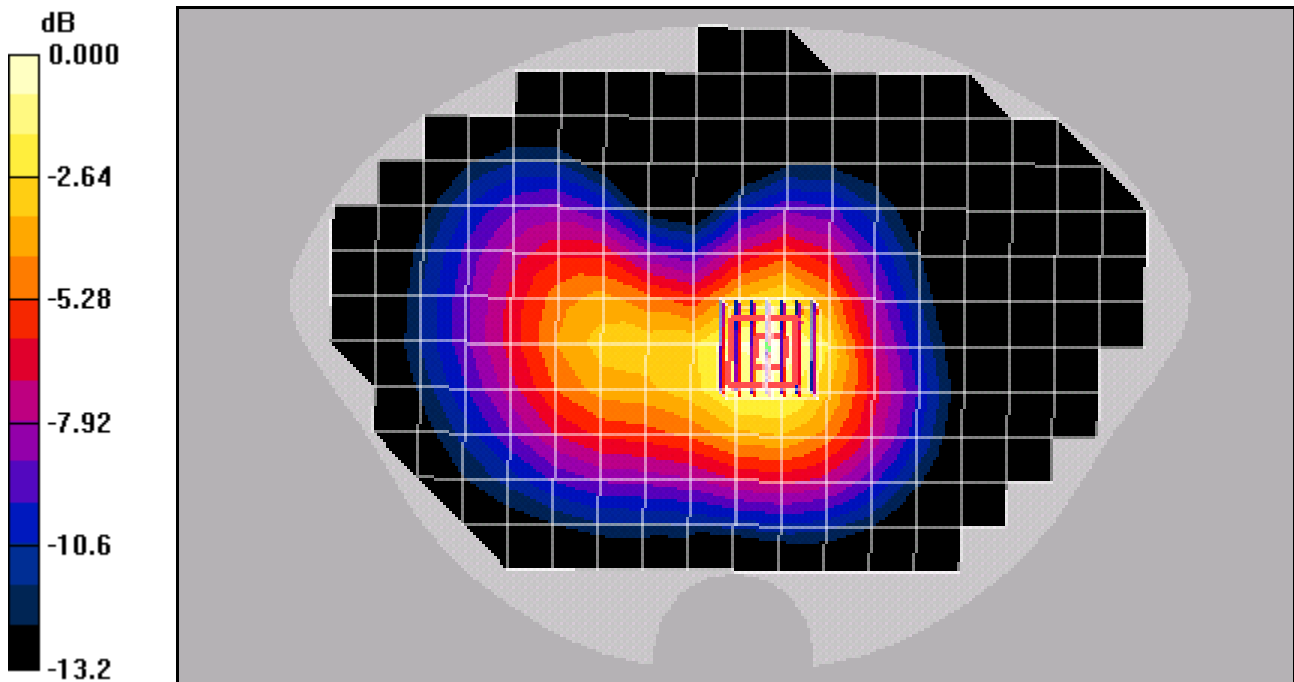
PCS Ch600 FLAT/Zoom Scan (7x7x7)/Cube 0: Measurement grid: dx=5mm, dy=5mm, dz=5mm

Reference Value = 12.7 V/m; Power Drift = -0.111 dB

Peak SAR (extrapolated) = 0.373 W/kg

SAR(1 g) = 0.258 mW/g; SAR(10 g) = 0.164 mW/g

Maximum value of SAR (measured) = 0.279 mW/g



0 dB = 0.279mW/g

