

APPENDIX C_1:
Dipole Calibration Parameters

Schmid & Partner Engineering AG

Zeughausstrasse 43, 8004 Zurich, Switzerland, Phone +41 1 245 97 00, Fax +41 1 245 97 79

Calibration Certificate

1900 MHz System Validation Dipole

Type:

D1900V2

Serial Number:

5d003

asset #
039924

Place of Calibration:

Zurich

Date of Calibration:

February 20, 2002

Calibration Interval:

24 months

Schmid & Partner Engineering AG hereby certifies, that this device has been calibrated on the date indicated above. The calibration was performed in accordance with specifications and procedures of Schmid & Partner Engineering AG.

Wherever applicable, the standards used in the calibration process are traceable to international standards. In all other cases the standards of the Laboratory for EMF and Microwave Electronics at the Swiss Federal Institute of Technology (ETH) in Zurich, Switzerland have been applied.

Calibrated by:

Viktor Nico

Approved by:

Alain Käfer

DASY3

Dipole Validation Kit

Type: D1900V2

Serial: 5d003

Manufactured: February 14, 2002

Calibrated: February 20, 2002

1. Measurement Conditions

The measurements were performed in the flat section of the new generic twin phantom filled with brain simulating sugar solution of the following electrical parameters at 1900 MHz:

Relative permittivity	39.1	$\pm 5\%$
Conductivity	1.47 mho/m	$\pm 10\%$

The DASY3 System (Software version 3.1d) with a dosimetric E-field probe ET3DV6 (SN:1507, conversion factor 5.3) was used for the measurements.

The dipole feedpoint was positioned below the center marking and oriented parallel to the body axis (the long side of the phantom). The standard measuring distance was 10mm from dipole center to the solution surface. The included distance holder was used during measurements for accurate distance positioning.

The coarse grid with a grid spacing of 20mm was aligned with the dipole. The 5x5x7 fine cube was chosen for cube integration. Probe isotropy errors were cancelled by measuring the SAR with normal and 90° turned probe orientations and averaging.

The dipole input power (forward power) was 250mW $\pm 3\%$. The results are normalized to 1W input power.

2. SAR Measurement

Standard SAR-measurements were performed with the head phantom according to the measurement conditions described in section 1. The results (see figure) have been normalized to a dipole input power of 1W (forward power). The resulting averaged SAR-values are:

averaged over 1 cm³ (1 g) of tissue: **45.6 mW/g**

averaged over 10 cm³ (10 g) of tissue: **23.0 mW/g**

Note: If the liquid parameters for validation are slightly different from the ones used for initial calibration, the SAR-values will be different as well. The estimated sensitivities of SAR-values and penetration depths to the liquid parameters are listed in the DASY Application Note 4: ‘SAR Sensitivities’.

3. Dipole Impedance and Return Loss

The impedance was measured at the SMA-connector with a network analyzer and numerically transformed to the dipole feedpoint. The transformation parameters from the SMA-connector to the dipole feedpoint are:

Electrical delay:	1.185 ns	(one direction)
Transmission factor:	0.993	(voltage transmission, one direction)

The dipole was positioned at the flat phantom sections according to section 1 and the distance holder was in place during impedance measurements.

Feedpoint impedance at 1900 MHz:	$\text{Re}\{Z\} = 51.2 \Omega$
----------------------------------	--------------------------------

	$\text{Im}\{Z\} = 0.9 \Omega$
--	-------------------------------

Return Loss at 1900 MHz	- 36.7 dB
-------------------------	------------------

4. Handling

Do not apply excessive force to the dipole arms, because they might bend. Bending of the dipole arms stresses the soldered connections near the feedpoint leading to a damage of the dipole.

Small end caps have been added to the dipole arms in order to improve matching when loaded according to the position as explained in Section 1. The SAR data are not affected by this change. The overall dipole length is still according to the Standard.

5. Design

The dipole is made of standard semirigid coaxial cable. The center conductor of the feeding line is directly connected to the second arm of the dipole. The antenna is therefore short-circuited for DC-signals.

6. Power Test

After long term use with 40W radiated power, only a slight warming of the dipole near the feedpoint can be measured.

CH1 S11 1 U FS

1: 51.166 Ω 0.9121 Ω 76.403 pF

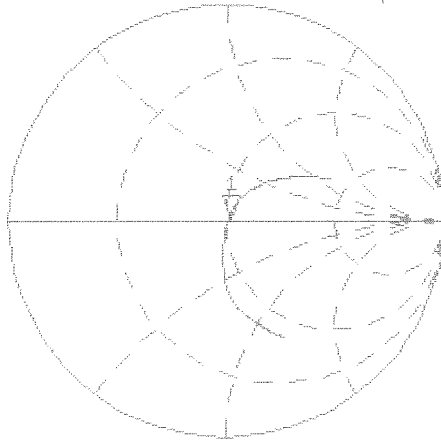
1 900.000 000 MHz

Del

Cor

Avg
16

↑

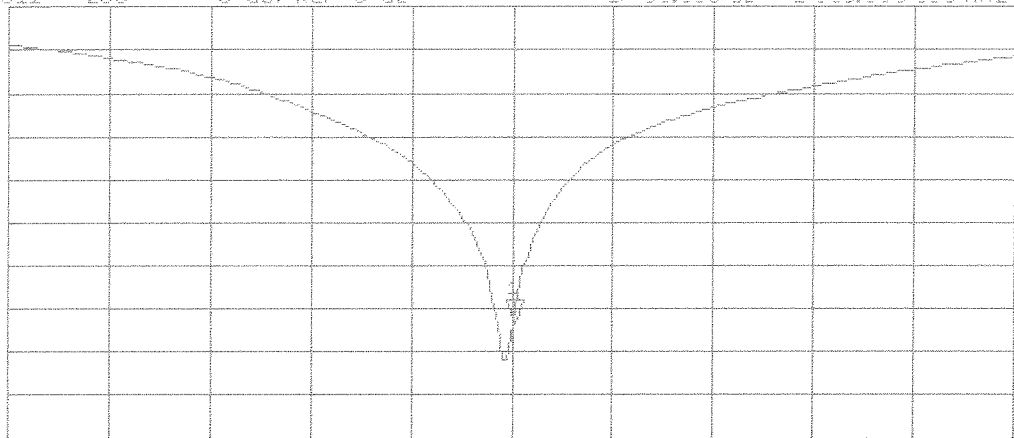


CH2 S11 LOG 5 dB/REF 0 dB 1: -36.665 dB 1 900.000 000 MHz

Cor

Avg
16

↑

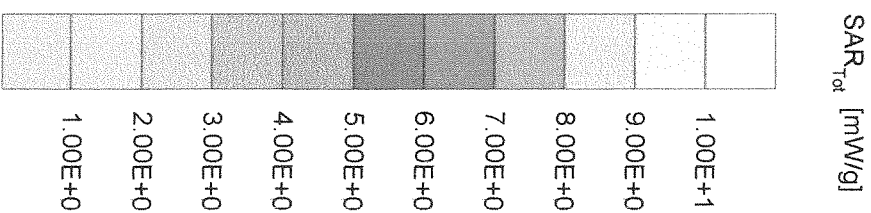
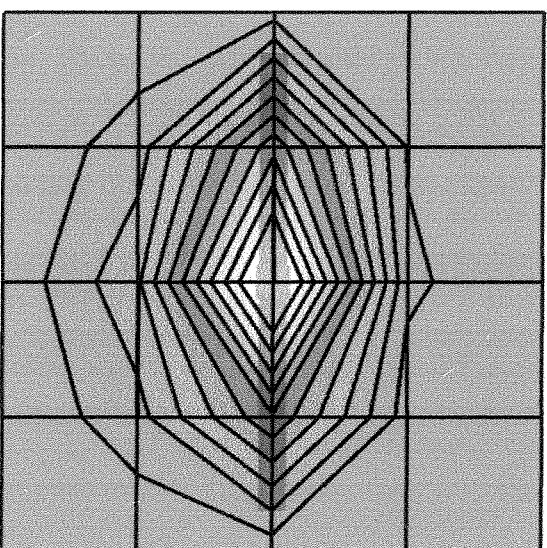


START 1 500.000 000 MHz

STOP 2 200.000 000 MHz

Validation Dipole D1900V2 SN:5d003, d = 10 mm

Frequency: 1900 MHz; Antenna Input Power: 250 [mW]
 SAM Phantom: Flat Section; Grid Spacing: Dx = 20.0, Dy = 20.0, Dz = 10.0
 Probe: ET3DV6 - SN1507; ConvF(5.30,5.30,5.30) at 1800 MHz; IEEE1528 1900 MHz; $\sigma = 1.47$ mho/m $\epsilon_r = 39.1$ $\rho = 1.00$ g/cm³
 Cubes (2): Peak: 22.0 mW/g \pm 0.06 dB, SAR (1g): 11.4 mW/g \pm 0.01 dB, SAR (10g): 5.76 mW/g \pm 0.03 dB, (Worst-case extrapolation)
 Penetration depth: 7.9 (7.5, 8.8) [mm]
 Powerdrift: -0.04 dB



Schmid & Partner Engineering AG

Zeughausstrasse 43, 8004 Zurich, Switzerland, Phone +41 1 245 97 00, Fax +41 1 245 97 79

Calibration Certificate

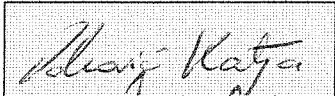

835 MHz System Validation Dipole

Type:	D835V2
Serial Number:	453
Place of Calibration:	Zurich
Date of Calibration:	February 11, 2002
Calibration Interval:	24 months

asset #
039931

Schmid & Partner Engineering AG hereby certifies, that this device has been calibrated on the date indicated above. The calibration was performed in accordance with specifications and procedures of Schmid & Partner Engineering AG.

Wherever applicable, the standards used in the calibration process are traceable to international standards. In all other cases the standards of the Laboratory for EMF and Microwave Electronics at the Swiss Federal Institute of Technology (ETH) in Zurich, Switzerland have been applied.

Calibrated by:	
Approved by:	

DASY

Dipole Validation Kit

Type: D835V2

Serial: 453

Manufactured: January 31, 2002
Calibrated: February 11, 2002

1. Measurement Conditions

The measurements were performed in the flat section of the SAM twin phantom filled with head simulating solution of the following electrical parameters at 835 MHz:

Relative Dielectricity	41.9	$\pm 5\%$
Conductivity	0.89 mho/m	$\pm 5\%$

The DASY3 System (Software version 3.1c) with a dosimetric E-field probe ET3DV6 (SN:1507, Conversion factor 6.5 at 900 MHz) was used for the measurements.

The dipole was mounted on the small tripod so that the dipole feedpoint was positioned below the center marking of the flat phantom section and the dipole was oriented parallel to the body axis (the long side of the phantom). The standard measuring distance was 15mm from dipole center to the solution surface. The included distance holder was used during measurements for accurate distance positioning.

The coarse grid with a grid spacing of 20mm was aligned with the dipole. The 5x5x7 fine cube was chosen for cube integration. Probe isotropy errors were cancelled by measuring the SAR with normal and 90° turned probe orientations and averaging.

The dipole input power (forward power) was 250mW $\pm 3\%$. The results are normalized to 1W input power.

2. SAR Measurement

Standard SAR-measurements were performed with the phantom according to the measurement conditions described in section 1. The results have been normalized to a dipole input power of 1W (forward power). The resulting averaged SAR-values are:

averaged over 1 cm ³ (1 g) of tissue:	10.4 mW/g
averaged over 10 cm ³ (10 g) of tissue:	6.64 mW/g

Note: If the liquid parameters for validation are slightly different from the ones used for initial calibration, the SAR-values will be different as well.

3. Dipole Impedance and Return Loss

The impedance was measured at the SMA-connector with a network analyzer and numerically transformed to the dipole feedpoint. The transformation parameters from the SMA-connector to the dipole feedpoint are:

Electrical delay: **1.375 ns** (one direction)
Transmission factor: **0.987** (voltage transmission, one direction)

The dipole was positioned at the flat phantom sections according to section 1 and the distance holder was in place during impedance measurements.

Feedpoint impedance at 835 MHz: $\text{Re}\{Z\} = 49.4 \Omega$

$\text{Im}\{Z\} = -3.8 \Omega$

Return Loss at 835 MHz **-28.4 dB**

4. Handling

Do not apply excessive force to the dipole arms, because they might bend. Bending of the dipole arms stresses the soldered connections near the feedpoint leading to a damage of the dipole.

5. Design

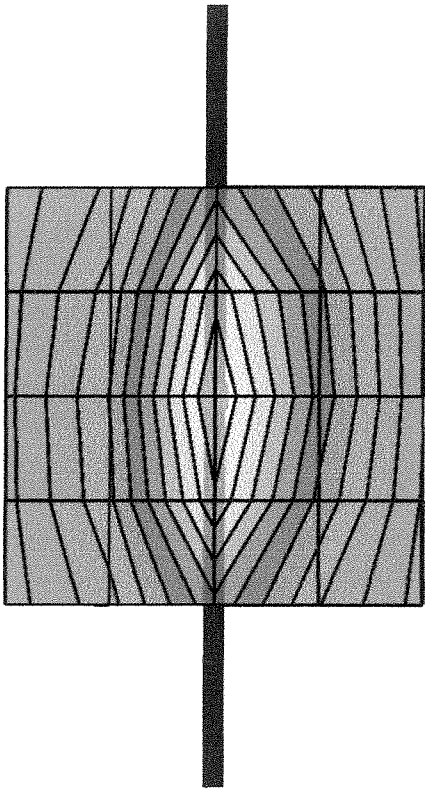
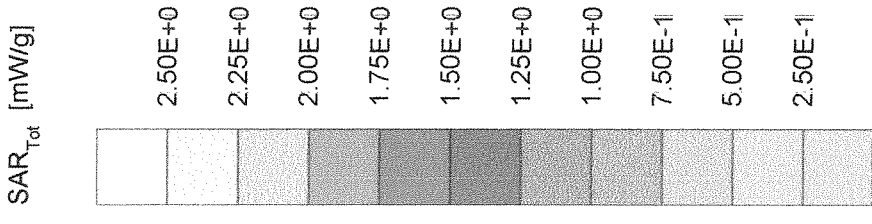
The dipole is made of standard semirigid coaxial cable. The center conductor of the feeding line is directly connected to the second arm of the dipole. The antenna is therefore short-circuited for DC-signals.

6. Power Test

After long term use with 100W radiated power, only a slight warming of the dipole near the feedpoint can be measured.

Validation Dipole D835V2 SN:453, d = 15 mm

Frequency: 835 MHz; Antenna Input Power: 250 [mW]
 Phantom; Flat Section; Grid Spacing: Dx = 20.0, Dy = 20.0, Dz = 10.0
 Case: ET3DV6 - SN1507; ConvF(6.50,6.50,6.50) at 900 MHz; IEEE1528 835 MHz; $\sigma = 0.89$ mho/m $\epsilon_r = 41.9$ $\rho = 1.00$ g/cm³
 Cases (2): Peak: 4.16 mW/g ± 0.00 dB, SAR (1g): 2.60 mW/g ± 0.01 dB, SAR (10g): 1.66 mW/g ± 0.02 dB, (Worst-case extrapolation)
 Extrapolation depth: 12.0 (10.6, 13.8) [mm]
 Reverdrift: -0.00 dB



CHI S11 1 U FS

1: 49.424 Ω -3.8203 Ω 49.892 pF

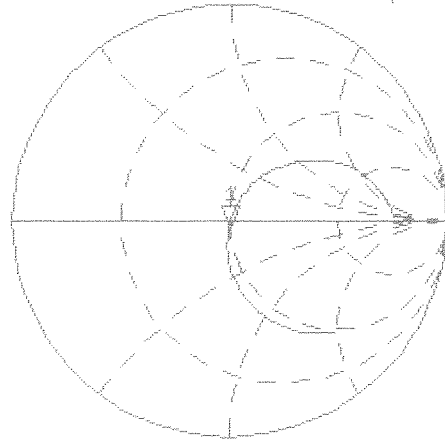
835.000 000 MHz

Del

Cor

Avg
16

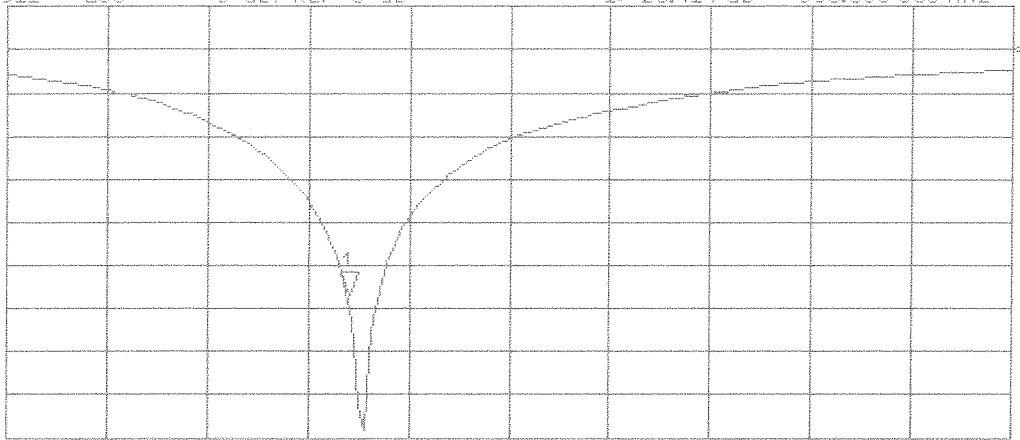
↑



CH2 S11 LOG 5 dB/REF 0 dB 1:-28.414 dB 835.000 000 MHz

Cor

↑



START 700.000 000 MHz

STOP 1100.000 000 MHz