

Appendix B2:
SAR Distribution Plots (Body)

KX160A, #6RGJ AMPS Flat Ch383 Phone Closed with 25mm Air Gap, Standard Battery

Communication System: AMPS, Frequency: 836.49 MHz, Duty Cycle: 1:1

Medium: M900, Medium parameters used (interpolated): $f = 836.49$ MHz; $\sigma = 0.929$ mho/m; $\epsilon_r = 56$; $\rho = 1000$ kg/m³

Phantom: SAM 12, Phantom section: Flat Section

DASY4 Configuration:

Probe: ET3DV6 - SN1713, ConvF(5.98, 5.98, 5.98), Calibrated: 5/19/2005

Sensor-Surface: 4mm (Mechanical And Optical Surface Detection),

Electronics: DAE4 Sn602, Calibrated: 8/27/2004

Measurement SW: DASY4, V4.4 Build 3

Postprocessing SW: SEMCAD, V1.8 Build 130

Temperature:

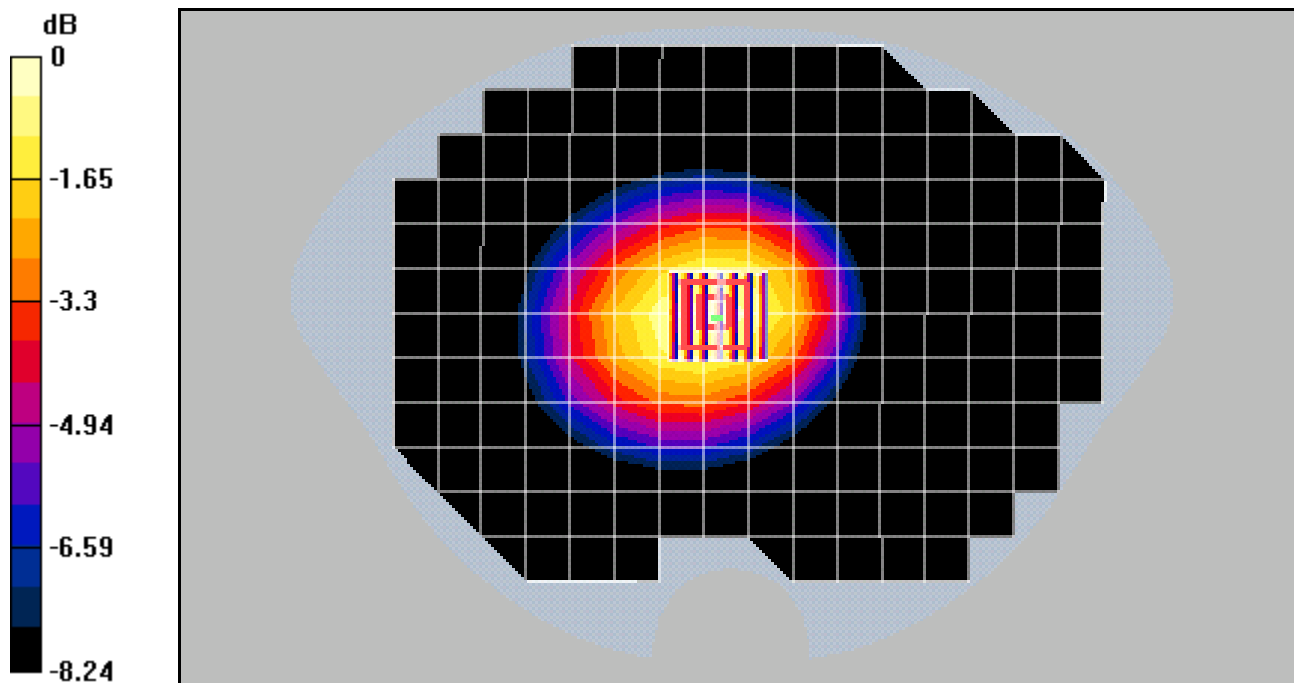
Room T = 21.8 +/- 1 deg C, Liquid T = 22.0 +/- 1 deg C

AMPS Ch383/Zoom Scan (7x7x7)/Cube 0: Measurement grid: dx=5mm, dy=5mm, dz=5mm

Reference Value = 26.2 V/m; Power Drift = -0.0 dB

Peak SAR (extrapolated) = 0.811 W/kg

SAR(1 g) = 0.635 mW/g; SAR(10 g) = 0.468 mW/g



0 dB = 0.672mW/g

KX160A, #6RGJ AMPS Ch799 Flat Phone Closed with Holster, Extended Battery

Communication System: AMPS, Frequency: 848.97 MHz, Duty Cycle: 1:1

Medium: M900, Medium parameters used (interpolated): $f = 848.97$ MHz; $\sigma = 0.932$ mho/m; $\epsilon_r = 55.8$; $\rho = 1000$ kg/m³

Phantom: SAM 12, Phantom section: Flat Section

DASY4 Configuration:

Probe: ET3DV6 - SN1713, ConvF(5.98, 5.98, 5.98), Calibrated: 5/19/2005

Sensor-Surface: 4mm (Mechanical And Optical Surface Detection),

Electronics: DAE4 Sn602, Calibrated: 8/27/2004

Measurement SW: DASY4, V4.4 Build 3

Postprocessing SW: SEMCAD, V1.8 Build 130

Temperature:

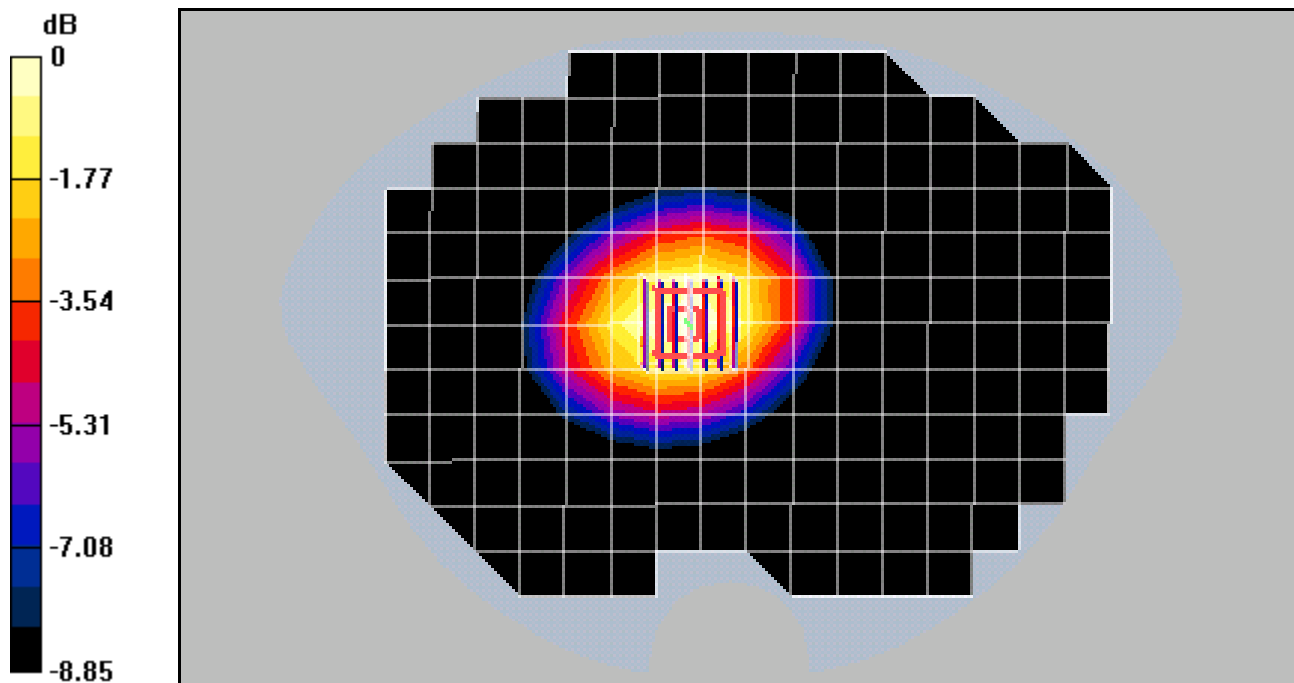
Room T = 21.8 +/- 1 deg C, Liquid T = 22.0 +/- 1 deg C

AMPS Ch799/Zoom Scan (7x7x7)/Cube 0: Measurement grid: dx=5mm, dy=5mm, dz=5mm

Reference Value = 32.3 V/m; Power Drift = -0.2 dB

Peak SAR (extrapolated) = 1.57 W/kg

SAR(1 g) = 1.21 mW/g; SAR(10 g) = 0.871 mW/g



0 dB = 1.29mW/g

KX160A, #6RGJ AMPS Ch383 Flat Phone Closed with Leather Case, Standard Battery

Communication System: AMPS, Frequency: 836.49 MHz, Duty Cycle: 1:1

Medium: M900, Medium parameters used (interpolated): $f = 836.49$ MHz; $\sigma = 0.929$ mho/m; $\epsilon_r = 56$; $\rho = 1000$ kg/m³

Phantom: SAM 12, Phantom section: Flat Section

DASY4 Configuration:

Probe: ET3DV6 - SN1713, ConvF(5.98, 5.98, 5.98), Calibrated: 5/19/2005

Sensor-Surface: 4mm (Mechanical And Optical Surface Detection),

Electronics: DAE4 Sn602, Calibrated: 8/27/2004

Measurement SW: DASY4, V4.4 Build 3

Postprocessing SW: SEMCAD, V1.8 Build 130

Temperature:

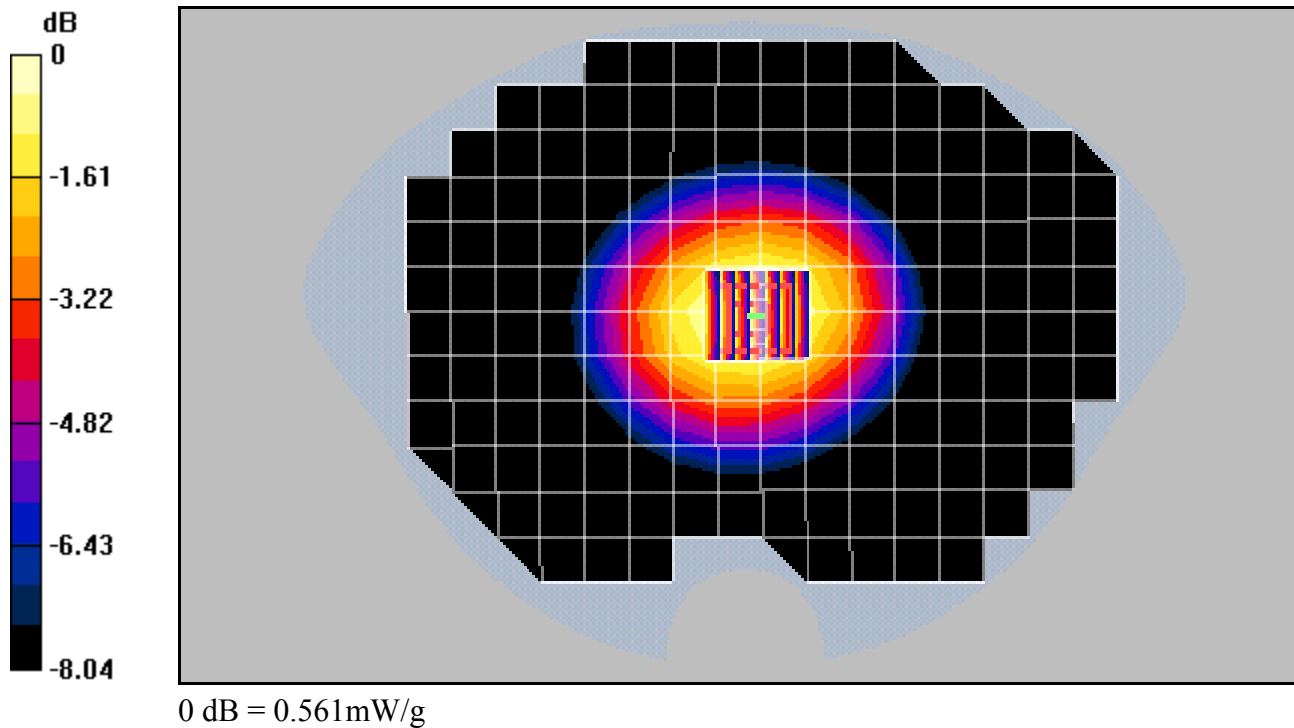
Room T = 21.8 +/- 1 deg C, Liquid T = 22.0 +/- 1 deg C

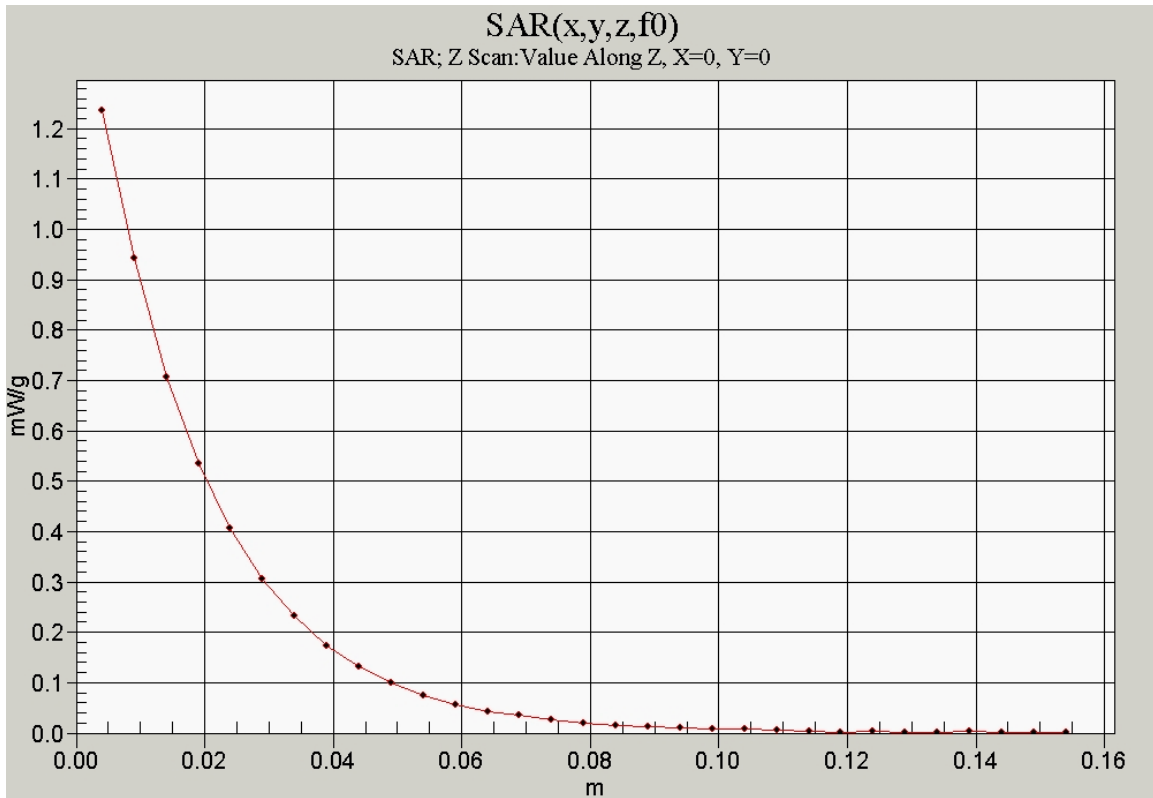
AMPS Ch383/Zoom Scan (7x7x7)/Cube 0: Measurement grid: dx=5mm, dy=5mm, dz=5mm

Reference Value = 25.2 V/m; Power Drift = -0.1 dB

Peak SAR (extrapolated) = 0.664 W/kg

SAR(1 g) = 0.529 mW/g; SAR(10 g) = 0.393 mW/g





KX160A #6RGJ CDMA-800 Ch383 Flat Phone Open 25mm Air Gap, Standard Battery

Communication System: CDMA-800, Frequency: 836.49 MHz, Duty Cycle: 1:1

Medium: M900, Medium parameters used (interpolated): $f = 836.49$ MHz; $\sigma = 0.932$ mho/m; $\epsilon_r = 55.8$; $\rho = 1000$ kg/m³

Phantom: SAM 12, Phantom section: Flat Section

DASY4 Configuration:

Probe: ET3DV6 - SN1713, ConvF(5.98, 5.98, 5.98), Calibrated: 5/19/2005

Sensor-Surface: 4mm (Mechanical And Optical Surface Detection),

Electronics: DAE4 Sn602, Calibrated: 8/27/2004

Measurement SW: DASY4, V4.4 Build 3

Postprocessing SW: SEMCAD, V1.8 Build 130

Temperature:

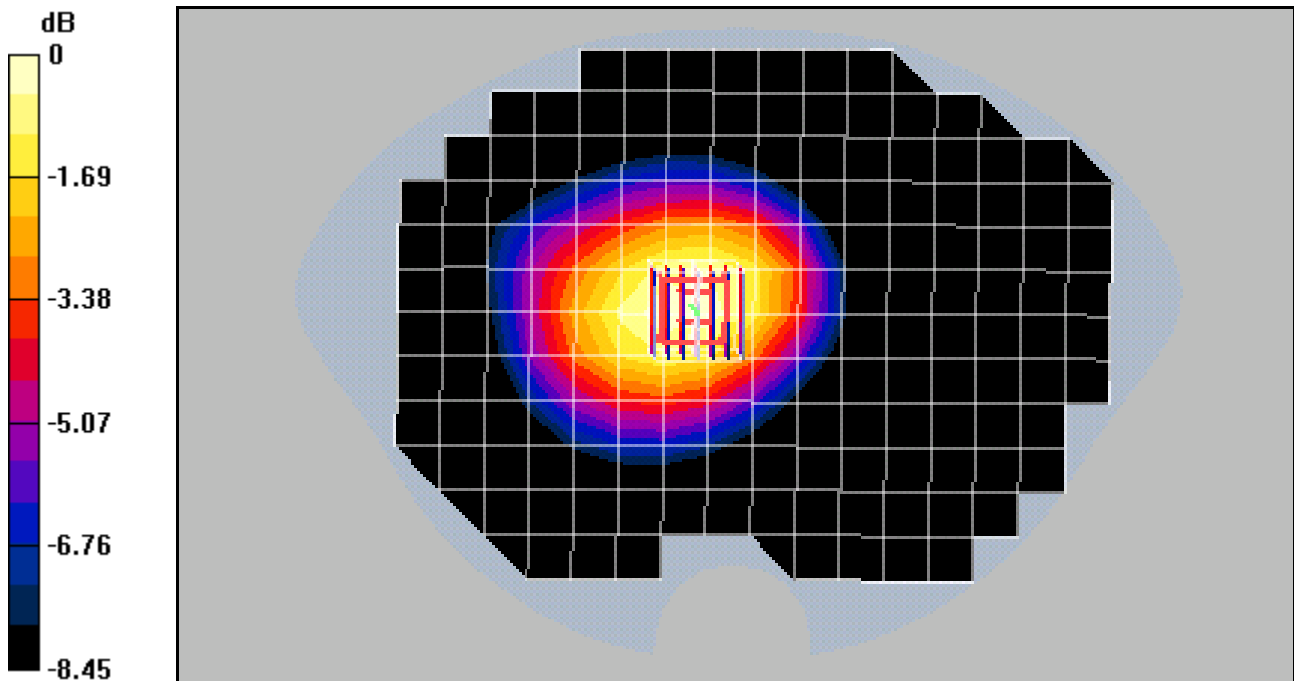
Room T = 21.8 +/- 1 deg C, Liquid T = 22.0 +/- 1 deg C

CDMA-800 Ch383/Zoom Scan (7x7x7)/Cube 0: Measurement grid: dx=5mm, dy=5mm, dz=5mm

Reference Value = 21.8 V/m; Power Drift = -0.1 dB

Peak SAR (extrapolated) = 0.700 W/kg

SAR(1 g) = 0.554 mW/g; SAR(10 g) = 0.408 mW/g



0 dB = 0.589mW/g

KX160A, #6RGJ CDMA-800 Ch777 Flat Phone Closed with Holster, Ext. Battery

Communication System: CDMA-800, Frequency: 848.31 MHz, Duty Cycle: 1:1

Medium: M900,Medium parameters used (interpolated): $f = 848.31$ MHz; $\sigma = 0.932$ mho/m; $\epsilon_r = 55.8$; $\rho = 1000$ kg/m³

Phantom: SAM 12,Phantom section: Flat Section

DASY4 Configuration:

Probe: ET3DV6 - SN1713, ConvF(5.98, 5.98, 5.98), Calibrated: 5/19/2005

Sensor-Surface: 4mm (Mechanical And Optical Surface Detection),

Electronics: DAE4 Sn602,Calibrated: 8/27/2004

Measurement SW: DASY4, V4.4 Build 3

Postprocessing SW: SEMCAD, V1.8 Build 130

Temperature:

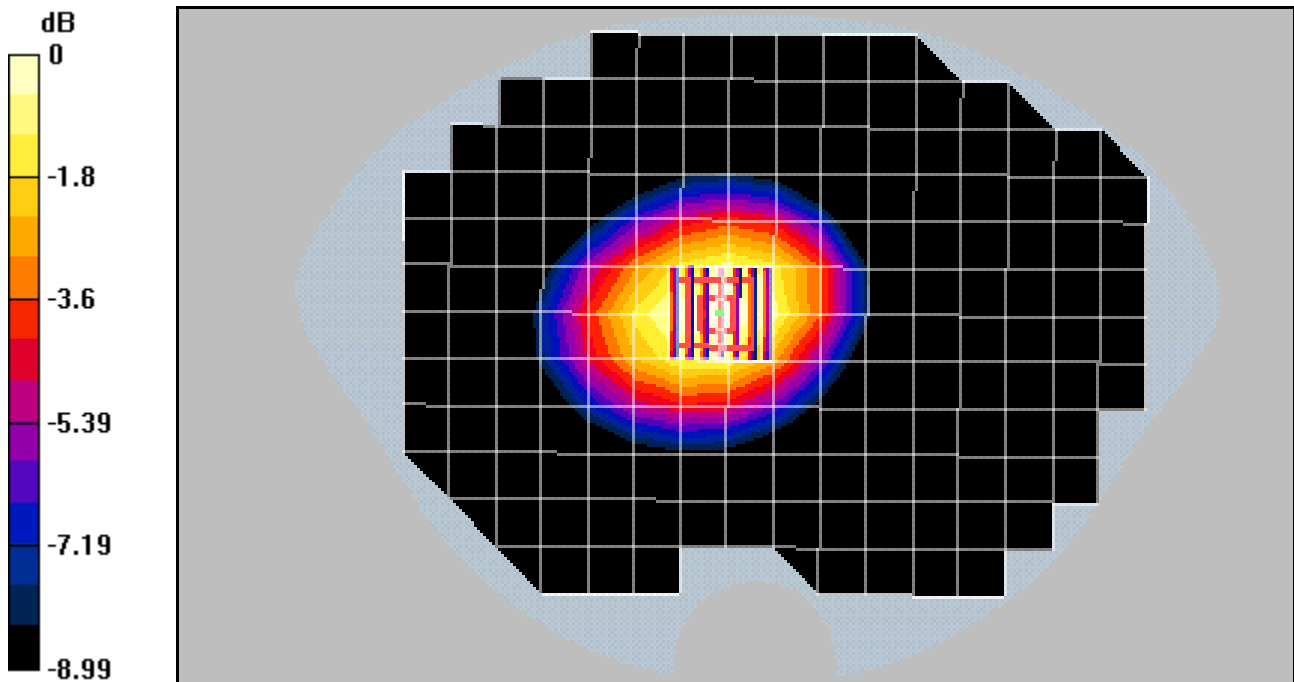
Room T = 21.8 +/- 1 deg C, Liquid T = 22.0 +/- 1 deg C

CDMA-800 Ch777/Zoom Scan (7x7x7)/Cube 0: Measurement grid: dx=5mm, dy=5mm, dz=5mm

Reference Value = 32.7 V/m; Power Drift = -0.2 dB

Peak SAR (extrapolated) = 1.47 W/kg

SAR(1 g) = 1.13 mW/g; SAR(10 g) = 0.812 mW/g



0 dB = 1.2mW/g

KX160A #6RGJ CDMA-800 Ch383 Flat Phone Open Leather Case, Standard Battery

Communication System: CDMA-800, Frequency: 836.49 MHz, Duty Cycle: 1:1

Medium: M900, Medium parameters used (interpolated): $f = 836.49$ MHz; $\sigma = 0.932$ mho/m; $\epsilon_r = 55.8$; $\rho = 1000$ kg/m³

Phantom: SAM 12, Phantom section: Flat Section

DASY4 Configuration:

Probe: ET3DV6 - SN1713, ConvF(5.98, 5.98, 5.98), Calibrated: 5/19/2005

Sensor-Surface: 4mm (Mechanical And Optical Surface Detection),

Electronics: DAE4 Sn602, Calibrated: 8/27/2004

Measurement SW: DASY4, V4.4 Build 3

Postprocessing SW: SEMCAD, V1.8 Build 130

Temperature:

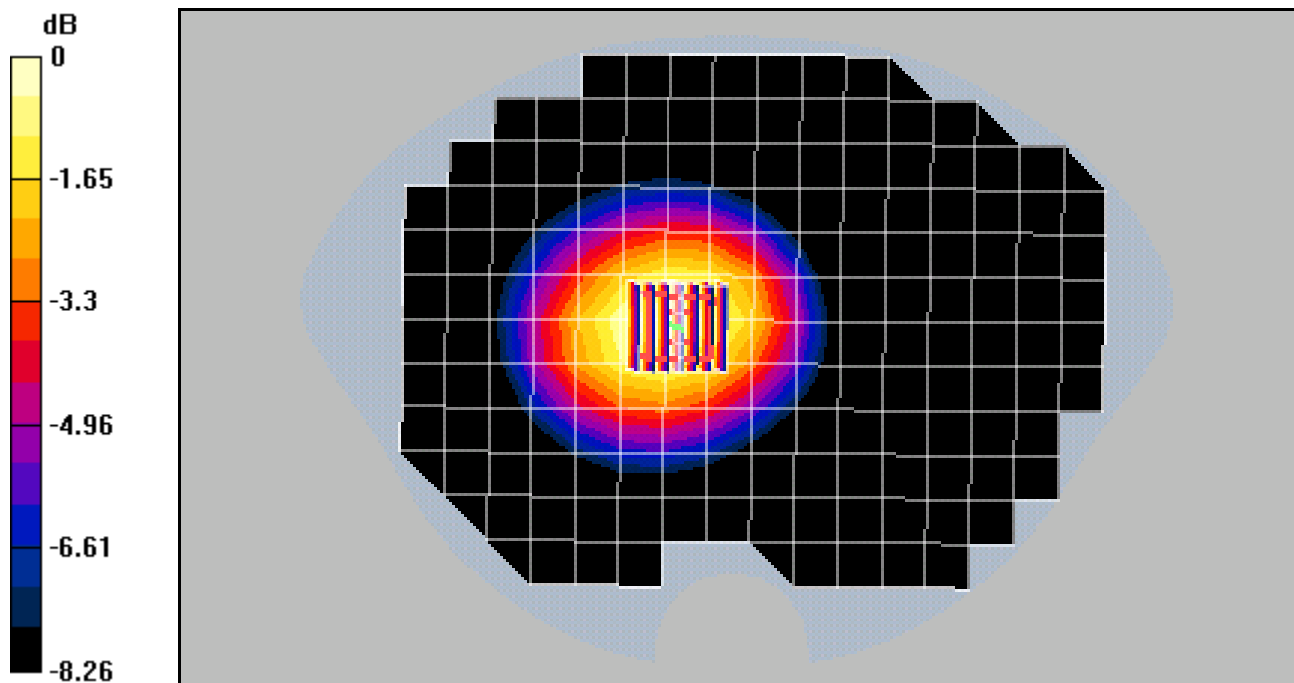
Room T = 21.8 +/- 1 deg C, Liquid T = 22.0 +/- 1 deg C

CDMA-800 Ch383/Zoom Scan (7x7x7)/Cube 0: Measurement grid: dx=5mm, dy=5mm, dz=5mm

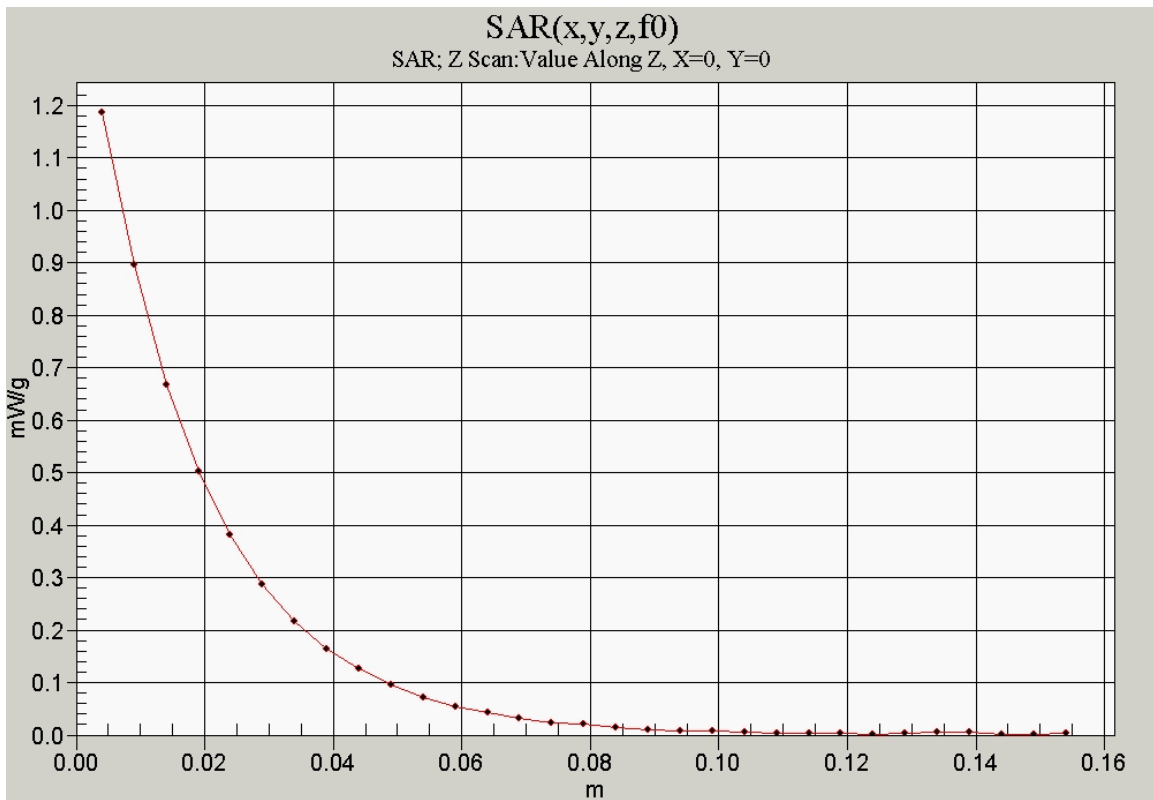
Reference Value = 20.5 V/m; Power Drift = 0.1 dB

Peak SAR (extrapolated) = 0.675 W/kg

SAR(1 g) = 0.524 mW/g; SAR(10 g) = 0.383 mW/g



0 dB = 0.554mW/g



KX160A #6RGJ CDMA-1900 Ch600 Flat Phone Closed 25mm Air Gap, Std. Battery

Communication System: PCS-1900, Frequency: 1880 MHz, Duty Cycle: 1:1

Medium: M1800, Medium parameters used: $f = 1880$ MHz; $\sigma = 1.5$ mho/m; $\epsilon_r = 54.1$; $\rho = 1000$ kg/m³

Phantom: SAM 12, Phantom section: Flat Section

DASY4 Configuration:

Probe: ET3DV6 - SN1713, ConvF(4.62, 4.62, 4.62), Calibrated: 5/19/2005

Sensor-Surface: 4mm (Mechanical And Optical Surface Detection),

Electronics: DAE4 Sn602, Calibrated: 8/27/2004

Measurement SW: DASY4, V4.4 Build 3

Postprocessing SW: SEMCAD, V1.8 Build 130

Temperature:

Room T = 21.8 +/- 1 deg C, Liquid T = 22.0 +/- 1 deg C

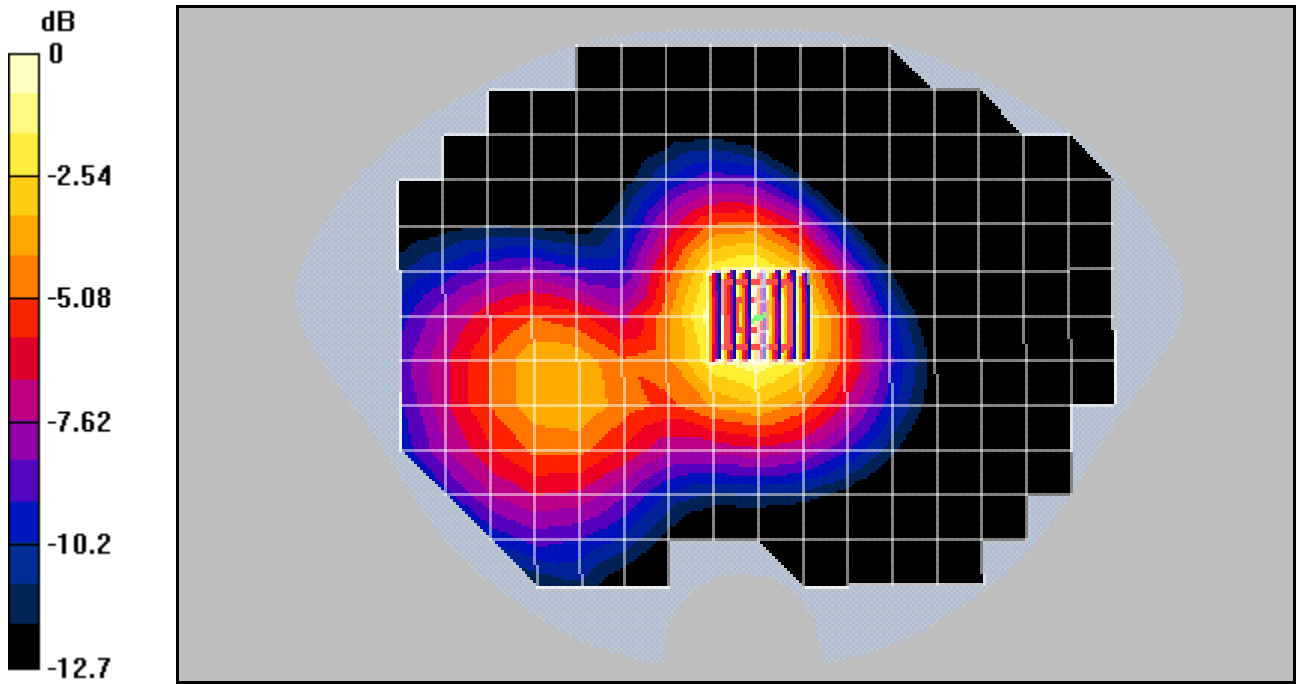
CDMA-1900 Ch600/Zoom Scan (7x7x7)/Cube 0: Measurement grid: dx=5mm, dy=5mm, dz=5mm

Reference Value = 16.6 V/m; Power Drift = -0.0 dB

Peak SAR (extrapolated) = 0.576 W/kg

SAR(1 g) = 0.374 mW/g; SAR(10 g) = 0.242 mW/g

Maximum value of SAR (measured) = 0.402 mW/g



0 dB = 0.402mW/g

KX160A #6RGJ CDMA-1900 Ch600 Flat Phone Open with Holster, Ext. Battery

Communication System: PCS-1900, Frequency: 1880 MHz, Duty Cycle: 1:1

Medium: M1800, Medium parameters used: $f = 1880$ MHz; $\sigma = 1.5$ mho/m; $\epsilon_r = 54.3$; $\rho = 1000$ kg/m³

Phantom: SAM 12, Phantom section: Flat Section

DASY4 Configuration:

Probe: ET3DV6 - SN1713, ConvF(4.62, 4.62, 4.62), Calibrated: 5/19/2005

Sensor-Surface: 4mm (Mechanical And Optical Surface Detection),

Electronics: DAE4 Sn602, Calibrated: 8/27/2004

Measurement SW: DASY4, V4.4 Build 3

Postprocessing SW: SEMCAD, V1.8 Build 130

Temperature:

Room T = 21.8 +/- 1 deg C, Liquid T = 22.0 +/- 1 deg C

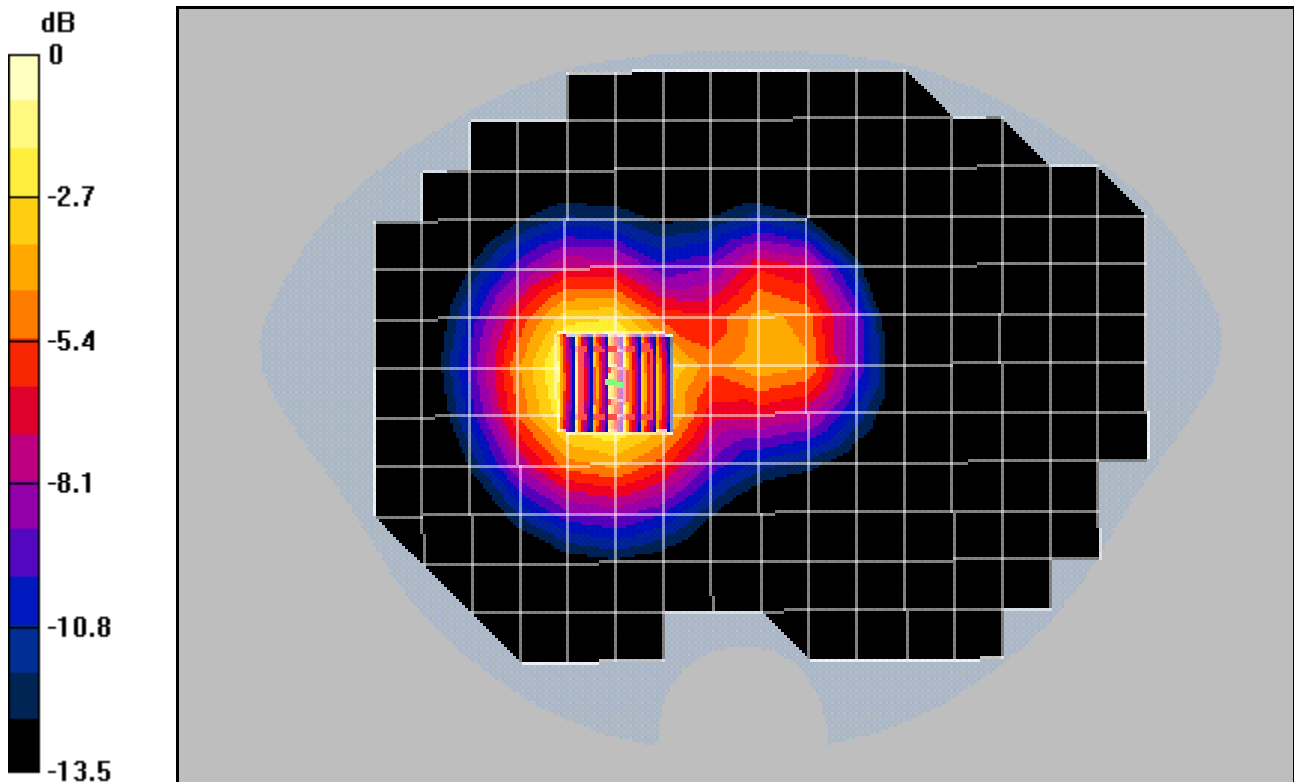
CDMA-1900 Ch600/Zoom Scan (7x7x7)/Cube 0: Measurement grid: dx=5mm, dy=5mm, dz=5mm

Reference Value = 13.3 V/m; Power Drift = 0.0 dB

Peak SAR (extrapolated) = 1.19 W/kg

SAR(1 g) = 0.824 mW/g; SAR(10 g) = 0.536 mW/g

Maximum value of SAR (measured) = 0.891 mW/g



0 dB = 0.891mW/g

KX160A #6RGJ CDMA-1900 Ch600 Flat Phone Closed Leather Case, Standard Battery

Communication System: PCS-1900, Frequency: 1880 MHz, Duty Cycle: 1:1

Medium: M1800, Medium parameters used: $f = 1880$ MHz; $\sigma = 1.5$ mho/m; $\epsilon_r = 54.1$; $\rho = 1000$ kg/m³

Phantom: SAM 12, Phantom section: Flat Section

DASY4 Configuration:

Probe: ET3DV6 - SN1713, ConvF(4.62, 4.62, 4.62), Calibrated: 5/19/2005

Sensor-Surface: 4mm (Mechanical And Optical Surface Detection),

Electronics: DAE4 Sn602, Calibrated: 8/27/2004

Measurement SW: DASY4, V4.4 Build 3

Postprocessing SW: SEMCAD, V1.8 Build 130

Temperature:

Room T = 21.8 +/- 1 deg C, Liquid T = 22.0 +/- 1 deg C

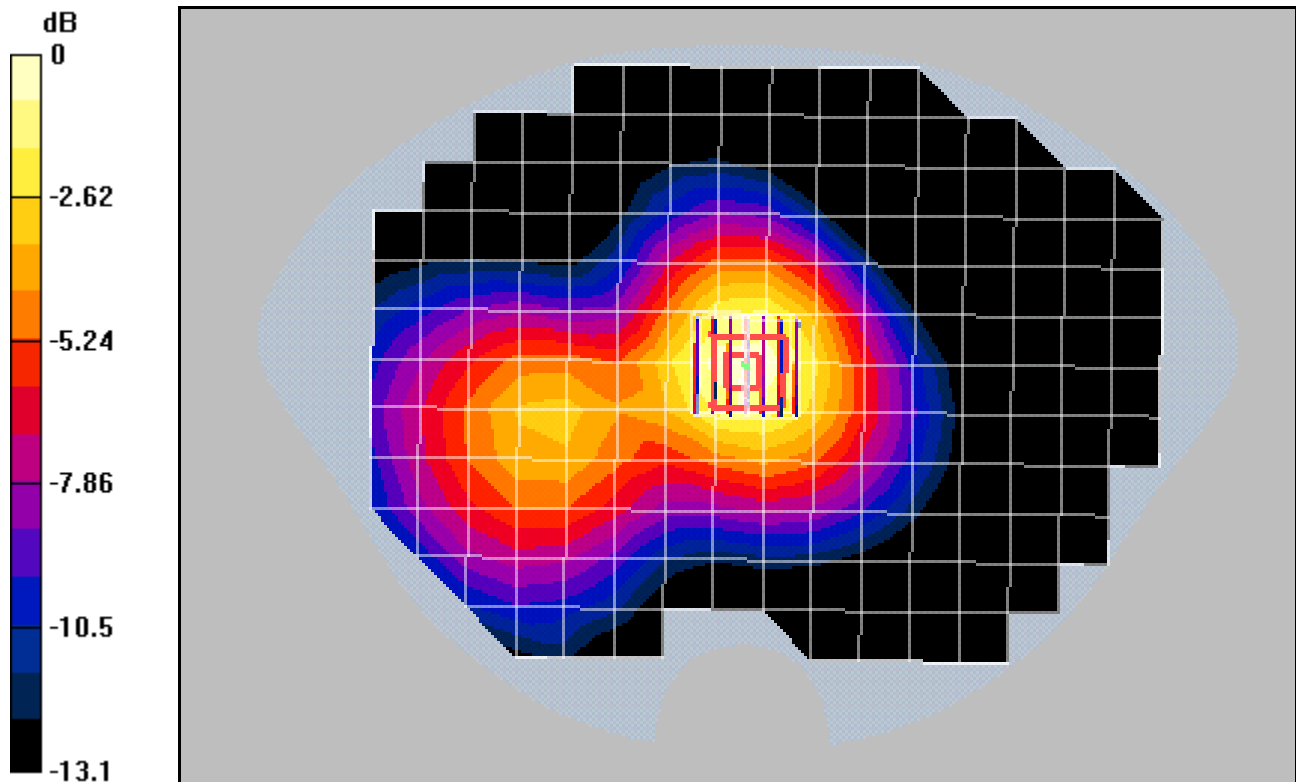
CDMA-1900 Ch600/Zoom Scan (7x7x7)/Cube 0: Measurement grid: dx=5mm, dy=5mm, dz=5mm

Reference Value = 17 V/m; Power Drift = 0.0 dB

Peak SAR (extrapolated) = 0.620 W/kg

SAR(1 g) = 0.400 mW/g; SAR(10 g) = 0.256 mW/g

Maximum value of SAR (measured) = 0.429 mW/g



0 dB = 0.429mW/g

