

## **Appendix B2:**

### **SAR Distribution Plots (Body)**

Test Laboratory: The name of your organization

**KX16 #0823, AMPS ch799 Flat Phone Closed with 25mm Air Space and Standard Battery**

Communication System: AMPS, Frequency: 848.97 MHz, Duty Cycle: 1:1

Medium: M900,Medium parameters used (interpolated):  $f = 848.97$  MHz;  $\sigma = 0.93$  mho/m;  $\epsilon_r = 54.2$ ;  $\rho = 1000$  kg/m<sup>3</sup>

Phantom: SAM 12,Phantom section: Flat Section

**DASY4 Configuration:**

Probe: ET3DV6 - SN1713, ConvF(5.98, 5.98, 5.98), Calibrated: 5/19/2005

Sensor-Surface: 4mm (Mechanical And Optical Surface Detection),

Electronics: DAE4 Sn530,Calibrated: 1/4/2005

Measurement SW: DASY4, V4.6 Build 19

Postprocessing SW: SEMCAD, V1.8 Build 159

**Temperature:**

Room T = 21.8 +/- 1 deg C, Liquid T = 22.0 +/- 1 deg C

**AMPS Ch799/Zoom Scan (7x7x7)/Cube 0:** Measurement grid: dx=5mm, dy=5mm, dz=5mm

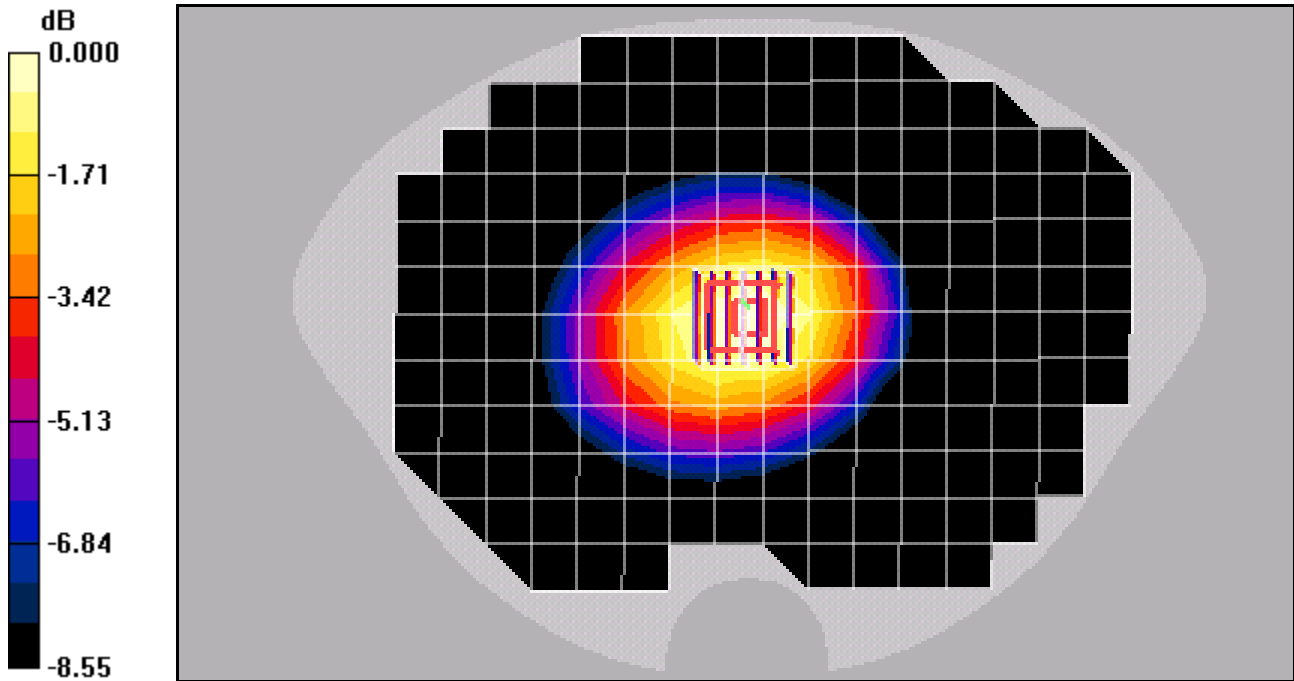
Reference Value = 33.8 V/m; Power Drift = -0.154 dB

Peak SAR (extrapolated) = 1.21 W/kg

**SAR(1 g) = 0.946 mW/g; SAR(10 g) = 0.693 mW/g**

[Info: Interpolated medium parameters used for SAR evaluation.](#)

Maximum value of SAR (measured) = 0.997 mW/g



0 dB = 0.997mW/g

Test Laboratory: The name of your organization

## KX16 #0823, AMPS ch799 Flat Leather Case with Phone Closed and Standard Battery

Communication System: AMPS, Frequency: 848.97 MHz, Duty Cycle: 1:1

Medium: M900, Medium parameters used (interpolated):  $f = 848.97$  MHz;  $\sigma = 0.93$  mho/m;  $\epsilon_r = 54.2$ ;  $\rho = 1000$  kg/m<sup>3</sup>

Phantom: SAM 12, Phantom section: Flat Section

### DASY4 Configuration:

Probe: ET3DV6 - SN1713, ConvF(5.98, 5.98, 5.98), Calibrated: 5/19/2005

Sensor-Surface: 4mm (Mechanical And Optical Surface Detection),

Electronics: DAE4 Sn530, Calibrated: 1/4/2005

Measurement SW: DASY4, V4.6 Build 19

Postprocessing SW: SEMCAD, V1.8 Build 159

### Temperature:

Room T = 21.8 +/- 1 deg C, Liquid T = 22.0 +/- 1 deg C

### AMPS Ch799/Zoom Scan (7x7x7)/Cube 0: Measurement grid: dx=5mm, dy=5mm, dz=5mm

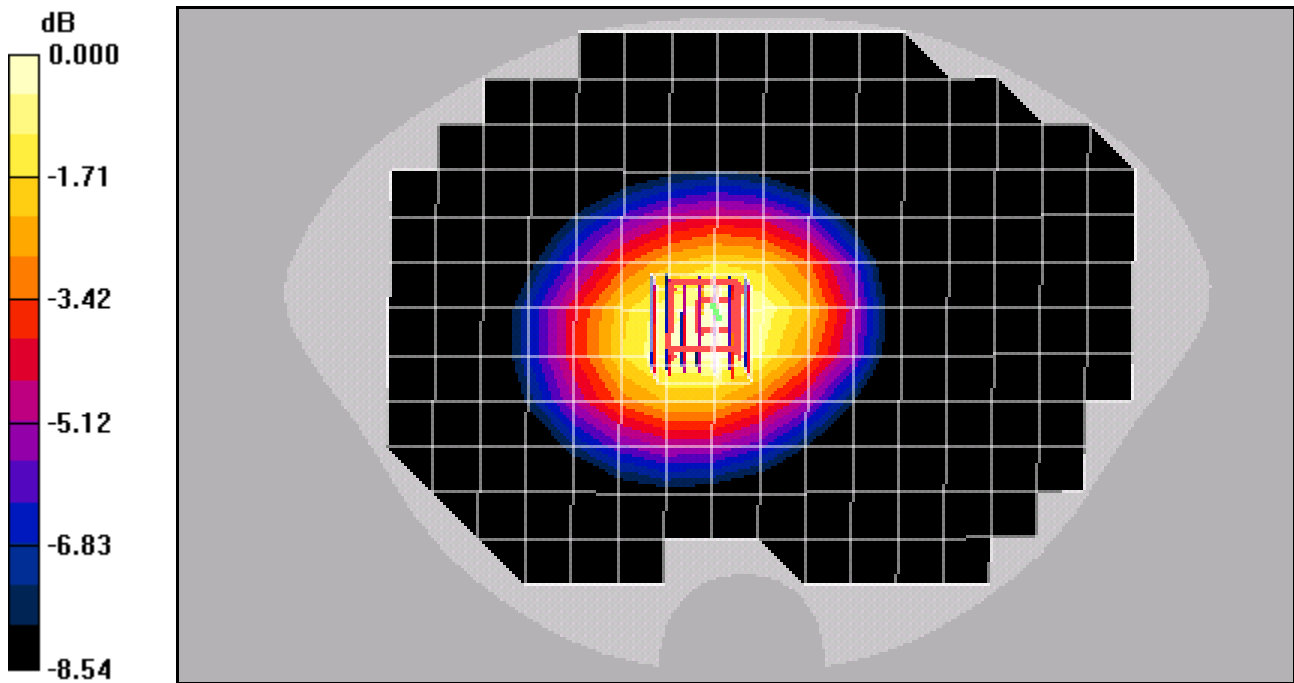
Reference Value = 31.6 V/m; Power Drift = -0.097 dB

Peak SAR (extrapolated) = 1.14 W/kg

SAR(1 g) = 0.884 mW/g; SAR(10 g) = 0.649 mW/g

[Info: Interpolated medium parameters used for SAR evaluation.](#)

Maximum value of SAR (measured) = 0.950 mW/g



0 dB = 0.950mW/g

Test Laboratory: The name of your organization

## KX16 #0823, AMPS ch799 Flat Holster with Phone Open and Standard Battery

Communication System: AMPS, Frequency: 848.97 MHz, Duty Cycle: 1:1

Medium: M900,Medium parameters used (interpolated):  $f = 848.97$  MHz;  $\sigma = 0.93$  mho/m;  $\epsilon_r = 54.2$ ;  $\rho = 1000$  kg/m<sup>3</sup>

Phantom: SAM 12,Phantom section: Flat Section

### DASY4 Configuration:

Probe: ET3DV6 - SN1713, ConvF(5.98, 5.98, 5.98), Calibrated: 5/19/2005

Sensor-Surface: 4mm (Mechanical And Optical Surface Detection),

Electronics: DAE4 Sn530,Calibrated: 1/4/2005

Measurement SW: DASY4, V4.6 Build 19

Postprocessing SW: SEMCAD, V1.8 Build 159

### Temperature:

Room T = 21.8 +/- 1 deg C, Liquid T = 22.0 +/- 1 deg C

### AMPS Ch799/Area Scan (13x17x1):

Measurement grid: dx=15mm, dy=15mm

Info: [Interpolated medium parameters used for SAR evaluation.](#)

Maximum value of SAR (measured) = 1.19 mW/g

### AMPS Ch799/Zoom Scan (7x7x7)/Cube 0:

Measurement grid: dx=5mm, dy=5mm, dz=5mm

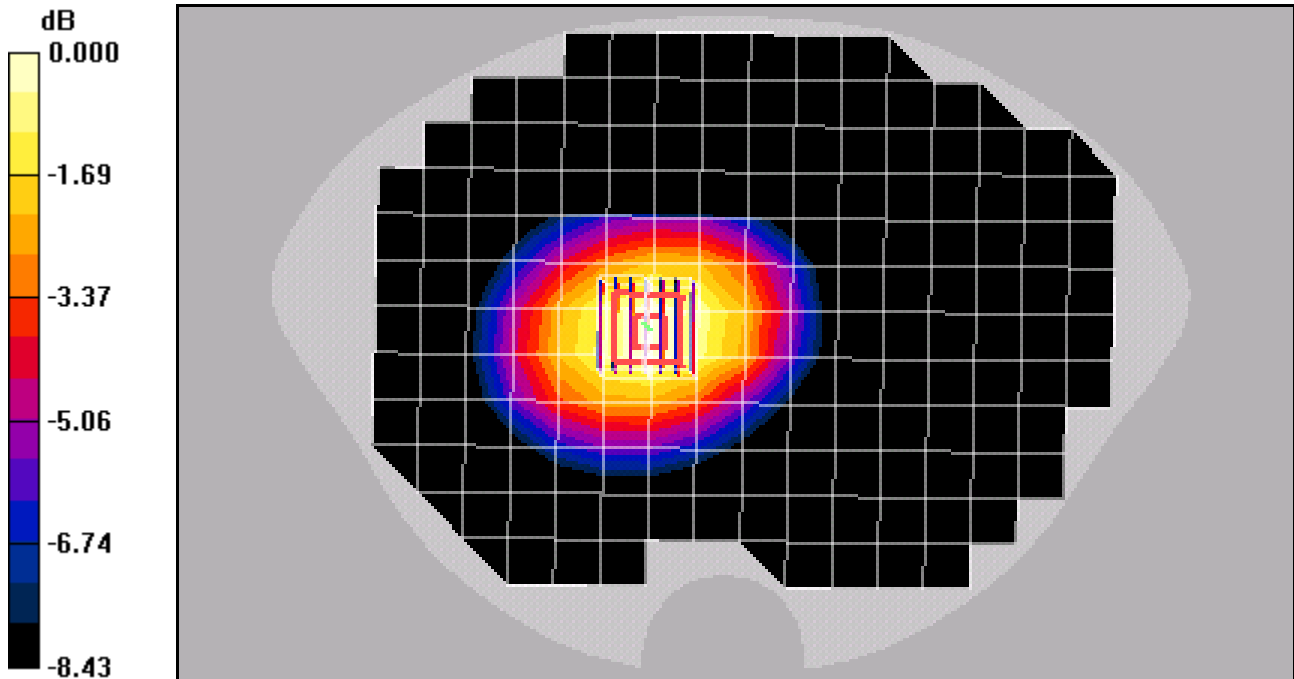
Reference Value = 32.2 V/m; Power Drift = 0.167 dB

Peak SAR (extrapolated) = 1.54 W/kg

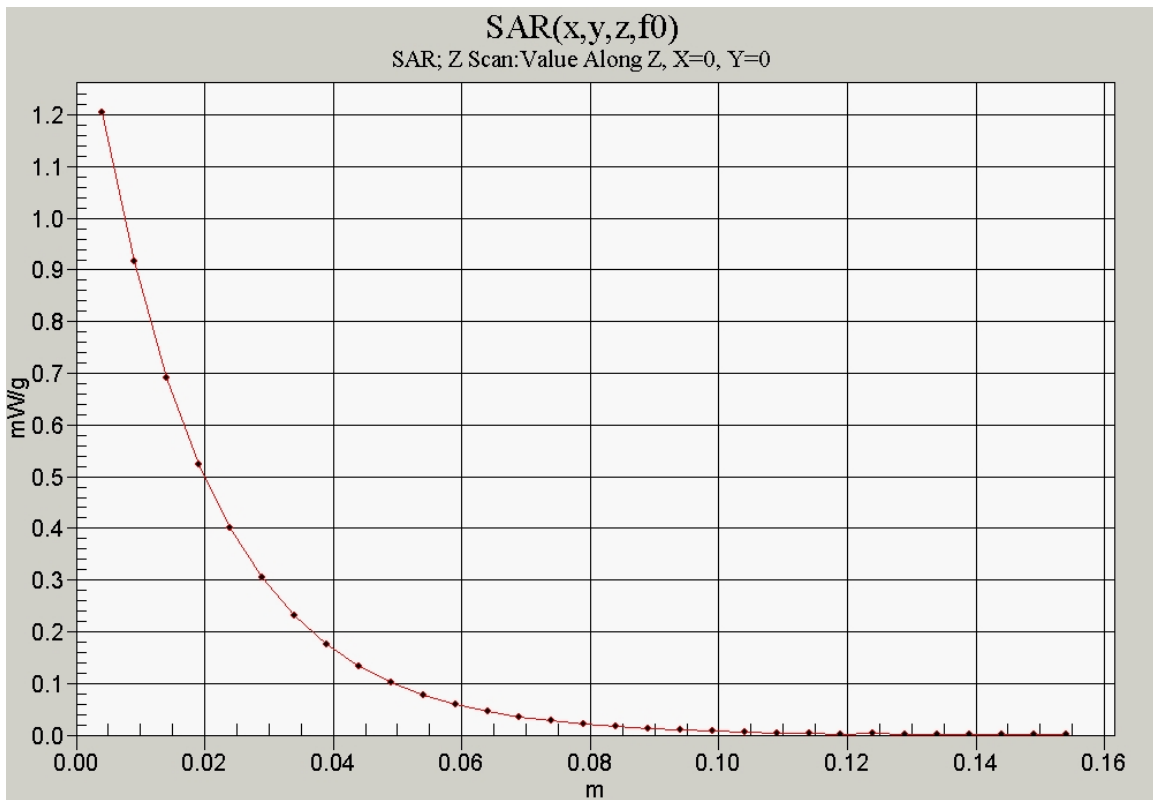
SAR(1 g) = 1.2 mW/g; SAR(10 g) = 0.874 mW/g

Info: [Interpolated medium parameters used for SAR evaluation.](#)

Maximum value of SAR (measured) = 1.26 mW/g



0 dB = 1.26mW/g



Test Laboratory: The name of your organization

**KX16 #0823, CDMA-800 ch777 Flat 25mm Air Space with Phone Open and Standard Battery**

Communication System: CDMA-800, Frequency: 848.31 MHz, Duty Cycle: 1:1

Medium: M900,Medium parameters used (interpolated):  $f = 848.31$  MHz;  $\sigma = 0.93$  mho/m;  $\epsilon_r = 54.2$ ;  $\rho = 1000$  kg/m<sup>3</sup>

Phantom: SAM 12,Phantom section: Flat Section

**DASY4 Configuration:**

Probe: ET3DV6 - SN1713, ConvF(5.98, 5.98, 5.98), Calibrated: 5/19/2005

Sensor-Surface: 4mm (Mechanical And Optical Surface Detection),

Electronics: DAE4 Sn530,Calibrated: 1/4/2005

Measurement SW: DASY4, V4.6 Build 19

Postprocessing SW: SEMCAD, V1.8 Build 159

**Temperature:**

Room T = 21.8 +/- 1 deg C, Liquid T = 22.0 +/- 1 deg C

**CDMA-800 Ch777/Zoom Scan (7x7x7)/Cube 0:** Measurement grid: dx=5mm, dy=5mm, dz=5mm

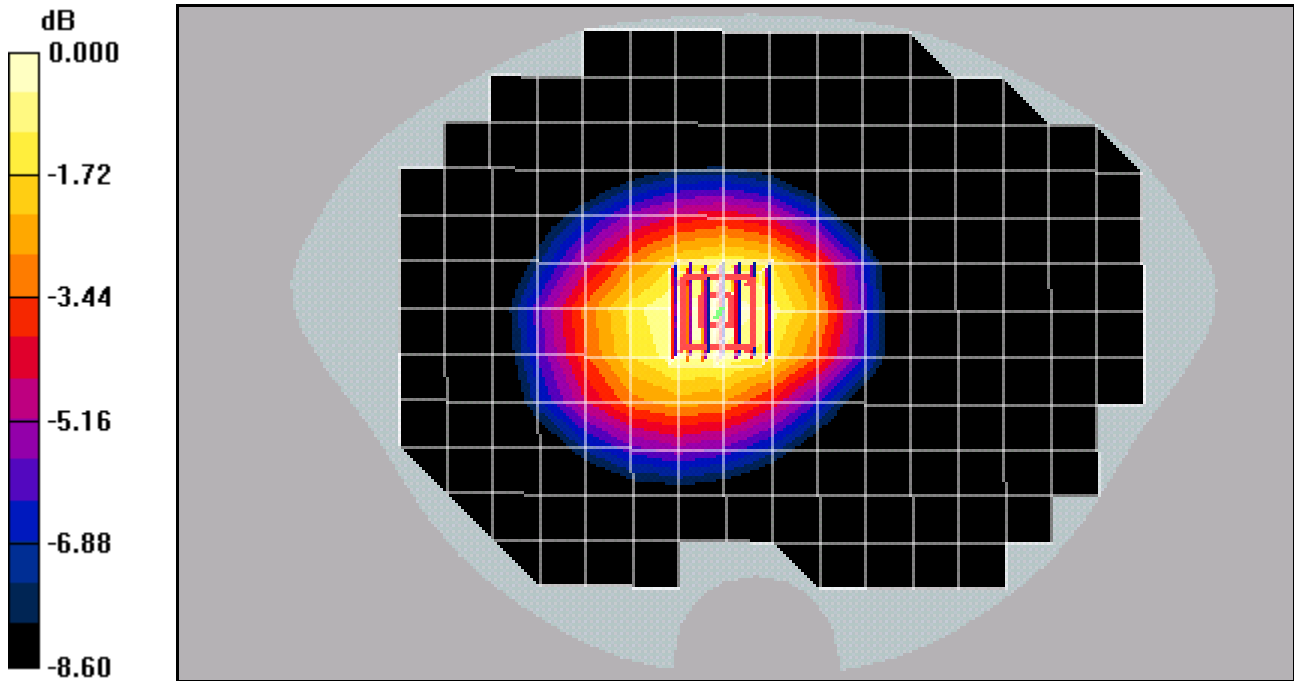
Reference Value = 30.1 V/m; Power Drift = -0.126 dB

Peak SAR (extrapolated) = 1.12 W/kg

**SAR(1 g) = 0.873 mW/g; SAR(10 g) = 0.637 mW/g**

Info: Interpolated medium parameters used for SAR evaluation.

Maximum value of SAR (measured) = 0.929 mW/g



0 dB = 0.929mW/g

Test Laboratory: Kyocera

**KX16 #0823 CDMA-800 ch383 Flat Leather Case with Phone Closed and Standard Battery**

Communication System: CDMA-800, Frequency: 836.49 MHz, Duty Cycle: 1:1

Medium: M900,Medium parameters used (interpolated):  $f = 836.49$  MHz;  $\sigma = 0.93$  mho/m;  $\epsilon_r = 54.2$ ;  $\rho = 1000$  kg/m<sup>3</sup>

Phantom: SAM 12,Phantom section: Flat Section

**DASY4 Configuration:**

Probe: ET3DV6 - SN1713, ConvF(5.98, 5.98, 5.98), Calibrated: 5/19/2005

Sensor-Surface: 4mm (Mechanical And Optical Surface Detection),

Electronics: DAE4 Sn530,Calibrated: 1/4/2005

Measurement SW: DASY4, V4.4 Build 3

Postprocessing SW: SEMCAD, V1.8 Build 159

**Temperature:**

Room T = 21.8 +/- 1 deg C, Liquid T = 22.0 +/- 1 deg C

**CDMA-800 Ch383/Zoom Scan (7x7x7)/Cube 0:** Measurement grid: dx=5mm, dy=5mm, dz=5mm

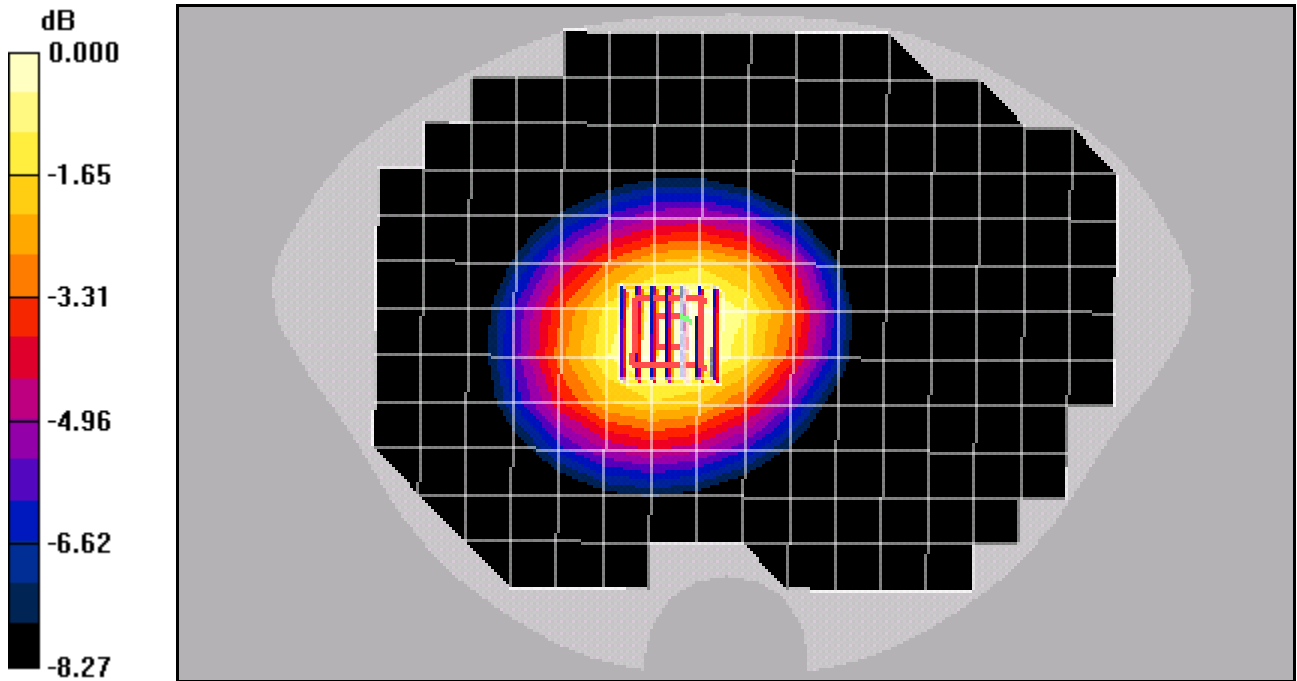
Reference Value = 28.6 V/m; Power Drift = -0.169 dB

Peak SAR (extrapolated) = 0.958 W/kg

**SAR(1 g) = 0.754 mW/g; SAR(10 g) = 0.557 mW/g**

[Info: Interpolated medium parameters used for SAR evaluation.](#)

Maximum value of SAR (measured) = 0.799 mW/g



0 dB = 0.799mW/g

Test Laboratory: Kyocera

### KX16 #0823 CDMA-800 ch777 Flat Holster with Phone Closed and Standard Battery

Communication System: CDMA-800, Frequency: 848.31 MHz, Duty Cycle: 1:1

Medium: M900, Medium parameters used (interpolated):  $f = 848.31$  MHz;  $\sigma = 0.93$  mho/m;  $\epsilon_r = 54.2$ ;  $\rho = 1000$  kg/m<sup>3</sup>

Phantom: SAM 12, Phantom section: Flat Section

**DASY4 Configuration:**

Probe: ET3DV6 - SN1713, ConvF(5.98, 5.98, 5.98), Calibrated: 5/19/2005

Sensor-Surface: 4mm (Mechanical And Optical Surface Detection),

Electronics: DAE4 Sn530, Calibrated: 1/4/2005

Measurement SW: DASY4, V4.4 Build 3

Postprocessing SW: SEMCAD, V1.8 Build 159

**Temperature:**

Room T = 21.8 +/- 1 deg C, Liquid T = 22.0 +/- 1 deg C

**CDMA-800 Ch777/Zoom Scan (7x7x7)/Cube 0:** Measurement grid: dx=5mm, dy=5mm, dz=5mm

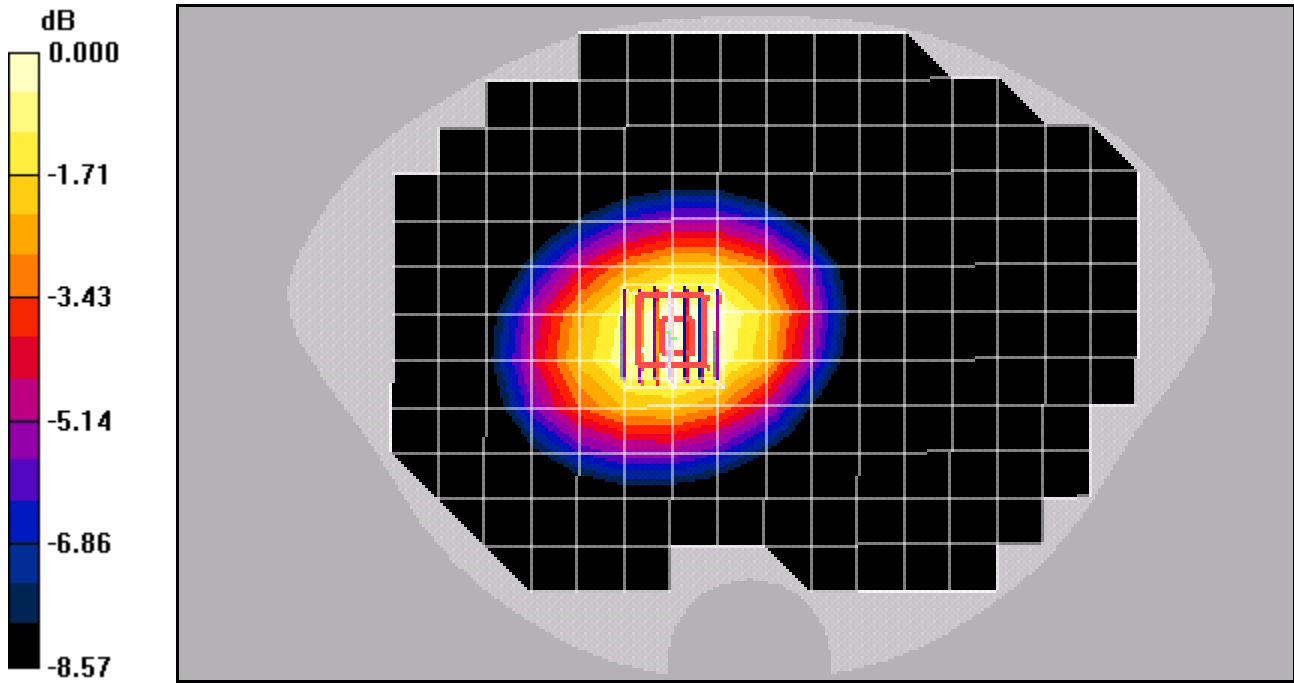
Reference Value = 33.7 V/m; Power Drift = -0.150 dB

Peak SAR (extrapolated) = 1.54 W/kg

SAR(1 g) = 1.22 mW/g; SAR(10 g) = 0.900 mW/g

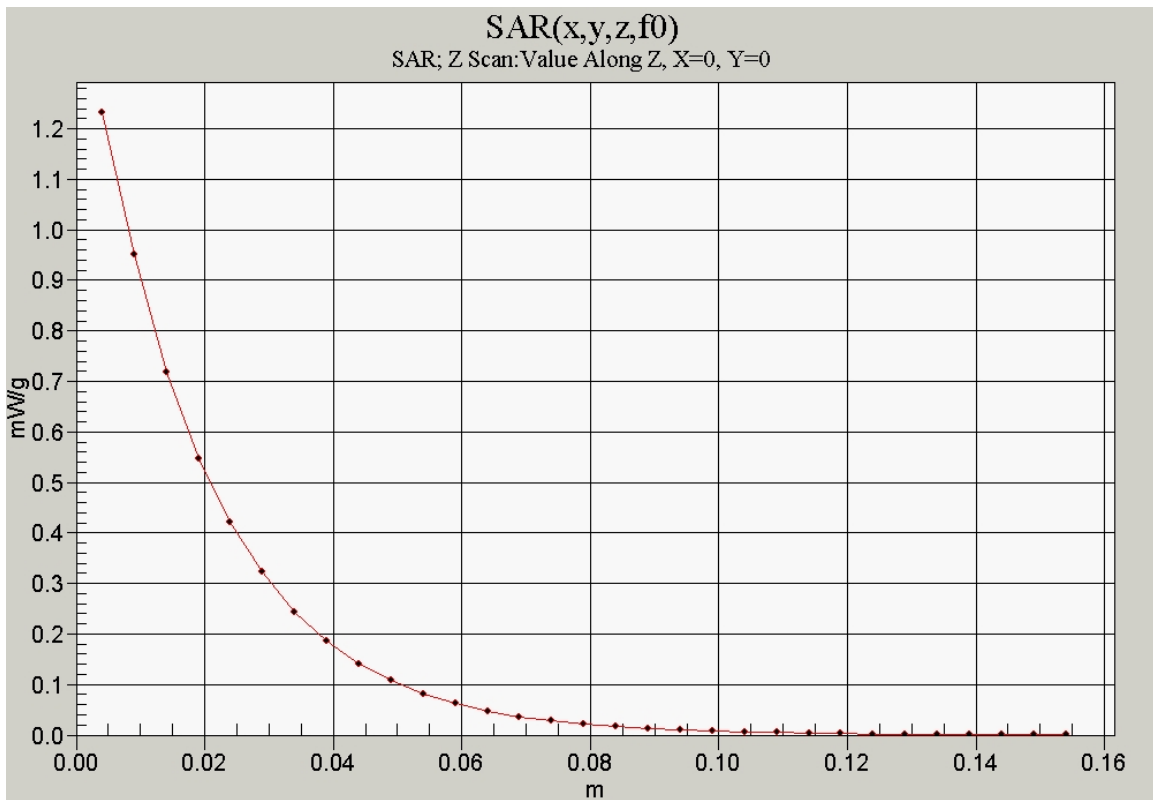
[Info: Interpolated medium parameters used for SAR evaluation.](#)

Maximum value of SAR (measured) = 1.29 mW/g



0 dB = 1.29mW/g





Test Laboratory: Kyocera

**KX16 #0823, CDMA-1900 ch600 Flat 25mm Air Space with Phone Closed and Standard Battery**

Communication System: CDMA-1900, Frequency: 1880 MHz, Duty Cycle: 1:1

Medium: M1800, Medium parameters used:  $f = 1880$  MHz;  $\sigma = 1.45$  mho/m;  $\epsilon_r = 53.7$ ;  $\rho = 1000$  kg/m<sup>3</sup>

Phantom: SAM 12, Phantom section: Flat Section

**DASY4 Configuration:**

Probe: ET3DV6 - SN1712, ConvF(4.41, 4.41, 4.41), Calibrated: 7/18/2005

Sensor-Surface: 4mm (Mechanical And Optical Surface Detection),

Electronics: DAE4 Sn530, Calibrated: 1/4/2005

Measurement SW: DASY4, V4.4 Build 3

Postprocessing SW: SEMCAD, V1.8 Build 159

**Temperature:**

Room T = 21.8 +/- 1 deg C, Liquid T = 22.0 +/- 1 deg C

**PCS Ch600/Zoom Scan (7x7x7)/Cube 0:** Measurement grid: dx=5mm, dy=5mm, dz=5mm

Reference Value = 15.6 V/m; Power Drift = -0.054 dB

Peak SAR (extrapolated) = 0.583 W/kg

**SAR(1 g) = 0.389 mW/g; SAR(10 g) = 0.250 mW/g**

Maximum value of SAR (measured) = 0.417 mW/g

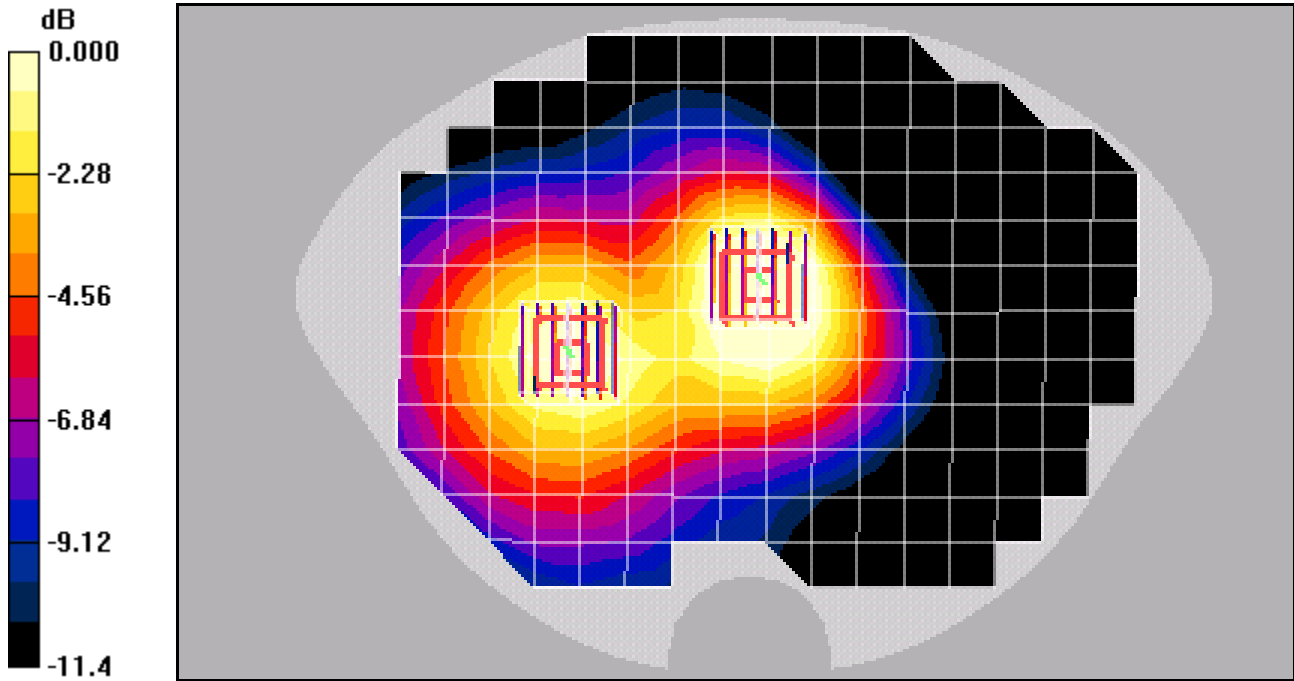
**PCS Ch600/Zoom Scan (7x7x7)/Cube 1:** Measurement grid: dx=5mm, dy=5mm, dz=5mm

Reference Value = 15.6 V/m; Power Drift = -0.054 dB

Peak SAR (extrapolated) = 0.369 W/kg

**SAR(1 g) = 0.252 mW/g; SAR(10 g) = 0.169 mW/g**

Maximum value of SAR (measured) = 0.270 mW/g



0 dB = 0.270mW/g

Test Laboratory: Kyocera

### KX16 #0823, CDMA-1900 ch600 Flat Leather Case with Phone Closed and Standard Battery

Communication System: CDMA-1900, Frequency: 1880 MHz, Duty Cycle: 1:1

Medium: M1800, Medium parameters used:  $f = 1880$  MHz;  $\sigma = 1.45$  mho/m;  $\epsilon_r = 53.7$ ;  $\rho = 1000$  kg/m<sup>3</sup>

Phantom: SAM 12, Phantom section: Flat Section

#### DASY4 Configuration:

Probe: ET3DV6 - SN1712, ConvF(4.41, 4.41, 4.41), Calibrated: 7/18/2005

Sensor-Surface: 4mm (Mechanical And Optical Surface Detection),

Electronics: DAE4 Sn530, Calibrated: 1/4/2005

Measurement SW: DASY4, V4.4 Build 3

Postprocessing SW: SEMCAD, V1.8 Build 159

#### Temperature:

Room T = 21.8 +/- 1 deg C, Liquid T = 22.0 +/- 1 deg C

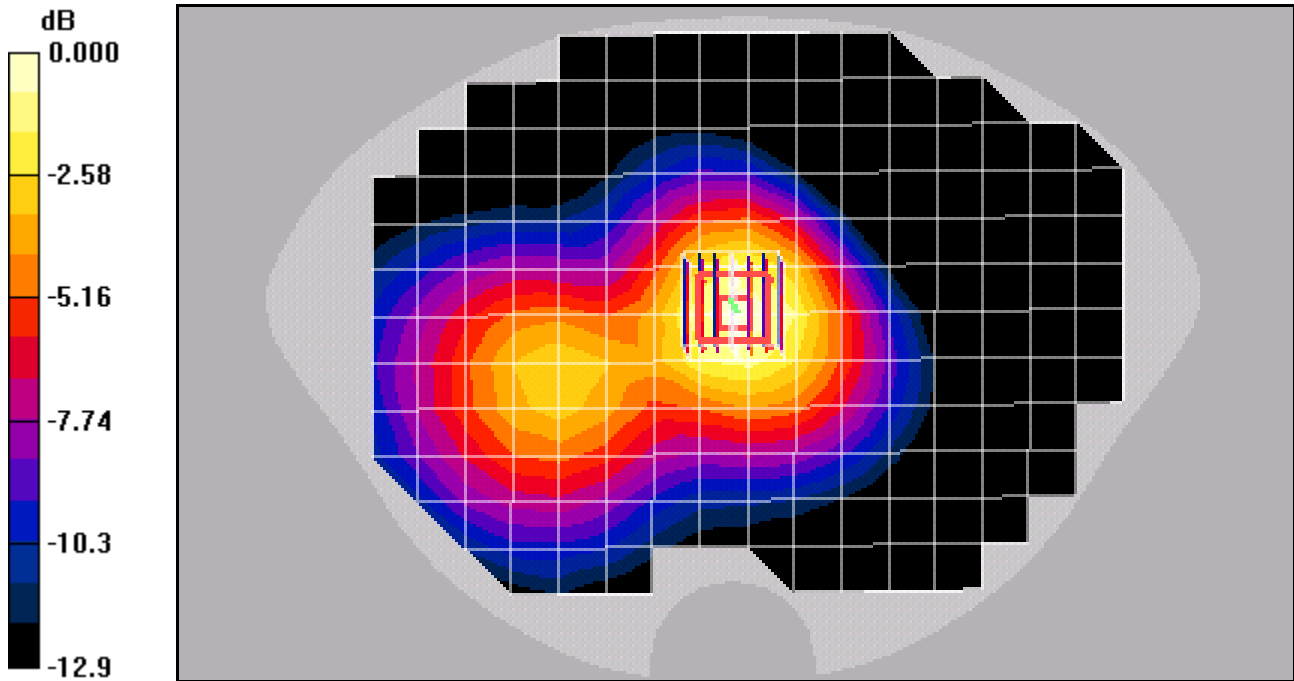
#### PCS Ch600/Zoom Scan (7x7x7)/Cube 0: Measurement grid: dx=5mm, dy=5mm, dz=5mm

Reference Value = 17.7 V/m; Power Drift = -0.156 dB

Peak SAR (extrapolated) = 0.612 W/kg

**SAR(1 g) = 0.400 mW/g; SAR(10 g) = 0.256 mW/g**

Maximum value of SAR (measured) = 0.434 mW/g



0 dB = 0.434mW/g

Test Laboratory: Kyocera

### KX16 #0823, CDMA-1900 ch600 Flat Holster with Phone Open and Extended Battery

Communication System: CDMA-1900, Frequency: 1880 MHz, Duty Cycle: 1:1

Medium: M1800, Medium parameters used:  $f = 1880$  MHz;  $\sigma = 1.45$  mho/m;  $\epsilon_r = 53.7$ ;  $\rho = 1000$  kg/m<sup>3</sup>

Phantom: SAM 12, Phantom section: Flat Section

**DASY4 Configuration:**

Probe: ET3DV6 - SN1712, ConvF(4.41, 4.41, 4.41), Calibrated: 7/18/2005

Sensor-Surface: 4mm (Mechanical And Optical Surface Detection),

Electronics: DAE4 Sn530, Calibrated: 1/4/2005

Measurement SW: DASY4, V4.4 Build 3

Postprocessing SW: SEMCAD, V1.8 Build 159

**Temperature:**

Room T = 21.8 +/- 1 deg C, Liquid T = 22.0 +/- 1 deg C

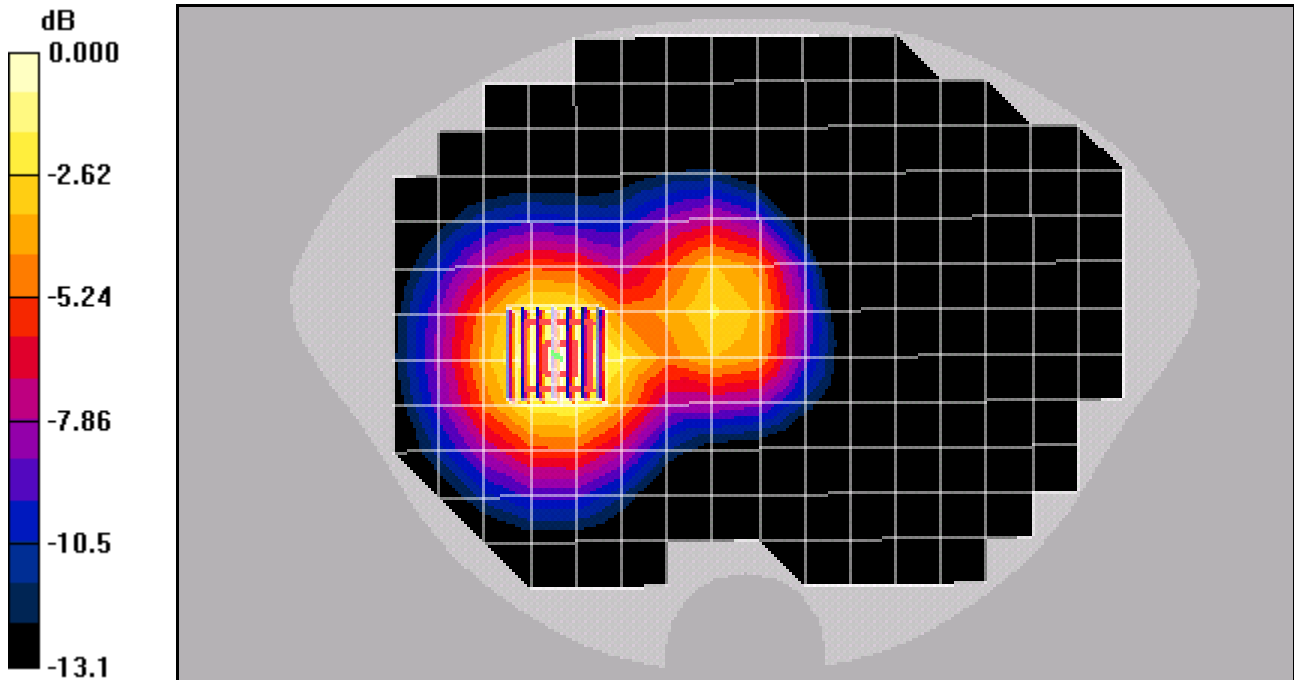
**PCS Ch600/Zoom Scan (7x7x7)/Cube 0:** Measurement grid: dx=5mm, dy=5mm, dz=5mm

Reference Value = 18.6 V/m; Power Drift = -0.059 dB

Peak SAR (extrapolated) = 1.14 W/kg

**SAR(1 g) = 0.777 mW/g; SAR(10 g) = 0.505 mW/g**

Maximum value of SAR (measured) = 0.837 mW/g



0 dB = 0.837mW/g

