

HAC_E_Dipole 835 MHz_CDMA Signal

DUT: HAC-Dipole 835 MHz; Type: D835V3; Serial: 1014

Communication System: CDMA Signal; Frequency: 835.02 MHz; Duty Cycle: 1:1

Medium parameters used: $\sigma = 0$ mho/m, $\epsilon_r = 1$; $\rho = 1000$ kg/m³

Phantom section: E Dipole Section

Measurement Standard: DAS4 (High Precision Assessment)

DASY4 Configuration:

- Probe: ER3DV6 - SN2339; ConvF(1, 1, 1); Calibrated: 3/11/2005
- Sensor-Surface: (Fix Surface)
- Electronics: DAE3 Sn500; Calibrated: 2/7/2005
- Phantom: HAC Test Arch; Type: SD HAC P01 BA;
- Measurement SW: DAS4, V4.5 Build 19;

E Scan - ER probe center 10mm above CD835 Dipole/Hearing Aid Compatibility Test (41x361x1):

Measurement grid: dx=5mm, dy=5mm

Maximum value of Total field (slot averaged) = 175.9 V/m

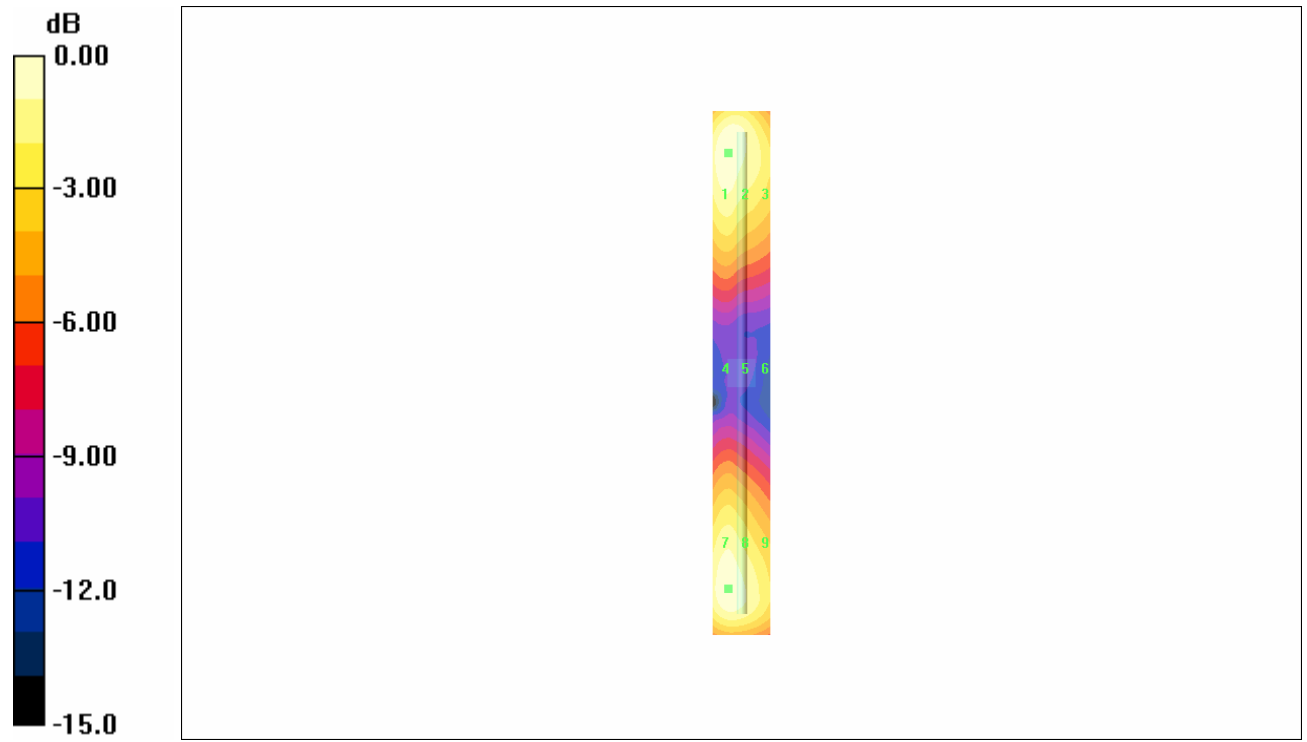
Hearing Aid Near-Field Category: M2 (AWF 0 dB)

E in V/m (Time averaged) E in V/m (Slot averaged)

| | | |
|--------------|--------------|--------------|
| Grid 1 | Grid 2 | Grid 3 |
| 175.9 | 175.1 | 151.1 |
| Grid 4 | Grid 5 | Grid 6 |
| 86.8 | 86.3 | 74.7 |
| Grid 7 | Grid 8 | Grid 9 |
| 174.6 | 174.0 | 150.0 |

| | | |
|--------------|--------------|--------------|
| Grid 1 | Grid 2 | Grid 3 |
| 175.9 | 175.1 | 151.1 |
| Grid 4 | Grid 5 | Grid 6 |
| 86.8 | 86.3 | 74.7 |
| Grid 7 | Grid 8 | Grid 9 |
| 174.6 | 174.0 | 150.0 |

| Category | AWF (dB) | Limits for E-Field Emissions (V/m) | Limits for H-Field Emissions (A/m) |
|----------|----------|------------------------------------|------------------------------------|
| M1 | 0 | 199.5 - 354.8 | 0.6 - 1.07 |
| | -5 | 149.6 - 266.1 | 0.45 - 0.8 |
| M2 | 0 | 112.2 - 199.5 | 0.34 - 0.6 |
| | -5 | 84.1 - 149.6 | 0.25 - 0.45 |
| M3 | 0 | 63.1 - 112.2 | 0.19 - 0.34 |
| | -5 | 47.3 - 84.1 | 0.15 - 0.25 |
| M4 | 0 | <63.1 | <0.19 |
| | -5 | <47.3 | <0.15 |



0 dB = 175.9V/m

HAC_E_Dipole 1880 MHz_CDMA Signal

DUT: HAC Dipole 1880 MHz; Type: CD1880V3; Serial: 1010

Communication System: CDMA PCS Band; Frequency: 1880 MHz; Duty Cycle: 1:1

Medium parameters used: $\sigma = 0$ mho/m, $\epsilon_r = 1$; $\rho = 1000$ kg/m³

Phantom section: E Dipole Section

Measurement Standard: DAS4 (High Precision Assessment)

DASY4 Configuration:

- Probe: ER3DV6 - SN2339; ConvF(1, 1, 1); Calibrated: 3/11/2005
- Sensor-Surface: (Fix Surface)
- Electronics: DAE3 Sn500; Calibrated: 2/7/2005
- Phantom: HAC Test Arch; Type: SD HAC P01 BA;
- Measurement SW: DAS4, V4.5 Build 19;

E Scan - ER probe center 10mm above CD1880 Dipole/Hearing Aid Compatibility Test (41x181x1):

Measurement grid: dx=5mm, dy=5mm

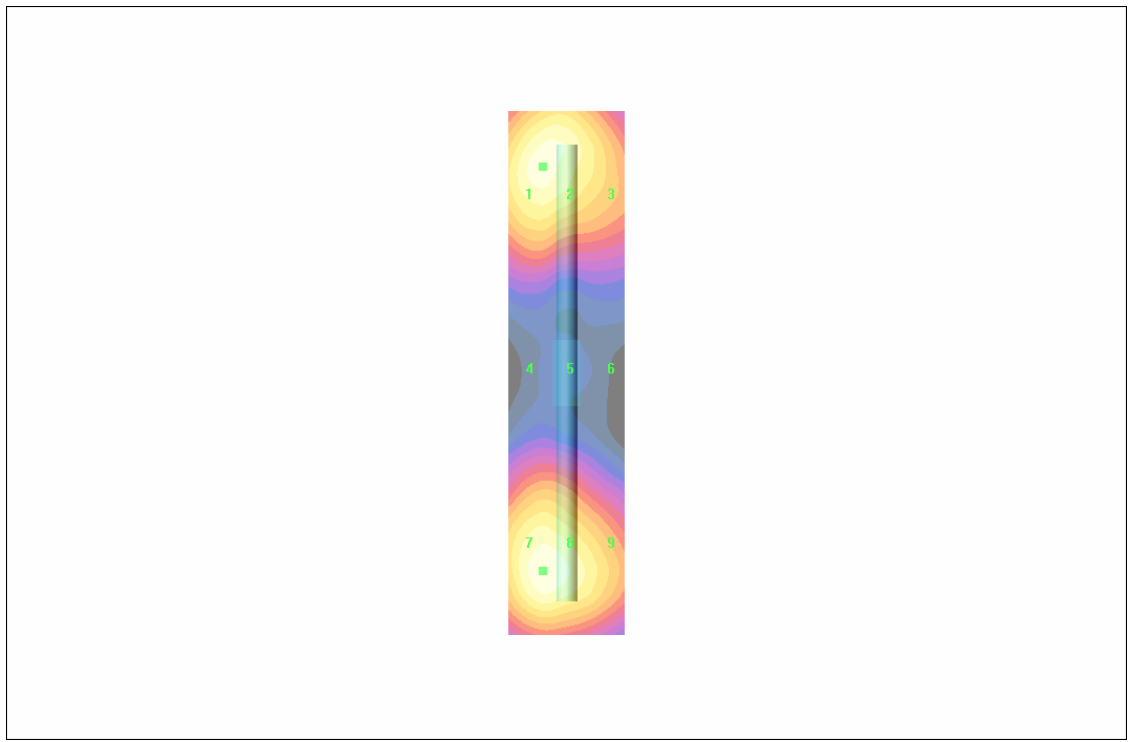
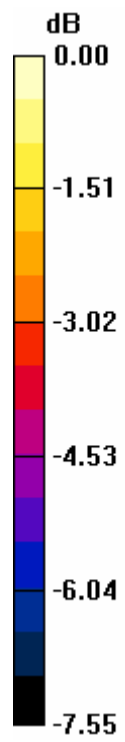
Maximum value of Total field (slot averaged) = 137.2 V/m

Hearing Aid Near-Field Category: M2 (AWF 0 dB)

E in V/m (Time averaged) E in V/m (Slot averaged)

| | | | | | |
|--------|--------|--------|--------|--------|--------|
| Grid 1 | Grid 2 | Grid 3 | Grid 1 | Grid 2 | Grid 3 |
| 135.2 | 134.8 | 119.5 | 135.2 | 134.8 | 119.5 |
| Grid 4 | Grid 5 | Grid 6 | Grid 4 | Grid 5 | Grid 6 |
| 82.8 | 82.8 | 74.0 | 82.8 | 82.8 | 74.0 |
| Grid 7 | Grid 8 | Grid 9 | Grid 7 | Grid 8 | Grid 9 |
| 137.2 | 137.2 | 121.4 | 137.2 | 137.2 | 121.4 |

| Category | AWF (dB) | Limits for E-Field Emissions (V/m) | Limits for H-Field Emissions (A/m) |
|----------|----------|------------------------------------|------------------------------------|
| M1 | 0 | 199.5 - 354.8 | 0.6 - 1.07 |
| | -5 | 149.6 - 266.1 | 0.45 - 0.8 |
| M2 | 0 | 112.2 - 199.5 | 0.34 - 0.6 |
| | -5 | 84.1 - 149.6 | 0.25 - 0.45 |
| M3 | 0 | 63.1 - 112.2 | 0.19 - 0.34 |
| | -5 | 47.3 - 84.1 | 0.15 - 0.25 |
| M4 | 0 | <63.1 | <0.19 |
| | -5 | <47.3 | <0.15 |



0 dB = 137.2V/m

Test Laboratory: Compliance Certification Services

HAC_H_Dipole 835 MHz_CDMA Signal

DUT: HAC-Dipole 835 MHz; Type: D835V3; Serial: 1014

Communication System: CDMA Cell Band; Frequency: 835.02 MHz; Duty Cycle: 1:1

Medium parameters used: $\sigma = 0$ mho/m, $\epsilon_r = 1$; $\rho = 1$ kg/m³

Phantom section: H Dipole Section

Measurement Standard: DAS4 (High Precision Assessment)

DASY4 Configuration:

- Probe: H3DV6 - SN6157; ; Calibrated: 3/11/2005
- Sensor-Surface: (Fix Surface)
- Electronics: DAE3 Sn500; Calibrated: 2/7/2005
- Phantom: HAC Test Arch; Type: SD HAC P01 BA; Serial: 1011
- Measurement SW: DAS4, V4.5 Build 19; Postprocessing SW: SEMCAD, V1.8 Build 146

H Scan - H3DV6 probe center 10mm above CD835 Dipole 2/Hearing Aid Compatibility Test (41x361x1): Measurement grid: dx=5mm, dy=5mm

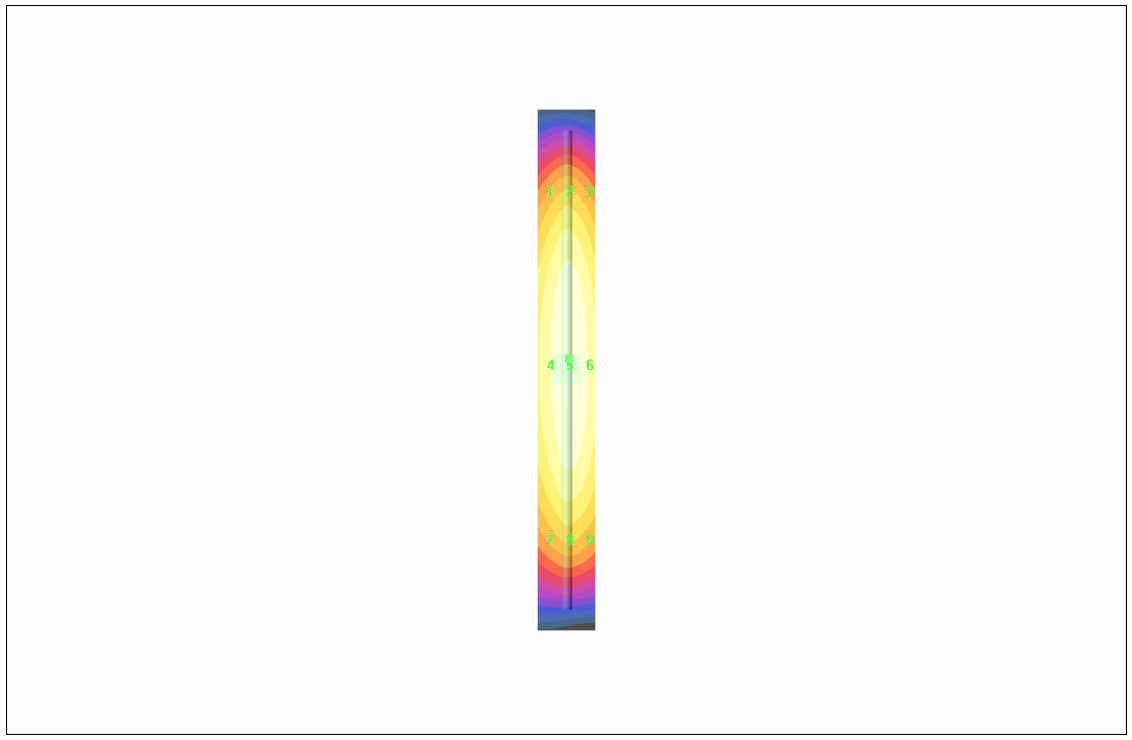
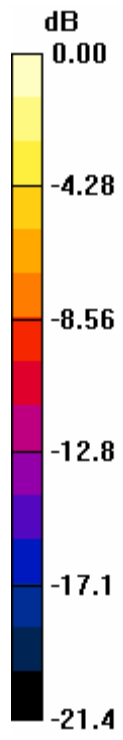
Maximum value of Total field (slot averaged) = 0.488 A/m

Hearing Aid Near-Field Category: M2 (AWF 0 dB)

H in A/m (Time averaged) H in A/m (Slot averaged)

| | | | | | |
|--------|--------|--------|--------|--------|--------|
| Grid 1 | Grid 2 | Grid 3 | Grid 1 | Grid 2 | Grid 3 |
| 0.402 | 0.448 | 0.428 | 0.402 | 0.448 | 0.428 |
| Grid 4 | Grid 5 | Grid 6 | Grid 4 | Grid 5 | Grid 6 |
| 0.436 | 0.488 | 0.470 | 0.436 | 0.488 | 0.470 |
| Grid 7 | Grid 8 | Grid 9 | Grid 7 | Grid 8 | Grid 9 |
| 0.390 | 0.436 | 0.421 | 0.390 | 0.436 | 0.421 |

| Category | AWF (dB) | Limits for E-Field Emissions (V/m) | Limits for H-Field Emissions (A/m) |
|----------|----------|------------------------------------|------------------------------------|
| M1 | 0 | 199.5 - 354.8 | 0.6 - 1.07 |
| | -5 | 149.6 - 266.1 | 0.45 - 0.8 |
| M2 | 0 | 112.2 - 199.5 | 0.34 - 0.6 |
| | -5 | 84.1 - 149.6 | 0.25 - 0.45 |
| M3 | 0 | 63.1 - 112.2 | 0.19 - 0.34 |
| | -5 | 47.3 - 84.1 | 0.15 - 0.25 |
| M4 | 0 | <63.1 | <0.19 |
| | -5 | <47.3 | <0.15 |



0 dB = 0.488A/m

Test Laboratory: Compliance Certification Services

HAC_H-Dipole 1880 MHz_CDMA Signal

DUT: HAC Dipole 1880 MHz; Type: CD1880V3; Serial: 1010

Communication System: CDMA PCS Band; Frequency: 1880 MHz; Duty Cycle: 1:1

Medium parameters used: $\sigma = 0$ mho/m, $\epsilon_r = 1$; $\rho = 1$ kg/m³

Phantom section: H Dipole Section

Measurement Standard: DAS4 (High Precision Assessment)

DASY4 Configuration:

- Probe: H3DV6 - SN6157; ; Calibrated: 3/11/2005
- Sensor-Surface: (Fix Surface)
- Electronics: DAE3 Sn500; Calibrated: 2/7/2005
- Phantom: HAC Test Arch; Type: SD HAC P01 BA; Serial: 1011
- Measurement SW: DAS4, V4.5 Build 19; Postprocessing SW: SEMCAD, V1.8 Build 146

H Scan - H3DV6 probe center 10mm above CD1880 Dipole/Hearing Aid Compatibility Test (41x181x1): Measurement grid: dx=5mm, dy=5mm

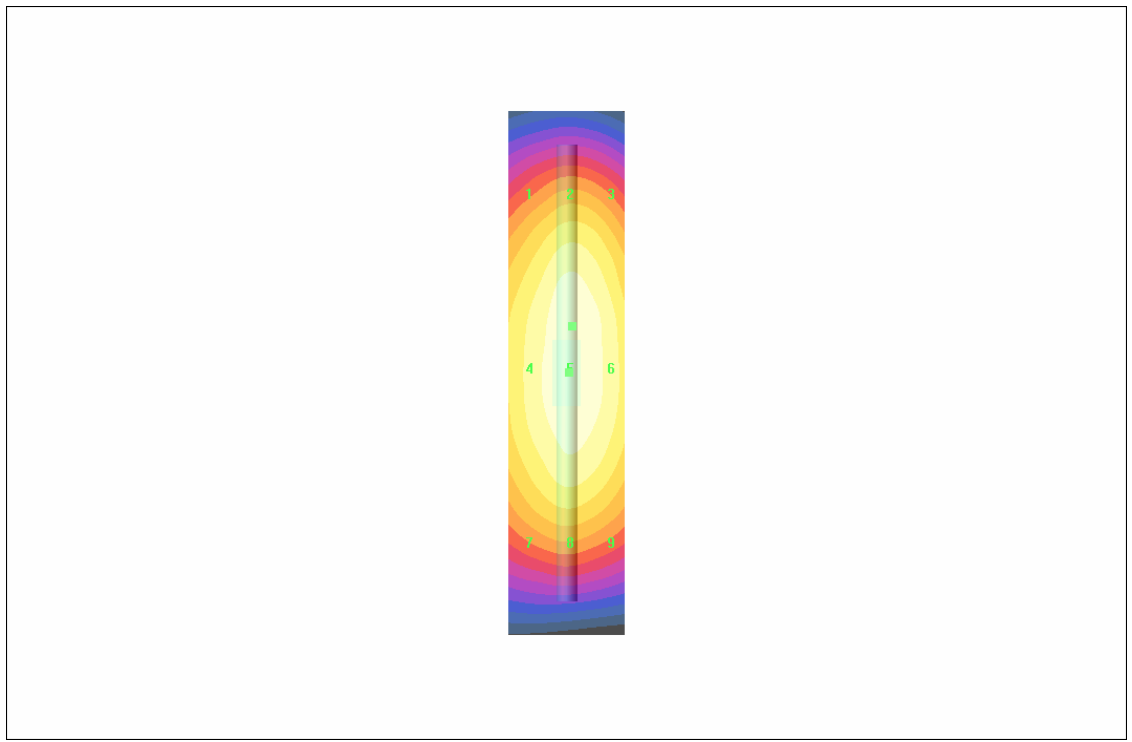
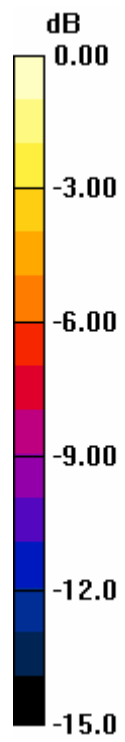
Maximum value of Total field (slot averaged) = 0.484 A/m

Hearing Aid Near-Field Category: M2 (AWF 0 dB)

H in A/m (Time averaged) H in A/m (Slot averaged)

| | | | | | |
|--------|--------|--------|--------|--------|--------|
| Grid 1 | Grid 2 | Grid 3 | Grid 1 | Grid 2 | Grid 3 |
| 0.392 | 0.447 | 0.428 | 0.392 | 0.447 | 0.428 |
| Grid 4 | Grid 5 | Grid 6 | Grid 4 | Grid 5 | Grid 6 |
| 0.435 | 0.484 | 0.465 | 0.435 | 0.484 | 0.465 |
| Grid 7 | Grid 8 | Grid 9 | Grid 7 | Grid 8 | Grid 9 |
| 0.386 | 0.425 | 0.412 | 0.386 | 0.425 | 0.412 |

| Category | AWF (dB) | Limits for E-Field Emissions (V/m) | Limits for H-Field Emissions (A/m) |
|----------|----------|------------------------------------|------------------------------------|
| M1 | 0 | 199.5 - 354.8 | 0.6 - 1.07 |
| | -5 | 149.6 - 266.1 | 0.45 - 0.8 |
| M2 | 0 | 112.2 - 199.5 | 0.34 - 0.6 |
| | -5 | 84.1 - 149.6 | 0.25 - 0.45 |
| M3 | 0 | 63.1 - 112.2 | 0.19 - 0.34 |
| | -5 | 47.3 - 84.1 | 0.15 - 0.25 |
| M4 | 0 | <63.1 | <0.19 |
| | -5 | <47.3 | <0.15 |



0 dB = 0.484A/m