

Exhibit 8:
OVFKWC-KE423 Internal Photos (Blade) Family

PRODUCT DESCRIPTION.....	2
MECHANICAL HOUSING - OVFKWC-KE423 (BLADE) FAMILY	3
INSIDE FRONT AND REAR HOUSING	3
INSIDE FRONT HOUSING	4
KEYPAD	5
PCB SIDE 1 - OVFKWC-KE423 (BLADE) FAMILY.....	6
PCB SIDE 1	6
PCB SIDE 1 (WITH SHIELD CANS)	7
PCB SIDE 1 (SHIELD CANS REMOVED)	8
PCB SIDE 2 -OVFKWC-KE423 (BLADE) FAMILY	9
PCB SIDE 2 (WITH SHIELD CANS)	9
PCB SIDE 2 (WITH SHIELD CANS REMOVED)	10

Product Description

The phones OVFKWC-KE423 are PCS 1XRTT products. Models have integrated Assisted GPS software feature enabled to meet the emergency location requirements of the FCC's E911 Phase II mandate. The PCS architecture is defined as 1900MHz (PCS CDMA).

All models included in the OVFKWC-KE423 filing use the same antenna and have identical PCB layouts in regards to the RF Circuitry, Basic Frequency Determining and Stabilization Circuitry, Basic Modulator Circuit, Transmitter Active Devices, and Tuning Targets. The only differences between models are the choice of color or greyscale LCD, and the software applications supported (GPS, Brew, WAP, etc.). See product matrix in Figure 1 below.

The phone is designed in compliance with the technical specifications for compatibility of mobile and base stations in the Cellular Radio telephone service contained in "Cellular System Mobile Station -Land Station Compatibility Specification" as specified in OET Bulletin 53 and TIA Standards

The phone will support certain CDMA2000 radio-configurations (RC) as describes in Exhibit 1 (operation description).


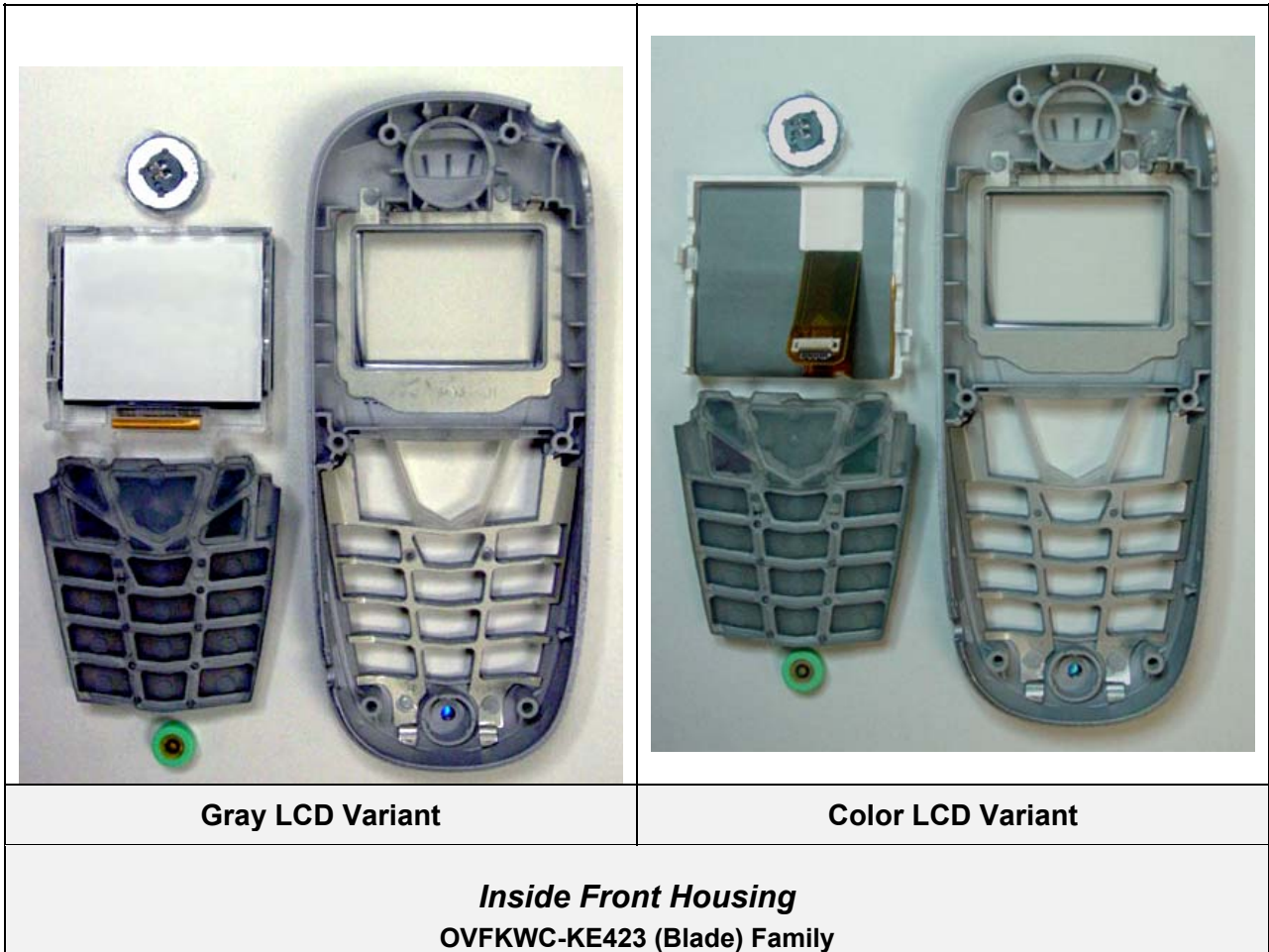
	
	Blade
KWC PCS/ Greyscale	KE423
KWC PCS/ Color/ Brew	KX423

Figure 1 OVFKWC-KE423 Product Matrix

Mechanical Housing - OVFKWC-KE423 (Blade) Family

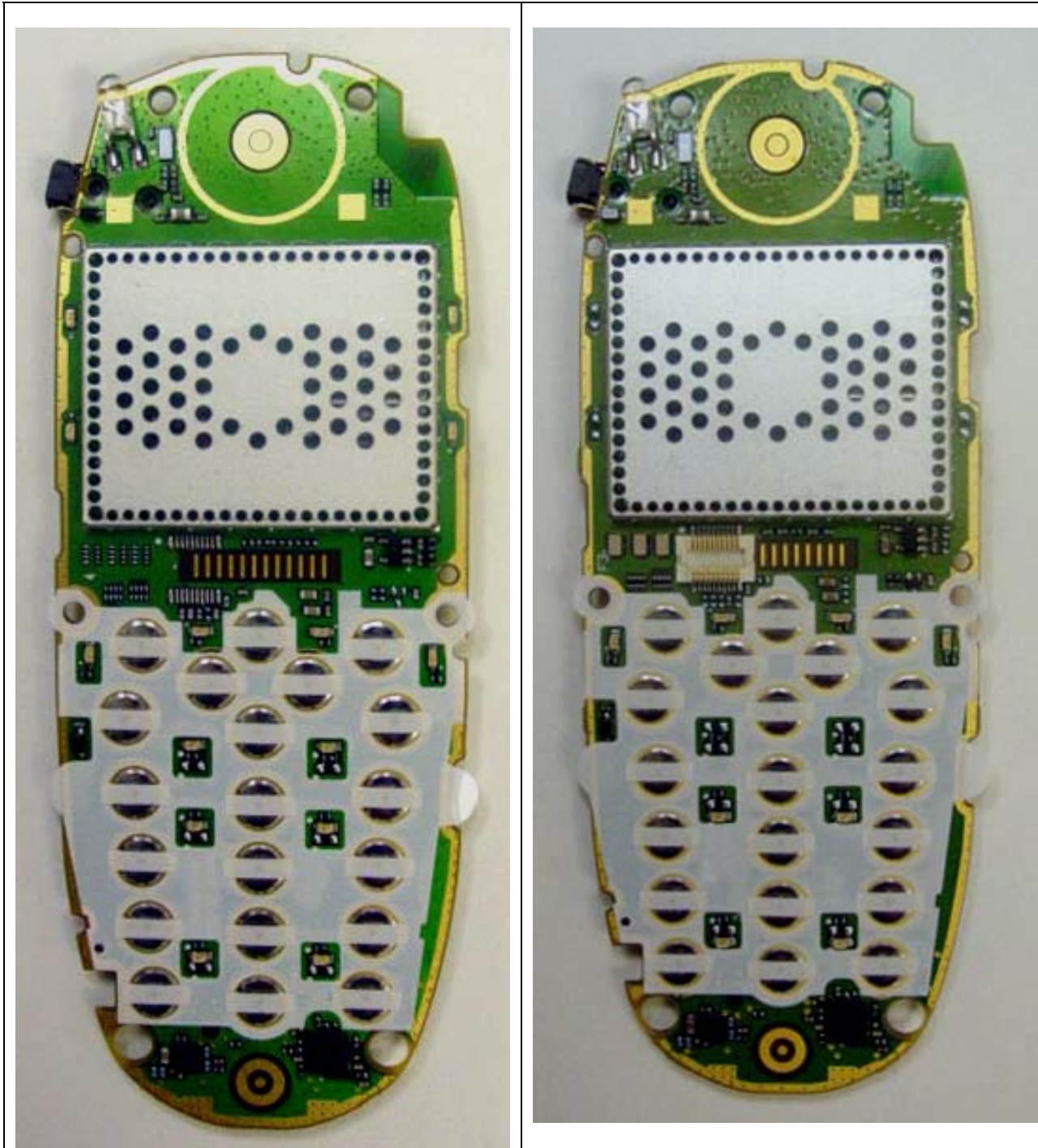





Keypad
OVFKWC-KE423 (Blade) Family

PCB Side 1 - OVFKWC-KE423 (Blade) Family**Gray LCD Variant****Color LCD Variant**

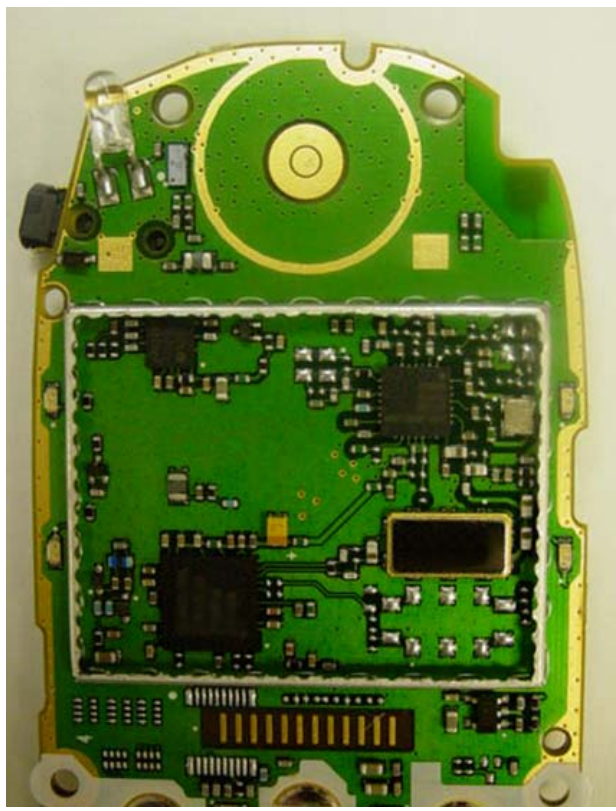

PCB Side 1
OVFKWC-KE423 (Blade) Family

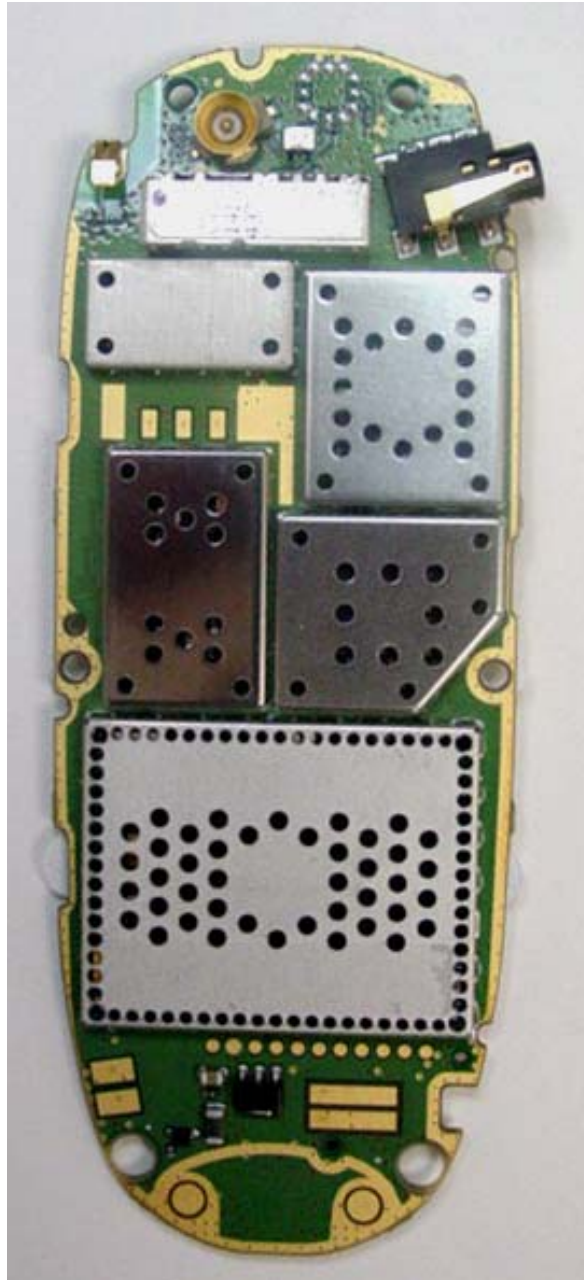


Gray LCD Variant

Color LCD Variant

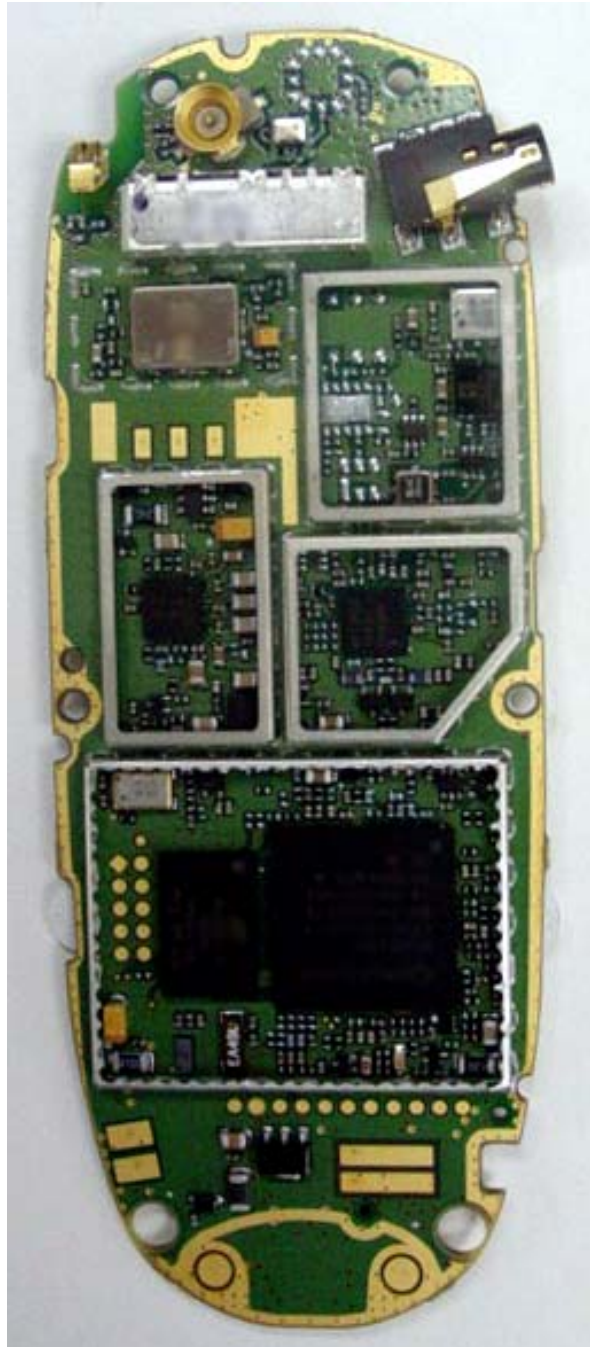
PCB Side 1 (with Shield Cans)
OVFKWC-KE423 (Blade) Family

	
<p>Gray LCD Variant</p>	<p>Color LCD Variant</p>
<p><i>PCB Side 1 (Shield Cans Removed)</i> OVFKWC-KE423 (Blade) Family</p>	

PCB Side 2 –OVFKWC-KE423 (Blade) Family

PCB Side 2 is the same for both gray and color LCD model variants

PCB Side 2 (with Shield Cans)
OVFKWC-KE423 (Blade) Family



PCB Side 2 is the same for both gray and color LCD model variants

PCB Side 2 (with Shield Cans removed)
OVFKWC-KE423 (Blade) Family