

## Test Report

From

**Kyocera Wireless Corp**

**Dual-Band Tri-mode AMPS/CDMA Cellular Phone**

<b>FCC Part 22 &amp; 24 Certification IC RSS-129 &amp; 133</b>	
FCC ID:	<b>OVFKWC-K4X4</b>
Model:	<b>K404A (Rave), K430 (Rave) Family, K450 (Phantom) Family, K480 (Aktiv) Family, and K490 (Energi) Family</b>

### STATEMENT OF COMPLIANCE

Kyocera Wireless Corp declares under its sole responsibility that the product, FCC ID: OVFKWC-K4X4 to which this declaration relates, is in conformity with the appropriate General Population/Uncontrolled RF exposure standards, recommendations and guidelines. It also declares that the product was tested in accordance with the appropriate measurement standards, guidelines and recommended practices.

Any deviations from these standards, guidelines and recommended practices are noted: NONE.

Date of Test:	May 21, 2004 – June 22, 2004
Test performed by:	Kyocera Wireless Corp 10300 Campus Point Drive CA 92121
Report Prepared by:	Patrick Bowen, Staff Engineer
Report Reviewed by:	C. K. Li, Engineer, Senior Staff/Manager

## Table of Contents

<b>1</b>	<b>INTRODUCTION</b> .....	<b>3</b>
<b>2</b>	<b>EQUIPMENT UNDER TEST (EUT)</b> .....	<b>3</b>
<b>3</b>	<b>ACCESSORIES:</b> .....	<b>5</b>
<b>4</b>	<b>SAR TEST RESULT SUMMARY</b> .....	<b>6</b>
4.1	MAXIMUM RESULTS FOUND DURING SAR EVALUATION .....	6
4.2	HEAD CONFIGURATION .....	6
4.3	BODY WORN CONFIGURATION (WITH KWC BODY WORN ACCESSORIES).....	6
4.4	MEASUREMENT UNCERTAINTY .....	6
<b>5</b>	<b>TEST CONDITIONS</b> .....	<b>7</b>
5.1	AMBIENT CONDITIONS .....	7
5.2	RF CHARACTERISTICS OF THE TEST SITE .....	7
5.3	TEST SIGNAL, FREQUENCIES AND OUTPUT POWER.....	7
5.4	DEVICE TEST CONDITIONS.....	7
<b>6</b>	<b>DESCRIPTION OF THE TEST EQUIPMENT</b> .....	<b>8</b>
6.1	DOSIMETRIC SYSTEM .....	8
6.2	ADDITIONAL EQUIPMENT NEEDED IN VALIDATION .....	8
6.3	TISSUE STIMULANTS.....	9
6.4	PHANTOMS DESCRIPTION .....	9
6.5	ISOTROPIC E-FIELD PROBE.....	10
<b>7</b>	<b>SYSTEM VALIDATION</b> .....	<b>11</b>
<b>8</b>	<b>DESCRIPTION OF THE TEST PROCEDURE</b> .....	<b>13</b>
8.1	TEST POSITIONS .....	13
8.1.1	<i>Initial Ear Position</i> .....	13
8.1.2	<i>Cheek Position</i> .....	14
8.1.3	<i>Tilt Position</i> .....	14
8.1.3	<i>Body Worn Configuration</i> .....	15
8.2	SCAN PROCEDURES .....	15
8.3	SAR AVERAGING METHODS .....	15
<b>9</b>	<b>MEASUREMENT UNCERTAINTY</b> .....	<b>16</b>
<b>10</b>	<b>TEST DATA</b> .....	<b>17</b>
10.1	HEAD SAR TEST RESULTS .....	17
10.2	BODY WORN SAR TEST RESULT.....	19
<b>11</b>	<b>TEST SETUP PHOTOS</b> .....	<b>21</b>
	<b>APPENDIX A: VALIDATION TEST PRINTOUT</b> .....	<b>24</b>
	<b>APPENDIX B: SAR DISTRIBUTION PRINTOUT</b> .....	<b>54</b>
	<b>APPENDIX C: PROBE CALIBRATION PARAMETERS</b> .....	<b>54</b>

**1 INTRODUCTION**

This test report describes an environmental evaluation measurement of specific absorption rate (SAR) distribution in simulated human head tissues exposed to radio frequency (RF) radiation from a wireless portable device manufactured by Kyocera Wireless Corp. (KWC). These measurements were performed for compliance with the rules and regulations of the U.S. Federal Communications Commission (FCC). The testing was performed in accordance with FCC OET Bulletin 65 Supplement C (01/01) and IEEE P1528-200X Draft CD1.0.

**2 EQUIPMENT UNDER TEST (EUT)**

The wireless device is described as follows:

<b>FCC ID:</b>	OVFKWC-K4X4			
<b>Product:</b>	Dual-Band Tri-mode Cellular Phone			
<b>Trade Name:</b>	Kyocera Wireless Corp			
<b>Model Number:</b>	K404A, K434L, K434N, K434LC, K434XLC, K434NC, K434XNC, K434MC, K434XMC, K454L, K454N, K454LC, K454XLC, K454NC, K454XNC, K454MC, K454XMC, K484L, K484N, K484LC, K484XLC, K484NC, K484XNC, K484MC, K484XMC, K494LC, K494XLC, K494NC, K494XNC, K494MC, K494XMC			
<b>EUT S/N:</b>	7A-X----0W9LHD (model K494LC worse case body Part 22) 7A-X----0W9LWQ (model K434LC worse case head Part 22, and worse case head and body Part 24)			
<b>Type:</b>	<input type="checkbox"/> Identical Prototype, <input checked="" type="checkbox"/> Pre-production			
<b>Device Category:</b>	Portable			
<b>RF Exposure Environment:</b>	General Population / Uncontrolled			
<b>Antenna Type:</b>	Fixed Stubby	<b>Antenna Location:</b>	Right/Rear	
<b>Detachable Antenna:</b>	Yes	<b>Antenna Dimensions:</b>	22.9mm (L) x 9.5mm (W)	
<b>External Input:</b>	Audio/Digital Data			
<b>Quantity:</b>	Quantity production is planned			
<b>FCC Rule Parts:</b>	§22H	§22H	§22.901(d)	§24H
<b>Modes:</b>	800 AMPS	800 CDMA	800 CDMA1X	1900 CDMA
<b>Multiple Access Scheme:</b>	FDMA	CDMA	CDMA	CDMA
<b>Duty Cycle:</b>	1:1	1:1	1:1	1:1
<b>TX Frequency (MHz):</b>	824 – 849	824 – 849	824 – 849	1850 - 1910
<b>Emission Designators:</b>	40K0F1D	40K0F8W	1M25F9W	1M25F9W
<b>Max. Output Power (W)</b>	0.302 ERP	0.288 ERP		0.437 EIRP

The phones OVFKWC-K4X4 are Tri-mode Dual-Band 1XRTT products. Models that contain the letter “L” have integrated Assisted GPS software feature enabled to meet the emergency location requirements of the FCC’s E911 Phase II mandate. The Tri-mode architecture is defined as 1900MHz (PCS CDMA), 800MHz (cellular CDMA and AMPS).

All models included in the OVFKWC-K4X4 filing use the same antenna and have identical PCB layouts in regards to the RF Circuitry, Basic Frequency Determining and Stabilization Circuitry, Basic Modulator Circuit, Transmitter Active Devices, and Tuning Targets. The only differences between models are the mechanical design of each model family’s front housings, choice of color or greyscale LCD, and software applications supported (GPS, Brew, WAP, etc.). See product matrix in Figure 2.1 below.

The phone is designed in compliance with the technical specifications for compatibility of mobile and base stations in the Cellular Radio telephone service contained in “Cellular System Mobile Station -Land Station Compatibility Specification” as specified in OET Bulletin 53 and TIA Standards

The phone will support certain CDMA2000 radio-configurations (RC) as describes in Exhibit 1 (operation description).

					
	<b>Phantom K450</b>	<b>Rave K404</b>	<b>Rave K430</b>	<b>Aktiv K480</b>	<b>Energi K490</b>
	<b>Non-BREW / BREW</b>		<b>Non-BREW / BREW</b>	<b>Non-BREW / BREW</b>	<b>Non-BREW / BREW</b>
KWC Trimode/GPS/Greyscale	K454L		K434L	K484L	
KWC Trimode/no GPS/Greyscale	K454N		K434N	K484N	
KWC Trimode/GPS/Color	K454LC / K454XLC	K404A	K434LC / K434XLC	K484LC / K484XLC	K494LC / K494XLC
KWC Trimode/no GPS/Color	K454NC / K454XNC		K434NC / K434XNC	K484NC / K484XNC	K494NC / K494XNC
KWC Trimode/GPS/WAP 2.0	K454MC / K454XMC		K434MC / K434XMC	K484MC / K484XMC	K494MC / K494XMC

Figure 2.1 OVFKWC-K4X4 Product Matrix

**3 ACCESSORIES:****KWC Battery Model: TXBAT10009 (3.7V)**

There is only one battery option available to operate the phone. All measurements were done with production batteries.

**Kyocera Phone Case Model: TXLCC10042B****Kyocera Belt Clip Model: TXLCC10047B****Kyocera Sport Clip Model: TXLCC10045B**

#### 4 SAR TEST RESULT SUMMARY

This device has been tested for localised specific absorption rate (SAR) for uncontrolled environment/general population exposure limits specified in ANSI/IEEE Std. C95.1 ~ 1992 and has been tested in accordance with the measurement procedures specified in IEEE P1528-200X Draft 6.5. Normal antenna operating positions were incorporated, with the device transmitting at frequencies consistent with normal usage of the device. All hardware configurations were tested and the worse case results are summarised in the report below. The devices have been shown capable of compliance for localised specific absorption rate (SAR) for uncontrolled environment/general population exposure limits specified in ANSI/IEEE std. C95.1-1992.

##### 4.1 Maximum Results Found during SAR Evaluation

The equipment is deemed to fulfil the requirements if the measured values are less than or equal to the limit.

##### 4.2 Head Configuration

Worse-Case Model	Mode	Ch/f(MHz)	Conducte d Power (dBm)	Device Position	Measured (mW/g)	Result
K484L	AMPS	383 (836.5)	25.08	Left Cheek	1.32	<b>PASSED</b>
K434LC	CDMA-800	383(836.49)	25.10	Left Cheek	1.37	<b>PASSED</b>
K434LC	CDMA-1900	1175(1908.75)	23.08	Left Cheek	1.36	<b>PASSED</b>

##### 4.3 Body Worn Configuration (with KWC body worn accessories)

Worse-Case Model	Mode	Ch/f(MHz)	Conducte d Power (dBm)	Device Position	Measured (mW/g)	Result
K434L	AMPS	383 (836.5)	25.13	Waist level	0.61	<b>PASSED</b>
K494LC	CDMA-800	383 (836.5)	25.10	Waist level	0.66	<b>PASSED</b>
K434LC	CDMA-1900	600(1880.00)	23.00	Waist level	0.47	<b>PASSED</b>

##### 4.4 Measurement Uncertainty

Combined Uncertainty (Assessment & Source)	± 10.32 %
Extended Uncertainty (k=2)	± 20.6 %

## 5 TEST CONDITIONS

### 5.1 Ambient Conditions

All tests were performed under the following environmental conditions:

<b>Ambient Temperature:</b>	22 ± 1 Degrees C
<b>Tissue simulating liquid temperature:</b>	22 ± 1 Degrees C
<b>Humidity:</b>	38 %
<b>Pressure:</b>	1015 mB

### 5.2 RF characteristics of the test site

All SAR measurements were performed inside a shielded room that provide isolation from external EM fields.

The E-field probes of the DASY 4 system are capable of detecting signals as low as 5 $\mu$ W/g in the liquid dielectric, and so external fields are minimised by the shielded room, leaving the phone as the dominate radiation source. 2 two-foot square ferrite panels are placed on the floor of the room beneath the phantom area of the DASY system to minimise reflected energy that would otherwise re-enter the phantom and combine constructively or destructively with the desired fields. These ferrite panels provide roughly 12 to 13 dB of attenuation in the frequency range of 900 MHz, and 7 to 8 dB of attenuation in the frequency range of 1.9 GHz.

### 5.3 Test Signal, Frequencies and Output Power

The device was controlled by using Kyocera Wireless Phone Support Toolkit, Test Code Controller.

In all operating bands, the measurements were performed on low, mid and high channels.

The phone was set to nominal maximum power level during all tests and at the beginning of the each test. Radiated power output was measured in KWC antenna range, fully an-echoic chamber from the same unit that was used in SAR testing.

DASY4 system measures power drift during SAR testing by comparing E-field in the same location at the beginning and at the end of measurement. These records were used to monitor stability of power output.

### 5.4 Device Test Conditions

The EUT was tested with a fully charged standard battery as supplied with the handset. Conducted RF power measurements were performed before and after each SAR measurements to confirm the output power.

## 6 DESCRIPTION OF THE TEST EQUIPMENT

### 6.1 Dosimetric System

The measurements were performed with an automated near-field scanning system, DASY4, manufactured by Schmid & Partner Engineering AG (SPEAG) of Zurich, Switzerland. The system is comprised of high precision robot, robot controller, computer, near-field probe, probe alignment sensor and the SAM phantom containing brain or muscle equivalent material. The overall RSS uncertainty of the measurement system is  $\pm 10.32\%$  with an expanded uncertainty of  $\pm 20.5\%$  ( $K=2$ ). The measurement uncertainty budget is given in section 6. Below is a list of the calibrated equipment used for the measurements:

Test Equipment	Serial Number	Cal. Due Date
DASY4 DAE3 V1	493	11-25-04
E-field Probe ET3DV6	1663	10-10-04
Dipole Validation kit, D835V2	453	03-16-06
DASY4 DAE3 V1	530	12-22-04
E-field Probe ET3DV6	1712	10-10-04
Dipole Validation kit, D1900V2	5D005	03-17-06

*The calibration records of E-field probe are attached in Appendix C.*

### 6.2 Additional equipment needed in validation

Test Equipment	Serial Number	Cal. Due Date
Signal Generator, HP E4421B	US38440337	04-08-05
Power meter, Giga-tronics 8541C	18332573	10-14-04
Power Sensor, Giga-tronics 80601A	1831178	03-23-05
Signal Generator, HP 8642B	3034A03318	07-01-04
Power meter, Giga-tronics 8541C	1833542	07-10-04
Power Sensor, Giga-tronics 80601A	1831867	03-10-05
Vector Network Analyzer, Agilent 8753C	3410A05046	08-06-04
Dielectric Probe Kit, HP 85070B	3033A03145	09-30-04
Thermometer	--	--



**6.3 Tissue Stimulants**

All dielectric parameters of tissue stimulants were measured within 24 hours of SAR measurements. The depth of the tissue stimulant in the ear reference point and flat reference point of the phantom were at least 15cm during all the tests.

The list of ingredients and the percent composition used for the Head and Muscle tissue simulates are listed in the table below:

<i><b>Ingredient</b></i>	<b>1900 MHz</b>	
	<i><b>HEAD</b></i>	<i><b>MUSCLE</b></i>
Water	54%	69.91%
Cellulose	--	--
Glycol monobutyl	44.91%	29.96%
Sugar	--	--
Preventol	--	--
Salt	0.21%	0.13%


The ingredients above are adopted from Application Note: Recipes for Head/Muscle Tissue Simulating Liquid by SPEAG.

**6.4 Phantoms Description**

SAM v4.0 phantom, manufactured by SPEAG, was used during the measurement. It has fiberglass shell integrated in a wooden table. The shape of the shell corresponds to the phantom defined in IEEE 1528-200X. It enables the dosimetric evaluation of left and right hand phone usage as well as body mounted usage at the flat phantom region. Reference markings on the phantom allow the complete set-up of all predefined phantom positions and measurement grids by manually teaching three points in the robot.

The thickness of phantom shell is 2mm except for the ear, where an integrated ear spacer provides 6mm spacing from the tissue boundary. Manufacturer reports tolerance in shell thickness to be  $\pm 0.1$ mm.

6.5 Isotropic E-Field Probe

<b>Model</b>	<ul style="list-style-type: none"> <li>ET3DV6</li> </ul> 
<b>Construction</b>	<ul style="list-style-type: none"> <li>Symmetrical design with triangular core</li> <li>Built-in optical fiber for surface detection system</li> <li>Built-in shielding against static charges</li> <li>PEEK enclosure material (resistant to organic solvents, e.g., glycol)</li> </ul>
<b>Calibration</b>	<ul style="list-style-type: none"> <li>Calibration certificate in Appendix C</li> </ul>
<b>Frequency</b>	<ul style="list-style-type: none"> <li>10MHz to 3GHz (dosimetry); Linearity: <math>\pm 0.2\text{dB}</math> (30MHz to 3GHz)</li> </ul>
<b>Optical Surface</b>	<ul style="list-style-type: none"> <li><math>\pm 0.2\text{mm}</math> repeatability in air and clear liquid over diffuse reflecting</li> </ul>
<b>Detection</b>	<ul style="list-style-type: none"> <li>Surface</li> </ul>
<b>Directivity</b>	<ul style="list-style-type: none"> <li><math>\pm 0.2\text{dB}</math> in HSL (rotation around probe axis)</li> <li><math>\pm 0.4\text{dB}</math> in HSL (rotation normal to probe axis)</li> </ul>
<b>Dynamic Range</b>	<ul style="list-style-type: none"> <li>5 <math>\mu\text{W/g}</math> to &gt; 100 <math>\text{mW/g}</math>; Linearity: <math>\pm 0.2\text{dB}</math></li> </ul>
<b>Dimensions</b>	<ul style="list-style-type: none"> <li>Overall length: 330mm</li> <li>Tip length: 16mm</li> <li>Body diameter: 12mm</li> <li>Tip diameter: 6.8mm</li> <li>Distance from probe tip to dipole centers: 2.7mm</li> </ul>
<b>Application</b>	<ul style="list-style-type: none"> <li>General dosimetry up to 3GHz</li> <li>Compliance tests of mobile phones</li> <li>Fast automatic scanning in arbitrary phantoms.</li> </ul>

**7 SYSTEM VALIDATION**

The probes are calibrated annually by the manufacturer. Dielectric parameters of the stimulating liquids are measured with an automated Hewlett Packard 85070B dielectric probe in conjunction with an Agilent 8753C-network analyser.

The SAR measurements of the device were done within 24 hours of system accuracy verification, which was done using the dipole validation kit. Power level of 20dBm was supplied to a dipole antenna placed under the flat section of SAM phantom. The validation results are in the table below and printouts of the validation test are attached in Appendix A. All the measured parameters were within the specification.

Note since the validation reference in muscle liquid is not available, the system validation with head tissues was done for the device testing in muscle. Based on OET 65 Supplement C EAB Part 22/24 SAR review Reminder Sheet 01/2002, this is a valid test.

Tissue	Freq. (MHz)	Description	Validation SAR (mW/g), 1g	Dielectric Parameters		Temp. (°C)	Test date	Comments Validation testing -
				$\epsilon_r$	$\sigma$ (S/m)			
Head	835	Measured	1.02	42.7	0.92	22±1	05-21-04	For device testing in head liquid
		Measured	0.96	42.1	0.92	22±1	05-24-04	For device testing in head liquid
		Measured	0.98	41.8	0.93	22±1	05-25-04	For device testing in head liquid
		Measured	0.98	41.0	0.89	22±1	05-27-04	For device testing in head liquid
		Measured	0.97	41.0	0.89	22±1	05-28-04	For device testing in head liquid
		Measured	1.00	40.6	0.90	22±1	06-01-04	For device testing in head liquid
		Measured	0.97	39.9	0.88	22±1	06-02-04	For device testing in head liquid
		Measured	0.98	39.5	0.88	22±1	06-03-04	For device testing in head liquid
		Measured	1.01	40.6	0.89	22±1	06-04-04	For device testing in head liquid
		Measured	1.03	40.8	0.90	22±1	06-07-04	For device testing in head liquid
		Measured	0.99	41.6	0.92	22±1	06-22-04	For device testing in head liquid
		Measured	0.99	40.6	0.90	22±1	06-23-04	For device testing in head liquid
		Measured	0.96	41.2	0.91	22±1	06-08-04	For device testing in muscle
		Measured	0.99	40.8	0.89	22±1	06-09-04	For device testing in muscle
		Measured	0.99	41.8	0.91	22±1	06-10-04	For device testing in muscle
		Measured	0.98	41.0	0.88	22±1	06-11-04	For device testing in muscle
		Measured	1.00	41.3	0.91	22±1	06-14-04	For device testing in muscle
		Measured	1.05	40.0	0.93	22±1	06-15-04	For device testing in muscle
		Measured	0.99	41.0	.90	22±1	06-16-04	For device testing in muscle
				SPEAG Reference	1.04	41.9	0.89	---
		FCC Reference*	---	41.5	0.90	20-26	---	
1900		Measured	4.45	39.8	1.42	22±1	05-24-04	For device testing in head liquid
		Measured	4.35	39.2	1.43	22±1	05-25-04	For device testing in head liquid
		Measured	4.34	39.6	1.42	22±1	05-27-04	For device testing in head liquid
		Measured	4.35	39.9	1.41	22±1	06-01-04	For device testing in head liquid
		Measured	4.24	39.5	1.40	22±1	06-04-04	For device testing in head liquid
		Measured	4.23	39.6	1.40	22±1	06-08-04	For device testing in muscle
		Measured	4.33	39.7	1.42	22±1	06-09-04	For device testing in muscle
		Measured	4.37	41.1	1.44	22±1	06-10-04	For device testing in muscle
		Measured	4.51	41.0	1.43	22±1	06-22-04	For device testing in muscle
				SPEAG Reference	4.56	39.1	1.47	---
		FCC Reference*	---	40.0	1.40	20-26	---	

Tissue	Freq. (MHz)	Description	Validation SAR (mW/g), 1g	Dielectric Parameters		Temp. (°C)	Test date	Comments Validation testing -
				$\epsilon_r$	$\sigma$ (S/m)			
Muscle	835	Measured	---	54.7	0.98	22±1	06/08/04	for device testing in muscle
		Measured	---	54.5	0.98	22±1	06/09/04	for device testing in muscle
		Measured	---	54.0	0.98	22±1	06/10/04	for device testing in muscle
		Measured	---	53.9	0.97	22±1	06/11/04	for device testing in muscle
		Measured	---	55.4	0.98	22±1	06/14/04	for device testing in muscle
		Measured	---	54.8	0.97	22±1	06/15/04	for device testing in muscle
		Measured	---	55.4	0.98	22±1	06/16/04	for device testing in muscle
		Measured	---	56.2	0.98	22±1	06/16/04	for device testing in muscle
		FCC Reference*	---	55.2	0.97	---	---	
	1900	Measured	---	54.2	1.50	22±1	06-08-04	for device testing in muscle
		Measured	---	53.9	1.60	22±1	06-09-04	for device testing in muscle
		Measured	---	53.6	1.60	22±1	06-10-04	for device testing in muscle
		Measured	---	53.8	1.60	22±1	06-22-04	for device testing in muscle
		FCC Reference*	---	53.3	1.52	20-26	---	

FCC reference values are adopted from OET Bulletin 65 (97-01) Supplement C (01-01).

**8 DESCRIPTION OF THE TEST PROCEDURE**

Measurements were made on both left-hand side and right hand side of the phantom.

The device was position against phantom according to OET Bulletin 65 (97-01) Supplement C (01-01). Definitions of terms used in aligning the device to a head phantom are available in IEEE Draft Standard P1528-2001 “Recommended Practice for Determining the Spatial-Peak Specific Absorption Rate (SAR) in the Human Body Due to Wireless Communications Devices: Experimental Techniques”

**8.1 Test Positions**

The device was placed in the holder. The bottom of the device aligns with the bottom of the holder clamp to provide a standard positioning and ensure enough free space for antenna.

Device holder was provided by SPEAG together with DASy4.

**8.1.1 Initial Ear Position**

The device was initially positioned with the earpiece region pressed against the ear spacer of a head phantom parallel to the “Neck-Front” (N-F) line defined along the base of the ear spacer that contains the “Ear Reference Point” (ERP). The “test device reference point” (point A) is aligned to the ERP on the head phantom and the “vertical centerline” is aligned to the “phantom reference plane”.

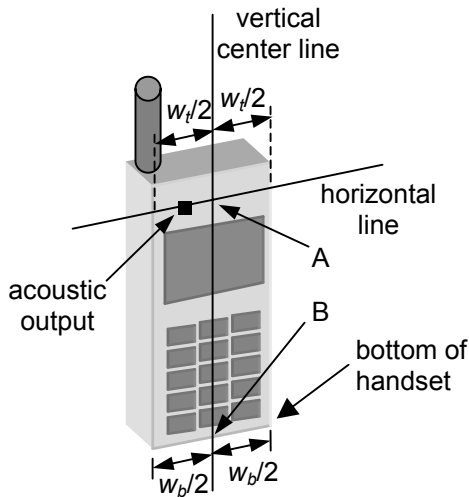


Figure 8-1 – Handset vertical and horizontal reference lines.

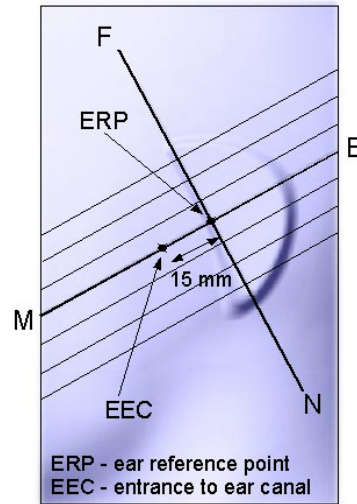


Figure 8-2 - Close up side view of phantom showing the ear region.

### 8.1.2 Cheek Position

“Initial ear position” alignments are maintained and the device is brought toward the mouth of the head phantom by pivoting along the “Neck-Front” line until any point on the display, keypad or mouthpiece portions of the handset is in contact with the phantom or when any portion of a foldout, sliding or similar keypad cover opened to its intended self-adjusting normal use position is in contact with the cheek or mouth of the phantom.

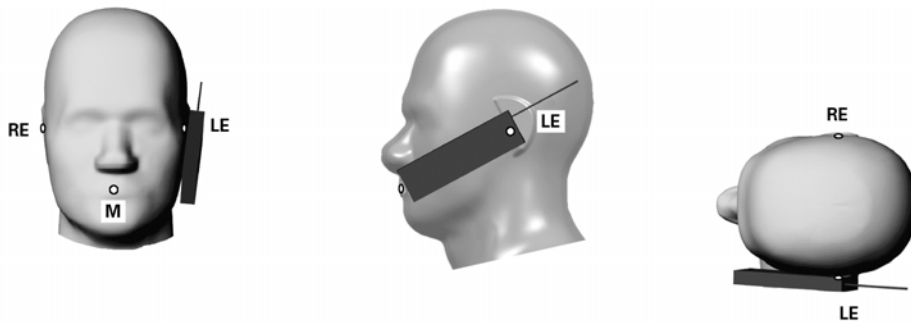


Figure 8.3 - Phone position 1, “cheek” or “touch” position.

### 8.1.3 Tilt Position

In the “cheek position”, if the earpiece of the device is not in full contact with the phantom’s ear spacer and the peak SAR location for the “cheek position” is located at the ear spacer region or corresponds to the earpiece region of the handset, the device is returned to the “initial ear position” by rotating it away from the mouth until the earpiece is in full contact with the ear spacer. Otherwise, the device is moved away from the cheek perpendicular to the line passes through both “ear reference points” for approximate 2-3cm. While it is in this position, the device is tilted away from the mouth with respect to the “test device reference point” by 15°. After the tilt, it is then moved back toward the head perpendicular to the line passes through both “ear reference point” until the device touches the phantom or the ear spacer. If the antenna touches the head first, the positioning process is repeated with a tilt angle less than 15° so that the device and its antenna would touch the phantom simultaneously.

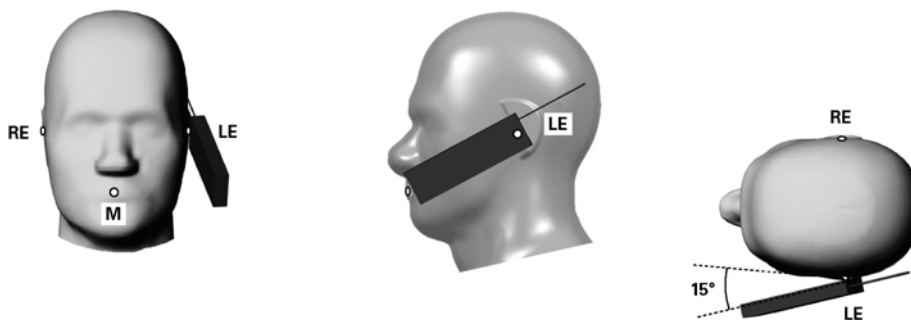


Figure 8-4 - Phone position 2, “tilted” position.

### 8.1.3 Body Worn Configuration

KWC body worn accessories were tested for the FCC RF exposure compliance. The phone was positioned into the carrying case and placed below the flat phantom. Hands-free headset was connected during measurements.

The SAR levels were also measured with 22.5mm air space for the hands-free application, which allow user to use other body-worn holster that contains no metal and provides at least 22.5mm separation from the closest point of the handset to the body.

## 8.2 Scan Procedures

First coarse scans are used for quick determination of the field distribution. Next a cube scans, 7x7x7 points; spacing between each point 5x5x5mm, is performed around the highest E-field value to determine the averaged SAR-distribution over 1g.

## 8.3 SAR Averaging Methods

The maximum SAR value is average over its volume using interpolation and extrapolation.

The interpolation of the points is done with a 3d-Spline. The 3d-Spline is composed of three one-dimensional splines with the "Not a knot" –condition [W. Gander, Computermathematik, p. 141-150] (x, y and z – directions) [numerical Recipes in C, Second Edition, p 123].

The extrapolation is based on least square algorithm [W. Gander, Computermathematik, p. 168-180]. Through the points in the first 30mm in all z-axis, polynomials of order four are calculated. This polynomial is then used to evaluate the points between the surface and the probe tip. The points, calculated from the surface, have a distance of 1mm from one another.

**9 MEASUREMENT UNCERTAINTY**

Description of individual measurement uncertainty

Uncertainty Description	Uncert. Value (± %)	Probability distribution	Divisor	$C_i^{-1}$ 1g	Stand. Uncert (1g) (±%)	$V_i^2$ or $V_{eff}$
<b>Measurement system</b>						
Probe calibration	4.4	N	1	1	4.4	∞
Axial isotropy of the probe	4.7	R	$\sqrt{3}$	$(1-C_D)^{1/2}$	1.9	∞
Sph. Isotropy of the probe	9.6	R	$\sqrt{3}$	$(C_D)^{1/2}$	3.9	∞
Spatial resolution	0.0	R	$\sqrt{3}$	1	0.0	∞
Boundary effects	5.5	R	$\sqrt{3}$	1	3.2	∞
Probe linearity	4.7	R	$\sqrt{3}$	1	2.7	∞
Detection limit	1.0	R	$\sqrt{3}$	1	0.6	∞
Readout electronics	1.0	N	1	1	1.0	∞
Response time	0.8	R	$\sqrt{3}$	1	0.5	∞
Integration time	1.4	R	$\sqrt{3}$	1	0.8	∞
RF ambient conditions	3.0	R	$\sqrt{3}$	1	1.7	∞
Mech. Constrains of robot	0.4	R	$\sqrt{3}$	1	0.2	∞
Probe positioning	2.9	R	$\sqrt{3}$	1	1.7	∞
Extrap. and integration	3.9	R	$\sqrt{3}$	1	2.3	∞
<b>Test Sample Related</b>						
Device positioning	3.0	N	$\sqrt{3}$	1	1.7	∞
Power drift	5.0	N	$\sqrt{3}$	1	2.9	∞
<b>Phantom and setup</b>						
Phantom uncertainty	4.0	R	1	1	2.3	∞
Liquid conductivity (target)	5.0	R	$\sqrt{3}$	0.6	1.7	∞
Liquid conductivity (meas.)	10.0	R	$\sqrt{3}$	0.6	3.5	∞
Liquid permittivity (target)	5.0	R	$\sqrt{3}$	0.6	1.7	∞
Liquid permittivity (meas.)	5.0	R	$\sqrt{3}$	0.6	1.7	∞
<b>Combined Standard Uncertainty:</b>					<b>10.32</b>	
<b>Extended Standard Uncertainty (k=2):</b>					<b>20.6</b>	

N: Normal

R: Rectangular



**10 TEST DATA**
**10.1 Head SAR Test Results**

The following tables list the SAR results in each configuration and operating mode. The channels tested for each configuration have similar SAR distributions. Highest SAR (bold blue color) plots for each configuration is provided in Appendix B.

Model K484L (worse case)						
<b>AMPS 800 HEAD</b>		Channel:		991	383	799
		Frequency (MHz):		824.04	836.49	848.97
		Power before Test (dBm):		25.06	25.08	25.07
		Power after Test (dBm):		25.01	25.02	25.06
Configuration	Test Position	Antenna Position	SAR, 1g (W/kg)			
<b>Left Head</b>	Cheek/Touch	Fixed	1.09	<b>1.32/1.21*</b>	1.14	
	Ear/Tilt	Fixed	0.91	<b>1.12</b>	0.95	
<b>Right Head</b>	Cheek/Touch	Fixed	0.93	<b>1.14</b>	1.01	
	Ear/Tilt	Fixed	0.77	<b>1.03</b>	0.82	

Note: \*tested with "sport clip" battery cover

Model K434LC (worse case)						
<b>CDMA 800 HEAD</b>		Channel:		1013	383	777
		Frequency (MHz):		824.70	836.49	848.31
		Power before Test (dBm):		25.08	25.10	25.09
		Power after Test (dBm):		25.04	25.00	25.02
Configuration	Test Position	Antenna Position	SAR, 1g (W/kg)			
<b>Left Head</b>	Cheek/Touch	Fixed	1.18	<b>1.37/1.26*</b>	1.21	
	Ear/Tilt	Fixed	1.04	<b>1.15</b>	0.97	
<b>Right Head</b>	Cheek/Touch	Fixed	1.01	<b>1.14</b>	1.07	
	Ear/Tilt	Fixed	0.88	<b>1.02</b>	0.92	

Note: \*tested with "sport clip" battery cover

Model K434LC (worse case)					
<b>CDMA 1900 HEAD</b>		<b>Channel:</b>	25	600	1175
		<b>Frequency (MHz):</b>	1851.25	1880	1908.75
		<b>Power before Test (dBm):</b>	23.02	23.00	23.08
		<b>Power after Test (dBm):</b>	22.83	23.04	23.00
<b>Configuration</b>	<b>Test Position</b>	<b>Antenna Position</b>	<b>SAR, 1g (W/kg)</b>		
<b>Left Head</b>	Cheek/Touch	Fixed	1.03	1.21	<b>1.36/1.20*</b>
	Ear/Tilt	Fixed	0.82	0.96	<b>1.04</b>
<b>Right Head</b>	Cheek/Touch	Fixed	0.93	<b>1.06</b>	0.97
	Ear/Tilt	Fixed	0.83	0.88	<b>0.97</b>

Note: \*tested with "sport clip" battery cover

**10.2 Body Worn SAR Test Result**

For each mode, corresponding SAR distribution printouts of maximum results per set-up (in blue below). For example, the device was tested with a 22.5mm air gap or with a KWC holster, are shown in Appendix B. The rest of SAR distributions is substantially similar or equivalent to the plots submitted regardless of used channel.

Model K434L (worse case)						
<b>AMPS 800 BODY</b>		<b>Channel:</b>		991	383	799
		<b>Frequency (MHz):</b>		824.04	836.49	848.97
		<b>Power before Test (dBm):</b>		25.05	25.13	25.08
		<b>Power after Test (dBm):</b>		25.03	25.08	25.04
<b>Configuration</b>	<b>Test Position</b>	<b>Antenna Position</b>	<b>SAR, 1g (W/kg)</b>			
<b>Flat</b>	Air Gap – 22.5mm	Fixed	---	<b>0.42/0.47*</b>	---	
	Phone Case (TXLCC10042B)	Fixed	---	<b>0.61/0.51*</b>	---	
	Belt Clip (TXLCC10047B)	Fixed	---	<b>0.50/0.41*</b>	---	

Note 1: \*tested with "sport clip" battery cover

Note 2: -- SAR measured at the middle channel is at least 3dB lower than the SAR limit, testing at the low and high channels are optional for this test configuration.

Model K494LC (worse case)						
<b>CDMA 800 BODY</b>		Channel:		1013	383	777
		Frequency (MHz):		824.70	836.49	848.31
		Power before Test (dBm):		25.02	25.10	25.10
		Power after Test (dBm):		25.00	25.06	25.03
Configuration	Test Position	Antenna Position	SAR, 1g (W/kg)			
<b>Flat</b>	Air Gap – 22.5mm	Fixed	---	<b>0.55/0.44*</b>	---	
	Phone Case (TXLCC10042B)	Fixed	---	<b>0.62/0.66*</b>	---	
	Belt Clip (TXLCC10047B)	Fixed	---	<b>0.45/0.45*</b>	---	

Note 1: \*tested with "sport clip" battery cover

Note 2: -- SAR measured at the middle channel is at least 3dB lower than the SAR limit, testing at the low and high channels are optional for this test configuration.

Model K434LC (worse case)						
<b>CDMA 1900 BODY</b>		Channel:		25	600	1175
		Frequency (MHz):		1851.25	1880	1908.75
		Power before Test (dBm):		23.02	23.00	23.08
		Power after Test (dBm):		22.83	23.04	23.00
Configuration	Test Position	Antenna Position	SAR, 1g (W/kg)			
<b>Flat</b>	Air Gap – 22.5mm	Fixed	---	<b>0.46/0.32*</b>	---	
	Phone Case (TXLCC10042B)	Fixed	---	<b>0.47/0.47*</b>	---	
	Belt Clip (TXLCC10047B)	Fixed	---	<b>0.38/0.37*</b>	---	

Note 1: \*tested with "sport clip" battery cover

Note 2: -- SAR measured at the middle channel is at least 3dB lower than the SAR limit, testing at the low and high channels are optional for this test configuration.

11 TEST SETUP PHOTOS

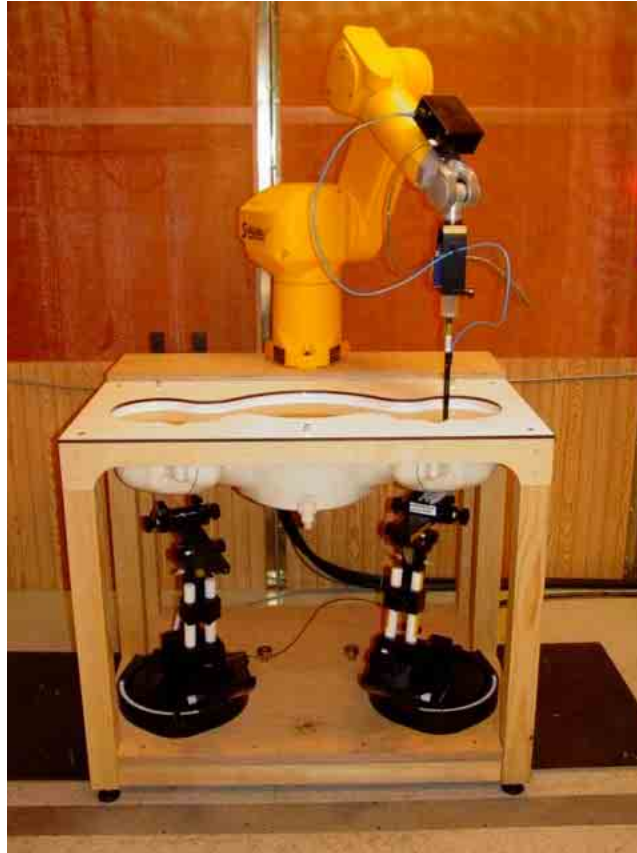


Figure 11.1 DASY 4 System



Figure 11.2 phone against the head (left cheek position)



Figure 11.3 phone against the head (left tilt position)



Figure 11.4 body SAR set-up (with belt clip)

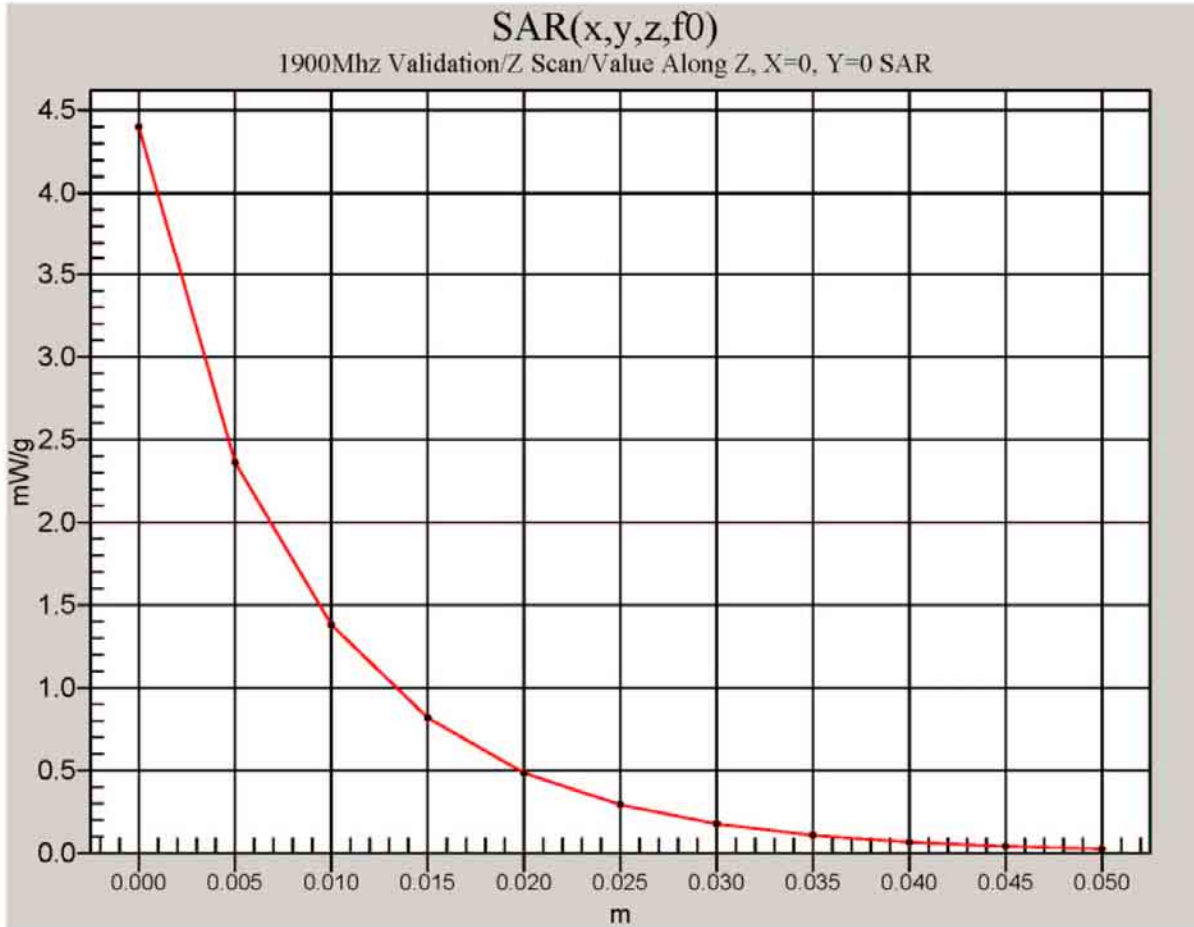


Figure 11.5 body SAR set-up (with leather case)



Figure 11.6 body SAR set-up (with 22.5mm air separation)

### Appendix A: Validation test printout





Date/Time: 05/24/04 10:24:02

Test Laboratory: Kyocera

### 1900MHz Validation using Dipole #5d005

Communication System: CW 1900, Frequency: 1900 MHz, Duty Cycle: 1:1

Medium: Head 1900 MHz, Medium parameters used (interpolated):  $f = 1900$  MHz,  $\sigma = 1.42$  mho/m,  $\epsilon_r = 39.8$ ,  $\rho = 1000$  kg/m<sup>3</sup>

Phantom: SAM 12, Phantom section: Flat Section

**DASY4 Configuration:**

Probe: ET3DV6 - SN1712, ConvF(5.4, 5.4, 5.4), Calibrated: Probe not calibrated

Sensor: Surface 4mm (Mechanical And Optical Surface Detection),

Electronics: DAE3 Sn530, Calibrated: 12/22/2003

Measurement SW: DASY4, V4.2 Build 44

Postprocessing SW: SEMCAD, V1.8 Build 112

**Temperature**

Room T = 21.8 +/- 1 deg C, Liquid T = 22.0 +/- 1 deg C

**1900Mhz/Zoom Scan (7x7x7)/Cube 0:** Measurement grid: dx=5mm, dy=5mm, dz=5mm

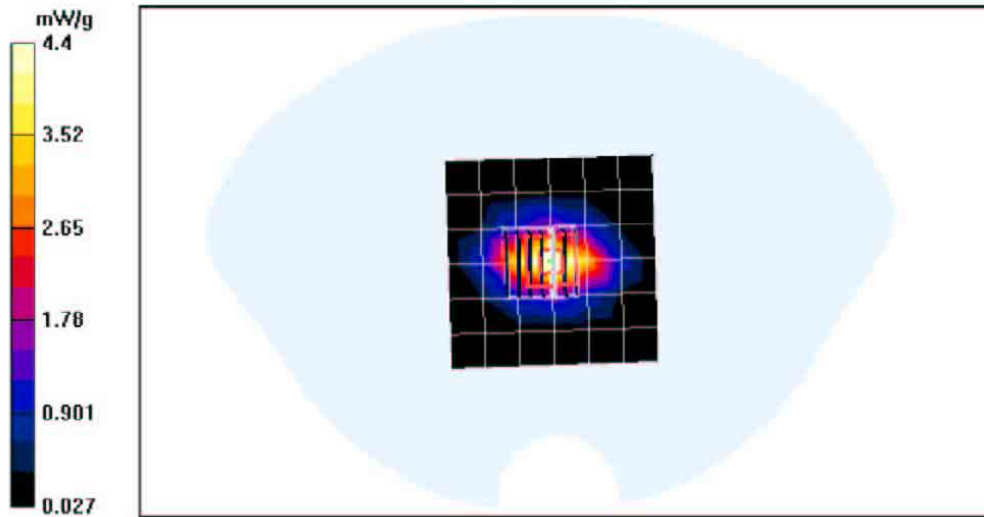
Reference Value = 62.7 V/m, Power DnB = -0.003 dB

Maximum value of SAR (measured) = 5.02 mW/g

Peak SAR (extrapolated) = 7.94 W/kg

SAR(1g) = 4.45 mW/g; SAR(10g) = 2.34 mW/g

Info: Interpolated medium parameters used for SAR evaluation!



file://C:\Dropbox\K433L\PCS%20Only%20Phone\FCC-1900MHz%20Validation,%20Pro... 6/26/2004

Date/Time: 05/25/04 00:23:02

Test Laboratory: Kyocera

### 1900MHz Validation using Dipole #5d005

Communication System: CW 1900, Frequency: 1900 MHz, Duty Cycle: 1:1

Medium: Head 1900 MHz, Medium parameters used (interpolated):  $f = 1900$  MHz,  $\sigma = 1.43$  mho/m;  $\epsilon_r = 39.2$ ;  $\rho = 1000$  kg/m<sup>3</sup>

Phantom: SAM 12, Phantom section: Flat Section

**DASY4 Configuration:**

Probe: ET3DV6 - SN1712, ConvF(5.4, 5.4, 5.4), Calibrated: Probe not calibrated

Sensor: Surface 4mm (Mechanical And Optical Surface Detection),

Electronics: DAE3 Sn530, Calibrated: 12/22/2003

Measurement SW: DASY4, V4.2 Build 44

Postprocessing SW: SEMCAD, V1.8 Build 112

**Temperature**

Room T = 21.8 +/- 1 deg C, Liquid T = 22.0 +/- 1 deg C

**1900Mhz/Zoom Scan (7x7x7)/Cube 0:** Measurement grid: dx=5mm, dy=5mm, dz=5mm

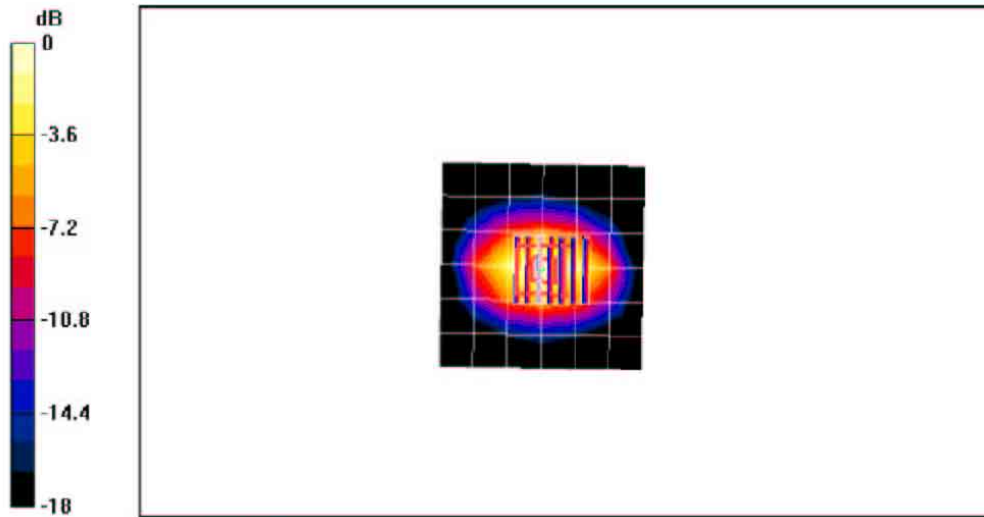
Reference Value = 61.1 V/m, Power DnB = 0.0 dB

Maximum value of SAR (measured) = 4.92 mW/g

Peak SAR (extrapolated) = 7.72 W/kg

SAR(1g) = 4.35 mW/g; SAR(10g) = 2.3 mW/g

Info: Interpolated medium parameters used for SAR evaluation!



0 dB = 4.92mW/g

file://C:\Dropbox\K433L\PCS%20Only%20Phone\FCC-1900MHz%20Validation,%20Pro... 6/26/2004

Date/Time: 05/27/04 00:34:10

Test Laboratory: Kyocera

### 1900MHz Validation using Dipole #5d005

Communication System: CW 1900, Frequency: 1900 MHz, Duty Cycle: 1:1

Medium: Head 1900 MHz, Medium parameters used (interpolated):  $f = 1900$  MHz,  $\sigma = 1.42$  mho/m;  $\epsilon_r = 39.6$ ,  $\rho = 1000$  kg/m<sup>3</sup>

Phantom: SAM 12, Phantom section: Flat Section

**DASY4 Configuration:**

Probe: ET3DV6 - SN1712, ConvF(5.4, 5.4, 5.4), Calibrated: Probe not calibrated

Sensor: Surface 4mm (Mechanical And Optical Surface Detection),

Electronics: DAE3 Sn530, Calibrated: 12/22/2003

Measurement SW: DASY4, V4.2 Build 44

Postprocessing SW: SEMCAD, V1.8 Build 112

**Temperature**

Room T = 21.8 +/- 1 deg C, Liquid T = 22.0 +/- 1 deg C

**1900Mhz/Zoom Scan (7x7x7)/Cube 0:** Measurement grid: dx=5mm, dy=5mm, dz=5mm

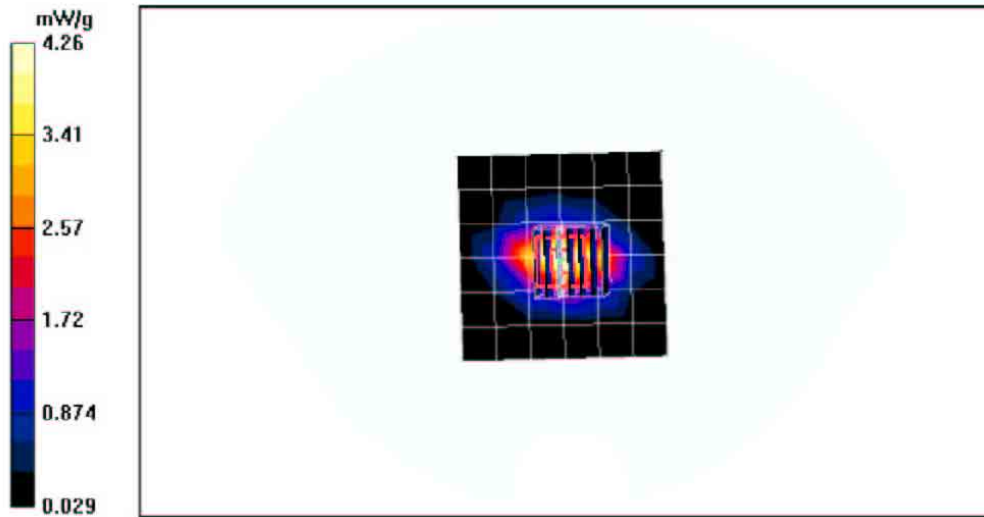
Reference Value = 61.3 V/m, Power DnB = 0.0 dB

Maximum value of SAR (measured) = 4.92 mW/g

Peak SAR (extrapolated) = 7.74 W/kg

SAR(1g) = 4.34 mW/g; SAR(10g) = 2.29 mW/g

Info: Interpolated medium parameters used for SAR evaluation!



file://C:\Dropbox\K433L\PCS%20Only%20Phone\FCC-1900MHz%20Validation,%20Pro... 6/26/2004

Date/Time: 06/01/04 00:30:18

Test Laboratory: Kyocera

### 1900MHz Validation using Dipole #5d005

Communication System: CW 1900, Frequency: 1900 MHz, Duty Cycle: 1:1

Medium: Head 1900 MHz, Medium parameters used (interpolated):  $f = 1900$  MHz,  $\sigma = 1.41$  mho/m;  $\epsilon_r = 39.9$ ,  $\rho = 1000$  kg/m<sup>3</sup>

Phantom: SAM 12, Phantom section: Flat Section

**DASY4 Configuration:**

Probe: ET3DV6 - SN1712, ConvF(5.4, 5.4, 5.4), Calibrated. Probe not calibrated

Sensor: Surface 4mm (Mechanical And Optical Surface Detection),

Electronics: DAE3 Sn530, Calibrated: 12/22/2003

Measurement SW: DASY4, V4.2 Build 44

Postprocessing SW: SEMCAD, V1.8 Build 112

**Temperature**

Room T = 21.8 +/- 1 deg C, Liquid T = 22.0 +/- 1 deg C

**1900Mhz/Zoom Scan (7x7x7)/Cube 0:** Measurement grid: dx=5mm, dy=5mm, dz=5mm

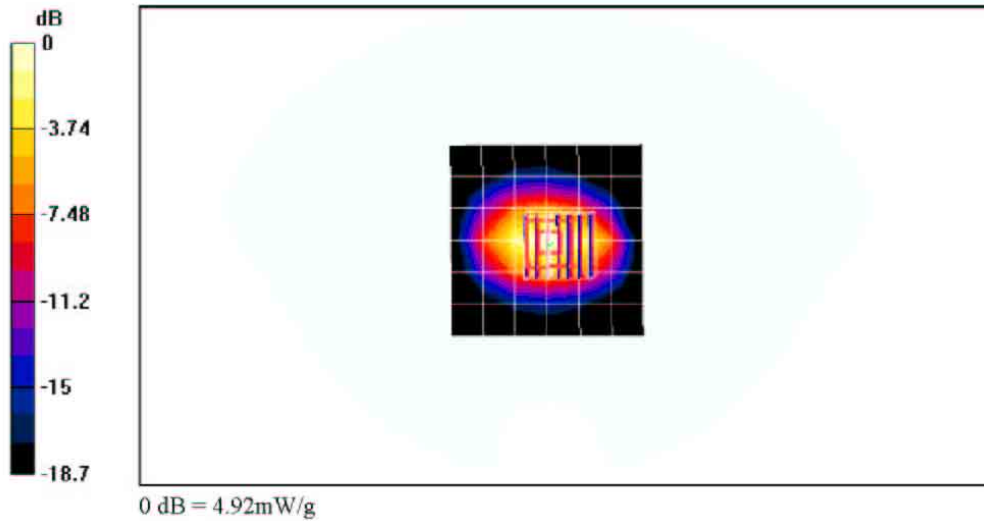
Reference Value = 61.7 V/m, Power DnB = -0.001 dB

Maximum value of SAR (measured) = 4.92 mW/g

Peak SAR (extrapolated) = 7.77 W/kg

SAR(1g) = 4.35 mW/g; SAR(10g) = 2.28 mW/g

Info: Interpolated medium parameters used for SAR evaluation!



file://\Kwc045925-v111\Dasy4%20Reports\K7\K434LC%20#9LWQ\AMPS Head &amp; Mus... 6/26/2004

Date/Time: 06/04/04 00:25:11

Test Laboratory: Kyocera

### 1900MHz Validation using Dipole #5d005

Communication System: CW 1900, Frequency: 1900 MHz, Duty Cycle: 1:1

Medium: Head 1900 MHz, Medium parameters used (interpolated):  $f = 1900$  MHz,  $\sigma = 1.4$  mho/m;  $\epsilon_r = 39.5$ ;  $\rho = 1000$  kg/m<sup>3</sup>

Phantom: SAM 12, Phantom section: Flat Section

#### DASY4 Configuration:

Probe: ET3DV6 - SN1712, ConvF(5.4, 5.4, 5.4), Calibrated: Probe not calibrated

Sensor-Surface: 4mm (Mechanical And Optical Surface Detection)

Sensor-Surface: 0mm (Fix Surface)

Electronics: DAE3 Sn30, Calibrated: 12/22/2003

Measurement SW: DASY4, V4.2 Build 44

Postprocessing SW: SEMCAD, V1.3 Build 112

#### Temperature

Room T = 21.8 +/- 1 deg C, Liquid T = 22.0 +/- 1 deg C

### 1900Mhz/Zoom Scan (7x7x7)/Cube 0: Measurement grid: dx=5mm, dy=5mm, dz=5mm

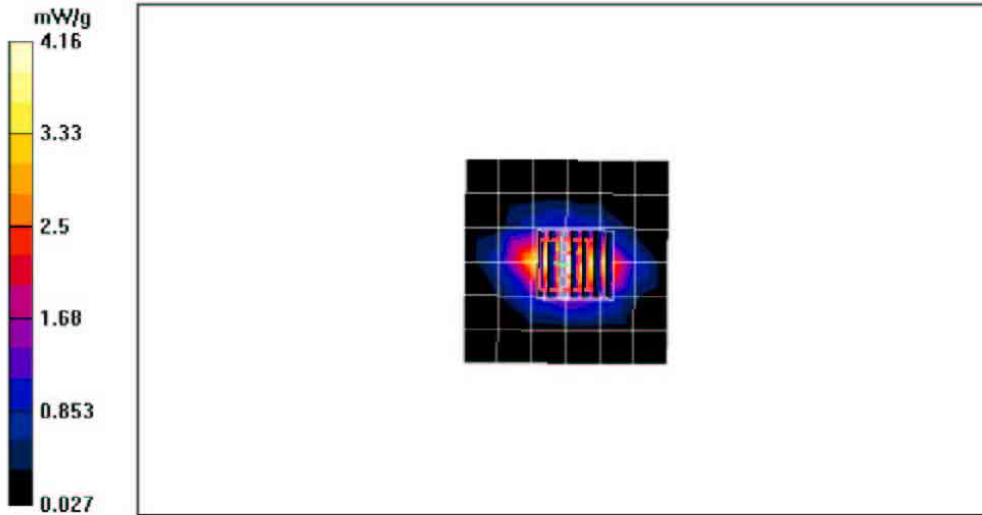
Reference Value = 61.5 V/m, Power Drift = 0.009 dB

Maximum value of SAR (measured) = 4.79 mW/g

Peak SAR (extrapolated) = 7.54 W/kg

SAR(1 g) = 4.24 mW/g; SAR(10 g) = 2.24 mW/g

Info: Interpolated medium parameters used for SAR evaluation!



file://C:\Dropbox\K433L\PCS%20Only%20Phone\FCC-1900MHz%20Validation,%20Pro... 6/26/2004

Date/Time: 06/03/04 00:26:06

Test Laboratory: Kyocera

### 1900MHz Validation using Dipole #5d005

Communication System: CW 1900, Frequency: 1900 MHz, Duty Cycle: 1:1

Medium: Head 1900 MHz, Medium parameters used (interpolated):  $f = 1900$  MHz,  $\sigma = 1.4$  mho/m,  $\epsilon_r = 39.6$ ,  $\rho = 1000$  kg/m<sup>3</sup>

Phantom: SAM 12, Phantom section: Flat Section

**DASY4 Configuration:**

Probe: ET3DV6 - SN1712, ConvF(5.4, 5.4, 5.4), Calibrated: Probe not calibrated

Sensor: Surface 4mm (Mechanical And Optical Surface Detection),

Electronics: DAE3 Sn530, Calibrated: 12/22/2003

Measurement SW: DASY4, V4.2 Build 44

Postprocessing SW: SEMCAD, V1.8 Build 112

**Temperature**

Room T = 21.8 +/- 1 deg C, Liquid T = 22.0 +/- 1 deg C

**1900Mhz/Zoom Scan (7x7x7)/Cube 0:** Measurement grid: dx=5mm, dy=5mm, dz=5mm

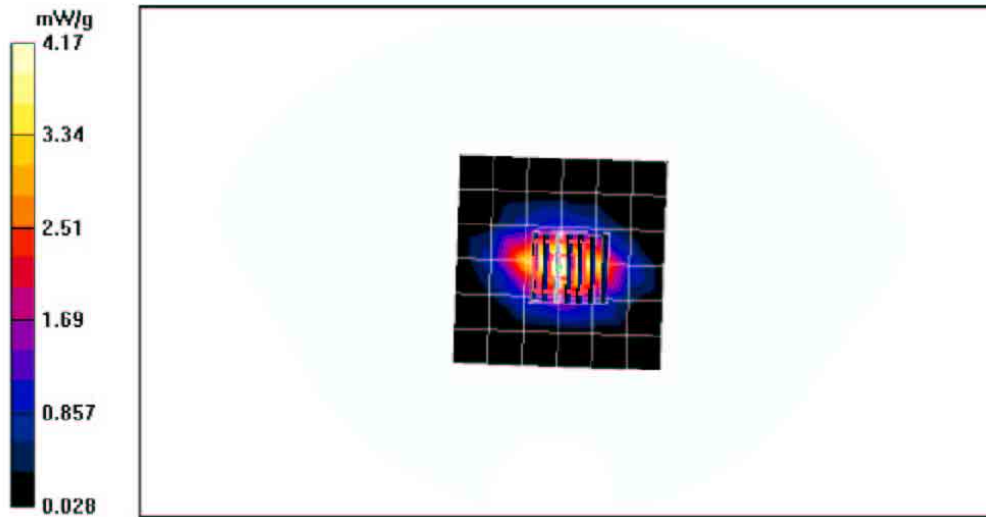
Reference Value = 61.2 V/m, Power DnB = -0.005 dB

Maximum value of SAR (measured) = 4.81 mW/g

Peak SAR (extrapolated) = 7.56 W/kg

SAR(1g) = 4.23 mW/g; SAR(10g) = 2.23 mW/g

Info: Interpolated medium parameters used for SAR evaluation!



file://C:\Dropbox\K433L\PCS%20Only%20Phone\FCC-1900MHz%20Validation,%20Pro... 6/26/2004

Date/Time: 06/09/04 00:36:32

Test Laboratory: Kyocera

### 1900MHz Validation using Dipole #5d005

Communication System: CW 1900, Frequency: 1900 MHz, Duty Cycle: 1:1

Medium: Head 1900 MHz, Medium parameters used (interpolated):  $f = 1900$  MHz,  $\sigma = 1.42$  mho/m;  $\epsilon_r = 39.7$ ,  $\rho = 1000$  kg/m<sup>3</sup>

Phantom: SAM 12, Phantom section: Flat Section

**DASY4 Configuration:**

Probe: ET3DV6 - SN1712, ConvF(5.4, 5.4, 5.4), Calibrated. Probe not calibrated

Sensor: Surface 4mm (Mechanical And Optical Surface Detection),

Electronics: DAE3 Sn530, Calibrated: 12/22/2003

Measurement SW: DASY4, V4.2 Build 44

Postprocessing SW: SEMCAD, V1.8 Build 112

**Temperature**

Room T = 21.8 +/- 1 deg C, Liquid T = 22.0 +/- 1 deg C

**1900Mhz/Zoom Scan (7x7x7)/Cube 0:** Measurement grid: dx=5mm, dy=5mm, dz=5mm

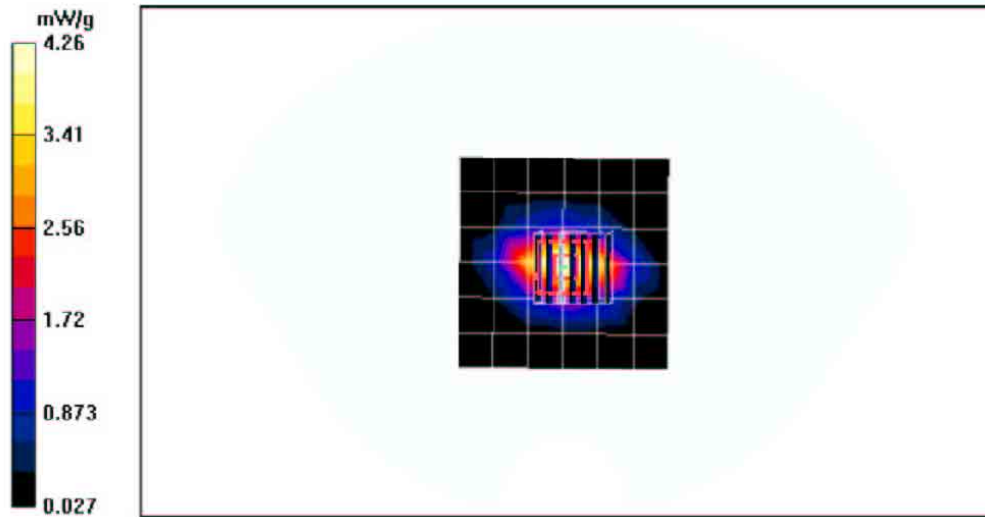
Reference Value = 61.8 V/m, Power DnB = -0.007 dB

Maximum value of SAR (measured) = 4.91 mW/g

Peak SAR (extrapolated) = 7.73 W/kg

SAR(1g) = 4.33 mW/g; SAR(10g) = 2.28 mW/g

Info: Interpolated medium parameters used for SAR evaluation!



file://C:\Dropbox\K433L\PCS%20Only%20Phone\FCC-1900MHz%20Validation,%20Pro... 6/26/2004

Date/Time: 06/10/04 00:36:42

Test Laboratory: Kyocera

### 1900MHz Validation using Dipole #5d005

Communication System: CW 1900, Frequency: 1900 MHz, Duty Cycle: 1:1

Medium: Head 1900 MHz, Medium parameters used (interpolated):  $f = 1900$  MHz,  $\sigma = 1.44$  mho/m;  $\epsilon_r = 41.1$ ;  $\rho = 1000$  kg/m<sup>3</sup>

Phantom: SAM 12, Phantom section: Flat Section

#### DASY4 Configuration:

Probe: ET3DV6 - SN1712, ConvF(5.4, 5.4, 5.4), Calibrated: Probe not calibrated

Sensor-Surface: 4mm (Mechanical And Optical Surface Detection)

Sensor-Surface: 0mm (Fix Surface)

Electronics: DAE3 Sn330, Calibrated: 12/22/2003

Measurement SW: DASY4, V4.2 Build 44

Postprocessing SW: SEMCAD, V1.3 Build 112

#### Temperature

Room T = 21.8 +/- 1 deg C, Liquid T = 22.0 +/- 1 deg C

### 1900Mhz/Zoom Scan (7x7x7)/Cube 0: Measurement grid: dx=5mm, dy=5mm, dz=5mm

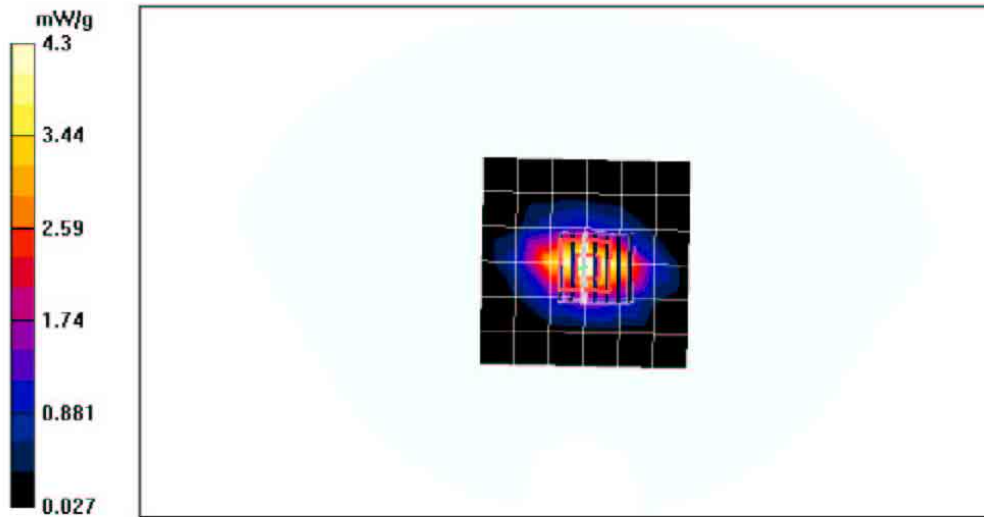
Reference Value = 61.7 V/m, Power Drift = -0.005 dB

Maximum value of SAR (measured) = 4.95 mW/g

Peak SAR (extrapolated) = 7.82 W/kg

SAR(1 g) = 4.37 mW/g; SAR(10 g) = 2.3 mW/g

Info: Interpolated medium parameters used for SAR evaluation!



file://C:\Dropbox\K433L\PCS%20Only%20Phone\FCC-1900MHz%20Validation,%20Pro... 6/26/2004



Date/Time: 06/22/04 01:01:17

Test Laboratory: Kyocera

### 1900MHz Validation using Dipole #5d005

Communication System: CW 1900, Frequency: 1900 MHz, Duty Cycle: 1:1

Medium: Head 1900 MHz, Medium parameters used (interpolated):  $f = 1900$  MHz,  $\sigma = 1.43$  mho/m;  $\epsilon_r = 41$ ;  $\rho = 1000$  kg/m<sup>3</sup>

Phantom: SAM 12, Phantom section: Flat Section

#### DASY4 Configuration:

Probe: ET3DV6 - SN1712, ConvF(5.4, 5.4, 5.4), Calibrated: Probe not calibrated

Sensor-Surface: 4mm (Mechanical And Optical Surface Detection)

Sensor-Surface: 0mm (Fix Surface)

Electronics: DAE3 Sn30, Calibrated: 12/22/2003

Measurement SW: DASY4, V4.2 Build 44

Postprocessing SW: SEMCAD, V1.3 Build 112

#### Temperature

Room T = 21.8 +/- 1 deg C, Liquid T = 22.0 +/- 1 deg C

### 1900Mhz/Zoom Scan (7x7x7)/Cube 0: Measurement grid: dx=5mm, dy=5mm, dz=5mm

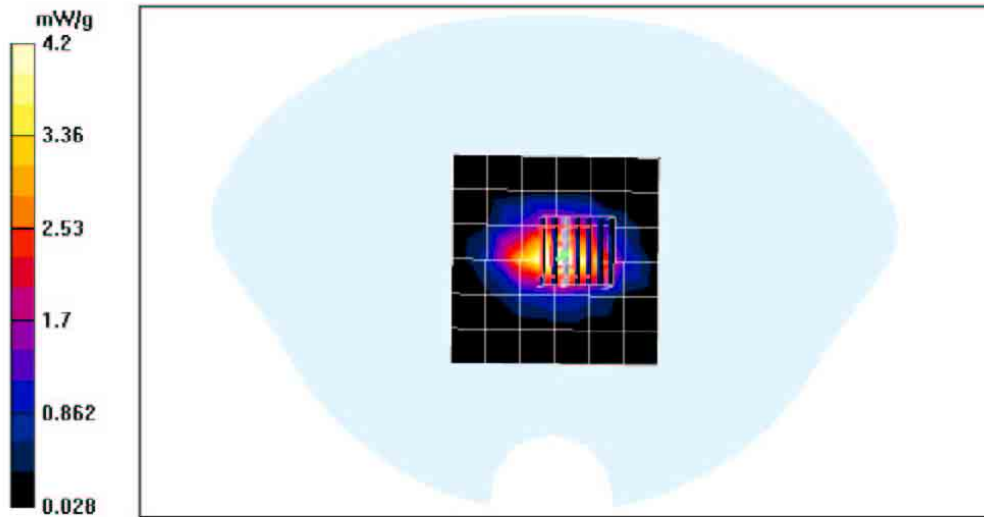
Reference Value = 61.4 W/m, Power DnB = 0.008 dB

Maximum value of SAR (measured) = 5.13 mW/g

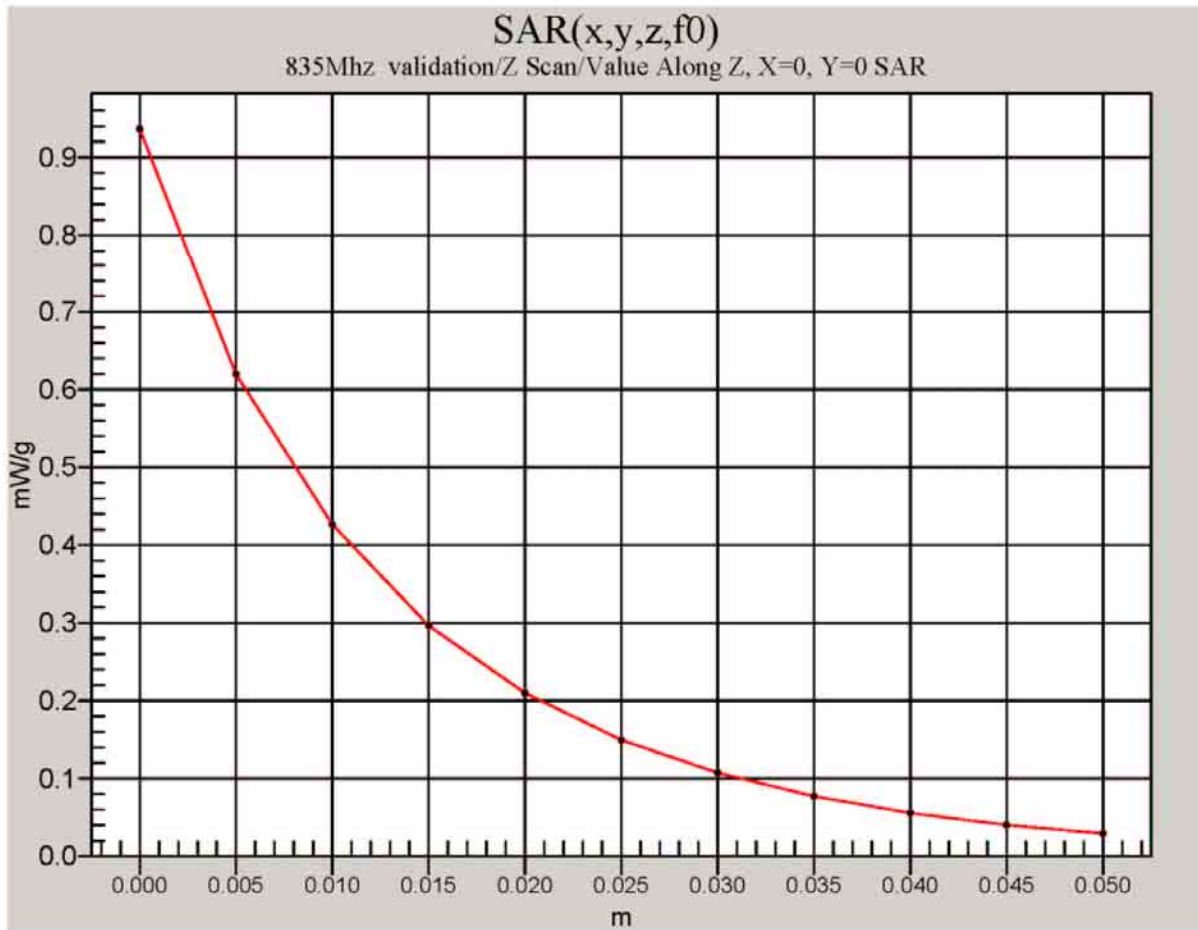
Peak SAR (extrapolated) = 8.13 W/kg

SAR(1g) = 4.51 mW/g; SAR(10g) = 2.37 mW/g

Info: Interpolated medium parameters used for SAR evaluation!



file://C:\Dropbox\K433L\PCS%20Only%20Phone\FCC-1900MHz%20Validation,%20Pro... 6/26/2004



Date/Time: 05/21/04 00:22:55

Test Laboratory: Kyocera

**835Mhz Validation at 20dB using Dipole 453**

Communication System: CW, Frequency: 835 MHz, Duty Cycle: 1:1

Medium: HSL900, Medium parameters used:  $f = 835$  MHz,  $\sigma = 0.922$  mho/m,  $\epsilon_r = 42.7$ ,  $\rho = 1000$  kg/m<sup>3</sup>

Phantom: SAM 12, Phantom section: Flat Section

**DASY4 Configuration:**

Probe: ET3DV6 - SN1663, ConvF(6.7, 6.7, 6.7), Calibrated: 10/10/2003

Sensor-Surface: 4mm (Mechanical And Optical Surface Detection)

Sensor-Surface: 0mm (Fix Surface)

Electronics: DAE3 Sn493, Calibrated: 11/25/2003

Measurement SW: DASY4, V4.2 Build 44

Postprocessing SW: SEMCAD, V1.3 Build 112

**Temperature**

Room T = 21.8 +/- 1 deg C, Liquid T = 22.0 +/- 1 deg C

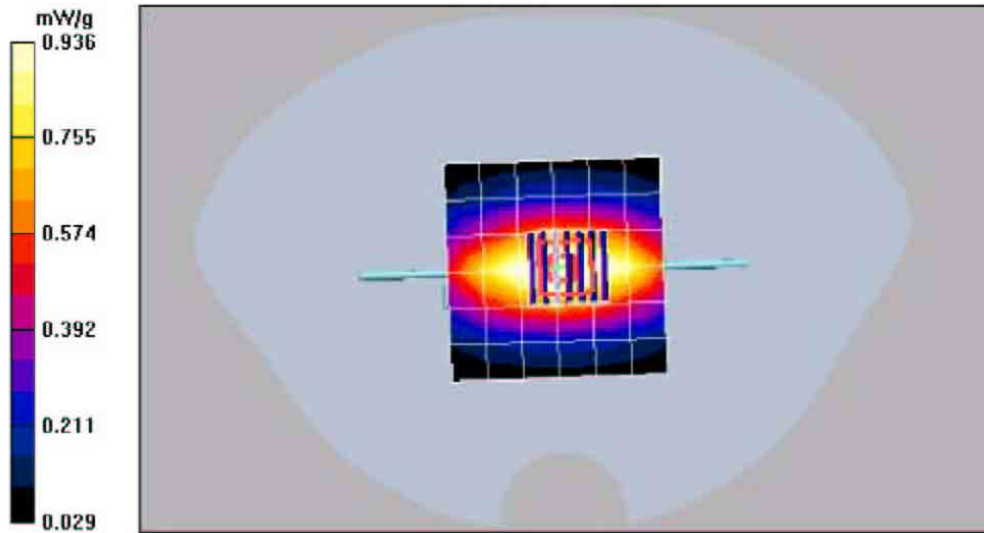
**20 dbm validation/Zoom Scan (7x7x7)/Cube 0:** Measurement grid: dx=5mm, dy=5mm, dz=5mm

Reference Value = 35.9 V/m, Power DnB = -0.0 dB

Maximum value of SAR (measured) = 1.1 mW/g

Peak SAR (extrapolated) = 1.5 W/kg

SAR(1 g) = 1.02 mW/g; SAR(10 g) = 0.663 mW/g



file://C:\Dasy4\Reports\Validations\Room%20%20AMPS-CDMA800\835Mhz%20V... 6/25/2004

Date/Time: 05/24/04 07:42:19

Test Laboratory: Kyocera

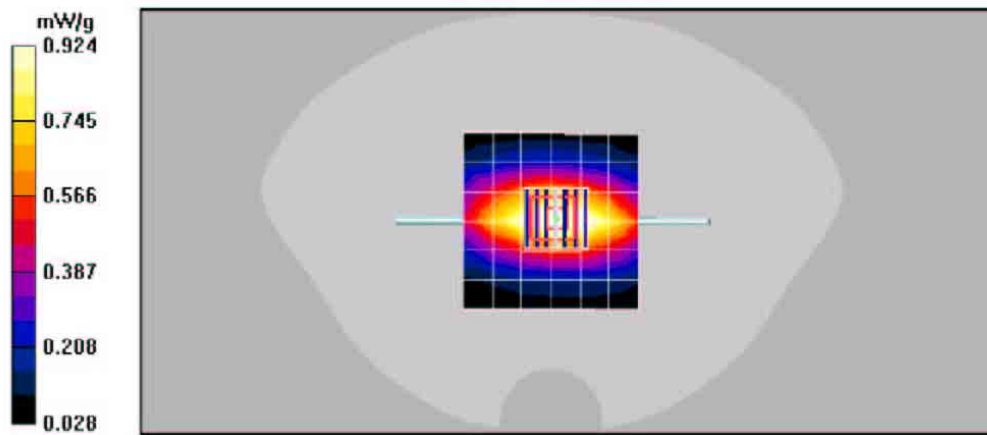
**835Mhz Validation at 20dB using Dipole 453**

Communication System: CW, Frequency: 835 MHz, Duty Cycle: 1:1  
 Medium: HSL900, Medium parameters used:  $f = 835 \text{ MHz}$ ,  $\sigma = 0.915 \text{ mho/m}$ ,  $\epsilon_r = 42.1$ ,  $\rho = 1000 \text{ kg/m}^3$   
 Phantom: SAM 12, Phantom section: Flat Section

**DASY4 Configuration:**  
 Probe: ET3DV6 - SN1663, ConvF(6.7, 6.7, 6.7), Calibrated: 10/10/2003  
 Sensor Surface: 4mm (Mechanical And Optical Surface Detection),  
 Electronics: DAE3 Sn493, Calibrated: 11/25/2003  
 Measurement SW: DASY4, V4.2 Build 44  
 Postprocessing SW: SEMCAD, V1.8 Build 112

**Temperature:**  
 Room T = 21.8 +/- 1 deg C, Liquid T = 22.0 +/- 1 deg C

**20 dbm validation/Zoom Scan (7x7x7)/Cube 0:** Measurement grid:  $dx=5\text{mm}$ ,  $dy=5\text{mm}$ ,  $dz=5\text{mm}$   
 Reference Value = 35.1 V/m, Power Drift = -0.0 dB  
 Maximum value of SAR (measured) = 1.04 mW/g  
 Peak SAR (extrapolated) = 1.41 W/kg  
**SAR(1g) = 0.962 mW/g; SAR(10g) = 0.626 mW/g**



file://C:\Dasy4\20Reports\K7\K493LC%20#B79L\PCS head and muscle\FCC-835Mhz ... 6/29/2004

Date/Time: 05/25/04 00:23:48

Test Laboratory: Kyocera

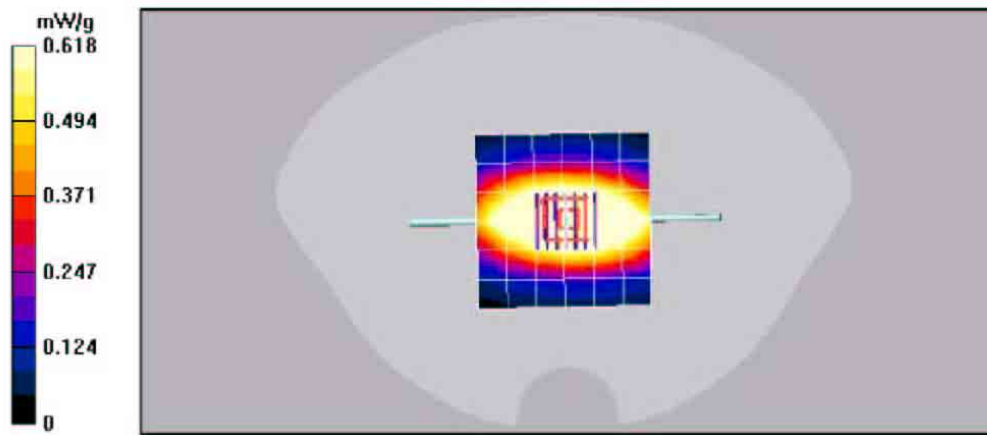
**835Mhz Validation at 20dB using Dipole 453**

Communication System: CW, Frequency: 835 MHz, Duty Cycle: 1:1  
 Medium: HSL900, Medium parameters used:  $f = 835 \text{ MHz}$ ,  $\sigma = 0.925 \text{ mho/m}$ ,  $\epsilon_r = 41.8$ ,  $\rho = 1000 \text{ kg/m}^3$   
 Phantom: SAM 12, Phantom section: Flat Section

**DASY4 Configuration:**  
 Probe: ET3DV6 - SN1663, ConvF(6.7, 6.7, 6.7), Calibrated: 10/10/2003  
 Sensor Surface: 4mm (Mechanical And Optical Surface Detection),  
 Electronics: DAE3 Sn493, Calibrated: 11/25/2003  
 Measurement SW: DASY4, V4.2 Build 44  
 Postprocessing SW: SEMCAD, V1.8 Build 112

**Temperature:**  
 Room T = 21.8 +/- 1 deg C, Liquid T = 22.0 +/- 1 deg C

**20 dbm validation/Zoom Scan (7x7x7)/Cube 0:** Measurement grid:  $dx=5\text{mm}$ ,  $dy=5\text{mm}$ ,  $dz=5\text{mm}$   
 Reference Value = 35.3 V/m, Power Drift = -0.1 dB  
 Maximum value of SAR (measured) = 1.06 mW/g  
 Peak SAR (extrapolated) = 1.43 W/kg  
**SAR(1g) = 0.976 mW/g; SAR(10g) = 0.635 mW/g**



file://C:\Dasy4\20Reports\K7\K493LC%20#B79L\PCS head and muscle\FCC-835Mhz ... 6/29/2004

Date/Time: 05/27/04 00:30:56

Test Laboratory: Kyocera

### 835Mhz Validation at 20dB using Dipole 453

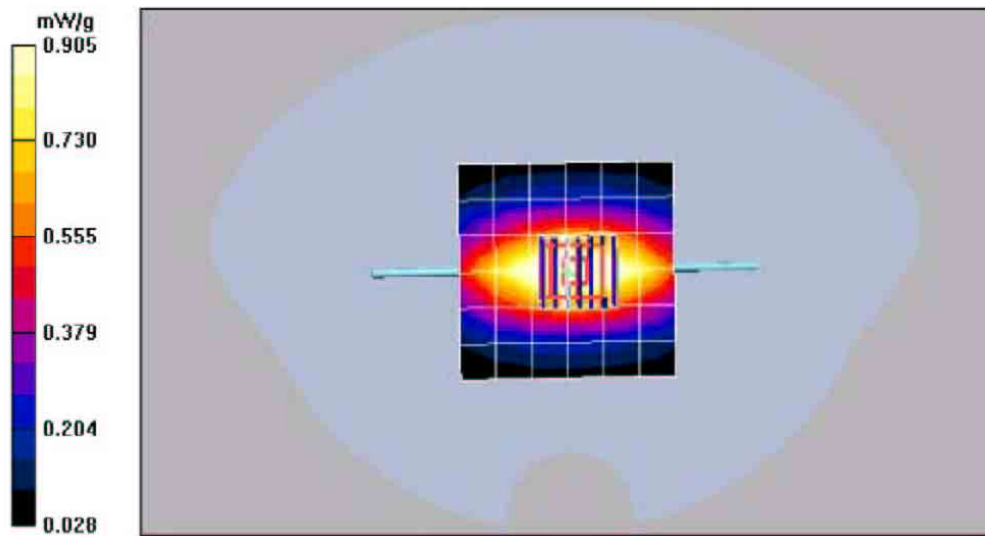
Communication System: CW, Frequency: 835 MHz, Duty Cycle: 1:1  
 Medium: HSL900, Medium parameters used:  $f = 835 \text{ MHz}$ ,  $\sigma = 0.9 \text{ mho/m}$ ,  $\epsilon_r = 41$ ,  $\rho = 1000 \text{ kg/m}^3$   
 Phantom: SAM 12, Phantom section: Flat Section

**DASY4 Configuration:**  
 Probe: ET3DV6 - SN1663, ConvF(6.7, 6.7, 6.7), Calibrated: 10/10/2003  
 Sensor-Surface: 4mm (Mechanical And Optical Surface Detection)  
 Sensor-Surface: 0mm (Fix Surface)  
 Electronics: DAE3 Sn493, Calibrated: 11/25/2003  
 Measurement SW: DASY4, V4.2 Build 44  
 Postprocessing SW: SEMCAD, V1.3 Build 112

**Temperature**  
 Room T = 21.8 +/- 1 deg C, Liquid T = 22.0 +/- 1 deg C

### 20 dbm validation/Zoom Scan (7x7x7)/Cube 0: Measurement grid dx=5mm, dy=5mm, dz=5mm

Reference Value = 36 V/m, Power Drift = -0.005 dB  
 Maximum value of SAR (measured) = 1.06 mW/g  
 Peak SAR (extrapolated) = 1.45 W/kg  
**SAR(1 g) = 0.983 mW/g; SAR(10 g) = 0.640 mW/g**



file://C:\Dasy4\Reports\Validations\Room%20%20AMPS-CDMA800\835Mhz%20V... 6/25/2004

Date/Time: 05/28/04 00:23:49

Test Laboratory: Kyocera

**835Mhz Validation at 20dB using Dipole 453**

Communication System: CW, Frequency: 835 MHz, Duty Cycle: 1:1

Medium: HSL900, Medium parameters used:  $f = 835$  MHz,  $\sigma = 0.891$  mho/m,  $\epsilon_r = 41$ ,  $\rho = 1000$  kg/m<sup>3</sup>

Phantom: SAM 12, Phantom section: Flat Section

**DASY4 Configuration:**

Probe: ET3DV6 - SN1663, ConvF(6.7, 6.7, 6.7), Calibrated: 10/10/2003

Sensor-Surface: 4mm (Mechanical And Optical Surface Detection)

Sensor-Surface: 0mm (Fix Surface)

Electronics: DAE3 Sn493, Calibrated: 11/25/2003

Measurement SW: DASY4, V4.2 Build 44

Postprocessing SW: SEMCAD, V1.3 Build 112

**Temperature**

Room T = 21.8 +/- 1 deg C, Liquid T = 22.0 +/- 1 deg C

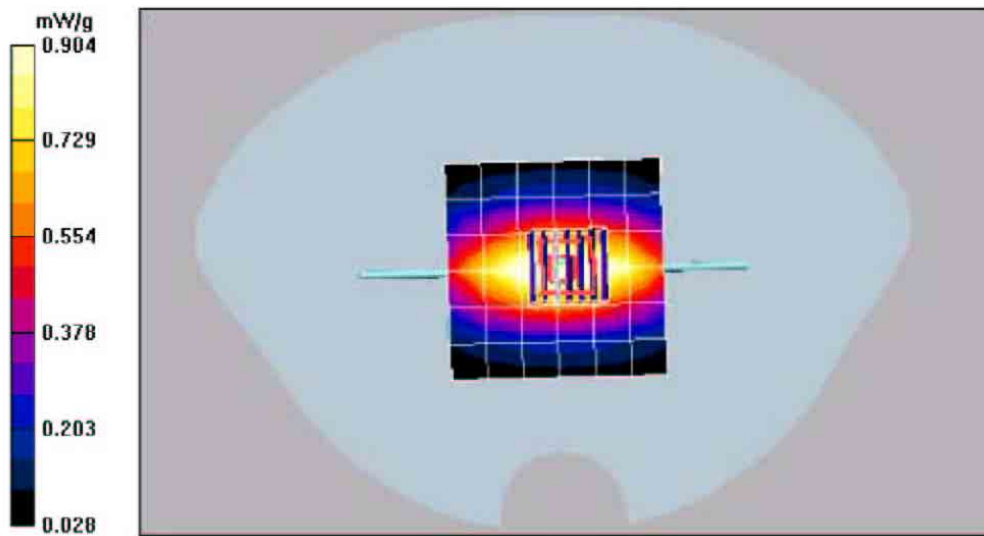
**20 dbm validation/Zoom Scan (7x7x7)/Cube 0:** Measurement grid dx=5mm, dy=5mm, dz=5mm

Reference Value = 35.8 V/m, Power DnB = -0.002 dB

Maximum value of SAR (measured) = 1.06 mW/g

Peak SAR (extrapolated) = 1.45 W/kg

SAR(1 g) = 0.974 mW/g; SAR(10 g) = 0.634 mW/g



file://C:\Dasy4\Reports\Validations\Room%20%20AMPS-CDMA800\835Mhz%20V... 6/25/2004

Date/Time: 06/01/04 00:32:58

Test Laboratory: Kyocera

**835Mhz Validation at 20dB using Dipole 453**

Communication System: CW, Frequency: 835 MHz, Duty Cycle: 1:1  
Medium: HSL900, Medium parameters used:  $f = 835$  MHz,  $\sigma = 0.901$  mho/m,  $\epsilon_r = 40.6$ ,  $\rho = 1000$  kg/m<sup>3</sup>  
Phantom: SAM 12, Phantom section: Flat Section

**DASY4 Configuration:**

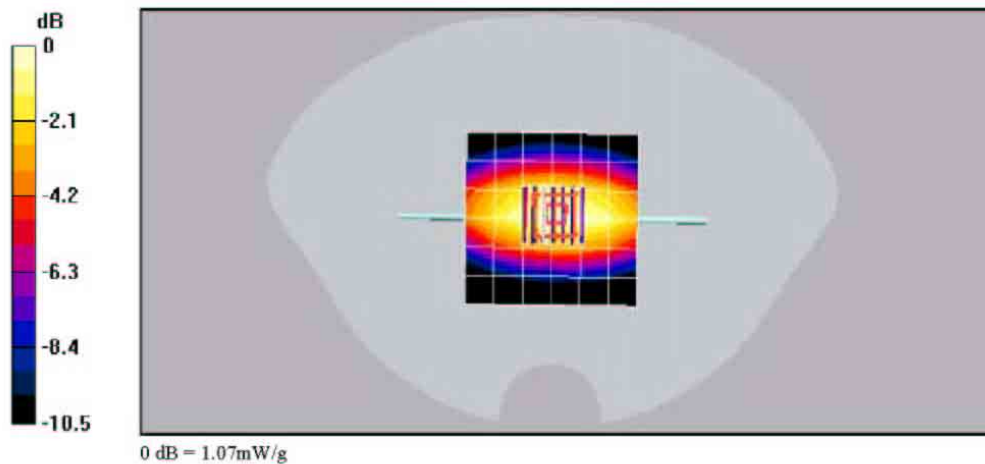
Probe: ET3DV6 - SN1663, ConvF(6.7, 6.7, 6.7), Calibrated: 10/10/2003  
Sensor Surface: 4mm (Mechanical And Optical Surface Detection),  
Electronics: DAE3 Sn493, Calibrated: 11/25/2003  
Measurement SW: DASY4, V4.2 Build 44  
Postprocessing SW: SEMCAD, V1.8 Build 112

**Temperature:**

Room T = 21.8 +/- 1 deg C, Liquid T = 22.0 +/- 1 deg C

**20 dbm validation/Zoom Scan (7x7x7)/Cube 0:** Measurement grid: dx=5mm, dy=5mm, dz=5mm

Reference Value = 35.6 V/m, Power Drift = 0.0 dB  
Maximum value of SAR (measured) = 1.07 mW/g  
Peak SAR (extrapolated) = 1.43 W/kg  
SAR(1g) = 0.995 mW/g; SAR(10g) = 0.646 mW/g



file://C:\Dasy4\20Reports\K7\K493LC%20#B79L\PCS head and muscle\FCC-835Mhz ... 6/29/2004



Date/Time: 06/02/04 00:32:16

Test Laboratory: Kyocera

### 835Mhz Validation at 20dB using Dipole 453

Communication System: CW, Frequency: 835 MHz, Duty Cycle: 1:1

Medium: HSL900, Medium parameters used:  $f = 835$  MHz,  $\sigma = 0.884$  mho/m,  $\epsilon_r = 39.9$ ,  $\rho = 1000$  kg/m<sup>3</sup>

Phantom: SAM 12, Phantom section: Flat Section

**DASY4 Configuration:**

Probe: ET3DV6 - SN1663, ConvF(6.7, 6.7, 6.7), Calibrated: 10/10/2003

Sensor: Surface 4mm (Mechanical And Optical Surface Detection),

Electronics: DAE3 S0493, Calibrated: 11/25/2003

Measurement SW: DASY4, V4.2 Build 44

Postprocessing SW: SEMCAD, V1.8 Build 112

**Temperature**

Room T = 21.8 +/- 1 deg C, Liquid T = 22.0 +/- 1 deg C

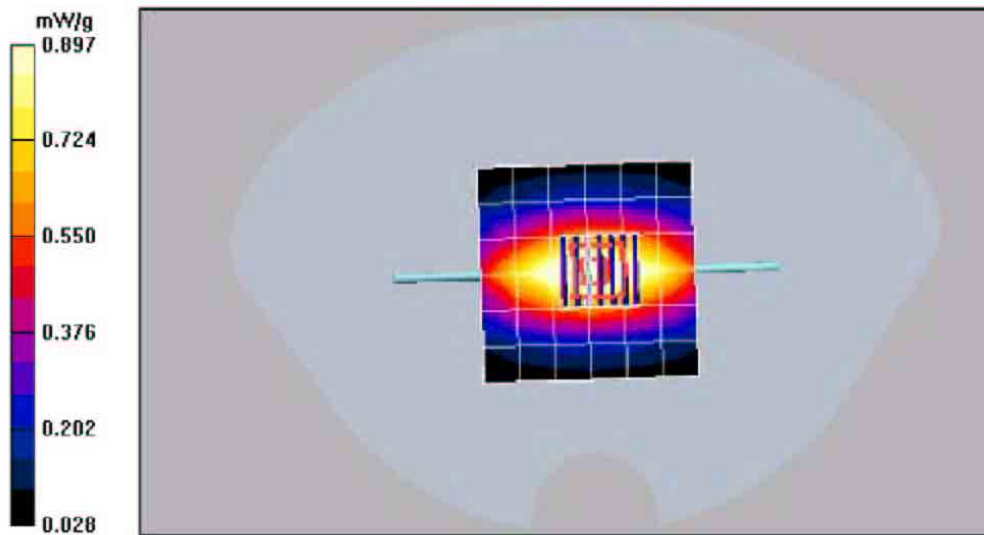
**20 dbm validation/Zoom Scan (7x7x7)/Cube 0:** Measurement grid: dx=5mm, dy=5mm, dz=5mm

Reference Value = 36.2 V/m, Power DnB = -0.008 dB

Maximum value of SAR (measured) = 1.05 mW/g

Peak SAR (extrapolated) = 1.43 W/kg

SAR(1g) = 0.969 mW/g, SAR(10g) = 0.630 mW/g



file://C:\Dasy4\20Reports\Validations\Room%20%20AMPS-CDMA800\FCC-835Mhz... 6/25/2004

Date/Time: 06/03/04 00:15:49

Test Laboratory: Kyocera

### 835Mhz Validation at 20dB using Dipole 453

Communication System: CW, Frequency: 835 MHz, Duty Cycle: 1:1

Medium: HSL900, Medium parameters used:  $f = 835$  MHz,  $\sigma = 0.878$  mho/m,  $\epsilon_r = 39.5$ ,  $\rho = 1000$  kg/m<sup>3</sup>

Phantom: SAM 12, Phantom section: Flat Section

#### DASY4 Configuration:

Probe: ET3DV6 - SN1663, ConvF(6.7, 6.7, 6.7), Calibrated: 10/10/2003

Sensor-Surface: 4mm (Mechanical And Optical Surface Detection)

Sensor-Surface: 0mm (Fix Surface)

Electronics: DAE3 Sn493, Calibrated: 11/25/2003

Measurement SW: DASY4, V4.2 Build 44

Postprocessing SW: SEMCAD, V1.3 Build 112

#### Temperature

Room T = 21.8 +/- 1 deg C, Liquid T = 22.0 +/- 1 deg C

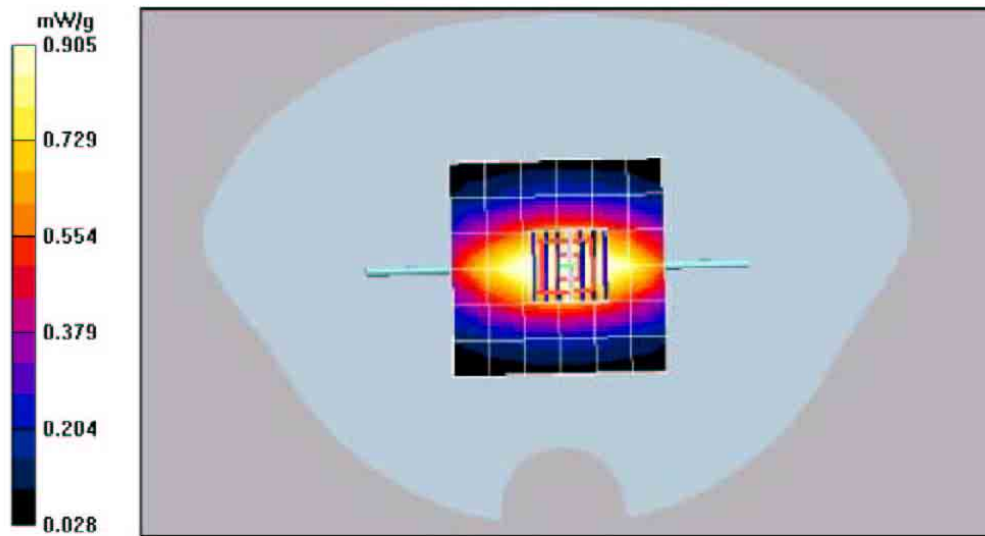
### 20 dbm validation/Zoom Scan (7x7x7)/Cube 0: Measurement grid dx=5mm, dy=5mm, dz=5mm

Reference Value = 36.1 V/m, Power DnB = 0.01 dB

Maximum value of SAR (measured) = 1.07 mW/g

Peak SAR (extrapolated) = 1.47 W/kg

SAR(1 g) = 0.984 mW/g; SAR(10 g) = 0.639 mW/g



file://C:\Dasy4\Reports\Validations\Room%20%20AMPS-CDMA800\FCC-835Mhz... 6/25/2004

Date/Time: 06/04/04 00:30:59

Test Laboratory: Kyocera

### 835Mhz Validation at 20dB using Dipole 453

Communication System: CW, Frequency: 835 MHz, Duty Cycle: 1:1

Medium: HSL900, Medium parameters used:  $f = 835$  MHz,  $\sigma = 0.894$  mho/m,  $\epsilon_r = 40.6$ ,  $\rho = 1000$  kg/m<sup>3</sup>

Phantom: SAM 12, Phantom section: Flat Section

**DASY4 Configuration:**

Probe: ET3DV6 - SN1663, ConvF(6.7, 6.7, 6.7), Calibrated: 10/10/2003

Sensor: Surface 4mm (Mechanical And Optical Surface Detection),

Electronics: DAE3 S0493, Calibrated: 11/25/2003

Measurement SW: DASY4, V4.2 Build 44

Postprocessing SW: SEMCAD, V1.8 Build 112

**Temperature**

Room T = 21.8 +/- 1 deg C, Liquid T = 22.0 +/- 1 deg C

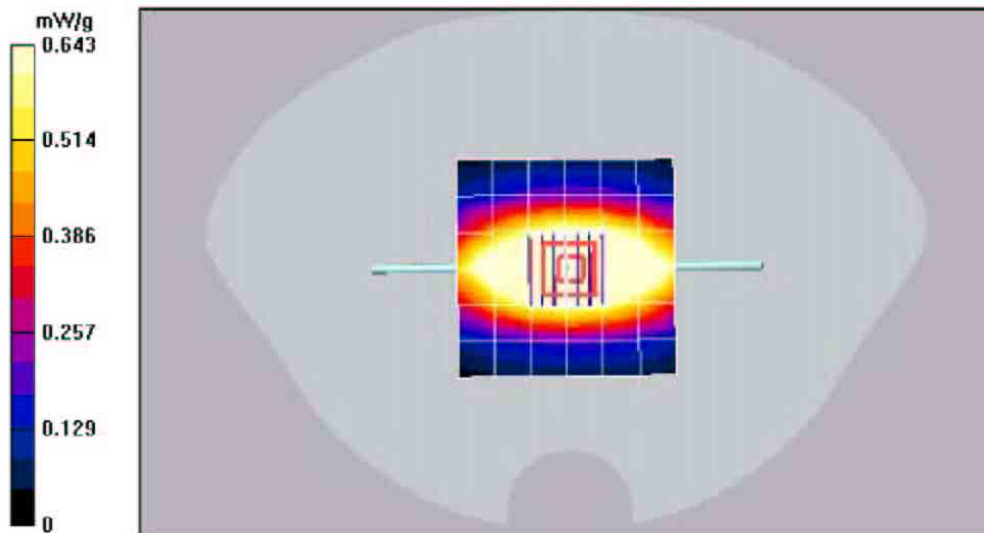
**20 dbm validation/Zoom Scan (7x7x7)/Cube 0:** Measurement grid: dx=5mm, dy=5mm, dz=5mm

Reference Value = 36.5 V/m, Power DnB = -0.008 dB

Maximum value of SAR (measured) = 1.1 mW/g

Peak SAR (extrapolated) = 1.51 W/kg

SAR(1g) = 1.01 mW/g; SAR(10g) = 0.657 mW/g



file://C:\Dasy4\Reports\Validations\Room%20%20AMPS-CDMA800\FCC-835Mhz... 6/25/2004

Date/Time: 06/07/04 00:34:07

Test Laboratory: Kyocera

**835Mhz Validation at 20dB using Dipole 453**

Communication System: CW, Frequency: 835 MHz, Duty Cycle: 1:1  
Medium: HSL900, Medium parameters used:  $f = 835$  MHz,  $\sigma = 0.899$  mho/m,  $\epsilon_r = 40.8$ ,  $\rho = 1000$  kg/m<sup>3</sup>  
Phantom: SAM 12, Phantom section: Flat Section

**DASY4 Configuration:**

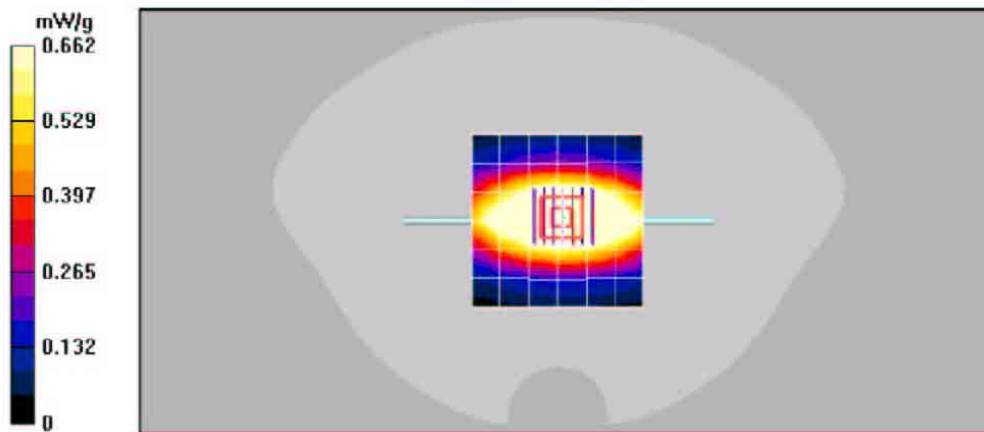
Probe: ET3DV6 - SN1663, ConvF(6.7, 6.7, 6.7), Calibrated: 10/10/2003  
Sensor Surface: 4mm (Mechanical And Optical Surface Detection),  
Electronics: DAE3 Sn493, Calibrated: 11/25/2003  
Measurement SW: DASY4, V4.2 Build 44  
Postprocessing SW: SEMCAD, V1.8 Build 112

**Temperature:**

Room T = 21.8 +/- 1 deg C, Liquid T = 22.0 +/- 1 deg C

**20 dbm validation/Zoom Scan (7x7x7)/Cube 0: Measurement grid: dx=5mm, dy=5mm, dz=5mm**

Reference Value = 36.6 V/m, Power Drift = 0.3 dB  
Maximum value of SAR (measured) = 1.11 mW/g  
Peak SAR (extrapolated) = 1.5 W/kg  
SAR(1g) = 1.03 mW/g; SAR(10g) = 0.670 mW/g



file://C:\Dasy4\20Reports\K7\K493LC%20#B79L\PCS head and muscle\FCC-835Mhz ... 6/29/2004

Date/Time: 06/03/04 00:27:46

Test Laboratory: Kyocera

### 835Mhz Validation at 20dBm using Dipole 495

Communication System: CW, Frequency: 835 MHz, Duty Cycle 1:1

Medium: HSL900, Medium parameters used:  $f = 835$  MHz;  $\sigma = 0.905$  mho/m;  $\epsilon_r = 41.2$ ;  $\rho = 1000$  kg/m<sup>3</sup>

Phantom: SAM 12, Phantom section: Flat Section

**DASY4 Configuration:**

Probe: ET3DV6 - SN1663, ConvF(6.7, 6.7, 6.7), Calibrated: 10/10/2003

Sensor: Surface 4mm (Mechanical And Optical Surface Detection),

Electronics: DAE3 Sn493, Calibrated: 11/25/2003

Measurement SW: DASY4, V4.2 Build 44

Postprocessing SW: SEMCAD, V1.3 Build 112

**Temperature**

Room T = 21.8 +/- 1 deg C, Liquid T = 22.0 +/- 1 deg C

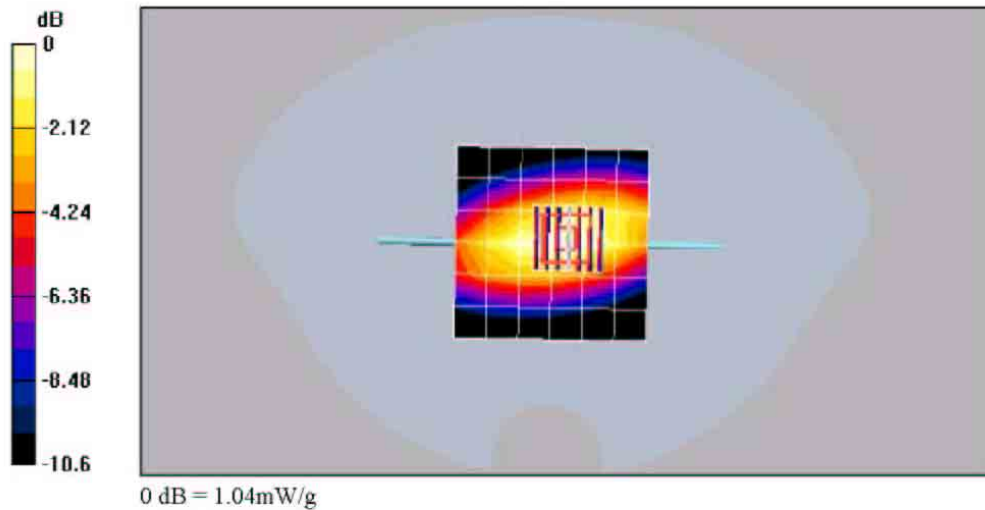
**20 dbm validation/Zoom Scan (7x7x7)/Cube 0:** Measurement grid dx=5mm, dy=5mm, dz=5mm

Reference Value = 35.3 V/m, Power Dn @ = -0.0 dB

Maximum value of SAR (measured) = 1.04 mW/g

Peak SAR (extrapolated) = 1.4 W/kg

SAR(1 g) = 0.964 mW/g; SAR(10 g) = 0.630 mW/g



file://C:\Dasy4\Reports\Validations\Room%20%20AMPS-CDMA800\FCC-835Mhz... 6/16/2004

Date/Time: 06/09/04 00:23:01

Test Laboratory: Kyocera

**835Mhz Validation at 20dB Probe 1663, DAE 493, Dipole 453**

Communication System: CW, Frequency: 835 MHz, Duty Cycle: 1:1

Medium: HSL900, Medium parameters used:  $f = 835$  MHz,  $\sigma = 0.894$  mho/m,  $\epsilon_r = 40.8$ ,  $\rho = 1000$  kg/m<sup>3</sup>

Phantom: SAM 12, Phantom section: Flat Section

**DASY4 Configuration:**

Probe: ET3DV6 - SN1663, ConvF(6.7, 6.7, 6.7), Calibrated: 10/10/2003

Sensor: Surface 4mm (Mechanical And Optical Surface Detection),

Electronics: DAE3 S0493, Calibrated: 11/25/2003

Measurement SW: DASY4, V4.2 Build 44

Postprocessing SW: SEMCAD, V1.8 Build 112

**Temperature**

Room T = 21.8 +/- 1 deg C, Liquid T = 22.0 +/- 1 deg C

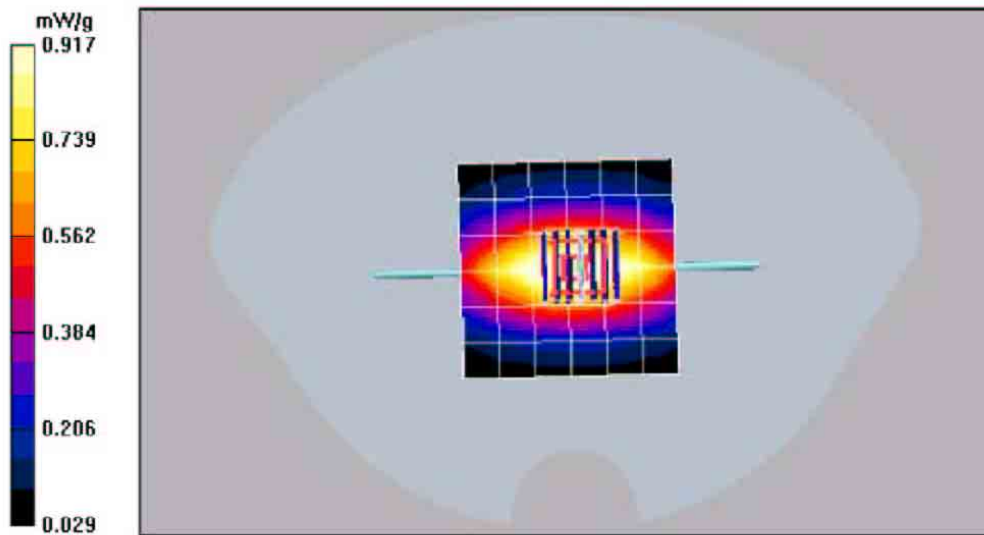
**20 dbm validation/Zoom Scan (7x7x7)/Cube 0: Measurement grid dx=5mm, dy=5mm, dz=5mm**

Reference Value = 36.2 V/m, Power DnB = 0.0 dB

Maximum value of SAR (measured) = 1.07 mW/g

Peak SAR (extrapolated) = 1.45 W/kg

SAR(1 g) = 0.992 mW/g, SAR(10 g) = 0.648 mW/g



file://C:\Dasy4\Reports\Validations\Room%20%20AMPS-CDMA800\FCC-835Mhz... 6/25/2004

Date/Time: 06/10/04 00:29:20

Test Laboratory: Kyocera

**835Mhz Validation at 20dB using Dipole 453**

Communication System: CW, Frequency: 835 MHz, Duty Cycle: 1:1  
Medium: HSL900, Medium parameters used:  $f = 835$  MHz,  $\sigma = 0.909$  mho/m,  $\epsilon_r = 41.8$ ,  $\rho = 1000$  kg/m<sup>3</sup>  
Phantom: SAM 12, Phantom section: Flat Section

**DASY4 Configuration:**

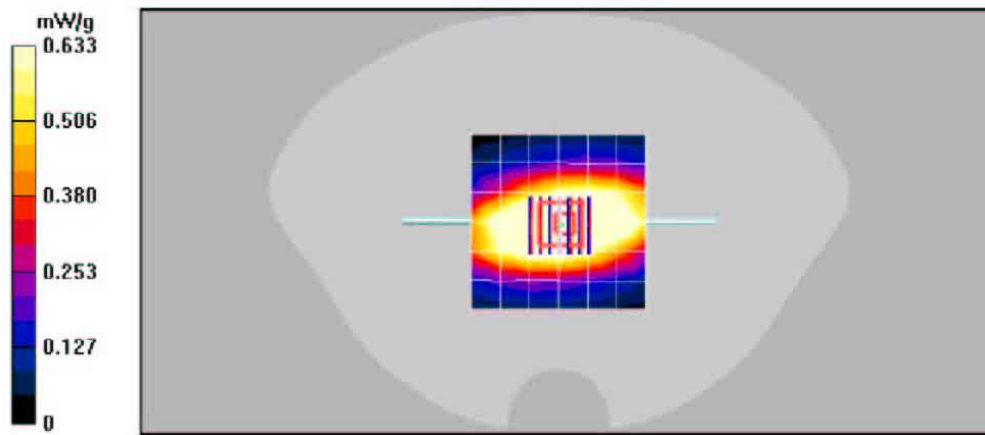
Probe: ET3DV6 - SN1663, ConvF(6.7, 6.7, 6.7), Calibrated: 10/10/2003  
Sensor Surface: 4mm (Mechanical And Optical Surface Detection),  
Electronics: DAE3 Sn493, Calibrated: 11/25/2003  
Measurement SW: DASY4, V4.2 Build 44  
Postprocessing SW: SEMCAD, V1.8 Build 112

**Temperature:**

Room T = 21.8 +/- 1 deg C, Liquid T = 22.0 +/- 1 deg C

**20 dbm validation/Zoom Scan (7x7x7)/Cube 0: Measurement grid: dx=5mm, dy=5mm, dz=5mm**

Reference Value = 35.7 V/m, Power Drift = -0.0 dB  
Maximum value of SAR (measured) = 1.06 mW/g  
Peak SAR (extrapolated) = 1.44 W/kg  
SAR(1 g) = 0.986 mW/g; SAR(10 g) = 0.644 mW/g



file://C:\Dasy4\20Reports\K7\K493LC%20#B79L\PCS head and muscle\FCC-835Mhz ... 6/29/2004

Date/Time: 06/11/04 00:22:39

Test Laboratory: Kyocera

**835Mhz Validation at 20dB using Dipole 453**

Communication System: CW, Frequency: 835 MHz, Duty Cycle: 1:1

Medium: HSL900, Medium parameters used:  $f = 835$  MHz,  $\sigma = 0.831$  mho/m,  $\epsilon_r = 41$ ,  $\rho = 1000$  kg/m<sup>3</sup>

Phantom: SAM 12, Phantom section: Flat Section

**DASY4 Configuration:**

Probe: ET3DV6 - SN1663, ConvF(6.7, 6.7, 6.7), Calibrated: 10/10/2003

Sensor: Surface 4mm (Mechanical And Optical Surface Detection),

Electronics: DAE3 S0493, Calibrated: 11/25/2003

Measurement SW: DASY4, V4.2 Build 44

Postprocessing SW: SEMCAD, V1.8 Build 112

**Temperature**

Room T = 21.8 +/- 1 deg C, Liquid T = 22.0 +/- 1 deg C

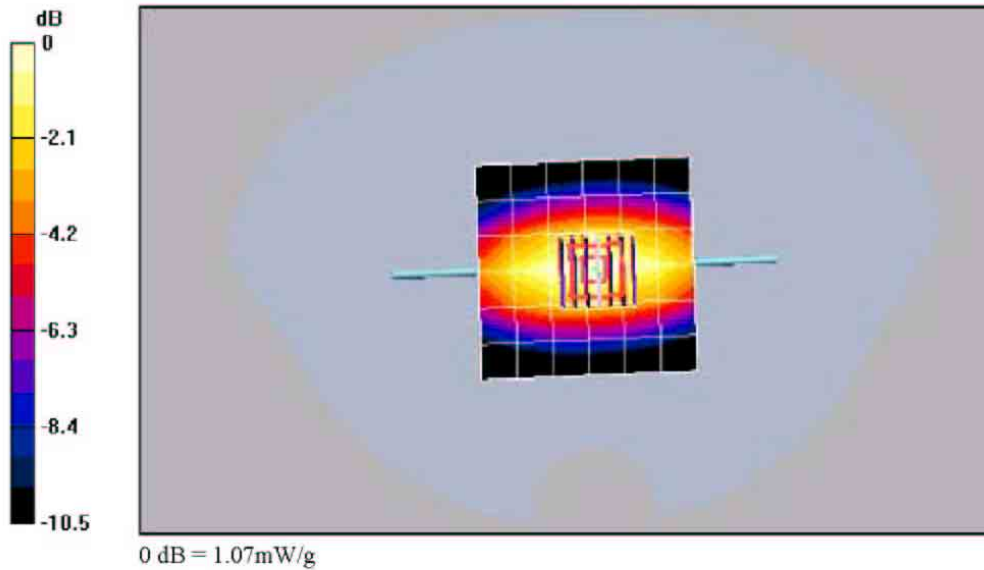
**20 dbm validation/Zoom Scan (7x7x7)/Cube 0:** Measurement grid: dx=5mm, dy=5mm, dz=5mm

Reference Value = 36.4 V/m, Power DnB = 0.004 dB

Maximum value of SAR (measured) = 1.07 mW/g

Peak SAR (extrapolated) = 1.45 W/kg

SAR(1 g) = 0.983 mW/g SAR(10 g) = 0.642 mW/g



file://C:\Dasy4\Reports\Validations\Room%20%20AMPS-CDMA800\FCC-835Mhz... 6/25/2004



Date/Time: 06/14/04 00:24:48

Test Laboratory: Kyocera

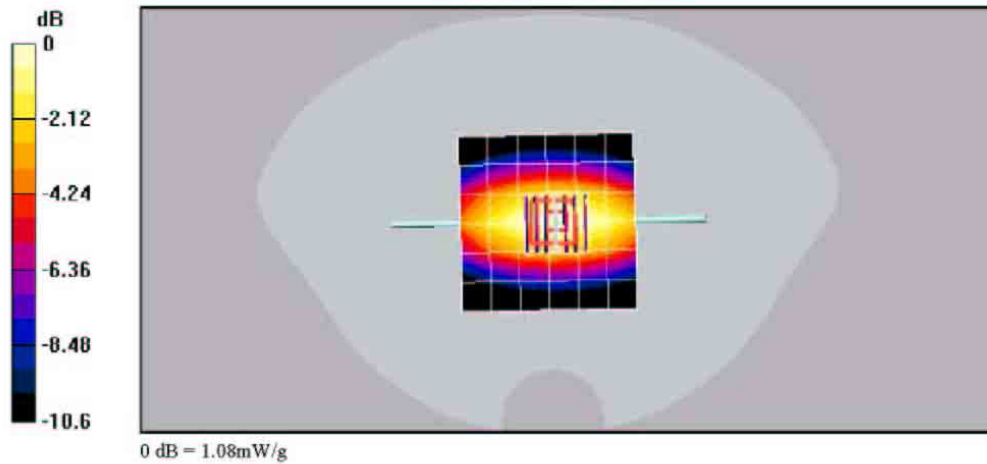
**835Mhz Validation at 20dB using Dipole 453**

Communication System: CW, Frequency: 835 MHz, Duty Cycle: 1:1  
 Medium: HSL900, Medium parameters used:  $f = 835 \text{ MHz}$ ,  $\sigma = 0.909 \text{ mho/m}$ ,  $\epsilon_r = 41.3$ ,  $\rho = 1000 \text{ kg/m}^3$   
 Phantom: SAM 12, Phantom section: Flat Section

**DASY4 Configuration:**  
 Probe: ET3DV6 - SN1663, ConvF(6.7, 6.7, 6.7), Calibrated: 10/10/2003  
 Sensor Surface: 4mm (Mechanical And Optical Surface Detection),  
 Electronics: DAE3 Sn493, Calibrated: 11/25/2003  
 Measurement SW: DASY4, V4.2 Build 44  
 Postprocessing SW: SEMCAD, V1.3 Build 112

**Temperature:**  
 Room T = 21.8 +/- 1 deg C, Liquid T = 22.0 +/- 1 deg C

**20 dbm validation/Zoom Scan (7x7x7)/Cube 0:** Measurement grid:  $dx=5\text{mm}$ ,  $dy=5\text{mm}$ ,  $dz=5\text{mm}$   
 Reference Value = 35.3 V/m, Power Drift = -0.0 dB  
 Maximum value of SAR (measured) = 1.08 mW/g  
 Peak SAR (extrapolated) = 1.47 W/kg  
**SAR(1g) = 0.998 mW/g; SAR(10g) = 0.650 mW/g**



file://C:\Dasy4\20Reports\K7\K493LC%20#B79L\PCS head and muscle\FCC-835Mhz ... 6/29/2004

Date/Time: 06/15/04 00:34:44

Test Laboratory: Kyocera

**835Mhz Validation at 20dB using Dipole 453**

Communication System: CW, Frequency: 835 MHz, Duty Cycle: 1:1  
Medium: HSL900, Medium parameters used:  $f = 835$  MHz,  $\sigma = 0.925$  mho/m,  $\epsilon_r = 40$ ,  $\rho = 1000$  kg/m<sup>3</sup>  
Phantom: SAM 12, Phantom section: Flat Section

**DASY4 Configuration:**

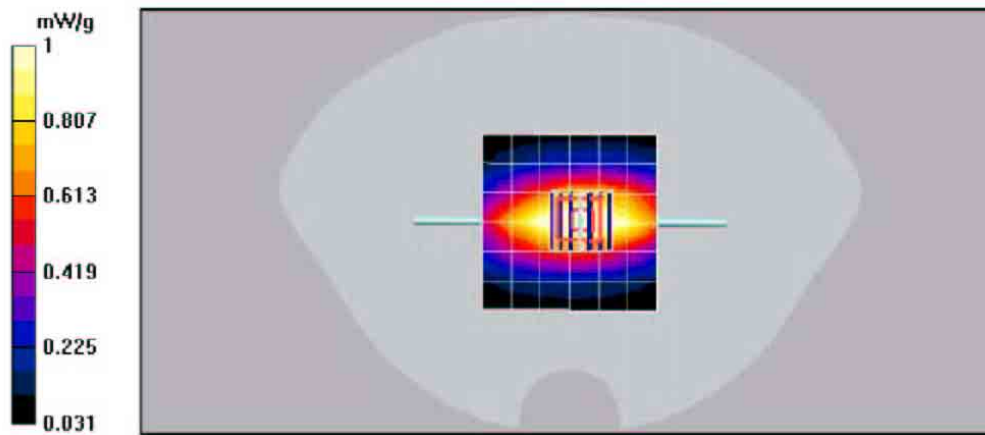
Probe: ET3DV6 - SN1663, ConvF(6.7, 6.7, 6.7), Calibrated: 10/10/2003  
Sensor Surface: 4mm (Mechanical And Optical Surface Detection),  
Electronics: DAE3 Sn493, Calibrated: 11/25/2003  
Measurement SW: DASY4, V4.2 Build 44  
Postprocessing SW: SEMCAD, V1.8 Build 112

**Temperature:**

Room T = 21.8 +/- 1 deg C, Liquid T = 22.0 +/- 1 deg C

**20 dbm validation/Zoom Scan (7x7x7)/Cube 0: Measurement grid: dx=5mm, dy=5mm, dz=5mm**

Reference Value = 36.3 V/A, Power Drift = -0.0 dB  
Maximum value of SAR (measured) = 1.13 mW/g  
Peak SAR (extrapolated) = 1.52 W/kg  
SAR(1 g) = 1.05 mW/g; SAR(10 g) = 0.685 mW/g



file://C:\Dasy4\20Reports\K7\K493LC%20#B79L\PCS head and muscle\FCC-835Mhz ... 6/29/2004

Date/Time: 06/16/04 01:48:04

Test Laboratory: Kyocera

**835Mhz Validation @20dBm Probe 1663, DAE 493, Dipole 453**

Communication System: CW, Frequency: 835 MHz, Duty Cycle 1:1

Medium: HSL900, Medium parameters used:  $f = 835$  MHz;  $\sigma = 0.898$  mho/m;  $\epsilon_r = 41$ ;  $\rho = 1000$  kg/m<sup>3</sup>

Phantom: SAM 12, Phantom section: Flat Section

**DASY4 Configuration:**

Probe: ET3DV6 - SN1663, ConvF(6.7, 6.7, 6.7), Calibrated: 10/10/2003

Sensor: Surface 4mm (Mechanical And Optical Surface Detection),

Electronics: DAE3 Sn493, Calibrated: 11/25/2003

Measurement SW: DASY4, V4.2 Build 44

Postprocessing SW: SEMCAD, V1.3 Build 112

**Temperature:**

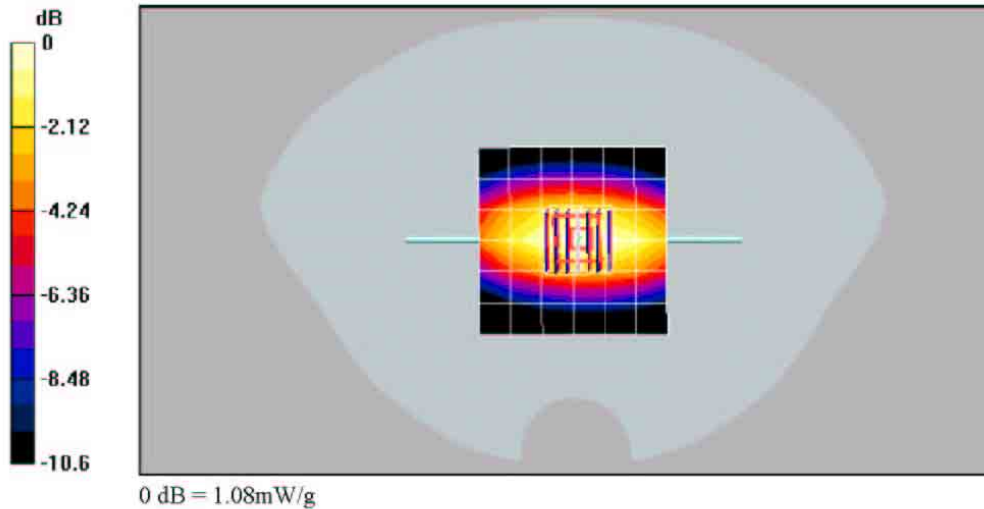
Room T = 21.8 +/- 1 deg C, Liquid T = 22.0 +/- 1 deg C

**20 dbm validation/Zoom Scan (7x7x7)/Cube 0:** Measurement grid dx=5mm, dy=5mm, dz=5mmReference Value = 35.7 V/m, Power Dn  $\hat{n} = 0.001$  dB

Maximum value of SAR (measured) = 1.08 mW/g

Peak SAR (extrapolated) = 1.45 W/kg

SAR(1 g) = 0.992 mW/g; SAR(10 g) = 0.648 mW/g



file://C:\Dasy4\20Reports\K7\K484LC%20#9LTS\AMPS Head &amp; Muscle\FCC-835Mhz ... 6/17/2004

Date/Time: 06/22/04 00:38:38

Test Laboratory: Kyocera

**835Mhz Validation at 20dB using Dipole 453**

Communication System: CW, Frequency: 835 MHz, Duty Cycle: 1:1  
Medium: HSL900, Medium parameters used:  $f = 835$  MHz,  $\sigma = 0.924$  mho/m,  $\epsilon_r = 41.6$ ,  $\rho = 1000$  kg/m<sup>3</sup>  
Phantom: SAM 12, Phantom section: Flat Section

**DASY4 Configuration:**

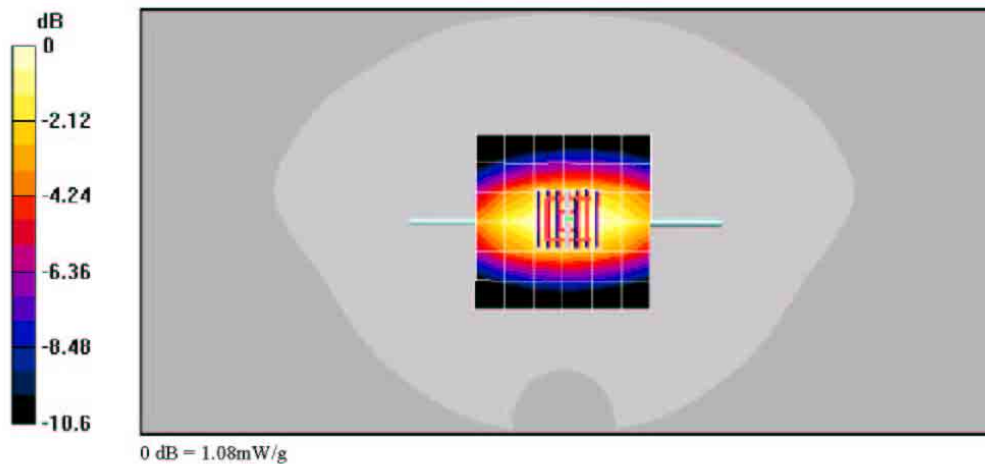
Probe: ET3DV6 - SN1663, ConvF(6.7, 6.7, 6.7), Calibrated: 10/10/2003  
Sensor Surface: 4mm (Mechanical And Optical Surface Detection),  
Electronics: DAE3 Sn493, Calibrated: 11/25/2003  
Measurement SW: DASY4, V4.2 Build 44  
Postprocessing SW: SEMCAD, V1.8 Build 112

**Temperature:**

Room T = 21.8 +/- 1 deg C, Liquid T = 22.0 +/- 1 deg C

**20 dbm validation/Zoom Scan (7x7x7)/Cube 0: Measurement grid: dx=5mm, dy=5mm, dz=5mm**

Reference Value = 35.5 V/m, Power Drift = -0.0 dB  
Maximum value of SAR (measured) = 1.08 mW/g  
Peak SAR (extrapolated) = 1.46 W/kg  
SAR(1 g) = 0.994 mW/g; SAR(10 g) = 0.648 mW/g



file://C:\Dasy4\20Reports\K7\K493LC%20#B79L\PCS head and muscle\FCC-835Mhz ... 6/29/2004

Date/Time: 06/23/04 00:23:41

Test Laboratory: Kyocera

**835Mhz Validation at 20dB using Dipole 453**

Communication System: CW, Frequency: 835 MHz, Duty Cycle: 1:1  
Medium: HSL900, Medium parameters used:  $f = 835$  MHz,  $\sigma = 0.895$  mho/m,  $\epsilon_r = 40.5$ ,  $\rho = 1000$  kg/m<sup>3</sup>  
Phantom: SAM 12, Phantom section: Flat Section

**DASY4 Configuration:**

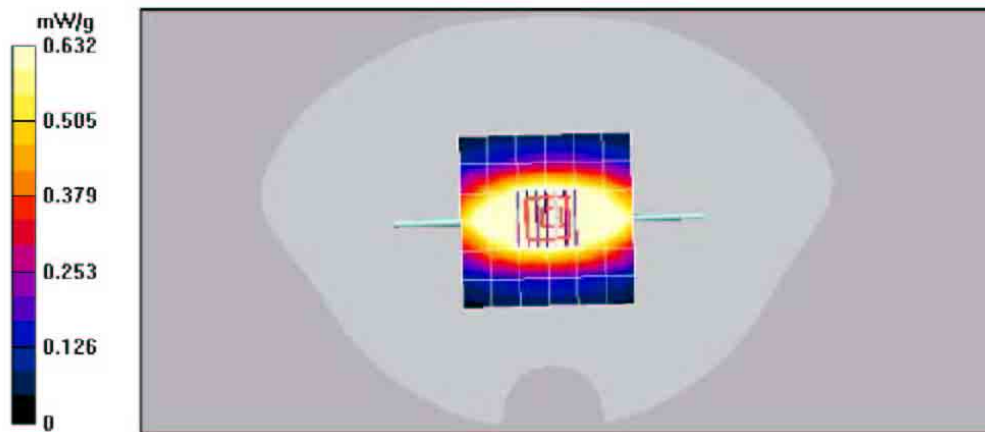
Probe: ET3DV6 - SN1663, ConvF(6.7, 6.7, 6.7), Calibrated: 10/10/2003  
Sensor Surface: 4mm (Mechanical And Optical Surface Detection),  
Electronics: DAE3 Sn493, Calibrated: 11/25/2003  
Measurement SW: DASY4, V4.2 Build 44  
Postprocessing SW: SEMCAD, V1.8 Build 112

**Temperature:**

Room T = 21.8 +/- 1 deg C, Liquid T = 22.0 +/- 1 deg C

**20 dbm validation/Zoom Scan (7x7x7)/Cube 0: Measurement grid: dx=5mm, dy=5mm, dz=5mm**

Reference Value = 36.1 V/m, Power Drift = -0.007 dB  
Maximum value of SAR (measured) = 1.07 mW/g  
Peak SAR (extrapolated) = 1.44 W/kg  
SAR(1 g) = 0.987 mW/g; SAR(10 g) = 0.645 mW/g



file://C:\Dasy4\20Reports\K7\K493LC%20#B79L\PCS head and muscle\FCC-835Mhz ... 6/29/2004

## **Appendix B: SAR distribution printout**

*Please see separate attachments*

## **Appendix C: probe calibration parameters**

*Please see separate attachment*