

Exhibit 8:
OVFKWC-K4X4 Internal Photos
K404A (Rave), K430 (Rave) Family, K450 (Phantom) Family,
K480 (Aktiv) Family, and K490 (Energi) Family

PRODUCT DESCRIPTION.....	2
MECHANICAL HOUSING - K404A (RAVE), K430 (RAVE) FAMILY, K480 (AKTIV) FAMILY.....	3
INSIDE FRONT AND REAR HOUSING	3
INSIDE FRONT HOUSING	4
KEYPAD	5
MECHANICAL HOUSING - K450 (PHANTOM) FAMILY.....	6
INSIDE FRONT AND REAR HOUSING	6
INSIDE FRONT HOUSING	7
KEYPAD	8
MECHANICAL HOUSING - K490 (ENERGI) FAMILY.....	9
INSIDE FRONT AND REAR HOUSING	9
INSIDE FRONT HOUSING	10
KEYPAD	11
PCB SIDE 1 - K404A (RAVE), K430 (RAVE) FAMILY, K480 (AKTIV) FAMILY, AND K490 (ENERGI) FAMILY.....	12
PCB SIDE 1	12
PCB SIDE 1 (WITH SHIELD CANS)	13
PCB SIDE 1 (SHIELD CANS REMOVED)	14
PCB SIDE 1 - K450 (PHANTOM) FAMILY.....	15
PCB SIDE 1	15
PCB SIDE 1 (WITH SHIELD CANS)	16
PCB SIDE 1 (SHIELD CANS REMOVED)	17
PCB SIDE 2 – K404A (RAVE), K430 (RAVE) FAMILY, K450 (PHANTOM) FAMILY, K480 (AKTIV) FAMILY, AND K490 (ENERGI) FAMILY.....	18
PCB SIDE 2 (WITH SHIELD CANS)	18
PCB SIDE 2 (WITH SHIELD CANS REMOVED)	19

Product Description

The phones OVFKWC-K4X4 are Tri-mode Dual-Band 1XRTT products. Models that contain the letter “L” have integrated Assisted GPS software feature enabled to meet the emergency location requirements of the FCC’s E911 Phase II mandate. The Tri-mode architecture is defined as 1900MHz (PCS CDMA), 800MHz (cellular CDMA and AMPS).

All models included in the OVFKWC-K4X4 filing use the same antenna and have identical PCB layouts in regards to the RF Circuitry, Basic Frequency Determining and Stabilization Circuitry, Basic Modulator Circuit, Transmitter Active Devices, and Tuning Targets. The only differences between models are the mechanical design of each model family’s front housings, choice of color or greyscale LCD, and software applications supported (GPS, Brew, WAP, etc.). See product matrix in Figure 1 below.

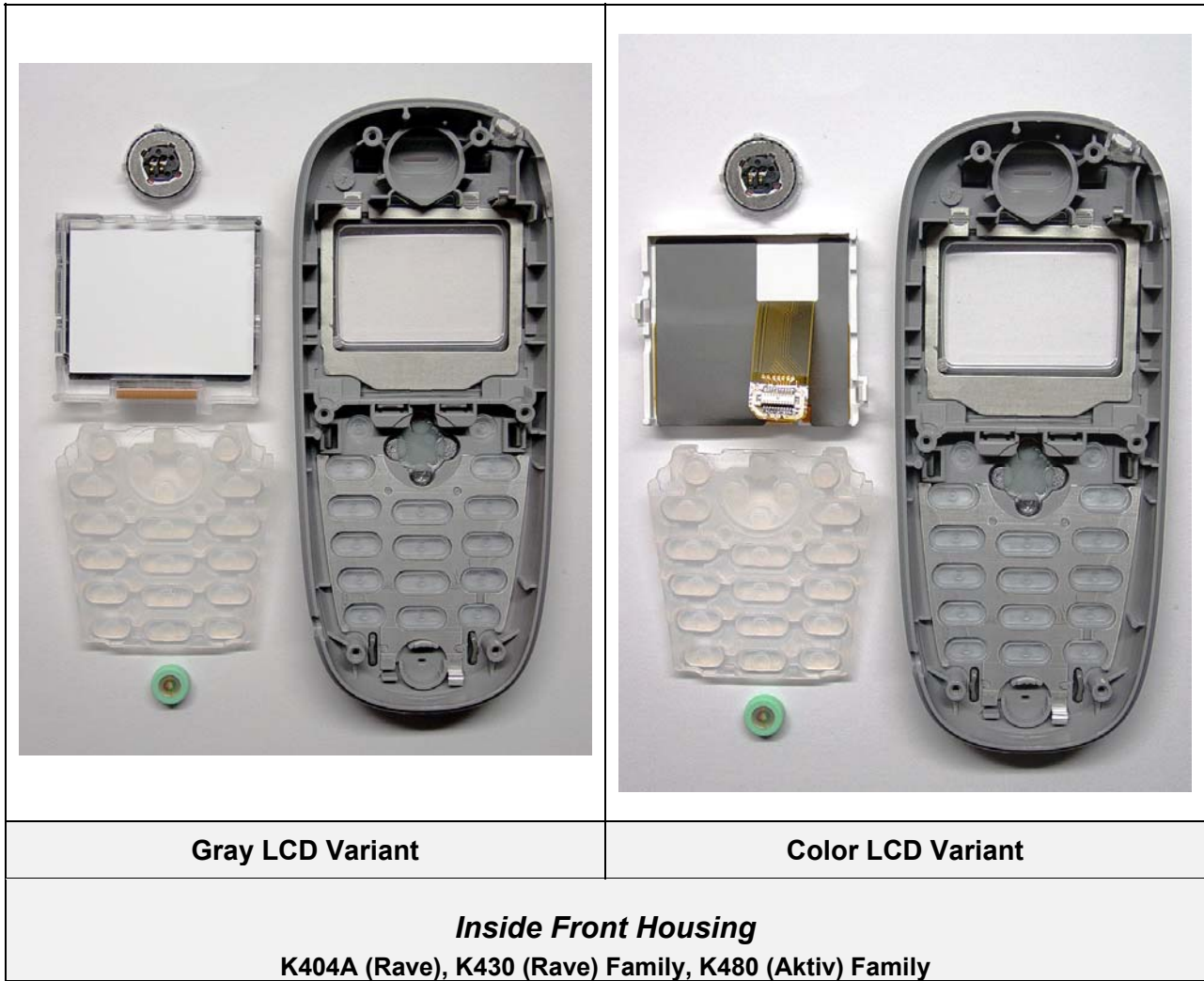
The phone is designed in compliance with the technical specifications for compatibility of mobile and base stations in the Cellular Radio telephone service contained in “Cellular System Mobile Station -Land Station Compatibility Specification” as specified in OET Bulletin 53 and TIA Standards

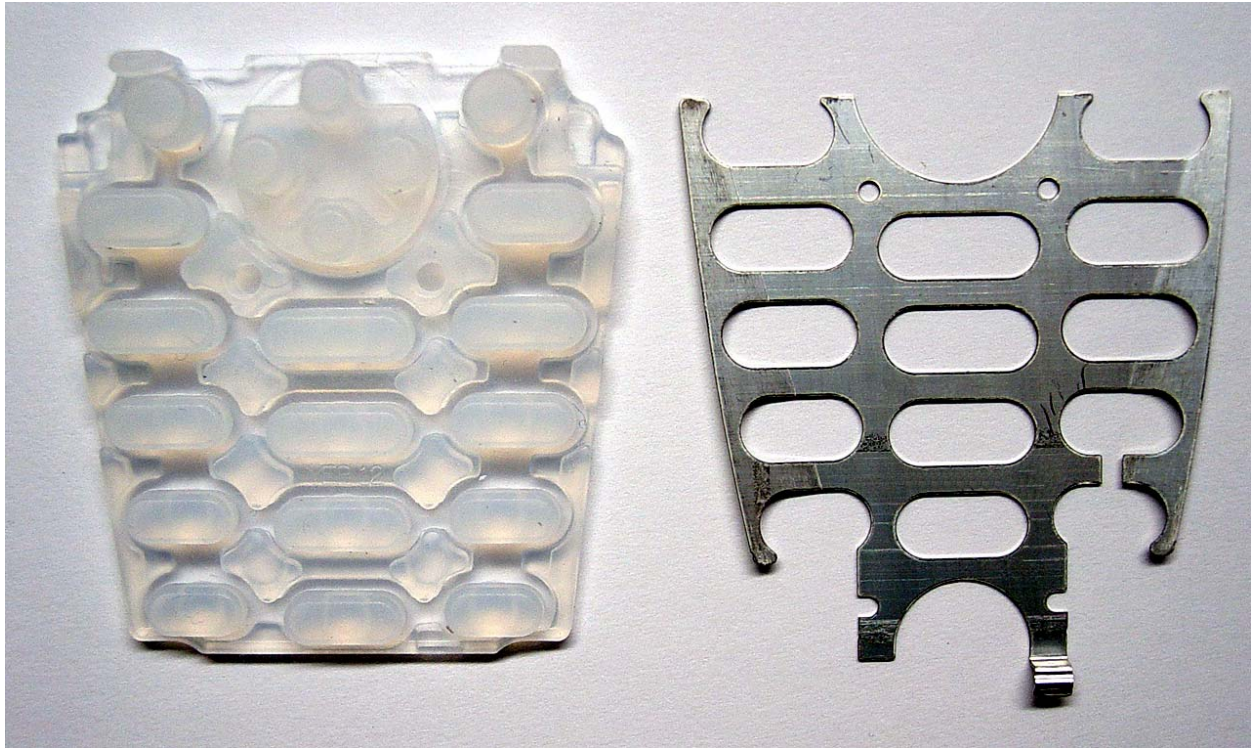
The phone will support certain CDMA2000 radio-configurations (RC) as describes in Exhibit 1 (operation description).

					
	Phantom K450	Rave K404	Rave K430	Aktiv K480	Energi K490
	Non-BREW / BREW		Non-BREW / BREW	Non-BREW / BREW	Non-BREW / BREW
KWC Trimode/GPS/Greyscale	K454L		K434L	K484L	
KWC Trimode/no GPS/Greyscale	K454N		K434N	K484N	
KWC Trimode/GPS/Color	K454LC / K454XLC	K404A	K434LC / K434XLC	K484LC / K484XLC	K494LC / K494XLC
KWC Trimode/no GPS/Color	K454NC / K454XNC		K434NC / K434XNC	K484NC / K484XNC	K494NC / K494XNC
KWC Trimode/GPS/WAP 2.0	K454MC / K454XMC		K434MC / K434XMC	K484MC / K484XMC	K494MC / K494XMC

Figure 1 OVFKWC-K4X4 Product Matrix

Mechanical Housing - K404A (Rave), K430 (Rave) Family, K480 (Aktiv) Family





Keypad

K404A (Rave), K430 (Rave) Family, K480 (Aktiv) Family

Mechanical Housing - K450 (Phantom) Family







Keypad
K450 (Phantom) Family

Mechanical Housing - K490 (Energi) Family



Color LCD Variant

Inside Front and Rear Housing
K490 (Energi) Family



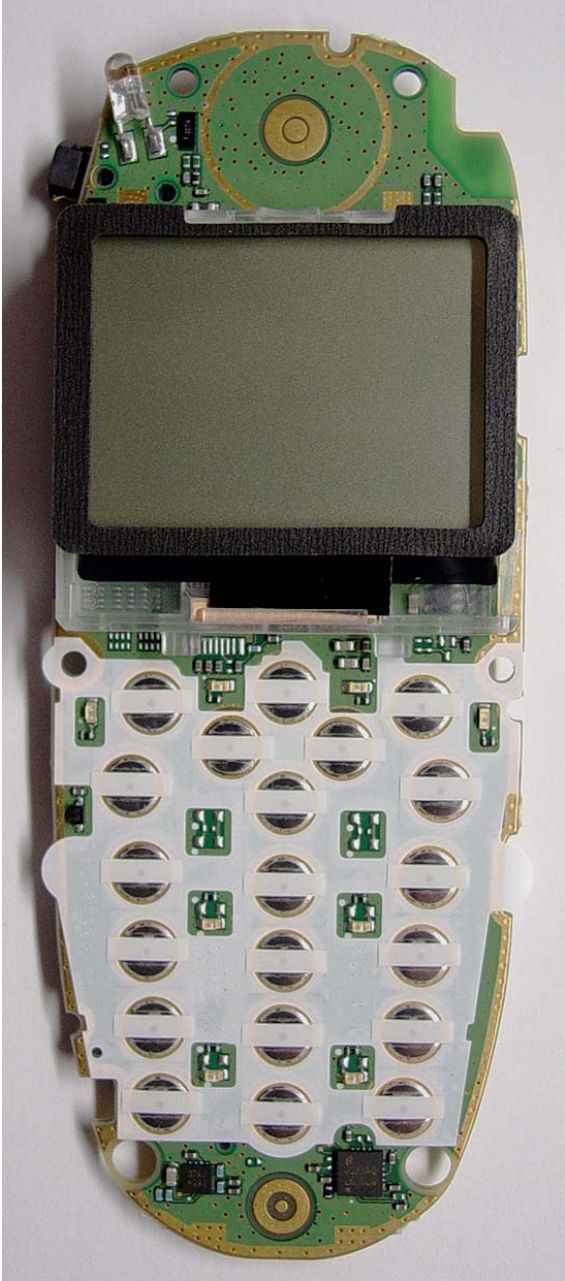

Color LCD Variant

Inside Front Housing
K490 (Energi) Family

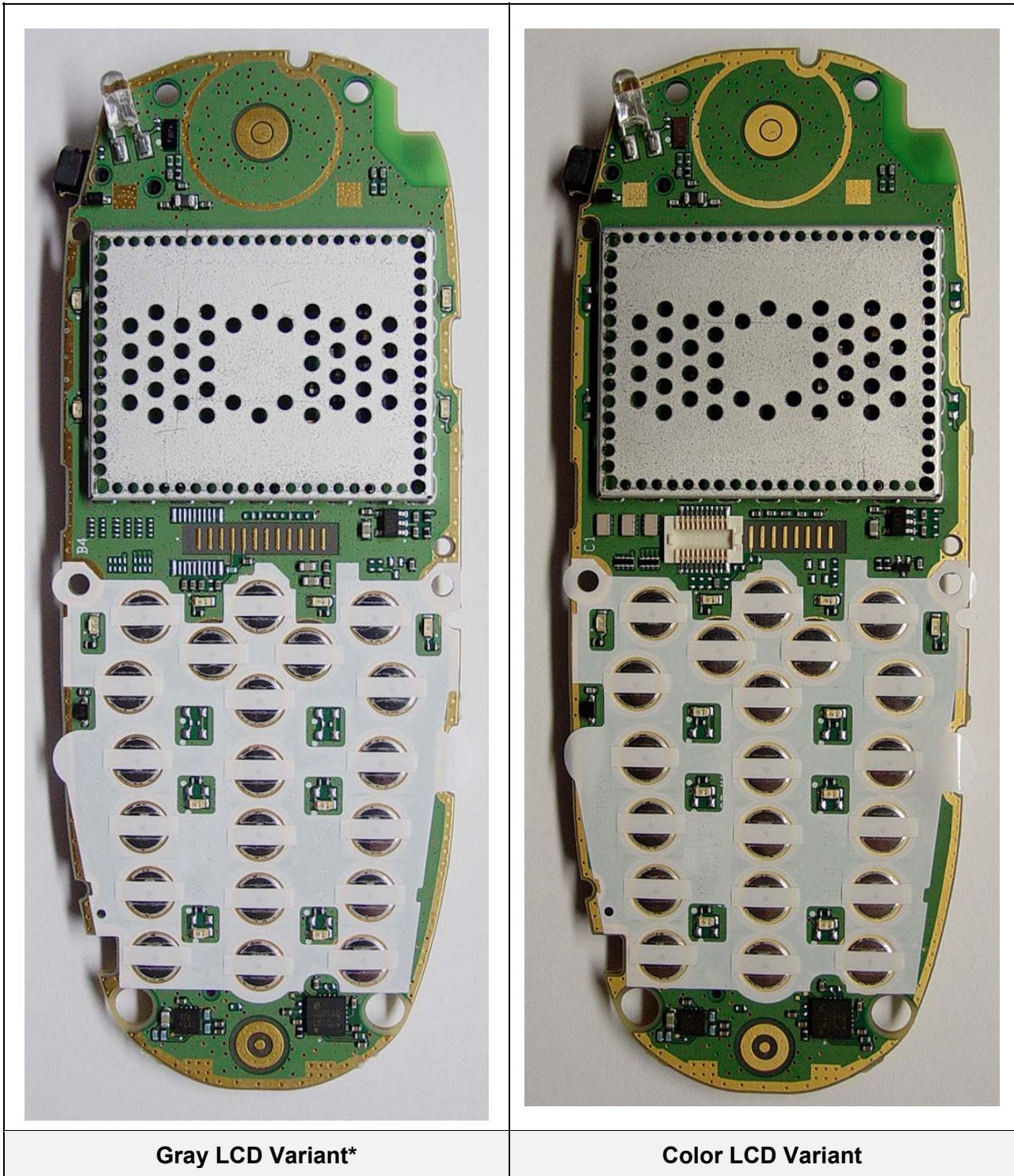


Keypad
K490 (Energi) Family

PCB Side 1 - K404A (Rave), K430 (Rave) Family, K480 (Aktiv) Family, and K490 (Energi) Family

	
<p>Gray LCD Variant*</p>	<p>Color LCD Variant</p>
<p><i>PCB Side 1</i></p>	
<p>K404A (Rave), K430 (Rave) Family, K480 (Aktiv) Family, and K490 (Energi) Family</p>	

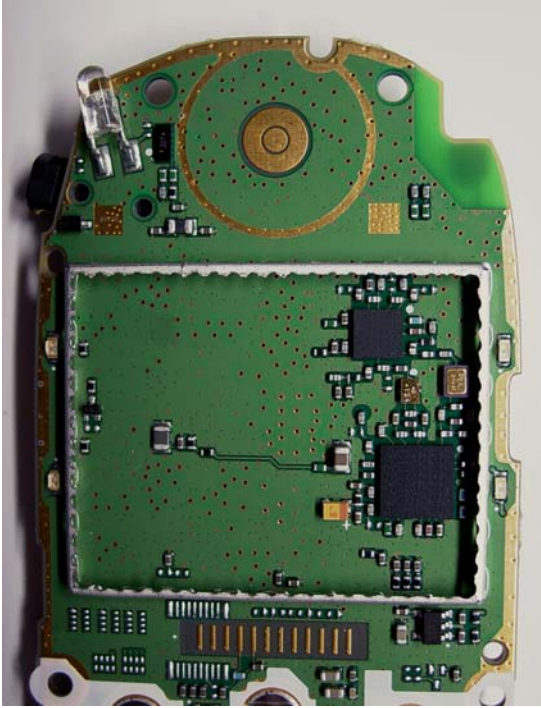
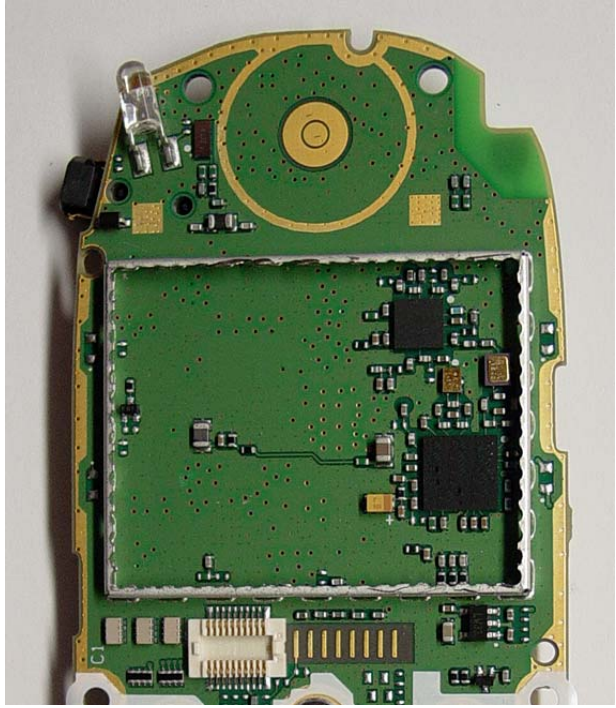
***Note: The Gray LCD Variant does not apply to the K490 Family of tri-mode products. The Tri-mode Dual-band K490 family of products only use the color LCD.**



PCB Side 1 (with Shield Cans)

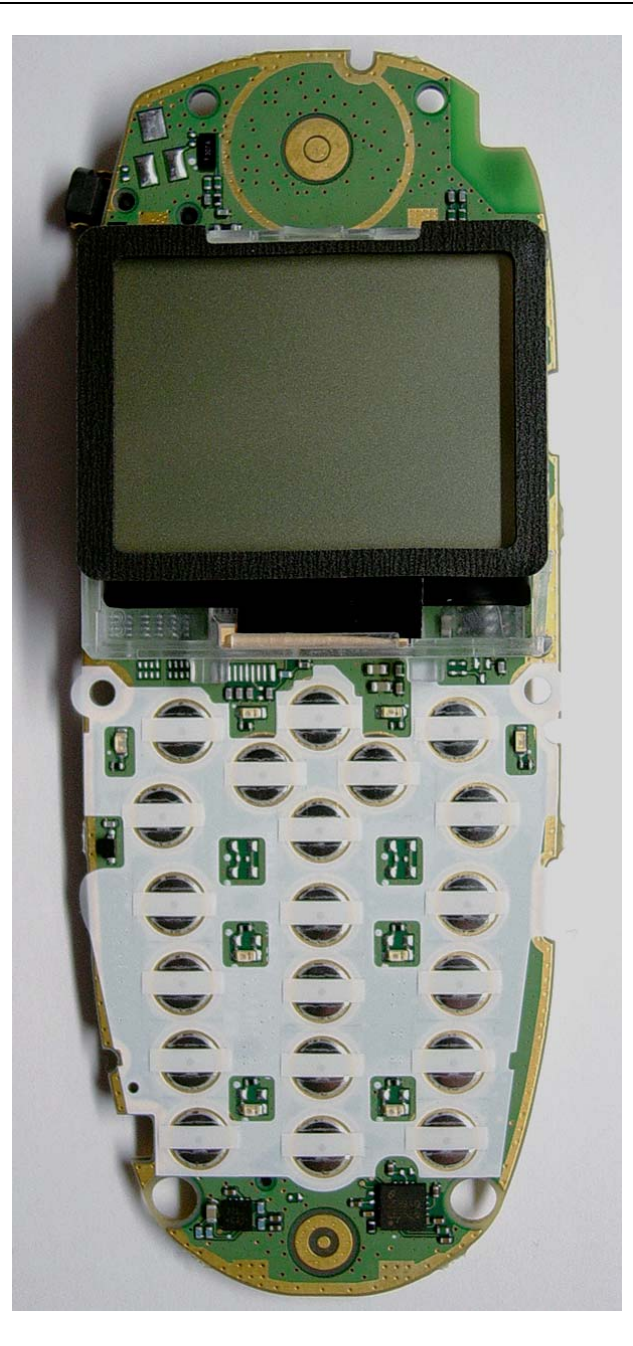

K404A (Rave), K430 (Rave) Family, K480 (Aktiv) Family, and K490 (Energi) Family

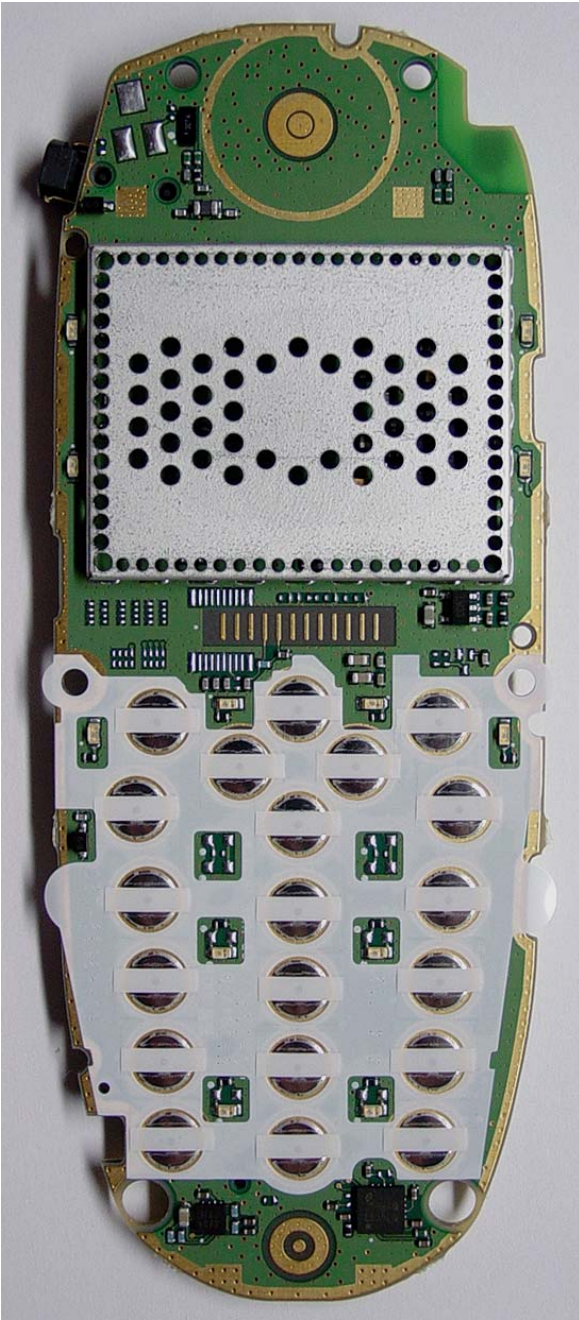
***Note: The Gray LCD Variant does not apply to the K490 Family of tri-mode products. The Tri-mode Dual-band K490 family of products only use the color LCD.**

	
<p>Gray LCD Variant*</p>	<p>Color LCD Variant</p>
<p><i>PCB Side 1 (Shield Cans Removed)</i></p>	
<p>K404A (Rave), K430 (Rave) Family, K480 (Aktiv) Family, and K490 (Energi) Family</p>	

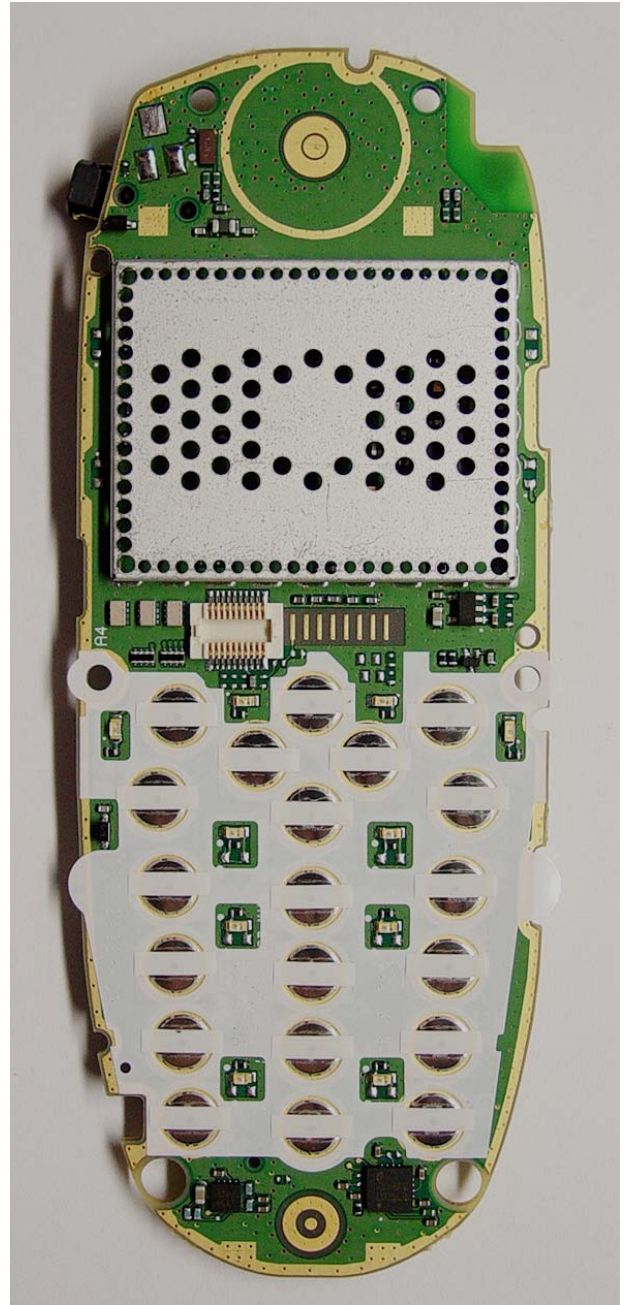
***Note: The Gray LCD Variant does not apply to the K490 Family of tri-mode products. The Tri-mode Dual-band K490 family of products only use the color LCD.**

PCB Side 1 - K450 (Phantom) Family

 A photograph of the back of a mobile phone showing the internal PCB. The PCB is green with gold-colored traces and components. A large, dark gray LCD panel is mounted on top. The bottom half of the PCB features a white plastic keypad insert with numerous circular cutouts for the keys. The phone's body is yellow.	
 A photograph of the back of a mobile phone showing the internal PCB, similar to the Gray LCD variant. The PCB is green with gold-colored traces and components. A large, dark LCD panel is mounted on top. The bottom half of the PCB features a white plastic keypad insert with numerous circular cutouts for the keys. The phone's body is yellow.	
<p>Gray LCD Variant</p>	<p>Color LCD Variant</p>
<p>PCB Side 1 K450 (Phantom) Family</p>	

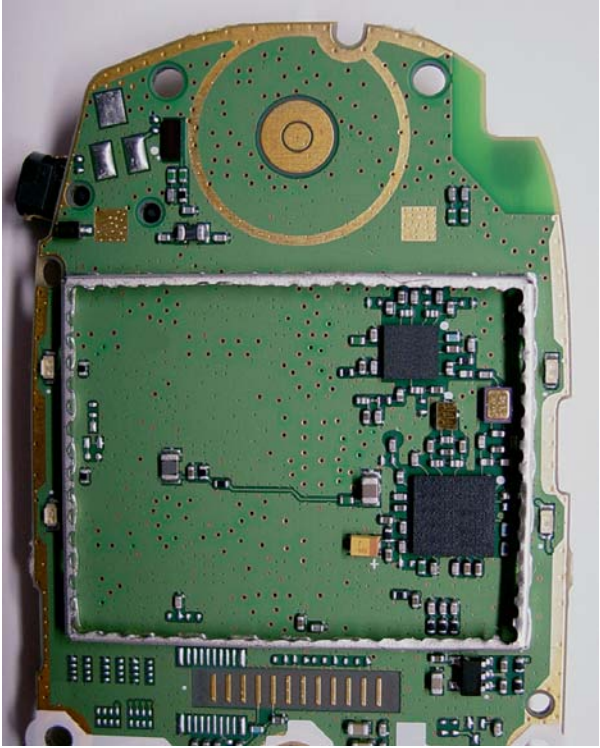
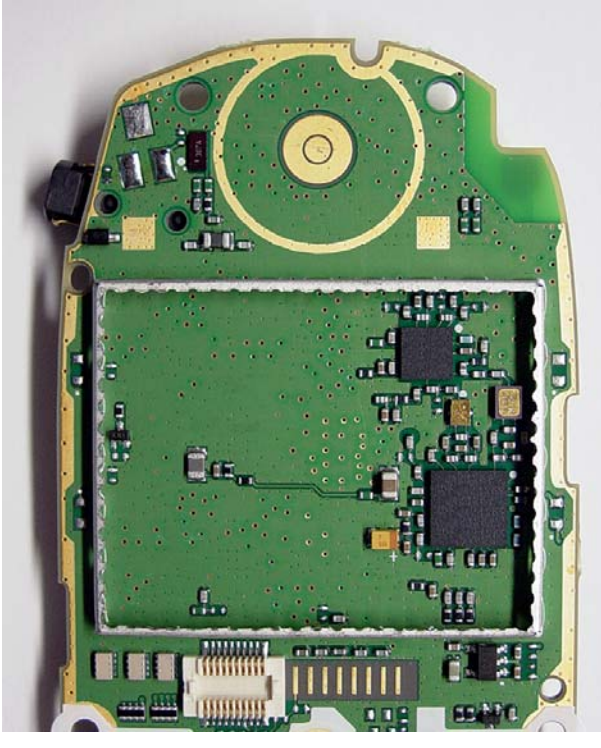


Gray LCD Variant

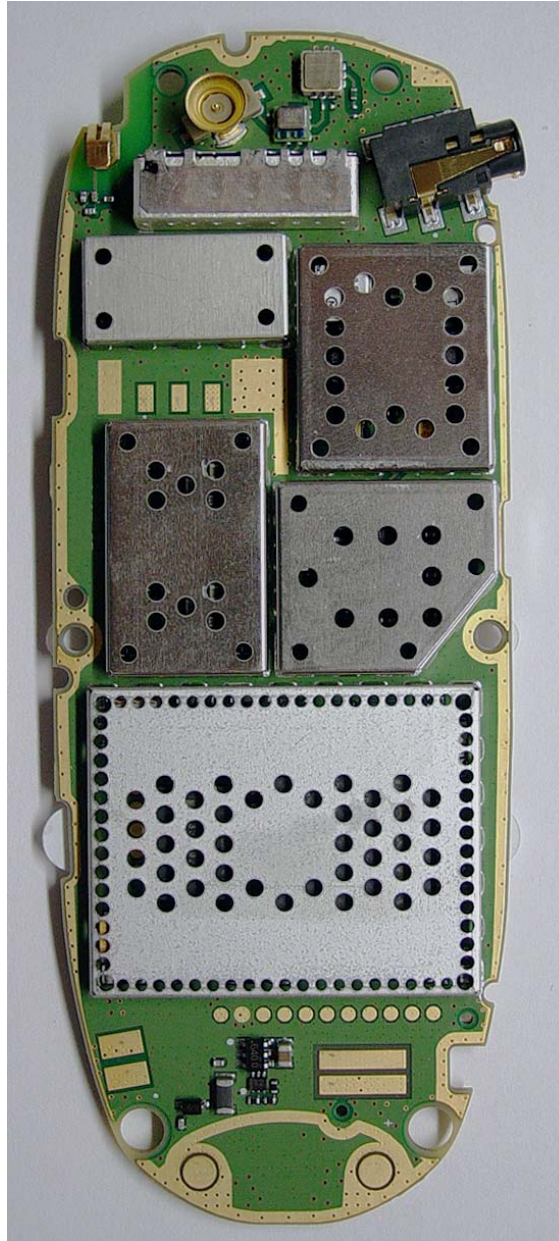


Color LCD Variant

***PCB Side 1 (with Shield Cans)
K450 (Phantom) Family***

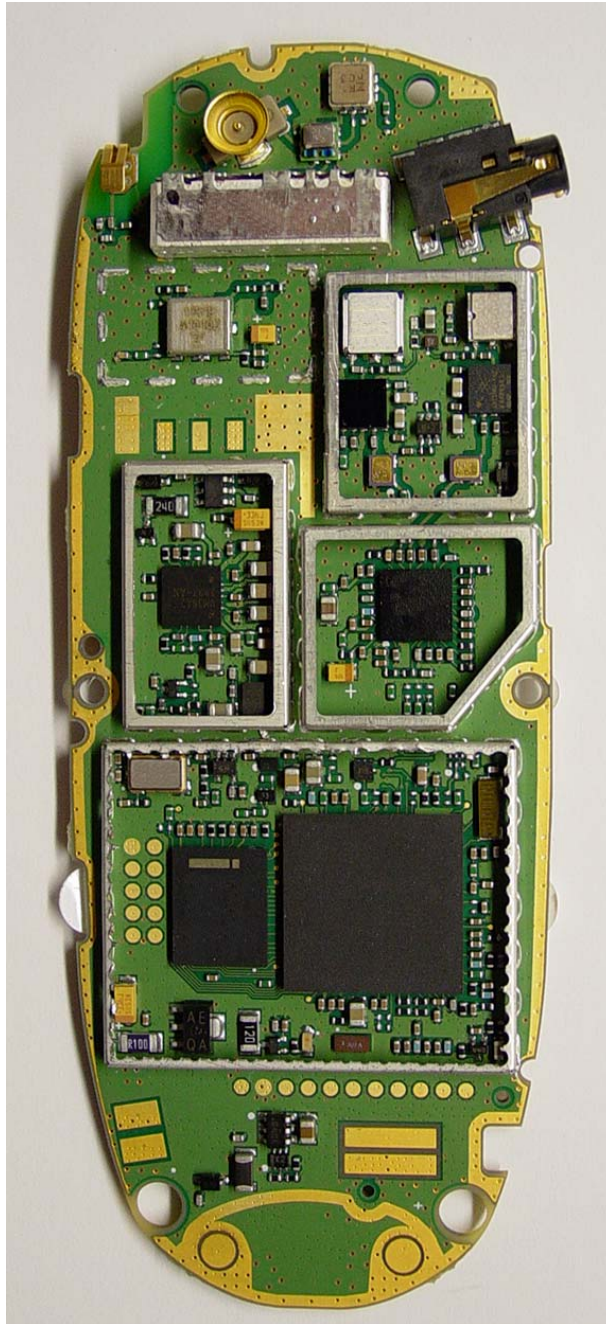
	
<p>Gray LCD Variant</p>	<p>Color LCD Variant</p>
<p><i>PCB Side 1 (Shield Cans Removed)</i> K450 (Phantom) Family</p>	

PCB Side 2 – K404A (Rave), K430 (Rave) Family, K450 (Phantom) Family, K480 (Aktiv) Family, and K490 (Energi) Family



PCB Side 2 is the same for all model variants

PCB Side 2 (with Shield Cans)
**K404A (Rave), K430 (Rave) Family, K450 (Phantom) Family,
K480 (Aktiv) Family, and K490 (Energi) Family**



PCB Side 2 is the same for all model variants

PCB Side 2 (with Shield Cans removed)
K404A (Rave), K430 (Rave) Family, K450 (Phantom) Family,
K480 (Aktiv) Family, and K490 (Energi) Family