

Test Laboratory: Kyocera Wireless Corp.

K38-01 #3260 CDMA-1900 Ch600, Left Cheek

Communication System: CDMA-1900, Frequency: 1880 MHz, Duty Cycle: 1:1

Medium: HSL1800,Medium parameters used: $f = 1880$ MHz; $\sigma = 1.4$ mho/m; $\epsilon_r = 41.2$; $\rho = 1000$ kg/m³

Phantom: SAM 12,Phantom section: Left Section

DASY4 Configuration:

Probe: ET3DV6 - SN1618, ConvF(5.31, 5.31, 5.31), Calibrated: 9/19/2007

Sensor-Surface: 4mm (Mechanical Surface Detection),

Electronics: DAE4 Sn527,Calibrated: 9/14/2007

Measurement SW: DASY4, V4.7 Build 71

Postprocessing SW: SEMCAD, V1.8 Build 176

Temperature:

Room T = 21.8 +/- 1 deg C, Liquid T = 22.0 +/- 1 deg C

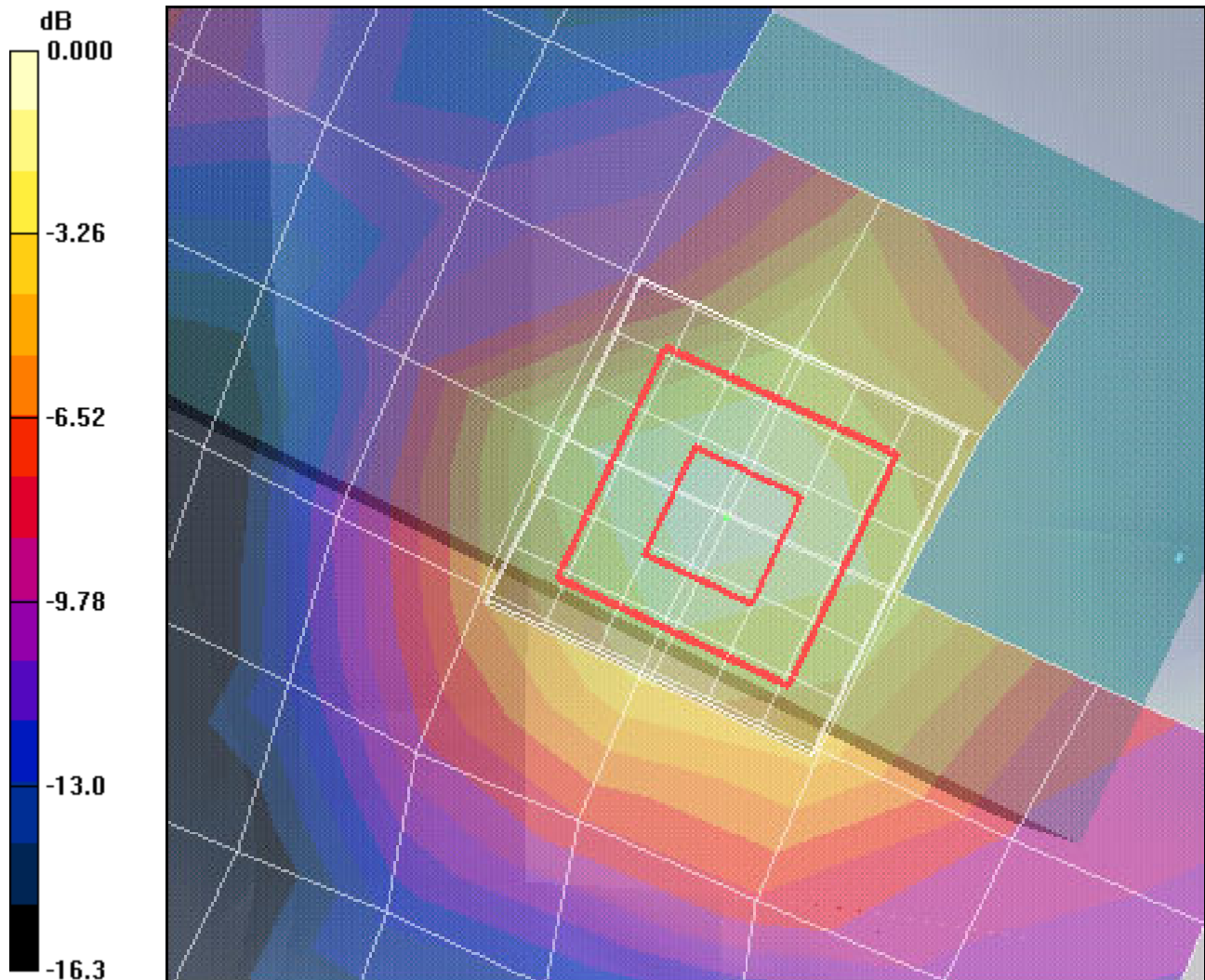
CDMA-1900 Ch600 LC/Zoom Scan (7x7x7)/Cube 0: Measurement grid: dx=5mm, dy=5mm, dz=5mm

Reference Value = 12.5 V/m; Power Drift = -0.064 dB

Peak SAR (extrapolated) = 2.08 W/kg

SAR(1 g) = 1.42 mW/g; SAR(10 g) = 0.834 mW/g

Maximum value of SAR (measured) = 1.56 mW/g



0 dB = 1.56mW/g