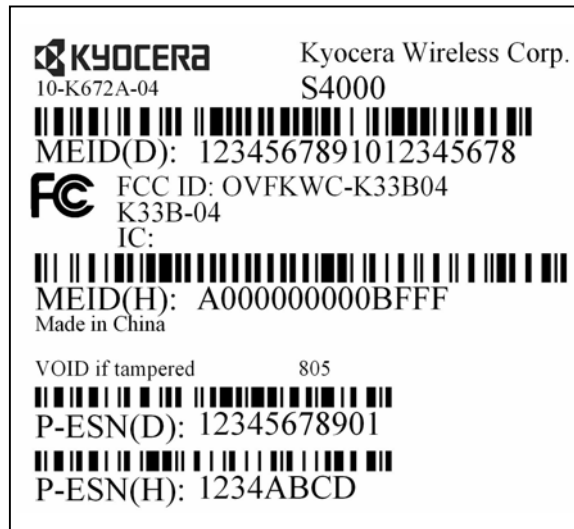


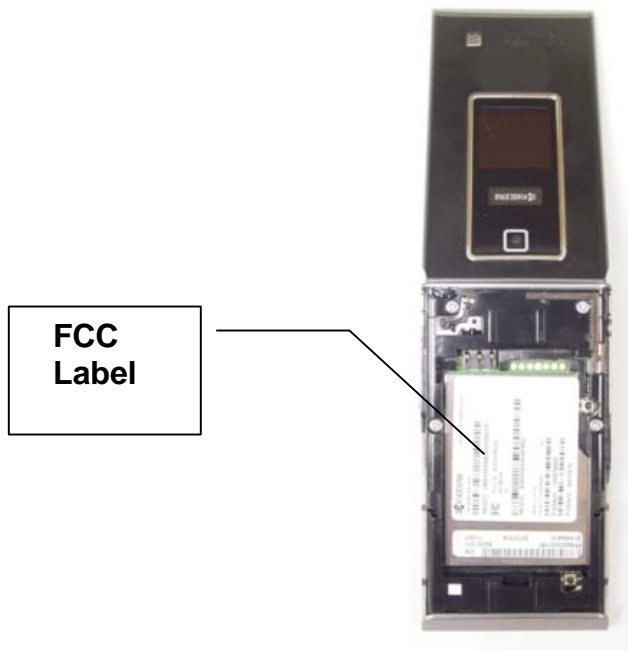
Exhibit 6: OVFKWC-K33B04

ID Label

Format



Location



FCC declaration statement

Kyocera Wireless Corp. complies with FCC rules Part 2.925(d) that the label shall be permanently affixed to the equipment and shall be readily visible to the purchaser at the time of purchase:

- 1) This cellular phone has limited label space on the exterior of the unit. The FCC ID label is placed in the battery compartment.
- 2) The batteries for these devices are designed for easy removal and that the labels will be visible whenever the batteries are removed for charging or replacement.

The phone will be market without the battery installed.