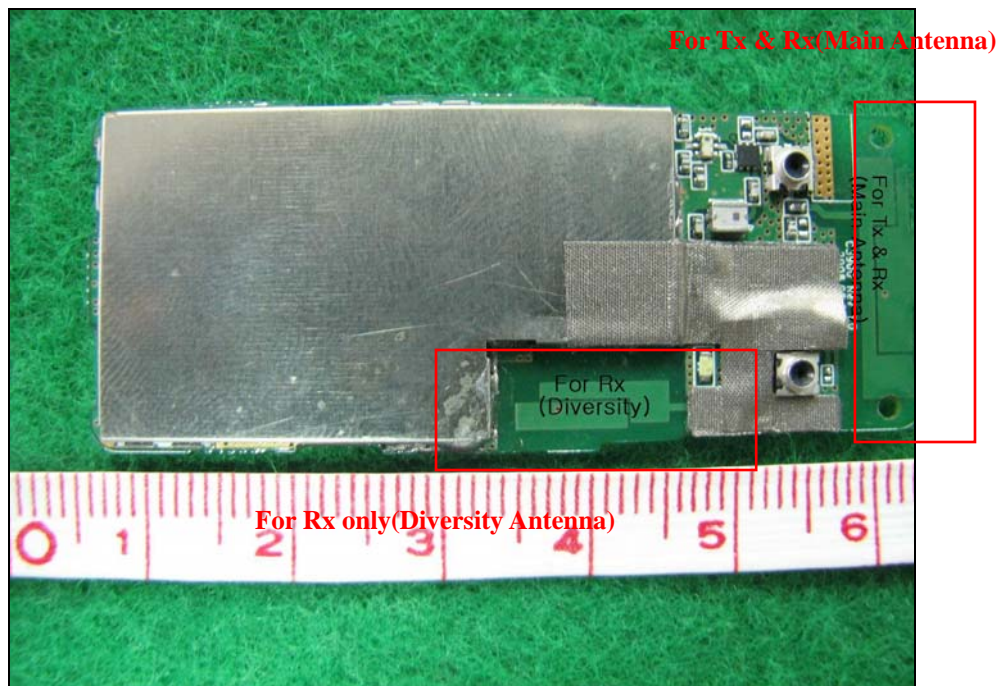


5. Description of Test Modes and Configurations

5.1 Description of Antenna Location



5.2 Description of Test Position

The following test configurations have been applied in this report.



Horizontal Top : The front of EUT face to the Phantom with 5mm separation distance.



Horizontal Bottom : The bottom of EUT face to the Phantom with 5mm separation distance.



Vertical Right : The right edge of EUT face to the Phantom with 5mm separation distance.



Vertical Left : The right edge of EUT face to the Phantom with 5mm separation distance.



Vertical Top : The front Top side of EUT face to the Phantom with 5mm separation distance.



Laptop(Horizontal) : The front of EUT face to the Phantom with 5mm separation distance.



Laptop(Vertical) : The right edge of EUT face to the Phantom with 7mm separation distance.

5.3 Description of Test Mode

Communication	Modulation Type	Test Position	Test Channel
Wi-max (10MHz Bandwidth)	QPSK	Horizontal Top	L,M,H
	QPSK	Horizontal Bottom	L,M,H
	QPSK	Vertical Right	L,M,H
	QPSK	Vertical Left	L,M,H
	QPSK	Vertical Top	L,M,H
	16QAM	Horizontal Top	L,M,H
	QPSK	Laptop(Horizontal)	L,M,H
	QPSK	Laptop(Vertical)	L,M,H



Appendix E : Photographs of EUT

Front View of EUT



Rear View of EUT



Top View of EUT



Bottom View of EUT



Side View of EUT



Side View of EUT

