

*Exhibit 24 continue 3 --*

**Spurious Up to 10<sup>th</sup> Harmonics**

(a) RC3 R\_FCH + Ptxmax

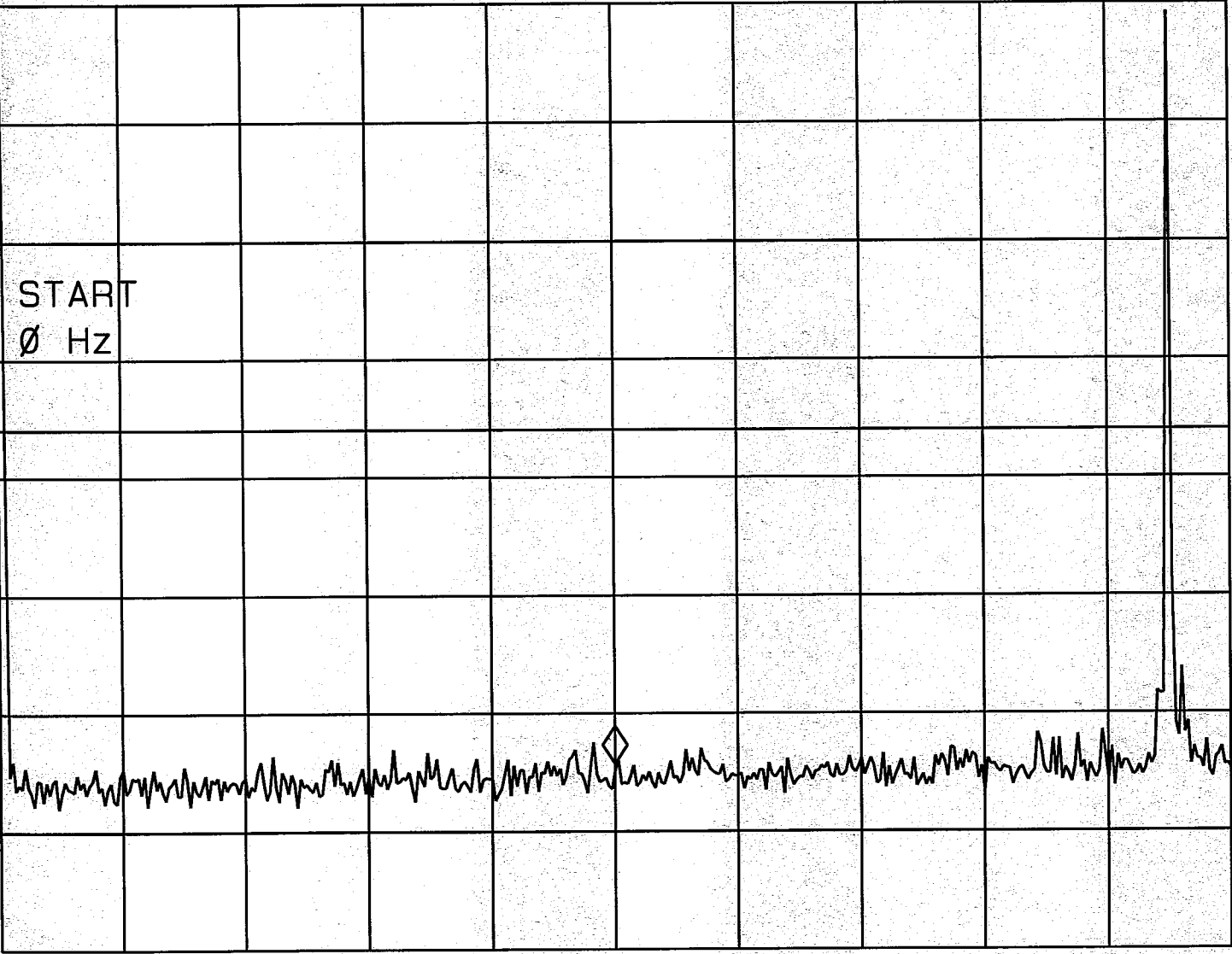
PCS CH 25  
0 TO 1.95GHz  
R-FCH/RC3

11:30:10 JUL 20, 2001  
HP

MKR 975 MHz  
-41.28 dBm

REF 23.0 dBm AT 20 dB

PEAK  
LOG  
10  
dB/  
OFFST  
20.0  
dB  
DL  
-13.0  
dBm



CENTER  
FREQ

START  
FREQ

STOP  
FREQ

CF STEP  
AUTO MAN

SWEEP  
LOG LIN

More  
1 of 2

START 0 Hz

#RES BW 1.0 MHz

#VBW 1 MHz

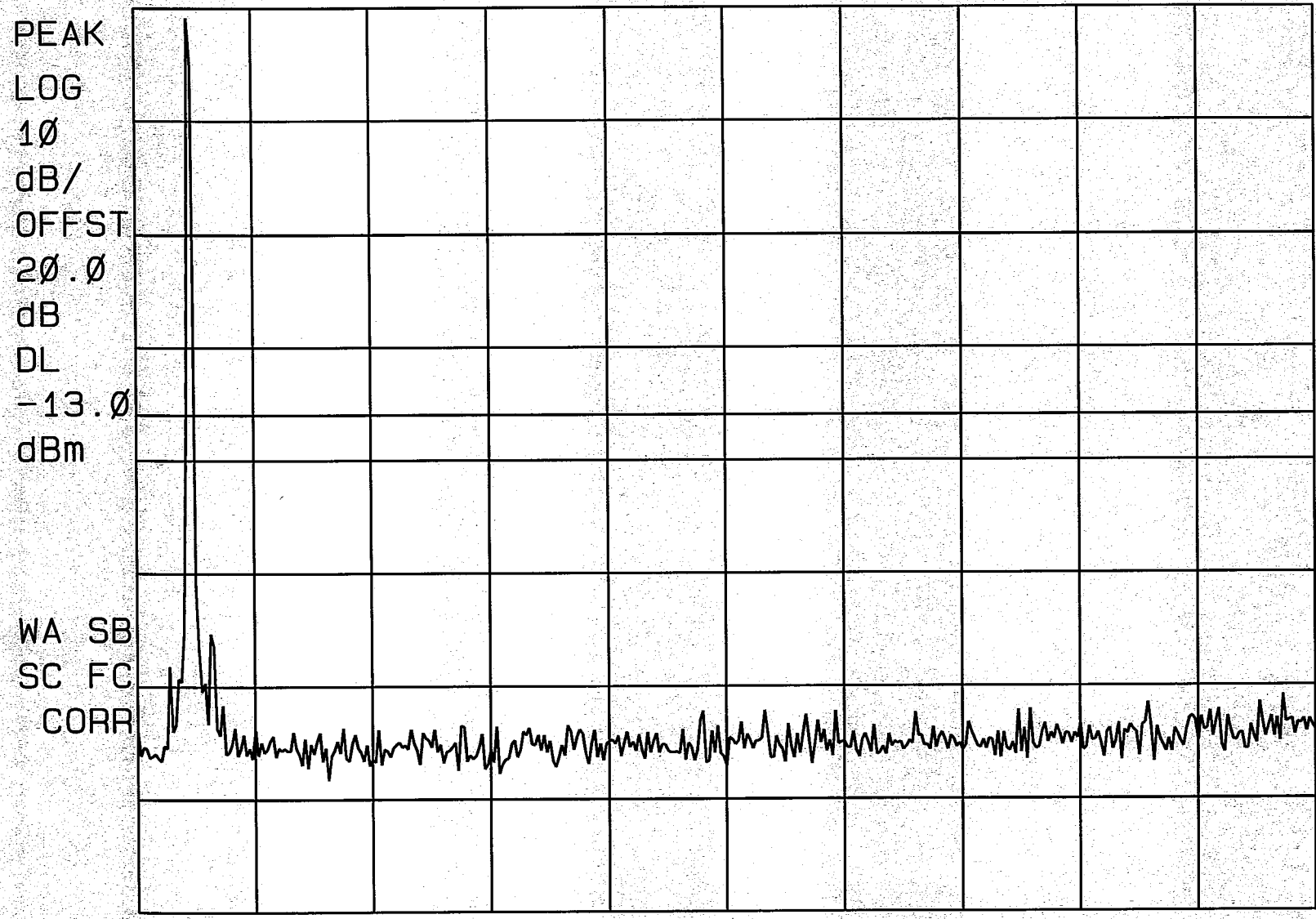
STOP 1.950 GHz

SWP 39.0 msec

PCS ch 25  
1.8GHz to 2.9GHz  
R-FCH/PC3

HP  
11:32:52 JUL 20, 2001

REF 23.0 dBm AT 20 dB



MARKER  
NORMAL

MARKER  
△

MARKER  
AMPTD

SELECT  
1 2 3 4

MARKER 1  
ON OFF

More  
1 of 3

START 1.800 GHz

STOP 2.900 GHz

#RES BW 1.0 MHz

#VBW 1 MHz

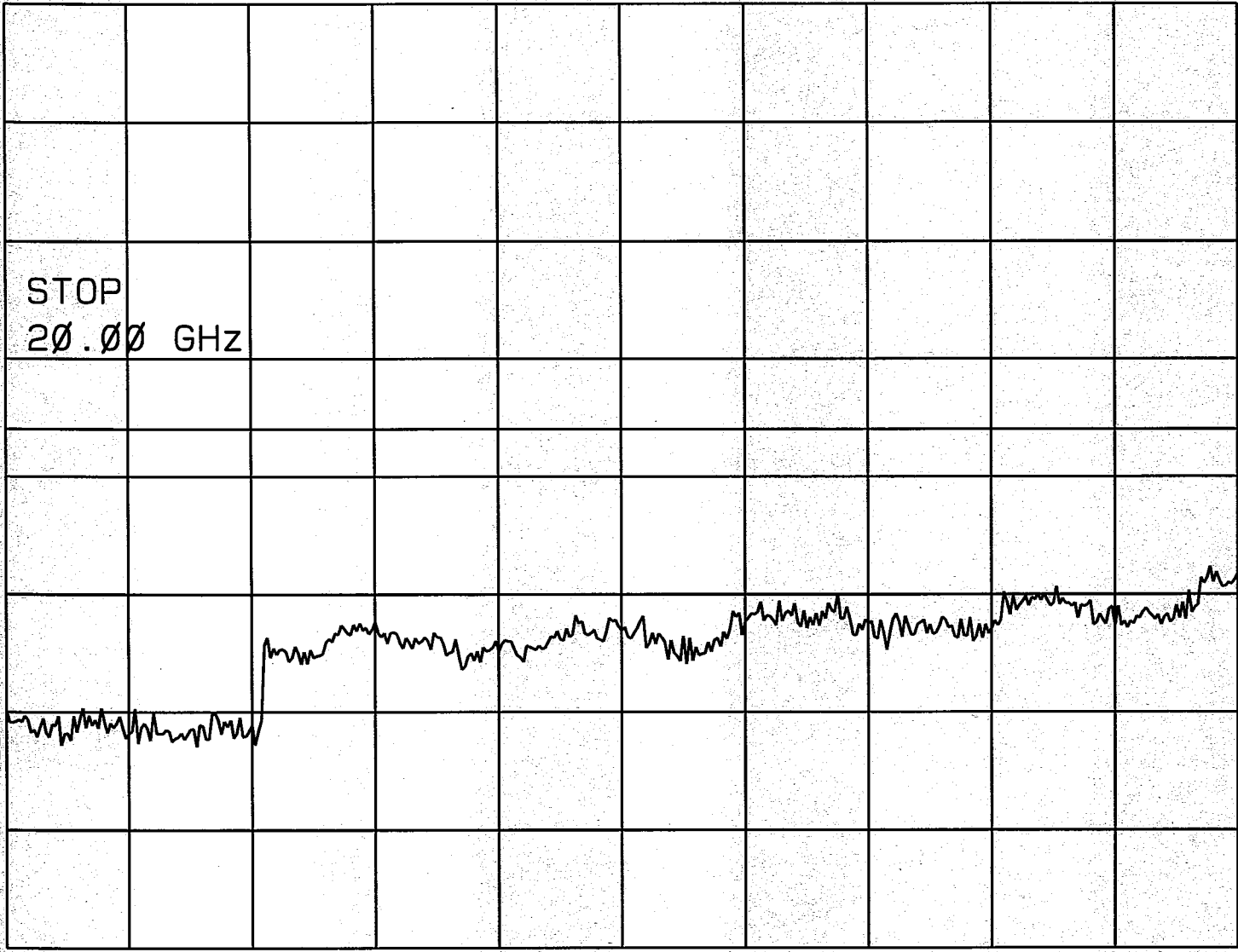
SWP 22.0 msec

PCS CH 25  
2.9 GHz TO 20 GHz  
R-FCH/203

HP  
11:33:51 JUL 20, 2001

REF 23.0 dBm AT 20 dB

PEAK  
LOG  
10  
dB/  
OFFST  
20.0  
dB  
DL  
-13.0  
dBm



CENTER  
FREQ

START  
FREQ

STOP  
FREQ

CF STEP  
AUTO MAN

SWEEP  
LOG LIN

More  
1 of 2

START 2.90 GHz

#RES BW 1.0 MHz

#VBW 1 MHz

STOP 20.00 GHz

SWP 351 msec

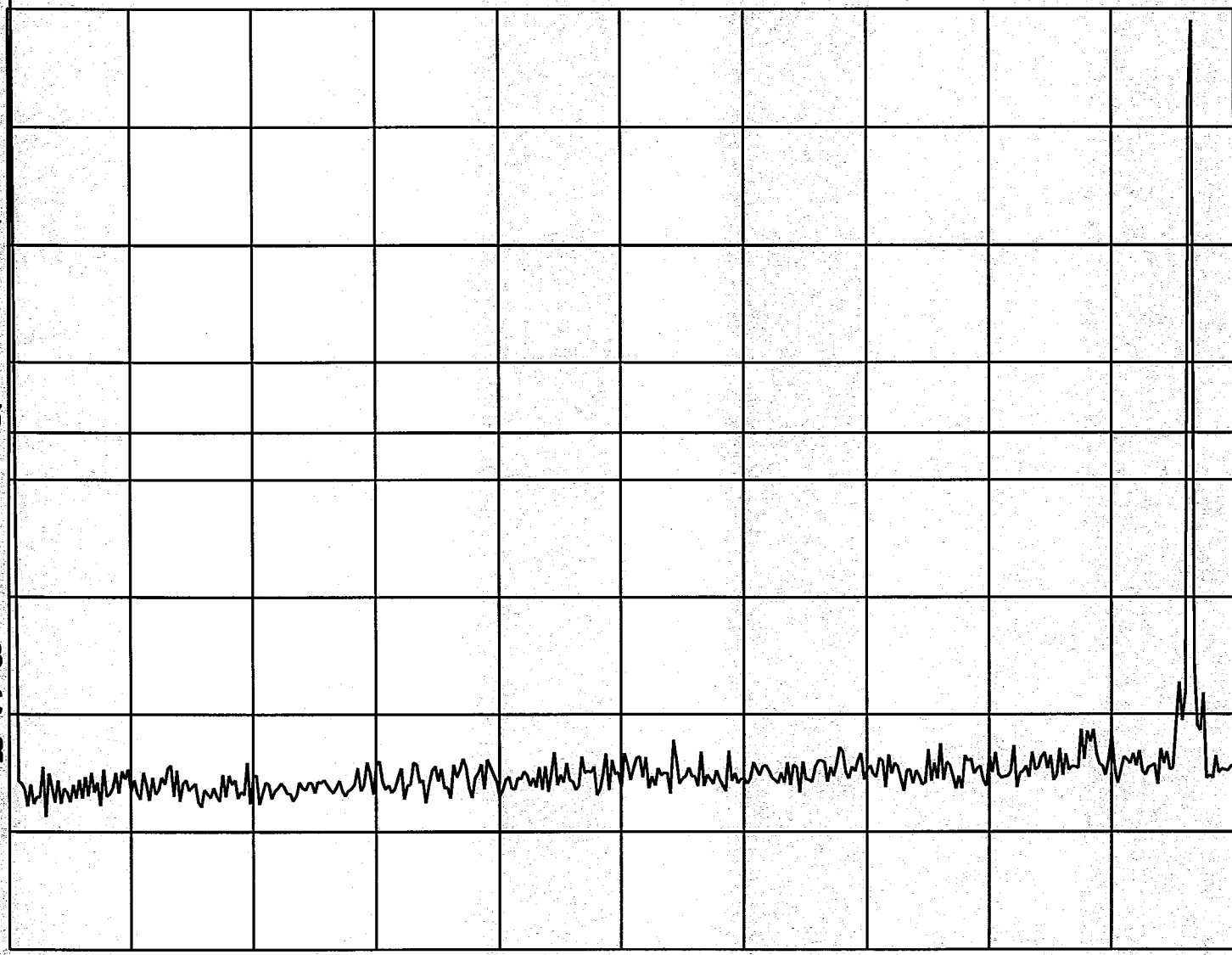
PCS CH 600  
0 TO 1.95GHz  
EC3 / E-FCH

11:36:42 JUL 20, 2001

REF 23.0 dBm AT 20 dB

PEAK  
LOG  
10  
dB/  
OFFST  
20.0  
dB  
DL  
-13.0  
dBm

WA SB  
SC FC  
CORR



MARKER  
NORMAL

MARKER  
△

MARKER  
AMPTD

SELECT  
1 2 3 4

MARKER 1  
ON OFF

More  
1 of 3

11:37:51 JUL 20, 2001  
HP

PCS CH 600  
1.8GHz TO 2.9GHz  
PCS / R-FCH

REF 23.0 dBm AT 20 dB

PEAK  
LOG  
10  
dB/  
OFFST  
20.0  
dB  
DL  
-13.0  
dBm

MARKER  
NORMAL

MARKER  
△

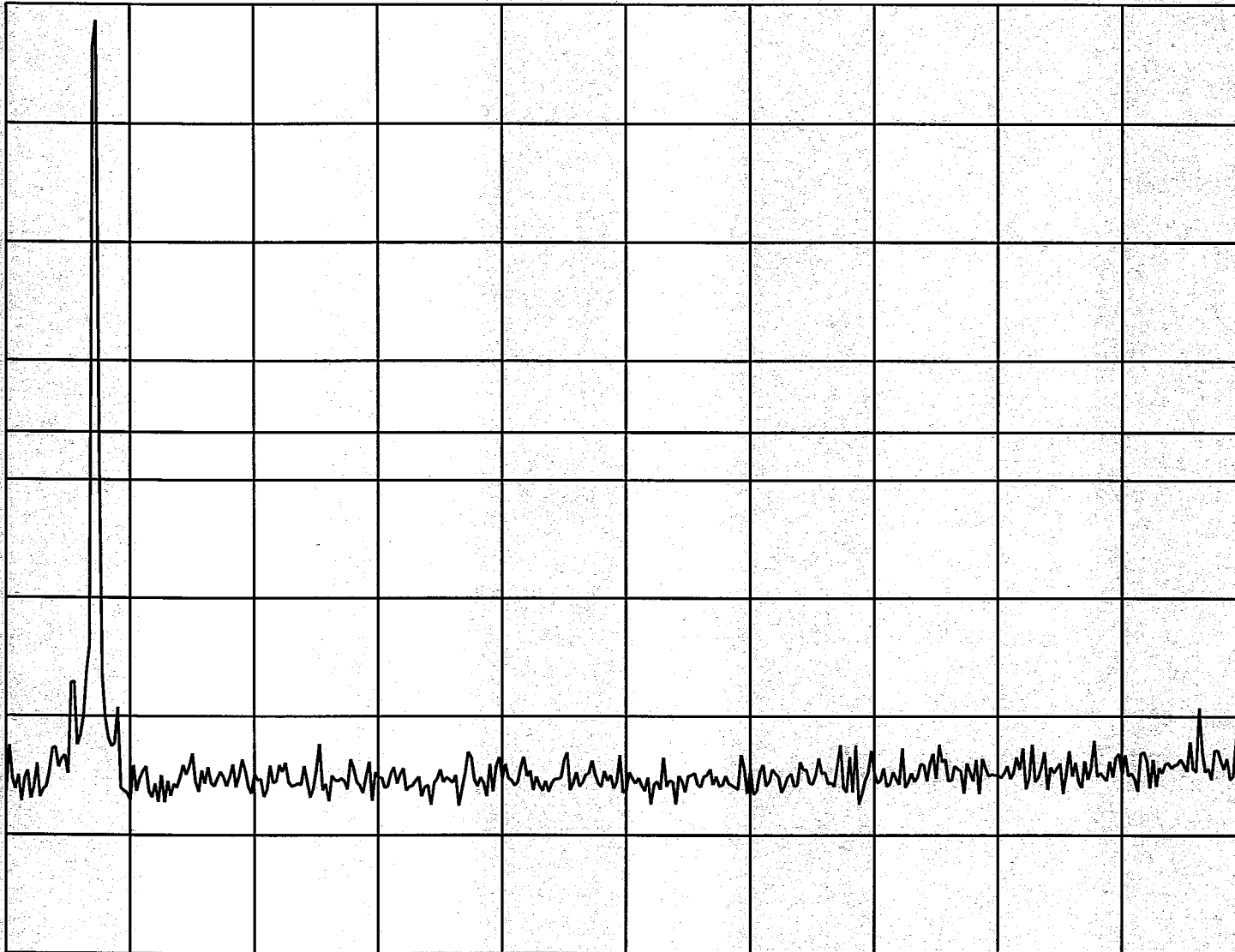
MARKER  
AMPTD

SELECT  
1 2 3 4

WA SB  
SC FC  
CORR

MARKER 1  
ON OFF

More  
1 of 3



START 1.800 GHz

STOP 2.900 GHz

#RES BW 1.0 MHz

#VBW 1 MHz

SWP 22.0 msec

11:38:34 JUL 20, 2001  
HP

PCS CH 600  
2.90GHz TO 2.0GHz  
203 / 2-FCIT

REF 23.0 dBm AT 20 dB

PEAK  
LOG  
10  
dB/  
OFFST  
20.0  
dB  
DL  
-13.0  
dBm

MARKER  
NORMAL

MARKER  
△

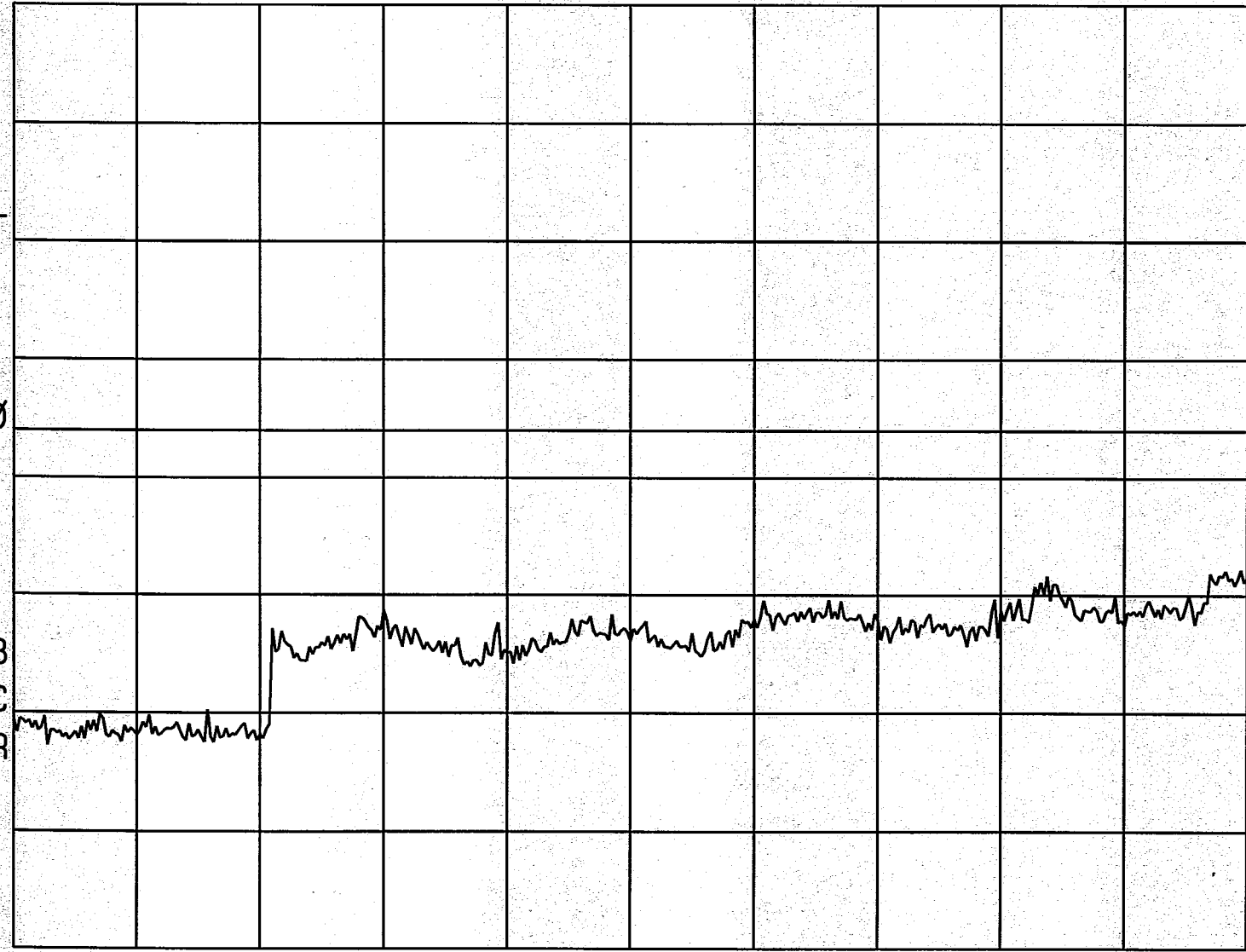
MARKER  
AMPTD

SELECT  
1 2 3 4

WA SB  
SC FC  
CORR

MARKER 1  
ON OFF

More  
1 of 3



START 2.90 GHz

STOP 2.00 GHz

#RES BW 1.0 MHz

#VBW 1 MHz

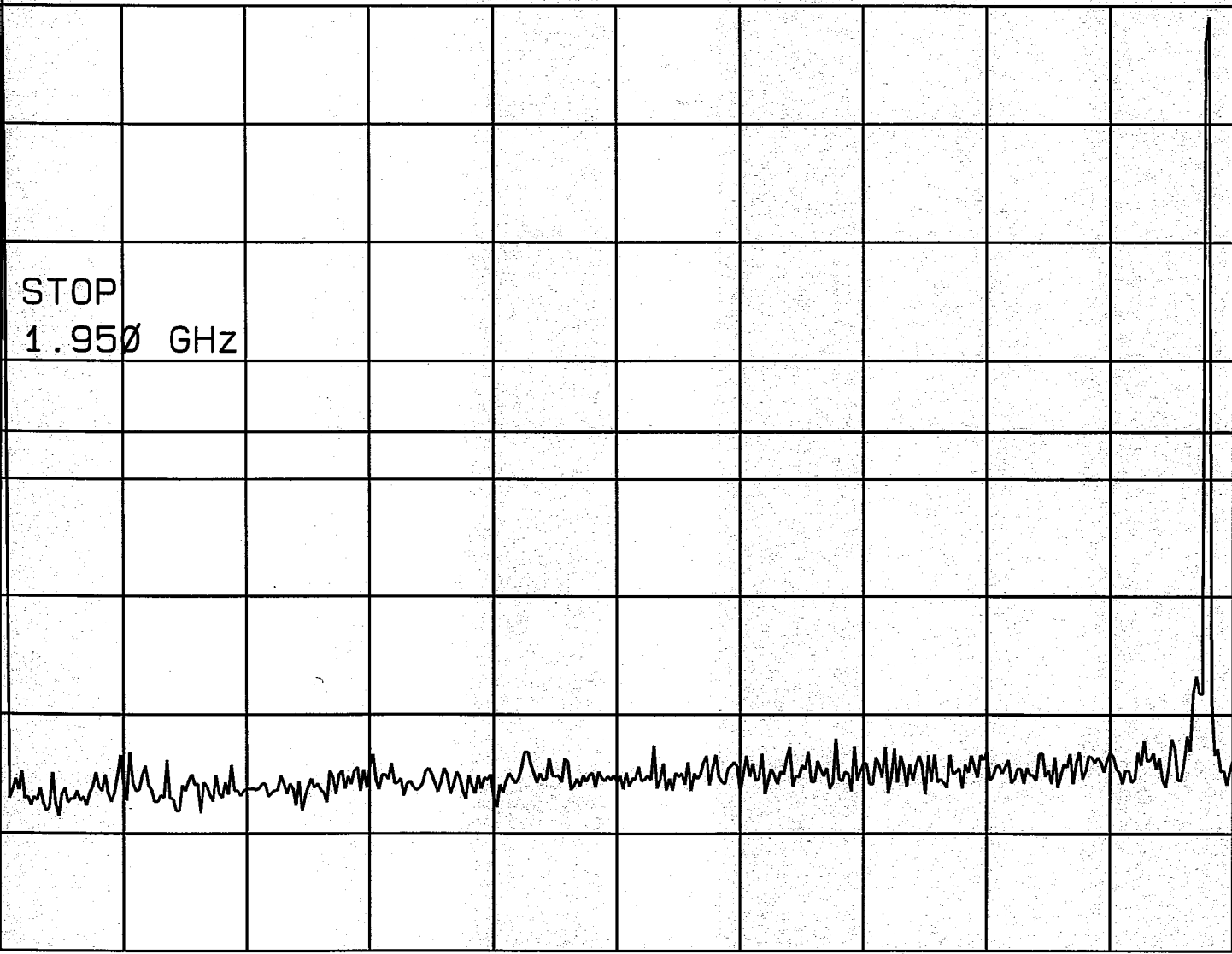
SWP 351 msec

PCS CH 1175  
0Hz TO 1.95GHz  
203/R-FCH

11:45:37 JUL 20, 2001  
HP

REF 23.0 dBm AT 20 dB

PEAK  
LOG  
10  
dB/  
OFFST  
20.0  
dB  
DL  
-13.0  
dBm



CENTER  
FREQ

START  
FREQ

STOP  
FREQ

CF STEP  
AUTO MAN

SWEEP  
LOG LIN

More  
1 of 2

START 0 Hz

#RES BW 1.0 MHz

#VBW 1 MHz

STOP 1.950 GHz

SWP 39.0 msec



PCS CH 1175  
1.8GHz TO 2.9GHz  
DC3/E-FA

11:47:00 JUL 20, 2001  
hp

REF 23.0 dBm AT 20 dB

PEAK  
LOG  
10  
dB/  
OFFST  
20.0  
dB  
DL  
-13.0  
dBm

MARKER  
NORMAL

MARKER  
△

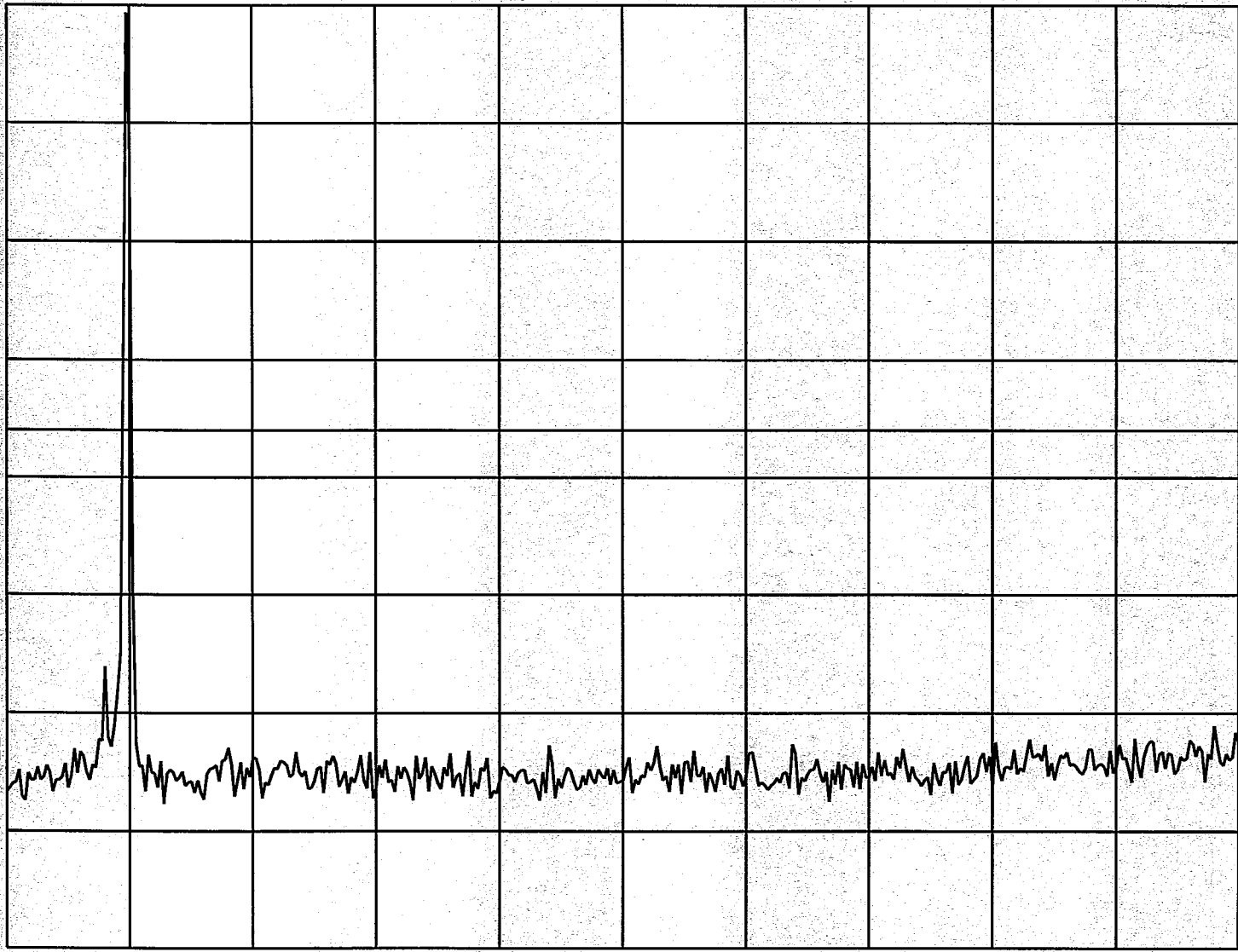
MARKER  
AMPTD

SELECT  
1 2 3 4

WA SB  
SC FC  
CORR

MARKER 1  
ON OFF

More  
1 of 3



START 1.800 GHz

STOP 2.900 GHz

#RES BW 1.0 MHz

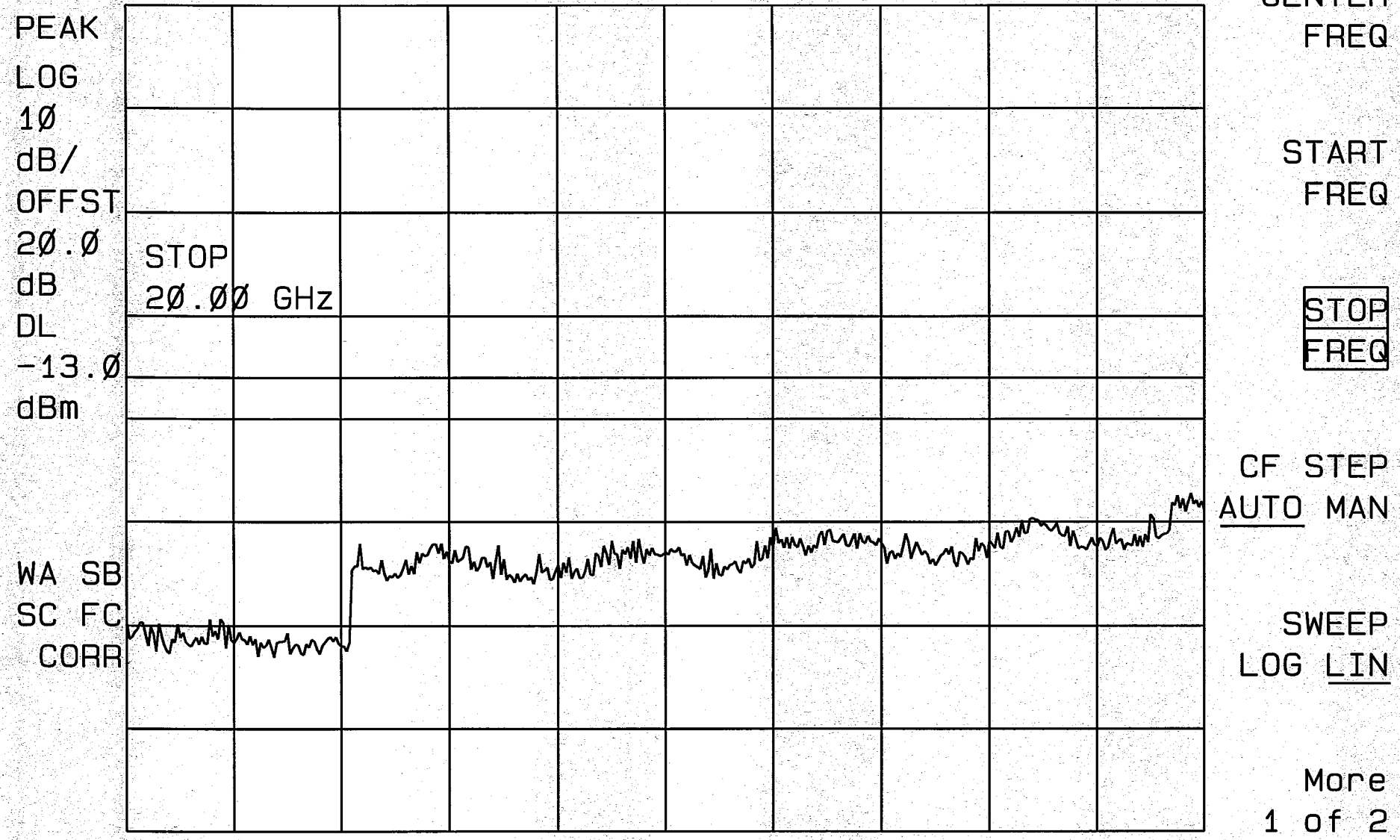
#VBW 1 MHz

SWP 22.0 msec

PCS CH 1175  
2.90GHz TO 2.0GHz  
PC3/R-FCH

11:50:12 JUL 20, 2001  
HP

REF 23.0 dBm AT 20 dB



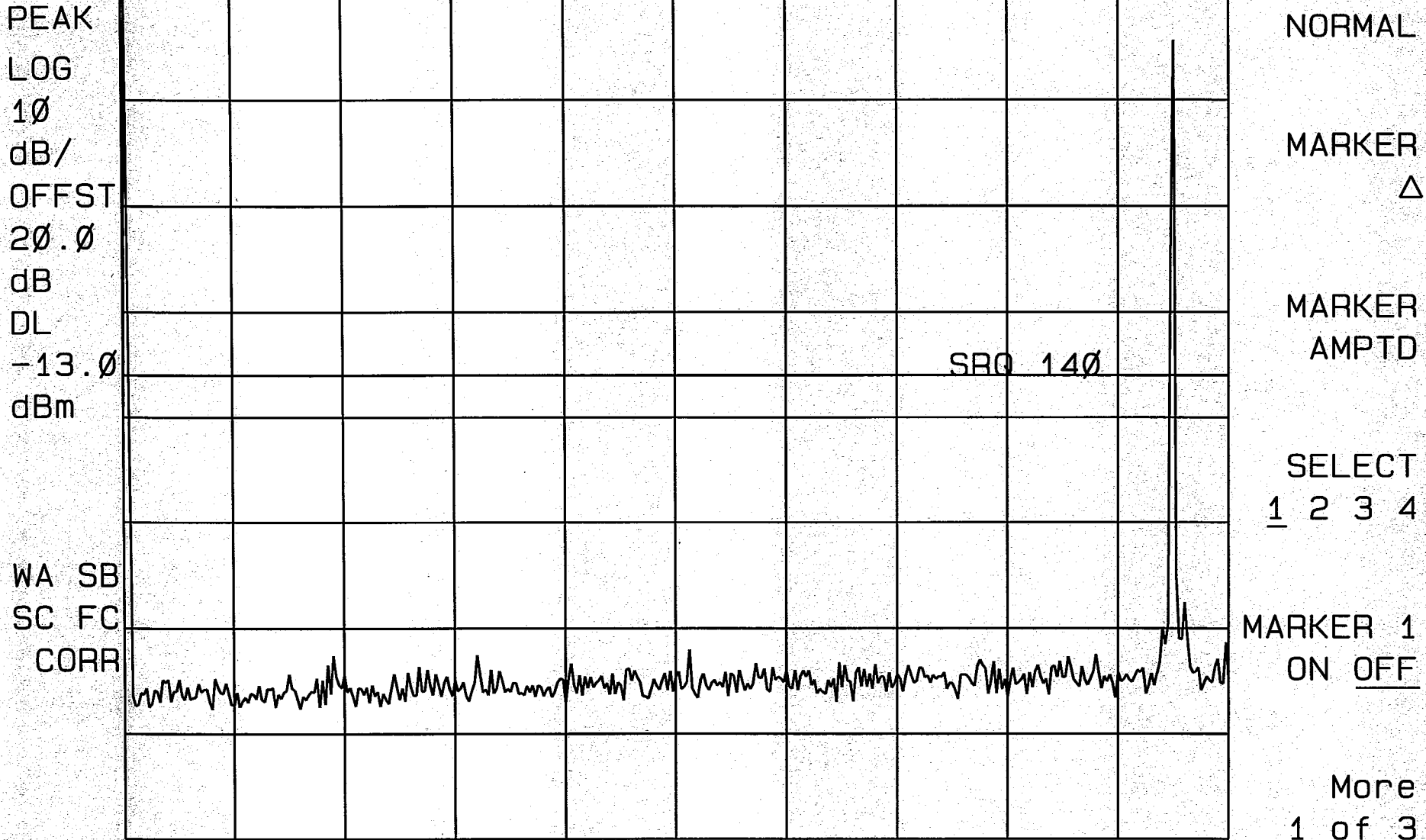
START 2.90 GHz STOP 20.00 GHz  
#RES BW 1.0 MHz #VBW 1 MHz SWP 351 msec  
More  
1 of 2

(b) RC3 R\_FCH+R\_SCH+PTxmax

16:12:29 JUL 20, 2001

REF 23.0 dBm AT 20 dB

CH 25 PCS  
SPECTRAL PLOT  
0 Hz TO 1.956 GHz  
PC3 / R-FCH+R-SCH



START 0 Hz

#RES BW 1.0 MHz

#VBW 1 MHz

STOP 1.950 GHz

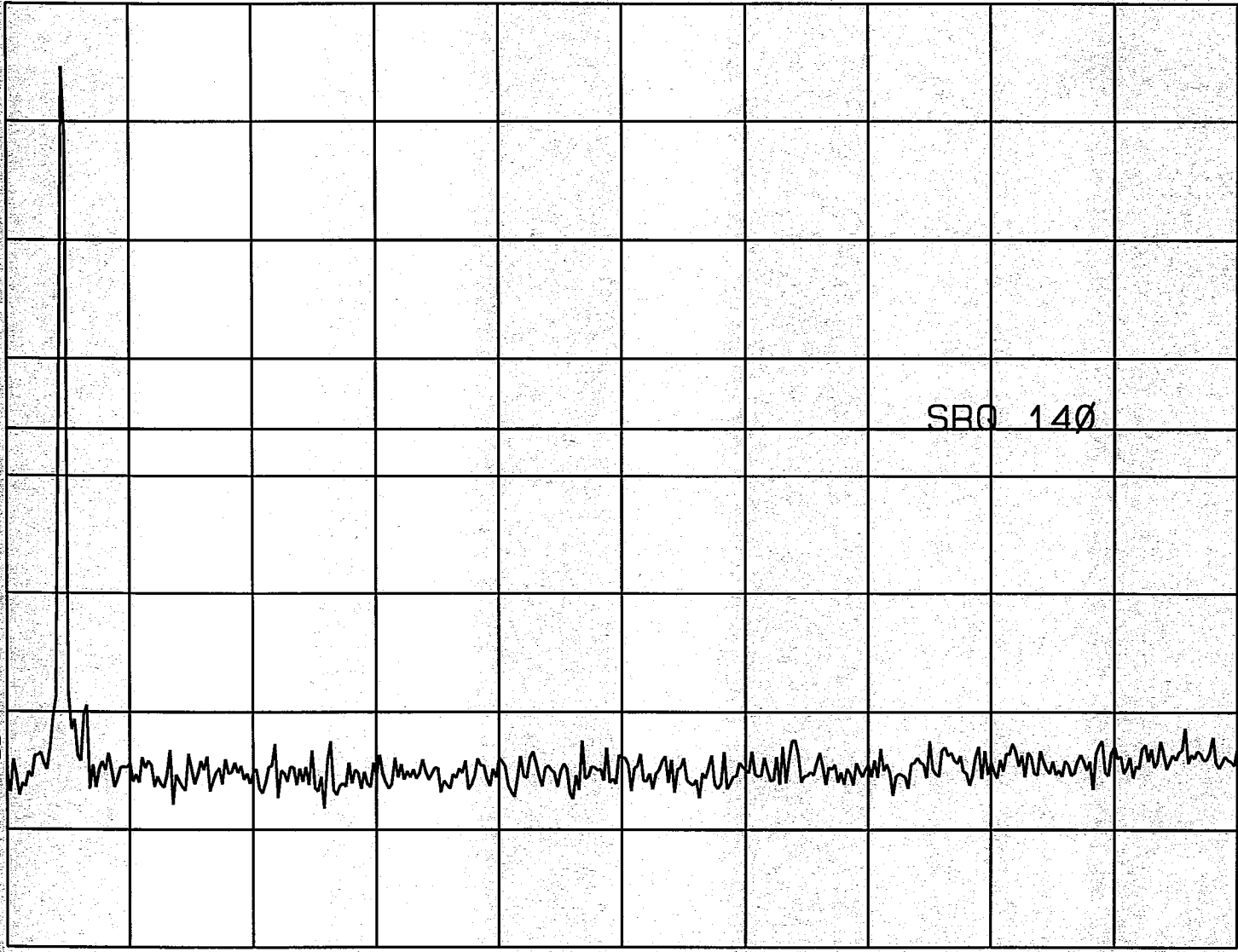
SWP 39.0 msec

16:13:06 JUL 20, 2001

CA 25 PCS  
SPECTRAL PLOT  
1.80GHz TO 2.90GHz  
DC3/R-FCH+R-SC17

REF 23.0 dBm AT 20 dB

PEAK  
LOG  
10  
dB/  
OFFST  
20.0  
dB  
DL  
-13.0  
dBm



MARKER  
NORMAL

MARKER  
△

MARKER  
AMPTD

SELECT  
1 2 3 4

MARKER 1  
ON OFF

More  
1 of 3

START 1.800 GHz

STOP 2.900 GHz

#RES BW 1.0 MHz

#VBW 1 MHz

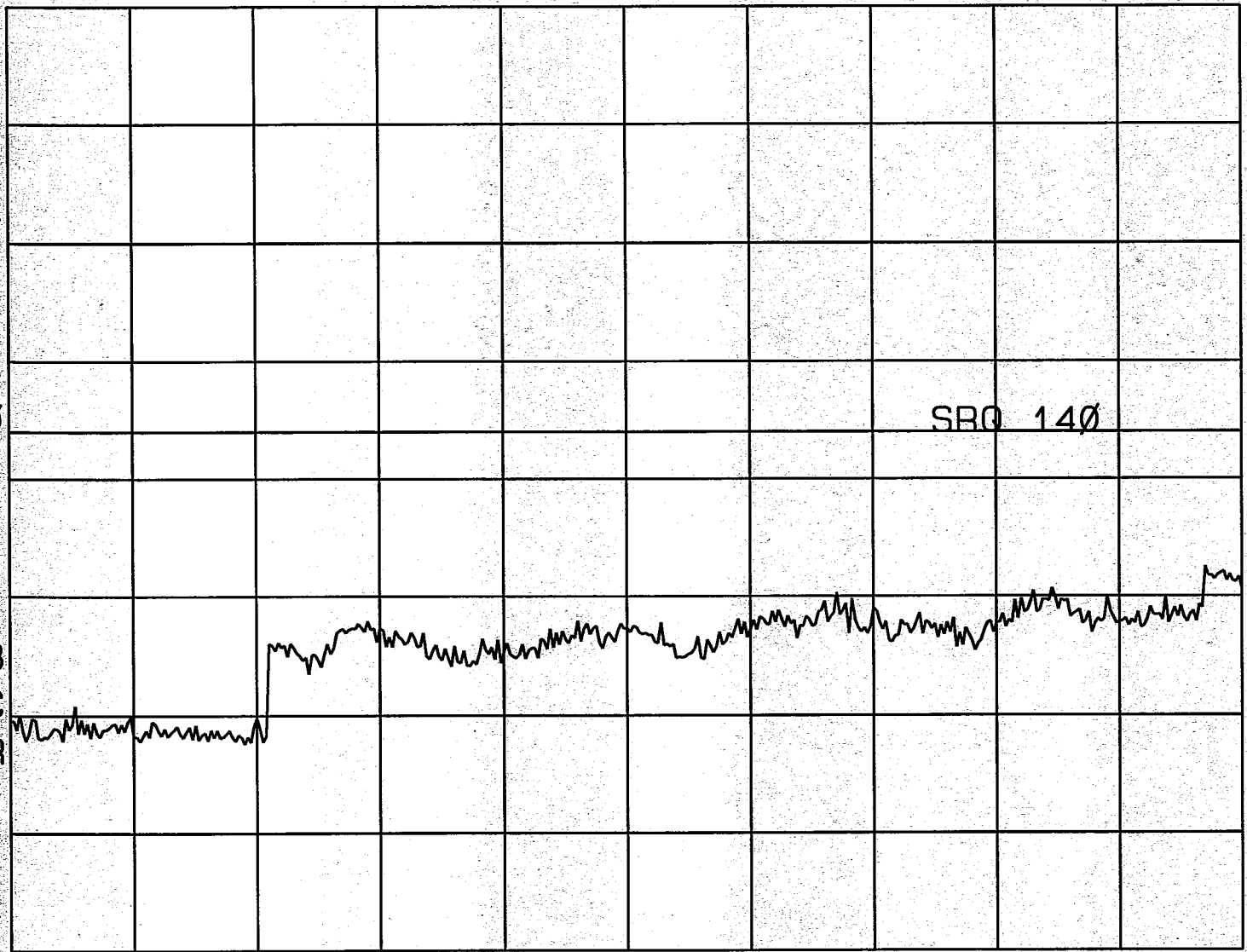
SWP 22.0 msec

CA25 HS  
SPECTRAL PLOT  
2.9 GHz To 20 GHz  
PC3 / R-FCH HRSCH

HP  
16:14:20 JUL 20, 2001

REF 23.0 dBm AT 20 dB

PEAK  
LOG  
10  
dB/  
OFFST  
20.0  
dB  
DL  
-13.0  
dBm



MARKER  
NORMAL

MARKER  
Δ

MARKER  
AMPTD

SELECT  
1 2 3 4

MARKER 1  
ON OFF

More  
1 of 3

START 2.90 GHz

#RES BW 1.0 MHz

#VBW 1 MHz

STOP 20.00 GHz

SWP 351 msec

HP 16:17:55 JUL 20, 2001

EM 600 PCS  
SPECTRA PLOT  
0 Hz TO 1.95 GHz  
PC3 / R-FCA + R-SCN

REF 23.0 dBm AT 20 dB

PEAK  
LOG  
10  
dB/  
OFFST  
20.0  
dB  
DL  
-13.0  
dBm

MARKER  
NORMAL

MARKER  
△

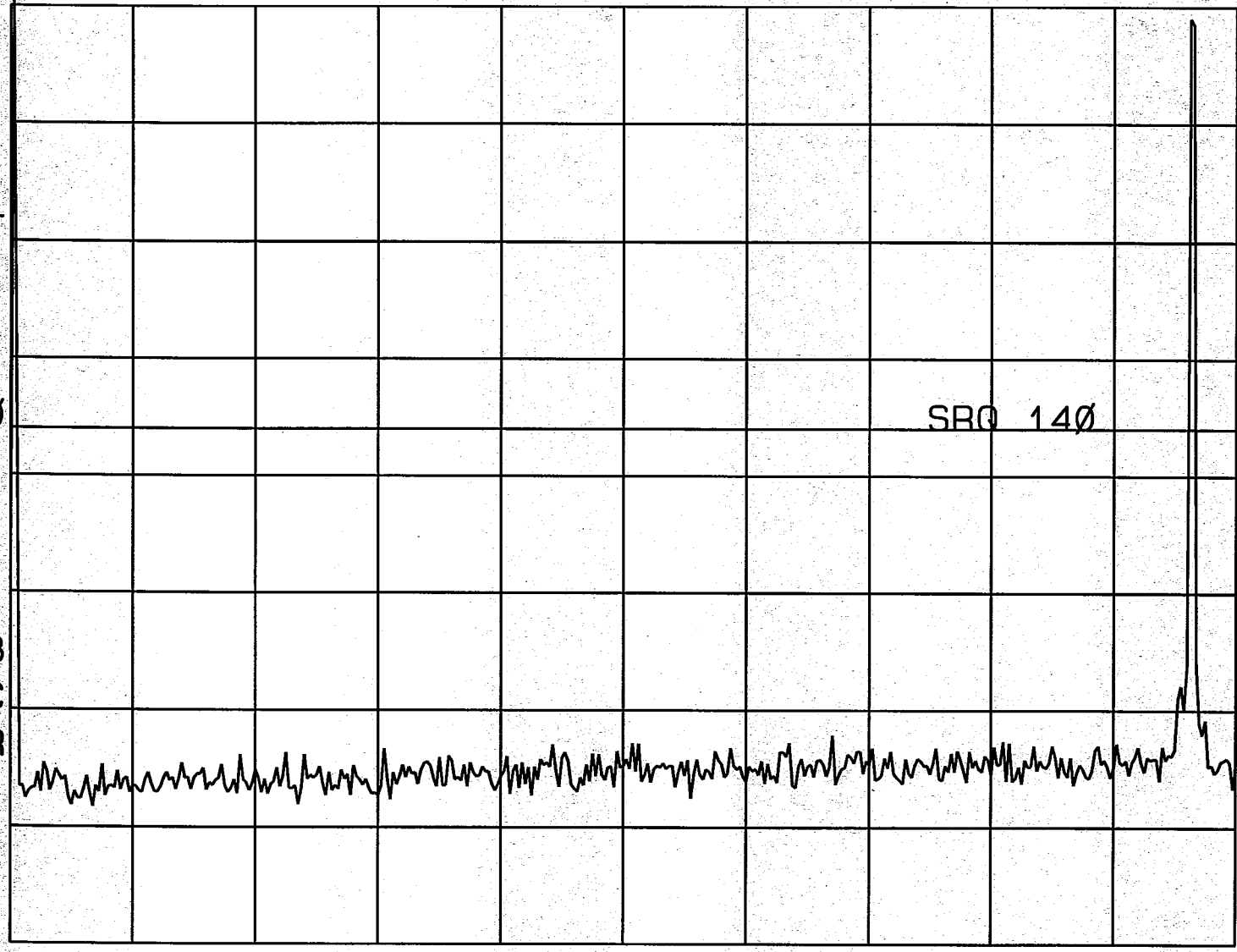
MARKER  
AMPTD

SELECT  
1 2 3 4

WA SB  
SC FC  
CORR

MARKER 1  
ON OFF

More  
1 of 3



START 0 Hz

STOP 1.950 GHz

#RES BW 1.0 MHz

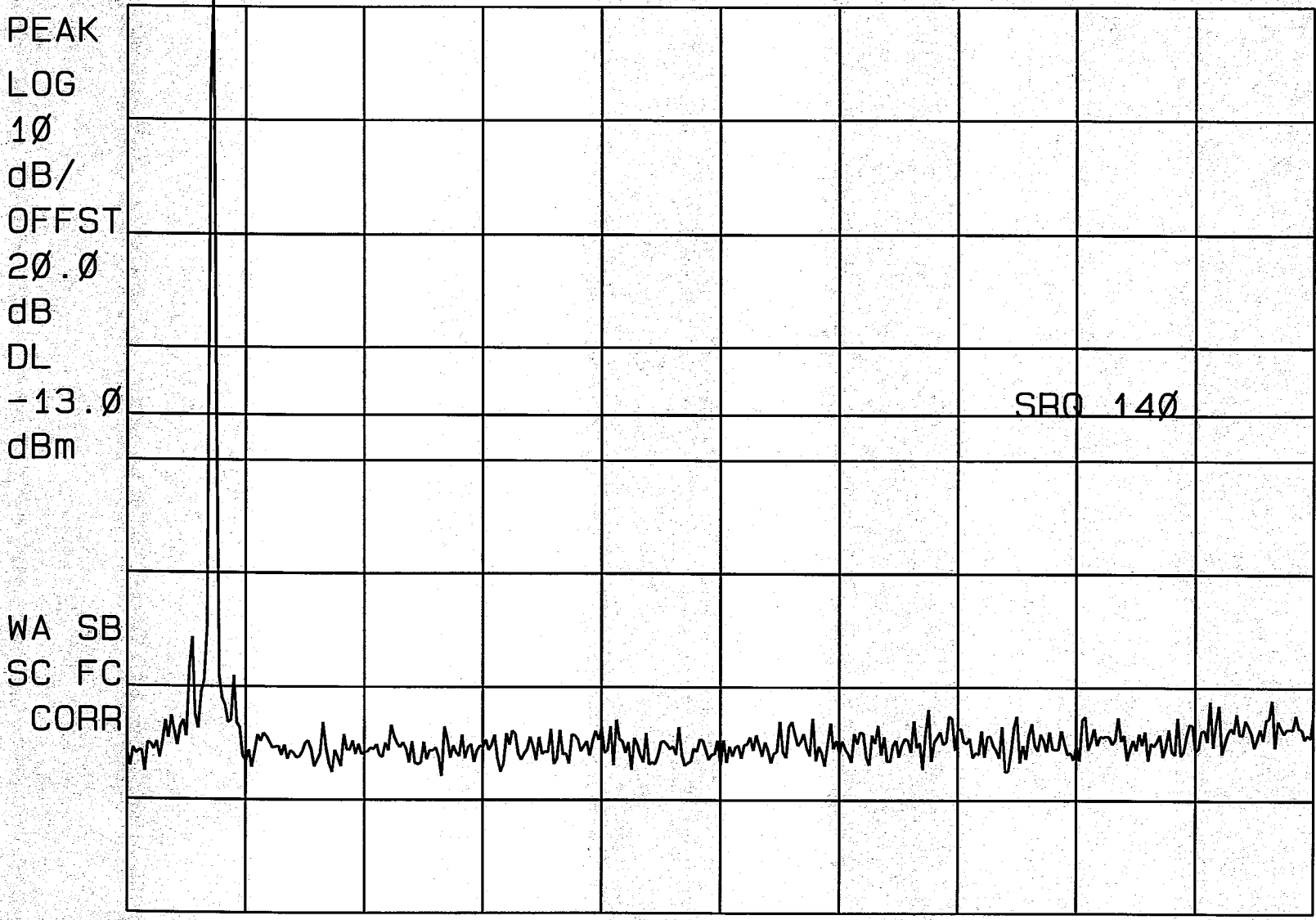
#VBW 1 MHz

SWP 39.0 msec

16:18:23 JUL 20, 2001  
HP

REF 23.0 dBm AT 20 dB

CH 600 PCS  
1.8GHz TO 2.9GHz  
RC3 / R-FCH + E-SCH



MARKER  
NORMAL

MARKER  
△

MARKER  
AMPTD

SELECT  
1 2 3 4

MARKER 1  
ON OFF

More  
1 of 3

START 1.800 GHz

STOP 2.900 GHz

#RES BW 1.0 MHz

#VBW 1 MHz

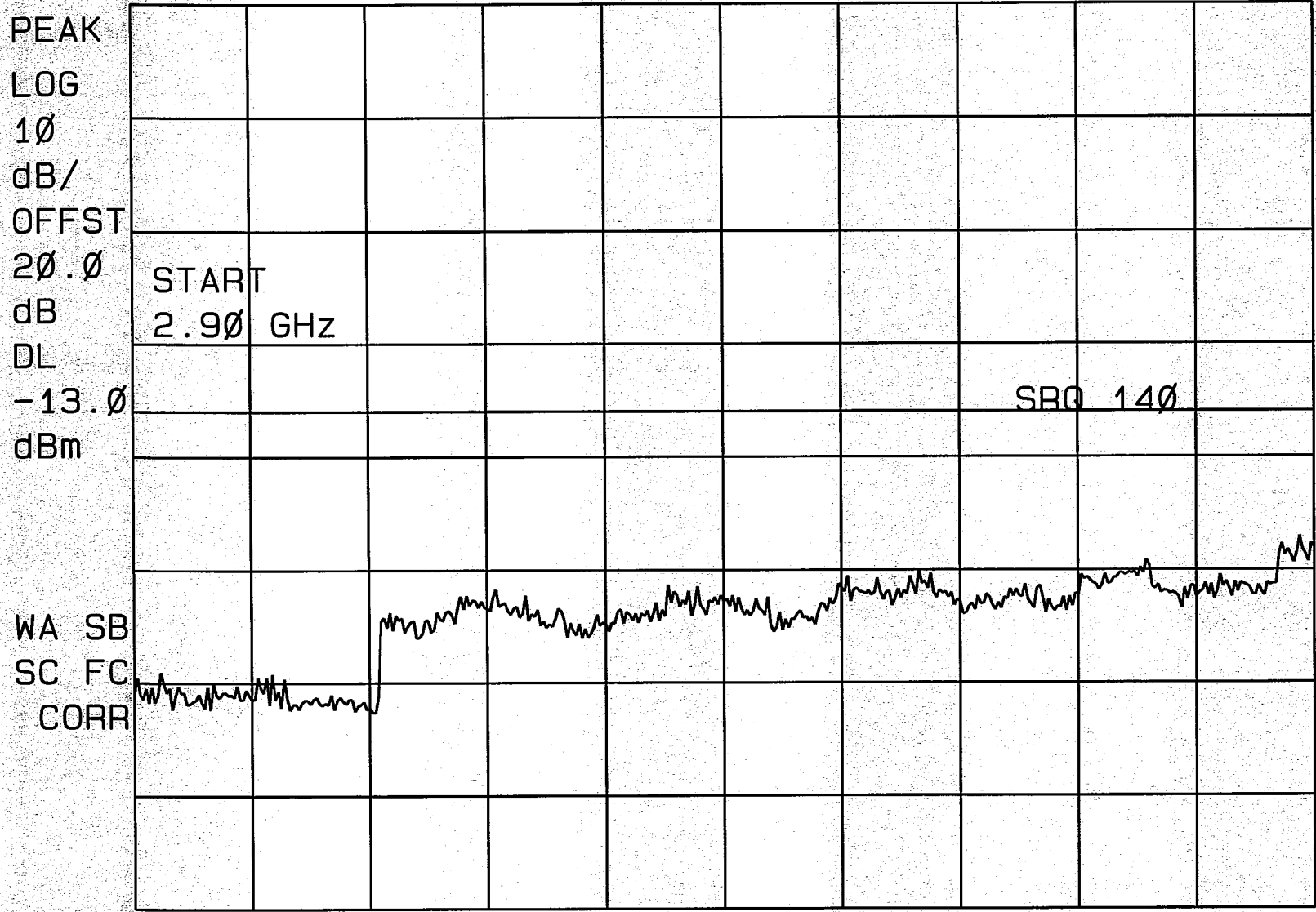
SWP 22.0 msec



HP 16:17:06 JUL 20, 2001

CH 600 PCS  
2.9GHz TO 20GHz  
PC3/R-FH+R-SEH

REF 23.0 dBm AT 20 dB



CENTER FREQ

START FREQ

STOP FREQ

CF STEP AUTO MAN

SWEEP LOG LIN

More 1 of 2

START 2.90 GHz

STOP 20.00 GHz

#RES BW 1.0 MHz

#VBW 1 MHz

SWP 351 msec

17:04:48 JUL 20, 2001

CH 1175 PCS  
SPECTRAL  
OHT to 1.95 GHz  
PC3 / R-FCH+R-SH

REF 25.0 dBm AT 20 dB

PEAK  
LOG  
10  
dB/  
OFFST  
20.0  
dB  
DL  
-13.0  
dBm

MARKER  
NORMAL

MARKER  
△

MARKER  
AMPTD

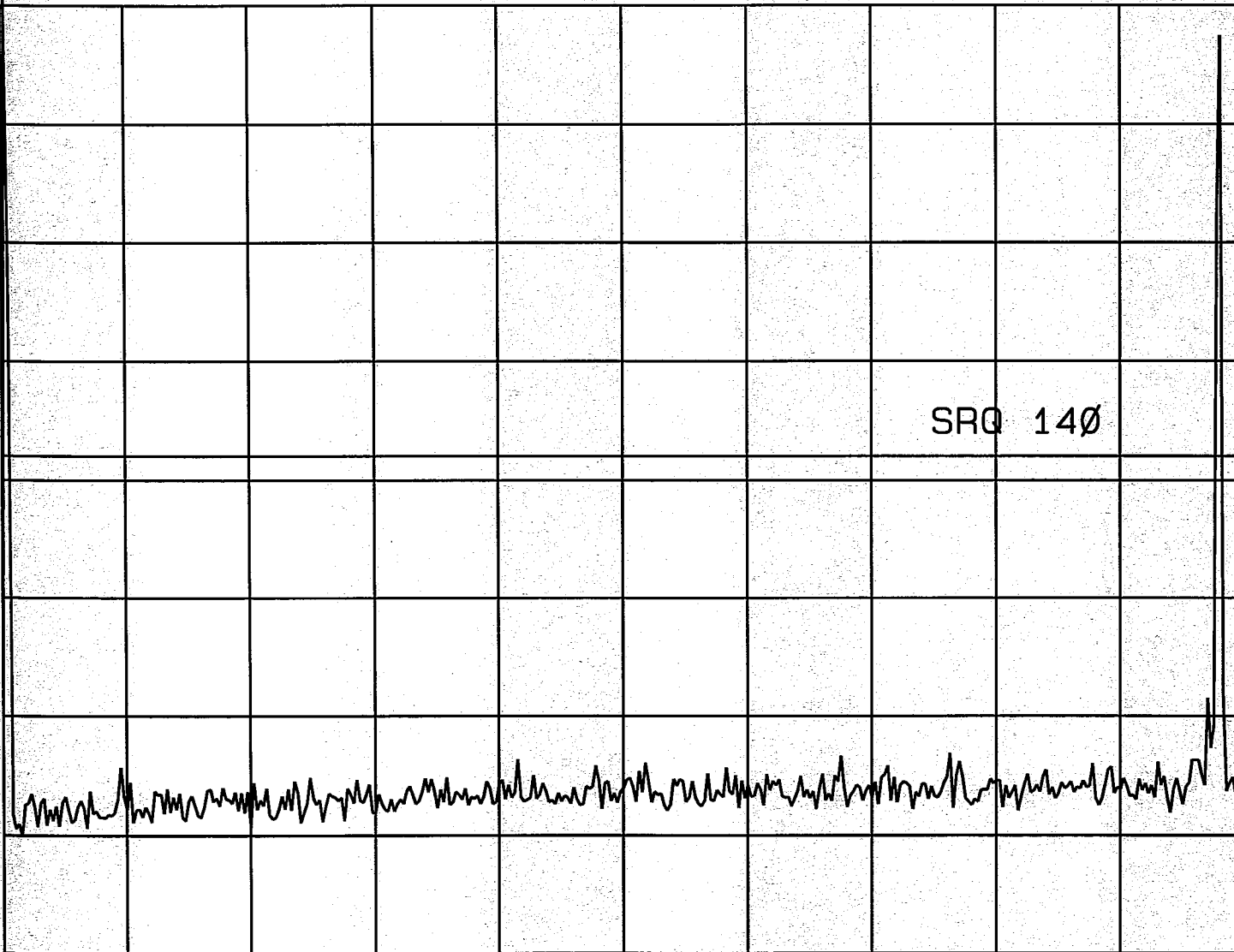
SRQ 140

SELECT  
1 2 3 4

WA SB  
SC FC  
CORR

MARKER 1  
ON OFF

More  
1 of 3



CENTER 975 MHz

SPAN 1.950 GHz

#RES BW 1.0 MHz

#VBW 1 MHz

SWP 39.0 msec

17:05:28 JUL 20, 2001

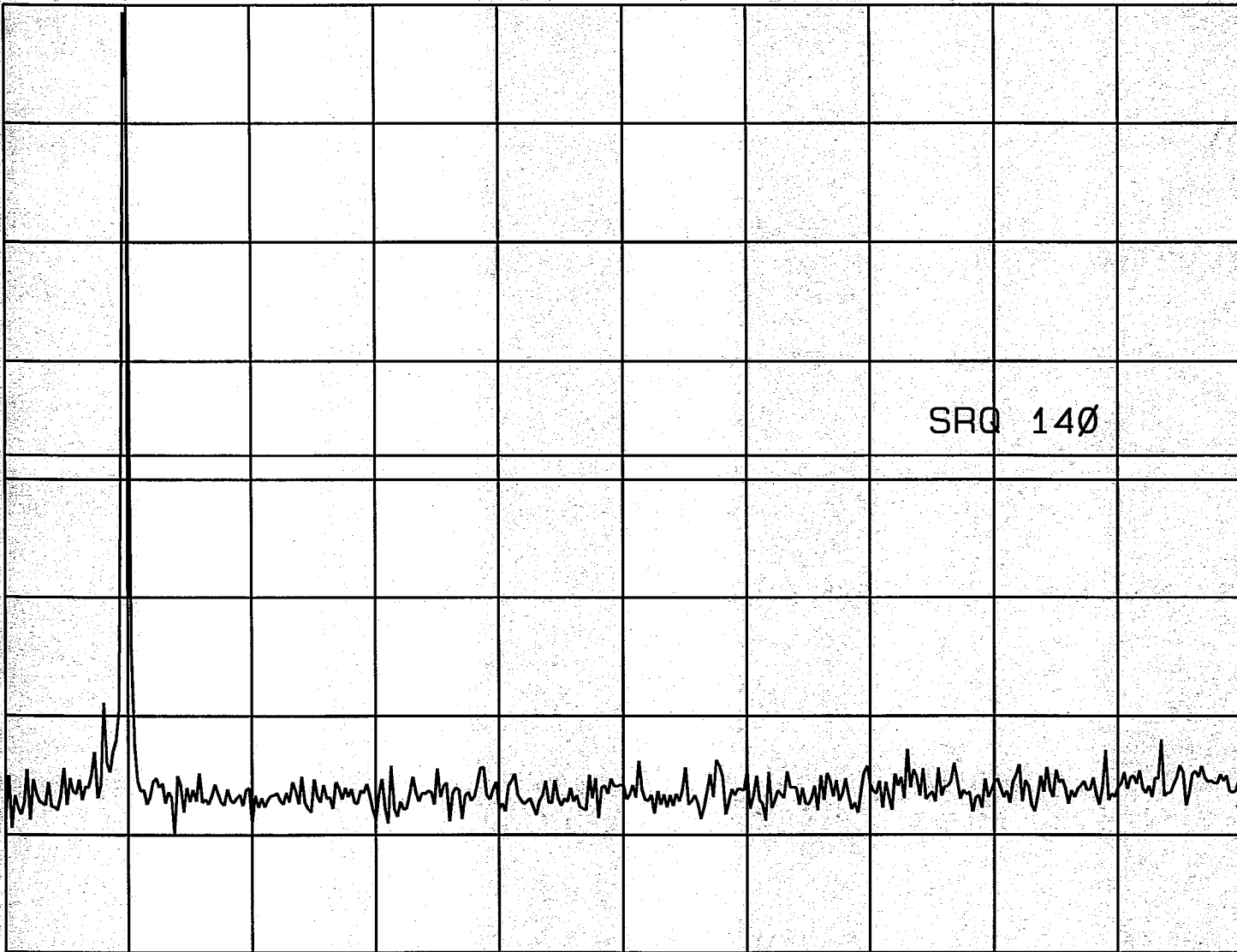
REF 25.0 dBm

AT 20 dB

CH 1175 PCS  
SPECTRAL  
1.8GHz TO 2.9GHz  
RC3/R-FCH+R-SEA

PEAK  
LOG  
10  
dB/  
OFFST  
20.0  
dB  
DL  
-13.0  
dBm

WA SB  
SC FC  
CORR



MARKER  
NORMAL

MARKER  
△

MARKER  
AMPTD

SELECT  
1 2 3 4

MARKER 1  
ON OFF

More  
1 of 3

START 1.800 GHz

STOP 2.900 GHz

#RES BW 1.0 MHz

#VBW 1 MHz

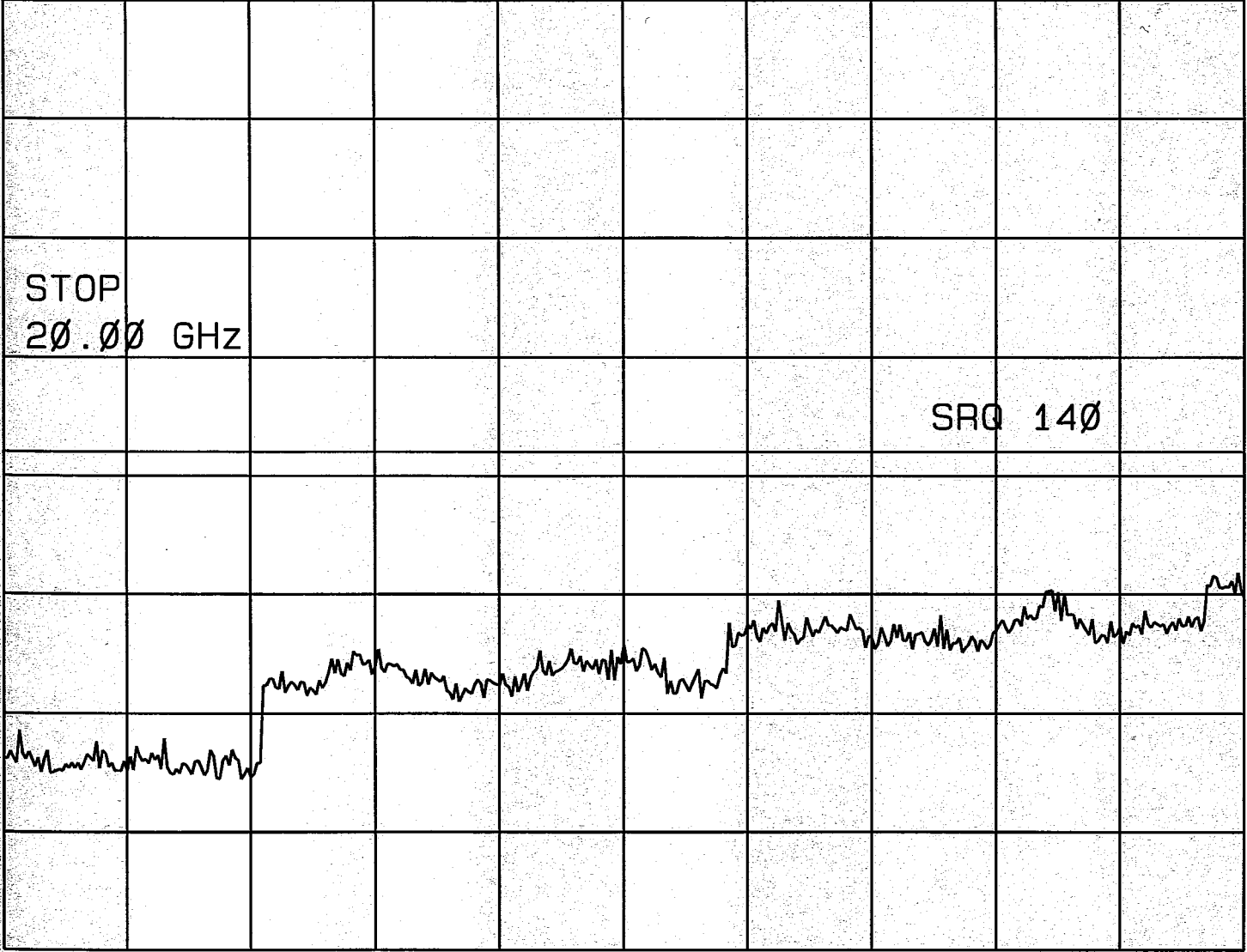
SWP 22.0 msec

CA 1175 PCS  
2.9GHz TO 20GHz  
PC3/R-FCH+R-SA

17:06:32 JUL 20, 2001  
hp

REF 25.0 dBm AT 20 dB

PEAK  
LOG  
10  
dB/  
OFFST  
20.0  
dB  
DL  
-13.0  
dBm  
WA SB  
SC FC  
CORR



CENTER  
FREQ

START  
FREQ

STOP  
FREQ

CF STEP  
AUTO MAN

SWEEP  
LOG LIN

More  
1 of 2

START 2.90 GHz

STOP 20.00 GHz

#RES BW 1.0 MHz

#VBW 1 MHz

SWP 351 msec