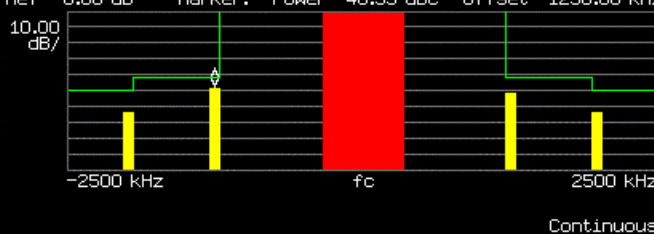




RC3 R-FCH ACPR Spectrum + PTXmax

Instrument Identification Information - Microsoft Internet Explorer

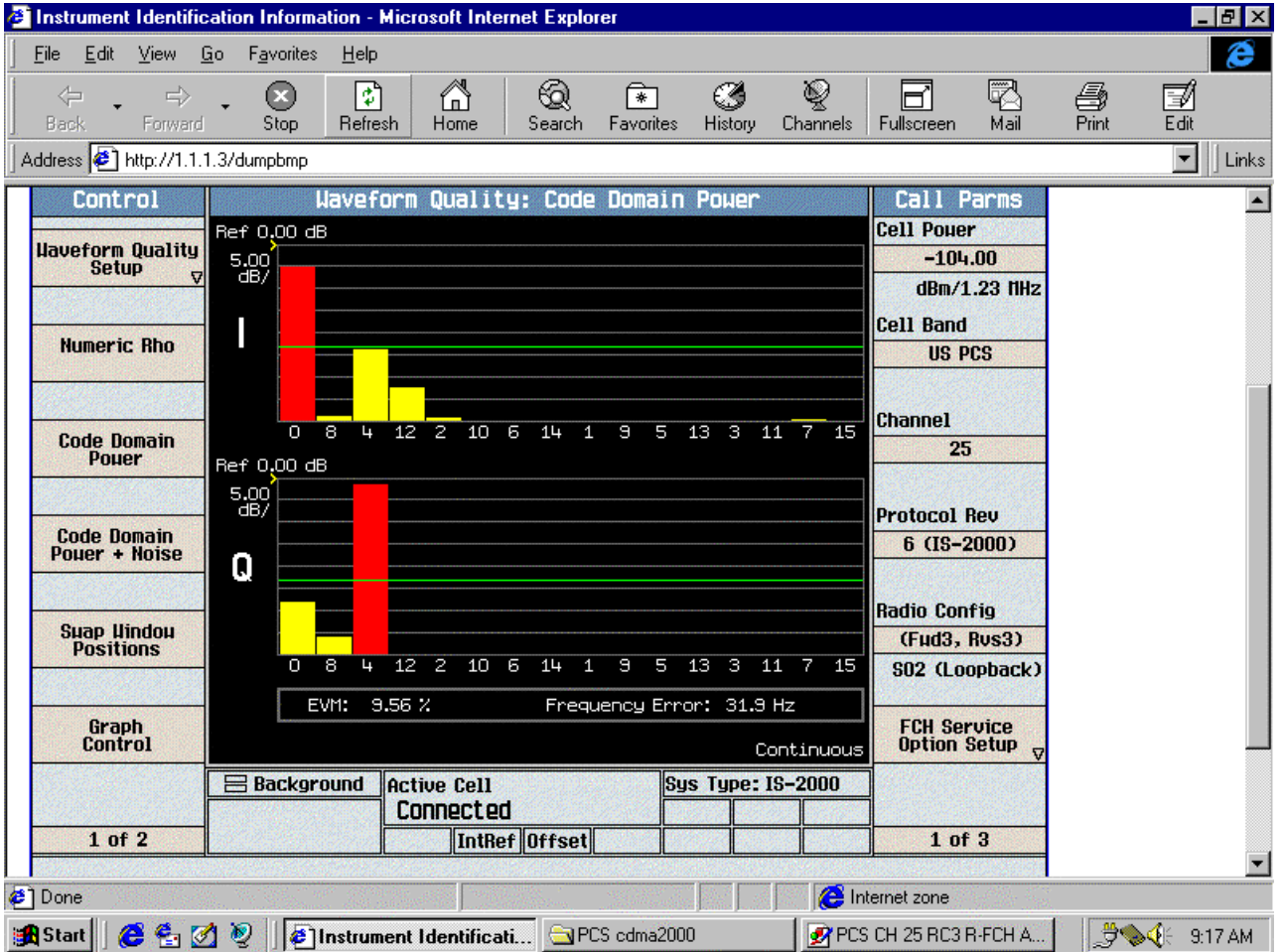
Address: http://1.1.1.3/dumpbmp

<b>Call Control</b>	<b>Tx Spurious Emissions</b>	<b>Call Parms</b>
<b>Operating Mode</b> Active Cell <b>System Type</b> IS-2000 <b>End Call</b> <b>Paging INSI Setup</b> <b>Handoff Setup</b>	Ref: 0.00 dB    Marker: Power -48.53 dBc    Offset -1250.00 kHz  -2500 kHz    fc    2500 kHz Continuous	<b>Cell Power</b> -104.00 dBm/1.23 MHz <b>Cell Band</b> US PCS <b>Channel</b> 25 <b>Protocol Rev</b> 6 (IS-2000) <b>Radio Config</b> (Fud3, Rvs3) S02 (Loopback) <b>FCH Service Option Setup</b>
	<b>Digital Average Power</b>	
	Digital Average Power <b>22.89 dBm</b> Expected Mobile Power: 23.00 dBm/1.23 MHz Continuous	
	Background    Active Cell Connected Sys Type: IS-2000	
2 of 2	IntRef    Offset	1 of 3

Internet zone

Start    Instrument Identificati...    Fcc    9:11 AM

RC3 R-FCH Code Domain



Ch600

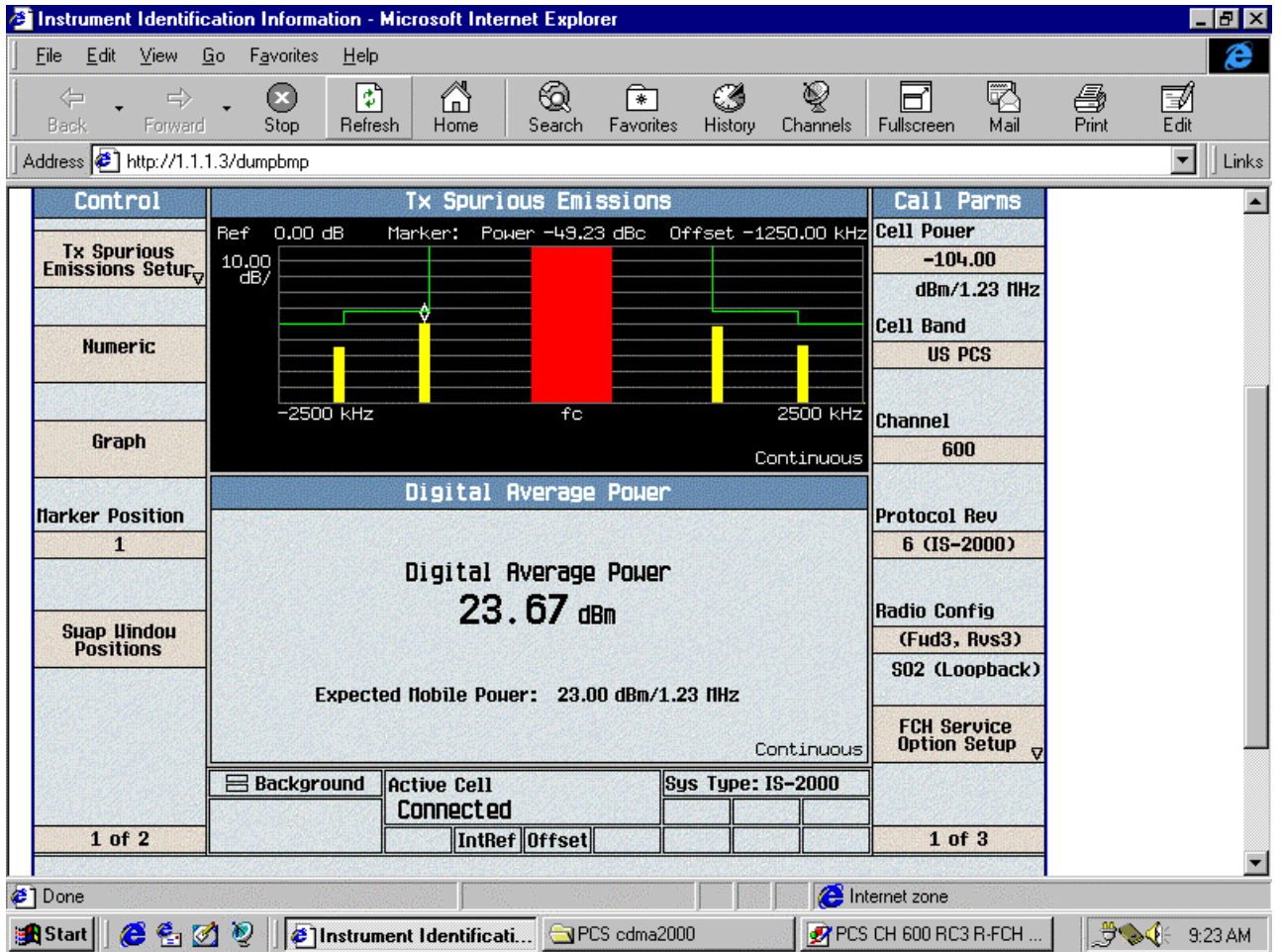
RC3 R-FCH ACPR Data + PTXmax

The screenshot shows a web browser window titled "Instrument Identification Information - Microsoft Internet Explorer". The address bar shows "http://1.1.1.3/dumpbmp". The main content area is divided into several sections:

Control	Tx Spurious Emissions		Call Parms
Tx Spurious Emissions Setup	-1.250 MHz Offset	1.250 MHz Offset	Cell Power
	-49.04 dBc	-51.29 dBc	-104.00
Numeric			dBm/1.23 MHz
	-1.98 MHz Offset	+1.98 MHz Offset	Cell Band
	-63.82 dBc	-63.78 dBc	US PCS
Graph		Continuous	Channel
			600
	Digital Average Power		Protocol Rev
	Digital Average Power		6 (IS-2000)
Swap Window Positions	23.70 dBm		Radio Config
	Expected Mobile Power: 23.00 dBm/1.23 MHz		(Fud3, Rvs3)
	Continuous		S02 (Loopback)
	Background	Active Cell	FCH Service Option Setup
		Connected	
		Sys Type: IS-2000	
1 of 2	IntRef	Offset	1 of 3

The browser's status bar shows "Done" and "Internet zone". The taskbar at the bottom includes the Start button, several application icons, and the system clock showing "9:22 AM".

RC3 R-FCH ACPR Spectrum + PTXmax



RC3 R-FCH Code Domain

Instrument Identification Information - Microsoft Internet Explorer

Address: http://1.1.1.3/dumpbmp

Control	Waveform Quality: Code Domain Power	Call Parms
Waveform Quality Setup	<p>Ref 0.00 dB 5.00 dB/</p>	Cell Power -104.00 dBm/1.23 MHz
Numeric Rho		Cell Band US PCS
Code Domain Power	<p>Ref 0.00 dB 5.00 dB/</p>	Channel 600
Code Domain Power + Noise		Protocol Rev 6 (IS-2000)
Swap Window Positions	EVM: 8.97 % Frequency Error: -7.8 Hz	Radio Config (Fud3, Rvs3) S02 (Loopback)
Graph Control	Continuous	FCH Service Option Setup
	Background Active Cell Connected Sys Type: IS-2000	
1 of 2	IntRef Offset	1 of 3

Internet zone

Start | Instrument Identificati... | PCS cdma2000 | PCS CH 25 RC3 R-FCH C... | 9:21 AM

Ch1175

RC3 R-FCH ACPR Data + PTXmax

The screenshot shows a web browser window titled "Instrument Identification Information - Microsoft Internet Explorer". The address bar shows "http://1.1.1.3/dumpbmp". The main content area is a table with the following sections:

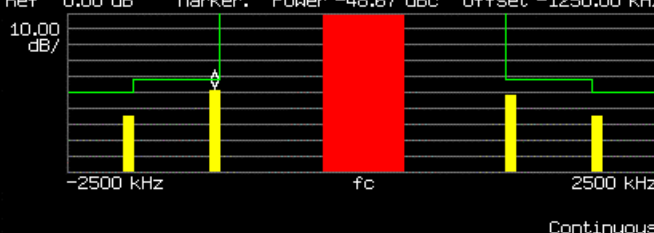
Control	Tx Spurious Emissions		Call Params
Tx Spurious Emissions Setup	-1.250 MHz Offset <b>-49.35</b> dBc	1.250 MHz Offset <b>-51.90</b> dBc	Cell Power -104.00 dBm/1.23 MHz
Numeric	-1.98 MHz Offset <b>-64.36</b> dBc	+1.98 MHz Offset <b>-65.09</b> dBc	Cell Band US PCS
Graph	Continuous		Channel 1175
Swap Window Positions	<b>Digital Average Power</b>  Digital Average Power <b>23.51</b> dBm  Expected Mobile Power: 23.00 dBm/1.23 MHz  Continuous		Protocol Rev 6 (IS-2000)
1 of 2	Background	Active Cell <b>Connected</b>	Radio Config (Fud3, Rvs3) S02 (Loopback)  FCH Service Option Setup
		IntRef	1 of 3

At the bottom of the browser window, the taskbar shows the Start button, several application icons, and the system tray with the time 9:28 AM.

RC3 R-FCH ACPR Spectrum + PTXmax

Instrument Identification Information - Microsoft Internet Explorer

Address: http://1.1.1.3/dumpbmp

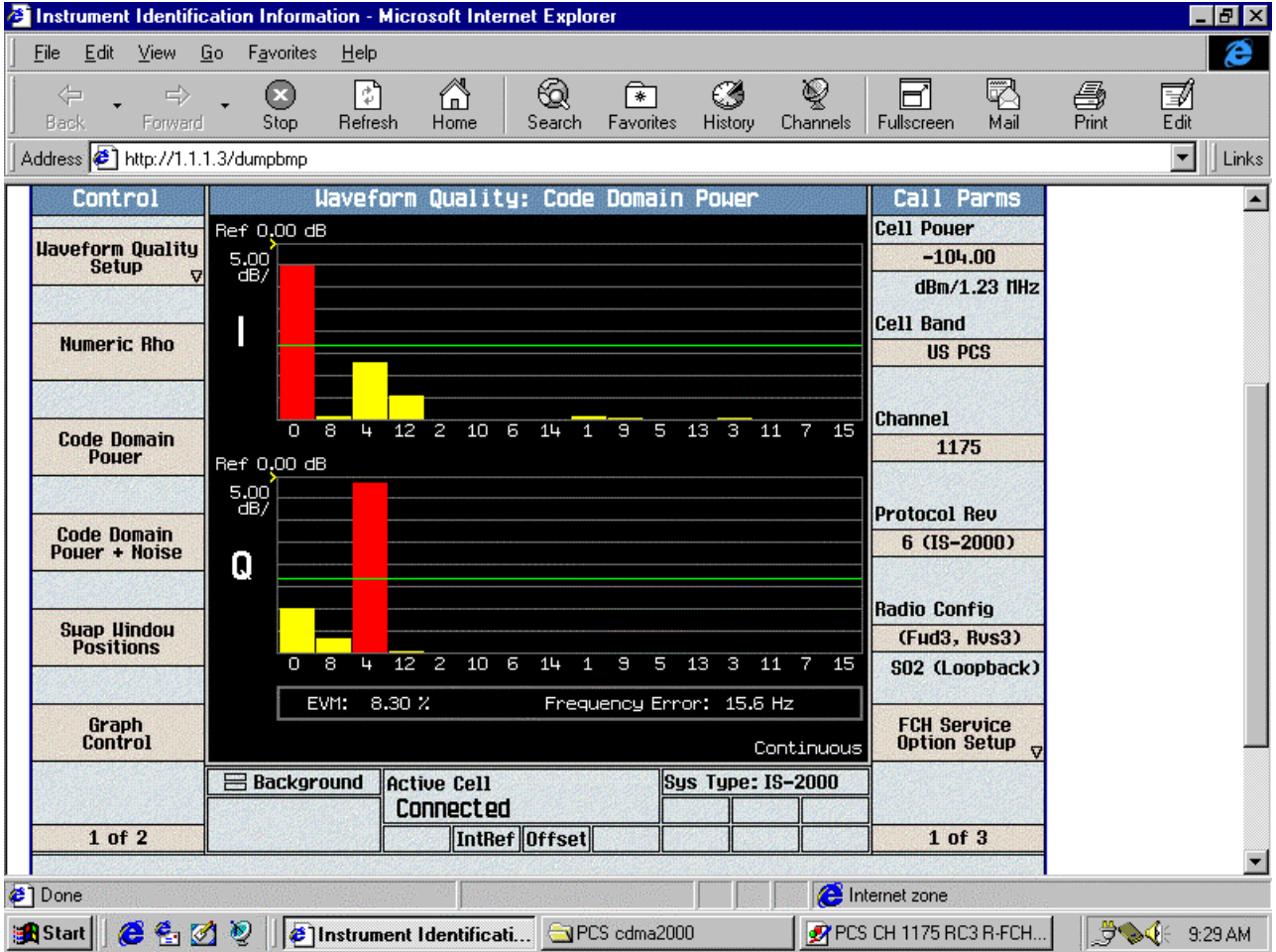
<b>Control</b> Tx Spurious Emissions Setup Numeric Graph Marker Position 1 Swap Window Positions 1 of 2	<b>Tx Spurious Emissions</b> Ref 0.00 dB    Marker: Power -48.67 dBc    Offset -1250.00 kHz  -2500 kHz    fc    2500 kHz Continuous		<b>Call Parms</b> Cell Power -104.00 dBm/1.23 MHz Cell Band US PCS Channel 1175 Protocol Rev 6 (IS-2000) Radio Config (Fud3, Rvs3) S02 (Loopback) FCH Service Option Setup 1 of 3
	<b>Digital Average Power</b> Digital Average Power <b>23.39 dBm</b> Expected Mobile Power: 23.00 dBm/1.23 MHz Continuous		
	Background	Active Cell <b>Connected</b>	Sys Type: IS-2000
	IntRef    Offset	[ ]    [ ]    [ ]	[ ]    [ ]    [ ]

Done    Internet zone

Start    Instrument Identificati...    PCS cdma2000    PCS CH 1175 RC3 R-FCH...    9:27 AM



RC3 R-FCH Code Domain



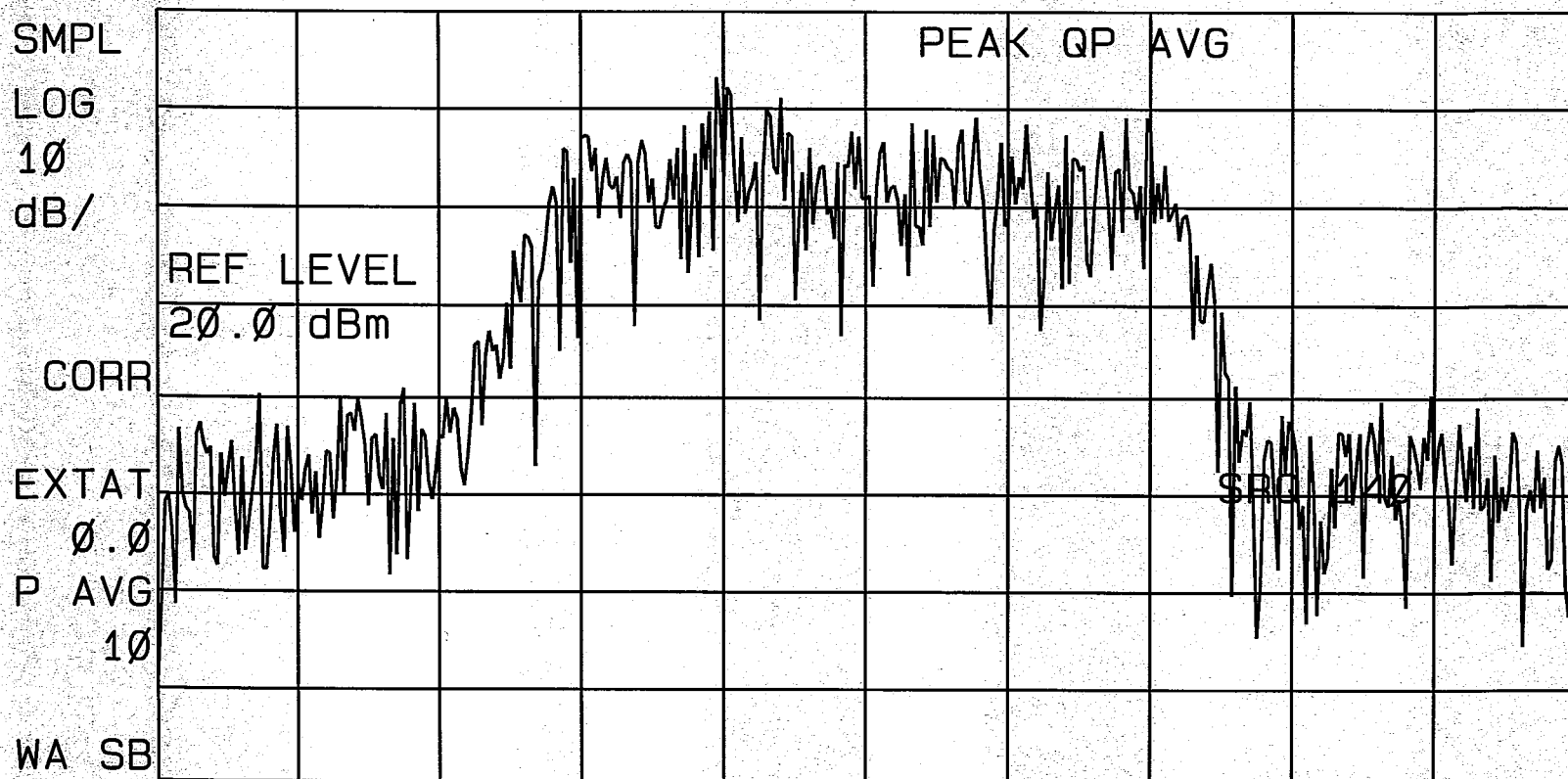
Ch25

RC3 R-FCH+R-SCH ACPR Spectrum + PTXmax and Occupied Bandwidth

16:09:18 JUL 20, 2001  
hp

CH 25 PCS  
ACPR  
PC3 / R-FCM + R-SCH

REF 20.0 dBm #AT 20 dB



REF LVL

ATTEN  
AUTO MAN

SCALE  
LOG LIN

AUTORANG  
ON OFF

LIN CHCK  
ON OFF

SC FC MS CH 25

CENTER 1.851250 GHz

SPAN 2.800 MHz

#RES BW 30 kHz

#VBW 300 kHz

SWP 20.0 msec

ACPR -OFFSET (dBc) +OFFSET (dBc)

PASS

885.0 kHz	-44.23	-48.97
1.256 MHz	-52.36	-54.73
2.750 MHz	-52.82	-54.77

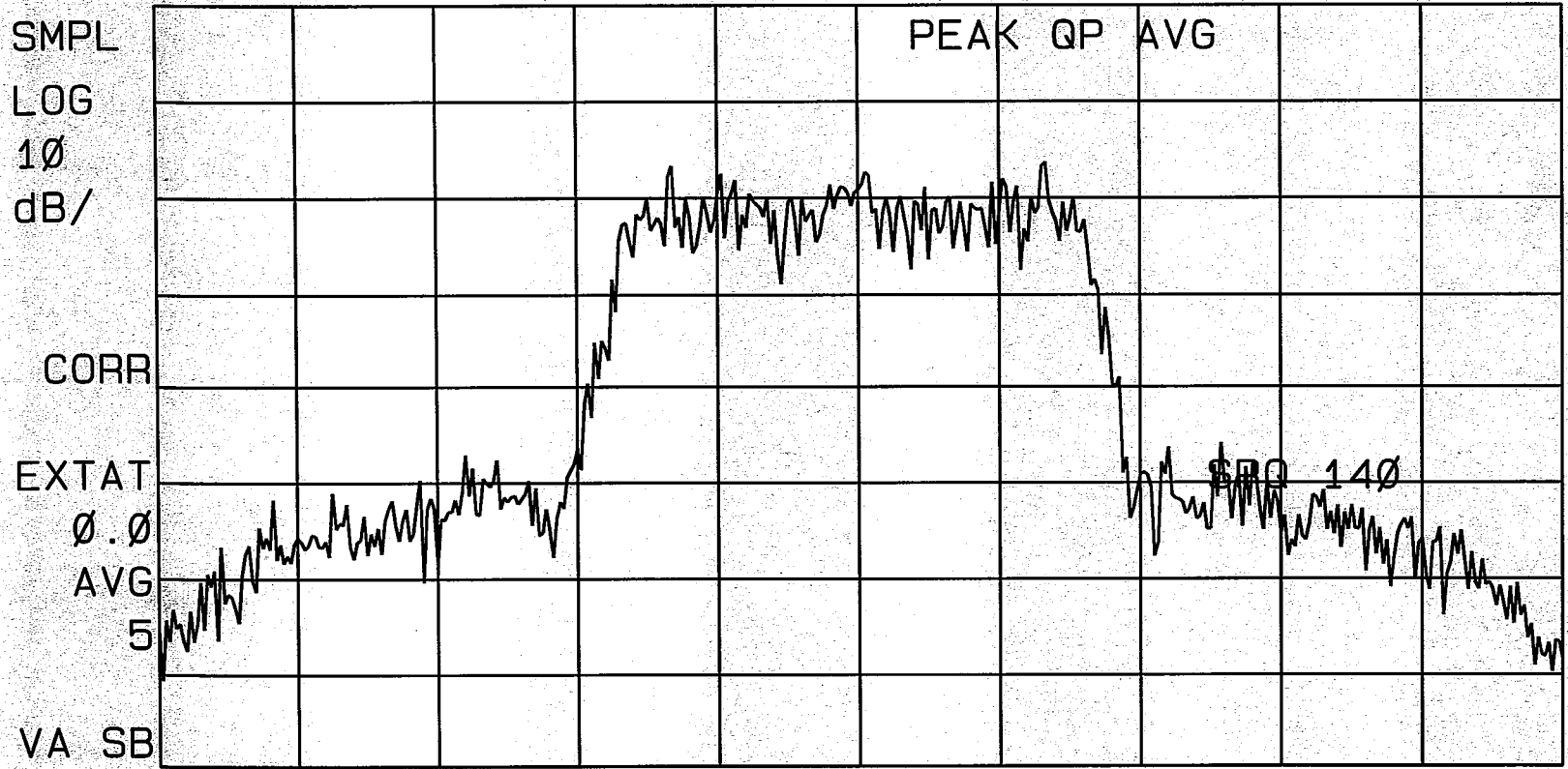
Chan Ref Power  
21.53 dBm/  
1.400 MHz

More  
1 of 3

15:42:29 JUL 20, 2001  
hp

CH 25 PCS  
OBW  
RC3/R-FCH+R-SCH

REF 15.6 dBm AT 30 dB



MARKER  
NORMAL

MARKER  
△

MARKER  
AMPTD

SELECT  
1 2 3 4

SC FC MS CH 25

CENTER 1.851250 GHz

SPAN 3.750 MHz

MARKER 1  
ON OFF

#RES BW 30 kHz

#VBW 300 kHz

SWP 20.0 msec

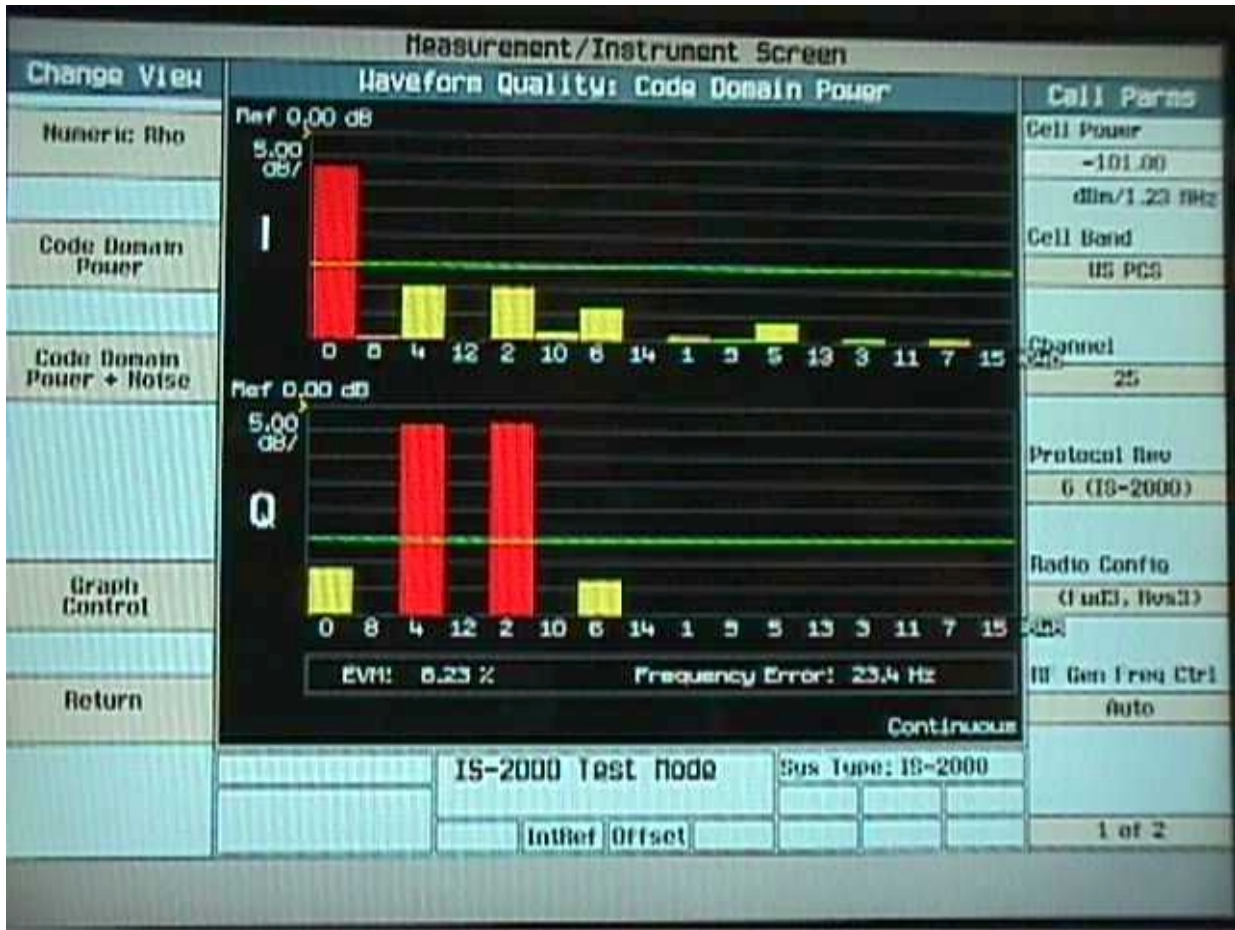
OCCUPIED BW [99.00%] PASS

Delta Frequency

1.256 MHz | -9.4 kHz

More  
1 of 3

RC3 R-FCH+R SCH Code Domain



Ch600

RC3 R-FCH+R-SCH ACPR Spectrum + PTXmax and Occupied Bandwidth

CH 600 PCS

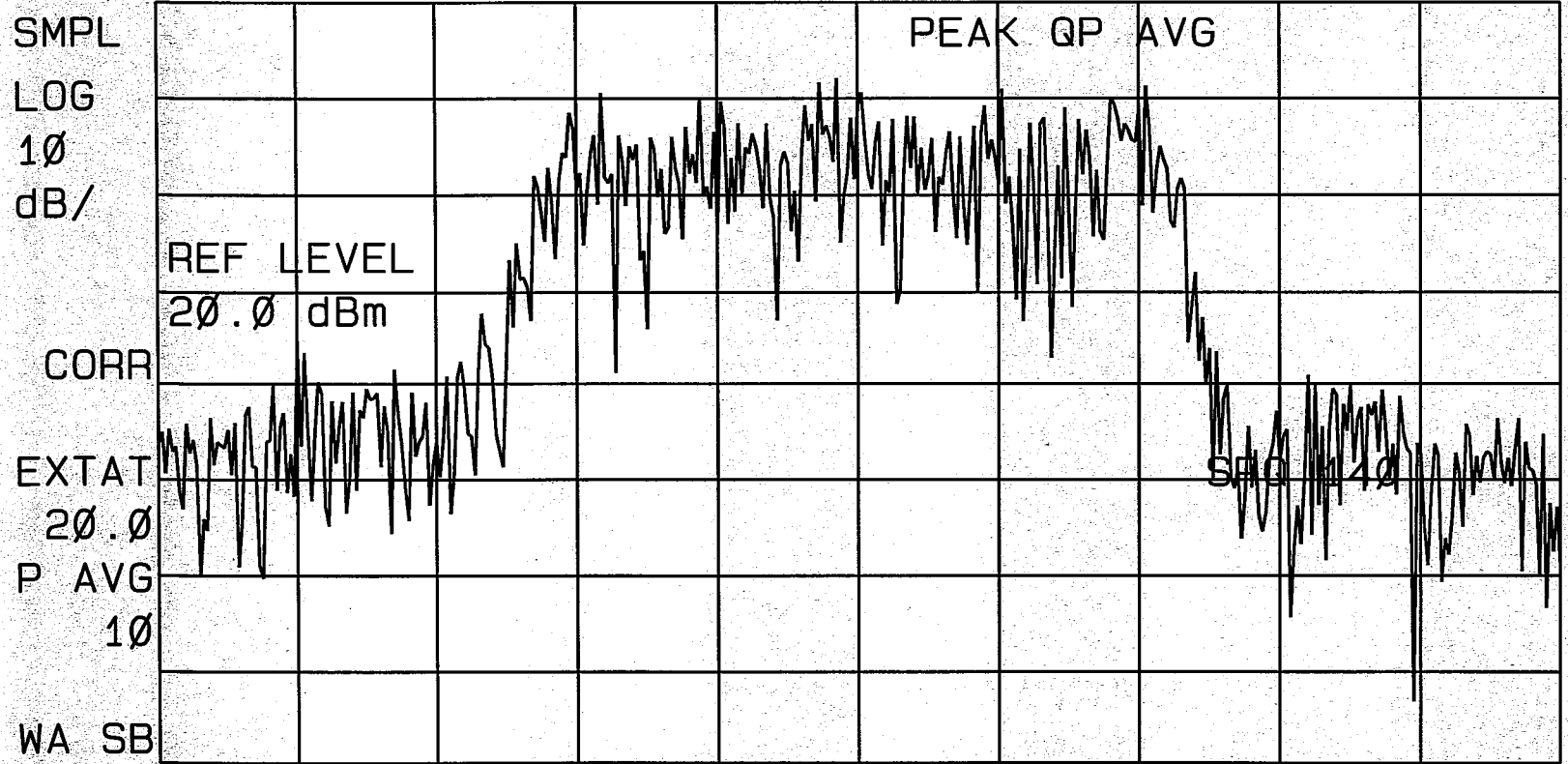
ACPR

RC3/12-FCH+R5CH

16:42:37 JUL 20, 2001

REF 20.0 dBm #AT 20 dB

REF LVL



ATTEN  
AUTO MAN

SCALE  
LOG LIN

AUTORANG  
ON OFF

LIN CHCK  
ON OFF

ACPR	-OFFSET (dBc)	+OFFSET (dBc)	
885.0 kHz	-45.59	-45.93	Chan Ref Power 19.17 dBm/ 1.400 MHz
1.256 MHz	-53.99	-50.99	
2.750 MHz	-53.61	-50.11	

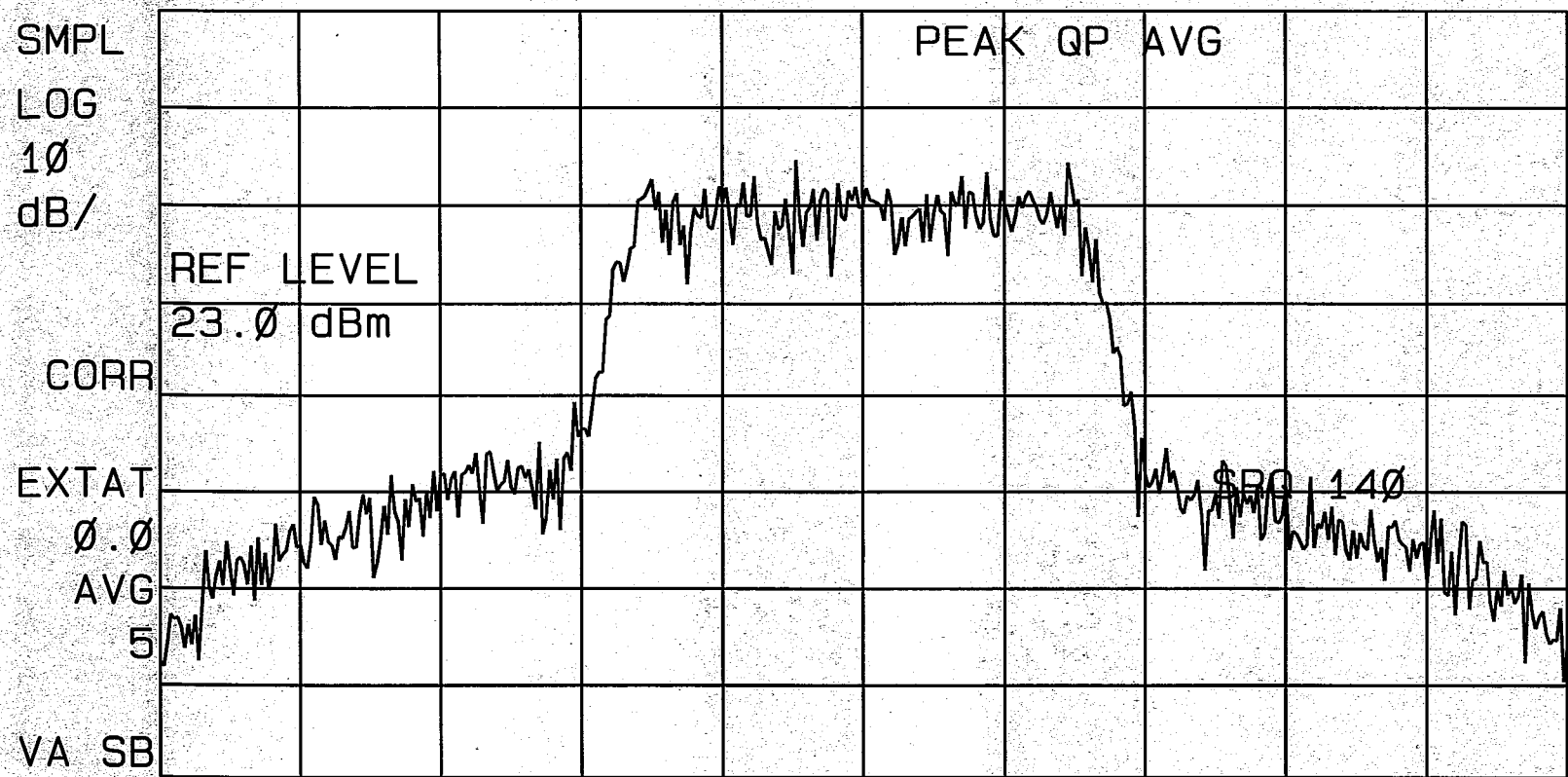
PASS

More  
1 of 3

CH 600 RES  
OBW  
PC3 / R-FCH + R-SCH

16:24:31 JUL 20, 2001

REF 23.0 dBm AT 20 dB



REF LVL

ATTEN  
AUTO MAN

SCALE  
LOG LIN

AUTORANG  
ON OFF

LIN CHCK  
ON OFF

More  
1 of 3

VA SB

CENTER 1.880000 GHz

SPAN 3.750 MHz

#RES BW 30 kHz

#VBW 300 kHz

SWP 20.0 msec

OCCUPIED BW [99.00%]

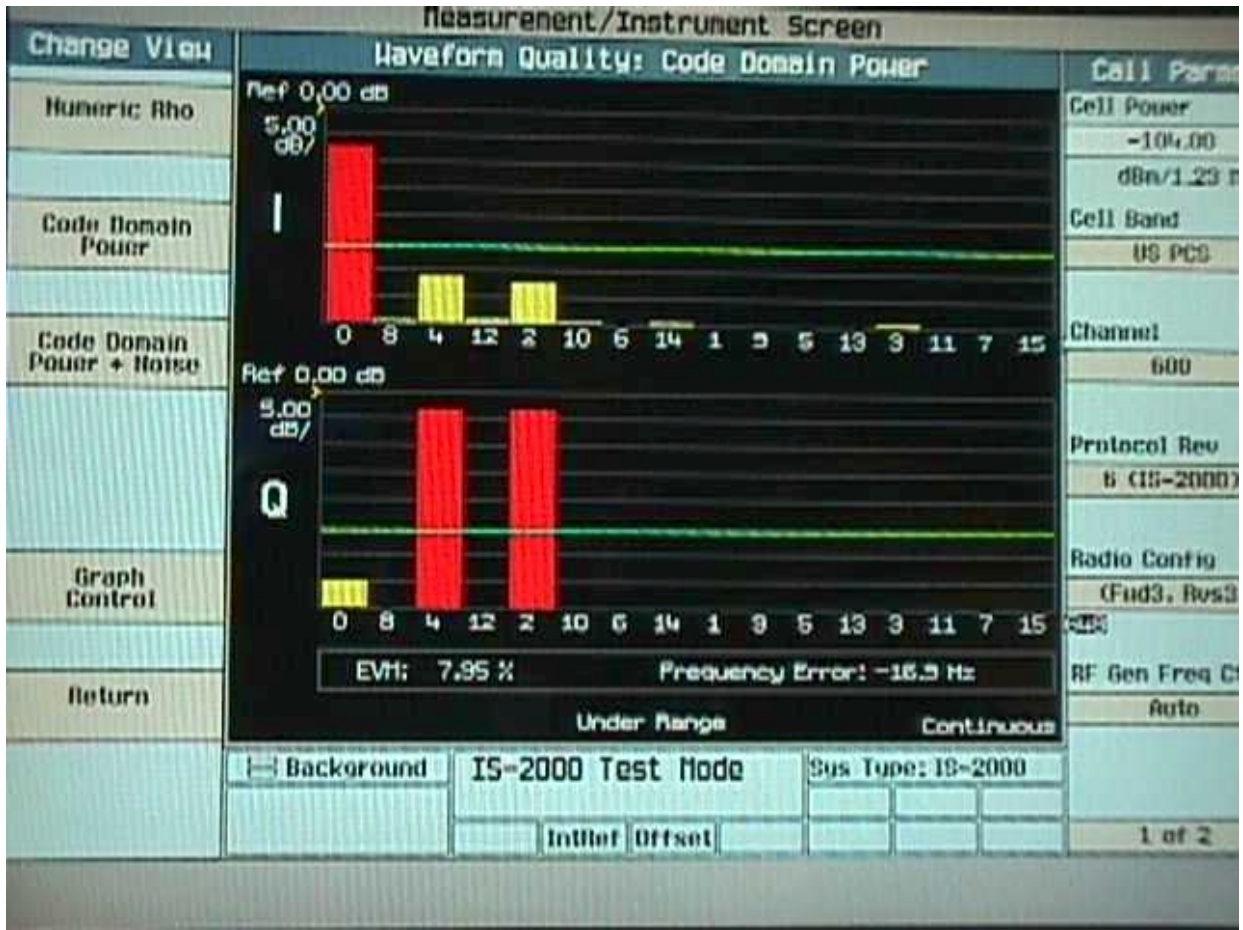
PASS

1.275 MHz

Delta Frequency  
-18.7 kHz



RC3 R-FCH+R SCH Code Domain



Ch1175

RC3 R-FCH+R-SCH ACPR Spectrum + PTXmax and Occupied Bandwidth

CH175 PCS

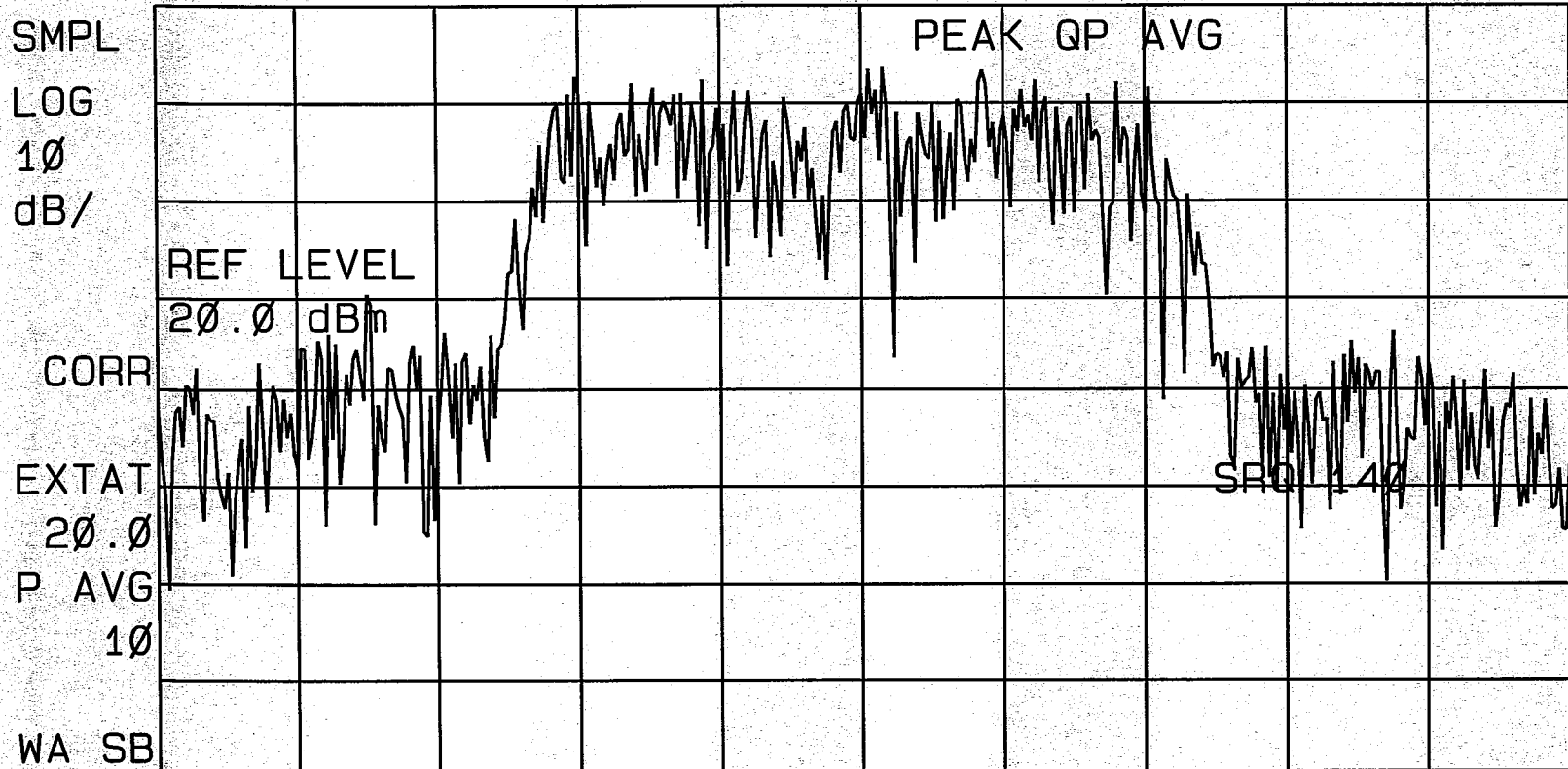
- ACPR -

PC3 / R-FCA + R-SCH

16:55:28 JUL 20, 2001

REF 20.0 dBm #AT 20 dB

REF LVL



ATTEN  
AUTO MAN

SCALE  
LOG LIN

AUTORANG  
ON OFF

SC FC MS CH 1 1 75

LIN CHCK  
ON OFF

CENTER 1.908750 GHz

SPAN 2.800 MHz

#RES BW 30 kHz

#VBW 300 kHz

SWP 20.0 msec

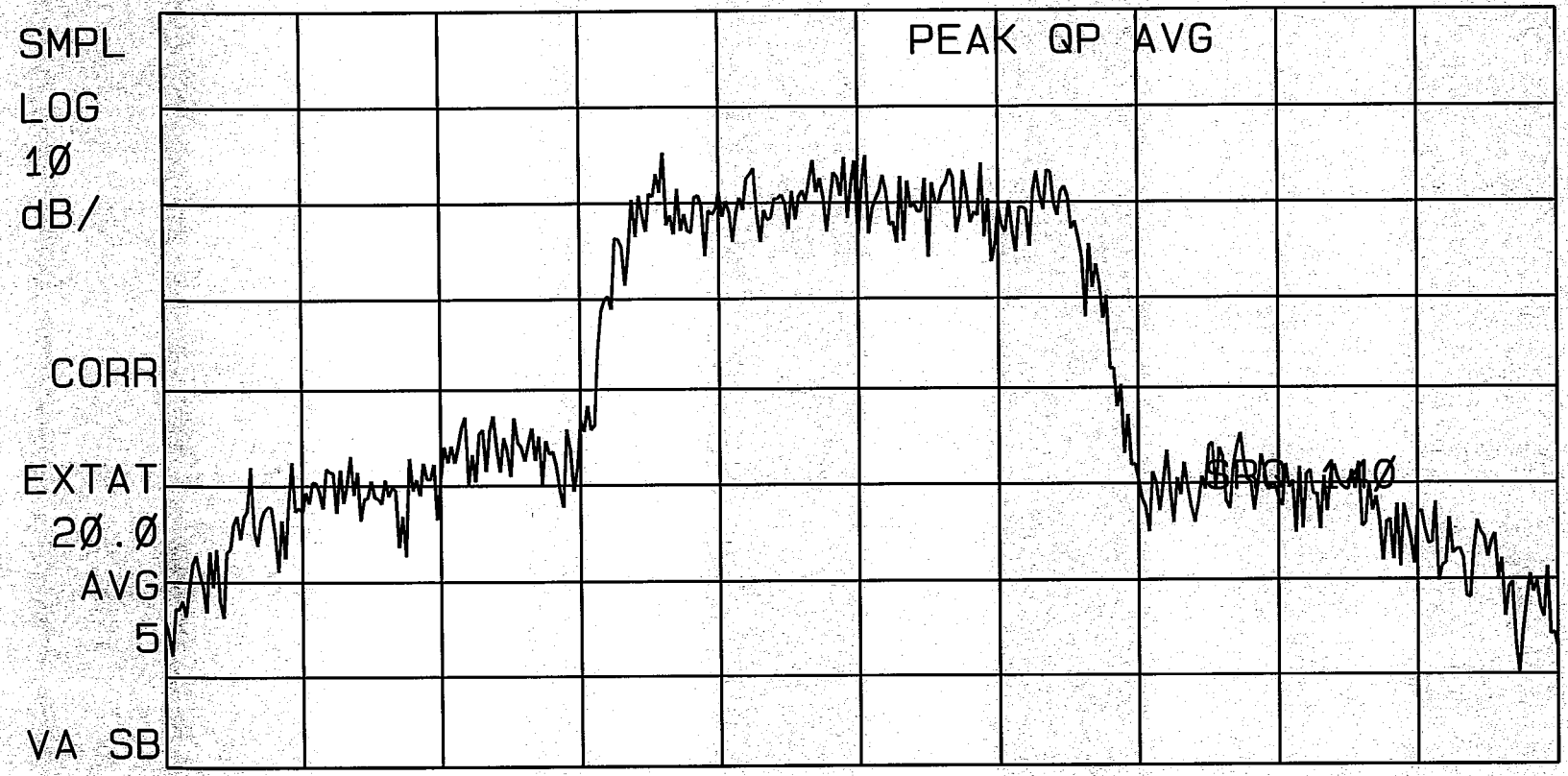
ACPR	-OFFSET (dBc)	+OFFSET (dBc)	PASS
885.0 kHz	-43.72	-47.49	Chan Ref Power 21.22 dBm/ 1.400 MHz
1.256 MHz	-48.67	-55.21	
2.750 MHz	-52.30	-52.81	

More  
1 of 3

CH 1175 PCS  
OBW  
PC3 / R-FCH + R-SCH

HP  
16:58:51 JUL 20, 2001

REF 23.6 dBm AT 20 dB



MARKER  
NORMAL

MARKER  
△

MARKER  
AMPTD

SELECT  
1 2 3 4

SC FC MS CH 1175

MARKER 1  
ON OFF

CENTER 1.908750 GHz

SPAN 3.750 MHz

#RES BW 30 KHZ

#VBW 300 KHZ

SWP 20.0 msec

OCCUPIED BW [99.00%] PASS

Delta Frequency

1.284 MHz      -14.0 KHZ

More  
1 of 3

RC3 R-FCH+R\_SCH Code Domain

