

*Exhibit 24 continue 1--*

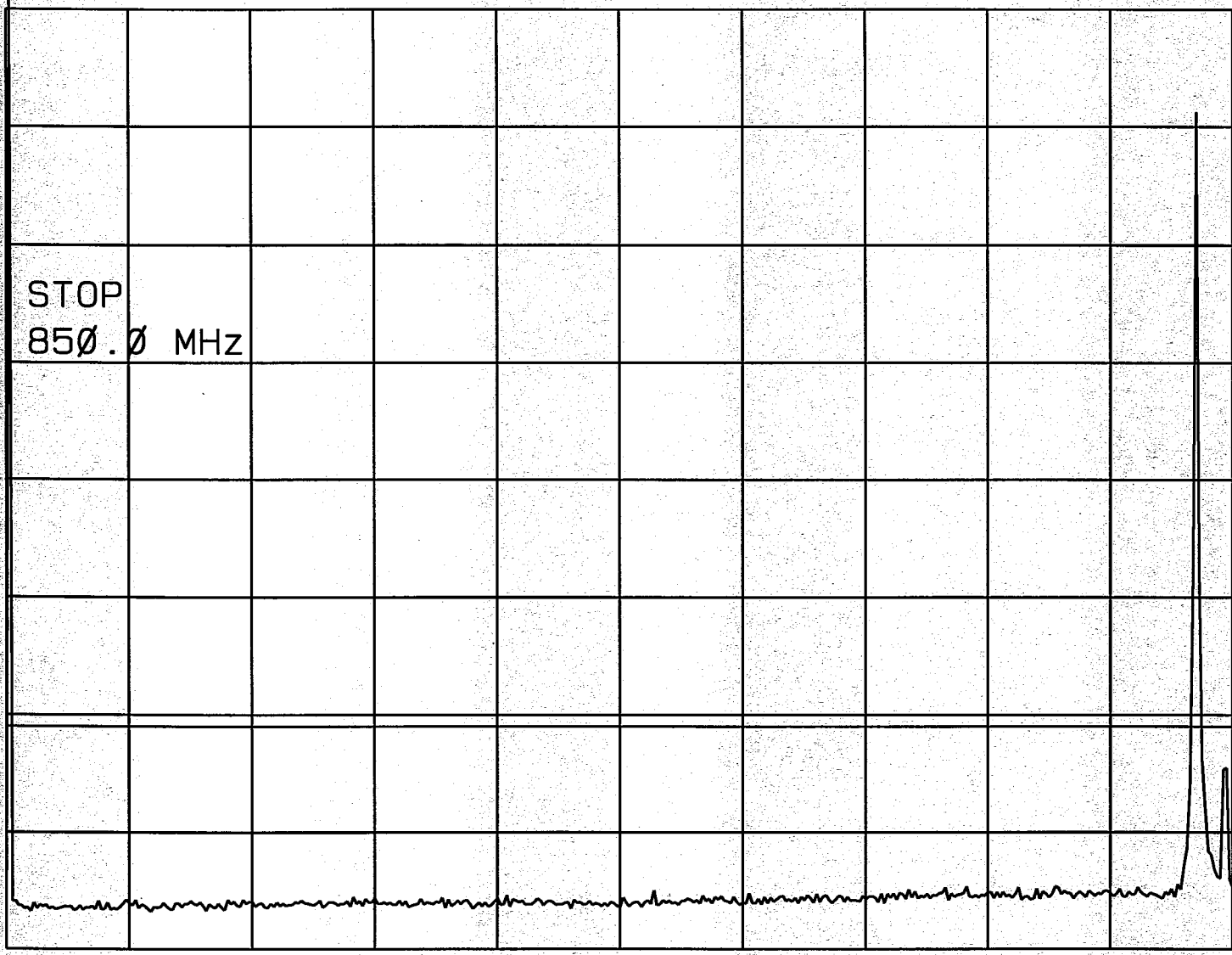
**Spurious Up to 10<sup>th</sup> Harmonics**

(a) RC3 R\_FCH + Ptxmax

12:04:17 JUL 20, 2001  
HP

REF 24.2 dBm AT 20 dB

PEAK  
LOG  
10  
dB/  
OFFST  
20.0  
dB  
DL  
-36.8  
dBm  
WA SB  
SC FC  
CORR



CENTER  
FREQ

START  
FREQ

STOP  
FREQ

CF STEP  
AUTO MAN

SWEEP  
LOG LIN

More  
1 of 2

START 0 Hz

STOP 850.0 MHz

#RES BW 30 kHz

#VBW 30 kHz

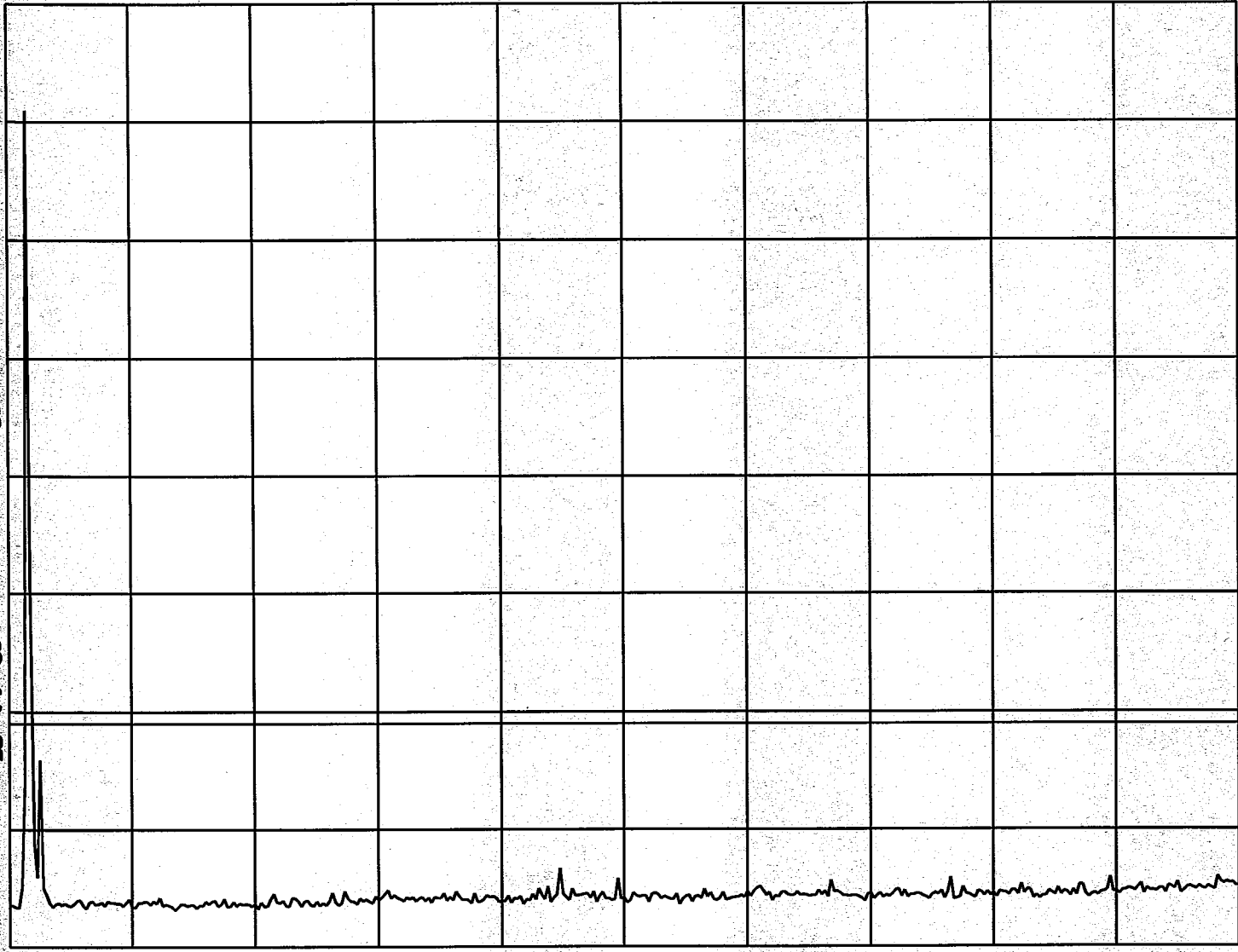
SWP 2.83 sec

CH 1013 CELLULAR  
800MHz TO 2.70GHz  
RC3/R-FCH

12:03:45 JUL 20, 2001  
HP

REF 24.2 dBm AT 20 dB

PEAK  
LOG  
10  
dB/  
OFFST  
20.0  
dB  
DL  
-36.8  
dBm  
WA SB  
SC FC  
CORR



MARKER NORMAL  
MARKER Δ  
MARKER AMPTD  
SELECT 1 2 3 4  
MARKER 1 ON OFF

More  
1 of 3

START 800 MHz

STOP 2.700 GHz

#RES BW 30 kHz

#VBW 30 kHz

SWP 6.33 sec

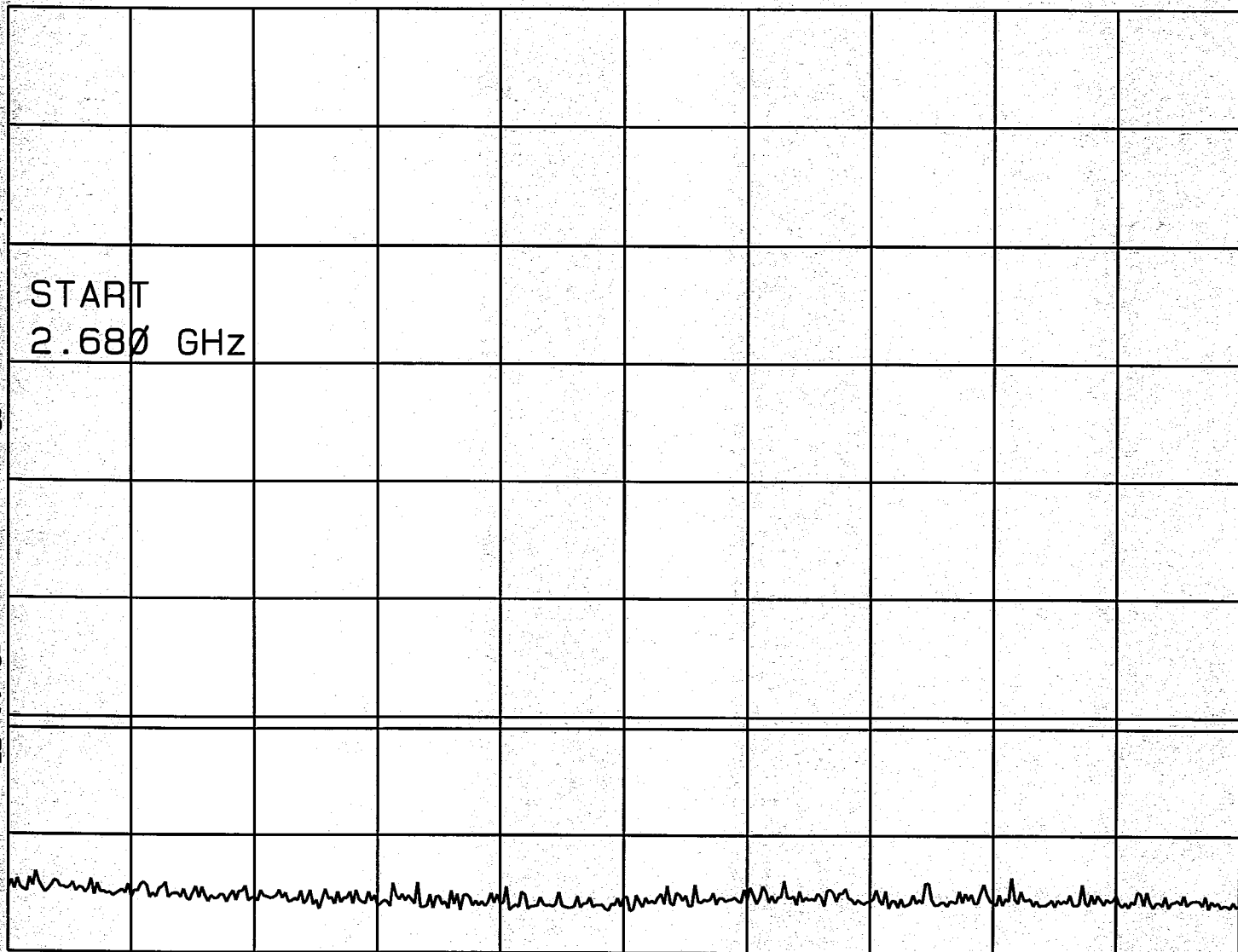
C14 1013 CELLULAR

2.68642 TO 5.1642  
DC3/R-FC4

12: 42: 00 JUL 20, 2001  
/17

REF 24.2 dBm AT 20 dB

PEAK  
LOG  
10  
dB/  
OFFST  
20.0  
dB  
DL  
-36.8  
dBm  
  
WA SB  
SC FC  
CORR



CENTER  
FREQ

START  
FREQ

STOP  
FREQ

CF STEP  
AUTO MAN

SWEEP  
LOG LIN

More  
1 of 2

START 2.680 GHz

STOP 5.100 GHz

#RES BW 30 kHz

#VBW 30 kHz

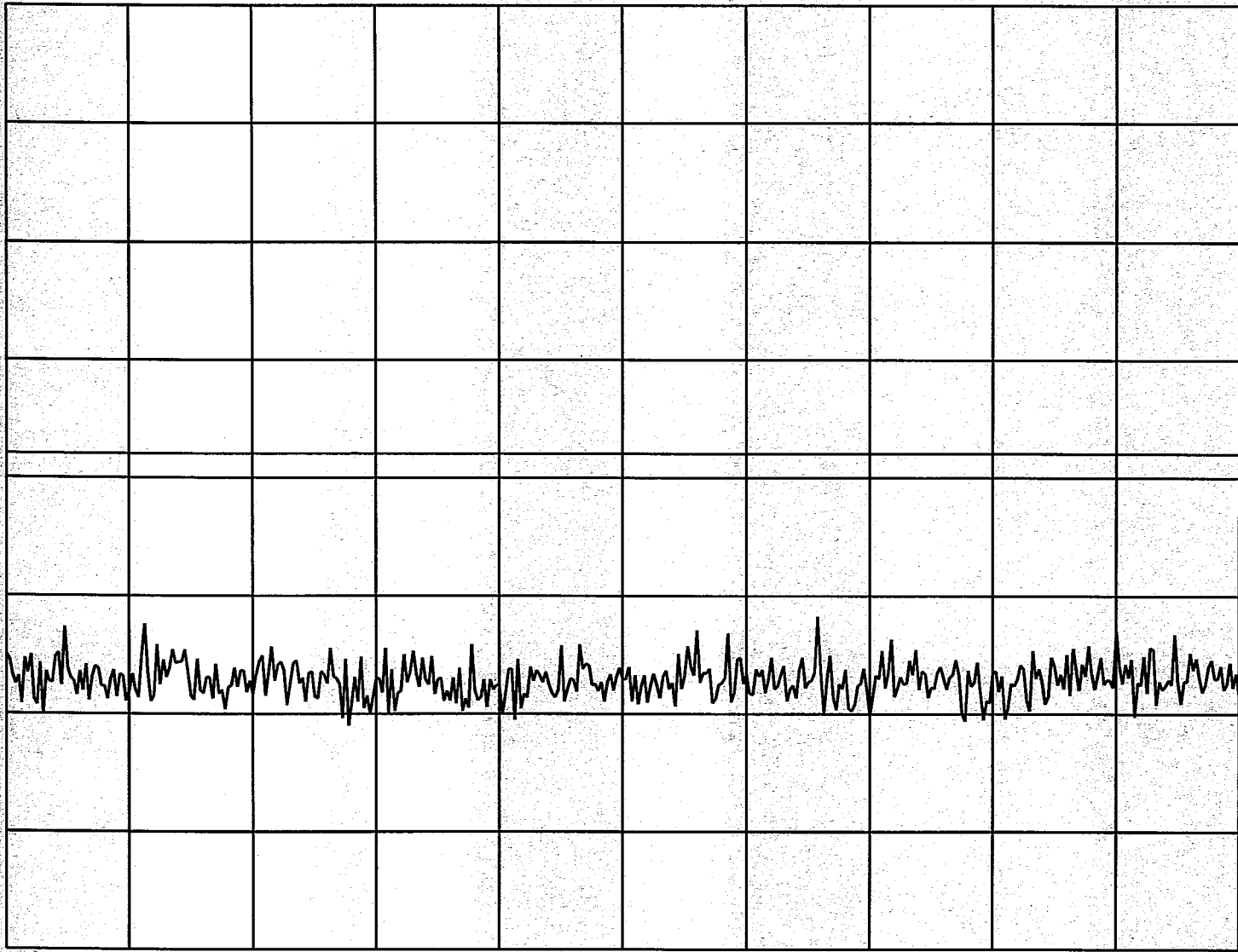
SWP 8.07 sec

CH 1013 CEUWA  
RX BAND VIEW  
RL3/R-FOH

12:26:39 JUL 20, 2001  
/P

REF -42.0 dBm #AT 0 dB

PEAK  
LOG  
10  
dB/  
DL  
-80.0  
dBm  
WA SB  
SC FC  
CORR



MARKER  
NORMAL

MARKER  
△

MARKER  
AMPTD

SELECT  
1 2 3 4

MARKER 1  
ON OFF

More  
1 of 3

CENTER 881.50 MHz  
#RES BW 30 kHz

#VBW 30 kHz

SPAN 25.00 MHz  
SWP 83.3 msec

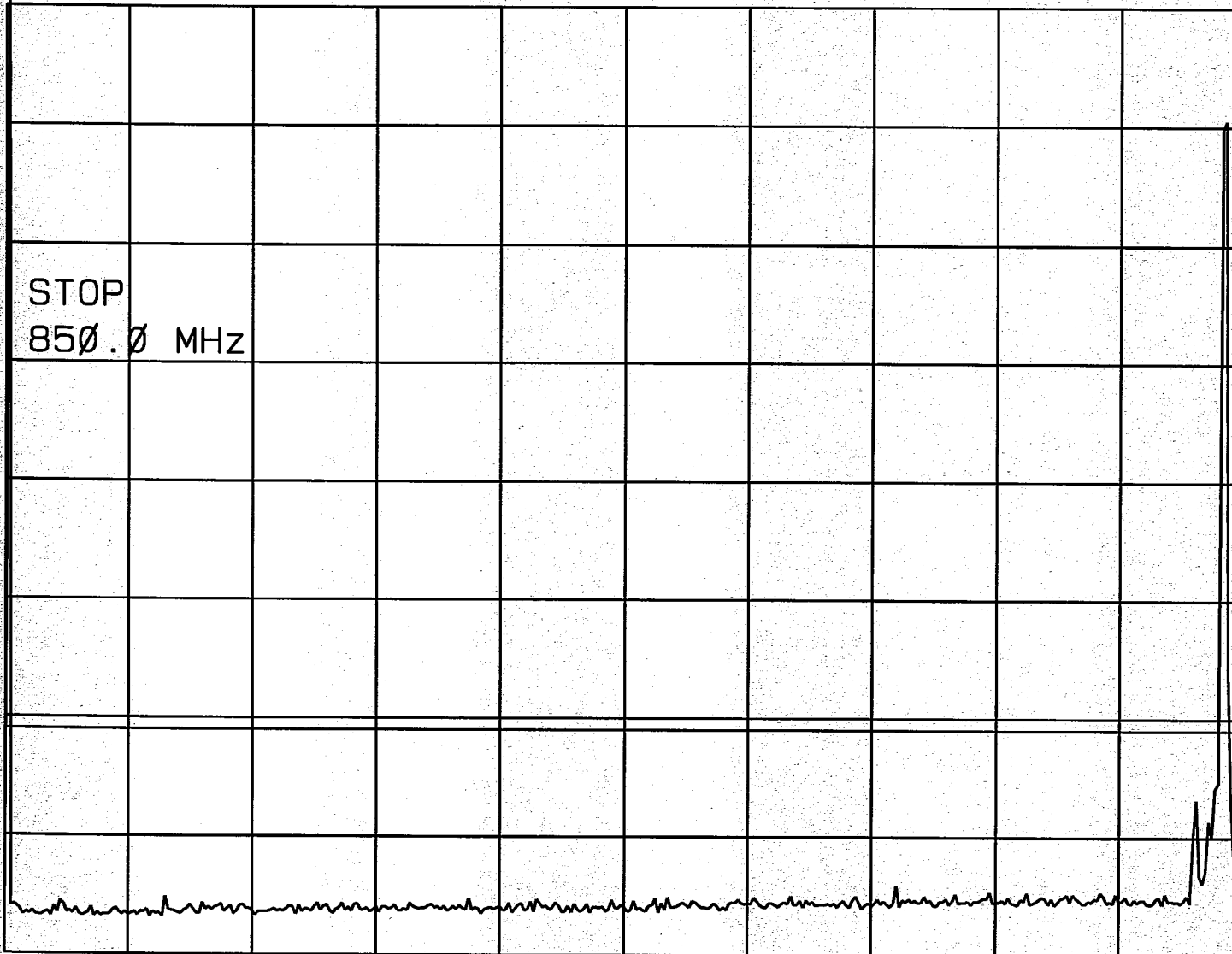
CH 394 CECCUM

0 Hz TO 850 MHz  
R3 / R-FCH

12: 45: 19 JUL 20, 2001

REF 24.2 dBm AT 20 dB

PEAK  
LOG  
10  
dB/  
OFFST  
20.0  
dB  
DL  
-36.8  
dBm



CENTER  
FREQ

START  
FREQ

STOP  
FREQ

CF STEP  
AUTO MAN

SWEEP  
LOG LIN

More  
1 of 2

START 0 Hz

#RES BW 30 kHz

#VBW 30 kHz

STOP 850.0 MHz

SWP 2.83 sec

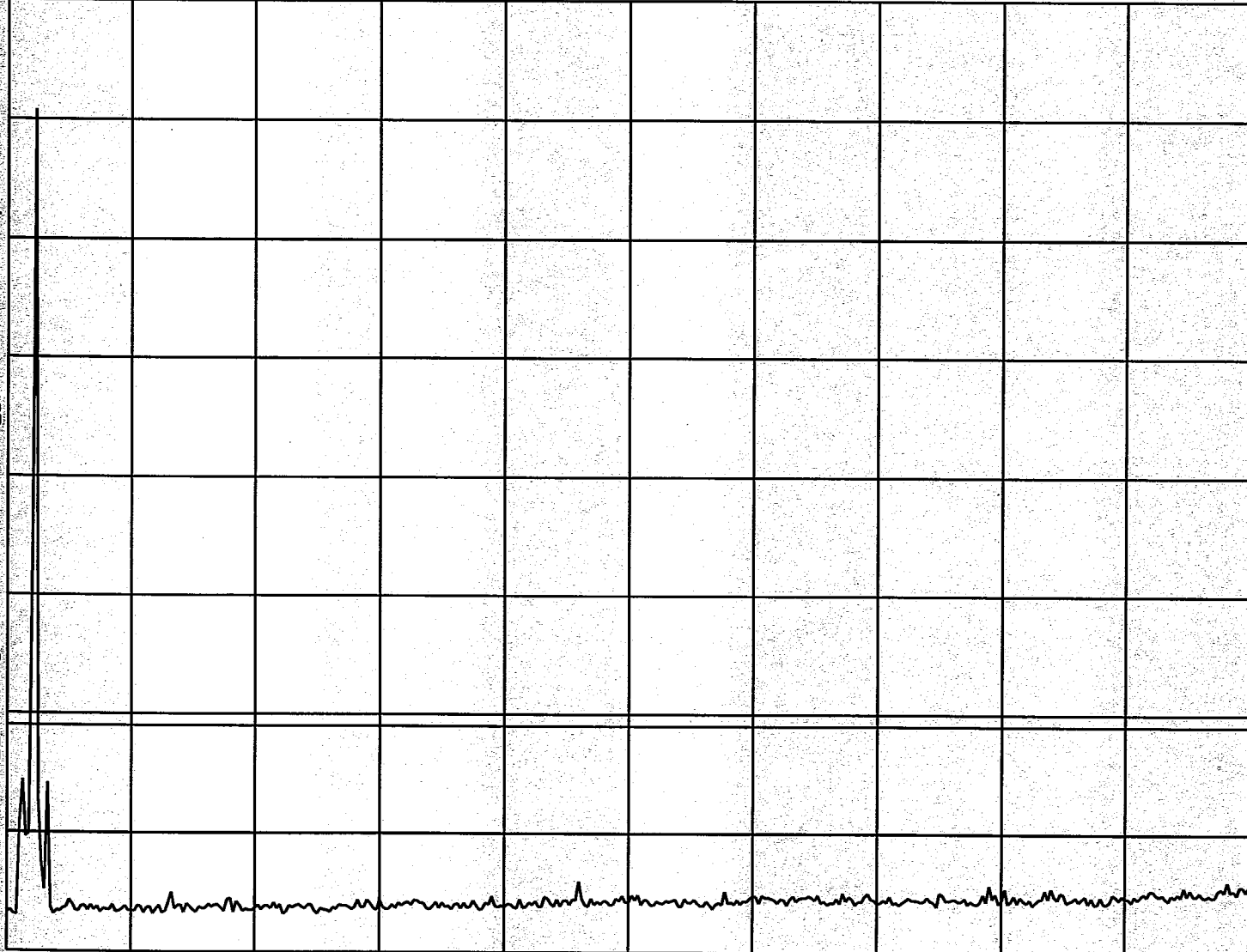
CH 384 CELLULAR  
800MHz to 2.7GHz  
PC3/R-FCIT

12:43:54 JUL 20, 2001  
~~17~~

REF 24.2 dBm AT 20 dB

PEAK  
LOG  
10  
dB/  
OFFST  
20.0  
dB  
DL  
-36.8  
dBm

WA SB  
SC FC  
CORR



MARKER NORMAL  
MARKER Δ  
MARKER AMPTD  
SELECT 1 2 3 4  
MARKER 1 ON OFF

More  
1 of 3

START 800 MHz

#RES BW 30 kHz

STOP 2.700 GHz

#VBW 30 kHz

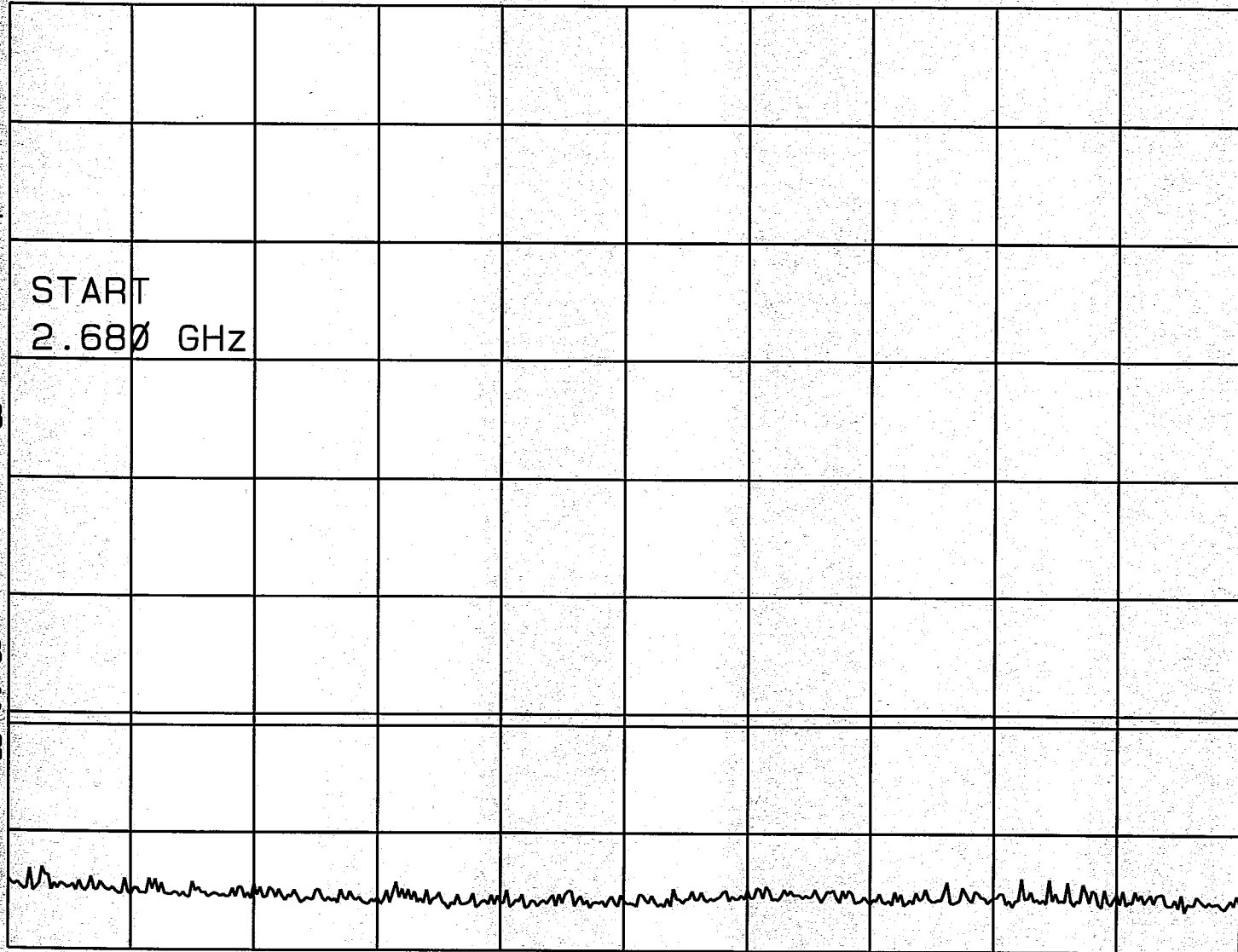
SWP 6.33 sec

CH 384 CELLULAR  
2.68GHZ TO 5.1GHZ  
PC3/E-FC17

12:43:26 JUL 20, 2001

REF 24.2 dBm AT 20 dB

PEAK  
LOG  
10  
dB/  
OFFST  
20.0  
dB  
DL  
-36.8  
dBm  
  
WA SB  
SC FC  
CORR



CENTER  
FREQ

START  
FREQ

STOP  
FREQ

CF STEP  
AUTO MAN

SWEEP  
LOG LIN

More  
1 of 2

START 2.680 GHz

STOP 5.100 GHz

#RES BW 30 kHz

#VBW 30 kHz

SWP 8.07 sec



CH 384 CELLULAR

RX BAND VIEW

RES / R-FCH

HP 12:23:10 JUL 20, 2001

REF -42.0 dBm #AT 0 dB

PEAK

LOG

10

dB/

DL

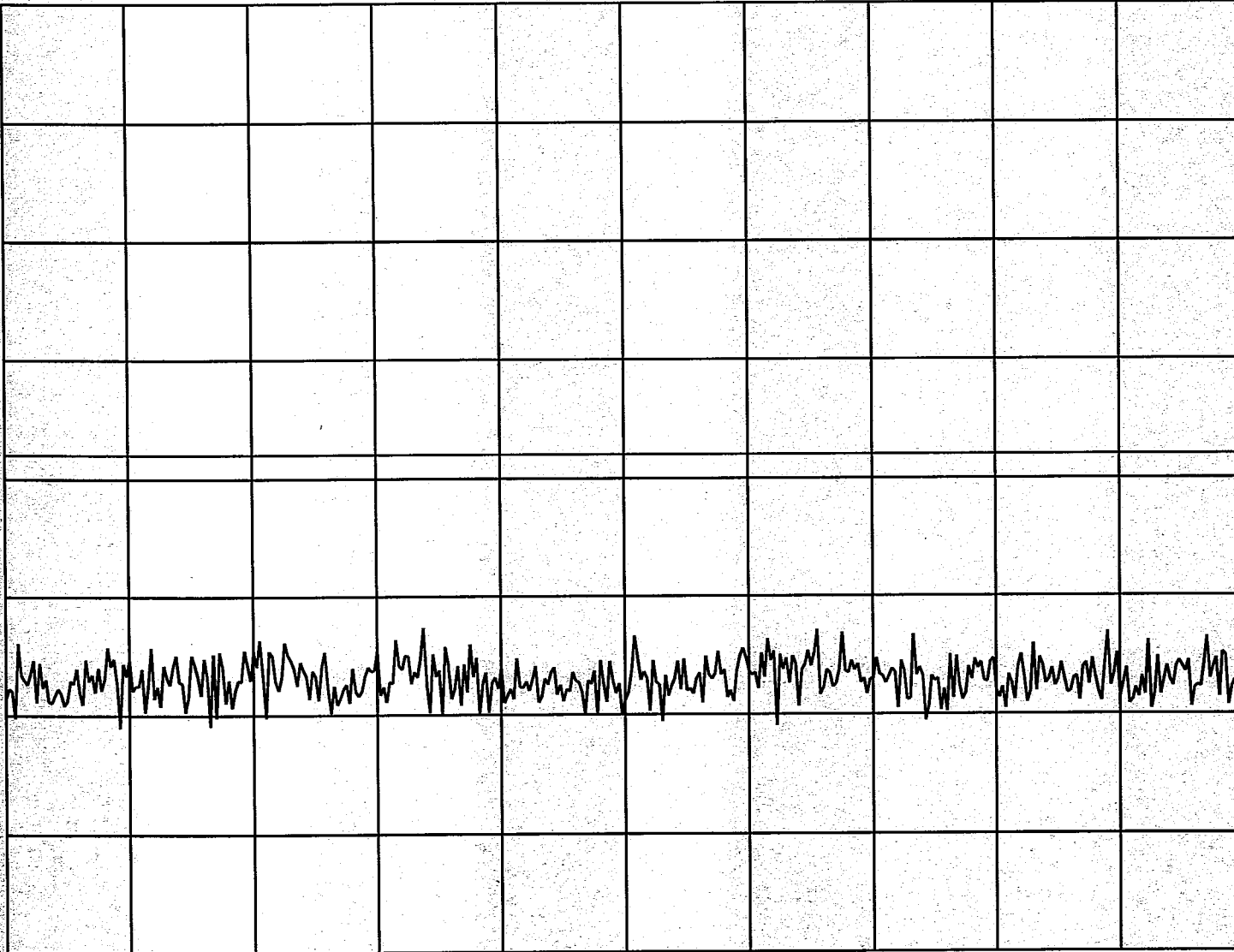
-80.0

dBm

WA SB

SC FC

CORR



MARKER  
NORMAL

MARKER  
△

MARKER  
AMPTD

SELECT  
1 2 3 4

MARKER 1  
ON OFF

More  
1 of 3

CENTER 881.50 MHz

#RES BW 30 kHz

#VBW 30 kHz

SPAN 25.00 MHz

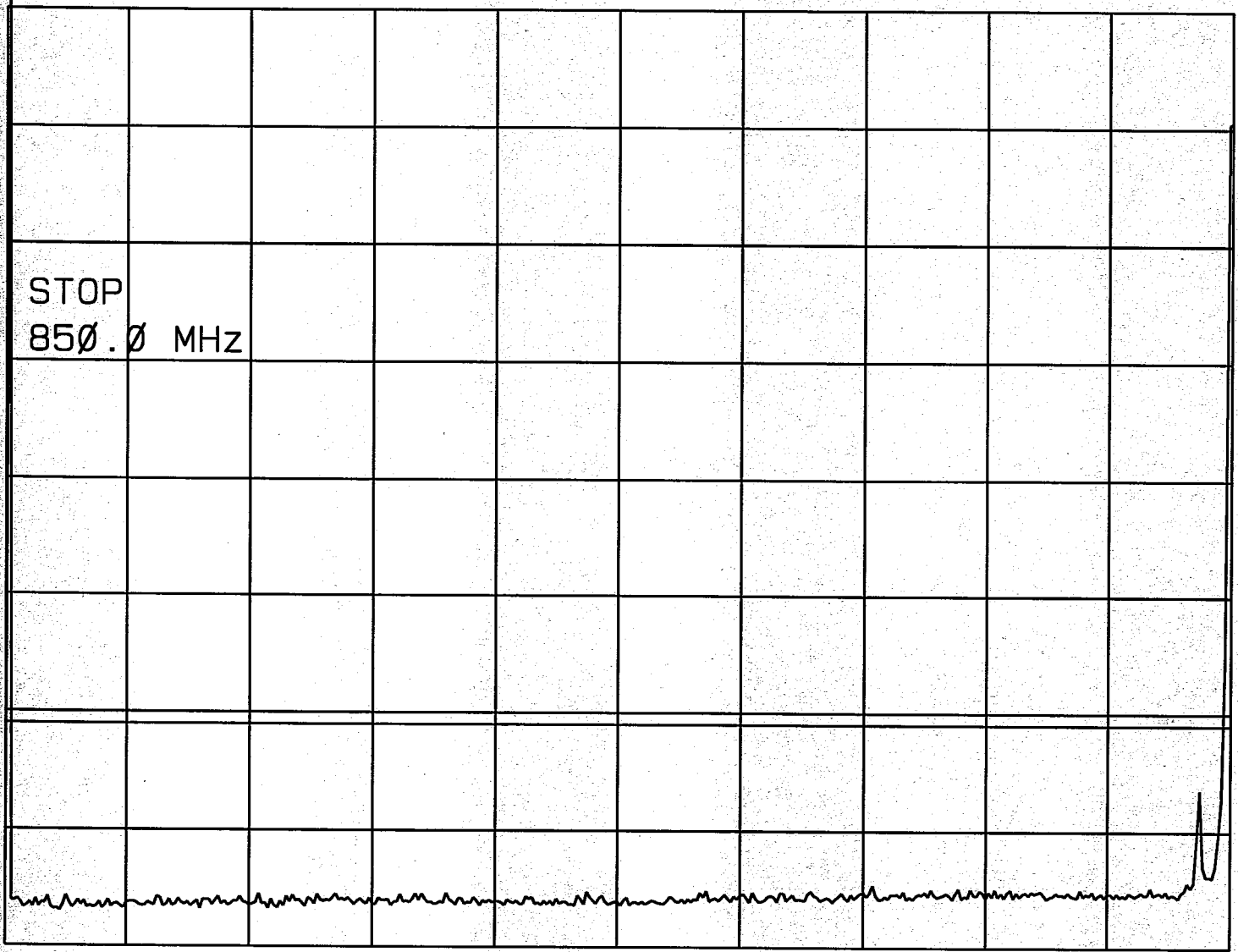
SWP 83.3 msec

CH 77 CELLULAR  
0Hz TO 850MHz  
RC3 / R-FC4

12:46:19 JUL 20, 2001

REF 24.2 dBm AT 20 dB

PEAK  
LOG  
10  
dB/  
OFFST  
20.0  
dB  
DL  
-36.8  
dBm



CENTER  
FREQ

START  
FREQ

STOP  
FREQ

CF STEP  
AUTO MAN

SWEEP  
LOG LIN

More  
1 of 2

START 0 Hz

#RES BW 30 kHz

#VBW 30 kHz

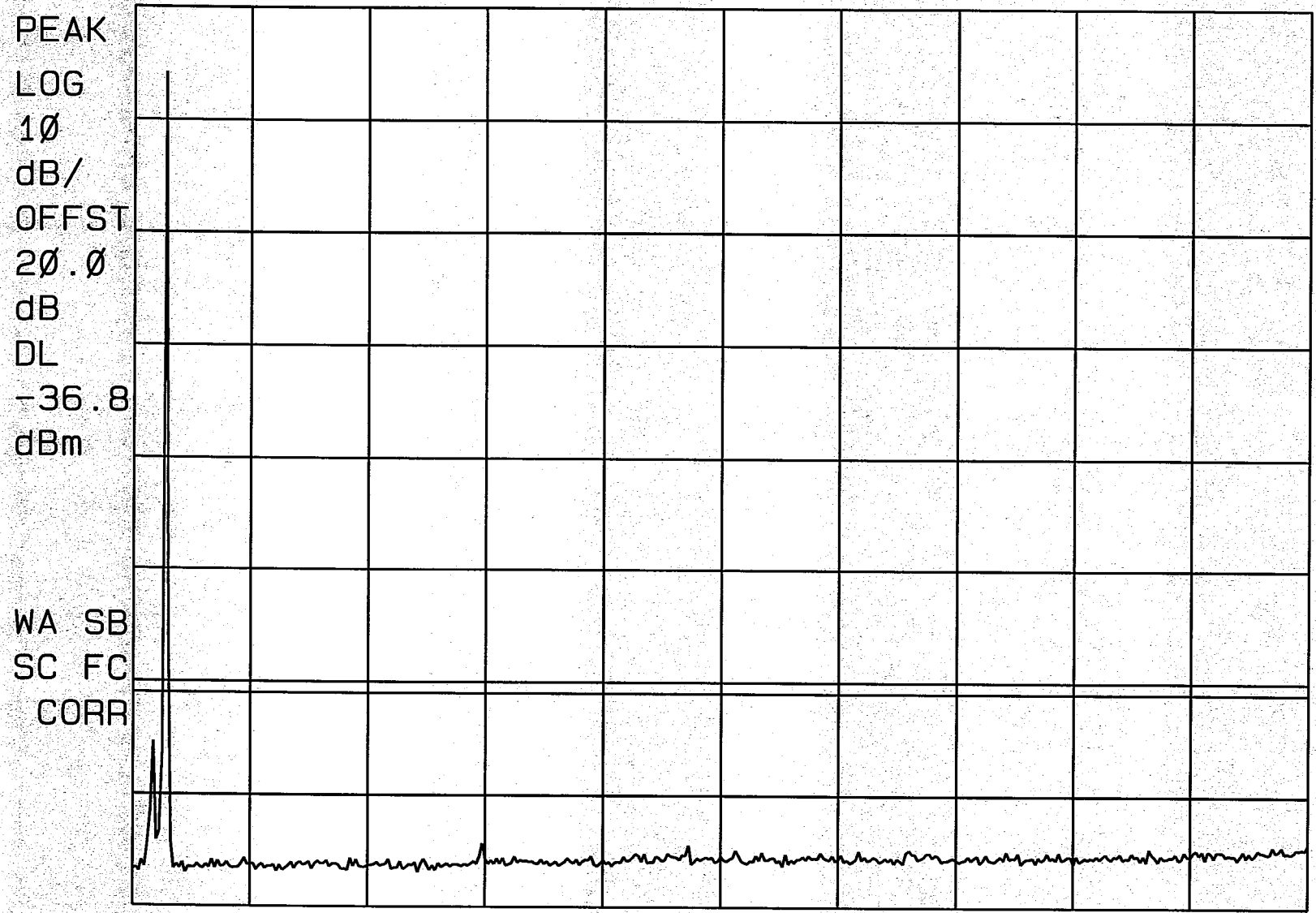
STOP 850.0 MHz

SWP 2.83 sec

CA 77 CELLULAR  
800MHz to 2.7GHz  
RCS / R-FCM

12:47:33 JUL 20, 2001  
HP

REF 24.2 dBm AT 20 dB



MARKER  
NORMAL

MARKER  
Δ

MARKER  
AMPTD

SELECT  
1 2 3 4

MARKER 1  
ON OFF

More  
1 of 3

START 800 MHz

STOP 2.700 GHz

#RES BW 30 kHz

#VBW 30 kHz

SWP 6.33 sec

CH 777 CELLULAR

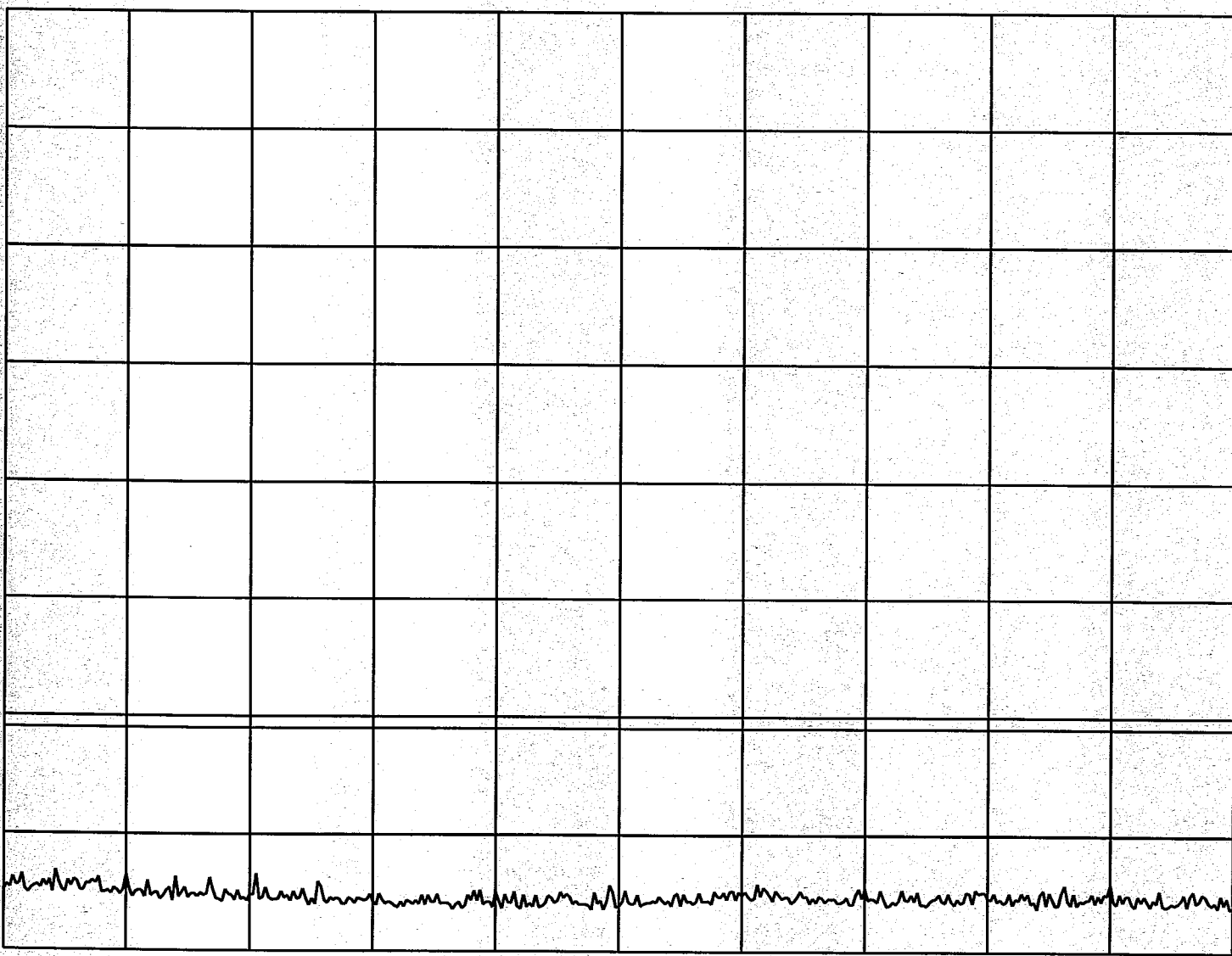
2.68GHz TO 5.1GHz

RC3 / R-FC14

12:48:54 JUL 20, 2001  
hp

REF 24.2 dBm AT 20 dB

PEAK  
LOG  
10  
dB/  
OFFST  
20.0  
dB  
DL  
-36.8  
dBm  
WA SB  
SC FC  
CORR



MARKER  
NORMAL

MARKER  
Δ

MARKER  
AMPTD

SELECT  
1 2 3 4

MARKER 1  
ON OFF

More  
1 of 3

START 2.680 GHz

STOP 5.100 GHz

#RES BW 30 kHz

#VBW 30 kHz

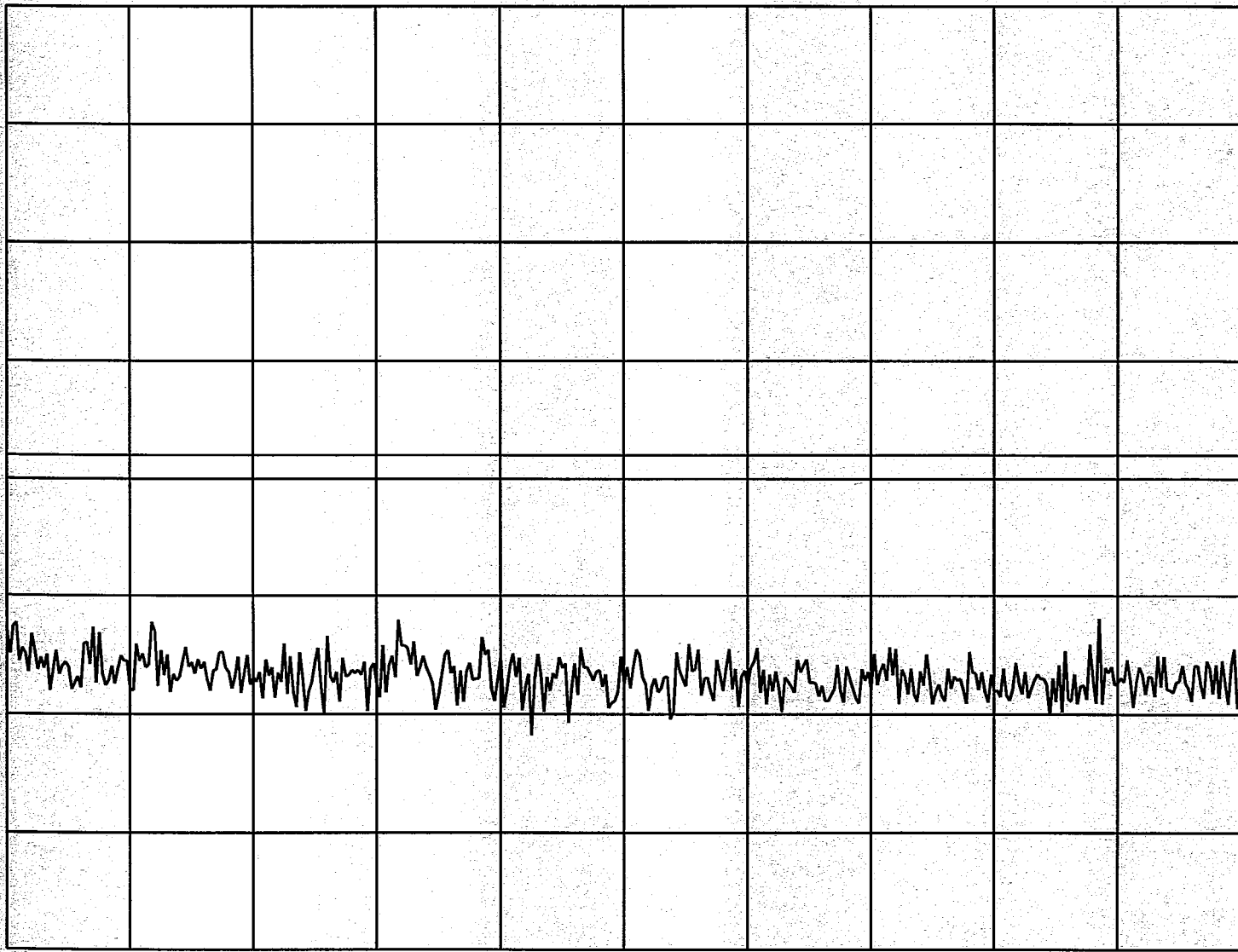
SWP 8.07 sec

CH 777 OEL.  
RX BND VIEW  
RC3/R-FCH

12:27:03 JUL 20, 2001

REF -42.0 dBm #AT 0 dB

PEAK  
LOG  
10  
dB/  
DL  
-80.0  
dBm  
WA SB  
SC FC  
CORR



MARKER  
NORMAL

MARKER  
△

MARKER  
AMPTD

SELECT  
1 2 3 4

MARKER 1  
ON OFF

More  
1 of 3

CENTER 881.50 MHz  
#RES BW 30 kHz

#VBW 30 kHz

SPAN 25.00 MHz  
SWP 83.3 msec

(b) RC3 R\_FCH+R\_SCH+PTxmax

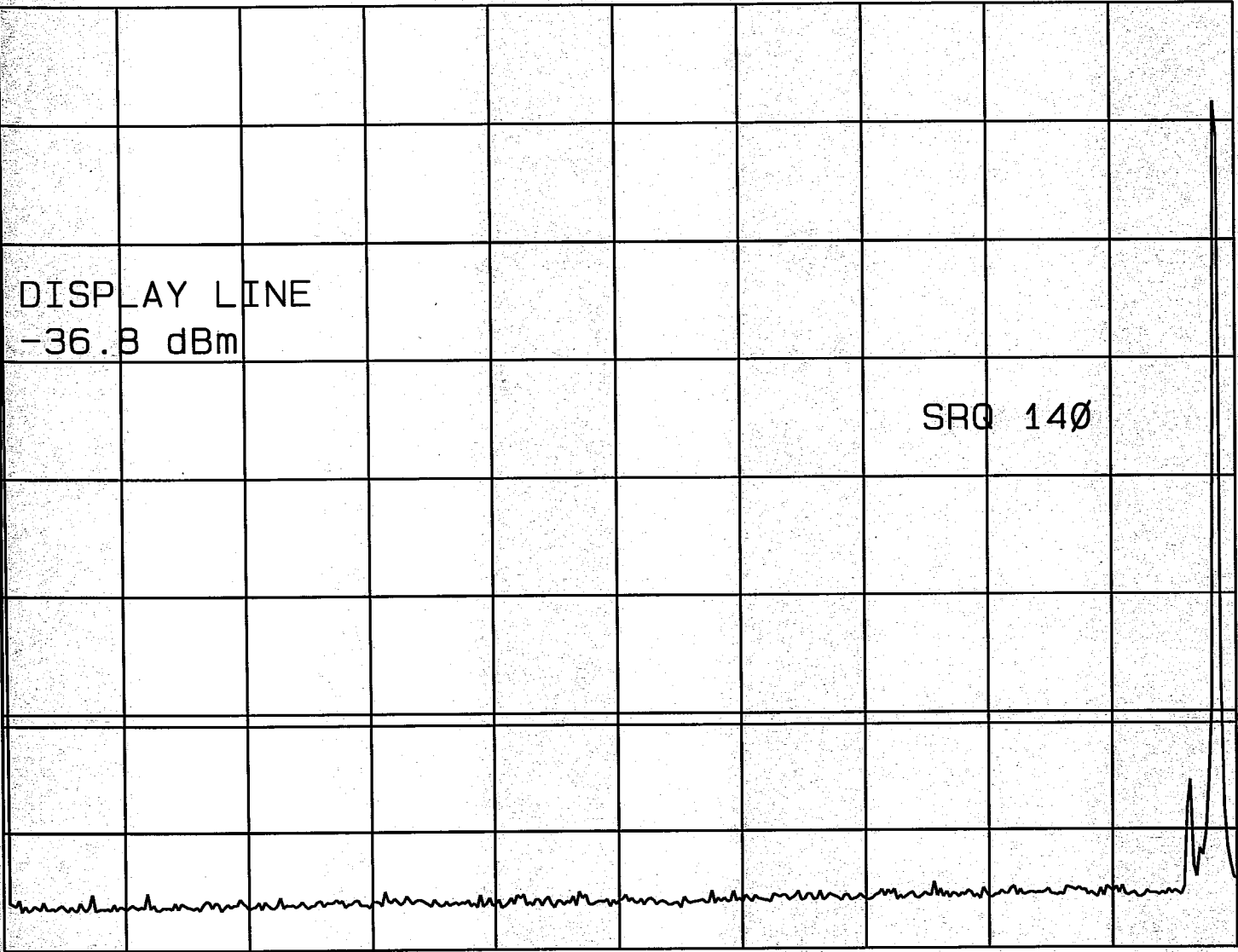
15:06:53 JUL 20, 2001  
hp

CH 384  
0 Hz TO 850 MHz  
R3 / R-FCH + R-SC14

REF 24.2 dBm #AT 20 dB

HOLD

PEAK  
LOG  
10  
dB/  
OFFST  
20.0  
dB  
DL  
-36.8  
dBm  
WA SB  
SC FC  
CORR



DSP LINE  
ON OFF

Change  
Title

Limit  
Lines

ANALOG+  
ON OFF

More  
1 of 2

START 0 Hz STOP 850.0 MHz  
#RES BW 30 kHz VBW 30 kHz SWP 2.83 sec

15:08:13 JUL 20, 2001  
hp

CH 384  
800MHz to 2.7GHz  
PC3 / R-FCH + R-SH

REF 24.2 dBm #AT 20 dB

PEAK  
LOG  
10  
dB/  
OFFST  
20.0  
dB  
DL  
-36.8  
dBm

MARKER  
NORMAL

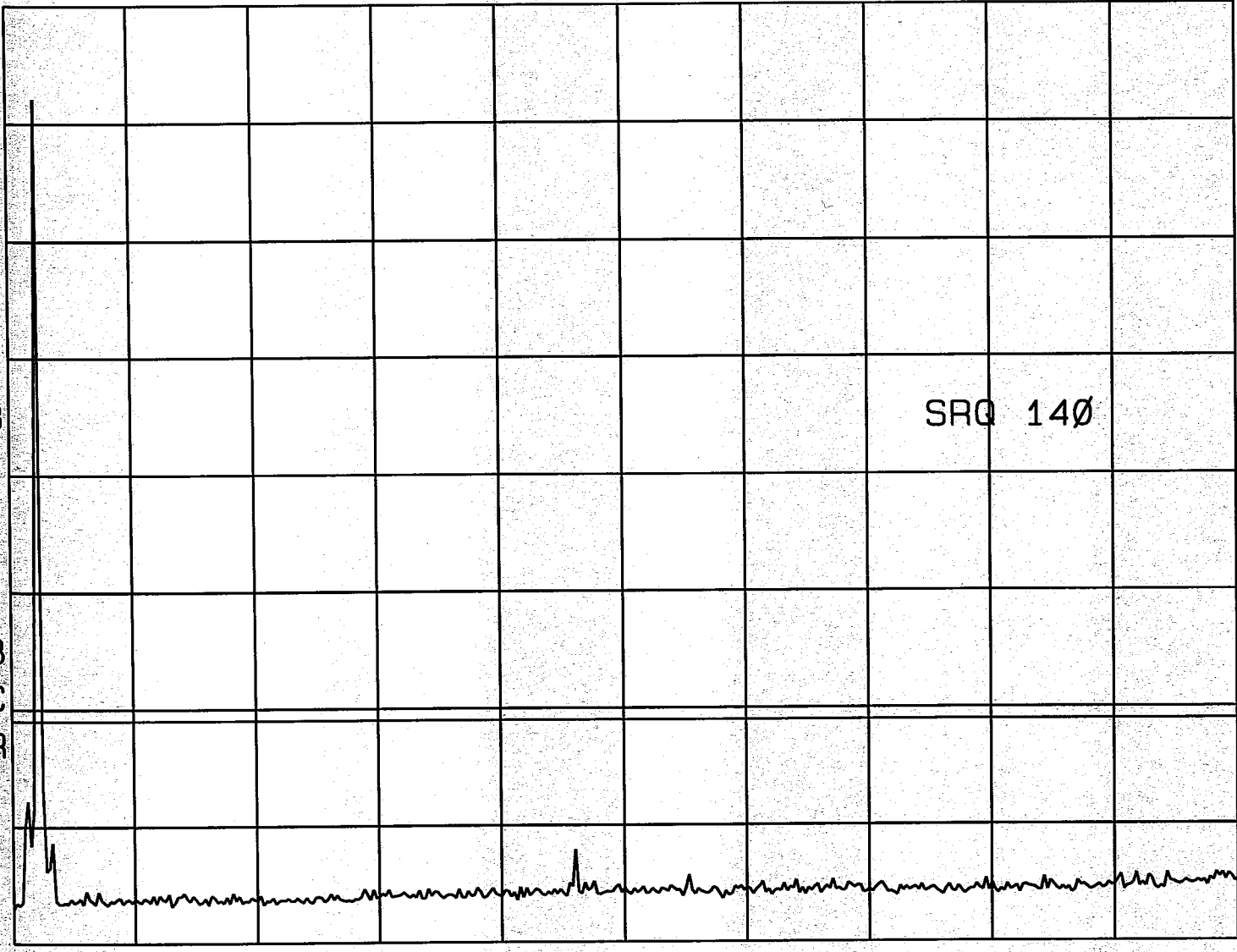
MARKER  
△

MARKER  
AMPTD

SELECT  
1 2 3 4

MARKER 1  
ON OFF

More  
1 of 3



START 800 MHz

STOP 2.700 GHz

#RES BW 30 kHz

VBW 30 kHz

SWP 6.33 sec

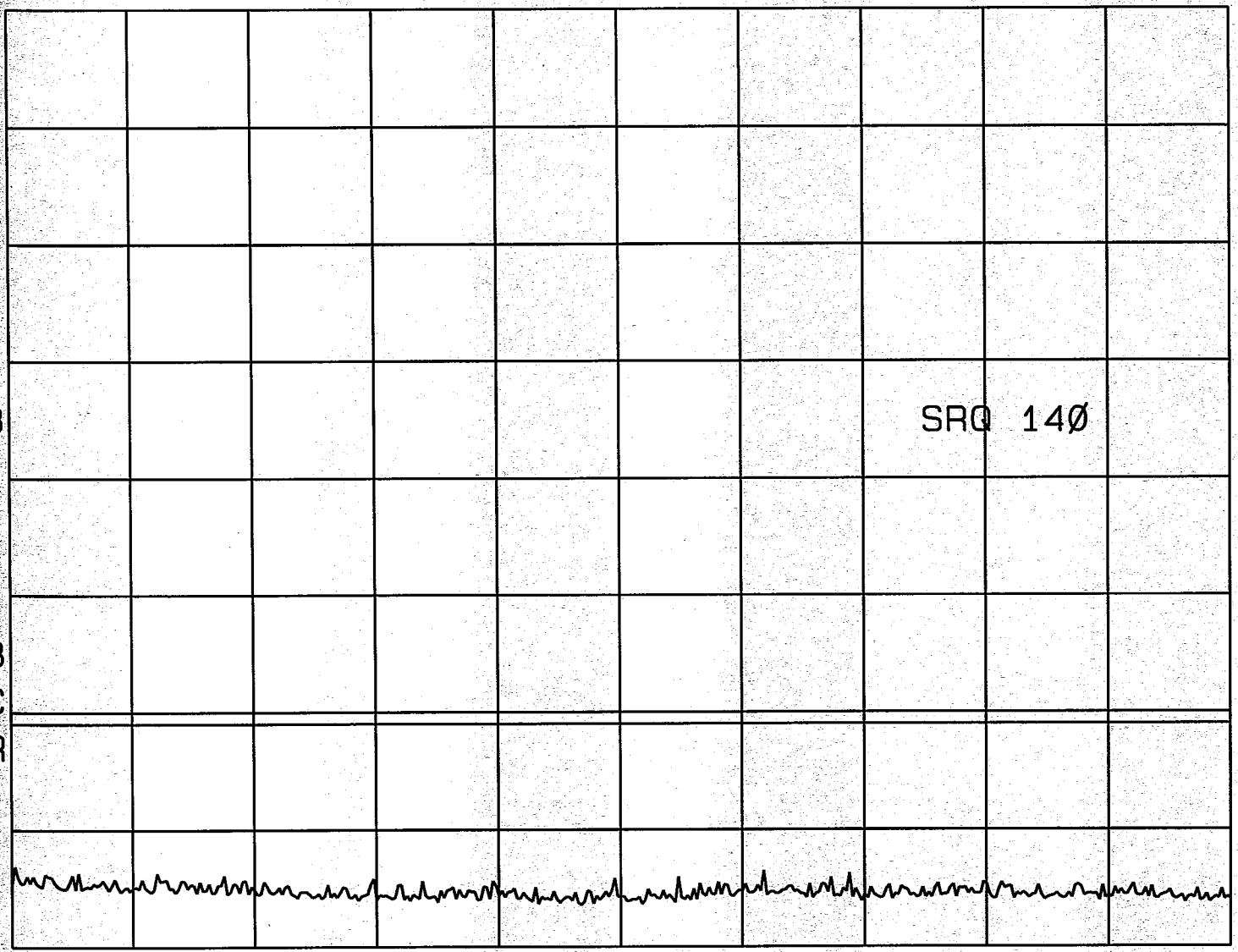


CH 384  
2.68GHz TO 5.1GHz  
PC3 / R-FCH + RESCH

15:08:50 JUL 20, 2001  
hp

REF 24.2 dBm #AT 20 dB

PEAK  
LOG  
10  
dB/  
OFFST  
20.0  
dB  
DL  
-36.8  
dBm  
  
WA SB  
SC FC  
CORR



MARKER  
NORMAL

MARKER  
△

MARKER  
AMPTD

SELECT  
1 2 3 4

MARKER 1  
ON OFF

More  
1 of 3

START 2.680 GHz

STOP 5.100 GHz

#RES BW 30 kHz

VBW 30 kHz

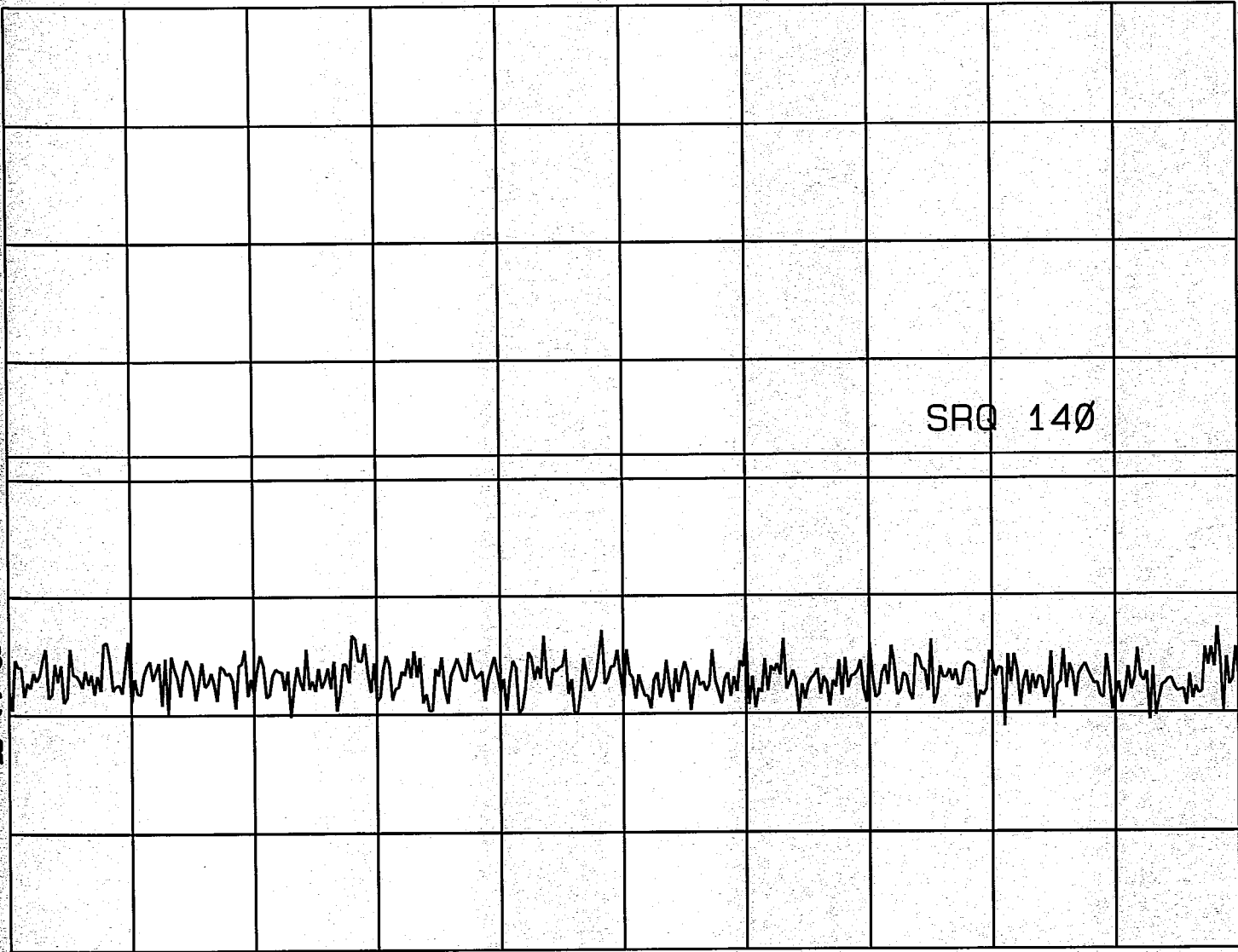
SWP 8.07 sec

15:12:02 JUL 20, 2001  
hp

CH 384  
PT BAND V.FEC  
RC3 / R-FCH + R-SCH

REF -42.0 dBm #AT 0 dB

PEAK  
LOG  
10  
dB/  
DL  
-80.0  
dBm  
WA SB  
SC FC  
CORR



MARKER  
NORMAL

MARKER  
△

MARKER  
AMPTD

SRQ 140

SELECT  
1 2 3 4

MARKER 1  
ON OFF

More  
1 of 3

CENTER 881.50 MHz  
#RES BW 30 kHz

VBW 30 kHz

SPAN 25.00 MHz  
SWP 83.3 msec