

Test Laboratory: KWC

C2PC K53-01 CDMA-1900 Flat with 15mm Air Space, 031910

Communication System: CDMA-1900, Frequency: 1880 MHz, Duty Cycle: 1:1
 Medium: M1900, Medium parameters used (interpolated): $f = 1880 \text{ MHz}$; $\sigma = 1.5 \text{ mho/m}$; $\epsilon_r = 52.4$; $\rho = 1000 \text{ kg/m}^3$
 Phantom: SAM 12, Phantom section: Flat Section

DASY4 Configuration:

Probe: ET3DV6 - SN1663, ConvF(4.52, 4.52, 4.52), Calibrated: 9/22/2008
 Sensor-Surface: 4mm (Mechanical Surface Detection),
 Electronics: DAE4 Sn675, Calibrated: 4/29/2009
 Measurement SW: DASY4, V4.7 Build 80
 Postprocessing SW: SEMCAD, V1.8 Build 186
Temperature: Room T = 21.8 +/- 1 deg C, Liquid T = 22.0 +/- 1 deg C

CDMA-1900 FLAT - Face Down Ch600, +SCH/Area Scan (71x111x1): Measurement grid: dx=15mm, dy=15mm

Maximum value of SAR (interpolated) = 0.520 mW/g

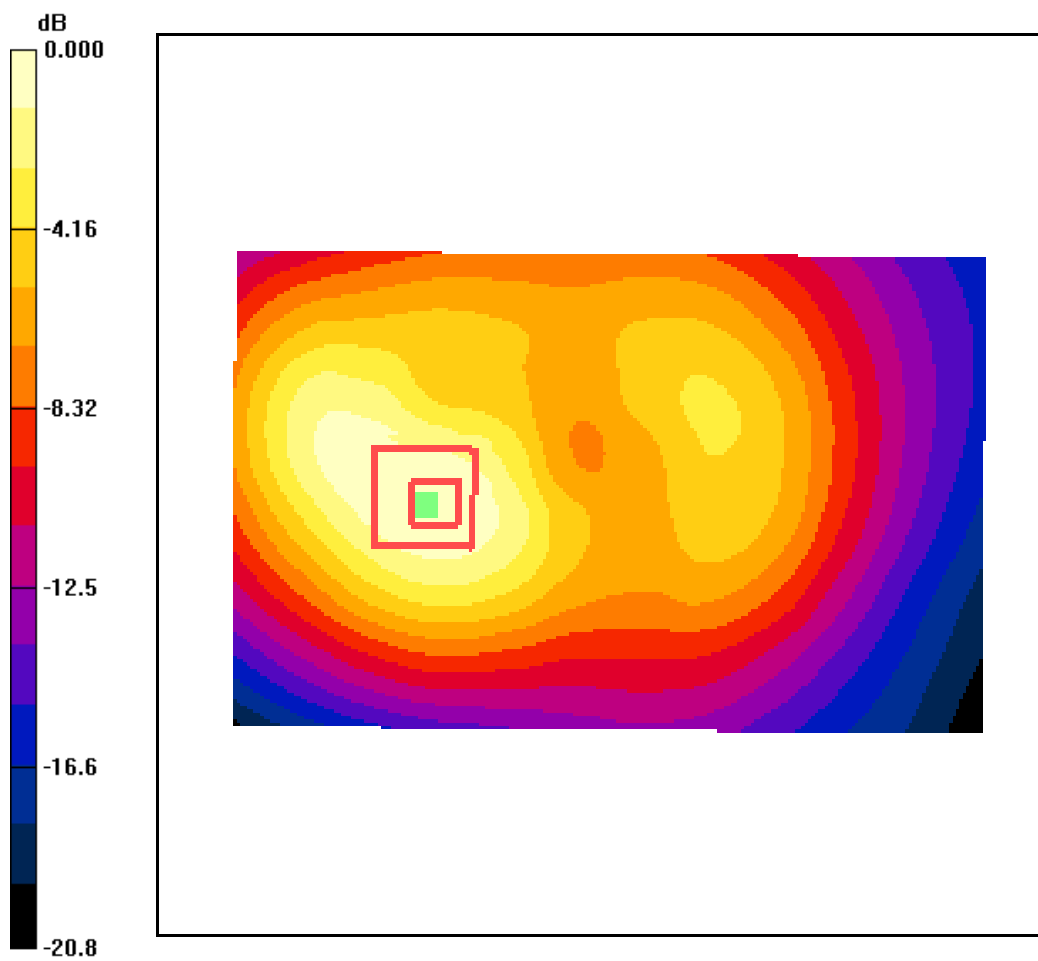
CDMA-1900 FLAT - Face Down Ch600, +SCH/Zoom Scan (7x7x7)/Cube 0: Measurement grid: dx=5mm, dy=5mm, dz=5mm

Reference Value = 9.19 V/m; Power Drift = 0.048 dB

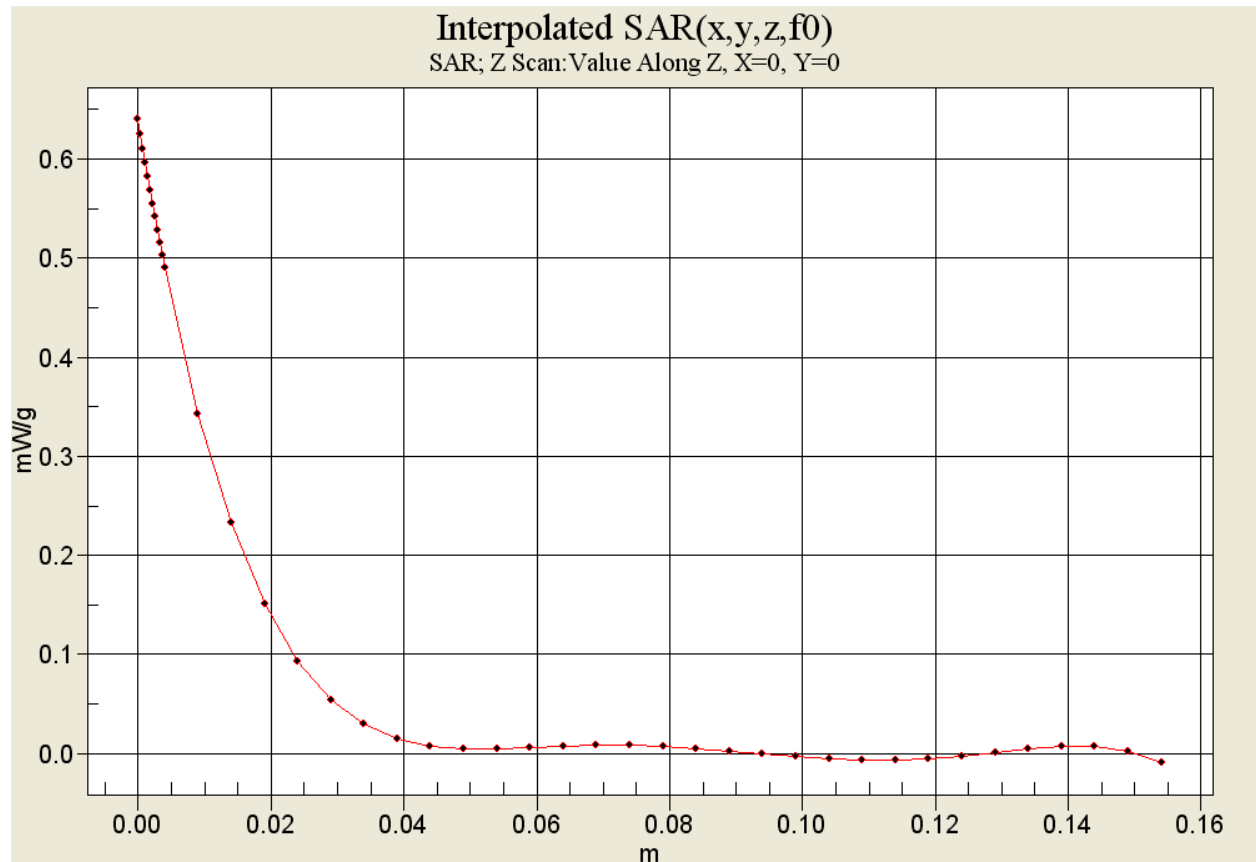
Peak SAR (extrapolated) = 0.760 W/kg

SAR(1 g) = 0.482 mW/g; SAR(10 g) = 0.300 mW/g

Maximum value of SAR (measured) = 0.520 mW/g



0 dB = 0.520mW/g



Test Laboratory: KWC

C2PC K53-01 CDMA-1900 Flat with 15mm Air Space, 031910

Communication System: CDMA-1900, Frequency: 1880 MHz, Duty Cycle: 1:1
 Medium: M1900, Medium parameters used (interpolated): $f = 1880$ MHz; $\sigma = 1.5$ mho/m; $\epsilon_r = 52.4$; $\rho = 1000$ kg/m³
 Phantom: SAM 12, Phantom section: Flat Section

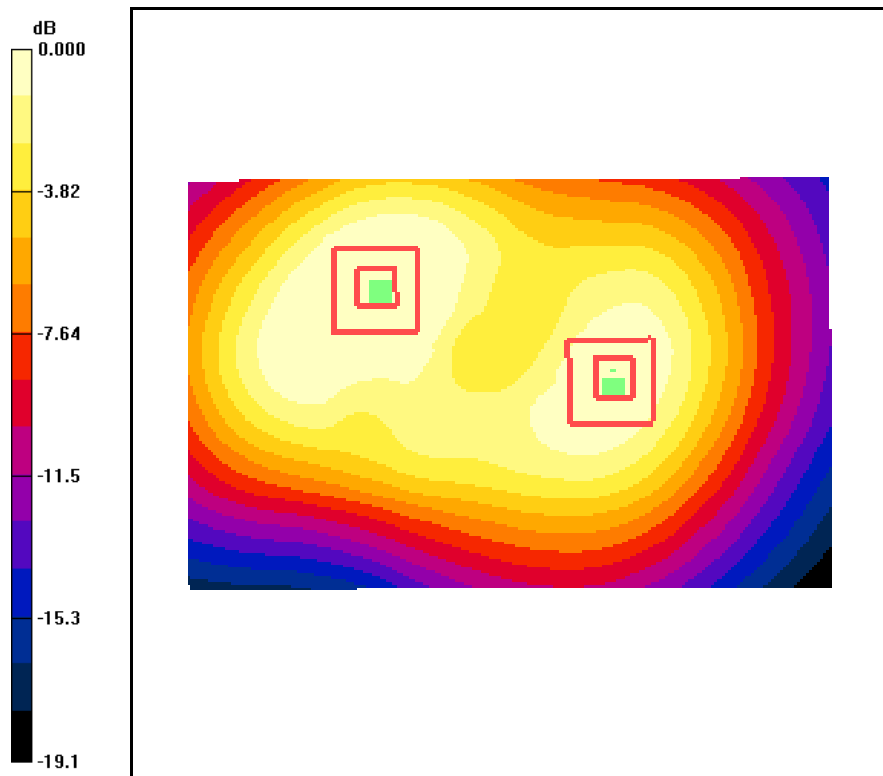
DASY4 Configuration:

Probe: ET3DV6 - SN1663, ConvF(4.52, 4.52, 4.52), Calibrated: 9/22/2008
 Sensor-Surface: 4mm (Mechanical Surface Detection),
 Electronics: DAE4 Sn675, Calibrated: 4/29/2009
 Measurement SW: DASY4, V4.7 Build 80
 Postprocessing SW: SEMCAD, V1.8 Build 186
Temperature: Room T = 21.8 +/- 1 deg C, Liquid T = 22.0 +/- 1 deg C

CDMA-1900 FLAT - Face Up Ch600, +F-SCH/Area Scan (71x111x1): Measurement grid: dx=15mm, dy=15mm
 Maximum value of SAR (interpolated) = 0.470 mW/g

CDMA-1900 FLAT - Face Up Ch600, +F-SCH/Zoom Scan (7x7x7)/Cube 0: Measurement grid: dx=5mm, dy=5mm, dz=5mm
 Reference Value = 10.8 V/m; Power Drift = 0.100 dB
 Peak SAR (extrapolated) = 0.730 W/kg
SAR(1 g) = 0.448 mW/g; SAR(10 g) = 0.275 mW/g
 Maximum value of SAR (measured) = 0.479 mW/g

CDMA-1900 FLAT - Face Up Ch600, +F-SCH/Zoom Scan (7x7x7)/Cube 1: Measurement grid: dx=5mm, dy=5mm, dz=5mm
 Reference Value = 10.8 V/m; Power Drift = 0.100 dB
 Peak SAR (extrapolated) = 0.438 W/kg
SAR(1 g) = 0.297 mW/g; SAR(10 g) = 0.197 mW/g
 Maximum value of SAR (measured) = 0.318 mW/g



0 dB = 0.318mW/g