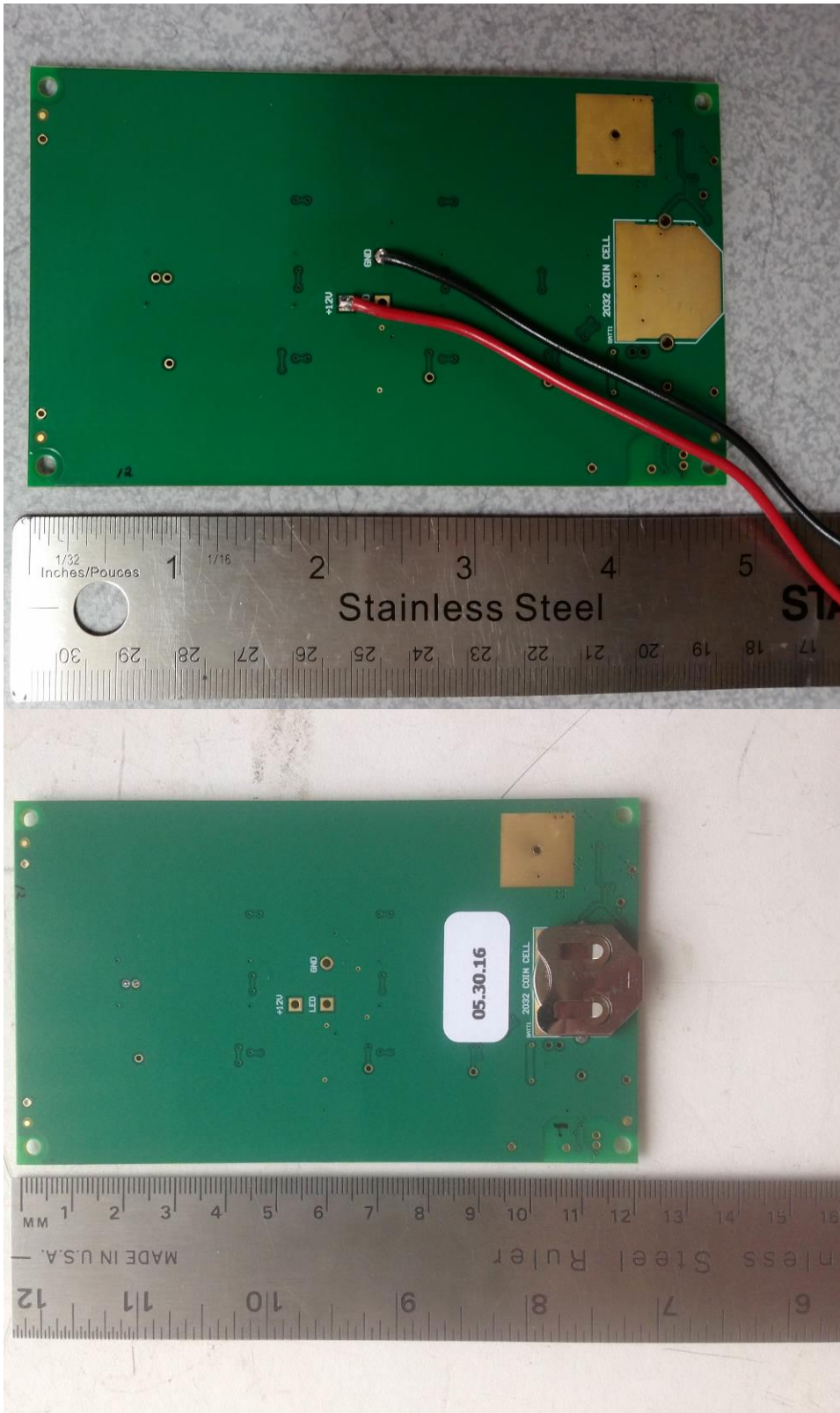


Internal Photos

FCC ID: OV9BSSPZZFP IC ID: 10245A-BSSPZZFP

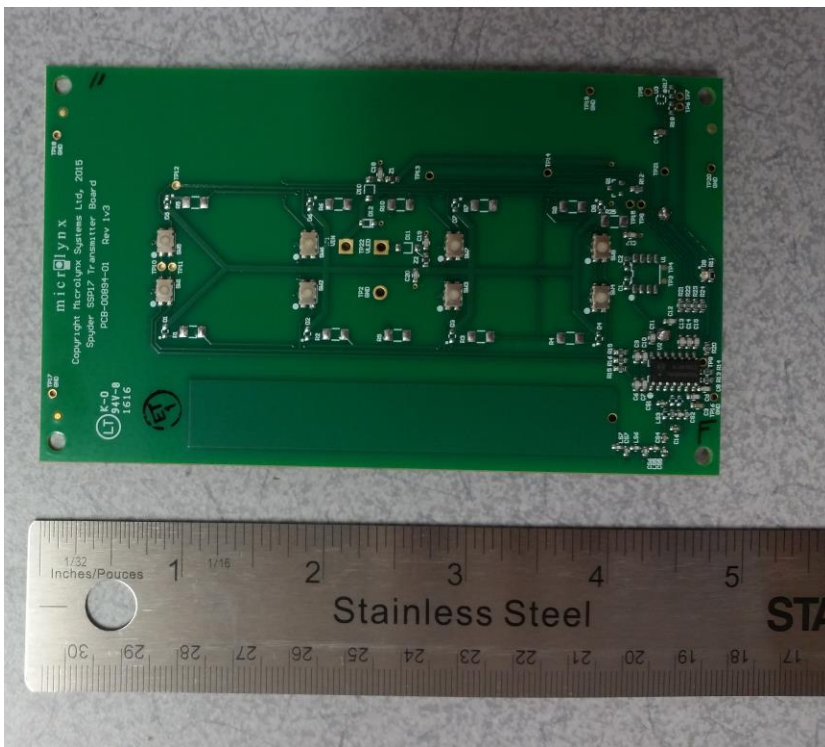
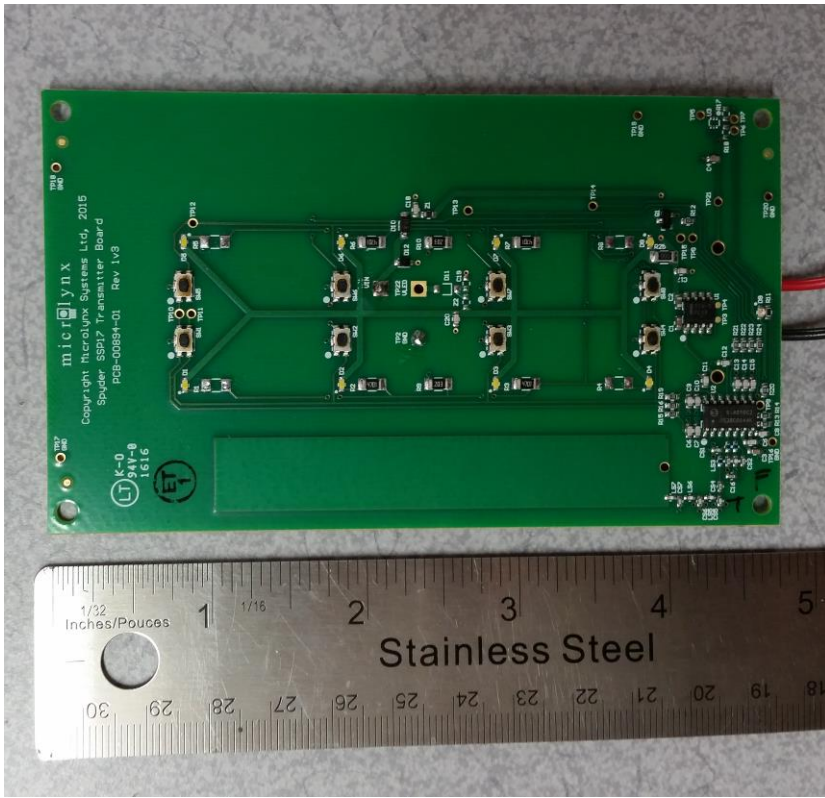
Internal Back (top: 12VDC variant, bottom: battery variant):



Internal Photos

FCC ID: OV9BSSPZZFP IC ID: 10245A-BSSPZZFP

Internal Front (top: 12VDC variant, bottom: battery variant):



Note: Both devices use the same circuit board. The Battery version is not fully populated.