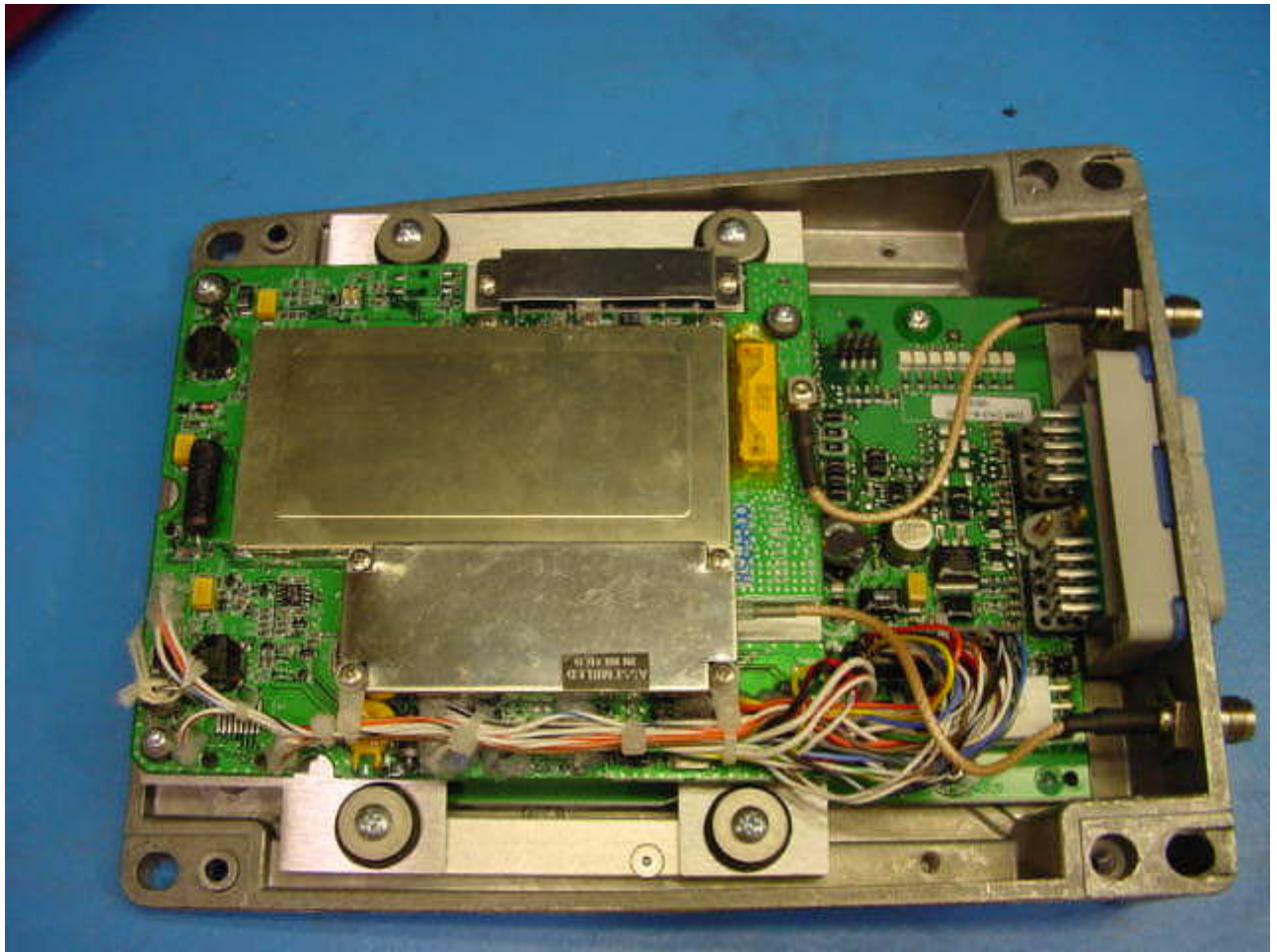
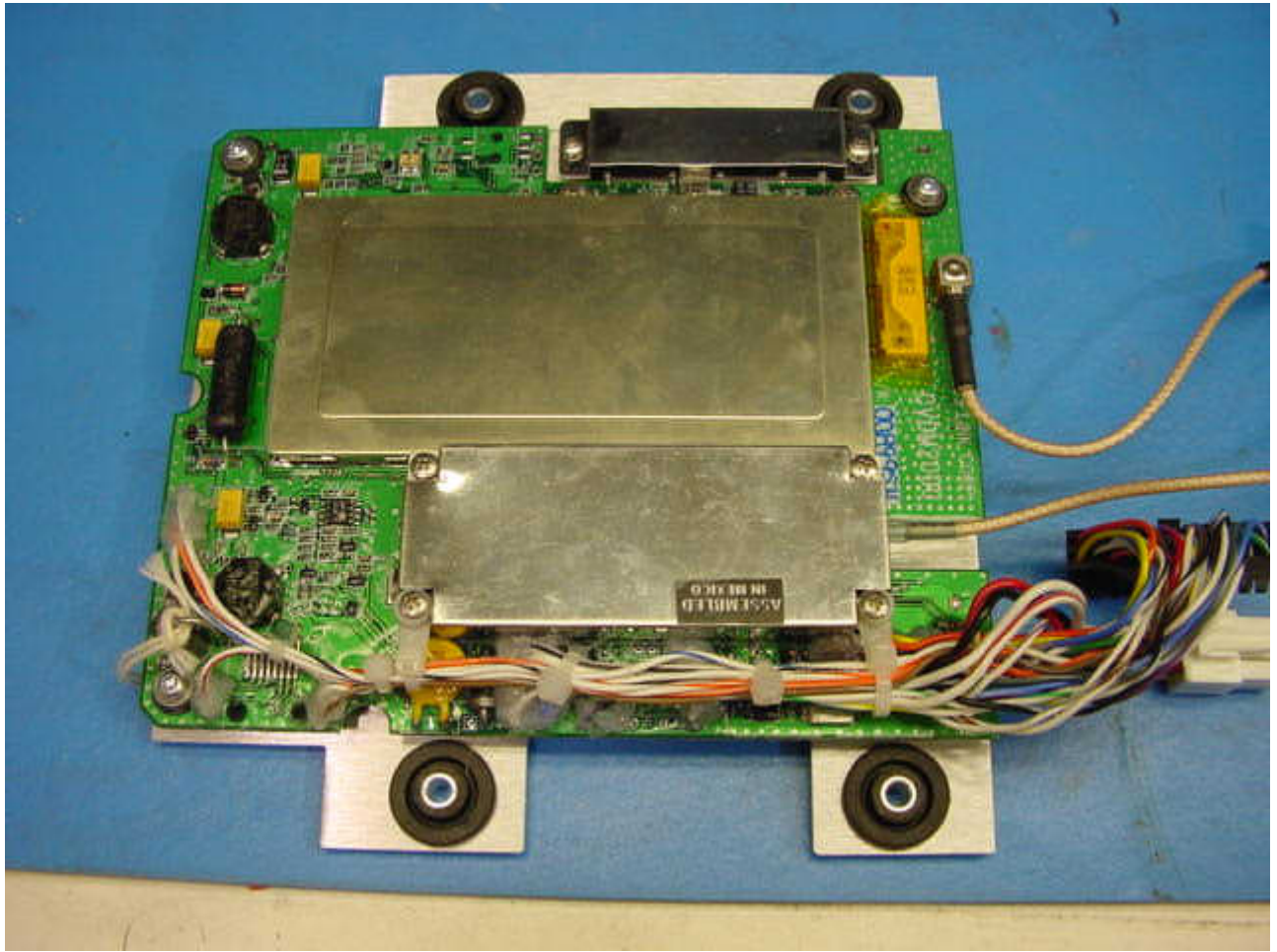


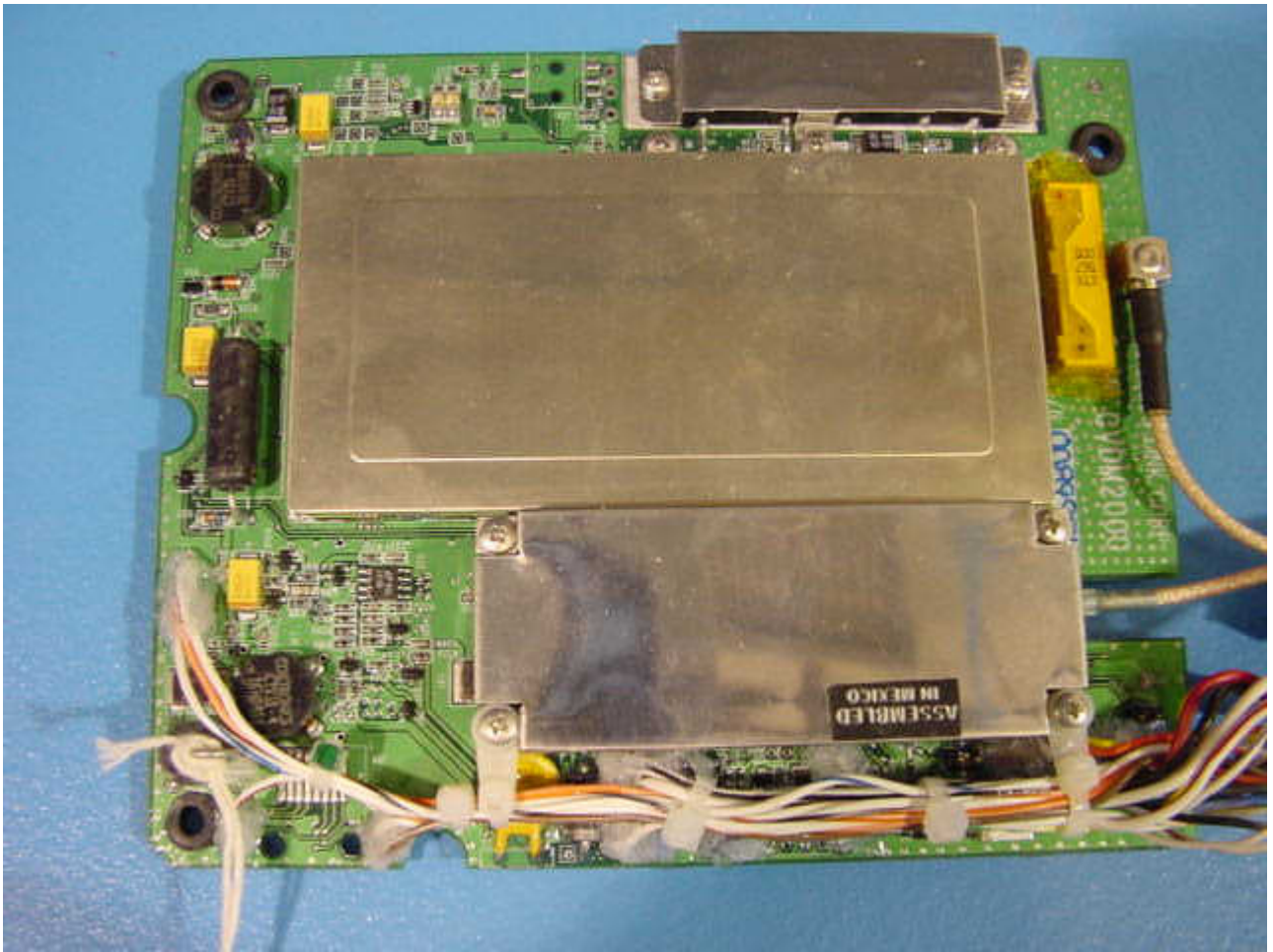
DeereTrax with top half of enclosure removed



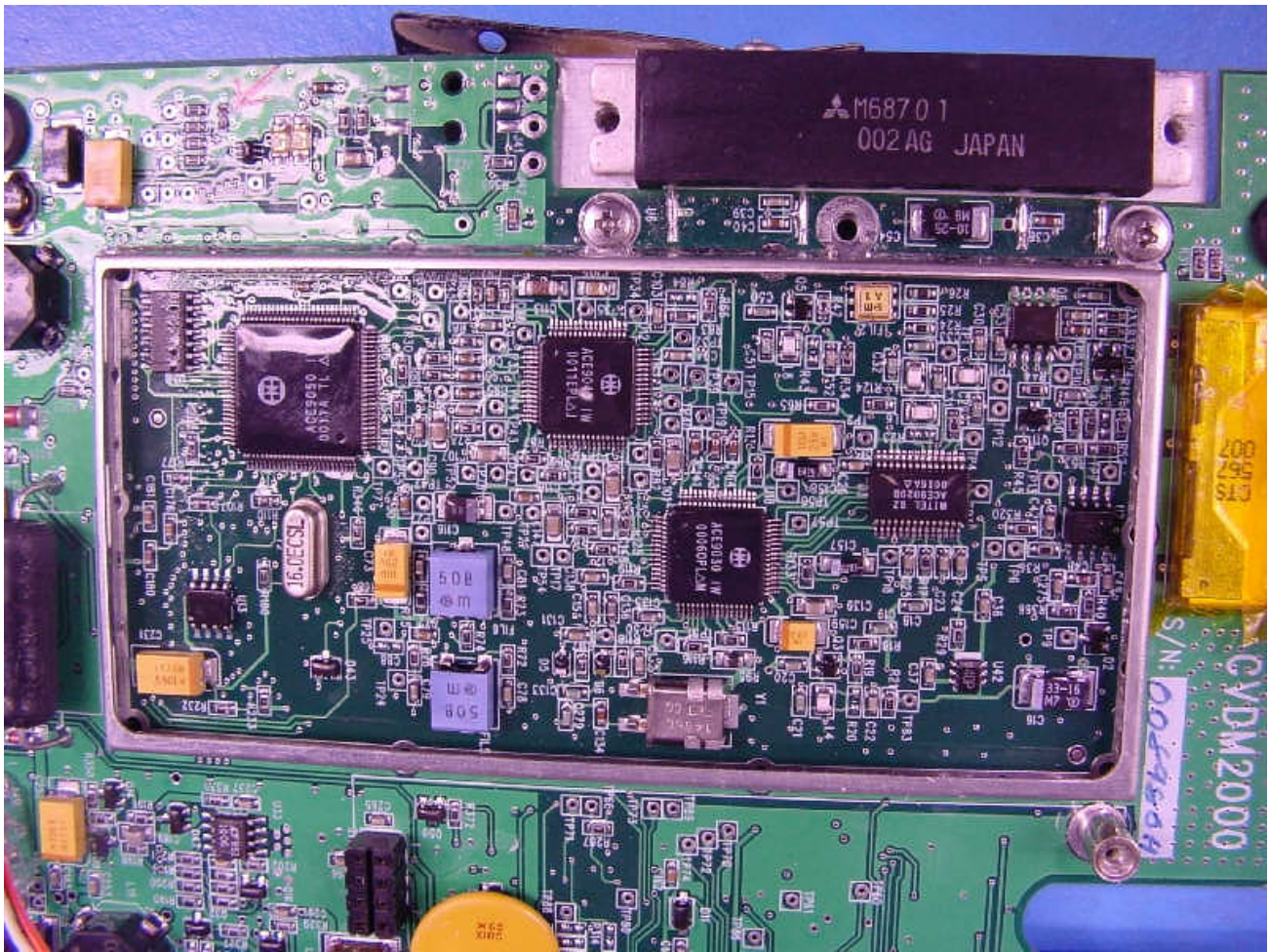
D in with top half of enclosure removed



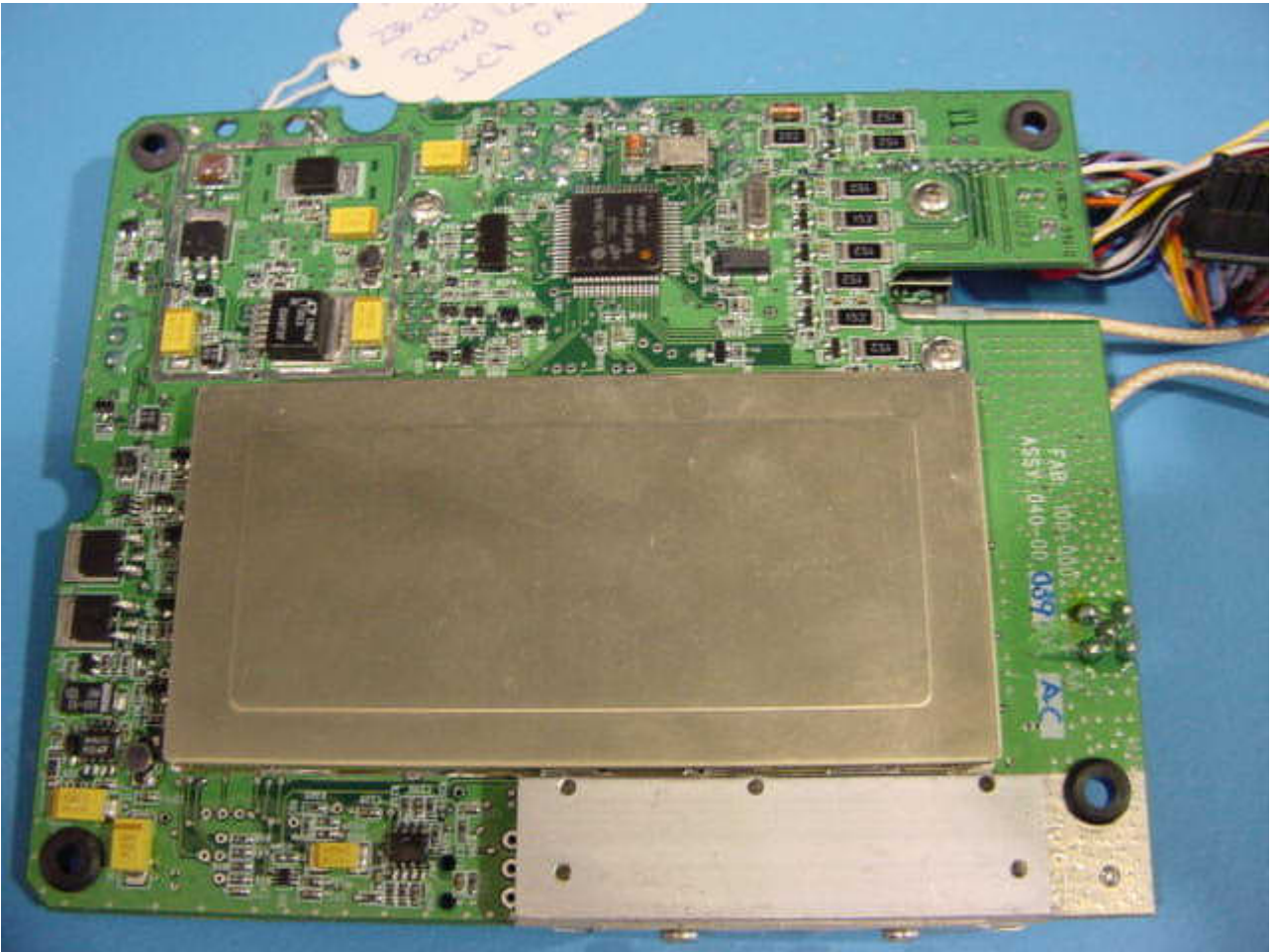
Communications Interface (Modem & GPS) PCB assembly with mounting plate



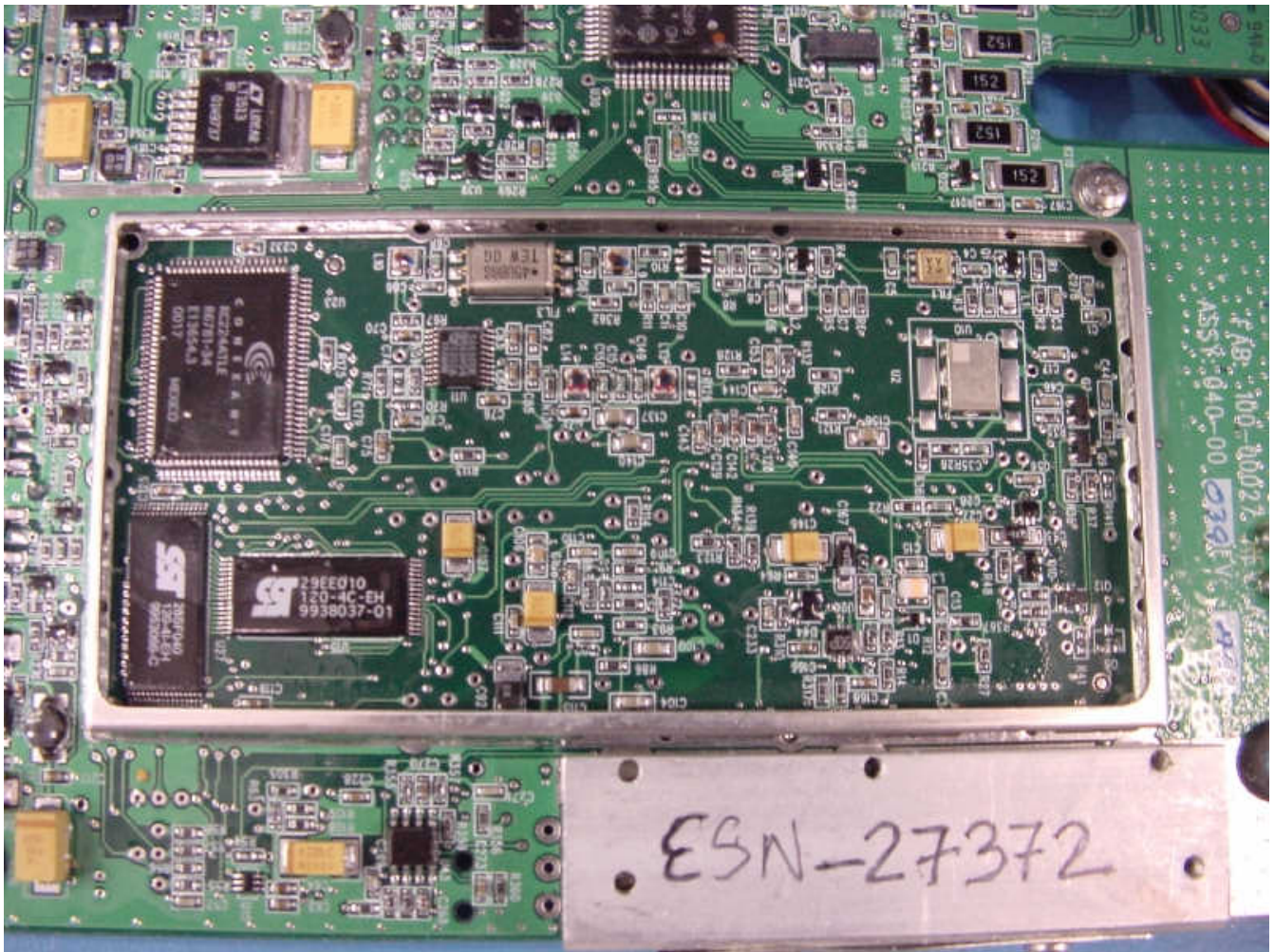
Communications Interface PCB assembly (top)



Communications Interface PCB with RF shields removed (top)



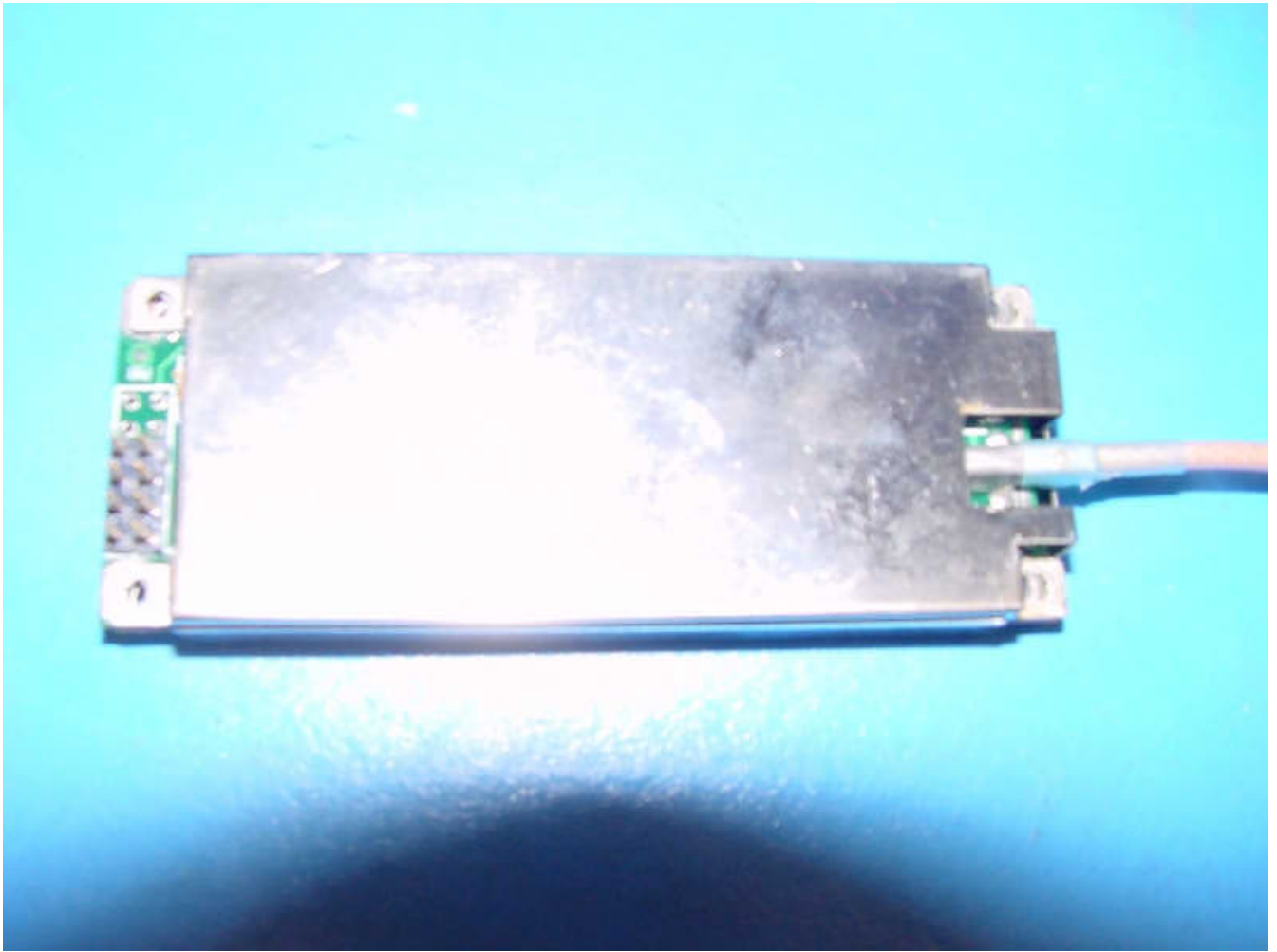
Communications Interface PCB assembly (bottom)



Communications Interface PCB with RF shield removed (bottom)



GPS module (top)



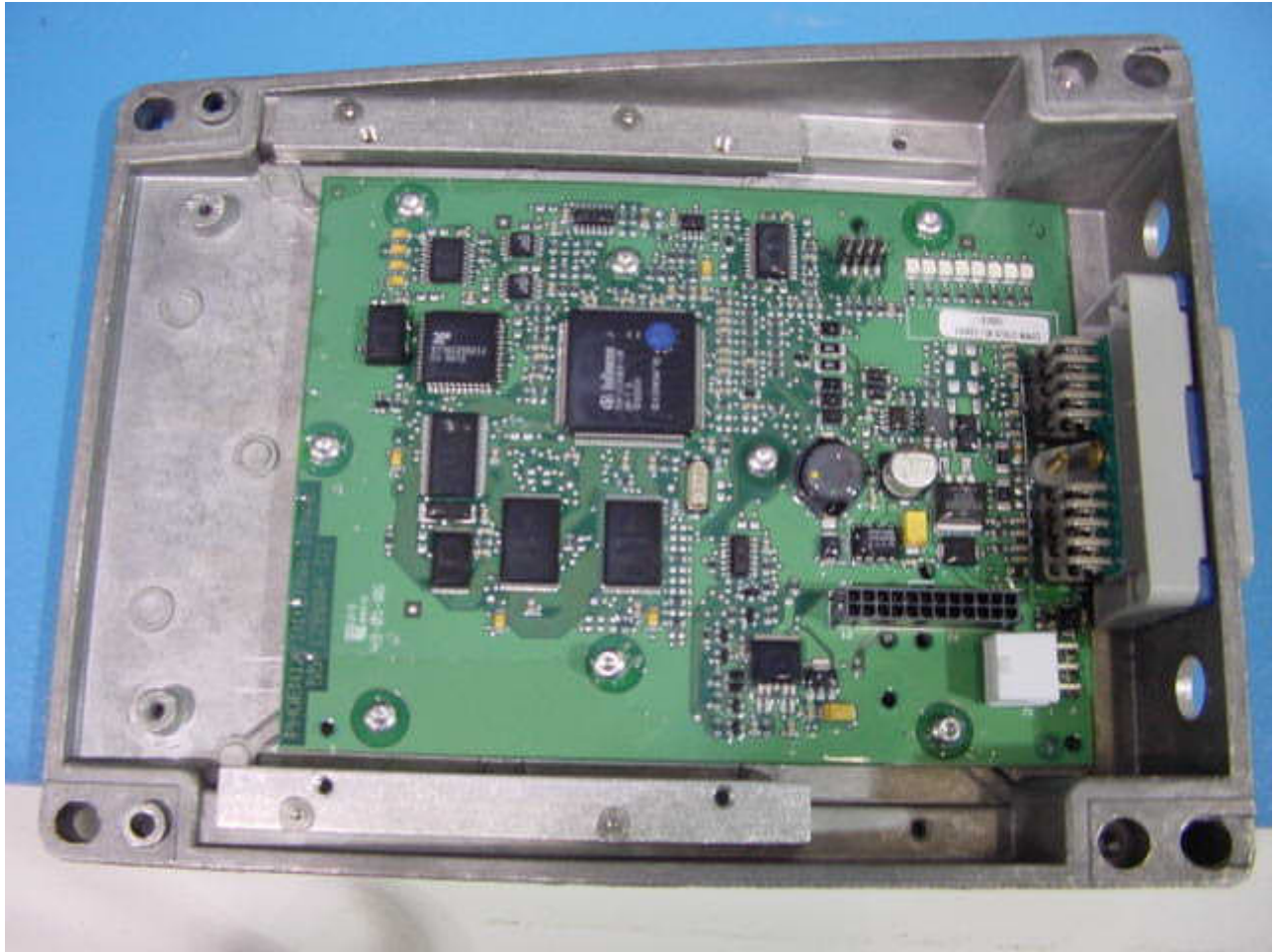
GPS module (bottom)



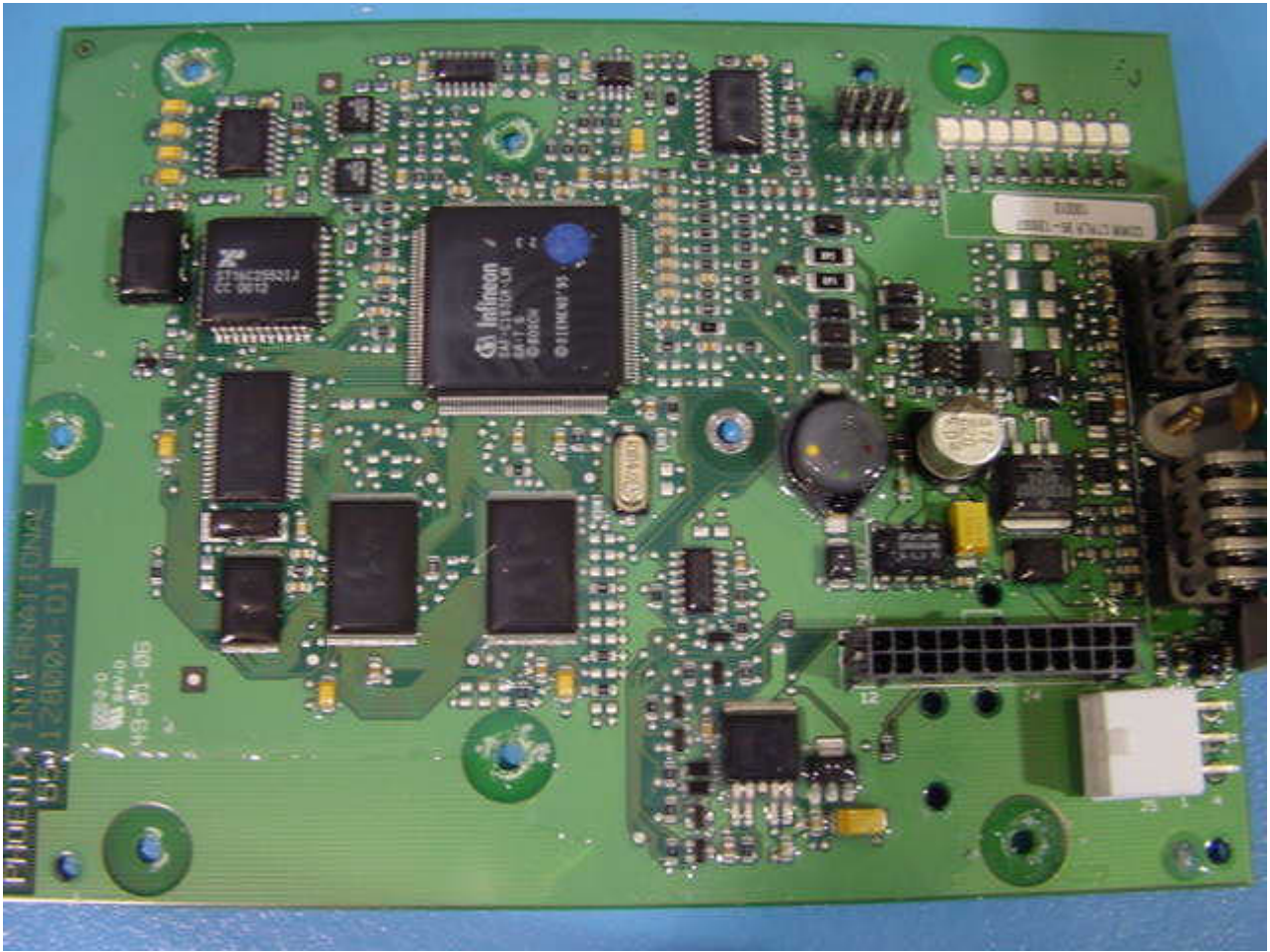
GPS module with RF shield removed (top)



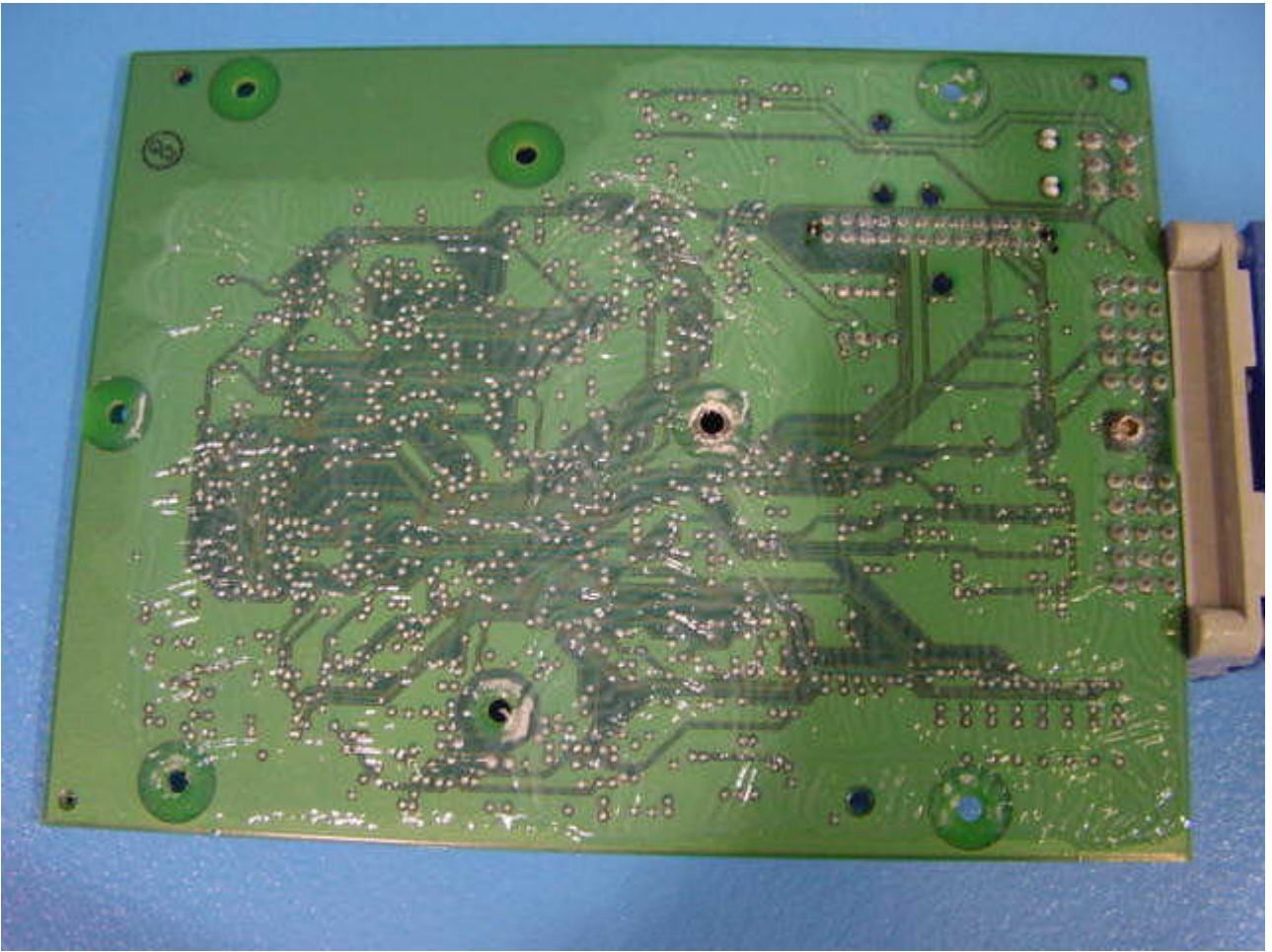
GPS module with RF shield removed (bottom)



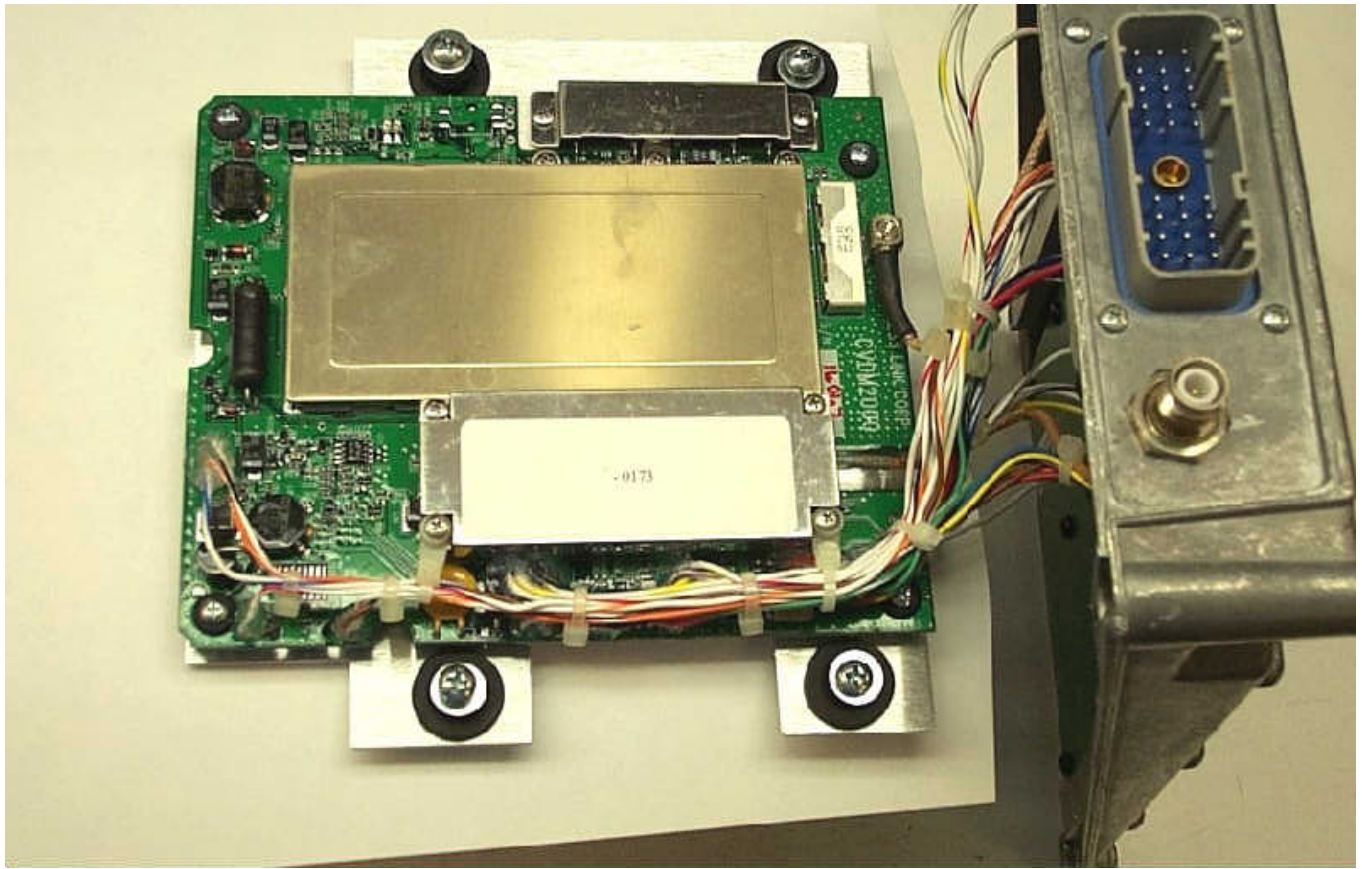
Machine Interface PCB in enclosure with Communications Interface PCB removed



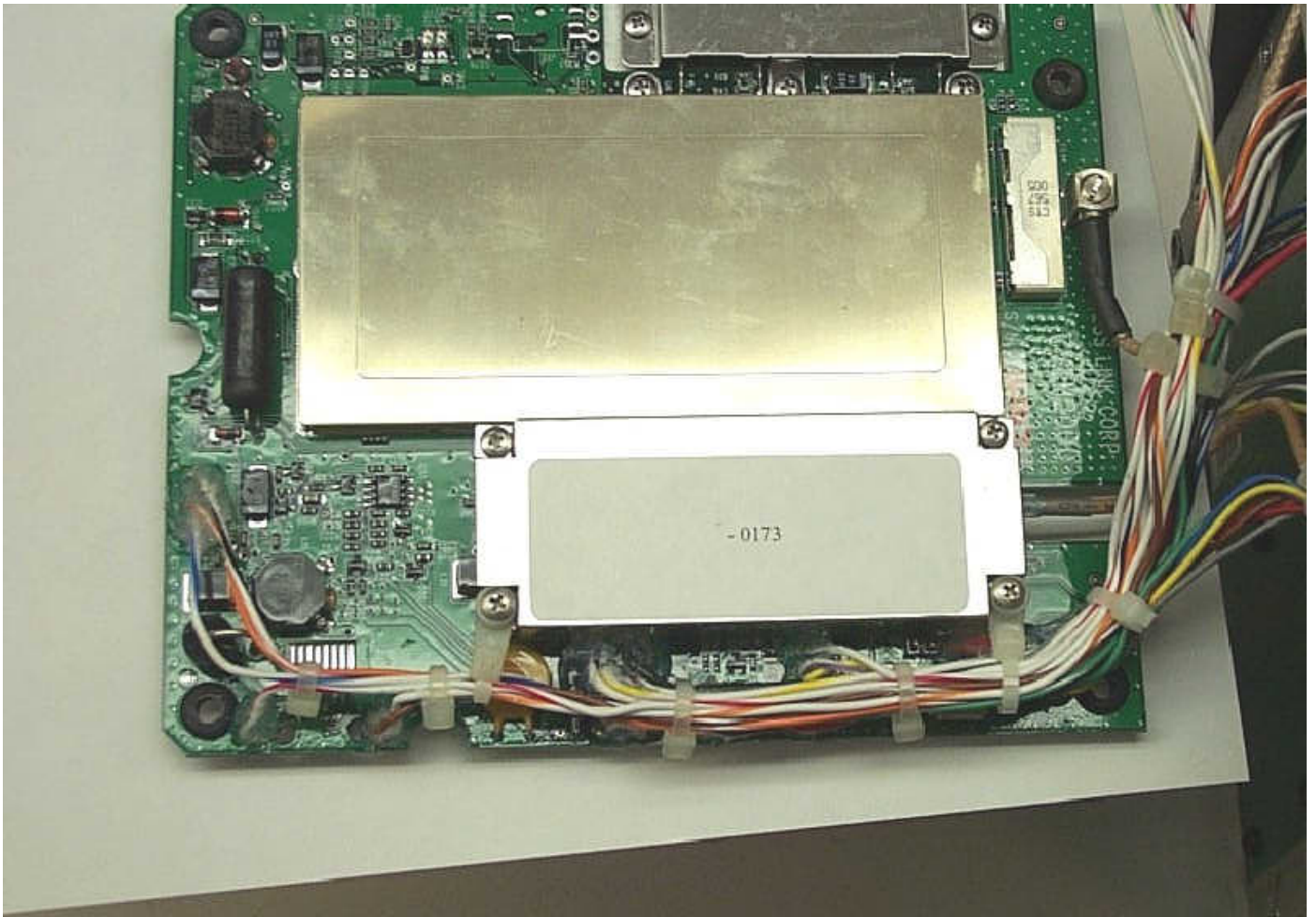
Machine Interface PCB (top)



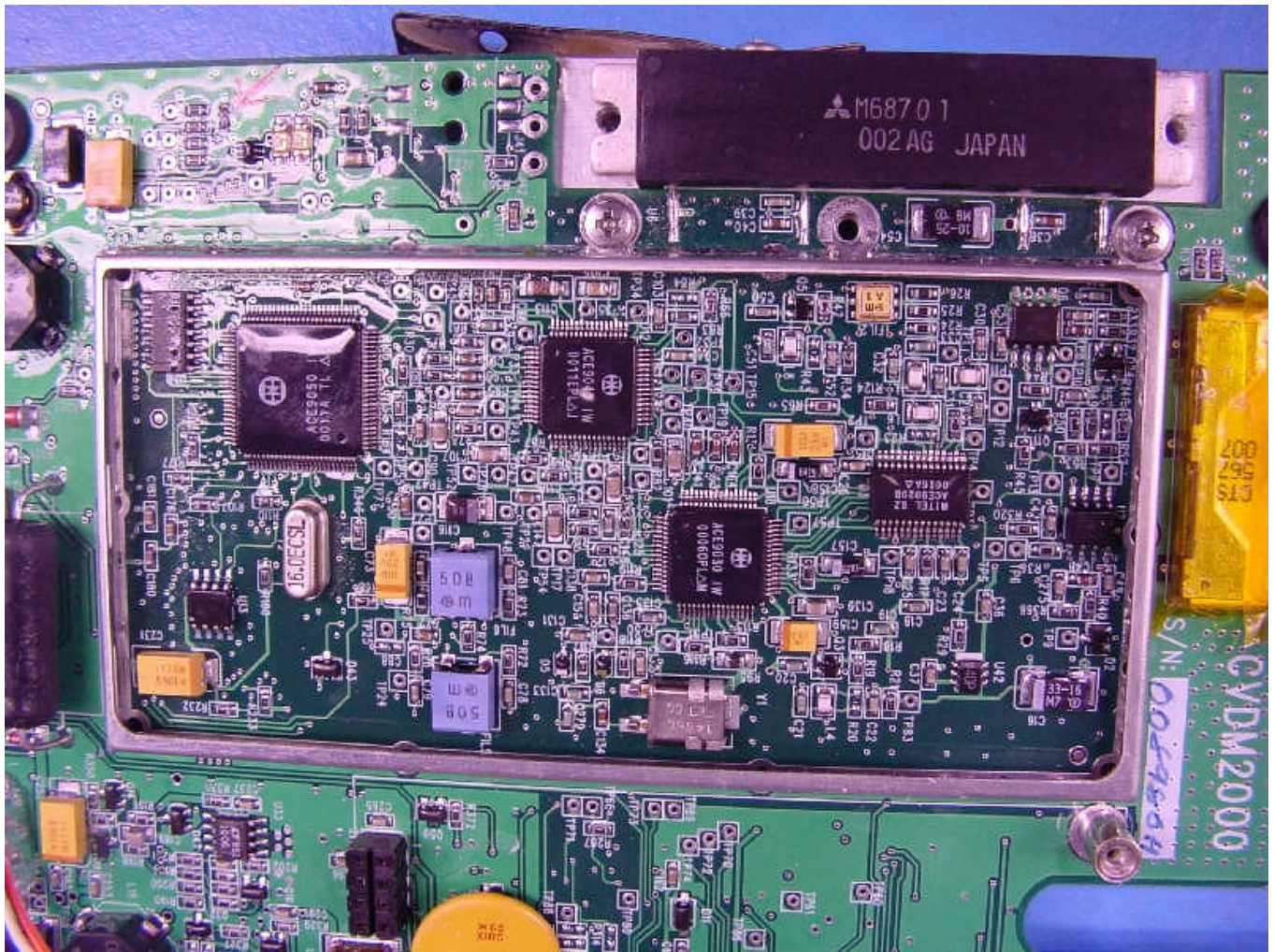
Machine Interface PCB (bottom)



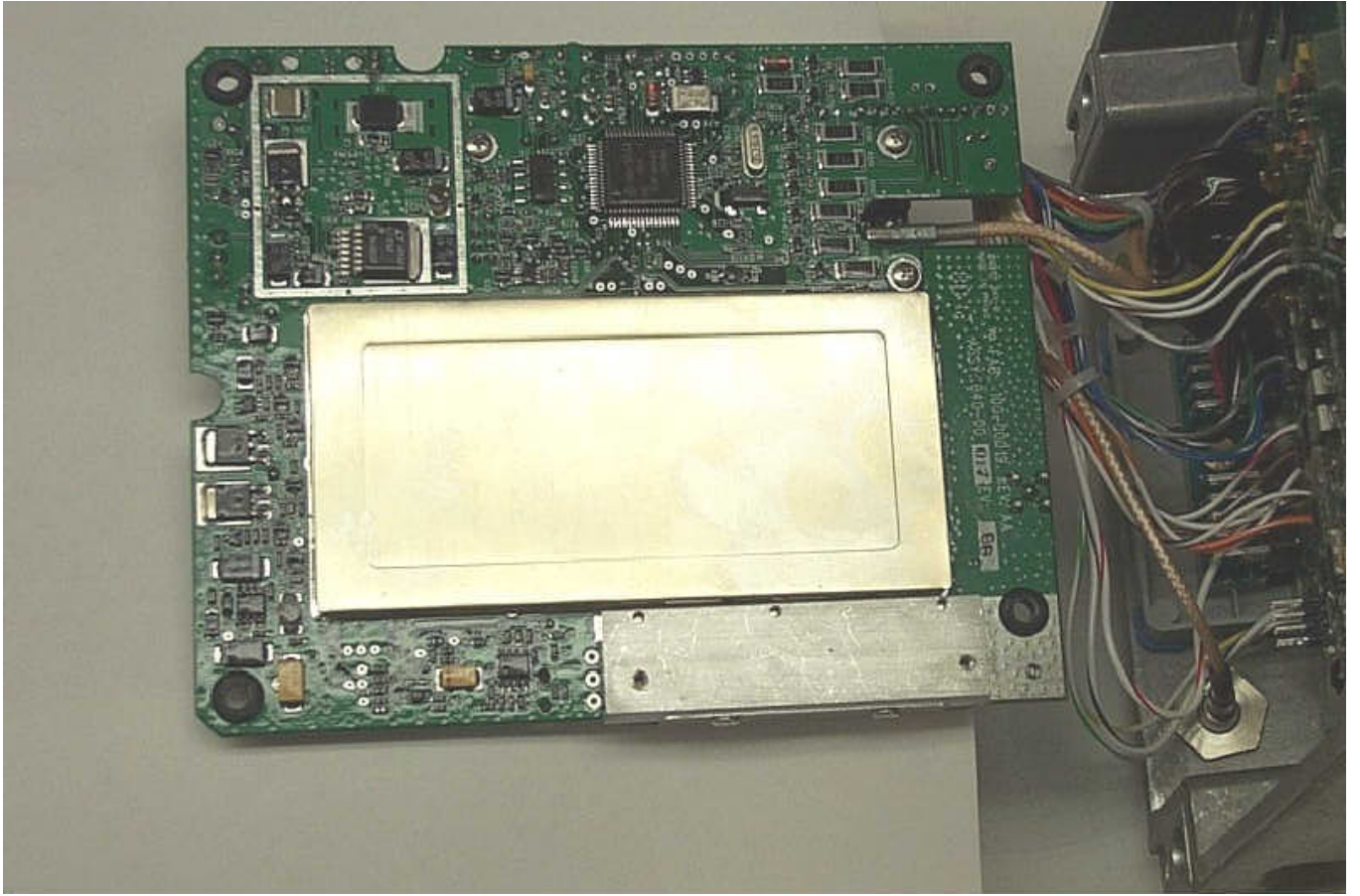
Communications Interface (Modem & GPS) PCB assembly with mounting plate



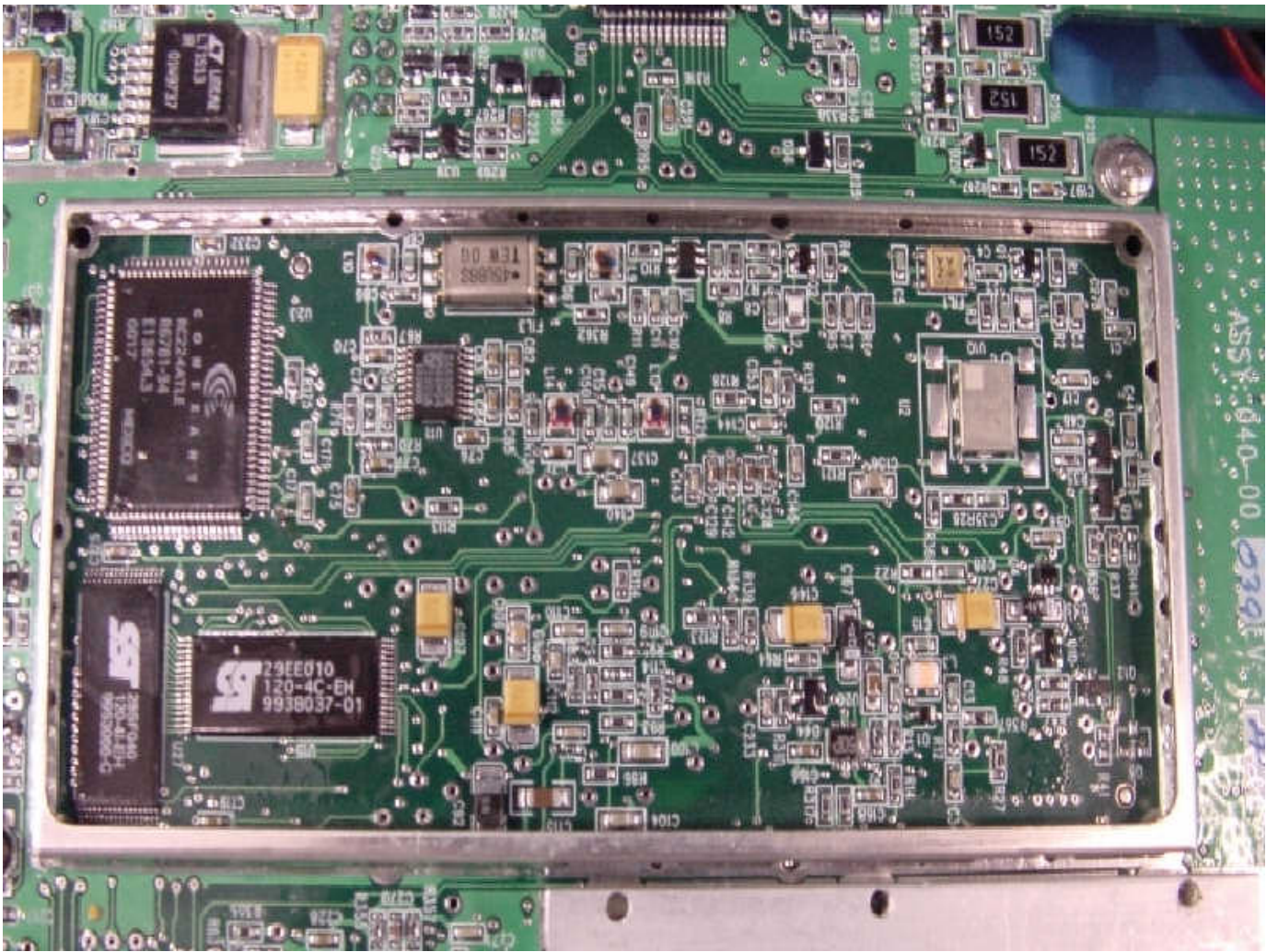
Communications Interface PCB assembly (top)



Communications Interface PCB with RF shields removed (top)



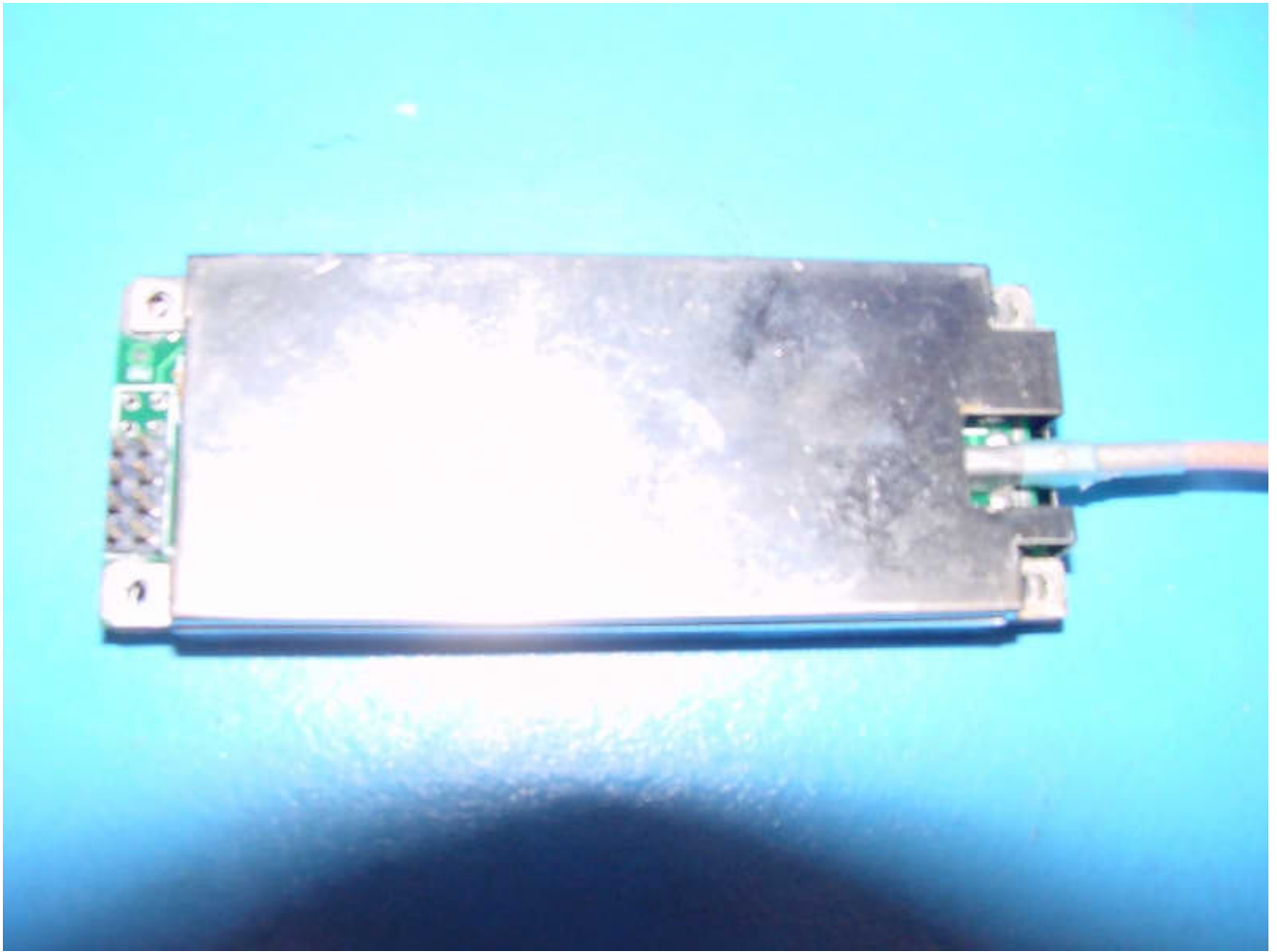
Communications Interface PCB assembly (bottom)



Communications Interface PCB with RF shield removed (bottom)



GPS module (top)



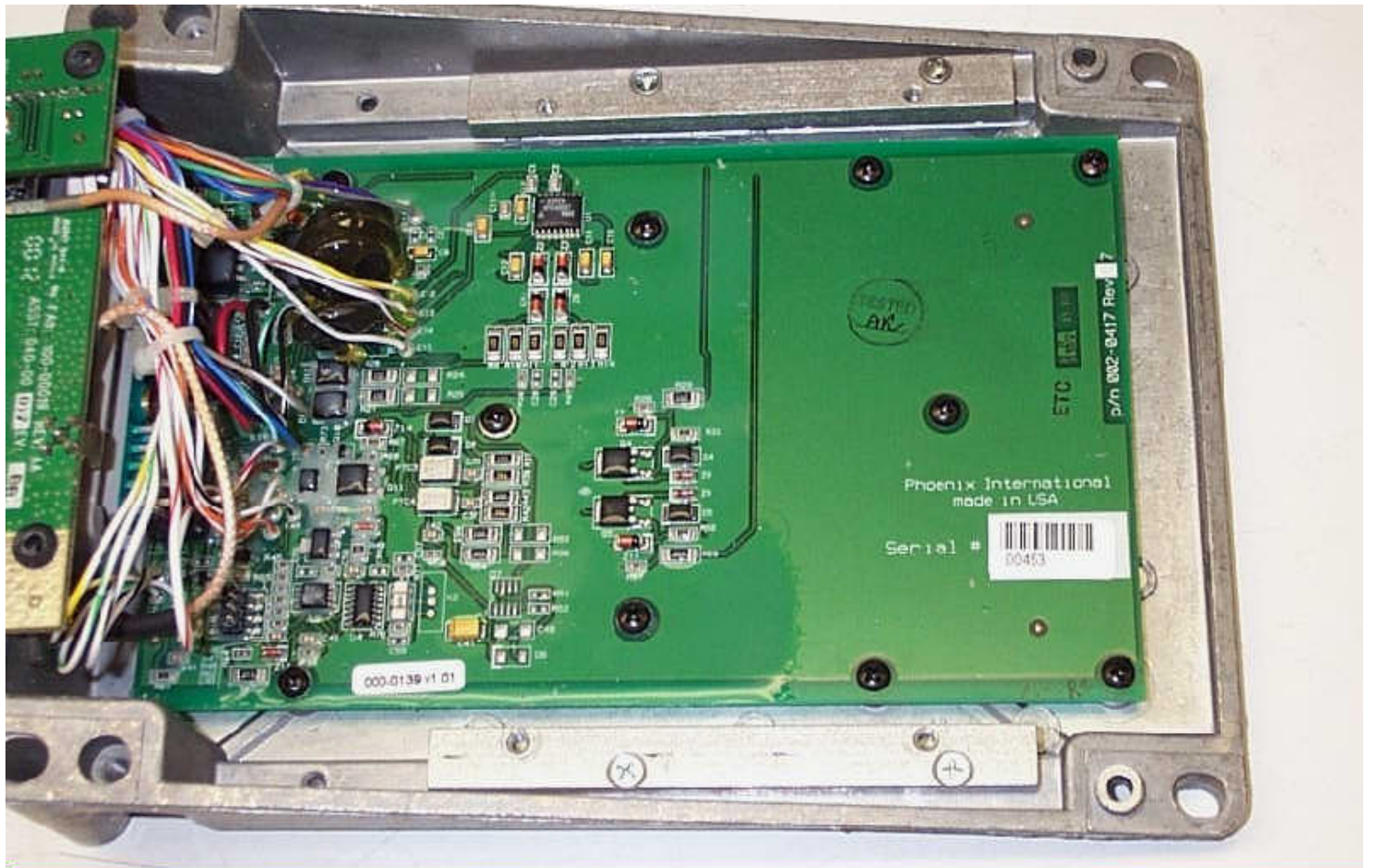
GPS module (bottom)



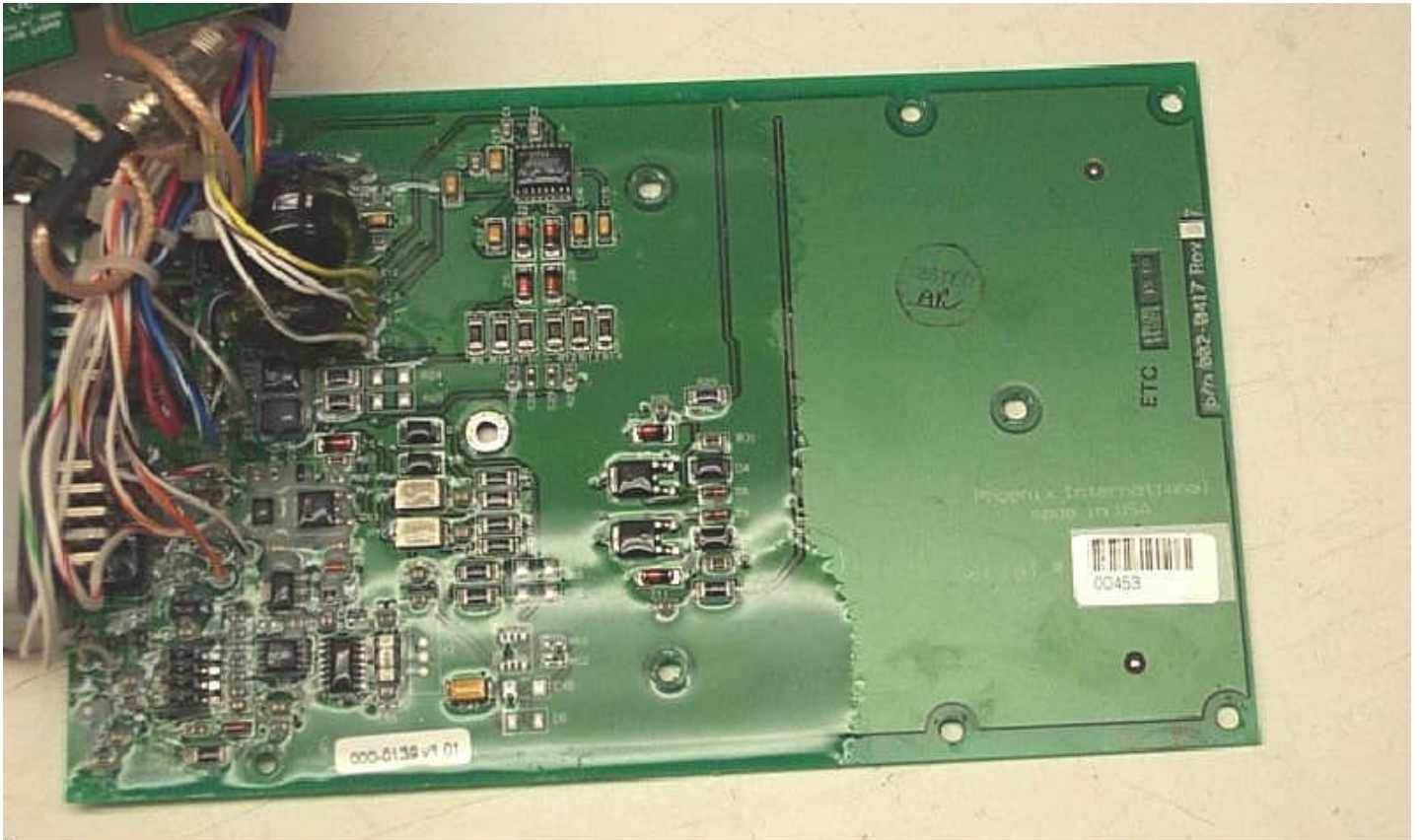
GPS module with RF shield removed (top)



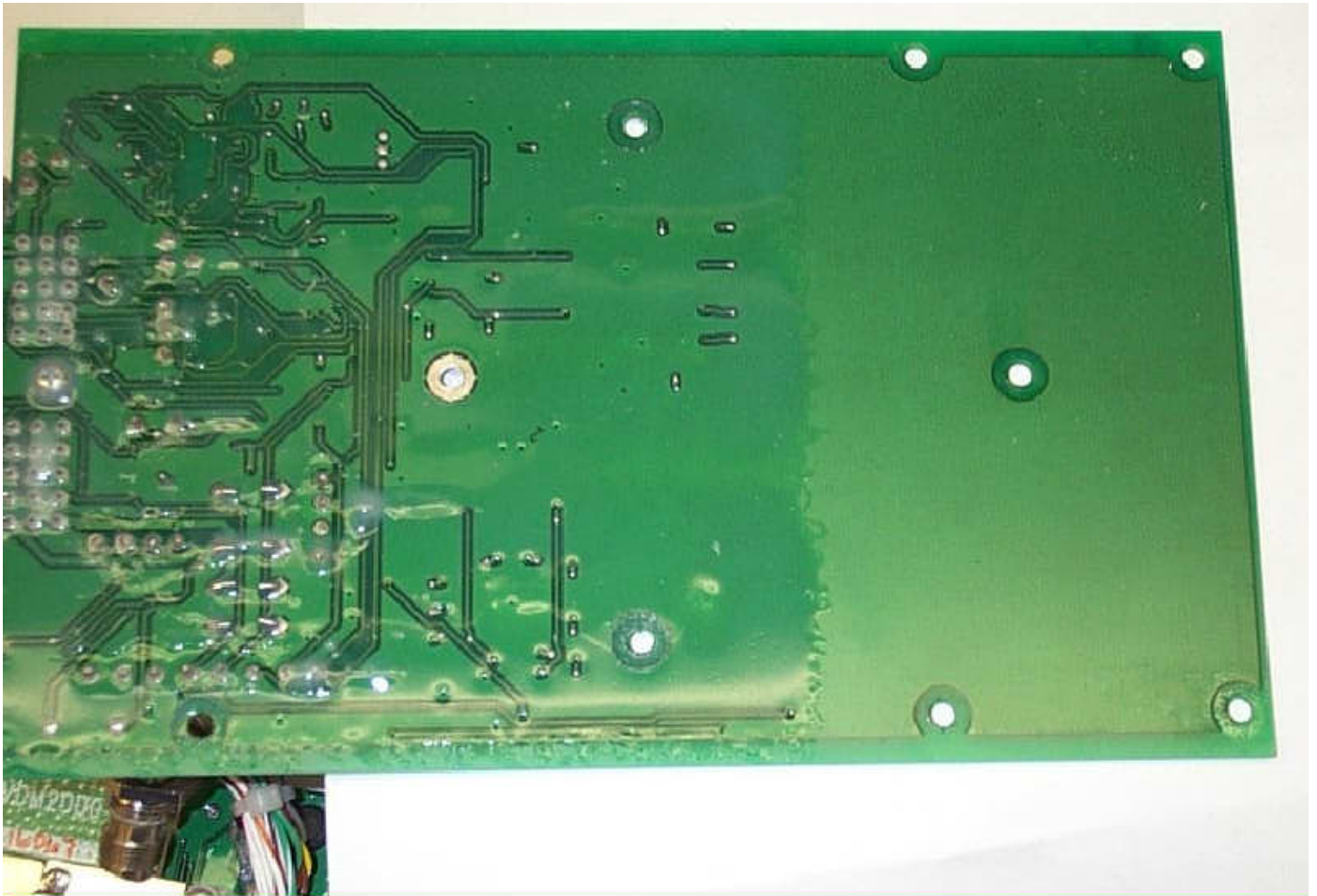
GPS module with RF shield removed (bottom)



Machine Interface PCB in enclosure with Communications Interface PCB removed



Machine Interface PCB (top)



Machine Interface PCB (bottom)