



Antenna

# 8 Antenna

The manufacturer of the antenna is Murata. The model number is LDA21K.

The antenna having 50 ohm impedance has been matched on the module to have good efficiency, and enabling the full power of the Bluetooth chip. The matching also assures that the best receiver sensitivity is achieved.

Even if the antenna is onboard of the module there are some considerations to make for the PCB layout, see chapter 7.

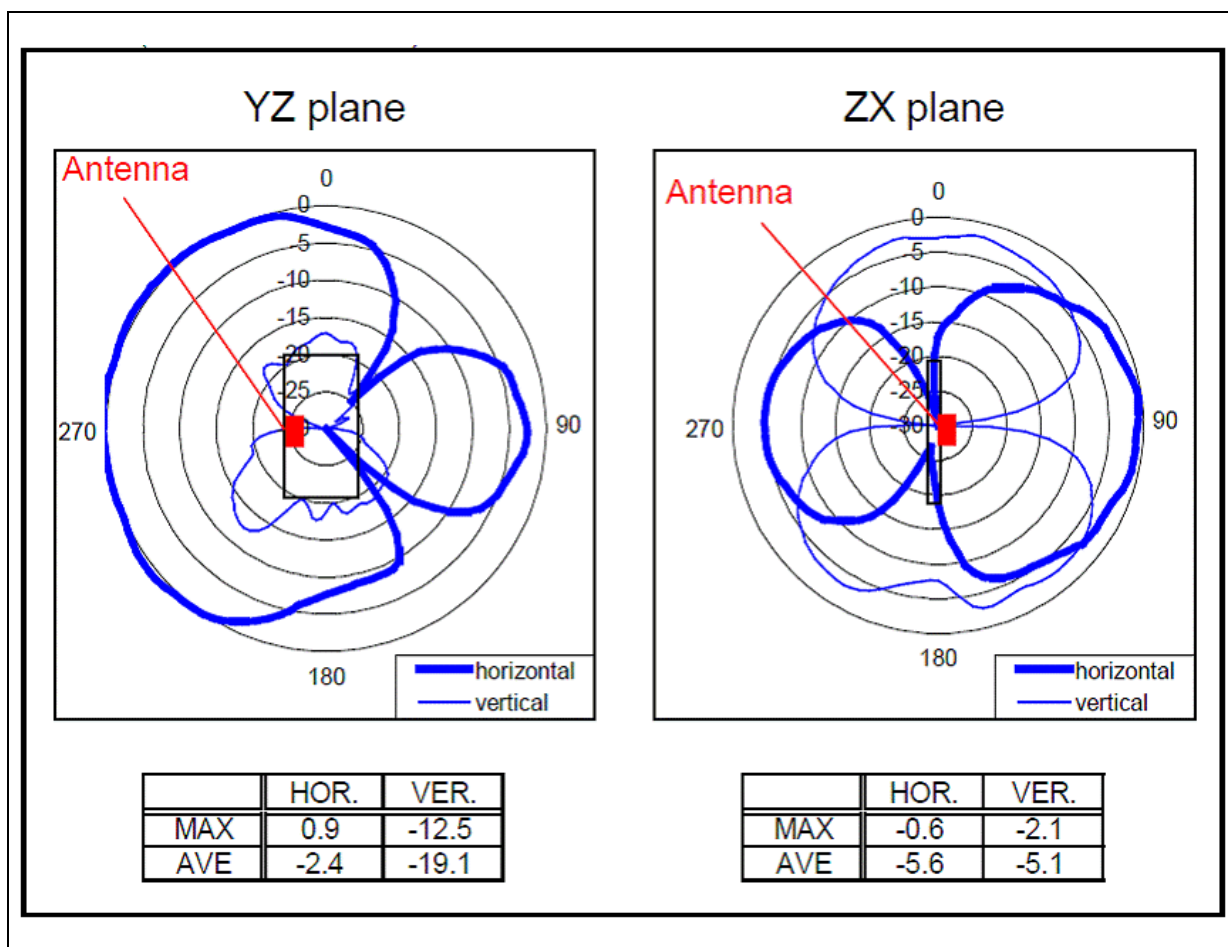


Figure 20. Radiation patterns of the built in antenna.