

Date: 23/02/2024

Regulatory Certification Body

DEKRA Testing and Certification, S.A.U.

Parque Tecnológico de Andalucía

C/ Severo Ochoa 2 & 6

29590 Campanillas

Málaga, Spain

Family declaration for FCC ID: OUY-2023NB82

To whom it may concern:

We,

Kamstrup A/S,

Industrivej 28, Skanderborg, DK-8660 Denmark

hereby declare,

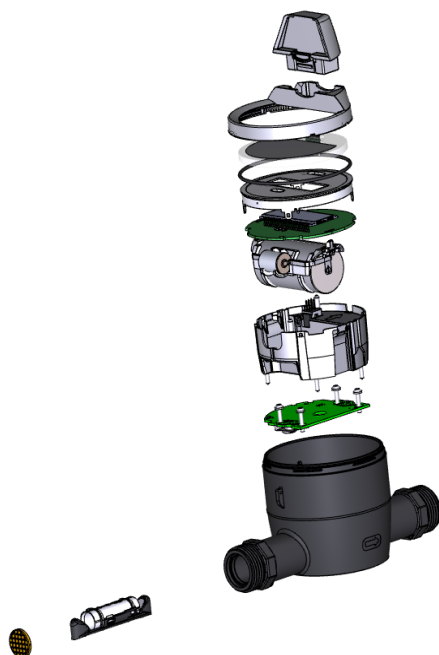
that the KWMx220 consists of two assemblies:

1. A top assembly that includes the RF communications PCB
2. A bottom assembly that contains the water flow PCB.

The KWM2220 and KWM3220 share the same top assembly. The bottom assembly for both series is electrically the same, but they are different mechanically in the housing. Both devices feature a piezo disc to measure the water flow in each pipe. The main discrepancy lies in the fact that, due to the proportions of each pipe, in the KWM3220 model, the piezo disc is mounted on the housing, whereas in the KWM2220 model, the piezo disc is mounted on the PCB.

The electric content of the two variants is therefore the same. The stack-up of the assemblies of the two main versions are shown below:

KWM2220



KWM3220



Sincerely,

By: Ole Skovgaard
Title: Head of Technical PM Communication
Company: Kamstrup A/S
Telephone: +4589931000
e-mail: osk@kamstrup.com